



POULTRY AND POULTRY MEAT STATISTICS

The latest National Statistics produced by Defra on the activity of UK hatcheries and poultry slaughterhouses and other related poultry statistics were released on 25 July 2013 according to the arrangements approved by the UK Statistics Authority.

This notice will be updated at 09:30 on 29 August 2013.

Contents:

- Section 1: UK Hatcheries Data – Chick Placings and Eggs Set
- Section 2: UK Poultry Slaughter, Average Weights and Poultry Meat Production
- Section 3: Methodology, notes and revisions policy

Key points

This release shows the latest monthly information on poultry outputs, including hatchery, slaughtering and production statistics. The key results for **June 2013** are given below:

- UK broiler chick placings were 2.3 per cent higher than June 2012 at 74 million birds and UK turkey placings were 13 per cent higher than June 2012 at 1.7 million birds.
- UK broiler slaughterings were 3.2 per cent higher than June 2012 at 70 million birds. UK turkey slaughterings were 11 per cent lower than June 2012 at 1.0 million birds.
- UK poultry meat production was 126 thousand tonnes, 5.0 per cent higher than in June 2012.

This notice and additional tables are available to download at:

<https://www.gov.uk/government/publications/poultry-and-poultry-meat-statistics>

Enquiries to: Sarah Thompson, Department for Environment, Food and Rural Affairs, Room 301, Foss House, Kings Pool, 1 - 2 Peasholme Green, York YO1 7PX. Tel: ++ 44 (0)1904 455097, email:sarah.thompson@defra.gsi.gov.uk

A National Statistics publication. National Statistics are produced to high professional standards. They undergo regular quality assurance reviews to ensure that they meet customer needs. They are produced free from any political interference. For general enquiries about National Statistics, contact the National Statistics Public Enquiry Service: tel. 0845 601 3034 email info@statistics.gov.uk. You can also find National Statistics on the internet at www.statistics.gov.uk.

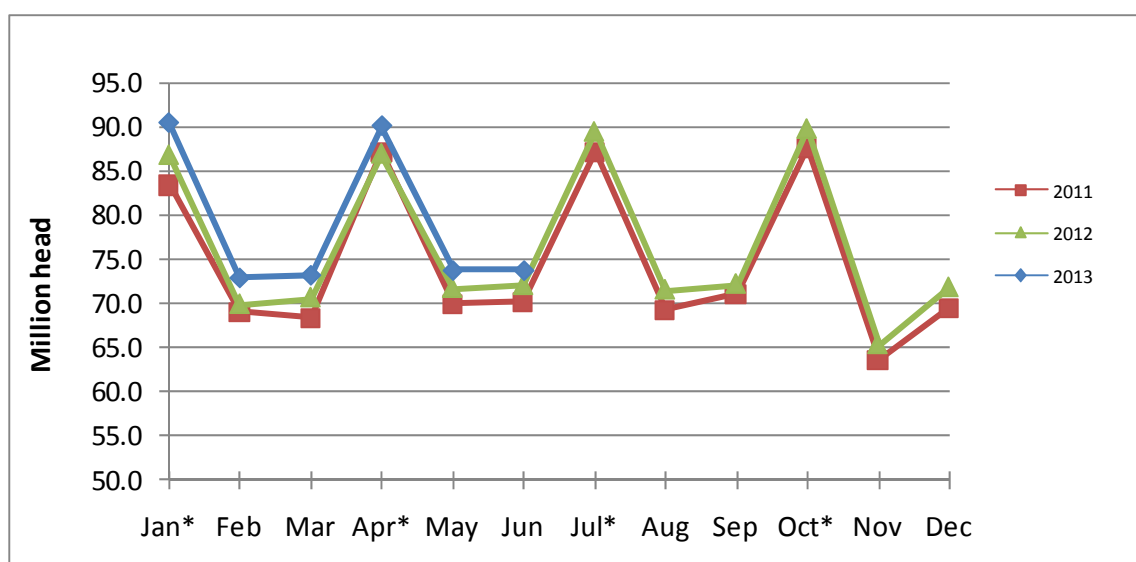
Section 1: United Kingdom Hatcheries Data – Placings And Eggs Set

The tables below show the number of chicks placed and eggs set by United Kingdom hatcheries. The number of birds placed each month shown below give an indication of future poultry meat and egg production. The number of eggs set each month indicates how many birds will be available for placing in future months. The surveys are run according to statistical, rather than calendar, months with January, April, July and October being five week periods and other months being four week periods. The effect of this is clearly seen in the charts. The twelve month moving totals can be used to get a clearer idea of trends.

Table 1.1: Commercial Broiler Chicks Placed in the UK from UK Hatcheries

Statistical Months	millions					
	% change			12 Month Moving Totals		
	2012	2013	12/13	2012	2013	12/13
January *	86.8	90.5	4%	899.7	921.8	2%
February	69.9	72.9	4%	900.6	924.8	3%
March	70.7	73.2	4%	902.8	927.4	3%
April *	86.9	90.1	4%	902.5	930.5	3%
May	71.7	73.7	3%	904.4	932.5	3%
June	72.1	73.7	2%	906.2	934.2	3%
July *	89.4			908.5		
August	71.5			910.8		
September	72.2			911.9		
October *	89.8			914.0		
November	65.4			915.8		
December	71.8			918.2		
Total	918.2	474.1				

Chart 1.1: Commercial Broiler Chicks Placed in the UK from UK Hatcheries



* 5 week months

Table 1.2: Female Broiler Parent Chicks Placed in the UK from UK Hatcheries (a,b,c)

millions

Statistical Months	% change			12 Month Moving Totals		
	2012	2013	12/13	2012	2013	12/13
January *	0.7	0.6	-15%	6.7	6.8	2%
February	0.6	0.6	4%	6.7	6.9	2%
March	0.4	0.6	28%	6.7	7.0	4%
April *	0.6	0.6	7%	6.7	7.0	4%
May	0.7	0.6	-16%	6.9	6.9	0%
June	0.6	0.6	-3%	7.0	6.9	-1%
July *	0.6			7.0		
August	0.6			7.1		
September	0.5			7.1		
October *	0.7			7.1		
November	0.5			7.0		
December	0.5			6.9		
Total	6.9	3.5				

(a) Excludes 'by-product' chicks which are included in Table 1.1

(b) Excludes grandparent chicks

(c) Includes imported female parent chicks

Table 1.3: Turkey Poults Placed in the UK from UK Hatcheries (a)

millions

Statistical Months	% change			12 Month Moving Totals		
	2012	2013	12/13	2012	2013	12/13
January *	1.3	1.4	6%	16.9	18.0	6%
February	1.2	1.0	-14%	17.1	17.8	4%
March	1.1	1.0	-8%	17.1	17.7	4%
April *	1.4	1.3	-13%	17.2	17.5	2%
May	1.3	1.1	-12%	17.2	17.4	1%
June	1.5	1.7	13%	17.3	17.6	2%
July *	2.5			17.5		
August	2.2			17.4		
September	2.3			17.8		
October *	1.3			17.8		
November	0.8			17.8		
December	1.0			17.9		
Total	17.9	7.5				

(a) Includes female breeder poults, but male breeder poults are excluded

* 5 week months

Chart 1.3: Turkey Poults Placed in the UK from UK Hatcheries

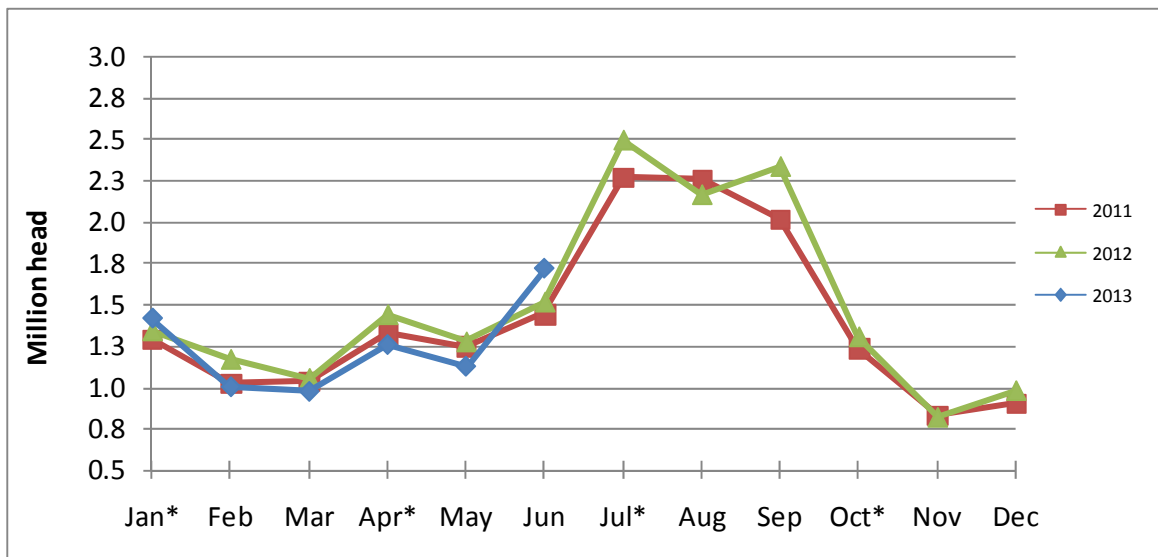
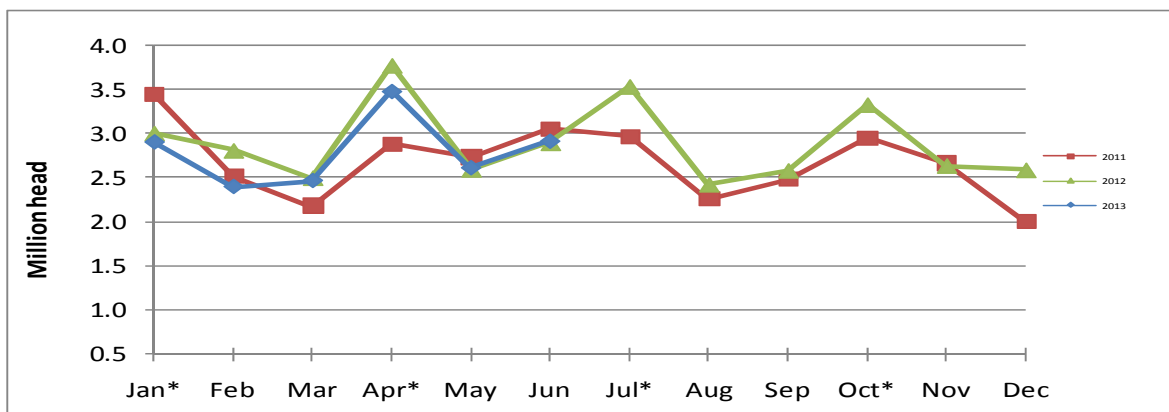


Table 1.4: Commercial Layer Chicks Placed in the UK from UK Hatcheries

Statistical Months	millions					
	2012			2013		
	2012	2013	% change 12/13	12 Month Moving Totals		% change 12/13
January *	3.0	2.9	-3%	31.7	34.6	9%
February	2.8	2.4	-15%	32.0	34.2	7%
March	2.5	2.5	-1%	32.4	34.2	6%
April *	3.8	3.5	-8%	33.3	33.9	2%
May	2.6	2.6	1%	33.1	33.9	2%
June	2.9	2.9	1%	33.0	33.9	3%
July *	3.5			33.5		
August	2.4			33.7		
September	2.6			33.8		
October *	3.3			34.2		
November	2.6			34.1		
December	2.6			34.7		
Total	34.7	16.8				

Chart 1.4: Layer Chicks Placed in the UK from UK Hatcheries



* 5 week months

Table 1.5: Broiler Eggs Set by UK Hatcheries (a)

millions

Statistical Months	Commercial Broiler Eggs Set			Broiler Breeder Eggs Set		Total Broiler Eggs Set		UK 12 Month Moving Totals	
	2012	2013	% change 12/13	2012	2013	2012	2013	2012	2013
January *	103.9	109.6	6%	6.0	5.6	109.8	115.2	1139.7	1168.3
February	83.5	87.4	5%	4.6	4.8	88.1	92.2	1139.2	1172.4
March	84.2	86.8	3%	4.6	4.5	88.8	91.3	1138.9	1174.8
April *	105.4	109.0	3%	6.0	5.4	111.4	114.4	1138.9	1177.8
May	86.7	88.3	2%	4.8	4.5	91.5	92.9	1140.6	1179.2
June	86.5	88.4	2%	4.9	4.9	91.4	93.3	1143.3	1181.1
July *	106.8			5.5		112.4		1146.8	
August	86.5			4.4		90.9		1149.5	
September	87.9			4.9		92.8		1153.3	
October *	99.8			5.7		105.5		1156.9	
November	85.6			4.5		90.1		1160.5	
December	86.1			4.1		90.1		1162.9	
Total	1,102.9	569.5		59.9	29.8	1162.9	599.3		

(a) Includes eggs set to produce chicks for placing outside the UK

Table 1.6: Turkey Eggs Set by UK Hatcheries (a)

millions

Statistical Months				12 Month Moving Totals		
	2012	2013	% change 12/13	2012	2013	% change 12/13
January *	1.8	1.9	6%	24.2	25.3	5%
February	1.4	1.4	0%	24.3	25.3	4%
March	1.6	1.4	-9%	24.5	25.2	3%
April *	2.2	1.9	-13%	24.6	24.9	1%
May	2.5	2.6	7%	24.7	25.1	2%
June	2.8	3.1	13%	24.7	25.4	3%
July *	3.5			24.7		
August	2.9			25.1		
September	1.6			25.1		
October *	1.8			25.1		
November	1.5			25.1		
December	1.6			25.2		
Total	25.2	12.5				

(a) Includes only eggs set for commercial stock including those for placing outside the UK

* 5 week months

Table 1.7: Layer Eggs Set by UK Hatcheries (a)

millions

Statistical Months	% change			12 Month Moving Totals		
	2012	2013	12/13	2012	2013	12/13
January *	9.4	9.2	-3%	91.5	98.9	8%
February	6.2	7.7	23%	92.2	100.3	9%
March	8.7	7.6	-12%	93.7	99.3	6%
April *	9.5	10.0	6%	94.6	99.8	6%
May	8.4	8.0	-5%	93.8	99.4	6%
June	8.2	7.6	-8%	94.5	98.7	5%
July *	9.2			96.0		
August	8.1			97.7		
September	8.3			98.3		
October *	9.0			97.8		
November	8.2			99.1		
December	5.9			99.1		
Total	99.1	50.1				

(a) Includes only eggs set for commercial stock including those for placing outside the UK

* 5 week months

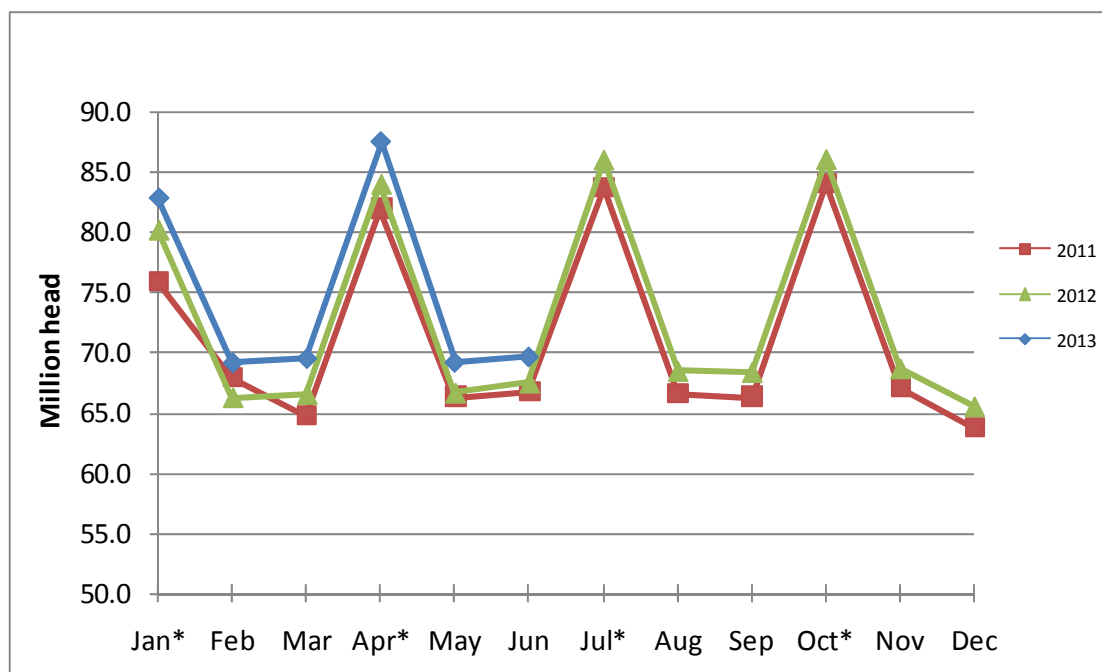
Section 2: UK Poultry Slaughterings - Numbers Slaughtered, Average Weights and Poultry Meat Production

The tables below show the estimated number of poultry slaughtered, average live weights of poultry and poultry meat production in the United Kingdom.

Table 2.1: UK Slaughter of Broiler Chickens

Statistical Months	Million head					
	% change			12 Month Moving Totals		
	2012	2013	12/13	2012	2013	12/13
January *	80.1	82.8	3%	859.1	876.5	2%
February	66.3	69.2	4%	857.5	879.4	3%
March	66.5	69.5	4%	859.3	882.4	3%
April *	83.9	87.5	4%	861.3	886.0	3%
May	66.7	69.2	4%	861.6	888.6	3%
June	67.5	69.7	3%	862.4	890.7	3%
July *	85.9			864.7		
August	68.4			866.5		
September	68.4			868.5		
October *	85.9			870.5		
November	68.7			872.1		
December	65.5			873.8		
Total	873.8	447.9				

Chart 2.1: UK Slaughter of Broiler Chickens



* 5 week months

Table 2.2: UK Slaughter of Boiling Fowl (a)

Statistical Months	Million head					
				12 Month Moving Totals		
	2012	2013	% change 12/13	2012	2013	% change 12/13
January *	4.2	3.4	-18%	44.6	44.8	0%
February	3.6	3.6	0%	44.6	44.8	1%
March	3.5	3.4	-4%	44.7	44.7	0%
April *	4.6	4.5	-2%	45.3	44.6	-2%
May	2.8	2.3	-17%	45.7	44.1	-3%
June	3.6	3.2	-13%	46.0	43.6	-5%
July *	4.2			45.8		
August	3.5			45.3		
September	3.7			45.0		
October *	4.5			45.1		
November	3.6			45.3		
December	3.8			45.5		
Total	45.5	20.4				

(a) Includes Spent commercial layer hens, spent layer breeders and spent broiler breeder hens

Table 2.3: UK Slaughter of Turkeys

Statistical Months	Million head					
				12 Month Moving Totals		
	2012	2013	% change 2012/2013	2012	2013	% change 12/13
January *	2.0	2.1	6%	17.3	18.6	7%
February	1.3	1.4	0%	17.4	18.6	7%
March	1.0	0.9	-2%	17.4	18.6	7%
April *	1.2	1.2	1%	17.4	18.6	7%
May	1.1	1.0	-6%	17.5	18.5	6%
June	1.1	1.0	-11%	17.6	18.4	5%
July *	1.4			17.7		
August	1.3			18.0		
September	1.5			18.2		
October *	2.3			18.4		
November	2.0			18.5		
December	2.0			18.4		
Total	18.4	7.8				

* 5 week months

Table 2.4: Average Liveweights per Bird at Point of Slaughter in England & Wales

Statistical Months	kilograms					
	Broilers		Boiling Fowls		Turkeys	
	2012	2013	2012	2013	2012	2013
January *	2.20	2.22	2.01	2.21	15.58	15.09
February	2.18	2.21	2.10	2.07	14.32	14.17
March	2.22	2.21	2.21	2.12	12.59	13.12
April *	2.21	2.24	2.21	2.21	12.41	12.91
May	2.20	2.25	2.13	2.16	12.45	13.23
June	2.15	2.27	2.05	2.17	12.97	13.42
July *	2.18		2.04		12.64	
August	2.17		2.20		13.08	
September	2.20		2.15		13.08	
October *	2.19		2.10		14.55	
November	2.18		2.06		10.55	
December	2.19		2.09		9.19	

Table 2.5: UK Poultrymeat Production (a,b)

Period		thousand tonnes carcase weight						
		Broilers	Boiling Fowl	Turkeys	Ducks	Total	% change since last year	UK 12 Month Moving Totals
2012	July *	129.4	5.3	15.1	2.9	152.7	4%	1,591.8
	August	102.0	4.7	14.1	2.4	123.2	4%	1,596.5
	September	103.4	4.9	16.1	2.3	126.7	3%	1,599.9
	October *	129.2	5.4	29.4	3.0	167.1	2%	1,603.6
	November	103.7	4.2	15.6	2.6	126.1	4%	1,608.1
	December	100.5	4.6	16.3	2.8	124.2	1%	1,609.0
	Total	1,321.9	59.3	195.9	32.1	1,609.0	3%	
2013	January *	127.0	4.9	27.1	3.1	162.0	4%	1,614.9
	February	105.2	4.8	16.0	2.2	128.3	4%	1,619.8
	March	105.2	4.6	10.2	2.2	122.1	3%	1,623.0
	April *	133.2	6.1	13.4	3.0	155.7	3%	1,627.3
	May	106.4	3.1	11.3	2.3	123.1	4%	1,631.6
	June	108.5	4.3	11.2	2.3	126.3	5%	1,637.6
	Total	685.6	27.7	89.2	15.0	817.5		

(a) Converted to whole bird equivalent carcase weight net of offal

(b) Excludes other poultry types, e.g. geese

* 5 week months

Methodology Notes and Revisions policy:

1. The information in this notice is used by the UK government and the EU as evidence for assessing market conditions and evaluating agricultural policy. The hatchery statistics are also required by the EU under Regulation (EC) No 617/2008 and 1234/2007. The poultry slaughterings and weight statistics are also required monthly under EU Regulation 1165/2008. Other users include the food and farming industry, academia and the general public. Contact details are available on the front page of this notice, for you to send feedback or ask questions about the information provided.
2. Defra runs a monthly survey of registered England and Wales hatcheries. It is a statutory survey of 42 respondents that collects information on the number of eggs set and the chicks placed by hatcheries. The response rate is typically 100%. Similar surveys are run by the Rural & Environment Research and Analysis Directorate (RERAD) for Scotland and the Department of Agriculture and Rural Development (DARD) for Northern Ireland.
3. Poultry slaughterings and poultry meat production statistics are estimated from the number of chicks placed by hatcheries and day old chick imports using industry advice on life-spans and mortality. Average liveweights for each type of poultry are obtained from Defra's monthly survey of England and Wales poultry slaughterhouses. This is a sample survey of large poultry slaughterhouses, around 26 respondents. Similar surveys are run in Scotland and Northern Ireland. Meat production is calculated from the estimated number of birds slaughtered and the average liveweights. The liveweight is converted to carcase weight using industry advice on conversion factors.
4. Survey data are subject to a variety of validation checks which identify inconsistencies in the data. All data are cleaned prior to publication in discussion with the survey respondents.
5. The percentage changes shown are calculated using unrounded figures. Any percentage changes calculated using the published (rounded) figures may differ slightly from the changes shown. The UK 12 month moving totals represent the sum of the 12 months up to and including the date indicated and can be seen as a trend measure that is not affected by seasonality.

Revisions

6. Figures in this notice are provisional and subject to revision. We will provide information about any revisions we make to previously published information in this statistics notice and the associated datasets. Revisions could occur for various reasons, including:
 - a. if we have not received survey data from respondents we make an estimate based on their previous returns. These estimates are replaced with actual survey data when it is received.
 - b. survey respondents occasionally supply amended figures for previous periods.
 - c. we may also revise the methodology used to raise the survey data to give UK totals.

This month minor revisions have been made to the hatcheries data from January 2013 and the slaughter and production data from February 2013 for the reasons given above.