



6 February 2014

United Kingdom Egg Statistics – Quarter 4, 2013

These National Statistics on UK egg packing, processing and trade were released on 6 February 2014 according to the arrangements approved by the UK Statistics Authority.

This quarterly notice will be next updated at 09:30 on 8 May 2014.

Contents

| | | |
|-----------|------------------------------------------|-----------|
| Section 1 | Commentary | page 2 |
| Section 2 | UK Egg Packing and Processing Statistics | pages 3-5 |
| Section 3 | UK Egg Trade | page 6 |
| Section 4 | Methodology, notes and revisions policy | page 7 |

Key results

This release shows quarterly information on egg packing, usage and prices. It also includes monthly information on the trade in eggs and egg products. The key results are given below:

- 6,646 thousand cases of eggs were packed during the fourth quarter of 2013.
Free range accounted for 42 per cent of all eggs packed, the lowest level of the last three years. Enriched cage accounted for 52 per cent, the highest level of the last three years.
- The volume of eggs processed during the fourth quarter of 2013 totalled 25 thousand tonnes. The production of liquid egg and egg products increased by 4.2 per cent compared to the previous quarter, and increased by 17.4 per cent compared to the same period of 2012.
- The average price paid by packers to producers for all eggs packed during quarter four 2013 was 88.2 pence per dozen, compared with 89.7 pence per dozen during quarter four 2012.

This release and associated timeseries are available online:

<https://www.gov.uk/government/publications/egg-statistics>

Enquiries to: Leigh Riley, Department for Environment, Food and Rural Affairs, Room 301, Foss House, King Pool, 1 - 2 Peasholme Green, York YO1 7PX. Tel:++ 44 (0)1904 455095 email:leigh.riley@defra.gsi.gov.uk

A National Statistics publication. National Statistics are produced to high professional standards. They undergo regular quality assurance reviews to ensure that they meet customer needs. They are produced free from any political interference. For general enquiries about National Statistics, contact the National Statistics Public Enquiry Service: tel. 0845 601 3034 email info@statistics.gov.uk. You can also find National Statistics on the internet at www.statistics.gov.uk.

Section 1: Commentary

UK egg packing, price and processing statistics

- Of the total 6.6 million cases of eggs packed by packing stations in the UK, 5 million (74 per cent) were packed in England and Wales. Throughput has been steadily increasing recently to a peak of 6.8 million cases in Q2 2013. The latest data shows a slight fall in throughput as a result of a smaller laying flock.
- Broken down by type, eggs from enriched cages accounted for 52 per cent of the total throughput whilst free range eggs accounted for 42 per cent. Barn and organic eggs together accounted for 6 per cent.
- The weighted average 'packer to producer' price of all eggs, as shown in Table 2.3, was 88.2p per dozen. This was a decrease of 1.7 per cent compared to the same period in 2012.
- The number of eggs bought by UK egg processors totalled 1.19 million cases (equating to 26 thousand tonnes), an increase of 4 per cent on the same period in 2012, as shown in Table 2.4.
- Table 2.5 shows that UK egg processors produced 25 thousand tonnes of egg products, a rise of 17 per cent on the same period in 2012.
- Liquid egg accounted for 65 per cent of the total production and shows a slight increase on the previous quarter. Production of other egg products decreased slightly on the previous quarter, as shown in Table 2.5.

Egg trade data (sourced from HM Revenue and Customs)

- The latest trade data from HMRC shows that during the period Jan-Nov 2013, the UK imported 1,571 thousand cases and exported 265 thousand cases of shell eggs (Table 3.1). The November figures show a 5 per cent decrease in imports on the same period last year to 184 thousand cases and the export figures for November also show a decrease of 56 per cent to 13 thousand cases on the same period last year.
- UK imports of egg products for the period Jan-Nov 2013 stood at 3 million cases (Table 3.2), a rise of 6.4 per cent on the same period last year. Exports of egg products for the same period totalled 500 thousand cases pending further investigation by HMRC.

Section 2 (a): UK egg packing and price statistics

The tables in this section show quarterly information on UK egg packing and processing. Q1 refers to the period January to March, Q2 refers to the period April to June etc.

The packing station figures include throughput of both graded and ungraded eggs. The weighted average packer to producer prices, as shown in table 2.3, are weighted according to the volume of throughput of each egg type by each packing station. From 1st January 2012, egg producers were legally required to house laying hens in enriched colony systems only.

Table 2.1: UK Packing Station Egg Throughput by Country

| Period | | E&W | Scot | NI | UK | thousand cases % change on previous year |
|--------|--------------|---------------|--------------|--------------|---------------|---------------------------------------------|
| 2011 | Q1 | 5,102 | 1,062 | 690 | 6,854 | 5.5% |
| | Q2 | 5,249 | 958 | 673 | 6,880 | 2.9% |
| | Q3 | 5,040 | 898 | 693 | 6,632 | -4.2% |
| | Q4 | 4,974 | 926 | 655 | 6,555 | -5.9% |
| | Total | 20,365 | 3,845 | 2,711 | 26,921 | -0.5% |
| 2012 | Q1 | 4,875 | 1,003 | 628 | 6,506 | -5.1% |
| | Q2 | 4,751 | 908 | 660 | 6,319 | -8.2% |
| | Q3 | 4,836 | 955 | 709 | 6,501 | -2.0% |
| | Q4 | 4,966 | 967 | 663 | 6,596 | 0.6% |
| | Total | 19,428 | 3,834 | 2,660 | 25,922 | -3.7% |
| 2013 | Q1 | 5,088 | 942 | 693 | 6,723 | 3.3% |
| | Q2 | 5,119 | 975 | 725 | 6,819 | 7.9% |
| | Q3 | 4,999 | 936 | 778 | 6,713 | 3.3% |
| | Q4 | 4,913 | 937 | 796 | 6,646 | 0.8% |
| | Total | 20,118 | 3,791 | 2,991 | 26,901 | 3.8% |

Table 2.2: UK Packing Station Egg Throughput by Egg Production Type

| Period | | Enriched cage | Barn | Free Range | Organic | Total | thousand cases |
|--------|--------------|---------------|--------------|---------------|------------|---------------|----------------|
| 2011 | Q1 | 3,343 | 291 | 3,007 | 212 | 6,854 | |
| | Q2 | 3,305 | 277 | 3,055 | 243 | 6,880 | |
| | Q3 | 3,300 | 248 | 2,875 | 209 | 6,632 | |
| | Q4 | 3,180 | 259 | 2,943 | 174 | 6,555 | |
| | Total | 13,128 | 1,075 | 11,879 | 838 | 26,921 | |
| 2012 | Q1 | 3,106 | 229 | 3,004 | 167 | 6,506 | |
| | Q2 | 3,046 | 222 | 2,885 | 167 | 6,319 | |
| | Q3 | 3,206 | 238 | 2,888 | 169 | 6,501 | |
| | Q4 | 3,238 | 259 | 2,939 | 159 | 6,596 | |
| | Total | 12,596 | 948 | 11,716 | 662 | 25,922 | |
| 2013 | Q1 | 3,339 | 250 | 2,986 | 148 | 6,723 | |
| | Q2 | 3,426 | 222 | 3,017 | 155 | 6,819 | |
| | Q3 | 3,381 | 199 | 2,973 | 159 | 6,713 | |
| | Q4 | 3,460 | 219 | 2,822 | 146 | 6,646 | |
| | Total | 13,606 | 890 | 11,797 | 607 | 26,901 | |

Table 2.3: Average Prices Paid by UK Packers to Producers (a)

pence per dozen

| Period | | Enriched cage | Barn | Free Range | Organic | All Eggs | % change on previous year |
|--------|--------------|---------------|-------------|--------------|--------------|-------------|---------------------------|
| 2011 | Q1 | 53.5 | 73.4 | 83.0 | 130.4 | 69.7 | -6.9% |
| | Q2 | 52.2 | 72.4 | 82.2 | 129.4 | 69.1 | -0.8% |
| | Q3 | 54.0 | 72.8 | 83.2 | 128.4 | 69.7 | 4.9% |
| | Q4 | 56.1 | 72.0 | 84.0 | 138.3 | 71.4 | 2.6% |
| | Total | 53.9 | 72.6 | 83.1 | 131.6 | 70.0 | -0.2% |
| 2012 | Q1 | 65.3 | c | 89.8 | c | 79.1 | 13.5% |
| | Q2 | 74.4 | c | 99.7 | c | 88.4 | 28.0% |
| | Q3 | 73.4 | c | 99.4 | c | 87.4 | 25.4% |
| | Q4 | 75.8 | c | 101.7 | c | 89.7 | 25.7% |
| | Total | 72.2 | c | 97.7 | c | 86.2 | 23.2% |
| 2013 | Q1 | 77.5 | c | 105.6 | c | 92.2 | 16.6% |
| | Q2 | 75.4 | c | 105.5 | c | 91.0 | 2.9% |
| | Q3 | 72.9 | c | 104.3 | c | 89.2 | 2.1% |
| | Q4 | 71.3 | c | 105.5 | c | 88.2 | -1.7% |
| | Total | 74.3 | c | 105.2 | c | 90.2 | 4.6% |

'c' confidential

(a) From 2012 the price is an average across the survey period rather than an end of period weekly spot price and weighted according to the volumes packed by each packing station. Bonus payments paid are included.

Section 2 (b): UK egg processing statistics

Table 2.4: Number of Eggs Bought by UK Egg Processors

| Period | | Thousand cases | Tonnes | % change year on year |
|--------|--------------|----------------|----------------|-----------------------|
| 2011 | Q1 | 1,276 | 28,076 | 7.7% |
| | Q2 | 1,341 | 29,497 | 0.2% |
| | Q3 | 1,354 | 29,797 | 10.0% |
| | Q4 | 1,280 | 28,170 | -3.3% |
| | Total | 5,252 | 115,540 | 3.4% |
| 2012 | Q1 | 1,178 | 25,926 | -7.7% |
| | Q2 | 1,223 | 26,900 | -8.8% |
| | Q3 | 1,228 | 27,017 | -9.3% |
| | Q4 | 1,141 | 25,095 | -10.9% |
| | Total | 4,770 | 104,938 | -9.2% |
| 2013 | Q1 | 1,125 | 24,742 | -4.6% |
| | Q2 | 1,080 | 23,769 | -11.6% |
| | Q3 | 1,090 | 23,979 | -11.2% |
| | Q4 | 1,185 | 26,078 | 3.9% |
| | Total | 4,480 | 98,567 | -6.1% |

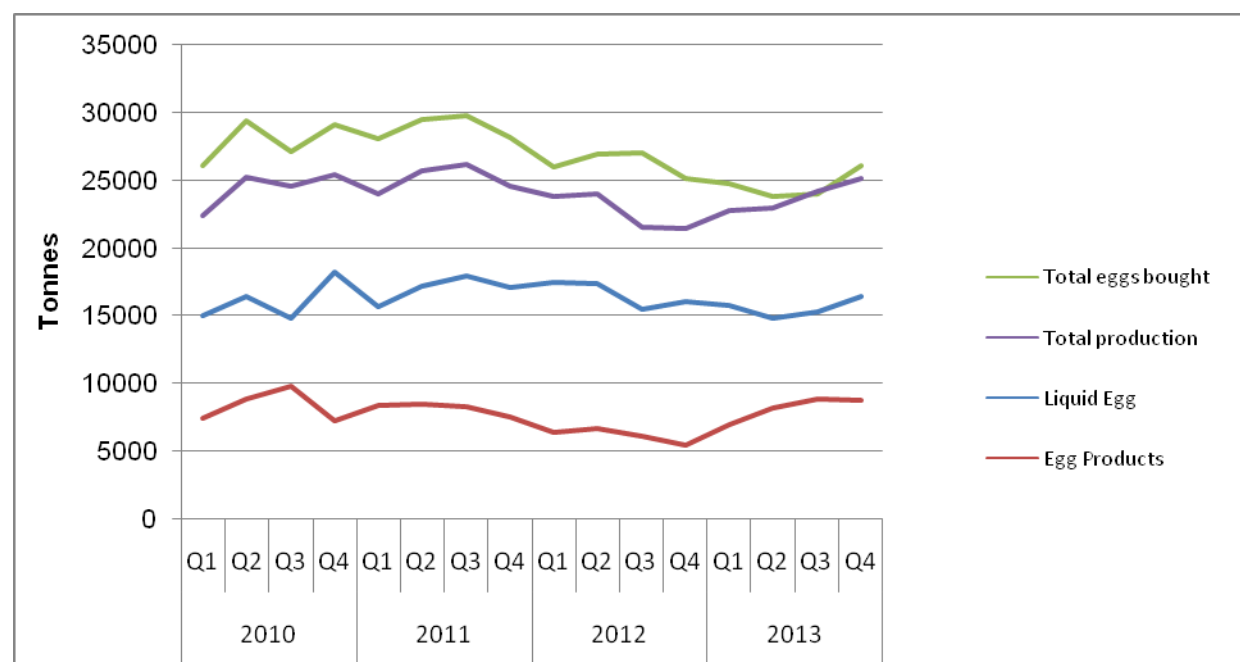
Table 2.5: Production of Egg Products by UK Egg Processors

tonnes

| Period | | Liquid Egg | Egg Products | | Total | % change year on year |
|--------|--------------|---------------|-----------------|--------------------|----------------|-----------------------|
| | | | Hard Boiled (a) | Other Products (a) | | |
| 2011 | Q1 | 15,690 | 8,300 | | 23,990 | 7.1% |
| | Q2 | 17,190 | 8,471 | | 25,661 | 1.6% |
| | Q3 | 17,943 | 8,231 | | 26,174 | 6.4% |
| | Q4 | 17,085 | 7,516 | | 24,601 | -3.2% |
| | Total | 67,908 | 32,518 | | 100,426 | 2.8% |
| 2012 | Q1 | 17,447 | 6,393 | | 23,840 | -0.6% |
| | Q2 | 17,361 | 6,641 | | 24,001 | -6.5% |
| | Q3 | 15,485 | 6,060 | | 21,545 | -17.7% |
| | Q4 | 16,045 | 5,409 | | 21,454 | -12.8% |
| | Total | 66,338 | 24,503 | | 90,841 | -9.5% |
| 2013 | Q1 | 15,785 | 6,964 | | 22,749 | -4.6% |
| | Q2 | 14,797 | 8,126 | | 22,923 | -4.5% |
| | Q3 | 15,303 | 8,852 | | 24,155 | 12.1% |
| | Q4 | 16,453 | 8,726 | | 25,179 | 17.4% |
| | Total | 62,338 | 32,667 | | 95,005 | 4.6% |

(a) Separate data for Hard Boiled Eggs and Other Products currently unavailable.

Figure 2.1: Intake and Production of Egg Products by UK Egg Processors (a)



(a) The volume of eggs processed also includes any processing carried out for external customers who supply their own eggs. This can cause the overall volume of eggs processed to be higher than the volume of eggs purchased, as in the statistics for Q3 2013.

Section 3: UK Egg Trade

Trade figures are supplied by HM Revenue and Customs. Trade data marked as provisional may be subject to revision.

Table 3.1: UK Trade in Shell Eggs (a)

| Calendar Months | Imports | | | 12 Month Moving Totals | Exports | | | 12 Month Moving Totals |
|-----------------|--------------|--------------|----------|------------------------------|------------|------------|----------|------------------------------|
| | | | % change | | | | % change | |
| | 2012 | 2013 | 12/13 | | 2012 | 2013 | 12/13 | |
| January | 99 | 151 | 53% | 2,333 | 14 | 29 | 105% | 284 |
| February | 107 | 127 | 19% | 2,354 | 14 | 25 | 74% | 294 |
| March | 168 | 164 | -3% | 2,350 | 16 | 20 | 27% | 299 |
| April | 235 | 126 | -46% | 2,242 | 13 | 22 | 64% | 307 |
| May | 252 | 122 | -51% | 2,112 | 15 | 26 | 70% | 318 |
| June | 217 | 125 | -42% | 2,021 | 24 | 22 | -6% | 316 |
| July | 227 | 128 | -44% | 1,922 | 22 | 25 | 17% | 320 |
| August | 178 | 150 | -16% | 1,893 | 31 | 23 | -27% | 311 |
| September | 196 | 149 | -24% | 1,846 | 29 | 27 | -4% | 310 |
| October | 212 | 144 | -32% | 1,778 | 30 | 33 | 10% | 313 |
| November | 194 | 184 | -5% | 1,768 | 31 | 13 | -56% | 296 |
| December | 197 | | | | 31 | | | |
| Total | 2,281 | 1,571 | | | 269 | 265 | | |

(a) From 2012 comm codes changed from 04070030 to 040721000, 040729100 and 040790100, All trade data are provisional

Table 3.2: UK Trade in Egg Products (a)

| Calendar Months | Imports | | | 12 Month Moving Totals | Exports | | | 12 Month Moving Totals |
|-----------------|--------------|--------------|----------|------------------------------|------------|------------|------------|------------------------------|
| | | | % change | | | | % change | |
| | 2012 | 2013 | 12/13 | | 2012 | 2013 | 12/13 | |
| January | 245 | 254 | 4% | 3,166 | 8 | <i>106</i> | <i>tbc</i> | <i>tbc</i> |
| February | 221 | 280 | 27% | 3,225 | 13 | <i>90</i> | <i>tbc</i> | <i>tbc</i> |
| March | 264 | 252 | -4% | 3,213 | 12 | <i>73</i> | <i>tbc</i> | <i>tbc</i> |
| April | 232 | 252 | 8% | 3,233 | 8 | <i>65</i> | <i>tbc</i> | <i>tbc</i> |
| May | 255 | 310 | 22% | 3,288 | 8 | <i>83</i> | <i>tbc</i> | <i>tbc</i> |
| June | 249 | 309 | 24% | 3,348 | 10 | <i>17</i> | <i>tbc</i> | <i>tbc</i> |
| July | 306 | 306 | 0% | 3,348 | <i>45</i> | <i>14</i> | <i>tbc</i> | <i>tbc</i> |
| August | 309 | 274 | -11% | 3,313 | <i>63</i> | <i>13</i> | <i>tbc</i> | <i>tbc</i> |
| September | 228 | 287 | 26% | 3,372 | <i>67</i> | <i>12</i> | <i>tbc</i> | <i>tbc</i> |
| October | 313 | 335 | 7% | 3,394 | <i>49</i> | <i>12</i> | <i>tbc</i> | <i>tbc</i> |
| November | 284 | 232 | -18% | 3,342 | <i>65</i> | <i>16</i> | <i>tbc</i> | <i>tbc</i> |
| December | 252 | | | | <i>16</i> | | | |
| Total | 3,157 | 3,090 | | | 363 | 500 | | |

(a) Figures are based on SITCs: 025.21, 025.22 and 025.30, converted to shell egg equivalent. All trade data are provisional - Figures in italics are currently under investigation with HMRC, as they are unusually high. We recommend treating these figures with caution until this query is resolved. tbc: to be confirmed when HMRC query is resolved.

Section 4: Methodology, Notes and Revisions Policy

1. The information in this notice is used by the UK government and the EU as evidence for assessing market conditions and evaluating agricultural policy. Other users include the food and farming industry, academia and the general public. Contact details are available on the front page of this notice, for you to send feedback or ask questions about the information provided.
2. **Egg Packing Statistics:** Defra runs a quarterly survey of registered UK egg packing stations. It is a voluntary sample survey of 27 respondents that collects information on throughput by production type and prices of graded eggs and sales of ungraded eggs. The response rate is typically 100 per cent and the survey accounts for 75 per cent of eggs packed in the UK. The survey figures are raised up to give UK estimates using information on the number of commercial laying hens, average egg yields, average mortality rates, the proportion of UK eggs that go through packing stations. Throughput by egg type for packing stations not surveyed is calculated using data provided by packing stations responding to the survey. The raised figures are published in this statistics notice and the associated datasets. The figures in this notice therefore represent all Class A eggs passed over a grader in the UK, including seconds. The prices obtained on the survey are weighted according to the volume of eggs packed by each packing station to obtain average prices for the UK. From 2012, prices include any bonus payments paid to producers.
3. **Egg processing statistics:** Defra runs a quarterly survey of all registered egg processors. It is a voluntary survey of 11 respondents that collects information on the number of eggs bought by egg processors and the quantity of egg products produced. The response rate is typically 100 per cent.
4. In tables that show numbers of eggs the units used are 'thousand cases'. There are 360 eggs in one case.
5. **Trade statistics:** These figures come from HM Revenue and Customs, but are validated and adjusted if necessary prior to publication. The Standard Industrial Trade Classification codes used to produce each table are given in the footnotes below the tables.
6. The data are subject to a variety of validation checks which identify inconsistencies in the data. All data are cleaned prior to publication.
7. The percentage changes shown are calculated using unrounded figures. Thus any percentage changes calculated using the published (rounded) figures may not equate exactly with the changes shown.
8. The UK 12 month moving totals represent the sum of the 12 months up to and including the date indicated. They can be seen as a trend measure that is not affected by seasonality.

Revisions policy:

9. Figures in this notice are provisional and subject to revision. We will provide information about any revisions we make to previously published information in this statistics notice, and the associated datasets. Revisions could occur for various reasons, including:
 - a. if we have not received survey data from respondents we make an estimate based on their previous returns. These estimates will be replaced with actual survey data when it is received.
 - b. survey respondents occasionally supply amended figures for previous periods.
 - c. we may also revise the methodology used to raise the survey data to give UK totals.
10. **This quarter there are minor revisions to previously published trade data from August 2013 due to revised HMRC data.**