

# Annex F

## United Kingdom oil and gas resources

### Introduction

F.1 This section provides background information on the United Kingdom's crude oil, natural gas liquids and natural gas production, disposal and operations. This information is intended as a supplement to that in the commodity balances included in Chapter 3. Most of the data (including those on gas) are obtained from the Department of Energy and Climate Change's Petroleum Production Reporting System (PPRS). Further information can be obtained from DECC's oil and gas website at [www.gov.uk/search?q=oil+and+gas#detailed-results](http://www.gov.uk/search?q=oil+and+gas#detailed-results).

F.2 The annual statistics relate to calendar years, or the ends of calendar years, and the data cover the United Kingdom Continental Shelf [UKCS] (both onshore and offshore). Annual data for production, imports and exports of crude oil during the period 1970 to 2013 are given in Chapter 3, long term trends, Table 3.1.1 ([www.gov.uk/government/publications/petroleum-chapter-3-digest-of-united-kingdom-energy-statistics-dukes](http://www.gov.uk/government/publications/petroleum-chapter-3-digest-of-united-kingdom-energy-statistics-dukes)). The equivalent for natural gas production is Chapter 4, long term trends, Table 4.1.1 ([www.gov.uk/government/publications/natural-gas-chapter-4-digest-of-united-kingdom-energy-statistics-dukes](http://www.gov.uk/government/publications/natural-gas-chapter-4-digest-of-united-kingdom-energy-statistics-dukes)).

### Oil and gas reserves

F.3 Information on oil and gas reserves can be found on DECC's oil and gas website in the statistics section at [www.gov.uk/oil-and-gas-uk-field-data#uk-oil-and-gas-reserves-and-resources](http://www.gov.uk/oil-and-gas-uk-field-data#uk-oil-and-gas-reserves-and-resources).

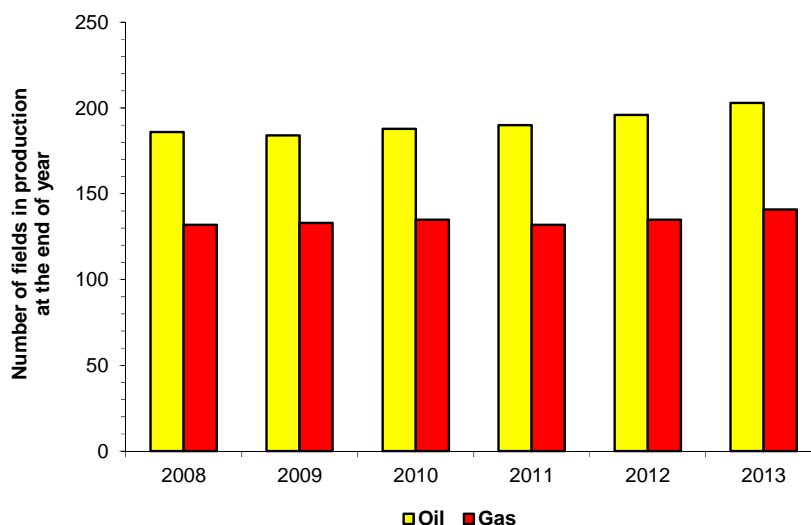
### Offshore oil and gas fields and associated facilities

F.4 Table F.A below shows that the number of offshore oil fields in production or under development rose from 195 at the end of 2008 to 228 at the end of 2013. For offshore gas fields the equivalent increase between the end of 2008 and 2013 was from 135 to 144. Most oil fields also produce gas: these are not double-counted. The increases in the number of fields in production are shown in Chart F.1 (offshore fields in production). Throughout the period since 2008 there have been 5 onshore oil terminals. In 2007 there were 5 onshore associated sub-gas terminals and 9 other (dry) sub-gas terminals. However, during 2010 the three (dry) sub terminals at Easington were combined into a single terminal. In 2011 two (dry) sub-gas terminals at Bacton were combined into a single sub-gas terminal. While there are significant numbers of oil and gas fields onshore, total onshore production is less than 2 per cent of the UK total.

**Table F.A: Offshore oil and gas fields and facilities**

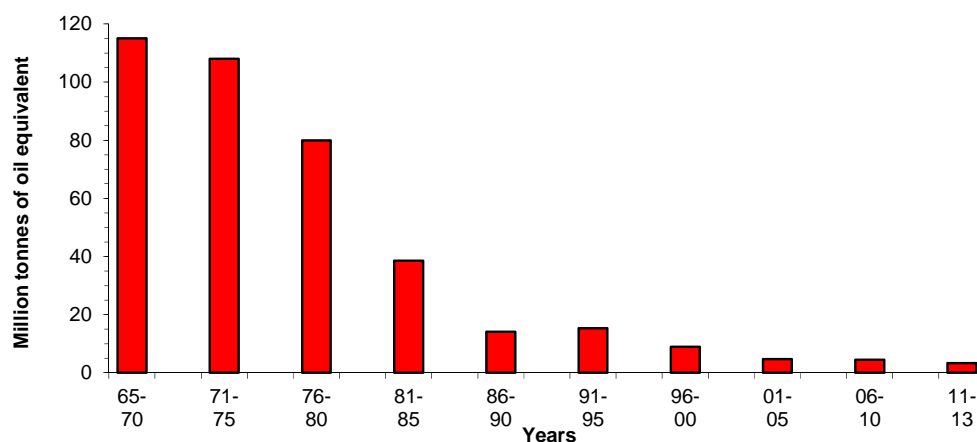
	2008	2009	2010	2011	2012	2013
Offshore oil fields in production	186	184	188	190	196	203
Offshore oil fields under development	9	6	10	14	23	25
Offshore gas fields in production	132	133	135	132	135	141
Offshore gas fields under development	3	4	2	5	8	3

**Chart F.1: Number of offshore oil and gas fields in production, 2008 to 2013**



The average size of fields commencing production in the years 2011 to 2013 was 3.3 million tonnes of oil equivalent (see Chart F.2). The general fall in average field size reflects a decline in the size of fields discovered compared with the early period of the development of the North Sea and the effect of improved technology providing cost-effective means of extracting oil and gas from smaller fields and hitherto unpromising locations. The industry continues to face a range of challenges in order to realise fully the North Sea's potential. Alongside other initiatives, government and industry are tackling these challenges via the joint Government and Industry task force, PILOT.

**Chart F.2: Average size<sup>(1)</sup> of offshore oil and gas fields commencing production**



(1) Recoverable reserves originally present based on the operators' best estimate at the time production commenced. Please note that the start-up of the very large Buzzard field in 2007 does not stand out in this table because of the start-up of a significant number of fields with much smaller reserves.

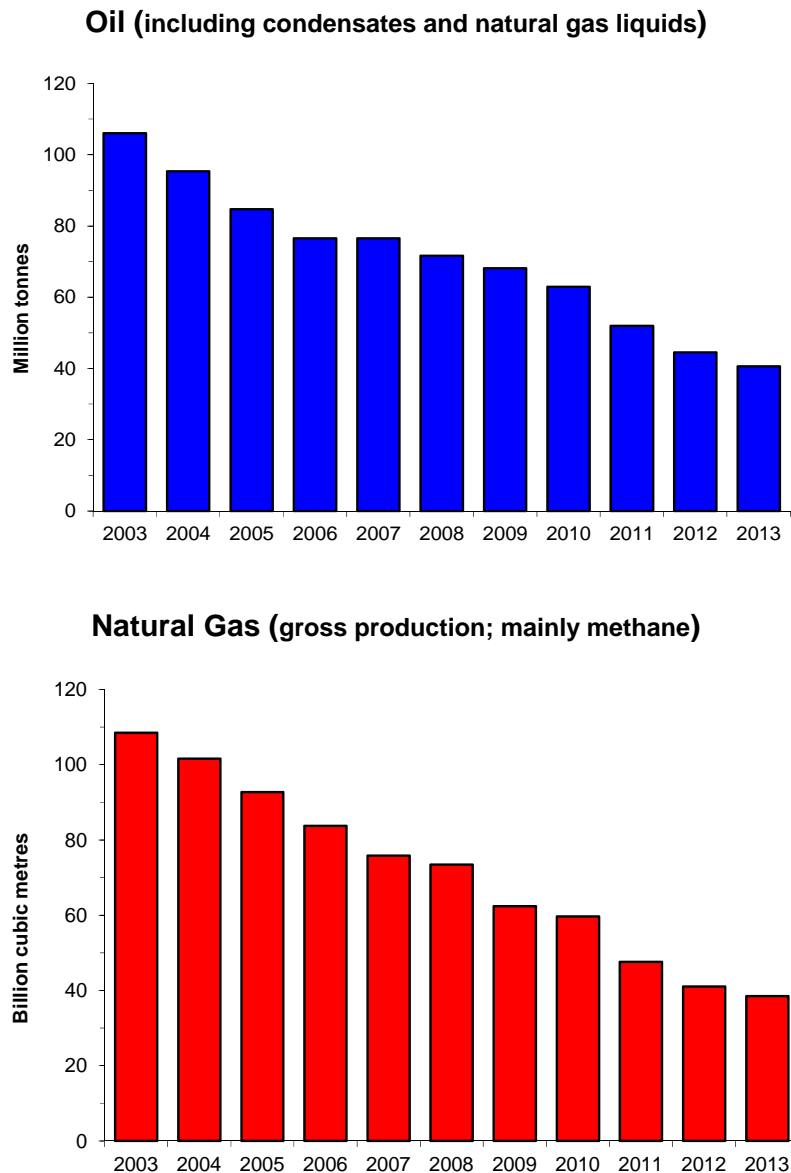
### Production of oil and gas (Tables F.1, F.2 and F.3)

F.6 These tables show production of crude oil, natural gas (mainly methane) and natural gas liquids. Before 2001, oil and gas production were reported based on field level data on well-head production, but aggregate figures are now based on terminal receipts following the introduction in January 2001 of a simplified Petroleum Production Reporting System and subsequent in-house changes to the data collection system. These new data are more accurate measures of production because the oil that leaves a terminal has been stabilised (that is any water, natural gas liquids or other organic compounds have been removed from the crude oil). Gross gas production includes gas used at terminals but excludes any flaring or venting at the terminals (not available before 2001). Except for associated gas fields, field level data can still be found at DECC's oil and gas website at:

[www.gov.uk/oil-and-gas-uk-field-data](http://www.gov.uk/oil-and-gas-uk-field-data).

F.7 Chart F.3 shows the trend in total oil production from 2003 to 2013. After reaching a record level of 137 million tonnes in 1999, production has generally declined each year to 41 million tonnes in 2013, 30 per cent of the peak level. Gross natural gas production (mainly methane) peaked in 2000 at 115 billion cubic metres but has declined to 38 billion cubic metres in 2013, 33 per cent of the peak level.

**Chart F.3: Production of oil and gas, 2003 to 2013**

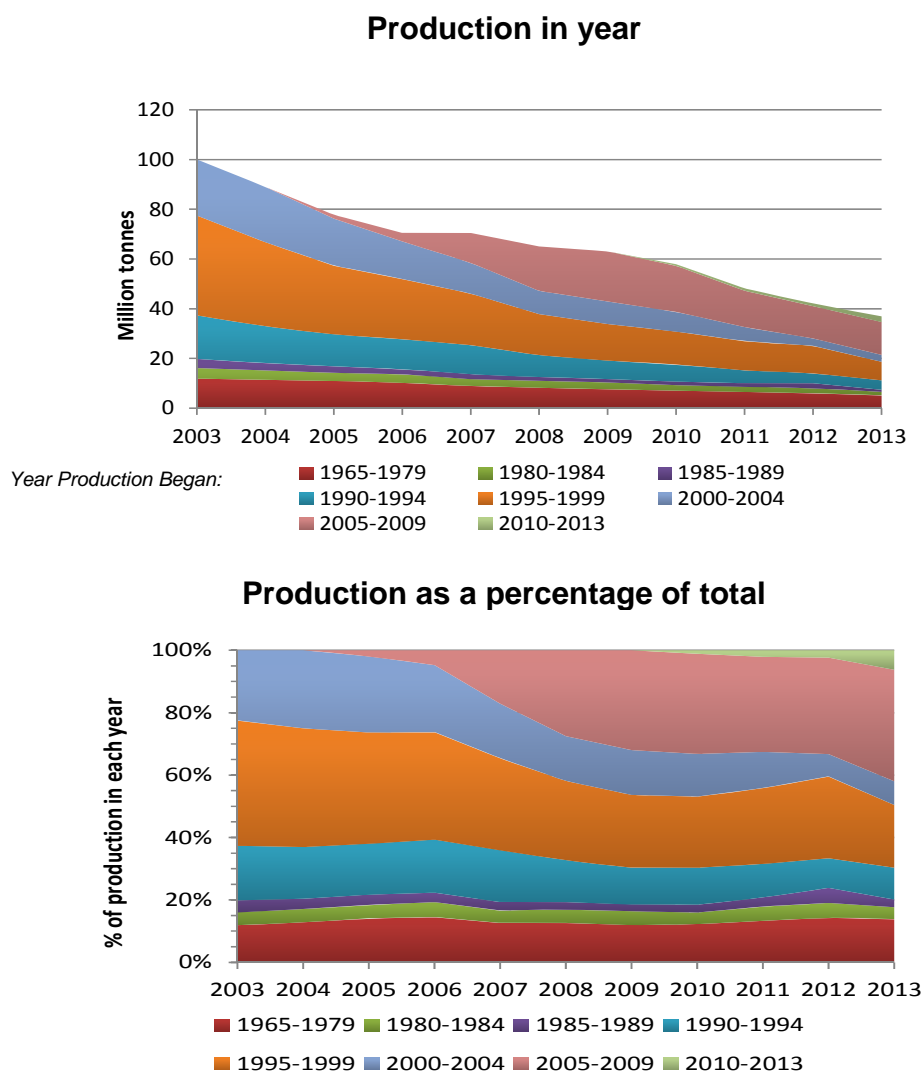


## Production of crude oil

F.8 Production from established oil fields has been dropping in recent years. This is illustrated in Chart F.4 below, where oil production in each year from 2003 to 2013 is broken down by the age group of the fields in production during that year. Two charts are shown, the first with the actual amounts of crude oil produced during the year for each age group and the second with the same data transformed to show what percentage of total production each year comes from each field age group. The data used to produce these charts can be found on DECC's oil and gas website at [www.gov.uk/oil-and-gas-uk-field-data](http://www.gov.uk/oil-and-gas-uk-field-data).

F.9 It can be seen from the production chart that during the 2000s the amount of oil produced from older established fields was in general decline. It is also noticeable that the decline for 1995-1999 developments is greater than for earlier developments. This is because later technology meant crude oil could be extracted at a relatively greater rate leading to a quicker exhaustion of the reserves. In 2013, these newer (post 1994) fields accounted for 70 per cent of the UK's oil production. The charts also clearly reflect the start up and prolonged plateau of the very large Buzzard field at the beginning of 2007 and, for fields that commenced production in the period 2000 to 2004, the suspension of production from the Elgin/Franklin area because of a gas leak in March 2012.

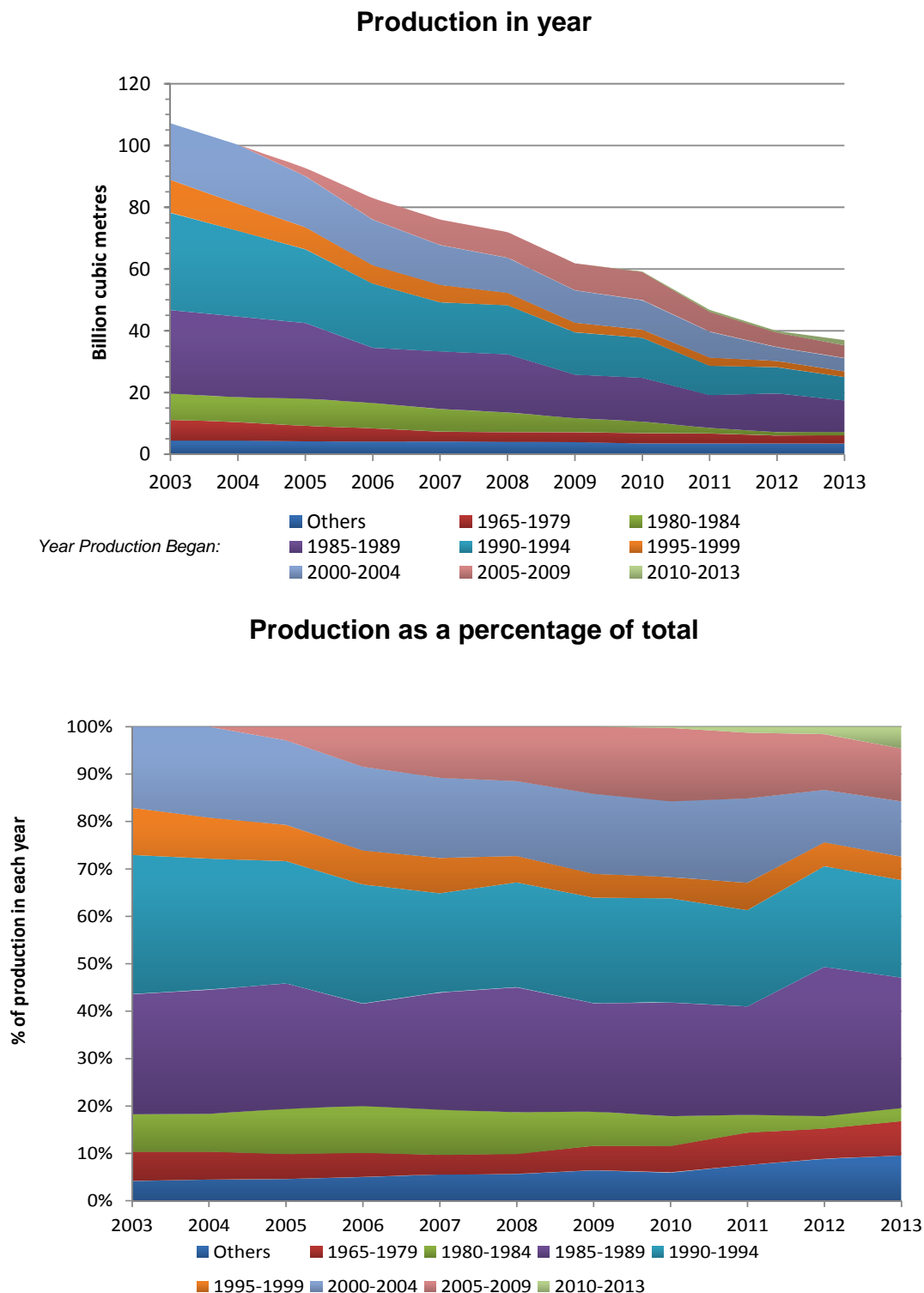
**Chart F.4: Age profile of UK crude oil production**



## Production of gas

F.10 The charts below present gross gas production reported at field/system level and include gas used for drilling, production and pumping operations, but exclude gas flared, vented and re-injected. The data used to produce these charts can be found on DECC's oil and gas website at [www.gov.uk/oil-and-gas-uk-field-data](http://www.gov.uk/oil-and-gas-uk-field-data).

**Chart F.5: Age profile of gross UK gas production**

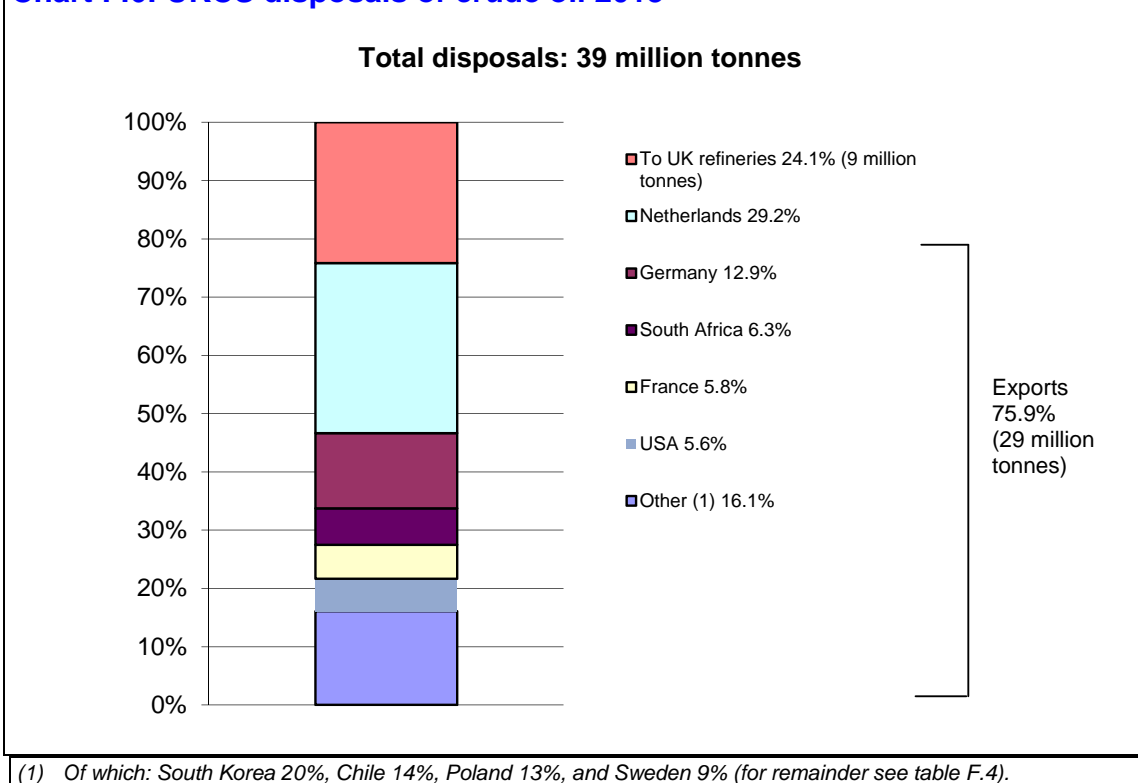


F.11 Gross gas production reached a peak in 2000. Since then production has fallen to 33 per cent of peak production (Chart F.5). As mentioned above (in paragraph F.8) for older oil fields, production from the older gas fields that were discovered in the Southern North Sea has reduced in recent years as the reserves originally present in the fields become depleted. Chart F.5 illustrates this. The apparent extent of the decline in gas production from older fields is not as significant as that shown for oil fields (Chart F.4). This is partly because most associated gas production is not back allocated to individual fields and, therefore, the associated gas is based on terminal start date rather than field start date. However, it should be noted, as mentioned above (in paragraph F.9), for fields that commenced production in 2000 to 2004, the impact of the suspension of production from the Elgin/Franklin area in March 2012 because of a gas leak is clearly reflected.

### Disposals of crude oil (Table F.4)

F.12 Table F.4 and Chart F.6 show the destination of crude oil split between amounts to UK refineries and exports (see technical notes, paragraphs F.14 to F.21) by country of destination (from which it may be transhipped elsewhere). The figures are obtained from returns made to the Department of Energy and Climate Change by operators of oil fields and onshore terminals under the Petroleum Production Reporting System (see paragraphs F.16 to F.18).

**Chart F.6: UKCS disposals of crude oil 2013**



F.13 The exports figures in Table F.4 may differ from those compiled by the United Kingdom Petroleum Industry Association (UKPIA) and published in Chapter 3. UKPIA figures also include re-exports. These are products that have been imported into the UK and stored before being exported from the UK, and were never part of UK production.

## Technical notes and definitions

### Petroleum Production Reporting System

F.14 Licensees operating on the UK Continental Shelf are required to make monthly returns on their production of hydrocarbons to the Department of Energy and Climate Change (DECC). DECC compiles this information in the Petroleum Production Reporting System (PPRS). The PPRS is used to report flows, stocks and uses of hydrocarbon from the well-head through to final disposals from a pipeline or terminal and is the major source of the information presented in this chapter.

F.15 Returns are collected covering field and terminal data compiled by relevant reporting units. Each type of return is provided by a single operator, but usually covers the production of a number of companies, since frequently operations carried out on the Continental Shelf involve several companies working together in joint ventures.

F.16 Every production system has one or more sets of certified meters to measure oil, gas or condensate production. The flows measured by the meters are used to check the consistency of returns and are therefore used to assure the accuracy of the PPRS.

## Exports

F.17 The term exports used in Table F.4 refers to figures recorded by producers of oil and gas for their exports. These figures may differ from the figures for exports compiled by HM Revenue and Customs (HMRC) and given in Annex G. In addition, HMRC now differentiate between EU and non-EU trade by using the term dispatches for trade going to other EU countries, with exports retained for trade going to non-EU countries. The differences can occur between results from the two sources of information because, whilst the trader's figures are a record of actual shipments in the period, for non-EU trade HMRC figures show the trade as declared by exporters on documents received during the period stated.

F.18 In addition, trade in oil frequently involves a "string" of transactions, which can result in the actual destination of the exports changing several times even after the goods have been dispatched. As such, differences can arise between the final country of destination of the exports as recorded by the producers themselves and in the HMRC figures. The HMRC figures also include re-exports. These are products that might originally have been imported into the UK and stored before being exported back out of the UK, as opposed to actually having been produced in the UK.

F.19 In editions of the Digest before 1997, these exports were called "shipments" in an attempt to highlight their difference from the other sources of trade data.

## Units of measurement for gas

F.20 The basic unit of measurement for quantities of flows and stocks is volume in cubic metres at a temperature of 15°C and a pressure of 1.01325 bar.

## Monthly and Quarterly data

F.21 Monthly and quarterly data on the production of crude oil and natural gas from the UKCS, along with details of imports and exports of oil, oil products and gas, are available. This information can be obtained free of charge by following the links given at the Energy Statistics section of the DECC website at:

[www.gov.uk/government/organisations/department-of-energy-climate-change/about/statistics](http://www.gov.uk/government/organisations/department-of-energy-climate-change/about/statistics).

Contacts: Warren Evans  
[warren.evans@decc.gsi.gov.uk](mailto:warren.evans@decc.gsi.gov.uk)  
0300 068 5059

Michael Williams  
[michael.williams2@decc.gsi.gov.uk](mailto:michael.williams2@decc.gsi.gov.uk)  
0300 068 6865

## F.1 Crude oil and Natural Gas Liquids production

		Thousand tonnes																	
CRUDE OIL		Total to end 1997	1998	1999	2000	2001	2002	2003	2004	2005	2006	2007	2008	2009	2010	2011	2012	2013	Total to end 2013
Offshore production:	Offshore loaded (1)	379,268	30,312	34,169	37,317	31,268	29,976	28,315	25,481	21,977	18,875	18,679	16,007	15,753	15,327	13,141	10,769	9,758	736,391
Terminal receipts:	Flotta (2)	258,529	10,061	9,564	8,251	6,677	6,464	5,452	4,967	4,287	3,371	3,369	3,235	3,067	2,834	2,068	1,519	733	334,447
	Flotta West (3)	232	3,753	4,330	4,577	3,723	5,281	4,010	3,535	2,987	2,912	2,390	26	0	0	0	0	0	37,756
	Forties (4)	552,146	38,352	41,565	35,177	32,806	34,059	30,726	27,715	24,996	21,985	27,168	29,213	28,653	25,261	20,192	17,302	18,520	1,005,835
	Nigg Bay (5)	19,840	365	194	137	62	385	293	292	192	106	98	54	338	449	187	142	552	23,687
	Norpipe (6)	8,155	7,619	7,819	6,867	5,870	5,989	5,984	5,077	4,600	5,076	3,941	3,729	3,501	3,054	3,074	2,267	1,852	84,475
	Sullom Voe (7)	821,773	28,805	26,658	22,107	25,059	22,603	20,857	18,508	16,491	15,962	13,441	11,985	10,328	10,180	9,231	9,184	6,039	1,089,211
Total terminal receipts:		1,660,675	88,955	90,130	77,116	74,197	74,781	67,322	60,094	53,553	49,412	50,407	48,242	45,886	41,778	34,752	30,413	27,695	2,575,409
Onshore production:	Rail, road, terminals (8)	38,374	5,161	4,285	3,247	2,921	2,673	2,198	1,941	1,648	1,379	1,271	1,248	1,181	941	678	870	1,003	71,019
Other:	Extended well tests (9)	693	-	-	202	-	-	-	-	-	-	-	-	-	-	-	-	-	895
Total crude oil production:		2,079,010	124,428	128,584	117,882	108,386	107,430	97,835	87,516	77,178	69,666	70,357	65,497	62,820	58,047	48,571	42,052	38,456	3,383,715
Total natural gas liquids production:		96,155	8,205	8,515	8,363	8,292	8,514	8,238	7,858	7,543	6,913	6,218	6,168	5,378	4,915	3,401	2,508	2,190	199,375
Total crude oil and NGL production:		2,175,165	132,633	137,099	126,245	116,678	115,944	106,073	95,374	84,721	76,579	76,575	71,665	68,198	62,962	51,972	44,560	40,646	3,583,089

(1) Production from: Alba, Angus, Ardmore, Balloch, Banff, Beryl, Bittern, Blackbird, Blake, Boa (UK), Buckland, Captain, Chestnut, Clapham, Cook, Curlew, Curlew C, Don South West (from April 2009 to February 2010 see footnote (7)), Donan (Maersk), Douglas, Douglas West, Ettrick, Fergus, Fife, Flora, Foinaven, Gryphon, Guillemot A, NW and W, Harding, Huntington, Kyle, Leadon, Lennox, Lochranza, Loirston, Maclure, Ness, Nevis,

Pict, Pierce, Ross, Saxon, Shelley, Skene, Statfjord (UK), Teal, Teal South, Tullich, West Don (from June 2009 to February 2010 - see footnote (7)).

(2) Production from: Chanter, Claymore, Duart, Galley, Hamish, Highlander, Iona, Ivanhoe, MacCulloch, Petronella, Piper, Renee, Rob Roy,

Rubie, Saltire, Scapa, Tartan, Tweedsmuir, Tweedsmuir South.

(3) Production from: Foinaven. The Flotta contract to process Foinaven crude expired in 2008. Direct disposals from Foinaven are included in the offshore loaded figure.

(4) Production from: Andrew, Arbroath, Arkwright, Bacchus, Balmoral, Bardolino, Beaulieu, Beinn, Birch, Brae Area, Braemar, Brechin, Brenda, Brimmond, Britannia, Brodgar, Bruce, Buchan, Burghley, Buzzard, Caledonia, Callanish, Causeway, Cyrus, Drake, Egret, Elgin, Enock (UK), Erskine, Everest, Farragon, Fleming, Forties, Franklin, Gadwall, Glamis, Glenelg, Goosander, Grouse, Hannay, Hawkins, Heron, Howe, Keith, Kingfisher, Kittiwake, Larch, Lomond, Machar, Madoes, Mallard, Maria, Marnock, Maule, Merganser, Miller, Mirren, Monan, Montrose, Mungo, Nelson, Nicol, Rhum, Rochelle, Scoter, Scott, Seymour, Shearwater, Skua, Starling, Stirling, Sycamore, Telford, Thelma, Tiffany, Toni, Tonto, Wood.

(5) Production from: Athena, Beatrice, Jacky, Lybster.

(6) Production from: Affleck, Auk, Auk North, Blane (UK), Clyde, Fulmar, Gannet A- G, Halley, Jade, James, Janice, Jasmine, Joanne, Judy, Leven, Medwin, Nethan, Orion.

(7) Production from: Alwyn North, Brent, Broom, Causeway, Claire, Columba B/D, Columba E, Conrie, Cormorant (East, North and South), Deveron, Don, Don South West (from March 2010 - see footnote (1)) from Dunbar, Dunlin, Dunlin South West, Eider, Ellon, Falcon, Fionn, Forvie, Grant, Heather, Hudson, Hutton, Hutton NW, Islay, Jura, Kestrel, Loyal, Lyell, Magnus, Magnus South, Merlin, Murchison (UK), Ninian, Osprey, Otter, Pelican, Penguin, Playfair, Schiehallion, Strathspey, Tern, Thistle, West Don (from March 2010 - see footnote (1)).

(8) Production from the Hamble and Holybourne terminals, plus other onshore oil fields.

(9) Extended well tests other than from established fields.



F.2 Gas production to 2013

		Million cubic metres																			
		Total to end 1998	1999	2000	2001	2002	2003	2004	2005	2006	2007	2008	2009	2010	2011	2012	2013	Total to end 2013			
Offshore dry gas:	Terminal receipts and production from direct export fields:																				
	Bacton Perenco (1)	209,317	5,431	5,885	5,179	4,493	3,873	3,336	2,553	2,423	2,342	2,375	2,032	2,003	2,221	2,280	2,031	257,773			
	Bacton ENI Hewett (2)	151,047	7,157	6,655	5,140	3,914	2,937	2,136	2,916	2,901	2,595	1,597	1,516	946	509	0	0	191,965			
	Bacton Shell (3)	265,816	7,966	9,638	10,660	7,466	7,932	8,193	8,230	6,174	4,347	5,706	5,165	4,920	4,937	6,026	4,237	367,413			
	Chiswick (7)	-	-	-	-	-	-	-	-	-	-	542	569	549	842	836	840	4,178			
	Dimlington (4)	43,858	2,892	4,700	4,367	3,484	4,174	4,049	3,478	2,630	2,387	2,078	1,782	1,700	2,436	2,553	3,009	89,578			
	Easington (5)	62,876	2,486	2,412	1,216	2,249	2,158	2,018	1,799	1,644	1,529	1,681	1,025	432	0	0	0	83,905			
	Frigg (FUKA Pipeline) (6)	-	-	-	-	-	2,198	2,170	1,812	1,536	1,421	992	791	605	243	225	166	12,158			
	Grove (7)	-	-	-	-	-	-	-	-	-	-	238	184	409	622	506	398	309	2,666		
	Markham (7)	4,460	485	463	350	304	207	192	377	295	257	144	118	82	47	31	25	7,636			
	Minke (7)	-	-	-	-	-	-	-	-	-	-	138	24	1	0	0	0	165	0		
	Morecambe North (8)	9,804	1,144	4,487	3,775	3,922	3,363	2,865	1,972	1,668	1,195	1,211	1,138	1,178	1,053	1,145	1,987	41,905	1,905		
	Morecambe South (9)	67,936	9,971	8,436	8,224	7,480	7,853	8,181	5,906	2,410	3,692	4,222	1,918	3,489	2,014	1,758	296	143,785	2,860		
	Point Of Ayr (10)	4,769	1,870	2,228	2,539	2,279	2,617	1,882	1,552	1,310	1,130	819	574	526	318	349	146	24,907	2,860		
	Rough (11)	4,370	0	428	17	0	0	0	0	0	0	0	0	0	0	0	0	0	4,815	0	
	Stamford (7)	-	-	-	-	-	-	-	-	-	-	-	-	132	24	3	6	0	164	0	
	Theddlethorpe (12)	175,949	11,349	13,994	11,377	8,577	9,602	7,994	7,689	8,942	8,097	7,300	5,910	5,293	4,318	3,304	3,315	293,010	2,860		
Widmeres (7)	714	320	273	223	174	149	91	54	44	48	31	16	15	17	15	14	2,198	2,860			
Wingate (7)	-	-	-	-	-	-	-	-	-	-	-	-	-	-	126	797	431	1,353	0		
Offshore gas fields' own use (13)	14	-	-	1,026	897	861	912	872	788	684	724	675	803	678	662	648	10,243	2,860	0		
Total offshore dry gas gross production:		1,000,928	51,071	59,599	54,092	45,239	47,924	44,019	39,210	32,765	30,102	29,629	23,769	23,188	20,268	20,384	17,833	1,540,018	2,860		
Offshore associated gas:																					
Terminal receipts:	Bacton SEAL Shell (14)	1	-	93	2,207	7,026	7,391	8,464	7,567	7,101	6,833	7,041	7,033	6,430	5,786	1,935	2,578	77,484	2,860		
	Blane	-	-	-	-	-	-	-	-	-	14	38	37	24	23	13	8	156	2,860	0	
	CATS (15)	21,756	13,605	13,618	13,038	14,213	14,972	13,812	11,660	11,125	7,819	8,243	7,757	7,440	5,397	4,612	4,003	173,071	2,860	0	
	FLAGS (16)	108,821	9,700	10,307	11,651	10,578	7,890	7,720	8,482	7,755	6,659	5,934	4,176	3,569	1,357	934	848	206,380	2,860	0	
	Frigg (FUKA Pipeline) (6)	150,261	9,900	10,315	9,713	11,611	9,719	7,501	7,474	7,996	7,833	6,685	5,647	6,306	3,948	3,590	4,141	262,640	2,860	0	
	Miller (17)	13,631	1,109	624	256	233	100	174	144	51	3	0	0	0	0	0	0	16,325	2,860	0	
	Point Of Ayr (10)	-	-	-	-	-	77	440	730	766	935	1,022	739	601	705	699	825	7,538	2,860	0	
	SAGE (18)	40,302	15,459	16,802	15,350	15,138	15,704	14,827	13,075	11,998	11,570	11,034	9,486	8,507	6,970	6,097	5,557	217,877	2,860	0	
	Offshore oil fields' own use	45,907	3,937	3,763	4,730	4,781	4,565	4,513	4,277	4,170	3,961	3,759	3,698	3,548	3,251	2,775	2,673	194,197	2,860	0	
	Total offshore associated gas gross production:		380,579	53,710	55,522	56,945	63,581	60,418	57,451	53,409	50,962	45,626	43,756	38,564	36,426	27,436	20,654	20,632	1,065,668	2,860	0
	Total offshore gross gas production:		1,381,507	104,781	115,121	111,036	108,819	108,342	101,470	92,619	83,727	75,728	73,385	62,332	59,614	47,704	41,038	38,464	2,605,687	2,860	0
	Onshore production:																				
	Wylch Farm	1,402	149	111	115	108	82	73	61	46	34	44	40	21	3	-	-	0	2,289	2,860	0
		Other terminals / fields	1,434	140	106	91	65	90	49	56	44	77	52	53	71	25	16	11	2,380	2,860	0
	Total onshore gas gross production:		2,836	289	217	205	173	172	122	101	90	111	97	93	92	28	16	11	4,669	2,860	0
	Total gross gas production:		1,384,343	105,070	115,338	111,242	108,992	108,514	101,592	92,735	83,817	75,839	73,482	62,425	59,707	47,733	41,054	38,475	2,610,356	2,860	0
	Own use: (19)		72,819	6,344	7,033	6,770	6,854	6,607	6,627	6,320	5,978	5,399	5,280	5,158	5,181	4,666	4,174	4,030	159,240	2,860	0
Total net gas production:		1,311,524	98,726	108,305	104,472	102,138	101,907	94,965	86,415	77,839	70,439	68,202	57,267	54,526	43,067	36,880	34,445	2,451,115	2,860	0	

(1) Production from: Baird, Beaufort, Bell, Bessemer, Boyle, Brown, Camelot (Central, South and North), Davy, Davy East, Garrow, Indefatigable, Indefatigable South West, Kilmar, Leman (BP), Leman South, North Davy, Trent, Tyne (North and South).

(2) Production from: Arthur, Bure, Bure West, Dawn, Deben, Delilah, Durango, Excalibur, Galehard, Goosander, Grouse, Guinevere, Hewett, Horne, Lancolot, Malory, Montford, Orwell, Thames, Thurne, Tristan, Waveney, Welland North West, Welland South, Wensum, Wissey, Wren, Yare.

(3) Production from: Barque, Barque South, Brigantine (A, B, C and D), Caravel, Carrack, Clipper, Clipper South, Corvette, Cutter, Galleon, Gawain, Indefatigable (Shell), Leman (Shell), Sean, Sean East, Shamrock, Skiff.

(4) Production from: Apollo, Balbago, Ceres, Cleiton, Eris, Johnston, Mercury, Minerva, Neptune, Ravenspurn North, Ravenspurn South, Seven Seas, Whittle, Wollaston.

(5) Production from: Amethyst East, Amethyst West, Hevellyn, Holon, Hyde, Newsham, Rose, West Sole, York.

(6) Production from: Alwyn North, Bruce, Captain, Duart, Dunbar, Eilon, Frigg (uk), Forvie, Galley, Grant, Islay, Ivanhoe/Rob Roy, Jura, Keith, NUGGETS, Piper/Tartan, Renee/Rubie, Rhum, Ross Tweedsmuir, Tweedsmuir South.

(7) Gas exported to the Netherlands.

(8) Production from: Bains, Calder, Dalton, Millom, Morecambe North, Rhyt.

(9) Production from: Morecambe South.

(10) Production from: Hamilton, Hamilton East, Hamilton North, Lennox.

(11) Converted for use as an off-peak storage unit with effect from 1985.

(12) Production from: Alison, Alison KK, Anglia, Ann, Audrey, Bell (Conoco), Boulton, Caister (B and C), Callisto, Callisto North, Cavendish, Ensign, Europa, Ganymede, Hawksley, Hunter, Katy, Ketch, Kelvin, McAdam, Minas, Murdoch, Pickertill, Rita, Saturn (Annabel), Saturn (Atlas, etc.), Saltfleetby, Schooner, Sinope, Topaz, Valiant North, Valiant South, Valkyrie, Vampire, Vanguard, Victor, Viking, Viscount, Vixen, Vulcan, Watt.

(13) Prior to 2001, the own use figure is included within the terminal or field production figure.

(14) Production from: Elgin, Franklin, Glenelg, Halley, Scoter, Shearwater.

(15) Production from: Andrew, Bariff, Drake, Egrst, Erskine, Everest, Farragon, Fleming, Hawkins, Heron, Jade, James, Janice, Jasmine, Joanne, Judy, Lomond, Machar, Madoes, Mamock, Miren, Monan, Mungo, Seymour, Skua, Breagh to Teesside Gas Processing Plant.

(16) Production from: Bittern, Brent, Causeway, Clapham, Clyde, Cook, Cormorant (East, North and South), Curlew, Fulmar, Gannet (A, B, C, D, E, F and G), Goldeneye, Guillemot A, Guillemot North West, Guillemot West, Hows, Kittiwake, Kyle, Leven, Magnus, Magnus South, Mallard, Medwin, Murchison (UK), Nelson, Orion, Pelican, Penguin, Pict, Starford (UK), Strathpey, Teal, Teal South, Thistle.

(17) Gas delivered direct to Boddam (Peterhead) power station by dedicated pipeline.

(18) Production from: Atlantic, Beinn, Beryl, Boa, Brae Area, Braemar, Britannia, Brodgar, Caledonia, Callanish, Cromarty, Devenick, Enoch (UK), Kingfisher, Larch, Macdure, Ness, Nevis, Rochelle, Scott, Skene, Thelma, Tiffany, Toni, Tullich.

(19) Includes gas used at onshore gas terminals

### F.3 Natural Gas Liquids net production

	Thousand tonnes														
	1999	2000	2001	2002	2003	2004	2005	2006	2007	2008	2009	2010	2011	2012	2013
<b>Offshore oil pipeline terminals (1):</b>															
Ethane	534	567	485	511	528	495	402	356	362	333	299	257	229	142	133
Propane	852	682	903	969	954	849	773	678	627	672	673	554	526	324	339
Butane	705	483	857	960	961	866	778	722	659	684	684	584	438	281	311
Condensate	424	439	422	532	532	500	469	419	411	412	406	393	328	181	123
<b>Total offshore oil terminals:</b>	<b>2,516</b>	<b>2,171</b>	<b>2,667</b>	<b>2,972</b>	<b>2,975</b>	<b>2,710</b>	<b>2,422</b>	<b>2,175</b>	<b>2,058</b>	<b>2,101</b>	<b>2,062</b>	<b>1,788</b>	<b>1,521</b>	<b>928</b>	<b>905</b>
<b>Offshore associated gas terminals (2):</b>															
Ethane	1,173	1,321	1,114	1,085	1,003	978	1,011	925	791	869	701	608	370	280	208
Propane	1,890	1,966	1,747	1,700	1,579	1,551	1,374	1,239	1,141	1,254	994	908	521	422	324
Butane	1,203	1,229	1,044	1,059	997	975	856	810	744	748	593	575	330	285	232
Condensate	950	1,025	1,033	1,086	1,050	1,062	1,380	1,311	1,057	798	651	592	285	264	215
<b>Total offshore associated gas terminals:</b>	<b>5,217</b>	<b>5,541</b>	<b>4,938</b>	<b>4,930</b>	<b>4,629</b>	<b>4,566</b>	<b>4,621</b>	<b>4,285</b>	<b>3,733</b>	<b>3,670</b>	<b>2,938</b>	<b>2,683</b>	<b>1,505</b>	<b>1,251</b>	<b>980</b>
<b>Offshore dry gas terminals (3):</b>															
Condensate	582	505	548	497	545	516	450	412	390	364	346	427	375	316	286
<b>Total offshore dry gas terminals:</b>	<b>582</b>	<b>505</b>	<b>548</b>	<b>497</b>	<b>545</b>	<b>516</b>	<b>450</b>	<b>412</b>	<b>390</b>	<b>364</b>	<b>346</b>	<b>427</b>	<b>375</b>	<b>316</b>	<b>286</b>
<b>Onshore production (4):</b>															
Ethane	-	-	-	-	-	-	-	-	-	1	0	0	0	0	0
Propane	104	76	68	59	45	40	34	29	28	25	26	17	0	13	20
Butane	96	70	61	52	41	23	15	11	10	7	6	0	0	0	0
Condensate	-	-	10	4	3	3	1	1	0	0	0	0	0	0	0
<b>Total onshore production:</b>	<b>200</b>	<b>146</b>	<b>139</b>	<b>115</b>	<b>89</b>	<b>66</b>	<b>49</b>	<b>41</b>	<b>38</b>	<b>33</b>	<b>32</b>	<b>17</b>	<b>0</b>	<b>13</b>	<b>20</b>
Total Ethane	1,707	1,888	1,599	1,596	1,531	1,473	1,414	1,281	1,153	1,203	999	866	599	422	341
Total Propane	2,846	2,724	2,718	2,728	2,578	2,440	2,181	1,946	1,796	1,952	1,692	1,479	1,047	759	683
Total Butane	2,004	1,782	1,962	2,071	1,999	1,864	1,648	1,543	1,412	1,439	1,284	1,159	768	566	542
Total Condensate	1,956	1,969	2,013	2,119	2,130	2,081	2,300	2,143	1,858	1,574	1,403	1,412	987	761	624
<b>Total production:</b>	<b>8,515</b>	<b>8,363</b>	<b>8,292</b>	<b>8,514</b>	<b>8,238</b>	<b>7,858</b>	<b>7,543</b>	<b>6,913</b>	<b>6,218</b>	<b>6,168</b>	<b>5,378</b>	<b>4,915</b>	<b>3,401</b>	<b>2,508</b>	<b>2,190</b>

(1) Production from: Flotta, Forties, Nigg, Norpipe, Sullom Voe.

(2) Production from: Bacton SEAL Shell, CATS, FLAGS, Frigg (UK), SAGE.

(3) Production from: Bacton Perenco, Tullow, Shell, Dimlington, Easington,

Barrow, Point Of Ayr, Theddlethorpe. Includes exports from fields that export gas directly to the Netherlands using the Dutch offshore pipeline system.

(4) Production from: Hamble, Holybourne, Knapton, Wytch Farm.

## F.4 Disposals of crude oil<sup>(1)</sup>

	Thousand tonnes															
	1998	1999	2000	2001	2002	2003	2004	2005	2006	2007	2008	2009	2010	2011	2012	2013
UK refineries	46,887	47,170	38,335	32,770	32,060	29,960	27,692	27,971	24,484	25,878	24,574	23,797	21,328	20,789	13,056	9,363
Exports:	77,322	80,078	79,061	75,749	75,367	68,073	59,553	49,226	44,923	45,129	40,808	39,102	36,898	28,112	28,536	29,432
Albania	-	-	84	-	-	-	-	-	-	-	-	-	-	-	-	-
Bahamas (2)	257	143	65	-	-	-	-	67	88	-	84	-	-	-	-	-
Belgium	1,035	1,193	1,038	362	392	560	-	62	-	77	483	-	242	465	-	70
Canada	808	625	1,667	3,447	3,527	2,786	2,882	1,706	2,471	1,208	490	615	380	292	528	47
Chile	-	-	-	-	-	-	-	-	-	-	-	666	626	523	234	846
China	-	1,588	519	260	1,364	159	157	-	-	-	-	-	-	-	-	349
Denmark	-	-	-	79	64	57	-	-	104	-	240	424	589	551	247	376
Finland	788	929	690	1,674	184	245	236	552	790	1,626	250	-	-	-	-	156
France	15,261	15,177	11,975	11,725	10,019	9,842	8,528	4,685	7,249	5,154	3,501	2,540	3,322	2,354	1,662	2,268
Germany	17,406	11,879	10,732	11,043	8,058	8,854	9,521	11,000	10,251	10,271	10,542	6,382	7,186	5,210	6,287	4,999
Gibraltar	-	-	77	-	-	-	-	-	-	535	-	-	109	82	-	-
Greece	-	-	-	-	135	-	-	-	-	-	-	-	-	-	-	-
India	-	277	1,638	-	-	-	-	-	-	245	135	-	92	152	-	162
Italy	1,219	1,819	1,459	957	1,075	236	2,178	1,961	1,269	401	399	-	169	347	65	495
Lebanon	-	-	-	-	-	-	-	-	-	-	81	-	-	-	-	-
Lithuania	-	-	251	-	-	-	-	-	-	-	-	-	-	-	-	-
Martinique (2)	87	-	84	-	178	330	385	754	646	700	347	6	-	-	83	159
Morocco	-	-	163	-	-	-	-	-	-	-	-	-	-	-	-	-
Netherlands (3)	15,591	16,540	18,912	20,194	19,794	16,418	12,325	10,462	10,517	11,245	11,192	15,570	13,426	11,832	12,764	11,341
Norway	1,087	1,297	542	329	223	545	331	796	156	954	326	352	970	157	559	419
Poland	1,494	682	368	-	-	-	-	87	319	415	239	321	669	535	160	798
Portugal	1,157	1,394	714	413	1,078	1,054	563	250	606	85	-	14	80	86	-	-
Puerto Rico	-	-	-	-	-	212	103	-	60	-	-	-	-	-	-	-
Republic of Ireland	82	69	-	322	964	977	719	783	100	171	-	75	157	-	-	65
Singapore	-	-	-	-	-	-	-	-	38	117	83	-	165	226	-	-
South Africa	1,028	-	-	-	263	-	-	-	271	-	-	258	126	-	-	2,434
South Korea	-	260	-	-	-	480	85	-	-	81	605	886	78	619	3,530	1,253
Spain	3,403	4,040	2,107	2,025	1,062	589	808	575	389	612	1,211	475	339	159	-	321
St Lucia (2)	-	-	-	-	-	-	-	-	-	-	-	131	499	135	-	-
Sweden	1,266	1,024	636	1,313	1,596	992	1,025	588	455	630	671	362	171	1,004	897	552
Turkey	-	-	-	-	-	-	-	-	-	471	277	80	595	-	195	166
USA	15,017	21,142	25,340	21,496	24,288	22,259	17,801	13,817	9,056	9,774	9,651	9,868	6,905	3,299	1,166	2,157
Virgin Islands (2)	-	-	-	-	-	-	-	93	-	355	-	-	-	-	-	-
Unknown	-	-	-	110	1,103	1,478	1,906	988	88	-	-	78	-	84	159	-
<b>Total disposals (4)</b>	<b>124,209</b>	<b>127,248</b>	<b>117,396</b>	<b>108,519</b>	<b>107,427</b>	<b>98,033</b>	<b>87,245</b>	<b>77,197</b>	<b>69,407</b>	<b>71,007</b>	<b>65,382</b>	<b>62,899</b>	<b>58,225</b>	<b>48,900</b>	<b>41,592</b>	<b>38,795</b>

(1) Monthly data for aggregate disposals to refineries and exports are available - See paragraph F.2.1.

(2) Some of the exports to the Caribbean area may have been for transshipment to the USA.

(3) Exports to the Netherlands include oil for transshipment or in transit to other destinations (e.g. Belgium and Germany).

(4) Includes disposals of onshore production. The difference between disposals and production as shown in

Table F.2 is accounted for by platform and other field stock changes and by terminal and transit stock changes.