



Immunisation news

National flu marketing campaign launched on 6 October

This year's campaign runs for four weeks and targets those under 65s who have long-term health conditions, pregnant women and the parents of children aged two to four who are eligible for the free flu vaccination. The campaign consists of radio and press advertising supported by digital search and PR activity, including a twitter campaign, netmums partnership and promotion of a flu film illustrating how quickly flu can spread. The advertising encourages people not to put off getting their flu vaccination – see the [Resources](#) section below.

Children and the flu vaccine

My child turns two years in October, can she have the flu vaccine?

All children aged two, three or four years on 1 September 2014 are eligible for a flu vaccination. Those who have turned two after that date are not eligible, unless they are in a risk group. Doctors can use clinical judgement to take into account the risk of serious illness if the child was to get influenza and vaccinate accordingly.

Which vaccine should children under two have?

Children aged six months to under two years who are in risk groups should be offered the injected inactivated flu vaccine. If an at-risk child turns two years before the date of vaccination, however, Fluenz can be offered, provided there are no contraindications, in which case injected inactivated flu vaccine should be used.

Clarification of flu vaccine birth cohorts for 2014/15

In England, all children aged two, three and four years (but not five years or older) on 1 September 2014 (i.e. children whose date of birth is on or after 2 September 2009 and on or before 1 September 2012) will be offered the live attenuated influenza vaccine Fluenz Tetra, unless they are contraindicated. The eligible birth cohorts are as follows:

- Age two years (born 2 September 2011 – 1 September 2012 inclusive)
- Age three years (born 2 September 2010 – 1 September 2011 inclusive)
- Age four years (born 2 September 2009 – 1 September 2010 inclusive)

Flu vaccination template letters

Letter templates for local adaptation are now available for schools and GP practices to invite all this year's flu cohorts for their vaccinations, see [web link 14](#) and [web link 15](#).

Changes to the recommendations regarding the administration of more than one live vaccine

For many years, it has been recommended that when two live vaccines are needed by the same individual, they should either be given on the same day or at least four weeks later. With the recent introduction of more live vaccines into the routine schedule – rotavirus and nasal flu, for example – the Joint Committee on Vaccination and Immunisation has reviewed the evidence that originally established this recommendation and has concluded that intervals between vaccines should be based upon specific evidence for any interference of those vaccines. See [web link 13](#) for the full recommendations.

MMR is stand-out performer in latest COVER data

MMR coverage in the UK at five years of age reached record levels in the last quarter (April to June) at 94.9% for the first dose and 89.2% for the second dose. Generally all other children's vaccinations maintained good levels of uptake at one, two and five years of age. For full details see [web link 17](#).

Prenatal pertussis vaccine uptake surveys

A comprehensive guide to the new automated collection of data via the ImmForm website is now available at [web link 1](#).

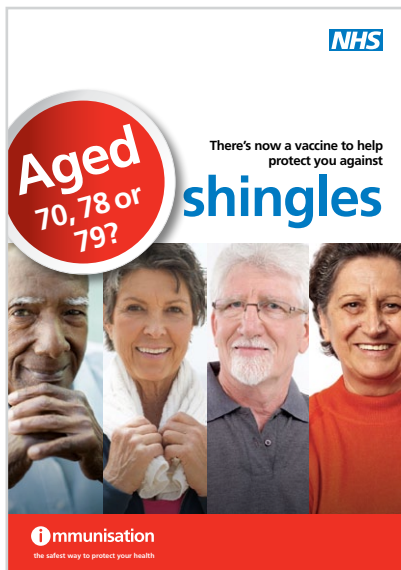
HPV vaccine uptake from September 2013 to June 2014

The recently published tables at [web link 2](#) present provisional data for the uptake of the first, second and third dose of the human papillomavirus (HPV) vaccine among 12- to 13-year-old girls in England from 1 September 2013 to June 2014.

News just in – pertussis and rotavirus vaccine coverage reports published

The latest vaccine uptake rates for the pertussis vaccination in pregnant women and rotavirus in young babies have been published, see [web link 22](#). The coverage of pertussis vaccination at 54% is down on the previous reporting period but seems to be gradually increasing. The rotavirus vaccine uptake is 92% for the first dose and 87.5% for the second in children evaluated at 25 weeks of age between February and September 2014 according to data from 90% of all GP practices in England.

Resources



Aged 70, 78 or 79? Shingles vaccination available for you now

The shingles leaflet for the vaccination programme starting on 1 September is now available at [web link 3](#). Please note, that if you saved or printed out this pdf before 20 August, it contained an error on the dates of birth of those 78- and 79-year-olds who are eligible for the vaccination. The correct pdf has subsequently been uploaded. The correct eligible dates are all those born between 2 September 1934 and 1 September 1936, inclusive.

Can you remember how old you were on 1 September last year?

No? Not that easy to work out, is it? So this year, we've produced a calculator that allows people to find out their age on 1 September 2014 and thereby find out if they're eligible for the shingles vaccination. You simply enter the patient's date of birth in the box provided, click OK and you're told their age on 1 September 2014 and whether they're eligible or not. See [web link 4](#).



Shingles information for health professionals updated

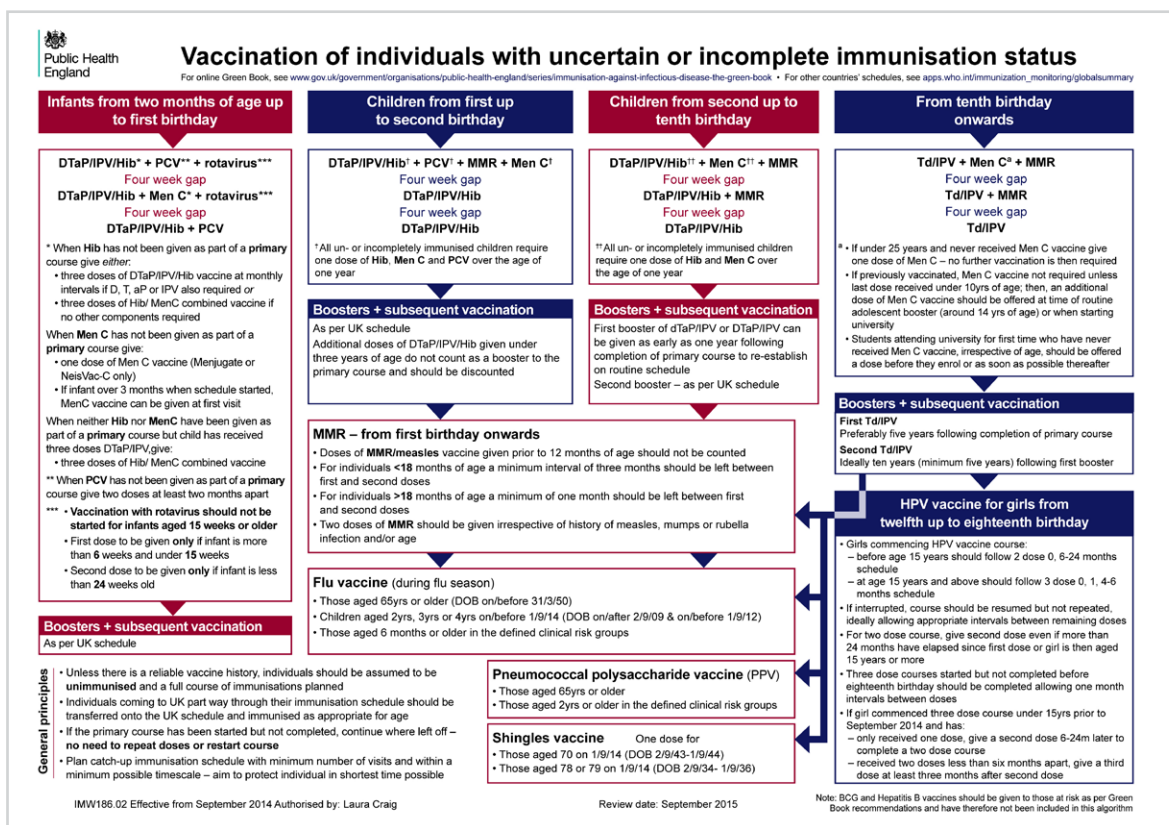
The following resources at [web link 5](#) have been updated:

- The letter announcing the programme
- The Q&A for health professionals
- The training slide set

And the Green Book chapter at [web link 6](#) has also been updated.

A young child has just arrived from the Middle East to live here. Which immunisations should they have?

This algorithm at [web link 7](#) provides an easy-to-follow guide on how to deal with this type of situation. It has been updated to include the recent changes to the meningococcal group C, HPV and shingles vaccination schedules.



New flu posters to support marketing campaign

These reproductions of the images used in the media to promote this winter's flu vaccination programme, are now available to order in the usual way at [web link 3](#).



Flu resources revamped

This poster and leaflet have been redesigned to match the other flu publications in this year's portfolio.

5 reasons to vaccinate your child against flu

- There's now a safe and effective nasal spray vaccine to protect children aged two years and older against flu
- The vaccine is easy to give and painless and has been used safely in other countries for a number of years
- Flu can be a nasty illness that can lead to a stay in hospital, especially for children with other medical conditions like heart disease and diabetes
- If your child gets flu they won't be able to go to school/nursery for several days and will need to be cared for at home. You may have to take time off to look after them
- Protecting your child can stop the flu spreading to other children he/she may come into contact with, and to the rest of the family, in particular to grandparents, who may be at particular risk from flu.

What should I do?
If your child is two, three or four years of age, your GP will contact you to arrange a vaccination appointment. If you haven't heard by the middle of October contact your surgery to request an appointment.

For more information visit: www.nhs.uk/child-flu

Flu Immunisation 2014/15
Helping to protect everyone, every winter

Does your son or daughter have a long-term condition?

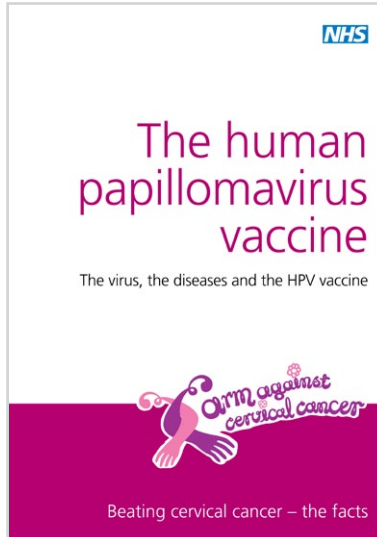
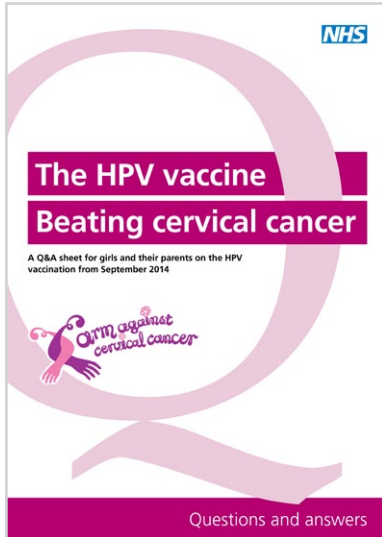
Getting them vaccinated can protect your child from flu

Flu Immunisation 2014/15
Helping to protect everyone, every winter

They are available to order in the usual way at [web link 3](#).

HPV Q&A and The facts updated

These two publications have been updated to reflect the change in the number of doses from three to two from 1 September, see [web link 8](#). They are only available as pdfs for local downloading and printing.

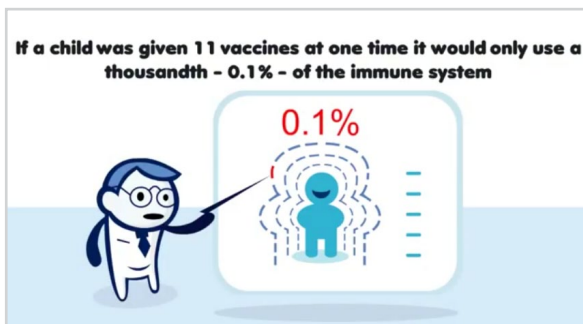


Influenza Green Book chapter 19 updated

The information regarding the administration of flu vaccine to those with egg allergy has recently been clarified at [web link 9](#).

Immunisation videos for the waiting room

Three short animations describing how vaccinations work, how they provide herd immunity and how they don't overload the immune system are now available on YouTube so they can be downloaded to waiting room video screens. Although they have sound tracks these are not essential to the understanding of the messages because the script is repeated in the captions. They can be viewed at [web links 18, 19 and 20](#).



Vaccine wastage

Stockpiling and fridge failures

Please remember not to stockpile vaccines. This leads to an increased risk of vaccine wastage due to either fridge failures or stock expiring before it can be used. You should aim to hold no more than 2–4 weeks' worth of stock.

So far in 2014, fridge failures reported through ImmForm (fridge malfunctions, fridge doors left open, fridges switched off in error) have resulted in an indicative loss of £1,000,000-worth of stock. It is therefore vital not to stockpile and to ensure your fridge is serviced regularly. Reporting vaccine wastage incidents to your local health protection teams and through the incident reporting pages on ImmForm is good practice – see [web link 10](#).

Vaccine supply

Availability of DTaP/IPV vaccines

Repevax vaccine is no longer available and alternative vaccines are available to order through ImmForm instead – see [web link 11](#).

Boostrix-IPV should only be ordered for the maternal pertussis programme.

Importantly, unlike Repevax, **Boostrix-IPV is not licensed for use as a pre-school booster vaccine.**

Infanrix IPV should only be ordered for the pre-school booster at three years and four months of age.

Before ordering either vaccine, please remember to check what's already in your fridge. Any Repevax which has not expired can still be used for the pre-school booster, rather than being wasted. Please ensure you do not stockpile vaccines and only order enough for 2-4 weeks' use.

You can download a poster which highlights the correct vaccine to use in each patient group at [web link 16](#).

We suggest that you print these out and put them up somewhere visible near your vaccine fridge to avoid errors occurring.

Infanrix IPV Hib and Pediacel

Pediacel is currently unavailable to order. Infanrix IPV Hib has recently been introduced into the programme and is available to order, with no restriction on volume.

Where possible and if local stock allows, it is preferable that the same DTaP/IPV-Hib containing vaccine be used for all three doses of the primary course. However, vaccination should never be delayed because the vaccine used for previous doses is not known or unavailable.

Why are caps sometimes placed on orders for vaccines?

When a new vaccine becomes available, and/or when demand for a vaccine is expected to be high, orders sometimes need to be controlled initially to ensure equity of supply across the whole network. Some vaccines have relatively short shelf lives and if some practices over-order (especially where vaccines are supplied in packs of ten), the vaccines may go out of date before they can be used and end up being wasted. This may mean that other practices get fewer vaccines than they ordered and therefore won't be able to run their vaccination sessions. Under these, and sometimes, other circumstances, temporary caps are placed on the quantity of vaccine that can be ordered during any one week so that deliveries are made little and often in the routine ordering cycle rather than all at once.

It is appreciated that this central management of stock can cause problems in primary care and every effort is made to give as much notice as possible and keep to a minimum the time that these caps are in place. We provide updates through the ImmForm website and special issues of Vaccine Update. Vaccine Update is also the place to look for details of when vaccines will become available to order. Generally, for instance, the children's flu vaccine is not available to order until the end of September, so we recommend that vaccination sessions for children are not booked until October when initial vaccine deliveries can be more assured.

Gardasil syringe new tip cap being introduced

A new tip cap (PRTC) is gradually being introduced on Gardasil syringes and both the current (EZGrip) and the new tip caps will co-exist for a period of time.

<p>EZ Grip Tip Cap Configuration FM27 Elastomer</p> <p>TODAY</p>			<p>PRTC Tip Cap Configuration 7025/65 Elastomer</p> <p>FUTURE</p>	<ul style="list-style-type: none"> • There are no other changes to this presentation of Gardasil • No changes are required to the method of preparation or administration
--	---	---	---	---

Zostavax

The shingles programme for 2014/15 started on 1 September 2014 and covers those aged 70, 78 and 79 years on that date – see [web link 12](#).

Please order Zostavax alongside your usual childhood vaccine ordering to minimise the number of additional orders that have to be processed at this very busy time of year.

PPD2TU (Mantoux test)

Tuberculin purified protein derivative (PPD) containing two tuberculin units per 0.1ml (2TU) is currently available to order but a restriction of one order for one pack per week is in place. Please note that each pack of PPD2TU contains ten vials with a minimum of ten doses per vial, i.e. 100 doses in all.

BCG vaccine

BCG vaccine is currently available to order but a restriction of ten packs per order per week is in place.

Please note that each pack of BCG vaccine contains ten vials with a minimum of ten doses per vial, i.e. 100 doses in all.

Movianto UK deliveries over Christmas and New Year holidays

Due to the Christmas and New Year holidays, there will be no vaccine deliveries or order processing by Movianto UK on:

- Thursday 25 December 2014
- Friday 26 December 2014
- Thursday 1 January 2015

Deliveries normally scheduled for these days will not be rescheduled, so please bear this in mind when placing orders. For example, if your delivery day is Thursday 18 December, the cut off for placing an order for a delivery for use over the holiday period is 11:55am on Tuesday 16 December. If you miss this date, the next Thursday delivery will be Thursday 8 January. The normal ordering and delivery cycle resumes on Friday 2 January*.

Please see the table on the following page for the revised schedule.

Orders can still be placed on ImmForm on all days, but they will not be processed by Movianto UK for dispatch at their warehouse on the days listed, hence the revised order cut-off date.

We recommend that you have two to four weeks of vaccine stock held in your fridge, so you may wish to consider this when ordering for the holiday period. We also recommend that you have at least two contacts registered on ImmForm, as cover for leave etc. To register, please see the ImmForm Helpsheets 8 on how to register at [web link 21](#).

The Vaccine Supply and ImmForm Teams wish all their customers a very Merry Christmas and a Happy New Year.

Delivery date	Order cut-off date	Order cut-off time
Monday 22/12/2014	Thursday 18/12/2014	11:55 am
Tuesday 23/12/2014	Friday 19/12/2014	11:55 am
Wednesday 24/12/2014	Monday 22/12/2014	11:55 am
Thursday 25/12/2014	Closed – NO DELIVERIES	
Friday 26/12/2014	Closed – NO DELIVERIES	
Monday 29/12/2014	Tuesday 23/12/2014	11:55 am
Tuesday 30/12/2014	Wednesday 24/12/2014	11:55 am
Wednesday 31/12/2014	Monday 29/12/2014	11:55 am
Thursday 01/01/2015	Closed – NO DELIVERIES	
*Friday 02/01/2015	Tuesday 30/12/2014	11:55 am
Monday 05/01/2015	Wednesday 31/12/2014	11:55 am
Tuesday 06/01/2015	Friday 02/01/2015	

* As Scotland has a bank holiday on Thursday 2 January, no deliveries will be made to Scotland on that day.

If you do not receive your scheduled delivery on either the 24 or 31 December for reasons outside of the control of the distributor, then Movianto will make every effort to re-deliver the vaccines on the next working day available. To check the status of your deliveries please contact Movianto directly on 01234 248632 or email them on customercare.uk@movianto.com

Web links

- web link 1 <https://www.gov.uk/government/collections/vaccine-uptake#pertussis-vaccine-uptake-in-pregnant-women>
- web link 2 <https://www.gov.uk/government/statistics/hpv-vaccine-uptake-1-september-2013-to-30-june-2014>
- web link 3 https://www.orderline.dh.gov.uk/ecom_dh/public/home.jsf
- web link 4 <https://www.gov.uk/government/publications/shingles-vaccination-for-adults-aged-70-78-or-79-years-of-age-calculator>
- web link 5 <https://www.gov.uk/government/collections/shingles-vaccination-programme>
- web link 6 <https://www.gov.uk/government/publications/shingles-herpes-zoster-the-green-book-chapter-28a>
- web link 7 <https://www.gov.uk/government/publications/vaccination-of-individuals-with-uncertain-or-incomplete-immunisation-status>
- web link 8 <https://www.gov.uk/government/collections/immunisation#human-papillomavirus-hpv>
- web link 9 <https://www.gov.uk/government/publications/influenza-the-green-book-chapter-19>
- web link 10 <https://vaccinesupply.immform.dh.gov.uk/Incident/StockIncident.aspx>
- web link 11 <https://www.gov.uk/government/publications/childhood-vaccinations-for-summer-2014>
- web link 12 <https://www.gov.uk/government/publications/shingles-vaccination-for-adults-aged-70-78-or-79-years-of-age-calculator>
- web link 13 <https://www.gov.uk/government/publications/revised-recommendations-for-administering-more-than-1-live-vaccine>
- web link 14 <https://www.gov.uk/government/publications/childhood-flu-immunisation-programme-from-september-2014-to-2015-information-for-parents-and-schools>
- web link 15 <https://www.gov.uk/government/publications/flu-vaccination-invitation-template-letter--2>
- web link 16 <https://www.gov.uk/government/publications/childhood-vaccinations-for-summer-2014>

Continued overleaf

- web link 17 <https://www.gov.uk/government/statistics/cover-of-vaccination-evaluated-rapidly-cover-programme-2014-to-2015-quarterly-data>
- web link 18 <https://www.youtube.com/watch?v=8fXUmTkIAQw>
- web link 19 <https://www.youtube.com/watch?v=f0D6EtXVA5E>
- web link 20 <https://www.youtube.com/watch?v=n2IHH5oHGlo>
- web link 21 <https://www.gov.uk/government/publications/how-to-register-immform-helpsheet-8>
- web link 22 <https://www.gov.uk/government/publications/health-protection-report-volume-8-2014/hpr-volume-8-issue-41-news#new-vaccine-coverage-data-updates-for-pertussis-and-rotavirus-programmes-published>