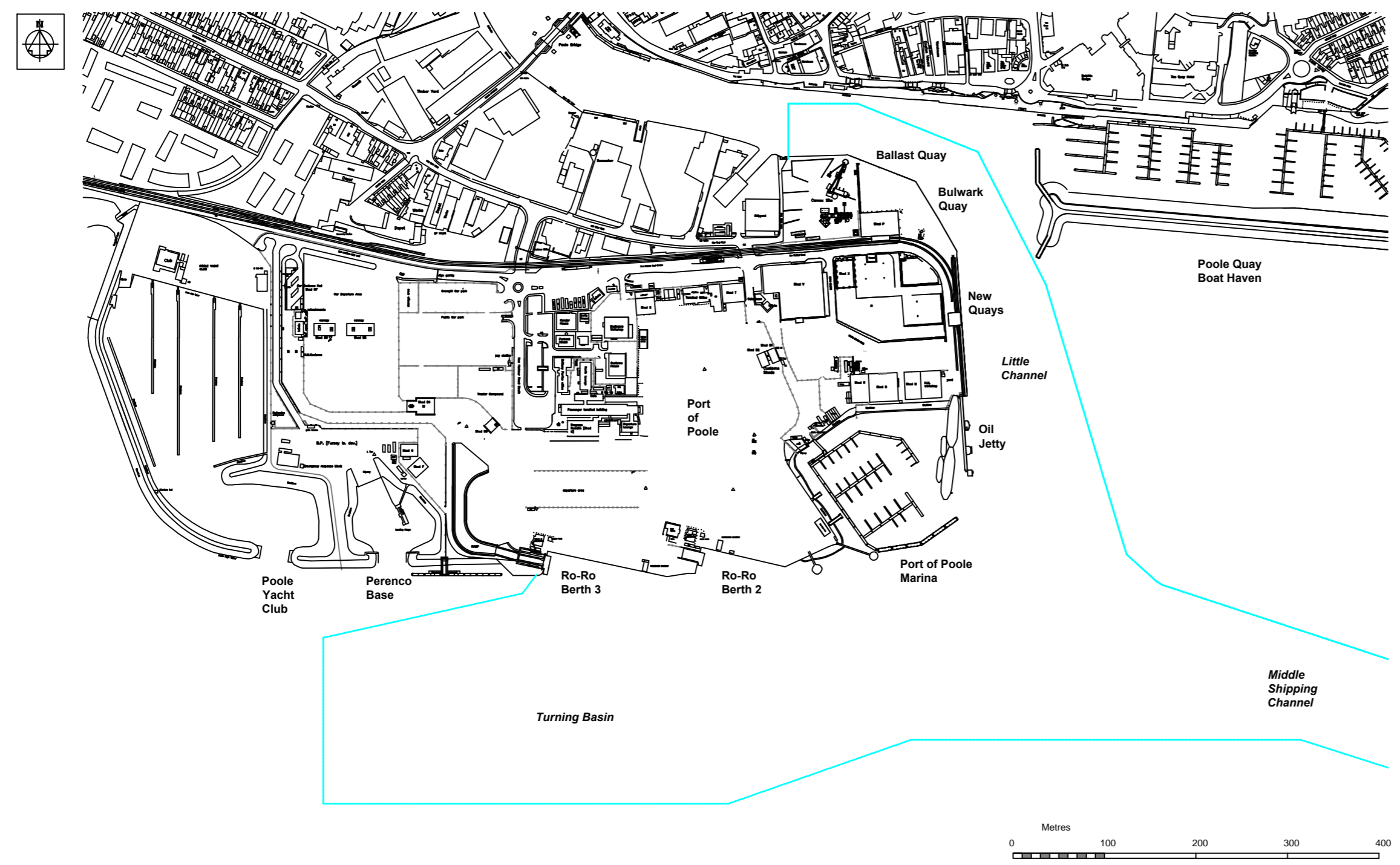


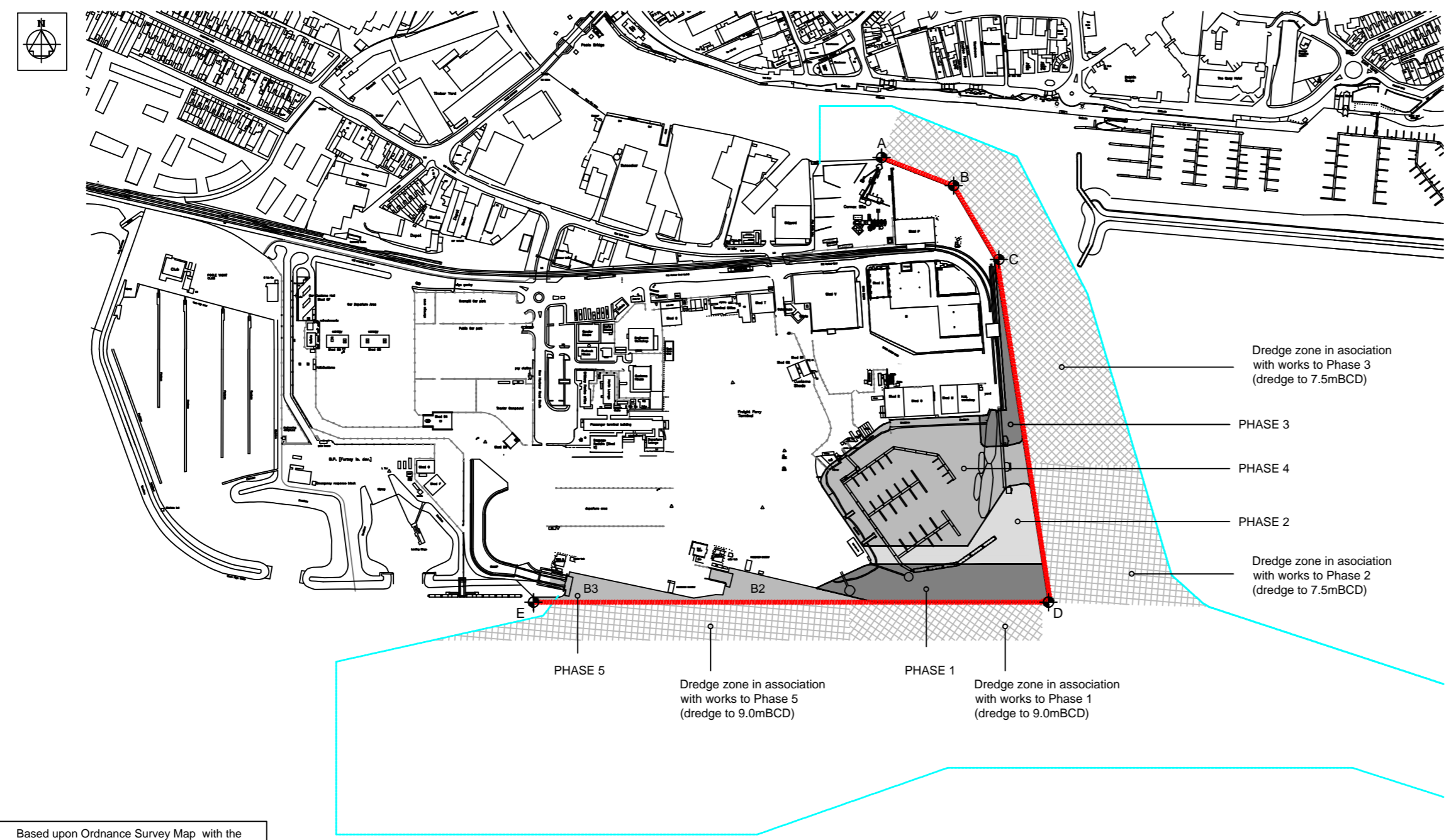
NOTES

1. Building and land uses shown are indicative only.

Existing Layout



Proposed Development



LEGEND

- Limits of Deviation
- Denotes maintained channels

Defined Limits of Deviation:

Ref	
A	50 42.688N, 001 59.290W
B	50 42.671N, 001 59.223W
C	50 42.629N, 001 59.184W
D	50 42.433N, 001 59.140W
E	50 42.433N, 001 59.601W

Based upon Ordnance Survey Map with the sanction of the Controller of H.M. Stationery Office

revision	amendment	date
----------	-----------	------

POOLE HARBOUR COMMISSIONERS

The Poole Harbour Revision (Works)
Order 2014

Layout Plan

Andy Ramsbottom MSc CEng MICE
Harbour Engineer
Harbour Office, 20 New Quay Road
Hamworthy, Poole, Dorset. BH15 4AF

drawn	pba
date	20.01.2014
scale	1:5000@A2

drawing no.	HRO1	revision
-------------	------	----------

