

Benefit Cap: GB households capped to March 2014

Published: May 8 2014

Frequency: Quarterly

Coverage: Great Britain

Theme: People and Places



**Department
for Work &
Pensions**

Issued by:

Information, Governance and
Security Directorate
Department for Work and
Pensions

Telephone:

Press Office: 0203 267 5129

Website:

www.gov.uk/dwp

Statistician:

Paul McReady
Information, Governance and
Security Directorate
Department for Work and Pensions
Room BP5201
Benton Park Road
Longbenton
Newcastle-upon-Tyne
NE98 1YX

Telephone: 0191 216 2332

paul.mcready@dwp.gsi.gov.uk

Next publication:

If you have any comments or
suggestions regarding this
publication, please contact DWP via
stats-consultation@dwp.gsi.gov.uk.

ISBN:

978-1-78425-166-6

Introduction

The Government has introduced a cap on the total amount of benefit that working-age households can receive so that, broadly, households on out-of-work benefits will no longer receive more in welfare payments than the average weekly wage for working households. If affected, a household's Housing Benefit entitlement will be reduced so that the total amount of benefit received is no longer higher than the cap level.

The benefit cap applied from 15 April 2013 in Bromley, Croydon, Enfield and Haringey Local Authorities. Remaining Local Authorities applied the cap between 15 July 2013 and the end of September. As such all households identified as being appropriate to be capped were capped by the end of September 2013. The benefit cap is currently administered through Housing Benefit, and as such a household which is not in receipt of Housing Benefit will not currently be in scope for the cap.

The cap applies to the combined income from benefits including:

- the main out-of-work benefits (Jobseeker's Allowance, Income Support, and Employment and Support Allowance except when the Support Component is in payment);
- Housing Benefit;
- Child Benefit
- Child Tax Credit; and
- other benefits such as Carer's Allowance.

One-off payments are not included in the assessment of benefit income.

Households which include someone who is entitled to Working Tax Credit are excluded from the cap. This is intended to increase the incentive for people to find employment because once they are in receipt of Working Tax Credit their benefits will no longer be subject to the cap. There is also a grace period of 39 weeks during which time the cap will not apply to households where the claimant, or if applicable their partner, has worked for 50 weeks out of the 52 weeks preceding their last day of work.

All households with someone, including a child, with a current award of Disability Living Allowance, Personal Independence Payment or Attendance Allowance, or receiving the support component of Employment and Support Allowance or Industrial Injuries Benefits (and those receiving War Disablement Pension and the equivalent payments from the Armed Forces Compensation Payments Scheme) are exempt from the benefit cap. This is in recognition of the extra costs disability can bring.

The exemption is also extended to households which include a member who is in receipt of War Widow's and War Widower's Pension. This is in line with the Government's commitment to offer special treatment to those who are serving or who have served in the Armed Forces, and to their dependants, in order to avoid disadvantage and recognise sacrifice for those seriously injured or killed. The cap only applies to household in which at least one person is in receipt of a working age benefit.

Methodology

Data Source

Data from the Single Housing Benefit Extract (SHBE) has been used to produce this analysis. SHBE is a monthly electronic scan of claimant level data direct from Local Authority computer systems. It has been designed to provide sufficient information for all current and future statistical purposes and is now the single source of Housing Benefit data. From April 2013, a Benefit Cap field was added to SHBE which provides the weekly amount that the Housing Benefit of a household had been capped by. This marker is central to the production of this analysis.

Off flow data is merged to Her Majesty's Revenue and Customs (HMRC) and DWP benefits data to determine outcomes, for further details refer to Annex B.

Data coverage and reporting month

Local Authorities extract and return their data to DWP over a four week rolling period based on an extraction schedule for each Local Authority.

This release shows the latest set of capped households in Great Britain reflecting national implementation of the benefit cap. The "March" data shown here has typically been collated between 3rd March and 27th March. Each Local Authority may extract their data up to a week before the date it is scheduled to be returned to DWP.

The specific collation reference periods for earlier months are shown in Annex A.

Definition of a household

For the purposes of the benefit cap policy and hence this analysis, **a household is defined as one or two adults (living together as a couple) plus any dependent children they are living with.** This may also be termed a 'benefit unit'. This differs from the Office of National Statistics (ONS) who define a household as one person alone; or a group of people (not necessarily related) living at the same address who share cooking facilities and share a living room or sitting room or dining area. A household by the ONS definition may contain multiple benefit units.

There are a small number of cases where an individual / household have more than one Housing Benefit claim, for these cases, only the most recent claim is reported on.

Identification of capped households

Over time, households will be both newly capped – and will cease to be capped (for a variety of reasons). The data in the Results section shows both **snapshot** (the number of households subject to the cap at the latest month available) and **cumulative** (the number of capped households since the introduction of the benefit cap). The difference between these two figures relates to households flowing off the cap. This relates purely to households no longer subject to the benefit cap. These Official Statistics may also not report on very short term capped households. This will occur in instances where a household is capped and then ceases to be capped all within the space of monthly SHBE returns. In any such cases, the recorded SHBE data will not flag that a household has been capped.

Benefit cap off flows by outcome

Households may flow on and off the cap numerous times as circumstances change. Two measures of benefit cap off flows are presented in this release:

- 1) The number of households moving off the cap and remain no longer capped (as at reporting month).
- 2) The cumulative month on month count of households moving off the cap (including some households who are capped again).

There may be multiple reasons for the cap to no longer apply (and these may change over time). Thus, to avoid multiple counts a hierarchical approach to the household outcome is used for reporting:

1. Household has an open Working Tax Credit claim.
2. Household is in receipt of other benefit resulting in exemption (Employment Support Allowance support group / Disability Living Allowance / Industrial Injuries / Personal Independent Payment).
3. Household is no longer claiming housing benefit.
4. Amount of Housing Benefit claimed has reduced.
5. Household benefit income below cap level without a change to Housing Benefit amount.
6. Change in original household structure (i.e. change, addition or loss of a partner – does not include dependents).
7. Change in recorded Local Authority.
8. Other – includes grace period, operational factors / timing, no longer working age.

Note - Not all outcomes reported on are a specific reason for a household to flow off the benefit cap, for example a change in Local Authority, but may indicate a change in circumstance leading to an off flow. There may also be instances where, for example, a household moves into employment, but does not have an open Working Tax Credit claim.

For further details on the methodology and limitations in reporting on benefit cap outcomes, see Appendix B.

Key findings

Cumulative measures

Since the introduction of the benefit cap on 15th April 2013 to March 2014:

- **Over 42.2 thousand households had their housing benefit capped.**
- 46% of households affected by benefit cap were found in London.
- Of the top 20 Local Authorities with the highest number of households affected by the benefit cap, only one was outside London - Birmingham.

Snapshot measures

Of data extracted in March¹ 2014:

- **Over 27.7 thousand households had their housing benefit capped, no overall change from the caseload at February 2014.**
- 60% of households had between 1 and 4 children and 36% had 5 or more children.
- 59% of households constituted a single parent with child dependants.
- 80% of households were capped by £100 or less.

Off-flow measures

Since the introduction of the benefit cap on 15th April 2013 to March 2014:

- Just over 14.5 thousand households (34%) who have (previously) been capped are no longer subject to the cap as at March 2014. **Of these, 5.7 thousand are exempt with an open Working Tax Credit claim which is 39% of those no longer subject to the cap.**
- 16.6 thousand households have had a spell off the cap between April 2013 and March 2014. This includes cases not capped as at March 2014 and cases who have been capped, left the cap and then been capped again. Of these, 35% have had a recorded Working Tax Credit claim in that period.

¹ See methodology – Data coverage and reporting month.

In this Summary

This Summary contains Official Benefit Cap Statistics up to 27th March 2014.

This report contains information on cumulative and point-in-time Benefit Cap caseload as well as information on households who have flowed off the Benefit Cap.

Both cumulative and point-in-time caseloads are further broken down by:

Geography- Region and Local Authority.
Amount capped
Number of children
Household type

Off-flows from the benefit cap are further broken down by:

Off-flow reason
Geography- Region

Further Benefit Cap statistics

Benefit Cap statistics will be updated in August 2014 with the intention of publishing via Stat-Xplore.

The full suite of Benefit Cap statistics can be accessed here:

<https://www.gov.uk/government/collections/benefit-cap-statistics>

Table of Contents

Page

A. Official Statistics and commentary

| | |
|--|---|
| A1. Cumulative number of households capped from 15 th of April 2013 to March 2014 | 6 |
| A2. Point-in-time total of households capped at March 2014 by amount capped | 7 |
| A3. Point-in-time total of households capped at March 2014 by number of children | 7 |
| A4. Benefit Cap off-flows by month of off-flow | 8 |

B. Tables on cumulative number of households capped

| | |
|------------------------------|----|
| B1. GB and Regional | 9 |
| B2. Top 20 Local Authorities | 10 |

C. Tables on point-in-time total of households capped at March 2014

| | |
|------------------------------|----|
| C1. GB and Regional | 11 |
| C2. Top 20 Local Authorities | 12 |

D. Tables on Benefit Cap off-flows

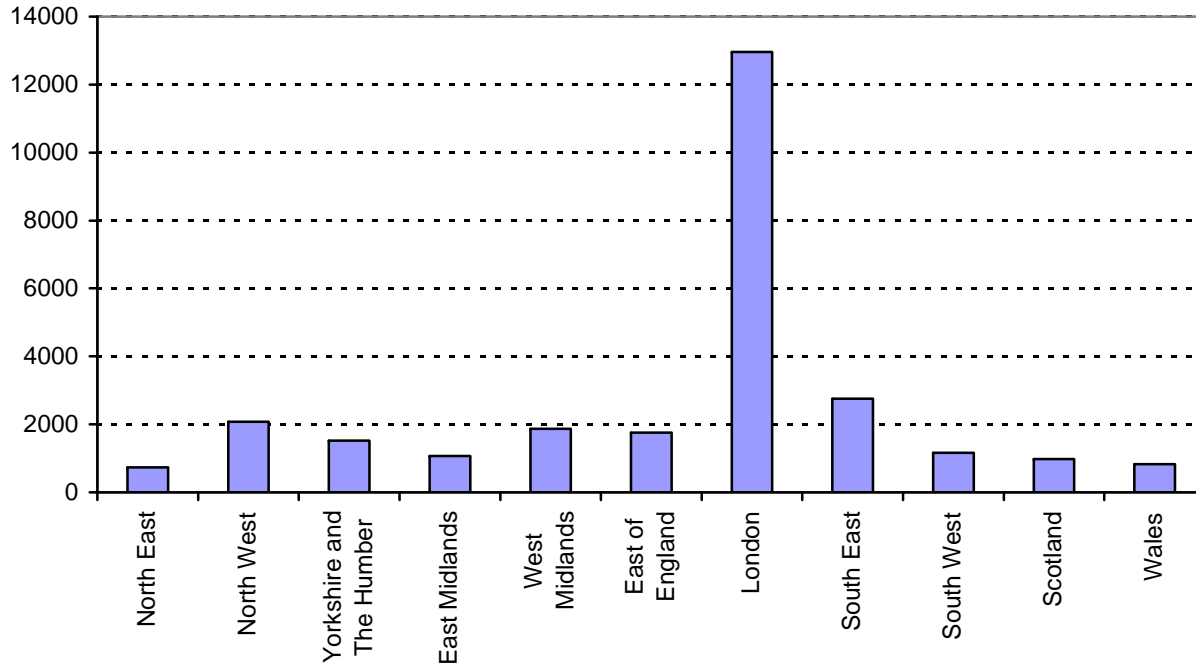
| | |
|---|----|
| D1. GB Households no longer capped by outcome | 13 |
| D2. Households (totals) no longer capped as at March 2014 by outcome and region | 14 |
| D3. Households (%) no longer capped as at March 2014 by outcome and region | 15 |
| D4. Cumulative household off-flows, May 2013 to March 2014 | 16 |

E. Notes

17

Section A. Official Statistics and commentary

A1 : Cumulative total number of households capped from 15 April 2013 and March 2014, by region



Source: DWP IGS Directorate 100% Single Housing Benefit Extract (SHBE)

Key messages

Chart A1 shows the cumulative number of households since the implementation of the Benefit Cap to March 2014 in each region.

- Over 42.2 thousand households had their housing benefit capped.
- 46% of households affected by the benefit cap were found in London.
- Of the top 20 Local Authorities with the highest number of households affected by the benefit cap, only Birmingham was outside London.

Chart A2: Point-in-time total of households capped at March 2014 by amount capped

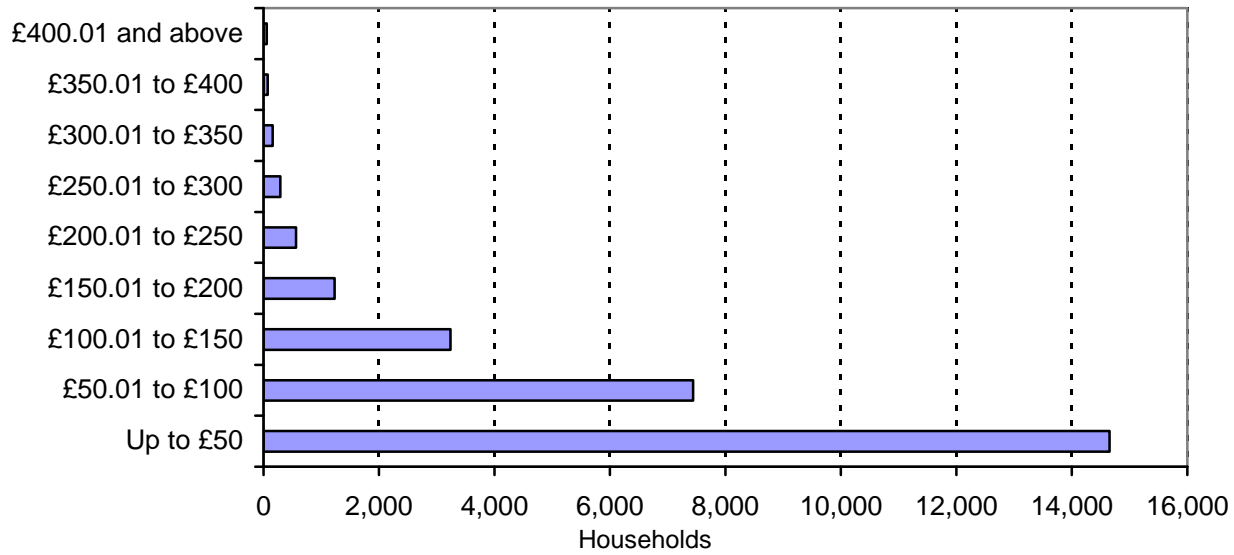
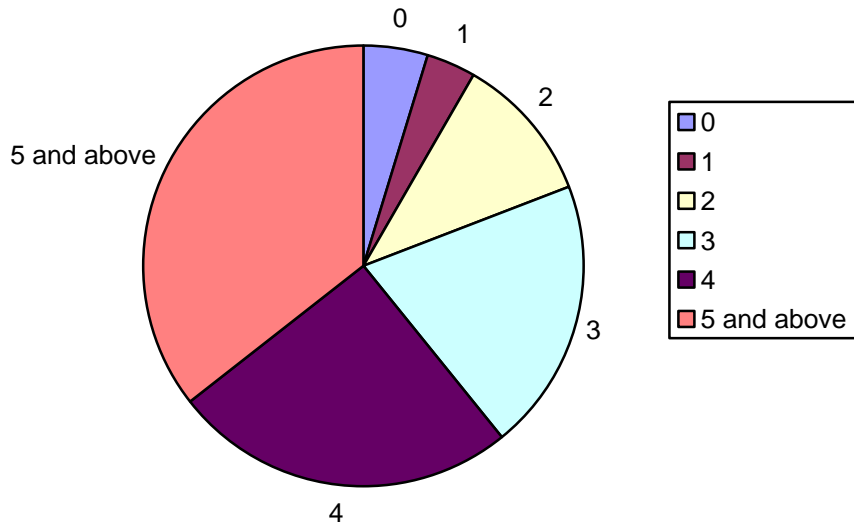


Chart A3: Point-in-time total of households capped at March 2014 by number of children

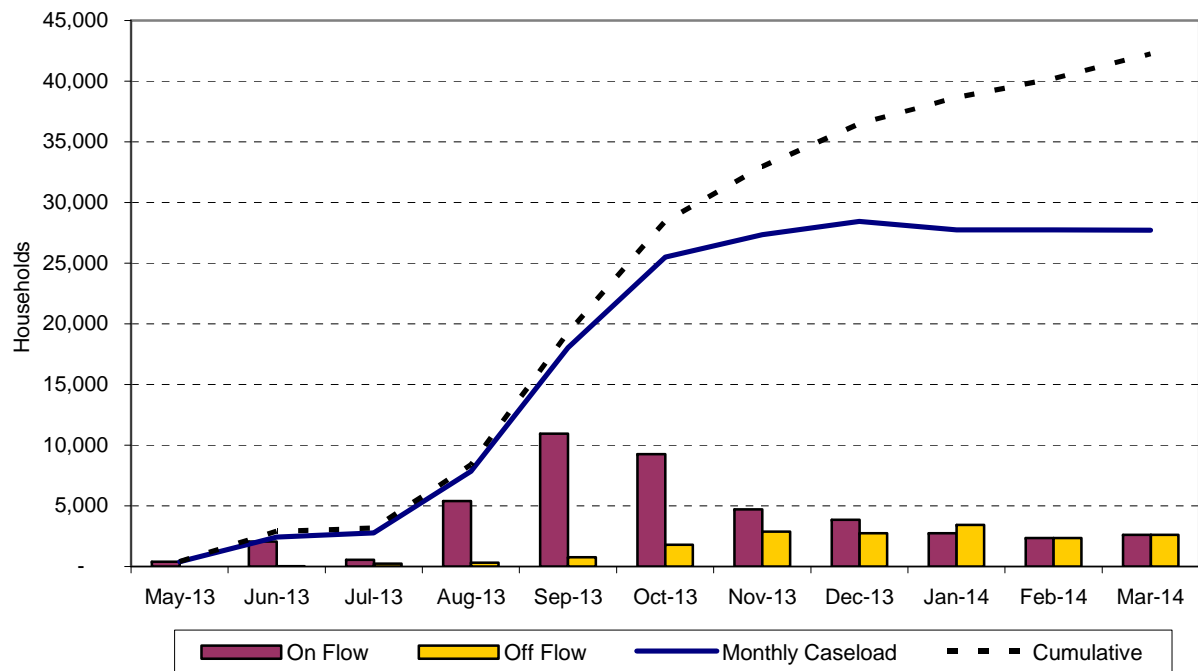


Key messages

Of data extracted in March 2014:

- Over 27.7 thousand households had their housing benefit capped, no overall change from the caseload at February 2014.
- 60% of households had between 1 and 4 children and 36% had 5 or more children.
- 59% of households constituted a single parent with child dependants.
- 80% of households were capped by £100 or less.

Chart A4: Benefit Cap off-flows by month of off-flow



Source: DWP IGS Directorate 100% Single Housing Benefit Extract (SHBE)

Key messages

Since the introduction of the benefit cap on 15th April 2013 to March 2014:

- Just over 14.5 thousand households (34%) who have (previously) been capped are no longer subject to the cap as at March 2014. **Of these, 5.7 thousand are exempt with an open Working Tax Credit claim which is 39% of those no longer subject to the cap.**
- 16.6 thousand households have had a spell off the cap between April 2013 and March 2014. This includes cases not capped as at March 2014 and cases who have been capped, left the cap and then been capped again. Of these, 35% have had a recorded Working Tax Credit claim in that period.
- For single households with a child dependent under 5, approximately 29% who have (previously) been capped are no longer subject to the cap. Of these, approximately 38% are exempt with an open Working Tax Credit and no longer subject to the cap.

Section B. Tables on cumulative number of households capped

The cumulative count (the number of capped households since the introduction of the benefit cap – Table 1.1) is based on the lead claimant. The addition or loss of a partner within a household (or a household moving to a different LA and still subject to the cap) would not be counted as an additional benefit cap case where the lead claimant remains the same and there is no break in claim. The geographical region or Local Authority reflects the initial Local Authority in which the cap was applied to that household.

Note: A full Local Authority breakdown of GB capped households is available in the accompanying spreadsheet to this publication, called Number of GB households capped since the introduction of benefit cap by Local Authority- up to March 2014.

Table B1- GB and regional by households capped

| | Total |
|--------------------------|--------------|
| Cumulative total | 42,252 |
| North East | 1,056 |
| North West | 2,958 |
| Yorkshire and The Humber | 2,173 |
| East Midlands | 1,638 |
| West Midlands | 3,115 |
| East of England | 2,709 |
| London | 19,627 |
| South East | 4,286 |
| South West | 1,730 |
| Wales | 1,252 |
| Scotland | 1,710 |

Source: DWP IGS Directorate 100% Single Housing Benefit Extract (SHBE)

Notes

1. Cells in this table have been randomly adjusted to avoid the release of confidential data. For this reason, individual cells may not sum to totals.
2. Geographical region is based on the initial Local Authority in which the lead individual was subject to the cap.

Table B2- Top 20 Local Authorities by households capped

| Local Authority | Total |
|------------------------|--------------|
| Enfield | 1,781 |
| Brent | 1,660 |
| Ealing | 1,214 |
| Birmingham | 1,127 |
| Tower Hamlets | 1,099 |
| Westminster | 1,096 |
| Haringey | 1,042 |
| Newham | 840 |
| Croydon | 792 |
| Barnet | 762 |
| Hackney | 660 |
| Wandsworth | 644 |
| Redbridge | 588 |
| Barking and Dagenham | 580 |
| Waltham Forest | 564 |
| Lewisham | 531 |
| Hammersmith and Fulham | 511 |
| Harrow | 492 |
| Kensington and Chelsea | 460 |
| Lambeth | 458 |

Source: DWP IGS Directorate 100% Single Housing Benefit Extract (SHBE)

Notes

1. *Cells in this table have been randomly adjusted to avoid the release of confidential data. For this reason, individual cells may not sum to totals.*
2. *Geographical region is based on the initial Local Authority in which the lead individual was subject to the cap.*

Section C. Tables on point-in-time total of households capped at March 2014

The caseload time series (Table 2.1) reflects the number of households subject to the benefit cap at that particular point in time

Table C1 – Caseload time series- May 2013 to March 2014

| Month | Total |
|----------------------------|--------------------|
| May 2013 | 396 |
| June 2013 | 2,432 ² |
| July 2013 | 2,755 |
| August 2013 | 7,843 |
| September 2013 | 18,024 |
| October 2013 | 25,508 |
| November 2013 | 27,352 |
| December 2013 ³ | 28,434 |
| January 2014 | 27,743 |
| February 2014 | 27,735 |
| March 2014 | 27,720 |

Source: DWP IGS Directorate 100% Single Housing Benefit Extract (SHBE)

Notes

Cells in this table have been randomly adjusted to avoid the release of confidential data. For this reason, individual cells may not sum to totals.

² From 15 July the Benefit cap was introduced nationally. The July 2013 SHBE is the first data to include national claimants.

³ See methodology – Data coverage and reporting month.

Table C2- Number of households capped as at March⁴ 2014

| | | Total, GB |
|-----------------------------|---------------------------------|------------------|
| Number of capped households | | 27,720 |
| Amount Capped (£ per week) | Up to £50 | 14,651 |
| | £50.01 to £100 | 7,443 |
| | £100.01 to £150 | 3,240 |
| | £150.01 to £200 | 1,234 |
| | £200.01 to £250 | 561 |
| | £250.01 to £300 | 294 |
| | £300.01 to £350 | 160 |
| | £350.01 to £400 | 74 |
| | £400.01 and above | 55 |
| Number of children | 0 | 1,311 |
| | 1 | 996 |
| | 2 | 2,999 |
| | 3 | 5,542 |
| | 4 | 6,990 |
| | 5 and above | 9,883 |
| Household type | Single, no child dependant | 1,277 |
| | Single, with child dependant(s) | 16,304 |
| | Couple, no child dependant | 31 |
| | Couple, with child dependant(s) | 10,106 |

Source: DWP IGS Directorate 100% Single Housing Benefit Extract (SHBE)

Notes

0 denotes a nil or negligible number of households.

1. Cells in this table have been randomly adjusted to avoid the release of confidential data. For this reason, individual cells may not sum to totals.

⁴See methodology – Data coverage and reporting month.

Section D. Tables on Benefit Cap off-flows

Table D1 shows households who have (previously) been capped that are no longer subject to the cap as per the latest reporting month. For reporting purposes, as households circumstances are subject to change, the outcome group reflects the latest reason at the point of reporting. A household may be exempt initially due to Working Tax Credit but as time passes move off Working Tax Credit and still remain off the cap.

NOTE: Outcome Group is hierarchically based. There may be a number of reasons why a household is no longer capped, for example moving to a cheaper area in a different LA that also reduces the HB amount, only the top-most reason for which they are eligible is counted.

Table D1 – Households no longer subject to the cap as at March 2014

| Outcome Group | Total, GB | |
|---|--------------|-----|
| Total households no longer capped in March 2014 | 14,530 | |
| 1. Household has an open Working Tax Credit claim. | 5,710 | 39% |
| 2. Household is in receipt of other benefit resulting in exemption (Employment Support Allowance support group / Disability Living Allowance / Industrial Injuries / Personal Independent Payment). | 1,170 | 8% |
| 3. Household no longer claiming housing benefit. | 1,730 | 12% |
| 4. Amount of Housing Benefit claimed has reduced. | 1,800 | 12% |
| 5. Household benefit income below cap level without a change to Housing Benefit amount. | 1,940 | 13% |
| 6. Change in original household structure (i.e. change, addition or loss of a partner). | 190 | 1% |
| 7. Change in recorded Local Authority. | 250 | 2% |
| 8. Other – includes grace period, operational factors / timing, no longer working age | 1,730 | 12% |

Source: DWP IGS Directorate 100% Single Housing Benefit Extract (SHBE), WTC and 100% DWP GMS benefit scans

Notes

0 denotes a nil or negligible number of households.

1. Cells in this table have been rounded to the nearest ten.

2. Outcome group reflects latest hierarchical reason at point of reporting

Table D2- Households (totals) no longer capped by outcome and region

| | Total | Working Tax Credit claim | Other Exemption | Household no longer claiming housing benefit | Reduction in Housing Benefit | Household benefit income below cap level | Change in household structure | Change in recorded Local Authority | Other |
|--------------------------|--------|--------------------------|-----------------|--|------------------------------|--|-------------------------------|------------------------------------|-------|
| Total | 14,530 | 5,710 | 1,170 | 1,730 | 1,800 | 1,940 | 190 | 250 | 1,730 |
| North East | 320 | 100 | 30 | 30 | 30 | 70 | 10 | 0 | 40 |
| North West | 890 | 270 | 120 | 120 | 50 | 170 | 20 | 20 | 120 |
| Yorkshire and The Humber | 660 | 230 | 50 | 90 | 60 | 130 | 10 | 10 | 90 |
| East Midlands | 570 | 210 | 60 | 70 | 40 | 100 | 10 | 10 | 70 |
| West Midlands | 1,250 | 360 | 80 | 150 | 80 | 190 | 30 | 20 | 350 |
| East of England | 950 | 350 | 80 | 110 | 90 | 160 | 10 | 20 | 130 |
| London | 6,650 | 3,170 | 410 | 750 | 940 | 650 | 60 | 110 | 560 |
| South East | 1,530 | 600 | 170 | 160 | 160 | 240 | 20 | 30 | 160 |
| South West | 570 | 220 | 60 | 60 | 40 | 90 | 10 | 10 | 80 |
| Scotland | 730 | 110 | 80 | 150 | 240 | 70 | 0 | 10 | 80 |
| Wales | 420 | 110 | 60 | 50 | 60 | 70 | 10 | 10 | 60 |

Source: DWP IGS Directorate 100% Single Housing Benefit Extract (SHBE), WTC and 100% DWP GMS benefit scans

Notes

1. Cells in this table have been rounded to the nearest ten.

2. Outcome group reflects latest hierarchical reason at point of reporting (Region reflects location when first subject to the cap.)

Table D3- Households (percentages) no longer capped by outcome and region

| | Working Tax Credit claim | Other Exemption | Household no longer claiming housing benefit | Reduction in Housing Benefit | Household benefit income below cap level | Change in household structure | Change in recorded Local Authority | Other | Percentage of capped households no longer capped |
|--------------------------|--------------------------|-----------------|--|------------------------------|--|-------------------------------|------------------------------------|-------|---|
| Total | 39% | 8% | 12% | 12% | 13% | 1% | 2% | 12% | 34% |
| North East | 31% | 9% | 9% | 9% | 22% | 3% | 0% | 13% | 30% |
| North West | 30% | 13% | 13% | 6% | 19% | 2% | 2% | 13% | 30% |
| Yorkshire and The Humber | 35% | 8% | 14% | 9% | 20% | 2% | 2% | 14% | 30% |
| East Midlands | 37% | 11% | 12% | 7% | 18% | 2% | 2% | 12% | 35% |
| West Midlands | 29% | 6% | 12% | 6% | 15% | 2% | 2% | 28% | 40% |
| East of England | 37% | 8% | 12% | 9% | 17% | 1% | 2% | 14% | 35% |
| London | 48% | 6% | 11% | 14% | 10% | 1% | 2% | 8% | 34% |
| South East | 39% | 11% | 10% | 10% | 16% | 1% | 2% | 10% | 36% |
| South West | 39% | 11% | 11% | 7% | 16% | 2% | 2% | 14% | 33% |
| Scotland | 15% | 11% | 21% | 33% | 10% | 0% | 1% | 11% | 43% |
| Wales | 26% | 14% | 12% | 14% | 17% | 2% | 2% | 14% | 34% |

Source: DWP IGS Directorate 100% Single Housing Benefit Extract (SHBE), WTC and 100% DWP GMS benefit scans

Notes

1. Percentages based on rounded data, care should be taken when using percentages based on small counts.
2. Outcome group reflects latest hierarchical reason at point of reporting (Region reflects location when first subject to the cap).
3. Percentage of capped households no longer capped derived from cumulative number of households capped (Page 7).

Table 3.3 shows the cumulative number of households having a spell off the benefit cap by off flow group. Some households may have subsequently moved back on to the cap.

NOTE: Outcome Group is hierarchically based. For those households having multiple spells off the cap, only the top-most one for which they are eligible is counted.

Table D4 – Cumulative household off-flows, May 2013 to March

| Outcome Group | Total, GB | |
|---|--------------|-----|
| Total Off flows (all households with a spell off the cap) | 16,600 | |
| 1. Household has an open Working Tax Credit claim at time of off flow. | 5,760 | 35% |
| 2. Household is in receipt of other benefit resulting in exemption (Employment Support Allowance support group / Disability Living Allowance / Industrial Injuries / Personal Independent Payment). | 1,080 | 7% |
| 3. Household no longer claiming housing benefit. | 2,650 | 16% |
| 4. Amount of Housing Benefit claimed has reduced. | 2,060 | 12% |
| 5. Household benefit income below cap level without a change to Housing Benefit amount. | 2,220 | 13% |
| 6. Change in original household structure (i.e. change, addition or loss of a partner). | 140 | 1% |
| 7. Change in recorded Local Authority. | 230 | 1% |
| 8. Other – includes grace period, operational factors / timing, no longer working age | 2460 | 15% |

Source: DWP IGS Directorate 100% Single Housing Benefit Extract (SHBE), WTC and 100% DWP GMS benefit scans

Notes

0 denotes a nil or negligible number of households.

1. Cells in this table have been rounded to the nearest ten.

2. Outcome Group is hierarchically based. For those households having multiple spells off the cap, only the top-most one for which they are eligible is counted.

Section E. Notes

Annex A: Data collation periods for Benefit cap returns from Local Authorities

| Reporting month | Earliest Local Authority scheduled return | Latest Local Authority scheduled return |
|------------------------|--|--|
| May 2013 | 7 th May 2013 | 30 th May 2013 |
| June 2013 | 3 rd June 2013 | 27 th June 2013 |
| July 2013 | 1 st July 2013 | 25 th July 2013 |
| August 2013 | 29 th July 2013 | 22 nd August 2013 |
| September 2013 | 2 nd September 2013 | 26 th September 2013 |
| October 2013 | 30 th September 2013 | 24 th October 2013 |
| November 2013 | 28 th October 2013 | 21 st November 2013 |
| December 2013 | 18 th November 2013 | 19 th December 2013 |
| January 2014 | 6 th January 2014 | 30 th January 2014 |
| February 2014 | 3 rd February 2014 | 27 th February 2014 |
| March 2014 | 3 rd March 2014 | 27 th March 2014 |

Notes:

1. Local Authorities may extract their Housing Benefit data up to a week ahead of the scheduled return dates. In some circumstances, Local Authorities may return data outside of the scheduled return dates.

Annex B: Benefit cap outcomes, methodology and limitations

The Benefit Cap outcomes show that to January 2014, 39% of previously capped households have found work as indicated by an open Working Tax Credit claim (over 4 thousand households).

Previously published Management Information showed that during the period April 2013 to November 2013, Jobcentre Plus helped around 19,000 individual claimants identified as living in potentially capped households into work. As the new outcomes measure is based on capped households and the MI relates to a cumulative count of potentially capped individuals and there is some overlap between them, the two totals cannot be combined.

The following points should be noted:

- There is no single source of outcome / reason for households to flow off the cap. Latest 100% DWP benefit scans, weekly HMRC tax credit data and SHBE extract are used to determine most appropriate household benefits status.
- An open Working Tax Credit claim is a proxy for movements into work. This is not a comprehensive measure of moves into work; some individuals may go into work but not be eligible to claim Working Tax Credit if their earnings are too high or the hours worked do not meet the claim requirements.
- The results will be subject to retrospection as Working Tax Credit spells are recorded. It is possible that Working Tax Credit claims could be back dated.
- Due to churn in flows on / off cap, the number of off flows (Table 3.1) could fall from 1 month to the next if households move back onto the cap.
- The proportion of off-flows with a Working Tax Credit exemption will change over time.
- Some of the lower category outcomes are not specifically a reason in themselves to come off the cap but are a measurable change in circumstance.

Code of Practice for Official Statistics

In developing Benefit Cap Statistics, DWP has acted in accordance with the Code of Practice and supporting Principles.

DWP policy statements

DWP would like to hear your views on our statistical publications. If you use any of our statistics publications, we would be interested in hearing what you use them for and how well they meet your requirements. Please email DWP at stats-consultation@dwp.gsi.gov.uk. If you would like to receive occasional e-mails from DWP to directly inform you of documents seeking the views of users, please email general.statistics@dwp.gsi.gov.uk giving details of the DWP publications you use.

Other National and Official Statistics issued by the Department for Work and Pensions

Details of other National and Official Statistics produced by the Department for Work and Pensions can be found on the DWP website at the following links:

- A list of Tabulation Tools: <https://www.gov.uk/government/organisations/department-for-work-pensions/series/dwp-statistics-tabulation-tool>;
- A schedule of statistical releases over the next 12 months and a list of the most recent releases: <https://www.gov.uk/government/organisations/department-for-work-pensions/about/statistics> ;
- In accordance with the Code of Practice for Official Statistics, all DWP National Statistics are also announced via the UK Statistics Authority publication hub at: http://www.statistics.gov.uk/hub/statistics-producers/publications/index.html?newquery=*%26source-agency=Work+and+Pensions%26pagetype=release-landing-page

In addition, users can find links to DWP additional statistical analyses that have not been included in our standard publications at <https://www.gov.uk/government/organisations/department-for-work-pensions/series/ad-hoc-statistical-publications-list>

Revisions

The Department's policy statement describes how DWP will handle revisions <https://www.gov.uk/government/publications/policy-statement-on-the-revision-of-dwp-statistics>

Contact points for further information

Press enquiries should be directed to the Department for Work and Pensions press office:

Media Enquiries: 0203 267 5129

Out of hours: 0203 267 5144

Website: <https://www.gov.uk/>

Follow us on Twitter: www.twitter.com/dwppressoffice

Other enquiries about these statistics should be directed to:

Paul McReady (Paul.McReady@dwp.gsi.gov.uk)

DWP Information, Governance & Security Directorate - Client Statistics Division

<https://www.gov.uk/government/organisations/department-for-work-pensions/series/benefit-cap-statistics>

Other National Statistics publications, and general information about the official statistics system of the UK, are available from www.statistics.gov.uk