

Royal Navy and Royal Marines Monthly Personnel Situation Report for October 2014



Ministry of Defence

(Published 13 November 2014)

Statistical Release

Issued by:
Defence Statistics

The statistician responsible for this report is the Defence Statistics (Navy) Head of Branch.

Email:
Defstrat-stat-navy-hd@mod.uk

If you would like to be informed by email of updates to this publication please subscribe via email:
Defstrat-stat-Navy@mod.uk

We welcome feedback, comments and queries on this report. Please contact us on the above email

The Background Quality Report for this publication can be found at:
[Background Quality Report](#)

Links to other publications which may be of interest

[UK Armed Forces Redundancy Programme Statistics](#) This publication contains information on the number of UK Armed Forces personnel either applying or being selected for redundancy in the various tranches. Please note that not all of those who applied were selected and not all of those that were selected had applied for redundancy.

[Royal Navy Quarterly Pocket Brief](#) This quarterly publication contains information on strengths, requirements, intakes and outflows from the Royal Navy service

This publication is a monthly report providing information on the number of Royal Navy and Royal Marine personnel joining and leaving the Regular service. It also shows the strengths of the Regular and Full Time Reserves Service (FTRS) Royal Navy and Royal Marines by rank and Length of Service. This publication is complemented by the [Royal Navy Quarterly Pocket Brief](#) which also shows breakdown of ethnicity in the RN/RM, Army and RAF.

Information about some of the tables used in this report The Royal Marine Aircrew-men are included with XAV; Royal Marine Medical Assistants are included with Medical. Where an RM/RN total split is given they are included with the RM. Royal Marine Officers include Royal Marine pilots. Ratings and Officers whose specialisation has not yet been assigned are covered by 'No Spec' for Officers and 'No Trade' for the Ratings. FTRS are only included in Table 1, unless otherwise stated. Transfer trainees have been removed from the Trained Strength Tables.

Voluntary Outflow (VO) Voluntary Outflow exit rates are calculated using the 12 months total VO divided by the average strength, which is calculated using a 12 month centred rolling average. This centres the data and gets a midpoint month. 13 months of strengths are used, starting mid-way through one month and ending mid-way through the same month a year later. This way the moving average VO rate falls on a specific month rather than being in between months.

Key Points for October 2014

Strengths

- The trained regular strength of the RN/RM including FTRS Regulars was 30,220 giving a deficit of 0.3% against the liability as shown in Table 1a.
- The trained regular strength excluding FTRS regulars was 29,990, a decrease of 50 from the previous month, also shown in Table 1a.
- During the implementation of the Strategic Defence and Security Review 2010 the trained regular strength of the Royal Navy and Royal Marines has reduced from 35,240 in October 2010 to 29,990 in October 2014, shown in table 1c.

Outflows

- The total outflow from the trained regular strength excluding FTRS, was 3,020 in the 12 months to 1 October 2014, made up of 2,600 Ratings and 420 Officers as shown in Tables 9a and 9b.

Royal Navy and Royal Marines Monthly Personnel Situation Report - Contents List

[Summary of NATO Ranks](#)

[Glossary of Terms and Definitions used within this publication](#)

[Revisions](#)

[Data Sources](#)

[Data Issues - Strengths and Weaknesses](#)

[Rounding Policy](#)

[Liability](#)

[Feedback](#)

Current and Historic Trained Strengths

- 1a. Trained strengths and liability
- 1b. Summary of RN/RM strengths by service and arm
- 1c. Graph of historic trained regular trained strengths and liability by Quarter
- 1d. Graph of historic trained regular trained strengths and liability by Month

Trained strengths by Branch, Specialisation and Arm

- 2a. Trained regular Officer strengths and liability by Branch, Specialisation and Arm
- 2b. Trained regular Ratings strengths and liability by Branch, Specialisation and Arm
- 2c. FTRS Officers (regular and non-regular) strengths and liability by Branch, Specialisation and Arm
- 2d. FTRS Ratings (regular and non-regular) strengths and liability by Branch, Specialisation and Arm

Trained regular strengths by branch and paid rank

- 3a. Trained regular Officer strengths and liability
- 3b. Trained regular Ratings strengths and liability
- 3c. Graphs of trained regular Officer surplus/deficit by paid rank
- 3d. Graphs of trained regular Ratings surplus/deficit by paid rank
- 3e. FTRS Officer strengths by branch and paid rank
- 3f. FTRS ratings strengths by branch and paid rank

Trained regular strengths by branch specialisation, arm and paid rank

- 4a. (GS) Trained regular Officer General Service strengths by Branch, Specialisation, Arm and paid rank
- 4a. (SM) Trained regular Officer Submariner strengths by Branch, Specialisation, Arm and paid rank
- 4a. (FAA) Trained regular Officer Fleet Air Arm Branch, Specialisation, Arm and paid rank
- 4b. (GS) Trained regular Ratings General Service strengths by Branch, Specialisation, Arm and paid rank
- 4b. (SM) Trained regular Ratings Submariner strengths by Branch, Specialisation, Arm and paid rank
- 4b. (FAA) Trained regular Ratings Fleet Air Arm strengths by Branch, Specialisation, Arm and paid rank

Untrained regular strengths by branch and Paid Rank

- 5a. Untrained regular Officer strengths by Branch and paid rank
- 5b. Untrained regular Ratings strengths by Branch and paid rank

Trained regular strengths by Top Level Budget (TLB) and paid rank

- 6a. Trained regular strength by TLB and paid rank

Trained regular length of service (LoS)

- 7a. Trained regular length of service by rank
- 7b. Graph of trained regular Officer length of service by paid rank split by RN and RM
- 7c. Graph of regular Ratings and length of service by paid rank split by RN and RM

Trained regular Officer and Rating due outflow over the next 12 months

- This table was removed from the publication in July 2013

Trained regular outflow

- 9a. Trained regular Officer outflow
- 9b. Trained Regular Rating outflow

Trained Regular Voluntary Outflow

- 10a. Trained Regular Officer voluntary outflow exits by paid rank
- 10b. Trained Regular Rating voluntary outflow exits by paid rank

Trained regular promotion to substantive rank

- 11a. Trained regular Officer promotions to substantive rank
- 11b. Trained regular Ratings promotions to substantive rank

Gains to the Trained Strength (GTS)

- 12a. Gains to the Officer trained strength by Branch showing the last 4 full financial years and the last 12 months.
- 12b. Gains to the Ratings trained strength by Branch showing the last 4 full financial years and the last 12 months

Trained Intake from 'Civil Life' or 'Another Service'

- 13a. Trained intake to the regular service showing the last 4 full financial years, the last 12 months and the last month

Summary of NATO Ranks

Officers				
NATO Rank	Royal Navy	Royal Marines	Army	RAF
OF10	Admiral of The Fleet	N/A	Field Marshal	Marshal of the RAF
OF9	Admiral of The Fleet	General	General	Air Chief Marshal
OF8	Vice Admiral	Lieutenant General	Lt – General	Air Marshal
OF7	Rear Admiral	Major General	Major General	Air Vice Marshal
OF6	Commodore	Brigadier	Brigadier	Air Commodore
OF5	Captain	Colonel	Colonel	Group Captain
OF4	Commander	Lt Colonel	Lt Colonel	Wing Commander
OF3	Lieutenant Commander	Major	Major	Squadron Leader
OF2	Lieutenant	Captain	Captain	Flight Lieutenant
OF1	Sub-Lieutenant	Lieutenant / 2 nd Lieutenant	Lieutenant / 2 nd Lieutenant	Flying Officer / Pilot Officer
OFD	Officer Designate	Officer Designate	N/A	N/A

Ratings				
NATO Rank	Royal Navy	Royal Marines	Army	RAF
OR9	Warrant Officer 1	Warrant Officer 1	Warrant Officer 1	Warrant Officer
OR8	Warrant Officer 2	Warrant Officer 2	Warrant Officer 2	N/A
OR7	Chief Petty Officer	Colour Sergeant	Staff Sergeant	Flight Sergeant
OR6	Petty Officer	Sergeant	Sergeant	Sergeant
OR5	N/A	N/A	N/A	N/A
OR4	Leading Rate	Corporal	Corporal	Corporal
OR3	N/A	Lance Corporal	Lance Corporal	N/A
OR2	Able Rate	Marine (1 st Class)	Private	JT/LAC/SAC/AC
OR1*	Ordinary Rate / Junior	Marine (2 nd Class) / Junior	N/A	N/A

* Now obsolete

Glossary of Terms and Specialisations used within this publication

Term	Definition
Officer	An officer is a member of the Armed Forces holding the Queen's Commission to lead and command elements of the forces. Officers form the middle and senior management of the Armed Forces. This includes ranks from Sub-Lt/2nd Lt/Pilot Officer up to Admiral of the Fleet/Field Marshal/Marshal of the Royal Air Force, but excludes Non-Commissioned Officers
Other Ranks / Ratings	Other Ranks are members of the Royal Marines who are not Officers (but Other Ranks do include Non-Commissioned Officers). The equivalent group in the Royal Navy is known as "Ratings".
Ministry of Defence	The Ministry of Defence (MOD) is the United Kingdom government department responsible for the development and implementation of government defence policy and is the headquarters of the British Armed Forces. The principal objective of the MOD is to defend the United Kingdom and its interests. The MOD also manages day to day running of the armed forces, contingency planning and defence procurement.
RNR	Royal Naval Reserve is the Volunteer Reserve element of the Royal Navy. Together with the Royal Marine Reserve they make up the Maritime Reserve .
RMR	Royal Marine Reserve is the Volunteer Reserve element of the Royal Marines. Together with the Royal Naval Reserve they make up the Maritime Reserve .
Maritime Reserve	Is the Volunteer Reserve element of the Naval Service that count towards the Future Reserve 2020 (FR20) programme. They comprise the Royal Naval Reserve and the Royal Marine Reserve and include mobilised and High Readiness Maritime Reserve personnel, plus Maritime Reserve personnel serving on FTRS and ADC contracts. The FR20 Trained Strength target for the Maritime Reserve is 3,100.
FTRS	FTRS (Full-Time Reserve Service) are personnel who fill Service posts for a set period on a full-time basis (this is different from mobilisation) while being a member of one of the Reserve Forces, either as an ex-regular or as a volunteer. An FTRS reservist on: Each Service uses FTRS personnel differently. The Naval Service predominantly uses FTRS to backfill gapped regular posts. However, they do have a small number of FTRS personnel that are not deployable for operations overseas.
FTRS Regular	FTRS Personnel counted against the Regular Liability
FTRS Non Regular	FTRS Personnel not counted against the Regular Liability
Transfer Trainees	Trained Personnel undergoing further training in an alternative discipline
GS	General Service - Surface Fleet
SM	Submarine - Submarines

FAA	Fleet Air Arm – The Royal Navy’s Aviation branch.
XR	Warfare General Service
XSM	Warfare Submarine
XAV	Warfare Aviation and RM Aircrew
EGS	General Service Engineers
ESM	Submarine Engineers
EAE	Aviation Engineers
QARNNS	Queen Alexandra’s Royal Naval Nursing Service – the Nursing branch of the Royal Navy which work alongside the Royal Navy Medical Branch
Strength	Is defined as the number of personnel (for each Service it is partially determined by its requirements)
Trained Strength	Comprises military personnel who have completed Phase 1 and 2 training. Phase 1 training includes all new entry training to provide basic military skills. Phase 2 training includes initial individual specialisation, sub-specialisation and technical training following Phase 1 training prior to joining the trained strength.
Untrained strength	Comprises military personnel who have yet to complete Phase 2 training.

Specialisation	Definition
AEA	Air Engineer Artificer
AEM	Air Engineer Mechanic
AET	Air Engineering Technician
CIS	Communications Information Systems
CISSM	Communications Information Systems Submarine
CMA	Chartered Management Accountant
CT	Communications Technician
Dental Hyg	Dental Hygienist
Dental SA	Dental Surgery Assistant
E(IS SM)	Engineer - Information Systems Submarine
E(IS)	Engineer - Information Systems
E(TM SM)	Engineering Training Manager Submarine
E(TM)	Engineering Training Manager
ET(ME)	Engineering Technician Marine Engineer
ET(MESM)	Engineering Technician Marine Engineer Submarine
ET(WE)	Engineering Technician Weapon Engineer
ET(WESM)	Engineering Technician Weapon Engineer Submarine
ETS	Education Training & Support
HM	Hydrographical Meteorological
HM(H)	HM(Hydrographic) (formally Survey Recorders)
HM(M)	HM(Meteorological) (formally NA(Meteorological))
Med Asst	Medical Assistant
Med Tech	Medical Technician

Specialisation	Definition
MEM	Marine Engineering Mechanic
NA(AC)	Naval Airman Aircraft Controller
NA(AH)	Naval Airman Aircraft Handler
NA(PHOT)	Naval Airman Photographer
NA(SE)	Naval Airman Survival Equipment
PT	Physical Training Instructor
PWO	Principal Warfare Officer
PWO(A)	Principal Warfare Officer (Air)
PWO(C)	Principal Warfare Officer (Communications)
PWO(N)	Principal Warfare Officer (Navigation)
PWO(U)	Principal Warfare Officer (Underwater)
WEM	Weapon Engineering Mechanic
WS	Warfare Specialist
WS(AWT)	Warfare Specialist - Above Water Tactical
WS(AWW)	Warfare Specialist - Above Water Warfare
WS(EW)	Warfare Specialist - Electronic Warfare
WS(SSM)	Warfare Specialist Sensors Submarine
WS(TSM)	Warfare Specialist Tactical Submarine
WS(UW)	Warfare Specialist - Underwater Warfare

Revisions

Defence Statistics has undertaken a major review of all Armed Forces personnel data from the Joint Personnel Administration System (JPA). This has resulted in changes to the strength's, intake and outflow reported in this publication, the periods affected are: FLOWS – from period ending 31 March 2009 to the period ending 31 October 2011, changes to monthly outflow range from fewer than 10 to around 50. STRENGTHS – from 1 May 2009 to 1 November 2011 (inclusive), changes of around 20 per month have been made to the headline strengths. The revised data are considered finalised and are therefore no longer marked provisional. Data for 1 November 2011 and subsequent data are considered final.

The number of trained regular outflows (tables 9a, 9b, 10a and 10b) and promotions (table 11a) for financial years 2010/11, 2011/12 was reported incorrectly in previous situation reports dating from November 2012 to August 2014. Correct figures are reported in September 2014 and subsequent situation reports. No previous publications have been revised. Corrections in September's publication are denoted by 'r'.

Data Sources

Royal Navy/ Royal Marines statistics prior to March 2006 are compiled from pay records held by the Service Personnel and Veterans Agency (SPVA, formerly the Armed Forces Personnel Administration Agency). In March 2006 the transfer of all Regular Service personnel records to the Joint Personnel Administration (JPA) system began. Statistics are compiled from JPA for the Royal Navy/ Royal Marines from November 2006.

Rounding Policy

All totals are rounded in accordance with the Defence Statistics rounding policy; therefore totals may not equal the sum of their parts. All numbers are rounded to the nearest 10 with numbers ending in 5 rounded to the nearest multiple of 20 to avoid bias. Numbers that would be rounded to 0 are represented by '~'.

Liability

Liability is also known as requirement. The liability used in this publication, dated July 2014, is taken from the Planning Liability PL 2-14, scaled to DP14. Liability for the Royal Navy / Royal Marines for 2013-14 have been reviewed and revised (see table 1a). This revision was due to an update made to the Royal Navy / Royal Marines liability between August 2013

and June 2014. Corresponding revisions have also been made in the Quarterly Personnel Report and Monthly Personnel Report. No previously published publications have been revised.

Feedback

At Defence Statistics we welcome feedback on our statistical products, if you have any comments or questions about this publication or about the statistics produced by Defence Statistic in general, please contact us as follows:

Contact: **Defence Statistics**

Email: DefStrat-Stat-Navy@mod.uk

Visit our website: www.gov.uk/organisations/ministry-of-defence/about/statistics

1a

Royal Navy and Royal Marines Trained Strengths and Liability

	Apr-10	Apr-11	Apr-12	Apr-13
RN/RM Regulars	35,180	35,250	33,190	31,280
FTRS "Regulars" *	330	180	100	150
FTRS "Non-Regulars" **	250	250	260	250

	Apr-14	May-14	Jun-14	Jul-14	Aug-14	Sep-14	Oct-14
	30,310	30,150	30,100	30,180	30,210	30,040	29,990
	200	210	210	230	220	220	230
	300	310	310	310	320	330	330

Total	RN/RM Strength	35,500	35,420	33,290	31,420
	Royal Navy	28,120	27,860	25,970	24,430
	Royal Marines	7,060	7,380	7,220	6,850
	FTRS "Regulars" *	330	180	100	150
	Liability	35,790	35,700	34,800	30,530
	Regular Surplus/Deficit	-620	-450	-1,610	750
	Regular Surplus/Deficit (%)	-1.7%	-1.3%	-4.6%	2.4%
	Total Surplus/Deficit	-290	-280	-1,510	890
	Total Surplus/Deficit (%)	-0.8%	-0.8%	-4.3%	2.9%

	30,510	30,350	30,320	30,410	30,440	30,270	30,220
	23,260	23,140	23,100	23,150	23,140	23,020	22,960
	7,050	7,000	7,000	7,030	7,080	7,020	7,030
	200	210	210	230	220	220	230
	30,340	30,340	30,340	30,330	30,330	30,320	30,310
	-40	-190	-230	-150	-110	-270	-320
	-0.1%	-0.6%	-0.8%	-0.5%	-0.4%	-0.9%	-1.1%
	160	10	-20	80	110	-50	-90
	0.5%	0.0%	-0.1%	0.3%	0.4%	-0.2%	-0.3%

Officers	6,660	6,620	6,410	6,240
Royal Navy (inc Careers)	5,730	5,720	5,560	5,400
RM GS (inc Careers)	770	790	780	750
RM Band	10	10	10	10
Transfer Trainees	20	30	20	10
FTRS "Regulars" *	120	80	40	60
Liability	6,630	6,610	6,500	5,810
Surplus/Deficit	30	10	-90	420
Surplus/Deficit (%)	0.4%	0.1%	-1.4%	7.3%

	6,100	6,060	6,080	6,090	6,060	6,030	6,020
	5,250	5,220	5,250	5,250	5,230	5,200	5,200
	750	740	740	730	730	730	720
	10	10	10	10	10	10	10
	10	10	10	10	10	10	10
	80	80	80	80	80	80	80
	5,850	5,860	5,950	5,950	5,940	5,940	5,940
	240	200	130	140	120	90	90
	4.1%	3.4%	2.2%	2.4%	2.0%	1.5%	1.5%

Ratings	28,850	28,800	26,880	25,190
XR	5,680	5,530	5,140	4,720
XSM	880	860	830	790
XAV	790	820	790	730
Eng GS	5,240	5,100	4,490	4,100
Eng SM	2,140	2,150	2,130	2,060
Air Eng	3,460	3,530	3,260	3,110
Logistics **	3,230	3,180	2,880	2,680
Medical	1,000	980	950	920
RM GS	5,840	6,130	5,960	5,630
RM Band	320	330	340	340
FTRS "Regulars" *	200	100	60	90
Unknown	-	-	-	-
Transfer Trainees	60	80	50	30
Liability	29,160	29,090	28,300	24,720
Surplus/Deficit	-320	-290	-1,420	470
Surplus/Deficit (%)	-1.1%	-1.0%	-5.0%	1.9%

	24,410	24,300	24,240	24,320	24,380	24,240	24,200
	4,480	4,450	4,440	4,430	4,450	4,430	4,420
	760	770	760	770	780	770	770
	690	700	700	720	710	710	700
	3,740	3,690	3,690	3,670	3,680	3,660	3,640
	1,970	1,970	1,940	1,980	1,950	1,930	1,940
	3,030	3,010	3,010	3,000	3,000	2,990	2,980
	2,630	2,630	2,600	2,600	2,610	2,600	2,600
	900	890	900	910	910	910	910
	5,720	5,690	5,690	5,720	5,780	5,740	5,720
	340	340	340	340	340	330	350
	120	130	130	150	140	140	140
	-	-	-	-	-	-	-
	30	30	30	30	30	30	30
	24,490	24,480	24,390	24,380	24,380	24,380	24,380
	-80	-190	-150	-70	-10	-140	-180
	-0.3%	-0.8%	-0.6%	-0.3%	0.0%	-0.6%	-0.7%

Oct-14 Edition.

From Jan 10 and elsewhere in this document, Liability split by Officer/Rating, Branch & Spec is taken from the relevant Planning Liability (currently PL 2-14) scaled to DP. Monthly liability figures are calculated using a straight line interpolation between the relevant PL April points (currently April 13 and April 14).

* In this table only, the FTRS Strength has been split into those that are counted against the Regular Liability (FTRS "Regulars"), and those that are not (FTRS "Non-Regulars").

** Previous publications have incorrectly reported a count of 2510 logistic ratings and a count of 24300 ratings as a total for April 2014.

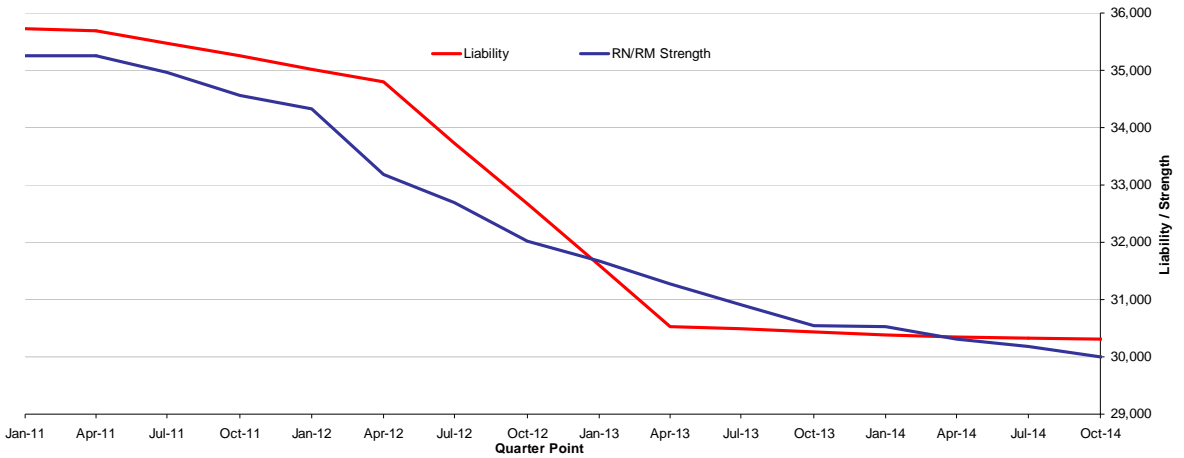
This has since been corrected to 2630 for logistic ratings and 24410 for ratings as a total.

1b Summary of Royal Navy and Royal Marines Strength by Service and Arm

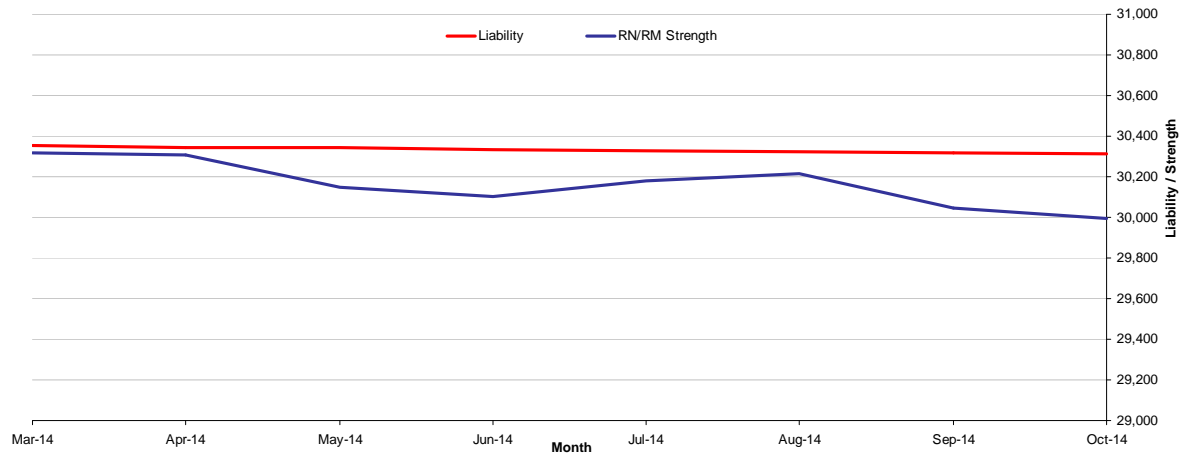
Total	30,220		
Royal Navy	23,160		
Royal Marines	7,060		
Officers Ratings			
Total	6,020	24,200	
Royal Navy	5,280	17,880	
Royal Marines	740	6,320	
GS SM FAA			
Total	21,070	4,110	5,040
Royal Navy	14,090	4,110	4,960
Royal Marines	6,970	-	90

The strength shown is the total trained Regular and FTRS Regular Personnel
RN/RM figures are the Royal Navy and Royal Marines combined

1c Historic Trained Regular Royal Navy and Royal Marines Strengths and Liability by Quarter



1d Recent Trained Regular Royal Navy and Royal Marines Strengths and Liability by Month



2a

Trained Regular Royal Navy and Royal Marine Officer Strengths* and Liability** by Branch, Specialisation and Arm

Branch	Specialisation	GS	SM	FAA	Total	Liability	Surplus/Deficit
Total		3,820	880	1,230	5,930	5,940	-10
Warfare		1,350	310	910	2,580	2,570	10
	Air Traffic Control	-	-	80	80		
	Aviation	-	-	40	40		
	Communicators	20	-	-	20		
	Intelligence Officer	120	-	-	120		
	Fighter Controller	40	-	-	40		
	General Service Warfare	330	-	-	330		
	HM	170	-	-	170		
	Mine Clearance Diver	70	-	-	70		
	Mine Warfare	20	-	-	20		
	Observer	-	-	320	320		
	Pilot	-	-	470	470		
	PWO	180	-	-	180		
	PWO(A)	160	-	-	160		
	PWO(C)	60	-	-	60		
	PWO(N)	70	-	-	70		
	PWO(U)	90	-	-	90		
	RN Police	20	-	-	20		
	Submariner	-	310	-	310		
	Unspecified	-	-	-	-		
Engineer		860	460	280	1,600	1,640	-30
	Air Engineer	-	-	280	280		
	E(IS)	50	-	-	50		
	E(IS SM)	-	~	-	~		
	E(TM)	190	-	-	190		
	E(TM SM)	-	20	-	20		
	Marine Engineer	260	-	-	260		
	Marine Engineer (SM)	-	240	-	240		
	Weapons Engineer	360	-	-	360		
	Weapons Engineer (SM)	-	200	-	200		
	Unspecified	-	-	-	-		
Logistics		420	100	-	520	490	30
	Barrister	40	~	-	40		
	CMA	20	~	-	20		
	Logistics	360	100	-	460		
	Logistics Family Services	~	-	-	~		
Medical		260	-	-	260	230	30
Medical Services		60	-	-	60	60	~
Dental Services		50	-	-	50	60	-10
QARNNS		70	-	-	70	100	-30
Chaplain		60	-	-	60	60	~
Royal Marines		690	-	40	730	730	10
	Band Service	10	-	-	10		
	General Service	680	-	-	680		
	Pilot	-	-	40	40		

* The Trained Strength shown in this table does not include the Transfer Trainee Strength, hence the slightly lower figures.

** Smoothed Planning Liability 2-14 has been used and scaled to the interpolated monthly DP14 total figure.

2b

Trained Regular Royal Navy and Royal Marines Rating Strengths* and Liability** by Branch, Specialisation and Arm

Branch	Specialisation	GS	SM	FAA	Total	Liability	Surplus/Deficit
Total		16,950	3,190	3,780	23,920	24,380	-460
XR		4,320	-	100	4,420	4,680	-260
	WS	390	-	-	390	-	-
	WS(AWT)	340	-	-	340	-	-
	WS(AWW)	320	-	-	320	-	-
	WS(UW)	240	-	-	240	-	-
	WS(EW)	350	-	-	350	-	-
	CIS	710	-	-	710	-	-
	HM	10	-	-	10	-	-
	HM(H)	90	-	-	90	-	-
	HM(M)	-	-	100	100	-	-
	Mine Warfare	310	-	-	310	-	-
	Diver	340	-	-	340	-	-
	Seaman Specialist	590	-	-	590	-	-
	Weapons Analyst	-	-	-	-	-	-
	PT	190	-	-	190	-	-
	RN Police	220	-	-	220	-	-
	CT	230	-	-	230	-	-
XSM		-	770	-	770	760	-
	Coxswain (SM)	-	30	-	30	-	-
	WS(SSM)	-	310	-	310	-	-
	WS(TSM)	-	210	-	210	-	-
	CISSM	-	210	-	210	-	-
XAV		-	-	700	700	750	-50
	Aircrewman	-	-	100	100	-	-
	NA(AC)	-	-	110	110	-	-
	NA(AH)	-	-	400	400	-	-
	NA(PHOT)	-	-	50	50	-	-
	RM Aircrewman	-	-	40	40	-	-
Engineer General Service		3,640	-	-	3,640	3,930	-290
	MEM	130	-	-	130	-	-
	WEM	40	-	-	40	-	-
	ET(ME)	2,060	-	-	2,060	-	-
	ET(WE)	1,400	-	-	1,400	-	-
	ETS	-	-	-	-	-	-
Engineer Submariner		-	1,940	-	1,940	2,010	-70
	ET(MESM)	-	1,130	-	1,130	-	-
	ET(WESM)	-	790	-	790	-	-
	MEM	-	20	-	20	-	-
	WEM	-	-	-	-	-	-
Air Engineer		-	-	2,980	2,980	2,860	130
	AEA	-	-	80	80	-	-
	AEM	-	-	110	110	-	-
	AET	-	-	2,660	2,660	-	-
	NA(SE)	-	-	140	140	-	-
Logistics		2,090	400	-	2,490	2,570	-80
	Caterer	120	20	-	140	-	-
	Chef	490	140	-	630	-	-
	Family Service	30	-	-	30	-	-
	Steward	310	80	-	380	-	-
	Supply Chain	480	100	-	570	-	-
	Writer	660	80	-	740	-	-
	RM Chef	-	-	-	-	-	-
Medical		830	80	-	910	960	-50
	Dental Hyg	10	-	-	10	-	-
	Dental SA	80	-	-	80	-	-
	Med Assist	470	80	-	550	-	-
	Med Tech	40	-	-	40	-	-
	Naval Nurse	160	-	-	160	-	-
	RM Med Assist	60	-	-	60	-	-
Marines (excl MA & Acmn)		6,080	-	-	6,080	5,860	220
	Band	280	-	-	280	-	-
	Bugler	70	-	-	70	-	-
	General Service	5,720	-	-	5,720	-	-

* The Trained Strength shown in this table does not include the Transfer Trainee Strength, hence the slightly lower figures.

** Smoothed Planning Liability 2-14 has been used and scaled to the interpolated monthly DP14 total figure.

**2c Royal Navy and Royal Marines FTRS Officer
(Regular and Non-Regular) Strengths by
Branch, Specialisation and Arm**

Branch	Specialisation	GS	SM	FAA	Total
Total		130	10	20	160
Warfare		40	10	20	70
	Air Traffic Control	-	-	~	~
	Aviation	-	-	~	~
	Communications	~	-	-	~
	Intelligence Officer	-	-	-	-
	Fighter Controller	-	-	-	-
	General Service Warfare	10	-	-	10
	HM	~	-	-	~
	Mine Clearance Diver	~	-	-	~
	Mine Warfare	10	-	-	10
	Observer	-	-	~	~
	Pilot	-	-	~	~
	PWO	~	-	-	~
	PWO(A)	10	-	-	10
	PWO(C)	~	-	-	~
	PWO(N)	~	-	-	~
	PWO(U)	10	-	-	10
	RN Police	-	-	-	-
	Submariner	-	10	-	10
	Unspecified	~	~	-	~
Engineer		10	~	~	20
	Air Engineer	-	-	~	~
	E(IS)	~	-	-	~
	E(IS SM)	-	-	-	-
	E(TM)	~	-	-	~
	E(TM SM)	-	-	-	-
	Marine Engineer	~	-	-	~
	Marine Engineer (SM)	-	~	-	~
	Weapons Engineer	~	-	-	~
	Weapons Engineer (SM)	-	~	-	~
	Unspecified	-	-	-	-
Logistics		20	-	-	20
	Barrister	-	-	-	-
	CMA	-	-	-	-
	Logistics	20	-	-	20
	Logistics Family Services	-	-	-	-
Medical		-	-	-	-
Medical Services		-	-	-	-
Dental Services		-	-	-	-
QARNNS		~	-	-	~
Chaplain		~	-	-	~
Careers		~	-	-	~
Royal Marines		10	-	-	10
	Band Service	-	-	-	-
	General Service	10	-	-	10
	Pilot	-	-	-	-
RNR		40	-	-	40
RMR		-	-	-	-

**2d Royal Navy and Royal Marines FTRS Rating
(Regular and Non-Regular) Strengths by
Branch, Specialisation and Arm**

Branch	Specialisation	GS	SM	FAA	Total
Total		340	40	10	400
XR		90	-	~	90
	WS	-	-	-	-
	WS(AWT)	10	-	-	10
	WS(AWW)	10	-	-	10
	WS(UW)	~	-	-	~
	WS(EW)	~	-	-	~
	CIS	20	-	-	20
	HM	-	-	-	-
	HM(H)	-	-	-	-
	HM(M)	-	-	~	~
	Mine Warfare	~	-	-	~
	Diver	~	-	-	~
	Seaman Specialist	30	-	-	30
	Weapons Analyst	-	-	-	-
	PT	10	-	-	10
	RN Police	10	-	-	10
	CT	~	-	-	~
	Unspecified	-	-	-	-
XSM		-	10	-	10
	Coxswain (SM)	-	~	-	~
	WS(SSM)	-	~	-	~
	WS(TSM)	-	~	-	~
	CISSM	-	~	-	~
XAV		-	-	~	~
	Aircrewman	-	-	-	-
	NA(AC)	-	-	~	~
	NA(AH)	-	-	~	~
	NA(PHOT)	-	-	~	~
	RM Aircrewman	-	-	-	-
	Unspecified	-	-	-	-
Engineer General Service		20	-	-	20
	MEM	10	-	-	10
	WEM	10	-	-	10
	ET(ME)	10	-	-	10
	ET(WE)	~	-	-	~
	ETS	-	-	-	-
	Unspecified	-	-	-	-
Engineer Submariner		-	40	-	40
	ET(MESM)	-	20	-	20
	ET(WESM)	-	10	-	10
	MEM	-	-	-	-
	WEM	-	-	-	-
Air Engineer		-	-	10	10
	AEA	-	-	~	~
	AEM	-	-	~	~
	AET	-	-	~	~
	NA(SE)	-	-	~	~
Logistics		20	~	-	20
	Caterer	10	-	-	10
	Chef	-	-	-	-
	Family Service	-	-	-	-
	Steward	-	-	-	-
	Supply Chain	10	-	-	10
	Writer	10	~	-	10
	Unspecified	-	-	-	-
Medical		-	-	-	-
	Dental Hyg	-	-	-	-
	Dental SA	-	-	-	-
	Med Assist	-	-	-	-
	Naval Nurse	-	-	-	-
	RM Med Assist	-	-	-	-
	Med Tech	-	-	-	-
	Unspecified	-	-	-	-
Marines (excl MA & Acmn)		40	-	-	40
	Band	-	-	-	-
	Bugler	-	-	-	-
	General Service	40	-	-	40
RNR		~	-	-	~
RMR		-	-	-	-
Careers		160	-	-	160

3a

Trained* Regular Royal Navy and Royal Marine Officer Strengths and Liability
by Branch and Paid Rank*****

Branch		OF7 and above	OF-6	OF-5	OF-4	OF-3	OF-2	OF-1	Total
Total	Strength	40	80	270	1,040	1,930	2,450	120	5,930
	Liability	30	70	250	1,010	1,990	2,570	-	5,940
	Surplus / Deficit	10	10	20	20	-60	-120	120	-10
Warfare	Strength	20	30	110	370	830	1,170	50	2,580
	Liability	20	30	100	360	870	1,180	-	2,570
	Surplus / Deficit	10	~	10	~	-40	-10	50	10
	% Surplus / Deficit	30.2%	-14.1%	6.9%	1.1%	-5.1%	-1.1%	-	0.2%
Engineer	Strength	10	20	80	290	540	660	10	1,600
	Liability	10	20	80	270	560	690	-	1,640
	Surplus / Deficit	~	~	~	20	-30	-30	10	-30
	% Surplus / Deficit	-40.8%	-7.2%	6.1%	6.4%	-4.5%	-4.5%	-	-2.0%
Logistics	Strength	~	10	20	90	160	210	30	520
	Liability	-	10	20	100	170	210	-	490
	Surplus / Deficit	~	~	~	~	-10	~	30	30
	% Surplus / Deficit	-	79.4%	10.5%	-2.1%	-4.9%	0.0%	-	5.5%
Medical	Strength	~	~	20	80	110	50	-	260
	Liability	-	~	10	80	90	40	-	230
	Surplus / Deficit	~	~	10	~	20	10	-	30
	% Surplus / Deficit	-	36.3%	64.4%	-1.9%	22.1%	13.7%	-	15.1%
Dental	Strength	-	-	~	20	30	10	-	50
	Liability	-	-	~	20	20	20	-	60
	Surplus / Deficit	-	-	~	~	~	-10	-	-10
	% Surplus / Deficit	-	-	44.4%	-17.1%	7.2%	-67.2%	-	-18.9%
Medical Services	Strength	-	-	~	10	20	20	~	60
	Liability	-	-	~	10	20	30	-	60
	Surplus / Deficit	-	-	~	~	~	-10	~	~
	% Surplus / Deficit	-	-	-32.6%	35.3%	-5.2%	-24.6%	-	-7.6%
QARNNS	Strength	-	-	~	10	20	30	~	70
	Liability	-	-	~	10	40	50	-	100
	Surplus / Deficit	-	-	~	~	-10	-20	~	-30
	% Surplus / Deficit	-	-	1.1%	-6.6%	-30.3%	-45.5%	-	-30.9%
Chaplain	Strength	~	~	-	50	-	-	-	60
	Liability	~	~	~	60	-	-	-	60
	Surplus / Deficit	~	~	~	~	-	-	-	~
	% Surplus / Deficit	1.1%	-	-100.0%	-2.6%	-	-	-	-0.7%
RM General Service	Strength	~	10	30	120	230	300	20	720
	Liability	~	10	30	110	220	340	-	720
	Surplus / Deficit	see note 1	~	~	10	10	-40	20	10
	% Surplus / Deficit	see note 1	60.9%	-7.5%	8.1%	4.1%	-12.1%	-	0.9%
RM Band	Strength	-	-	-	~	~	~	~	10
	Liability	-	-	-	~	~	~	-	10
	Surplus / Deficit	-	-	-	~	~	~	~	~
	% Surplus / Deficit	-	-	-	2.7%	3.3%	3.2%	-	13.5%
Careers/Other	Strength	-	-	-	-	-	-	-	-
	Liability	-	-	-	-	-	-	-	-
	Surplus / Deficit	-	-	-	-	-	-	-	-
	% Surplus / Deficit	-	-	-	-	-	-	-	-
Unspecified	Strength	-	-	-	-	-	-	-	-
	Liability	-	-	-	-	-	-	-	-

Oct-14 Edition.

* The Trained Strength shown in this table does not include the Transfer Trainee Strength, hence the slightly lower figures.

** Smoothed Planning Liability 2-14 has been used and scaled to the interpolated monthly DP14 total figure.

*** Figures exclude FTRS personnel in regular posts.

¹ At OF7+ RM GS Officers are assigned under the same regime as their RN counterparts, occupying common appointments where liability is attributable across the RN/RM OF7+ population.

3b Trained* Regular Royal Navy and Royal Marines Rating Strengths and Liability
by Branch and Paid Rank*****

Branch		OR-9	OR-8 ³	OR-7	OR-6	OR-4	OR-3	OR-2	Total
Total	Strength	790	510	2,960	3,620	5,660	630	9,770	23,920
	Liability	920	230	3,150	4,340	6,000	see note 2	9,740	24,380
	Surplus / Deficit	-130	280	-200	-720	-350	630	30	-460
XR	Strength	150	~	580	760	1,160	-	1,770	4,420
	Liability	140	-	550	880	1,330	-	1,780	4,680
	Surplus / Deficit	10	~	20	-120	-170	-	-10	-260
	% Surplus / Deficit	5.2%	-	4.5%	-13.5%	-12.6%	-	-0.7%	-5.6%
XSM	Strength	30	-	100	110	170	-	360	770
	Liability	30	-	100	120	170	-	340	760
	Surplus / Deficit	~	-	~	-10	-10	-	20	~
	% Surplus / Deficit	2.7%	-	-2.1%	-8.6%	-3.2%	-	5.9%	0.4%
XAV	Strength	30	-	80	150	200	-	240	700
	Liability	30	-	90	180	250	-	190	750
	Surplus / Deficit	~	-	-10	-40	-50	-	50	-50
	% Surplus / Deficit	-0.3%	-	-14.8%	-20.5%	-20.6%	-	28.1%	-6.7%
EGS	Strength	250	80	650	570	760	-	1,320	3,640
	Liability	310	-	720	920	830	-	1,150	3,930
	Surplus / Deficit	-60	80	-70	-350	-70	-	170	-290
	% Surplus / Deficit	-19.8%	-	-9.2%	-38.1%	-8.1%	-	14.5%	-7.5%
ESM	Strength	70	150	390	230	410	-	690	1,940
	Liability	150	-	530	370	410	-	550	2,010
	Surplus / Deficit	-80	150	-140	-130	~	-	140	-70
	% Surplus / Deficit	-51.8%	-	-27.2%	-36.5%	-0.7%	-	26.4%	-3.3%
EAE	Strength	80	40	420	630	810	-	1,010	2,980
	Liability	90	-	460	610	730	-	970	2,860
	Surplus / Deficit	-10	40	-40	30	80	-	40	130
	% Surplus / Deficit	-14.8%	-	-8.1%	4.3%	10.9%	-	3.8%	4.4%
LOGS	Strength	60	-	220	390	730	-	1,090	2,490
	Liability	60	-	220	420	770	-	1,110	2,570
	Surplus / Deficit	~	-	~	-20	-40	-	-30	-80
	% Surplus / Deficit	7.0%	-	0.6%	-5.8%	-4.7%	-	-2.3%	-3.1%
MED	Strength	30	~	120	170	290	~	300	910
	Liability	30	-	110	200	320	-	300	960
	Surplus / Deficit	~	~	~	-30	-30	~	~	-50
	% Surplus / Deficit	-9.2%	-	4.4%	-15.6%	-10.4%	-	0.7%	-5.6%
RM GS	<i>Excludes RM Med Assistant, RM Aircrewman, RM Band and RM Careers Service and RM Chefs</i>								
	Strength	80	220	370	560	1,060	620	2,800	5,720
	Liability	70	220	350	590	1,130	see note 2	3,170	5,520
	Surplus / Deficit	10	10	30	-30	-70	620	-370	210
	% Surplus / Deficit	16.2%	3.3%	7.9%	-4.8%	-6.0%	-	-11.5%	3.7%
RM Band	Strength	~	10	30	40	60	-	200	350
	Liability	~	10	30	50	60	-	190	340
	Surplus / Deficit	~	~	10	-10	~	-	10	10
	% Surplus / Deficit	2.1%	22.8%	22.8%	-15.8%	7.1%	-	4.9%	3.8%
Unspecified	Strength	-	-	-	-	-	-	-	-
CAPPS	Liability	-	-	-	-	-	-	-	-

Oct-14 Edition.

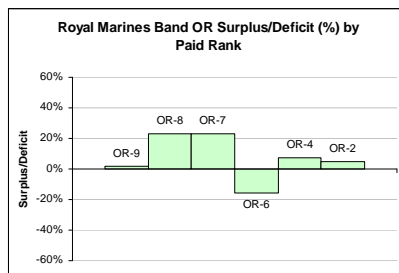
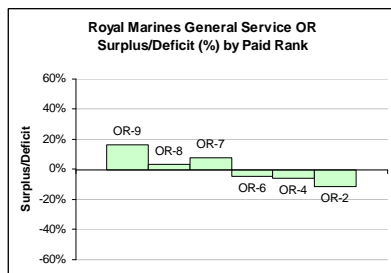
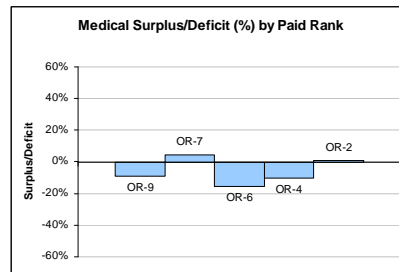
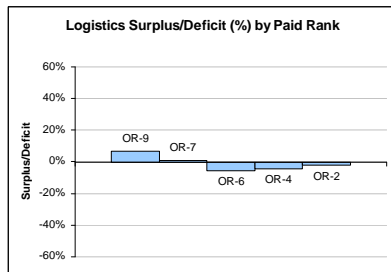
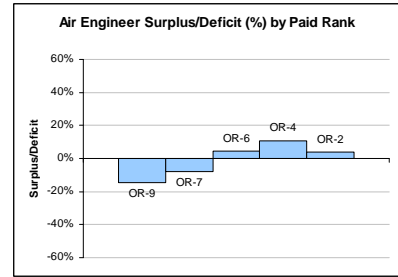
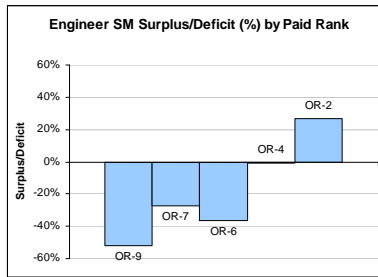
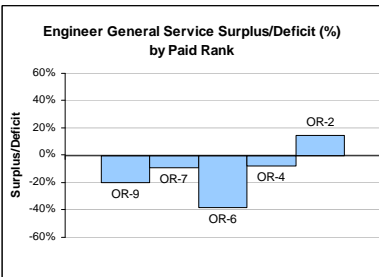
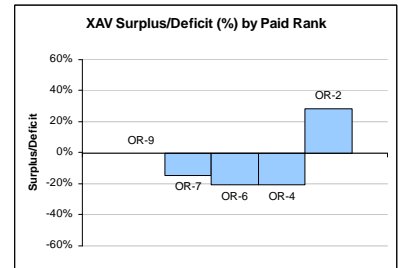
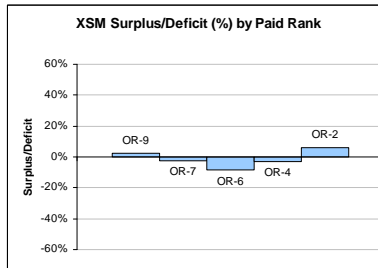
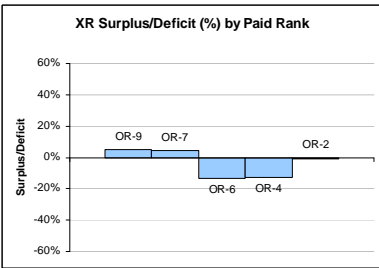
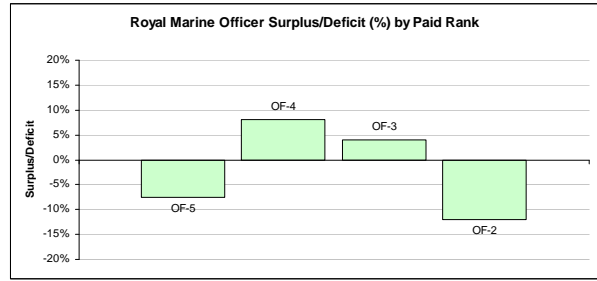
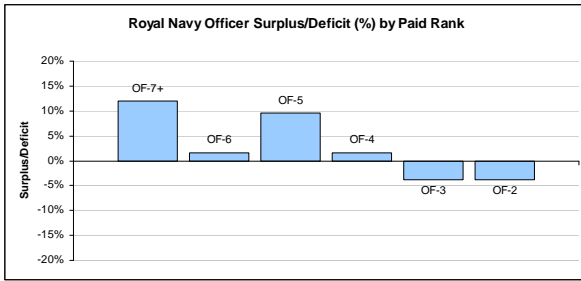
* The Trained Strength shown in this table does not include the Transfer Trainee Strength, hence the slightly lower figures.

** Smoothed Planning Liability 2-14 has been used and scaled to the interpolated monthly DP14 total figure.

*** Figures exclude FTRS personnel in regular posts.

² Royal Marines are the only part of the RN/RM Service to currently contain OR3 strength. As no separate liability for OR3 is produced for the RN/RM, the liability for OR2 also includes OR3.

³ The latest liability (PL2-14) no longer includes RN OR8. This rank will still be reflected in RN strength.



3e Royal Navy and Royal Marine Officer FTRS (Regular and Non-Regular) Strength by Branch and Paid Rank								
Branch	OF7+	OF6	OF5	OF4	OF3	OF2	OF1	Total
Total	-	-	-	50	80	20	-	160
Warfare	-	-	-	20	40	-	-	70
Engineer	-	-	-	-	-	-	-	20
Logistics	-	-	-	10	10	-	-	20
Medical	-	-	-	-	-	-	-	-
Medical Services	-	-	-	-	-	-	-	-
Dental	-	-	-	-	-	-	-	-
QARNNS	-	-	-	-	-	-	-	-
Chaplain	-	-	-	-	-	-	-	-
RM General Service	-	-	-	-	10	-	-	10
RM Band	-	-	-	-	-	-	-	-
RNR	-	-	-	10	20	10	-	40
RMR	-	-	-	-	-	-	-	-
Careers/Other	-	-	-	-	-	-	-	-

Oct-14 Edition.

3f Royal Navy and Royal Marine Rating FTRS (Regular and Non-Regular) Strength by Branch and Paid Rank								
Branch	OR9	OR8	OR7	OR6	OR4	OR3	OR2	Total
Total	50	20	150	140	10	-	20	400
XR	10	-	30	30	10	-	10	90
XSM	-	-	-	-	-	-	-	10
XAV	-	-	-	-	-	-	-	10
EGS	-	-	20	-	-	-	-	20
ESM	-	10	20	10	-	-	-	40
EAE	-	-	-	-	-	-	-	10
LOGS	-	-	10	10	-	-	-	20
MED	-	-	-	-	-	-	-	-
RM GS	-	-	10	10	-	-	10	40
<i>Excludes RM Med Assistant, RM Aircrewman, RM Band and RM Careers Service</i>								
RM Band	-	-	-	-	-	-	-	-
RNR	-	-	-	-	-	-	-	-
RMR	-	-	-	-	-	-	-	-
Career	30	-	50	80	-	-	-	160
Unspecified	-	-	-	-	-	-	-	-

Oct-14 Edition.

4a (GS)

**Trained* Regular Royal Navy and Royal Marine Officer General Service
Strengths by Branch and Specialisation and Paid Rank**

Branch	Specialisation	OF-7 and above	OF-6	OF-5	OF-4	OF-3	OF-2	OF-1	Total
Total		30	50	170	690	1,270	1,510	110	3,820
Warfare		10	10	60	190	440	600	40	1,350
	Communications	-	-	-	~	10	10	~	20
	Intelligence Officer	-	-	-	~	50	60	~	120
	Fighter Controller	-	-	-	-	10	30	~	40
	General Service Warfare	-	-	-	-	20	280	30	330
	HM	-	-	~	30	50	90	~	170
	Mine Clearance Diver	-	-	-	-	30	40	-	70
	Mine Warfare	-	-	-	-	~	10	-	20
	PWO	-	~	~	20	110	40	-	180
	PWO(A)	~	~	20	70	60	~	-	160
	PWO(C)	~	~	~	20	30	~	-	60
	PWO(N)	~	~	~	20	30	10	-	70
	PWO(U)	~	~	10	40	30	-	-	90
	RN Police	-	-	-	~	10	10	~	20
	Unspecified	-	-	-	-	-	-	-	-
Engineer		~	10	40	150	300	350	10	860
	E(IS)	-	-	~	10	20	20	-	50
	E(TM)	-	~	~	20	70	90	~	190
	Marine Engineer	~	~	10	50	100	90	-	260
	Weapons Engineer	-	~	20	60	110	150	~	360
	Unspecified	-	-	-	-	-	-	-	-
Logistics		~	10	20	70	130	160	30	420
	Barrister	~	~	~	10	10	10	-	40
	CMA	-	-	~	10	10	-	-	20
	Logistics	-	~	10	50	110	160	30	360
	Logistics Family Services	-	-	-	-	~	~	-	~
Medical		~	~	20	80	110	50	-	260
Medical Services		-	-	~	10	20	20	~	60
Dental Services		-	-	~	20	30	10	-	50
QARNNS		-	-	~	10	20	30	~	70
Chaplain		~	~	-	50	-	-	-	60
Other		-	-	-	-	-	-	-	-
Royal Marines		~	10	30	120	210	290	20	690
	Band Service	-	-	-	~	~	~	~	10
	General Service	~	10	30	110	210	290	20	680

* The Trained Strength shown in this table does not include the Transfer Trainee Strength, hence the slightly lower figures.

Oct-14 Edition.

**Trained* Regular Royal Navy and Royal Marines Officer Submarine Strengths
4a (SM) by Branch and Specialisation and Paid Rank**

Branch	Specialisation	OF-7 and above	OF-6	OF-5	OF-4	OF-3	OF-2	OF-1	Total
Total		10	20	50	160	240	380	10	870
Warfare		~	10	20	50	80	140	10	310
	Submariner	~	10	20	50	80	140	10	310
Engineer		~	10	30	90	140	200	~	460
	E(IS SM)	-	-	-	-	~	~	-	~
	E(TM SM)	-	-	~	10	~	10	~	20
	Marine Engineer (SM)	~	~	10	40	70	110	-	240
	Weapons Engineer (SM)	~	~	10	40	60	80	~	200
	Unspecified	-	-	-	-	-	-	-	-
Logistics		-	~	~	30	30	40	-	100
	Barrister	-	-	-	~	~	~	-	~
	CMA	-	-	-	~	~	-	-	~
	Logistics	-	~	~	20	20	40	-	90
	Logistics Family Services	-	-	-	-	-	-	-	-
Other		-	-	-	-	-	-	-	-

* The Trained Strength shown in this table does not include the Transfer Trainee Strength, hence the slightly lower figures.

**Trained* Regular Royal Navy and Royal Marine Officer Fleet Air Arm Strengths
4a (FAA) by Branch and Specialisation and Paid Rank**

Branch	Specialisation	OF-7 and above	OF-6	OF-5	OF-4	OF-3	OF-2	OF-1	Total
Total		10	10	40	190	420	560	~	1,230
Warfare		10	10	30	130	310	430	~	910
	Air Traffic Control	-	-	~	~	20	50	~	80
	Aviation	-	-	-	~	10	20	~	40
	Observer	~	~	10	70	110	130	~	320
	Pilot	~	10	20	50	160	230	-	470
	Unspecified	-	-	-	-	-	-	-	-
Engineer		-	~	10	50	90	120	-	280
	Air Engineer	-	~	10	50	90	120	-	280
Other		-	-	-	-	-	-	-	-
Royal Marines		-	-	~	10	20	20	-	40
General Service Pilot		-	-	~	10	20	20	-	40

* The Trained Strength shown in this table does not include the Transfer Trainee Strength, hence the slightly lower figures.

Oct-14 Edition.

4b (GS)

**Trained* Regular Rating General Service Strengths
by Branch and Specialisation and Paid Rank**

Branch	Specialisation	OR-9	OR-8	OR-7	OR-6	OR-4	OR-3	OR-2	Total
Total		570	330	1,920	2,410	3,930	630	7,250	17,060
Warfare		140	~	560	750	1,140	-	1,730	4,320
	WS	-	-	-	-	-	-	390	390
	WS(AWT)	10	-	70	100	140	-	10	340
	WS(AWW)	20	-	70	80	120	-	20	320
	WS(UW)	10	-	40	50	60	-	80	240
	WS(EW)	10	-	40	50	90	-	160	350
	CIS	20	-	80	120	170	-	320	710
	HM	-	-	-	-	-	-	10	10
	HM(H)	~	-	10	10	20	-	50	90
	Mine Warfare	10	-	30	50	70	-	160	310
	Diver	10	-	20	50	80	-	160	340
	Seaman Specialist	10	-	40	50	140	-	360	590
	Weapons Analyst	-	-	-	-	-	-	-	-
	PT	10	-	20	60	100	-	-	190
	RN Police	10	-	40	80	90	-	-	220
	CT	20	~	100	40	50	-	10	230
	Unspecified	-	-	-	-	-	-	-	-
Engineer		250	80	650	570	760	-	1,320	3,640
	MEM	20	-	60	50	-	-	-	130
	WEM	10	-	20	10	-	-	-	40
	ET(ME)	140	30	280	290	470	-	860	2,060
	ET(WE)	80	60	300	220	300	-	450	1,400
	ETS	-	-	-	-	-	-	-	-
	Unspecified	-	-	-	-	-	-	-	-
Logistics		60	~	200	350	660	10	920	2,190
	Caterer	20	-	50	40	-	-	-	120
	Steward	-	-	-	~	110	-	190	310
	Chef	-	-	~	70	160	-	260	490
	Writer	20	-	70	110	200	-	260	660
	Supply Chain	20	-	50	90	150	-	170	480
	Family Services	~	-	10	20	-	-	-	30
	RM Chef	~	~	10	20	30	10	40	100
Med		30	~	110	150	250	~	290	830
	Dental Hyg	-	-	~	~	10	-	-	10
	Dental SA	~	-	~	10	30	-	40	80
	Med Asst	20	-	50	70	120	-	210	470
	Naval Nurse	~	-	30	40	80	-	10	160
	RM Med Asst	-	-	~	10	10	~	30	60
	Med Techn	~	~	10	10	10	-	-	40
Other		-	-	-	-	-	-	-	-
Royal Marines		90	240	400	600	1,120	620	3,000	6,080
RM	RM Band	~	10	30	40	60	-	200	350
	RM GS	80	220	370	560	1,060	620	2,800	5,720

* The Trained Strength shown in this table does not include the Transfer Trainee Strength, hence the slightly lower figures.

Oct-14 Edition.

**Trained* Regular Rating Submarine Strengths
by Branch and Specialisation and Paid Rank**

Branch	Specialisation	OR-9	OR-8	OR-7	OR-6	OR-4	OR-3	OR-2	Total
Total		110	150	530	420	710	-	1,270	3,190
Warfare		30	-	100	110	170	-	360	770
	Coxswain (SM)	10	-	20	-	-	-	-	30
	WS(SSM)	10	-	30	50	70	-	150	310
	WS(TSM)	10	-	30	20	40	-	110	210
	CISSM	~	-	20	30	60	-	100	210
	Unspecified	-	-	-	-	-	-	-	-
Engineer		70	150	390	230	410	-	690	1,940
	MEM	-	-	20	-	-	-	-	20
	WEM	-	-	~	-	-	-	-	~
	ET(ME)	40	100	230	110	230	-	420	1,130
	ET(WE)	30	50	130	120	180	-	280	790
	Unspecified	-	-	-	-	-	-	-	-
LOGS		~	-	30	60	100	-	210	400
	Caterer	-	-	10	~	-	-	-	20
	Steward	-	-	-	~	20	-	50	80
	Chef	~	-	~	20	40	-	70	140
	Writer	-	-	~	20	20	-	40	80
	Supply Chain	-	-	10	20	20	-	40	100
	Family Services	-	-	-	-	-	-	-	-
MED		~	-	10	20	30	-	10	80
	Med Asst	~	-	10	20	30	-	10	80
Other		-	-	-	-	-	-	-	-

* The Trained Strength shown in this table does not include the Transfer Trainee Strength, hence the slightly lower figures.

**Trained* Regular Rating Fleet Air Arm Strengths
by Branch and Specialisation and Paid Rank**

Branch	Specialisation	OR-9	OR-8	OR-7	OR-6	OR-4	OR-3	OR-2	Total
Total		110	40	520	800	1,030	-	1,290	3,780
Warfare (XAV)		30	-	80	150	200	-	240	700
	Aircrewmen	10	-	20	40	30	-	-	100
	NA(AC)	10	-	20	30	40	-	20	110
	NA(AH)	10	-	20	40	90	-	230	400
	NA(PHOT)	~	-	10	20	30	-	-	50
	RM Aircrewmen	~	-	10	20	10	-	-	40
	Unspecified	-	-	-	-	-	-	-	-
Warfare (XR)		~	-	10	20	20	-	40	100
	HM(M)	~	-	10	20	20	-	40	100
Engineer		80	40	420	630	810	-	1,010	2,980
	AEA	-	-	80	-	-	-	-	80
	AEM	10	-	40	60	-	-	-	110
	AET	70	40	280	560	750	-	960	2,660
	NA(SE)	~	-	10	20	50	-	50	140
Other		-	-	-	-	-	-	-	-

Oct-14 Edition.

* The Trained Strength shown in this table does not include the Transfer Trainee Strength, hence the slightly lower figures.

5a**Untrained Regular Royal Navy and Royal Marines Officer Strengths by Branch and Paid Rank**

	OF4+	OF3	OF2	OF1	OFD	Total
Total	-	-	230	460	200	880

Warfare	-	-	120	220	120	460
Engineer	-	-	70	80	60	210
Logistics	-	-	~	10	10	20
Medical	-	-	40	40	-	80
Medical Services	-	-	-	~	-	~
Dental	-	-	~	~	-	~
QARNNS	-	-	-	-	-	-
Chaplain	-	-	-	-	-	-
No Spec	-	-	-	-	-	-
RM General Service	-	-	-	100	-	100
RM Band	-	-	-	-	-	-
Careers/Other	-	-	-	-	-	-

Oct-14 Edition.

Note: Midshipmen are counted as OF-D

**Untrained Regular Royal Navy and Royal Marine Rating
Strengths by Branch and Paid Rank**

		OR6+	OR4	OR3	OR2	Total
Total		-	-	-	2,030	2,030
XR		-	-	-	350	350
	WS	-	-	-	90	90
	CIS	-	-	-	60	60
	HM	-	-	-	10	10
	Mine Warfare	-	-	-	30	30
	Diver	-	-	-	40	40
	Seaman Specialist	-	-	-	90	90
	CT	-	-	-	20	20
	Unspecified	-	-	-	-	-
XSM		-	-	-	90	90
	WS(SSM)	-	-	-	40	40
	WS(TSM)	-	-	-	20	20
	CISSM	-	-	-	30	30
	Unspecified	-	-	-	-	-
XAV		-	-	-	40	40
	Aircrewman	-	-	-	10	10
	NA(AC)	-	-	-	10	10
	NA(AH)	-	-	-	20	20
	NA(Phot)	-	-	-	-	-
	Unspecified	-	-	-	-	-
EGS		-	-	-	280	280
	ET(ME)	-	-	-	160	160
	ET(WE)	-	-	-	120	120
	Unspecified	-	-	-	-	-
ESM		-	-	-	170	170
	ET(MESM)	-	-	-	90	90
	ET(WESM)	-	-	-	80	80
	Unspecified	-	-	-	-	-
EAE		-	-	-	290	290
	AET	-	-	-	280	280
	NA(SE)	-	-	-	10	10
	Unspecified	-	-	-	-	-
LOGS		-	-	-	130	130
	Chef	-	-	-	60	60
	Steward	-	-	-	10	10
	Supply Chain	-	-	-	30	30
	Writer	-	-	-	20	20
	Unspecified	-	-	-	-	-
MED		-	-	-	70	70
	Dental SA	-	-	-	-	-
	Med Asst	-	-	-	50	50
	Naval Nurse	-	-	-	10	10
	Unspecified	-	-	-	-	-
RM GS		-	-	-	560	560
RM Band		-	-	-	60	60
	Band	-	-	-	60	60
	Bugler	-	-	-	10	10
	Unspecified	-	-	-	-	-
Unknown		-	-	-	-	-

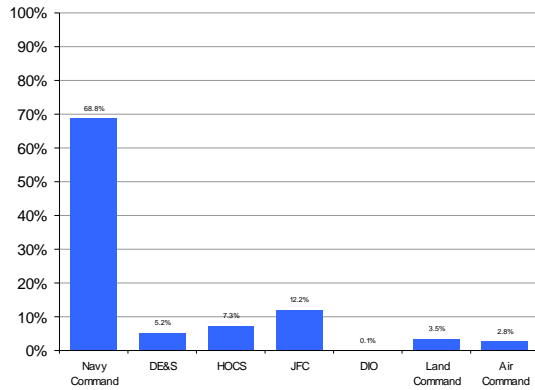
Officers

TLB											% of Total Trained Strength
	OF9	OF8	OF7	OF6	OF5	OF4	OF3	OF2	OF1	Total	
Total	~	10	30	80	270	1,040	1,930	2,450	120	5,930	100.0%
Navy Command	~	~	20	40	130	530	1,340	1,910	110	4,080	68.8%
DE&S	-	-	-	10	30	80	90	100	-	310	5.2%
HOCS	-	-	10	20	50	180	130	50	-	440	7.3%
JFC	-	-	-	10	60	210	250	190	10	720	12.2%
DIO	-	-	-	-	-	-	-	-	-	-	0.1%
Land Command	-	-	-	-	-	20	70	120	-	210	3.5%
Air Command	-	-	-	-	-	20	50	90	-	170	2.8%

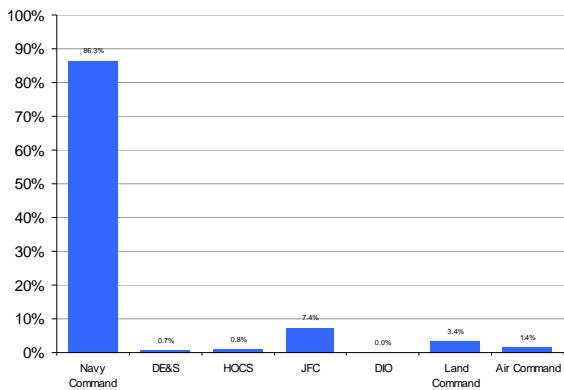
Ratings

TLB									% of Total Trained Strength
	OR9	OR8	OR7	OR6	OR4	OR3	OR2	Total	
Total	790	510	2,970	3,640	5,680	630	9,810	24,020	100.0%
Navy Command	630	410	2,270	2,950	4,880	500	9,090	20,740	86.3%
DE&S	50	20	70	10	-	-	-	160	0.7%
HOCS	20	10	80	40	40	-	20	200	0.8%
JFC	60	50	310	320	500	120	420	1,770	7.4%
DIO	-	-	-	-	-	-	-	-	0.0%
Land Command	20	-	120	210	190	10	260	830	3.4%
Air Command	10	20	120	100	60	-	20	330	1.4%

Trained* Regular Royal Navy and Royal Marine Officer strength by Top Level Budget



Trained* Regular Royal Navy and Royal Marine Ratings strength by Top Level Budget



* The Trained Strength shown in this table does not include the Transfer Trainee Strength, hence the slightly lower figures.

7a Trained Regular Royal Navy and Royal Marines Length of Service by Rank

Royal Navy Officers

Rank		Average LOS on Promotion	Current Average LOS	Average LOS on Exit			
				Overall	VO	TX	OW
OF7+	Admiral	33.6	33.9	36.9	N/A	36.9	N/A
OF6	Commodore	29.4	31.0	34.5	33.8	35.9	N/A
OF5	Captain	26.5	29.3	32.3	32.5	32.0	N/A
OF4	Commander	19.6	23.4	26.4	24.9	28.6	29.4
OF3	Lt Commander	11.2	16.6	20.3	18.6	22.6	20.9
OF2	Lieutenant	6.0	10.8	12.6	12.8	13.4	9.3
OF1	Sub-Lieutenant	2.0	6.7	4.2	4.8	N/A	3.7
OFD	Midshipman	N/A	N/A	N/A	N/A	N/A	N/A
Overall		15.2	16.1	20.7	19.7	23.5	16.1

Royal Marine Officers

Rank		Average LOS on Promotion	Current Average LOS	Average LOS on Exit			
				Overall	VO	TX	OW
OF7+	Major General and Above	31.5	32.5	34.8	N/A	34.8	N/A
OF6	Brigadier	27.6	30.0	28.6	22.5	34.7	N/A
OF5	Colonel	23.6	26.9	22.3	22.3	N/A	N/A
OF4	Lt Colonel	17.7	21.6	22.9	20.4	23.4	28.8
OF3	Major	12.3	15.0	15.2	13.2	16.4	29.1
OF2	Captain	3.7	10.4	11.5	11.0	9.7	13.7
OF1	Lieutenant	2.8	11.8	N/A	N/A	N/A	N/A
Overall		11.4	14.9	16.0	14.1	19.4	18.2

Royal Navy Ratings

Rank		Average LOS on Promotion	Current Average LOS	Average LOS on Exit				
				Overall	VO	TX	OW	PTO
OR-9	Warrant Officer 1st Class	26.4	28.5	31.1	29.2	33.1	30.2	25.9
OR-8	Warrant Officer 2nd Class	21.2	25.3	26.5	26.3	27.2	23.2	24.0
OR-7	Chief Petty Officer	18.4	20.5	23.0	21.5	25.6	23.8	15.5
OR-6	Petty Officer	12.1	16.0	20.0	18.4	23.3	18.9	14.6
OR-4	Leading Hand	6.6	10.3	13.0	11.0	21.4	12.2	6.8
OR-2	Able Rating	N/A	4.5	6.0	5.9	12.3	5.4	4.7
Overall		12.1	11.4	14.7	12.3	24.2	10.0	13.9

Royal Marine Ratings

Rank		Average LOS on Promotion	Current Average LOS	Average LOS on Exit				
				Overall	VO	TX	OW	PTO
OR-9	Warrant Officer 1st Class	23.5	27.2	29.2	29.3	29.8	N/A	24.7
OR-8	Warrant Officer 2nd Class	21.1	24.0	23.6	26.7	25.6	20.2	21.2
OR-7	Colour Sergeant	16.6	19.8	23.2	23.3	26.4	20.8	16.8
OR-6	Sergeant	12.9	14.8	19.9	22.2	22.5	15.9	15.0
OR-4	Corporal	7.8	10.1	13.3	10.8	21.4	13.5	6.5
OR-3	Lance Corporal	N/A	6.4	7.2	N/A	N/A	7.2	N/A
OR-2	Marine	N/A	4.5	6.9	6.3	10.3	7.4	3.8
Overall		11.8	8.9	10.9	8.3	19.8	10.0	15.4

Notes

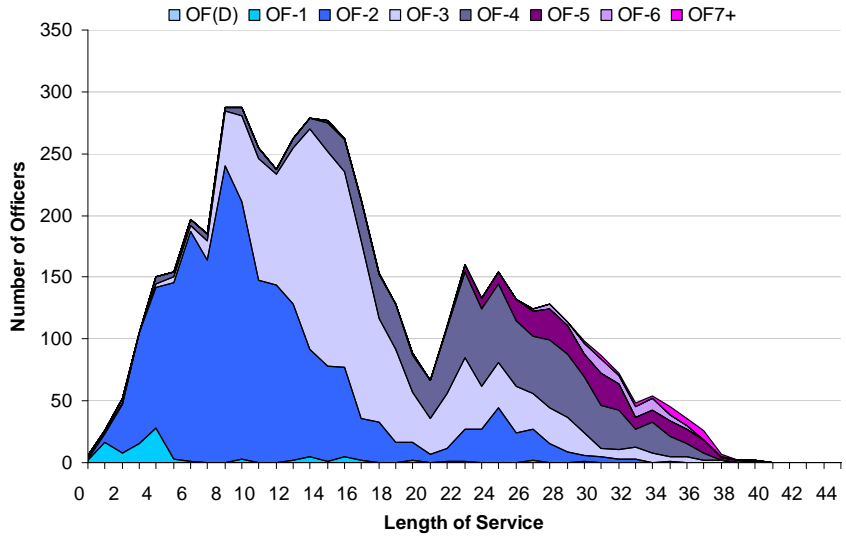
- 1 Flows data are for the last 12 months
- 2 LOS is taken from entry into the RN/RM
- 3 RN Rating and RM Other Rank exits include Promotion to Officer
- 4 Paid rank has been used for the current average LOS, but all other calculations feature substantive rank

Key

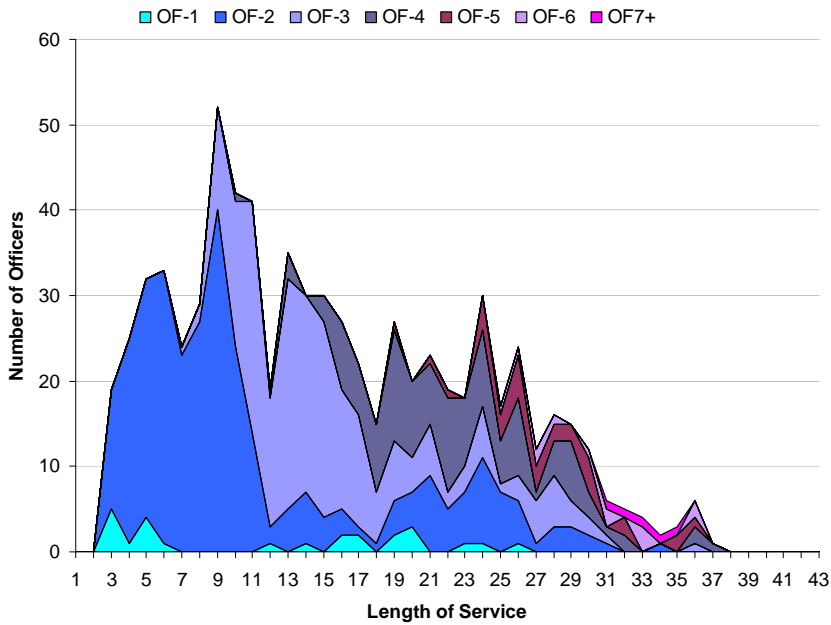
- VO Voluntary Outflow
- TX Time Expiry
- OW Other Wastage
- PTO Promotion to Officer

7b Trained Regular Officer Length of Service by Paid Rank

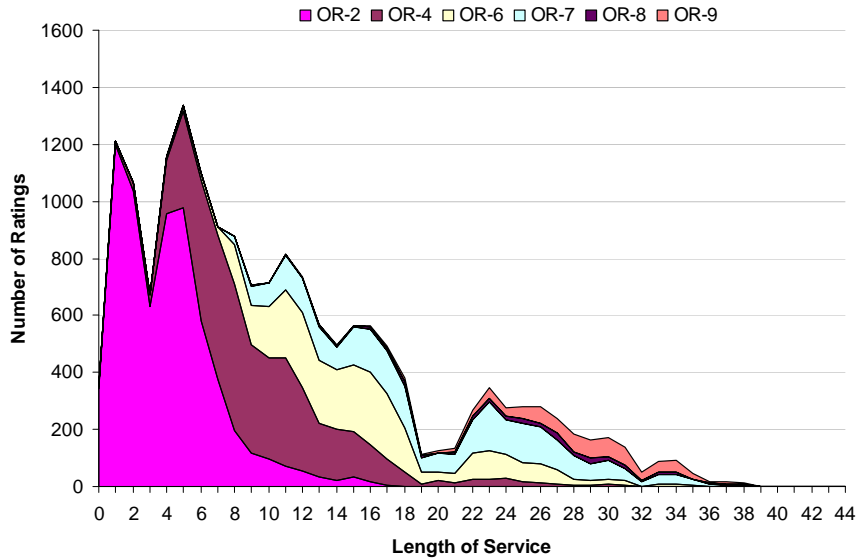
Royal Navy Officer Strength by Rank and Length of Service



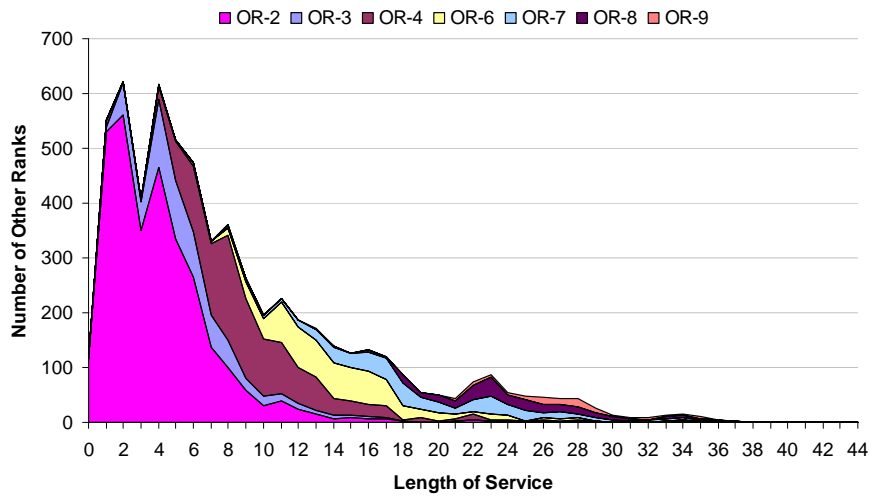
Royal Marine Officer Strength by Rank and Length of service



Royal Navy Rating Strength by Rank and Length of Service



Royal Marine Other Rank Strength by Rank and Length of Service



9a

Trained Regular Royal Navy and Royal Marine Officer Outflow

	2010/2011		2011/2012		2012/2013		2013/2014		12 Mths to 1st Oct 14		Actual Sep 14
	Nos.	%	Nos.	%	Nos.	%	Nos.	%	Nos.	%	
Total Officers	390	6.0%	510	7.9%	540	8.5%	460	7.6%	420	7.0%	40
Royal Navy Officers											
Total	340	6.0%	450	8.0%	460	8.3%	410	7.6%	360	6.9%	30
Voluntary Outflow	170	2.9%	180	3.2%	200	3.7%	230	4.3%	220	4.1%	20
Other Wastage	30	0.5%	40	0.7%	40	0.7%	30	0.6%	30	0.6%	-
Time Expiry	150	2.6%	170	3.0%	150	2.7%	140	2.7%	120	2.3%	10
Redundancy	-	0.0%	60	1.1%	70	1.2%	-	0.1%	-	0.0%	-
Royal Marine Officers											
Total	50	6.2%	60	7.6%	80	10.5%	60	7.4%	50	7.3%	-
Voluntary Outflow	20	2.4%	20	3.0%	30	4.1%	40	5.0%	30	4.3%	-
Other Wastage	-	0.6%	10	1.0%	10	1.7%	10	1.1%	10	1.3%	-
Time Expiry	20	3.2%	30	3.3%	20	2.9%	10	1.3%	10	1.6%	-
Redundancy	-	0.0%	-	0.3%	10	1.8%	-	0.0%	-	0.0%	-
Warfare											
Total	150	5.4%	200	7.3%	190	7.0%	200	7.4%	180	6.7%	10
Voluntary Outflow	70	2.6%	80	3.0%	80	3.0%	100	3.8%	100	3.6%	10
Other Wastage	10	0.4%	20	0.8%	20	0.7%	20	0.8%	20	0.7%	-
Time Expiry	70	2.4%	80	2.8%	70	2.7%	70	2.8%	60	2.4%	-
Redundancy	-	0.0%	20	0.7%	20	0.5%	-	0.0%	-	0.0%	-
Engineer											
Total	130	6.9%	140	7.7%	150	8.6%	140	8.7%	140	8.6%	20
Voluntary Outflow	70	3.7%	60	3.2%	90	5.0%	100	5.7%	90	5.6%	10
Other Wastage	10	0.3%	10	0.6%	10	0.6%	-	0.3%	10	0.4%	-
Time Expiry	50	2.9%	50	2.9%	50	2.8%	40	2.6%	40	2.7%	10
Redundancy	-	0.0%	20	1.0%	-	0.2%	-	0.0%	-	0.0%	-
Logistics											
Total	30	5.6%	60	10.1%	70	12.7%	20	4.8%	20	4.2%	-
Voluntary Outflow	20	3.1%	20	2.7%	10	2.6%	10	2.6%	10	2.8%	-
Other Wastage	-	0.9%	-	0.3%	-	0.7%	-	0.4%	-	0.2%	-
Time Expiry	10	1.6%	20	2.7%	10	1.3%	10	1.6%	10	1.2%	-
Redundancy	-	0.0%	20	4.3%	40	8.0%	-	0.2%	-	0.0%	-
Medical											
Total	20	6.3%	20	8.5%	30	10.3%	20	8.8%	10	5.4%	-
Voluntary Outflow	10	2.1%	10	3.5%	10	3.3%	10	3.1%	10	2.7%	-
Other Wastage	-	1.4%	-	0.7%	-	1.8%	-	1.2%	-	1.1%	-
Time Expiry	10	2.8%	10	4.3%	10	4.0%	10	3.5%	-	1.5%	-
Redundancy	-	0.0%	-	0.0%	-	1.1%	-	1.2%	-	0.0%	-
Dental Services											
Total	-	6.7%	-	5.2%	-	6.9%	-	5.6%	-	1.9%	-
Voluntary Outflow	-	3.3%	-	1.7%	-	1.7%	-	1.9%	-	0.0%	-
Other Wastage	-	0.0%	-	0.0%	-	0.0%	-	0.0%	-	0.0%	-
Time Expiry	-	3.3%	-	3.5%	-	1.7%	-	3.7%	-	1.9%	-
Redundancy	-	0.0%	-	0.0%	-	3.5%	-	0.0%	-	0.0%	-
Medical Services											
Total	10	12.5%	10	13.8%	-	8.3%	-	6.6%	-	8.3%	-
Voluntary Outflow	-	3.1%	-	7.6%	-	5.0%	-	6.6%	-	8.3%	-
Other Wastage	-	1.6%	-	0.0%	-	1.7%	-	0.0%	-	0.0%	-
Time Expiry	-	7.8%	-	6.1%	-	1.7%	-	0.0%	-	0.0%	-
Redundancy	-	0.0%	-	0.0%	-	0.0%	-	0.0%	-	0.0%	-
QARNS											
Total	-	3.8%	10	9.3%	10	10.1%	10	12.6%	-	1.5%	-
Voluntary Outflow	-	1.3%	-	4.0%	10	8.6%	-	3.1%	-	1.5%	-
Other Wastage	-	2.5%	-	1.3%	-	0.0%	-	6.3%	-	0.0%	-
Time Expiry	-	0.0%	-	4.0%	-	1.4%	-	3.1%	-	0.0%	-
Redundancy	-	0.0%	-	0.0%	-	0.0%	-	0.0%	-	0.0%	-
Chaplain											
Total	-	4.6%	10	17.0%	-	5.3%	-	7.0%	-	6.9%	-
Voluntary Outflow	-	0.0%	-	6.8%	-	1.8%	-	3.5%	-	3.5%	-
Other Wastage	-	1.5%	-	0.0%	-	0.0%	-	0.0%	-	0.0%	-
Time Expiry	-	3.1%	10	10.2%	-	3.5%	-	3.5%	-	3.5%	-
Redundancy	-	0.0%	-	0.0%	-	0.0%	-	0.0%	-	0.0%	-
Other / No Spec *											
Total	-	N/A	-	N/A	-	N/A	-	N/A	-	N/A	-
Voluntary Outflow	-	N/A	-	N/A	-	N/A	-	N/A	-	N/A	-
Other Wastage	-	N/A	-	N/A	-	N/A	-	N/A	-	N/A	-
Time Expiry	-	N/A	-	N/A	-	N/A	-	N/A	-	N/A	-
Redundancy	-	N/A	-	N/A	-	N/A	-	N/A	-	N/A	-
RM GS											
Total	50	6.3%	60	7.6%	80	10.4%	50	7.2%	50	7.1%	-
Voluntary Outflow	20	2.5%	20	3.1%	30	4.1%	40	4.8%	30	4.1%	-
Other Wastage	-	0.6%	10	1.0%	10	1.6%	10	1.1%	10	1.4%	-
Time Expiry	20	3.2%	20	3.2%	20	2.9%	10	1.4%	10	1.6%	-
Redundancy	-	0.0%	-	0.3%	10	1.8%	-	0.0%	-	0.0%	-
RM BS											
Total	-	N/A	-	0.0%	-	16.9%	-	17.9%	-	18.8%	-
Voluntary Outflow	-	N/A	-	0.0%	-	8.5%	-	17.9%	-	18.8%	-
Other Wastage	-	N/A	-	0.0%	-	8.5%	-	0.0%	-	0.0%	-
Time Expiry	-	N/A	-	0.0%	-	0.0%	-	0.0%	-	0.0%	-
Redundancy	-	N/A	-	0.0%	-	0.0%	-	0.0%	-	0.0%	-
Career *											
Total	-	N/A	-	N/A	-	N/A	-	N/A	-	N/A	-
Voluntary Outflow	-	N/A	-	N/A	-	N/A	-	N/A	-	N/A	-
Other Wastage	-	N/A	-	N/A	-	N/A	-	N/A	-	N/A	-
Time Expiry	-	N/A	-	N/A	-	N/A	-	N/A	-	N/A	-
Redundancy	-	N/A	-	N/A	-	N/A	-	N/A	-	N/A	-

* No outflow as a percentage of strength is shown for Other/No Spec or Careers
Oct-14 Edition.

9b

Trained Regular Royal Navy and Royal Marine Rating Outflow

	2010/2011		2011/2012		2012/2013		2013/2014		12 Mths to 1st Oct 14		Actual Sep 14
	Nos.	%	Nos.	%	Nos.	%	Nos.	%	Nos.	%	
Total Ratings	2,450	8.5%	3,360	12.0%	3,290	12.7%	2,760	11.2%	2,600	10.7%	260
Royal Navy Ratings											
Total	1,980	8.9%	2,670	12.4%	2,390	12.1%	2,280	12.4%	2,130	11.8%	210
Voluntary Outflow	900	4.0%	870	4.0%	1,060	5.3%	1,190	6.4%	1,210	6.7%	120
Other Wastage	510	2.3%	640	3.0%	410	2.1%	380	2.1%	360	2.0%	30
Time Expiry	490	2.2%	510	2.4%	530	2.7%	610	3.3%	490	2.7%	40
Promotion to Officer	90	0.4%	50	0.2%	50	0.2%	70	0.4%	70	0.4%	10
Redundancy	-	0.0%	590	2.8%	350	1.8%	40	0.2%	-	0.0%	-
Royal Marine Ratings											
Total	460	7.2%	690	10.6%	900	14.6%	480	7.7%	470	7.5%	50
Voluntary Outflow	240	3.8%	380	5.8%	560	9.0%	240	3.8%	270	4.3%	40
Other Wastage	100	1.6%	180	2.8%	190	3.1%	130	2.1%	100	1.6%	10
Time Expiry	100	1.6%	120	1.8%	140	2.3%	80	1.4%	80	1.2%	10
Promotion to Officer	20	0.2%	20	0.3%	10	0.2%	20	0.4%	20	0.4%	-
Redundancy	-	0.0%	-	0.0%	-	0.0%	-	0.0%	-	0.0%	-
XR											
Total	550	9.8%	660	12.2%	710	14.5%	550	12.1%	510	11.5%	60
Voluntary Outflow	270	4.7%	260	4.9%	320	6.6%	300	6.6%	300	6.6%	40
Other Wastage	140	2.5%	170	3.2%	110	2.2%	110	2.5%	100	2.1%	10
Time Expiry	130	2.3%	130	2.4%	130	2.7%	130	2.8%	110	2.5%	10
Promotion to Officer	10	0.2%	-	0.1%	10	0.2%	10	0.2%	10	0.2%	-
Redundancy	-	0.0%	90	1.6%	140	2.7%	-	0.1%	-	0.0%	-
XSM											
Total	80	8.6%	80	9.0%	80	9.4%	80	9.8%	80	10.1%	-
Voluntary Outflow	30	3.7%	30	3.7%	30	4.0%	30	4.0%	40	5.1%	-
Other Wastage	20	1.9%	20	2.0%	20	2.2%	20	2.1%	10	1.8%	-
Time Expiry	20	2.5%	30	3.3%	30	3.2%	20	3.2%	20	2.9%	-
Promotion to Officer	-	0.5%	-	0.0%	-	0.0%	-	0.5%	-	0.4%	-
Redundancy	-	0.0%	-	0.0%	-	0.0%	-	0.0%	-	0.0%	-
XAV											
Total	60	7.4%	80	9.3%	100	13.0%	80	11.5%	60	8.1%	10
Voluntary Outflow	30	3.8%	30	3.5%	20	2.6%	40	5.0%	30	4.0%	-
Other Wastage	10	1.6%	10	1.3%	10	1.8%	10	1.4%	10	1.7%	-
Time Expiry	20	1.8%	10	1.6%	20	2.0%	20	2.7%	10	2.0%	-
Promotion to Officer	-	0.2%	-	0.0%	-	0.5%	-	0.4%	-	0.4%	-
Redundancy	-	0.0%	20	2.8%	50	6.0%	10	2.0%	-	0.0%	-
EGS											
Total	480	9.2%	760	15.6%	600	14.1%	680	17.4%	640	17.1%	60
Voluntary Outflow	220	4.2%	240	5.0%	310	7.3%	430	10.9%	410	10.9%	30
Other Wastage	130	2.6%	180	3.7%	80	1.9%	90	2.2%	90	2.5%	10
Time Expiry	100	1.9%	140	2.8%	120	2.7%	150	3.9%	120	3.2%	10
Promotion to Officer	30	0.5%	20	0.4%	10	0.3%	20	0.4%	20	0.5%	-
Redundancy	-	0.0%	180	3.8%	80	2.0%	-	0.0%	-	0.0%	-
ESM											
Total	170	8.0%	160	7.4%	200	9.5%	240	11.8%	260	12.9%	20
Voluntary Outflow	50	2.4%	60	2.7%	110	5.2%	120	5.9%	140	6.8%	10
Other Wastage	50	2.5%	40	2.1%	30	1.5%	50	2.3%	40	2.0%	-
Time Expiry	50	2.4%	50	2.4%	60	2.7%	70	3.4%	70	3.7%	10
Promotion to Officer	10	0.6%	-	0.2%	-	0.2%	-	0.2%	10	0.3%	-
Redundancy	-	0.0%	-	0.0%	-	0.0%	-	0.0%	-	0.0%	-
EAE											
Total	270	7.6%	460	13.1%	240	7.7%	280	9.0%	280	9.2%	30
Voluntary Outflow	120	3.5%	100	2.7%	110	3.3%	120	4.0%	150	5.1%	20
Other Wastage	50	1.4%	100	2.7%	50	1.6%	50	1.5%	40	1.5%	-
Time Expiry	70	2.1%	60	1.7%	70	2.2%	80	2.8%	60	1.9%	-
Promotion to Officer	20	0.5%	10	0.4%	10	0.2%	20	0.7%	20	0.8%	-
Redundancy	-	0.0%	200	5.6%	10	0.3%	-	0.0%	-	0.0%	-

Oct-14 Edition.

Trained Regular Royal Navy and Royal Marines Rating Outflow (continued)

	2010/2011		2011/2012		2012/2013		2013/2014		12 Mths to 1st Oct 14		Actual Sep 14
	Nos.	%	Nos.	%	Nos.	%	Nos.	%	Nos.	%	
LOGS											
Total	290	8.9%	380	12.4%	340	12.2%	290	11.2%	240	9.2%	20
Voluntary Outflow	130	4.1%	110	3.7%	110	3.9%	110	4.3%	120	4.5%	10
Other Wastage	70	2.2%	90	3.0%	80	2.9%	50	1.8%	50	1.8%	10
Time Expiry	80	2.4%	80	2.4%	90	3.3%	110	4.2%	70	2.8%	-
Promotion to Officer	10	0.2%	10	0.2%	-	0.1%	10	0.3%	-	0.2%	-
Redundancy	-	0.0%	100	3.1%	60	2.1%	20	0.7%	-	0.0%	-
MED											
Total	100	10.4%	100	10.6%	120	12.5%	90	10.1%	90	9.4%	10
Voluntary Outflow	50	4.8%	40	4.2%	50	5.1%	40	4.8%	40	4.1%	-
Other Wastage	30	3.2%	30	3.3%	20	2.1%	20	2.2%	20	2.4%	-
Time Expiry	20	1.9%	20	1.9%	20	2.5%	20	2.4%	20	2.3%	-
Promotion to Officer	10	0.6%	10	0.6%	10	1.0%	-	0.5%	-	0.5%	-
Redundancy	-	0.0%	10	0.6%	20	1.8%	-	0.2%	-	0.0%	-
Other / No Spec *											
Total	-	N/A	-	N/A	-	N/A	-	N/A	-	N/A	-
Voluntary Outflow	-	N/A	-	N/A	-	N/A	-	N/A	-	N/A	-
Other Wastage	-	N/A	-	N/A	-	N/A	-	N/A	-	N/A	-
Time Expiry	-	N/A	-	N/A	-	N/A	-	N/A	-	N/A	-
Promotion to Officer	-	N/A	-	N/A	-	N/A	-	N/A	-	N/A	-
Redundancy	-	N/A	-	N/A	-	N/A	-	N/A	-	N/A	-
RM GS											
Total	430	7.2%	680	11.1%	870	15.2%	440	7.7%	430	7.5%	50
Voluntary Outflow	220	3.7%	370	6.1%	540	9.5%	220	3.9%	240	4.2%	40
Other Wastage	100	1.6%	180	2.9%	180	3.2%	120	2.2%	100	1.7%	10
Time Expiry	100	1.6%	110	1.8%	140	2.4%	70	1.3%	70	1.2%	10
Promotion to Officer	20	0.3%	20	0.3%	10	0.1%	20	0.4%	20	0.3%	-
Redundancy	-	0.0%	-	0.0%	-	0.0%	-	0.0%	-	0.0%	-
RM BS											
Total	20	6.7%	10	3.9%	20	5.3%	30	7.6%	30	7.6%	-
Voluntary Outflow	10	3.3%	10	1.8%	10	1.8%	10	2.6%	20	4.4%	-
Other Wastage	-	1.5%	-	0.3%	-	1.5%	-	1.2%	-	0.3%	-
Time Expiry	10	1.8%	10	1.8%	-	1.5%	10	3.2%	10	2.3%	-
Promotion to Officer	-	0.0%	-	0.0%	-	0.6%	-	0.6%	-	0.6%	-
Redundancy	-	0.0%	-	0.0%	-	0.0%	-	0.0%	-	0.0%	-
Career *											
Total	-	N/A	-	N/A	-	N/A	-	N/A	-	N/A	-
Voluntary Outflow	-	N/A	-	N/A	-	N/A	-	N/A	-	N/A	-
Other Wastage	-	N/A	-	N/A	-	N/A	-	N/A	-	N/A	-
Time Expiry	-	N/A	-	N/A	-	N/A	-	N/A	-	N/A	-
Promotion to Officer	-	N/A	-	N/A	-	N/A	-	N/A	-	N/A	-
Redundancy	-	N/A	-	N/A	-	N/A	-	N/A	-	N/A	-

* No outflow as a percentage of strength is shown for Other/No Spec or Careers
Oct-14 Edition.

Trained Regular Royal Navy and Royal Marine Officer Voluntary Outflow Exits by Paid Rank

	2010/2011		2011/2012		2012/2013		2013/2014		12 Months to 1st Oct 14		Actual Sep 14
	Nos.	%	Nos.	%	Nos.	%	Nos.	%	Nos.	%	
Total Officers	190	2.9%	200	3.1%	240	3.7%	260	4.3%	250	4.1%	20
Royal Navy Officers											
Total	170	2.9%	180	3.2%	200	3.7%	230	4.3%	220	4.1%	20
OF9	-	-	-	-	-	-	-	-	-	-	-
OF8	-	-	-	-	-	-	-	-	-	-	-
OF7	-	-	-	-	-	-	-	-	-	-	-
OF6	~	6.9%	10	10.1%	10	10.2%	10	13.9%	10	15.5%	~
OF5	10	4.7%	10	5.5%	10	5.3%	20	6.4%	20	7.8%	~
OF4	40	3.4%	30	3.4%	40	4.3%	40	4.8%	40	4.6%	~
OF3	60	3.0%	70	3.7%	70	3.9%	80	4.3%	70	4.0%	~
OF2	60	2.4%	50	2.3%	70	3.1%	80	3.7%	70	3.4%	10
OF1	-	-	~	1.1%	-	-	-	-	~	1.3%	-
Royal Marine Officers											
Total	20	2.4%	20	3.0%	30	4.1%	40	5.0%	30	4.3%	~
OF9	-	-	-	-	-	-	-	-	-	-	-
OF8	-	-	-	-	-	-	-	-	-	-	-
OF7	-	-	-	-	-	-	-	-	-	-	-
OF6	-	-	-	-	~	27.3%	-	-	~	7.9%	-
OF5	~	5.5%	-	-	-	-	~	5.8%	~	6.3%	-
OF4	~	3.3%	~	4.1%	10	5.1%	10	7.0%	~	4.2%	-
OF3	~	1.2%	10	3.3%	10	3.9%	10	4.7%	10	3.8%	-
OF2	10	3.1%	10	3.3%	10	4.3%	20	5.2%	20	5.0%	~
OF1	-	-	-	-	-	-	-	-	-	-	-

Oct-14 Edition.

10b Trained Regular Royal Navy and Royal Marine Rating Voluntary Outflow Exits by Paid Rank

	2010/2011		2011/2012		2012/2013		2013/2014		12 Months to 1st Oct 14		Actual
	Nos.	%	Nos.	%	Nos.	%	Nos.	%	Nos.	%	Sep 14
Total Ratings	1,140	4.0%	1,250	4.5%	1,610	6.2%	1,420	5.8%	1,470	6.1%	160
XR											
Total	270	4.7%	260	4.9%	320	6.6%	300	6.6%	300	6.6%	40
OR9	10	3.8%	10	4.8%	10	8.8%	~	3.3%	10	5.3%	~
OR8	-	-	-	10.6%	~	13.4%	~	9.3%	~	22.6%	~
OR7	20	3.2%	30	4.6%	40	6.4%	20	4.2%	20	3.1%	~
OR6	30	2.8%	20	1.8%	40	4.4%	30	3.5%	20	3.3%	~
OR4	40	3.4%	30	2.2%	60	4.4%	60	5.2%	60	4.7%	~
OR2	170	6.7%	180	7.7%	180	8.7%	180	9.8%	190	10.6%	20
XSM											
Total	30	3.7%	30	3.7%	30	4.0%	30	4.0%	40	5.1%	~
OR9	~	4.6%	~	5.0%	~	11.5%	~	3.1%	~	3.0%	~
OR8	-	-	-	-	-	-	-	-	-	-	~
OR7	~	2.8%	~	2.9%	~	2.9%	10	7.2%	10	7.3%	~
OR6	~	3.3%	~	3.3%	~	1.6%	~	3.4%	~	1.8%	~
OR4	~	2.1%	~	2.7%	~	2.3%	~	0.6%	~	1.2%	~
OR2	20	4.8%	20	4.4%	20	5.2%	20	4.9%	30	7.4%	~
XAV											
Total	30	3.8%	30	3.5%	20	2.6%	40	5.0%	30	4.0%	~
OR9	~	8.1%	~	2.8%	~	3.1%	~	13.7%	~	10.4%	~
OR8	-	-	-	-	-	-	-	-	-	-	~
OR7	~	5.5%	10	7.7%	~	5.7%	~	6.2%	10	7.5%	~
OR6	10	5.5%	~	3.1%	~	1.9%	10	5.3%	~	2.7%	~
OR4	~	1.5%	10	2.4%	~	1.7%	10	3.7%	10	2.8%	~
OR3	-	-	-	-	-	-	-	-	-	-	~
OR2	10	3.6%	10	3.5%	10	2.9%	10	4.5%	10	3.9%	~
EGS											
Total	220	4.2%	240	5.0%	310	7.3%	430	10.9%	410	10.9%	30
OR9	10	4.9%	10	5.6%	20	12.3%	10	6.7%	20	8.7%	~
OR8	10	4.7%	20	6.9%	30	12.8%	40	15.4%	30	17.7%	~
OR7	40	3.4%	40	3.9%	50	5.5%	70	9.0%	60	8.9%	10
OR6	30	2.8%	40	4.3%	50	7.0%	70	11.0%	60	11.1%	10
OR4	40	3.9%	20	2.7%	50	5.6%	80	9.3%	70	9.3%	10
OR2	100	5.5%	110	6.9%	120	8.0%	170	12.7%	160	12.3%	10
ESM											
Total	50	2.4%	60	2.7%	110	5.2%	120	5.9%	140	6.8%	10
OR9	~	1.4%	~	5.9%	~	4.8%	~	1.7%	~	1.5%	~
OR8	~	2.2%	~	1.6%	10	4.0%	~	1.2%	~	3.1%	~
OR7	20	2.9%	10	2.5%	30	6.0%	40	7.9%	40	8.8%	~
OR6	20	3.9%	20	4.1%	30	9.0%	30	11.9%	30	11.5%	~
OR4	~	1.6%	10	1.8%	20	5.3%	20	5.8%	40	9.2%	~
OR2	10	1.6%	20	2.4%	20	2.9%	20	3.8%	30	3.9%	~
EAE											
Total	120	3.5%	100	2.7%	110	3.3%	120	4.0%	150	5.1%	20
OR9	~	4.8%	~	7.0%	~	5.5%	~	7.2%	~	7.8%	~
OR8	~	5.2%	~	5.9%	~	2.0%	~	5.4%	~	2.1%	~
OR7	30	5.2%	20	3.2%	20	3.5%	20	3.9%	20	5.1%	~
OR6	20	2.5%	20	2.1%	20	3.0%	30	4.0%	30	4.7%	10
OR4	~	0.5%	10	1.3%	20	3.1%	10	1.7%	30	3.4%	~
OR2	60	4.6%	50	3.3%	40	3.6%	60	5.6%	70	6.6%	10

	2010/2011		2011/2012		2012/2013		2013/2014		12 Months to 1st Oct 14		Actual
	Nos.	%	Nos.	%	Nos.	%	Nos.	%	Nos.	%	Sep 14
LOGS											
Total	130	4.1%	110	3.7%	110	3.9%	110	4.3%	120	4.6%	10
OR9	~	5.2%	~	5.6%	~	6.5%	~	8.7%	~	8.5%	-
OR8	-	-	-	-	-	-	-	-	-	-	-
OR7	10	2.3%	10	5.6%	10	4.1%	10	5.5%	10	3.7%	~
OR6	10	2.1%	10	2.6%	10	2.1%	10	3.5%	20	3.8%	-
OR4	20	2.8%	20	2.4%	30	3.4%	20	3.2%	30	4.2%	~
OR2	90	5.8%	60	4.4%	60	4.5%	60	5.0%	60	5.0%	10
Med											
Total	50	4.8%	40	4.2%	50	5.1%	40	4.7%	40	4.1%	~
OR9	~	14.3%	~	11.4%	~	11.2%	~	11.1%	~	7.3%	-
OR8	-	-	-	-	-	-	-	-	-	-	-
OR7	~	1.7%	~	2.4%	~	3.3%	~	4.3%	10	5.1%	-
OR6	10	3.7%	~	1.6%	~	2.8%	~	1.7%	~	2.3%	-
OR4	10	2.7%	20	5.0%	20	5.6%	20	7.2%	10	4.6%	~
OR3	-	-	~	11.0%	-	-	-	-	-	-	-
OR2	30	8.1%	20	4.8%	20	6.4%	10	4.1%	10	4.2%	~
RM GS											
Total	220	3.7%	370	6.1%	540	9.5%	220	3.9%	240	4.2%	30
OR9	~	4.1%	~	5.3%	10	10.2%	~	1.2%	~	2.3%	-
OR8	~	0.9%	10	3.5%	10	4.0%	10	3.9%	~	1.3%	-
OR7	~	1.3%	10	2.1%	20	3.9%	10	1.9%	10	2.4%	-
OR6	10	1.8%	10	1.9%	30	5.3%	10	1.1%	~	0.7%	-
OR4	50	4.1%	90	7.4%	140	12.7%	30	2.5%	30	2.4%	~
OR3	20	3.5%	30	4.8%	20	3.0%	20	2.6%	20	2.4%	~
OR2	130	4.5%	220	7.1%	330	11.8%	160	5.6%	180	6.5%	30
RM Band											
Total	10	3.3%	10	1.8%	10	1.8%	10	2.6%	20	4.4%	~
OR9	-	-	-	-	-	-	-	-	-	-	-
OR8	~	9.5%	-	-	-	-	-	-	~	8.0%	-
OR7	~	3.4%	-	-	-	-	-	-	~	3.3%	-
OR6	~	2.0%	-	-	-	-	~	3.9%	~	4.1%	-
OR4	~	1.6%	~	1.7%	-	-	~	1.7%	~	1.7%	-
OR3	-	-	-	-	-	-	-	-	-	-	-
OR2	10	4.1%	~	2.8%	10	3.3%	10	3.3%	10	5.4%	~

* No outflow as a percentage of strength is shown for Other/No Spec or Careers
Oct-14 Edition.

11a Trained Regular Royal Navy and Royal Marine Officer Promotions to Substantive Rank

	2010/2011	2011/2012	2012/2013	2013/2014	12 Months to 1st Oct 14
Total Officers	500	480	490	510	520
OF7 and Above	10	20	10	10	10
OF6	20	20	20	20	20
OF5	40	40	30	50	60
OF4	110	100	100	90	120
OF3	240	180	210	220	220
OF2	80	110	120	120	100
OF1	N/A	N/A	N/A	N/A	N/A

11b Trained Regular Royal Navy and Royal Marine Rating & Other Rank Promotions to Substantive Rank

	2010/2011	2011/2012	2012/2013	2013/2014	12 Months to 1st Oct 14
Total Ratings	2,540	1,880	1,530	2,660	2,300
OR9	90	70	30	110	100
OR8	120	110	30	150	110
OR7	460	360	300	420	430
OR6	700	550	410	740	630
OR4	1,150	800	760	1,220	1,020
OR3	20	-	-	-	-

Oct-14 Edition.

12a

Gains to the Trained Regular Royal Navy and Royal Marines Officer Strength from Untrained by Branch

		2010/2011	2011/2012	2012/2013	2013/2014	12 Months to 1st Oct 14
Royal Navy	Officers					
	Total	330	290	290	240	260
Royal Marines	Officers	-	-	-	-	-
	Total	70	40	50	50	50
	Warfare	180	160	140	110	110
	Engineer	90	70	100	80	80
	Logistics	40	30	20	20	40
	Medical	20	20	10	20	20
	Medical Services	~	~	~	~	10
	Dental	~	~	~	~	-
	QARNNS	~	~	~	~	10
	Chaplain	~	~	~	~	~
	Other	~	~	~	~	~
	RM GS	70	40	50	50	50
	RM BS	~	-	~	-	-

		Oct-13	Nov-13	Dec-13	Jan-14	Feb-14	Mar-14	Apr-14	May-14	Jun-14	Jul-14	Aug-14	Sep-14
Royal Navy	Officers												
	Total	10	40	20	10	20	30	-	50	40	10	-	30
Royal Marines	Officers												
	Total	-	-	30	-	20	-	-	-	-	-	-	-
	Warfare	10	30	10	~	10	~	-	30	20	~	~	~
	Engineer	~	10	10	10	10	~	~	20	10	~	-	10
	Logistics	-	~	-	-	~	10	~	~	10	~	-	10
	Medical	-	-	-	-	-	20	-	-	-	~	-	-
	Medical Services	~	-	-	-	-	-	-	~	-	-	-	-
	Dental	-	-	-	-	-	-	-	-	-	-	-	-
	QARNNS	-	-	-	~	-	-	-	~	-	~	-	-
	Chaplain	-	~	-	-	~	-	-	-	-	-	-	-
	Other	-	-	-	-	-	-	-	-	-	-	-	-
	RM GS	-	-	30	-	20	-	-	-	-	-	-	-
	RM BS	-	-	-	-	-	-	-	-	-	-	-	-

Oct-14 Edition.

Gains to the Trained Regular Royal Navy and Royal Marine Rating Strength from Untrained by Branch and Specialisation

		2010/2011	2011/2012	2012/2013	2013/2014	12 Months to 1st Oct 14
Royal Navy	Ratings					
	Total	1,690	910	980	1,230	1,490
Royal Marines	Other Ranks					
	Total	730	530	540	650	610
XR		390	240	270	310	390
	WS	150	70	120	120	120
	WS(AWT)	-	-	-	-	-
	WS(AWW)	-	-	-	-	-
	WS(EW)	-	-	-	-	-
	WS(UW)	-	-	-	-	-
	CIS	60	40	40	40	60
	HM	10	10	20	20	30
	HM(H)	-	-	-	-	-
	HM(M)	-	-	-	-	-
	Mine Warfare	30	20	40	50	60
	Diver	20	20	20	30	30
	Seaman Specialist	100	60	20	40	70
	Weapons Analyst	-	-	-	-	-
	PT	-	-	-	-	-
	RN Police	-	-	-	-	-
	CT	20	10	10	10	10
	Unspecified	-	-	-	-	-
XSM		60	40	40	50	60
	Coxswain (SM)	-	-	-	-	-
	WS(SSM)	20	20	20	30	30
	WS(TSM)	20	-	10	10	20
	CISSM	20	20	10	10	20
	Unspecified	-	-	-	-	-
XAV		80	20	20	30	60
	Aircrewman	-	-	-	-	-
	NA(AC)	20	10	10	-	-
	NA(AH)	60	20	10	30	50
	NA(Phot)	-	-	-	-	-
	RM Aircrewmen	-	-	-	-	-
	Unspecified	-	-	-	-	-
EGS		360	160	210	310	350
	MEM	-	-	-	-	-
	WEM	-	-	-	-	-
	ET(ME)	220	90	150	200	220
	ET(WE)	130	70	60	120	130
	ETS	-	-	-	-	-
	Unspecified	-	-	-	-	-
ESM		160	130	130	150	190
	MEM	-	-	-	-	-
	WEM	-	-	-	-	-
	ET(MESM)	100	60	90	90	110
	ET(WESM)	60	70	40	70	90
EAE		340	190	100	190	220
	AEA	-	-	-	-	-
	AEM	-	-	-	-	-
	AET	320	180	100	180	220
	NA(SE)	20	-	-	10	10
	Unspecified	-	-	-	-	-
LOGS		230	90	140	120	160
	Caterer	-	-	-	-	-
	Chef	50	40	40	50	70
	Steward	60	10	20	30	20
	Supply Chain	40	10	30	30	30
	Writer	80	30	50	20	30
	Family Service	-	-	-	-	-
	Unspecified	-	-	-	-	-
MED		70	50	60	60	60
	Dental Hyg	-	-	-	-	-
	Dental SA	10	-	-	-	-
	Med Asst	50	40	40	50	50
	NN	10	10	10	-	10
	Med Techn	-	-	-	-	-
	RM Med Asst	-	-	-	-	-
	Unspecified	-	-	-	-	-
RM GS		700	510	520	630	570
		-	-	-	-	-
RM Band		30	20	20	20	30
	Band	20	20	20	20	20
	Bugler	10	-	-	10	10

12b Gains to the Trained Regular Royal Navy and Royal Marines Rating Strength from Untrained by Branch and Specialisation (Cont)

		Oct-13	Nov-13	Dec-13	Jan-14	Feb-14	Mar-14	Apr-14	May-14	Jun-14	Jul-14	Aug-14	Sep-14
Royal Navy	Ratings												
	Total	100	190	60	160	70	100	100	140	190	190	40	150
Royal Marines	Other Ranks												
	Total	40	80	90	20	50	60	-	40	70	100	-	60
XR		20	60	-	30	10	50	10	50	30	70	20	40
	WS	~	10	-	20	10	10	10	10	20	20	-	20
	WS(AWT)	-	-	-	-	-	-	-	-	-	-	-	-
	WS(AWW)	-	-	-	-	-	-	-	-	-	-	-	-
	WS(EW)	-	-	-	-	-	-	-	-	-	-	-	-
	WS(UW)	-	-	-	-	-	-	-	-	-	-	-	-
	CIS	~	10	-	10	-	~	-	-	20	-	20	-
	HM	10	10	-	-	~	~	-	-	-	10	-	~
	HM(H)	-	-	-	-	-	-	-	-	-	-	-	-
	HM(M)	-	-	-	-	-	-	-	-	-	-	-	-
	Mine Warfare	10	10	-	-	-	10	-	10	-	10	-	-
	Diver	-	10	-	-	-	10	-	~	-	10	-	-
	Seaman Specialist	-	10	-	-	-	20	-	20	-	10	-	20
	Weapons Analyst	-	-	-	-	-	-	-	-	-	-	-	-
	PT	-	-	-	-	-	-	-	-	-	-	-	-
	RN Police	-	-	-	-	-	-	-	-	-	-	-	-
	CT	-	-	-	-	-	-	-	-	-	10	-	-
	Unspecified	-	-	-	-	-	-	-	-	-	-	-	-
XSM		-	10	-	~	-	10	10	-	20	10	-	~
	Coxswain (SM)	-	-	-	-	-	-	-	-	-	-	-	-
	WS(SSM)	-	10	-	-	-	10	~	-	10	~	-	-
	WS(TSM)	-	10	-	-	-	-	-	-	~	10	-	-
	CISSM	-	-	-	~	-	-	~	-	10	-	-	~
	Unspecified	-	-	-	-	-	-	-	-	-	-	-	-
XAV		-	20	-	-	-	-	20	-	20	-	-	-
	Aircrewman	-	~	-	-	-	-	-	-	-	-	-	-
	NA(AC)	-	-	-	-	-	-	-	-	-	-	-	-
	NA(AH)	-	10	-	-	-	-	20	-	20	-	-	-
	NA(Phot)	-	-	-	-	-	-	-	-	-	-	-	-
	RM Aircrewmen	-	-	-	-	-	-	-	-	-	-	-	-
	Unspecified	-	-	-	-	-	-	-	-	-	-	-	-
EGS		30	30	-	50	20	20	10	60	30	50	20	40
	MEM	-	-	-	-	-	-	-	-	-	-	-	-
	WEM	-	-	-	-	-	-	-	-	-	-	-	-
	ET(ME)	20	20	-	20	20	~	-	40	20	40	~	20
	ET(WE)	10	10	-	30	~	20	10	20	~	10	10	10
	ETS	-	-	-	-	-	-	-	-	-	-	-	-
	Unspecified	-	-	-	-	-	-	-	-	-	-	-	-
ESM		20	10	20	30	10	-	20	-	50	~	-	30
	MEM	-	-	-	-	-	-	-	-	-	-	-	-
	WEM	-	-	-	-	-	-	-	-	-	-	-	-
	ET(MESM)	20	~	10	10	-	-	20	-	20	~	-	20
	ET(WESM)	~	10	10	10	10	-	-	-	30	-	-	10
EAE		~	40	40	10	20	10	10	20	20	20	~	20
	AEA	-	-	-	-	-	-	-	-	-	-	-	-
	AEM	-	-	-	-	-	-	-	-	-	-	-	-
	AET	~	40	30	10	20	10	10	20	20	20	~	20
	NA(SE)	-	-	10	-	-	-	-	-	-	-	-	-
	Unspecified	-	-	-	-	-	-	-	-	-	-	-	-
LOGS		20	20	-	20	10	10	20	10	10	20	~	10
	Caterer	-	-	-	-	-	-	-	-	-	-	-	-
	Chef	10	10	-	10	10	-	10	10	10	10	-	~
	Steward	~	~	-	10	-	-	~	-	-	~	-	-
	Supply Chain	-	10	-	~	-	10	-	-	~	10	-	-
	Writer	10	-	-	~	-	-	10	-	-	~	-	10
	Family Service	-	-	-	-	-	-	-	-	-	-	-	-
	Unspecified	-	-	-	-	-	-	-	-	-	-	-	-
MED		10	~	10	10	~	~	-	10	10	10	-	10
	Dental Hyg	-	-	-	-	-	-	-	-	-	-	-	-
	Dental SA	-	-	-	-	-	-	-	-	~	-	-	-
	Med Asst	10	-	10	10	~	~	-	10	10	10	-	~
	Naval Nurse	-	-	-	-	-	-	-	-	~	-	-	10
	Med Techn	-	~	-	~	-	-	-	-	-	-	-	-
	RM Med Asst	-	-	-	-	-	-	-	-	-	-	-	-
	Unspecified	-	-	-	-	-	-	-	-	-	-	-	-
RM GS		40	70	90	20	50	60	-	30	70	100	-	40
RM Band		-	~	-	10	-	-	-	~	-	-	-	20
	Band	-	~	-	~	-	-	-	~	-	-	-	20
	Bugler	-	-	-	10	-	-	-	~	-	-	-	~

13 Trained Intake to the Regular Royal Navy and Royal Marine Service

	2010/2011	2011/2012	2012/2013	2013/2014	12 Months to 1st Oct 14	Actual Sep 14
Total Officers	10	~	10	~	10	-
Warfare	~	~	~	~	~	-
Engineer	-	-	~	~	~	-
Logistics	-	-	~	~	-	-
Medical	~	-	-	~	-	-
Medical Services	-	~	-	-	-	-
QARNNS	-	-	-	-	~	-
Dental	~	-	-	-	-	-
Chaplain	-	-	-	~	~	-
RM GS	~	~	~	~	~	-
RM Band	-	-	-	-	-	-
No Value	-	-	-	-	-	-
Total Ratings	80	40	60	70	50	~
XR	20	20	20	10	10	~
XSM	~	~	-	-	-	-
XAV	~	~	~	~	~	-
EGS	10	~	~	10	~	-
ESM	~	~	-	-	~	-
EAE	~	-	~	10	~	~
LOGS	10	~	~	~	10	-
MED	~	~	~	~	~	~
QARNNS	-	-	-	-	-	-
RM GS	30	10	20	30	20	-
RM Band	~	-	~	~	~	-
No Value	-	-	-	-	-	-

The figures above show trained intake to the regular strength from Civil Life, from Another Service, from LTA,
To Other Ranks from Officer and To Officer from Other Ranks

Oct-14 Edition.