



Skills Funding Agency

Apprenticeship qualification success rates 2012/2013

Producing the dataset and data definitions

Date of issue 17 December 2013

Publication intent NOT PROTECTIVELY MARKED

Contents

Section 1 – Introduction	2
Purpose of document	2
Purpose of success rates	2
Apprenticeship success-rate methodology	2
Apprenticeship business rules	3
Exclusions from Apprenticeship success rates	3
Section 2 – Processing standard files	5
Process flow diagram	5
Identifying Apprenticeship programme aims	6
Processing further-education college mergers	7
Processing learner reference number changes	7
Merging programme aims across years	8
Fields in the success-rates dataset	8
Success-rate calculations	8
Section 3 – Contents of the success-rates dataset for records created from the ILR	10
Source or derivation of fields in the success-rates dataset	10
Section 4 – Contents of the success-rates dataset for records created from the LEOP dataset	16
Source or derivation of fields in the success-rates dataset	16
Data items contained in the LEOP dataset	22
Further information	23

Skills Funding Agency

Cheylesmore House, Quinton Road, Coventry, CV1 2WT

T 0845 377 5000 www.skillsfundingagency.bis.gov.uk

A partner organisation of the Department for Business, Innovation & Skills

Section 1 – Introduction

Purpose of document

1. This document provides technical information about how information provided in Individualised Learner Records, and in Large Employer Outcome Pilot records, is processed to produce the success-rates dataset which the Apprenticeship 2012/2013 qualification success rate and minimum standards reports are produced from. This document also provides information about where the information included in the success rate and minimum standards reports comes from.

Purpose of success rates

2. The Apprenticeship success rate is a measure of the quality of the Apprenticeship programmes that a provider ran in a particular academic year. Success rates are used to identify provision that falls below the minimum quality standards. Provision which falls below the minimum quality standards is one of the factors, as identified in the document 'New Challenges, New Chances' (at www.gov.uk/government/uploads/system/uploads/attachment_data/file/145449/11-1213-new-challenges-new-chances-implementing-further-education-reform.pdf), that will prompt us to take action under our Approach to Intervention process (at readingroom.lsc.gov.uk/SFA/Intervention_Statement.pdf).
3. Success rates are used in FE Choices and National Success Rate Tables to show apprentices and employers the relative quality of provision. The Office for Standards in Education, Children's Services and Skills (Ofsted) also use them as part of their inspection process.

Apprenticeship success-rate methodology

4. The Apprenticeship success-rate methodology has two success-rate measures – the 'overall' success rate and the 'timely' success rate.
5. We use the overall success rate to formally assess whether a provider meets minimum quality standards.
6. The overall success rate is based on the hybrid end year (the actual end year or the planned end year of an Apprenticeship framework, whichever is later). The Apprenticeship frameworks considered for the 2012/2013 overall success rate are those that were either ended or were planned to end in the academic year ending 31st July 2013.
7. The timely success rate is based on the planned end year of an Apprenticeship framework. The Apprenticeship frameworks considered for the 2012/2013 timely success-rate measure are those with a planned end date up to 31st July 2013. In the timely success-rate measure an Apprenticeship framework is counted as achieved if the achievement date is:
 - on or before the planned end date; or
 - up to 90 days after the planned end date.
8. There can be a delay between an Apprenticeship framework being completed and the notification that the Apprenticeship framework has been achieved. To make sure that all achievements that count towards the timely success rate are included, information from return R04 of the 2013/2014 Individualised Learner Record (ILR) is used to identify

frameworks that have been achieved up to 90 days after their planned end date but which could not be recorded in the final return of the 2012/2013 ILR.

Apprenticeship business rules

9. Each year we produce the business rules that describe how the success rates will be calculated, and the Apprenticeship frameworks that will not be included in the success-rate calculations. The Apprenticeship business rules are published on the Data Service website (at www.thedataservice.org.uk/Statistics/success_rates/success_rates_2012-13/).
10. A number of Apprenticeship frameworks are not included when calculating the success rates in order to make the results more credible and appropriate. The main reasons for not including a particular Apprentice framework are that it:
 - would not be fair to the provider (for example, if success rates would be affected by circumstances beyond the provider's control); or
 - relates to an Access to Apprenticeship framework and the learner is not employed.

Exclusions from Apprenticeship success rates

11. The report pack for the success-rate reports includes a file containing the data used in the overall and timely success-rate calculations. This data file only contains programme aims that are used to calculate the success rates.
12. The way that the Apprenticeship frameworks that are not included in the calculations (excluded frameworks) are identified is described below.

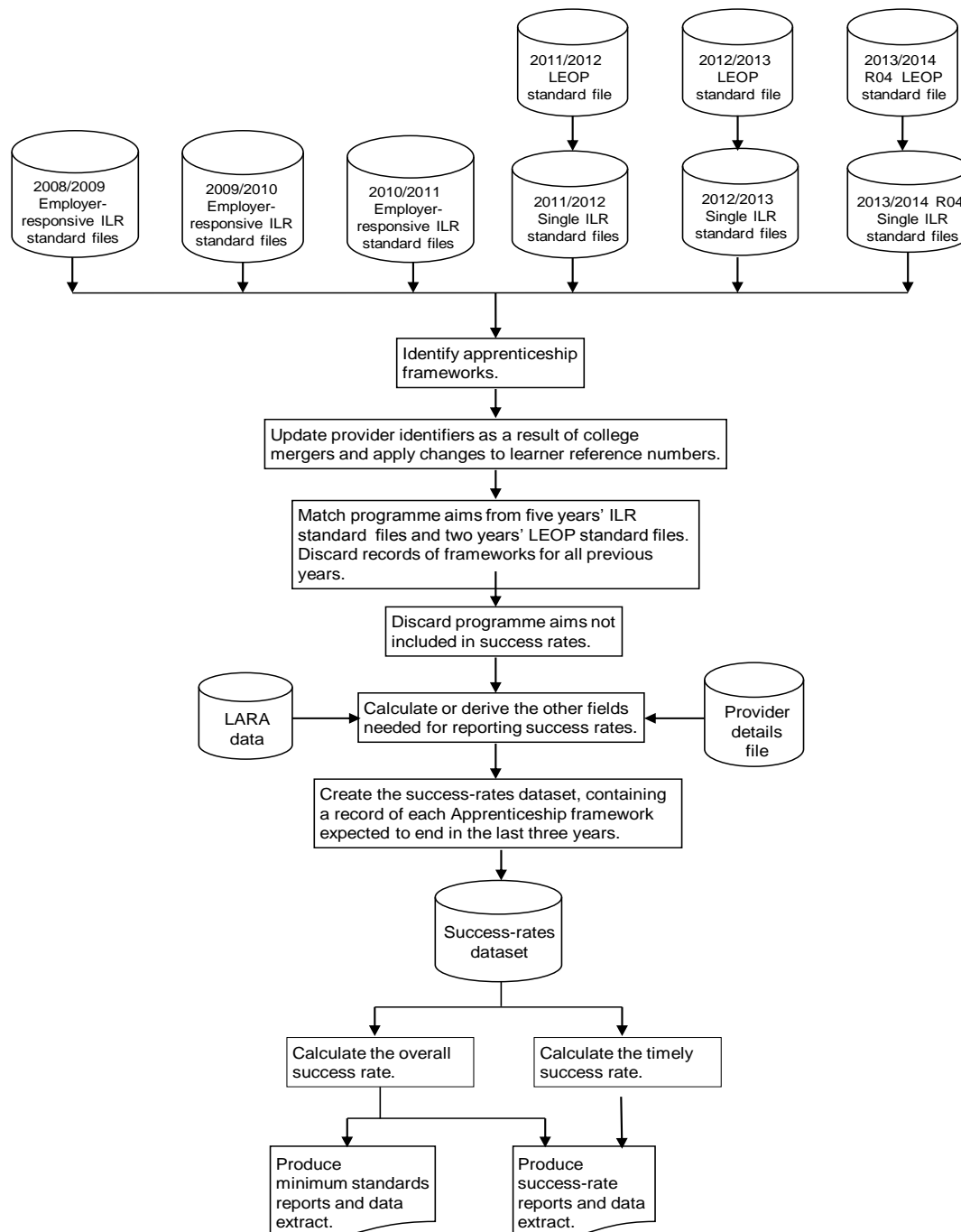
Type of excluded framework	Rules for identifying the excluded framework
Frameworks where an apprentice has transferred to a new provider because of intervention from us or the Education Funding Agency	Programme aims where P_Prog_Status is 10.
For the overall success rate, frameworks where the apprentice has transferred to a different programme with the same provider	Programme aims where P_Prog_Status is 7 or 8 and the Learning Actual End Date (A31) is before 1st August of the relevant year.
For the timely success rate, frameworks where the apprentice has transferred to a different programme with the same provider before the planned end date or no more than 90 days after it	Programme aims where P_Prog_Status is 7 or 8 and the Learning Actual End Date (A31) is on or before the Learning Planned End Date (A28), or no more than 90 days after it.
For the overall success rate, frameworks where the apprentice has temporarily withdrawn from the framework due to an agreed break in learning	Programme aims where P_Prog_Status is 11 or 12.
For the timely success rate, frameworks where the apprentice has temporarily withdrawn from the framework due to an agreed break in learning either before the planned end date or no more than 90 days after it	Programme aims where (P_Prog_Status) is 11 or 12 and the Learning Actual End Date (A31) is on or before the Learning Planned End Date (A28), or no more than 90 days after it.
Frameworks that did not complete the qualifying period of 42 days (six weeks)	Programme aims where the difference between the Learning Start Date (A27) and the Learning Actual End Date (A31) is less than 42 days, and where

Type of excluded framework	Rules for identifying the excluded framework
	P_Prog_Status is not 1.
Frameworks with a planned end date after the last day of the QSR reporting period (31st July 2013)	Programme aims where the Learning Planned End Date (A28) is later than 31st July 2013.
Duplicate framework records for the years before 2010/2011. (Duplicate frameworks have the same provider, apprentice, programme type and framework code.)	<p>The duplicate programme aims are identified by matching the Provider Number (L01), Learner Reference Number (L03), Programme Type (A15) and Framework Code (A26) for aims where the Completion Status (A34) is 1, 2, 3 or 5.</p> <p>The programme aims are sorted into descending order using Learning Aim Data Set Sequence (A05) and only the aim with the highest value is included in the success-rate dataset.</p>
Innovation code frameworks	Programme aims where the Learning Aim Reference (A09) is ZINN0001, ZINN0002, ZINN0003, ZINN0004, ZINN0005 or ZINN0006.
Learners who are on an Access to Apprenticeship scheme but are not employed	Programme aims where the National Learning Aim Monitoring Code (A46a, A46b and A46c) is 127 and A_ATA_EMP is not 1.
Classroom learning provision reported through the employer-responsive funding stream	Programme aims where the National Learning Aim Monitoring Code (A46a, A46b and A46c) is 125.
Learners who are on an Apprenticeship Framework that is not funded by the Skills Funding Agency	Programme aims where the Funding Model (A10) is 99

Section 2 – Processing standard files

Process flow diagram

13. This flow diagram below shows how Individualised Learner Record (ILR) and Large Employer Outcome Pilot (LEOP) information for multiple academic years is processed to produce the success-rates dataset, which is the source of the information used for the success-rate and minimum standards reports.



Identifying Apprenticeship programme aims

14. The method of identifying Apprenticeship programme aims for 2008/2009 to 2010/2011 in the ILR is different to the method for 2011/2012 onwards. This is a result of the employer-responsive ILR collection being replaced with the single ILR for 2011/2012. The employer-responsive collection contained only Apprenticeship programme aims and workplace learning aims, whereas the single ILR also includes classroom learning aims.
15. The method for identifying Apprenticeship programme aims for each academic year in the ILR and LEOP datasets is shown below.

Source and year	Rules for identifying Apprenticeship programme aims
ILRs for 2008/2009, 2009/2010 and 2010/2011	Programme aims where the Data Set Identifier Code (A04) is 35 and the Programme Type (A15) is 2, 3 or 10. (Programme aims for a provider with a UPIN of '110023' and a Learning Start Date (A27) before 1st April 2008 are not included in the success-rates dataset.)
ILR for 2011/2012	Programme aims where: <ul style="list-style-type: none"> the Data Set Identifier Code (A04) is 35; the Programme Type (A15) is 2, 3, 10, 20 or 21; the Learning and Delivery Monitoring Code (A46A, A46B) is not 125 (learner-responsive aim funded through the employer-responsive funding model); the Learning and Delivery Monitoring Code (A46A, A46B) is not 127; and A_ATA_EMP is 0 (Access to Apprenticeship where the learner is not employed).
ILR for 2012/2013	Programme aims where: <ul style="list-style-type: none"> the Data Set Identifier Code (A04) is 35; the Programme Type (A15) is 2, 3, 10, 20 or 21; the Learning and Delivery Monitoring Code (A46A, A46B, A46C) is not 127; and A_ATA_EMP is 0 (Access to Apprenticeship where the learner is not employed).
ILR for 2013/2014	Programme aims where: <ul style="list-style-type: none"> the Aim Type is 1; the Programme Type is 2, 3, 10, 20 or 21; the Learning and Delivery Monitoring Code (LDM1, LDM2, LDM3 or LDM4) is not 127; D_AccToAppEmpd is 0 (Access to Apprenticeship where the learner is not employed); the Learning Start Date is 31st July 2013 or earlier; the Learning Planned End Date is 31st July 2013 or earlier; the Learning Actual End Date is on or before 29th October 2013 (90 days after 31st July 2013); and P_Prog_Status is 1 (framework achieved).
LEOPs for 2011/2012 and 2012/2013	Programme aims where the Aim Type is 1 and the Programme Type (A15) is 2, 3, 10, 20 or 21.
LEOP for 2013/2014	Programme aims where: <ul style="list-style-type: none"> the Aim Type is 1; the Programme Type (A15) is 2, 3, 10, 20 or 21; the Learning Start Date is 31st July 2013 or earlier; the Learning Planned End Date is 31st July 2013 or earlier; the Learning Actual End Date is on or before 29th October 2013 (90

Source and year	Rules for identifying Apprenticeship programme aims
	days after 31th July 2013); and <ul style="list-style-type: none"> • P_Prog_Status is 1 (framework achieved).

Processing further-education college mergers

16. In the year after two further-education colleges merge to form a new college, the success-rate methodology combines the programme aims for both colleges in the previous two years under the new merged college and produces success rates for the new college. This allows the new college to compare their current year's success rate with a comparable success rate for the previous two years.
17. Programme aims are combined by changing the provider numbers (UPIN and UKPRN) of the old colleges to be that of the new college's provider number. The original provider numbers are kept in the success-rates dataset in the L01_orig and L46_orig fields.
18. Note that this merger process only applies to further-education colleges. It does not apply to the mergers of any other types of provider (for example, private training providers).

Processing learner reference number changes

19. As described later, the learner reference number (L03) is used when matching programme aims across years. The learner reference number is assigned by the provider, and providers (or their software) will occasionally change them, either within a year or between years.
20. If the learner reference number is changed, the process of matching programme aims does not work correctly and two records are created in the success-rates dataset for the same programme aim – one using the old learner reference number and one the new learner reference. As the programme aim from the earlier year's ILR file will not have any achievement data, it will reduce the provider's success rate unless this matching issue is addressed.
21. To address this issue, the Data Service introduced the learner reference number mapping spreadsheet (available on the Data Service website (www.thedataservice.org.uk/Statistics/success_rates/l03_change_process.htm)) which allows a provider to cross reference the old and new learner reference numbers.
22. The affected learner reference numbers are changed to those on the learner reference number mapping spreadsheet. The original learner reference number is kept in the success-rates dataset in the L03_orig field.
23. Providers who no longer have a contract with us for 2013/2014 because their previous contract was less than the minimum contract level cannot provide achievement information in R04 of the 2013/2014 ILR return. This can reduce their timely success rate. For affected providers who have become subcontractors, if the prime provider completes a learner reference number mapping spreadsheet identifying those apprentices who were previously studying with the subcontractor, the achievement information present in the prime provider's return R04 is applied to the programme aims of the subcontractor's apprentices.

Merging programme aims across years

24. Many programme aims take more than one year to complete. This means that the same programme aim for a particular apprentice can appear in more than one ILR or LEOP file. Programme aims can be completed earlier than planned, and some programme aims are not marked as completed.
25. As Apprenticeship success rates are based on the programme aim's planned end date, the ILR files from all years have to be merged together in order to identify all the programme aims that are planned to be completed in the years being reported on.
26. The ILR files and the LEOP files for an academic year are combined into a single file before the yearly files are merged.
27. Various combinations of variables are used to make sure that the correct programme aims are matched. The matching process uses Provider Number (L01), Learner Reference Number (L03), Programme Type (A15) and Framework Code (A26) together with the following combinations, in the following sequence.
 - Learning Start Date (A27), Learning Planned End Date (A28) and Achievement Date (A40)
 - Learning Start Date (A27) and Learning Planned End Date (A28)
 - Learning Start Date (A27) and Achievement Date (A40)
 - Learning Start Date (A27)
28. Once programme-aim records have been matched, those from previous years are discarded, leaving just the latest information of the programme aim in the success-rates dataset.

Fields in the success-rates dataset

29. A number of the fields on the success-rates dataset come directly from the ILR and LEOP files. The other fields are either derived or calculated. Sections 3 and 4 give full details of the source, derivation or calculation of the fields on the success-rates dataset.
30. Two reference files are used in some of the derivations
 - a) The 2012/2013 Framework lookup file. This file holds programme-aim data from the Learning Aims Reference Application (LARA) and the Learning Aims Database (LAD), and holds the aim's information as at the 'hard close' of the 2012/2013 ILR (25th October 2013).
 - b) The 2012/2013 Provider Details file. This file holds provider details from the Provider and Organisation Information Management System (PIMS), and holds the provider's information as at 31st July 2013.

Success-rate calculations

31. The main fields from the success-rates dataset that are used in calculating the overall success rates are as follows.
 - Hybrid End Year (P_Hybridendyr).
This field is the actual learning end year (P_Actendyr) or the expected learning end year (P_Expendyr), whichever is later.

- P_Frm_Ach_Overall
This field is used in the overall success-rate calculation and indicates whether a programme aim has been achieved.
- P_Count_Overall
This field is used in the overall success-rate calculation and indicates whether the programme aim has been completed.

32. For a given academic year the overall qualification success-rate percentage is calculated as follows.

$$\frac{\text{Number of programmes that have been achieved at any time}}{\text{Number of programmes that have finished}} \times 100$$

In terms of the variables on the success-rates dataset, for a given hybrid end year (P_Hybridendyr) the overall qualification success-rate percentage is calculated as follows.

$$\frac{\text{The number of programme aims where P_Frm_Ach_Overall is 1}}{\text{The number of programme aims where P_Count_Overall is 1}} \times 100$$

33. The main fields from the success-rate dataset that are used in calculating the timely success rate are as follows.

- The Expected End Year (P_Expendyr)
This field is the first calendar year of the academic period the Learning Planned End Date (A28) falls in. For example, if the Learning Planned End Date falls within the 2012/2013 academic year, P_Expendyr is '2012'.
- P_Frm_Ach_Timely
This field is used in the timely success-rate calculation and indicates whether a programme aim has been achieved.
- P_Count_Timely
This field is used in the timely success-rate calculation and indicates whether the programme aim was expected to be completed in a particular academic year.

34. For a given academic year the overall qualification success-rate percentage is calculated as follows.

$$\frac{\text{Number of programmes that have been achieved by their planned end date or within 90 days after it}}{\text{Number of programmes expected to be finished}} \times 100$$

In terms of the variables on the success-rates dataset, for a given expected end year (P_Expendyr) the overall qualification success-rate percentage is calculated as follows.

$$\frac{\text{The number of programme aims where P_Frm_Ach_Timely is 1}}{\text{The number of programme aims where P_Count_Timely is 1}} \times 100$$

Section 3 – Contents of the success-rates dataset for records created from the ILR

Source or derivation of fields in the success-rates dataset

Data item	Description	Data values	Source (ILR)	Derivation
A_Agest	The age of the apprentice on the start date of the programme aim		ILR standard files	Set to the value of the ILR-derived variable A_Agest .
A_Agestb	A banding of the apprentice's age on the start date of the programme aim		ILR standard files	Set to the value of the ILR-derived variable A_Agestb .
A_SSA_T1	Sector subject area – the broad (tier 1) classification of the subject of the programme aim		Derived	Set to SSA_tier1_code from the framework lookup.
A_SSA_T2	The more specialised classification (tier 2) of the subject of the programme aim		Derived	Set to SSA_tier2_code from the framework lookup.
A15	Programme type		ILR standard files	Set to Programme Type (A15).
A23	Postcode of the delivery location		ILR standard files	Set to Delivery Location Postcode (A23).
A26	Framework code		ILR standard files	Set to Framework Code (A26).
A27	Learning start date (DDMMYYYY)		ILR standard files	Set to Learning Start Date (A27).
A28	Learning planned end date (DDMMYYYY)		ILR standard files	Set to Learning Planned End Date (A28).
A31	Learning actual end date (DDMMYYYY)		ILR standard files	Set to Learning Actual End Date (A31).
A34	The completion status of the programme aim		ILR standard files	Set to Completion Status (A34).
A35	The learning outcome of the programme aim		ILR standard files	Set to Outcome Indicator (A35).
A40	Achievement date (DDMMYYYY)		ILR standard files	Set to Achievement Date (A40).
A44	Employer identifier		ILR standard files	Set to Employer Identifier (A44).
A46A	National learner monitoring – A		ILR standard files	For ILR files for 2008/2009 to 2010/2011, set to National Learning Monitoring Code A (A46A). For ILR files for 2011/2012 onwards, set to the first Learning Delivery Funding and Monitoring Code where the Learning Delivery Funding and Monitoring Type is 'LDM'.
A46B	National learner monitoring – B		ILR standard files	For ILR files for 2008/2009 to 2010/2011, set to National Learning Monitoring Code B (A46B). For ILR files for 2011/2012 onwards, set to the second

Data item	Description	Data values	Source (ILR)	Derivation
				Learning Delivery Funding and Monitoring Code where the Learning Delivery Funding and Monitoring Type is 'LDM'.
A46C	National learner monitoring – C		ILR standard files	For ILR files for 2008/2009 to 2010/2011, set to National Learning Monitoring Code C (A46C). For ILR files for 2012/2013 onwards, set to the third Learning Delivery Funding and Monitoring Code where the Learning Delivery Funding and Monitoring Type is 'LDM'.
Age_Band	A banding of the age on the start of the Apprenticeship programme	1 = 16 to 18 2 = 19 to 24 3 = 25 or more	Derived	Set to 1 if A_Agestb is 1 or 2. Set to 2 if A_Agestb is 3 or 4. Set to 3 if A_Agestb is any other value.
A_Total_Payment	This is the total of all payments made to the provider over the life of the programme aim. (Note: it is the learning aims that make up an Apprenticeship framework that hold the funding information. There is no funding information held on the programme aim.)		Derived	Enter the sum of the ILR-derived variable A_Total_Payment_Y2D for each of the programme aims that make up the Apprenticeship framework, for the years that the programme aim is present on the ILR.
Datasource	The source of the record on the success-rates dataset, which is either the ILR or the LEOP dataset	ILR	Derived	Set to 'ILR'.
Funded	Identifies whether an Apprenticeship has ever received funding from us	0 or 1	Derived	Set to 1 if the Funding Model (A10) is not 99 in any year. Otherwise set to 0.
IA_Return	The ILR return which the success-rates data is from	14	Derived	Set to 14.
L01	Provider UPIN	(For example, 105000)	ILR standard files	For ILR files for 2008/2009 to 2010/2011, set to Provider Number (L01). For ILR files for 2011/2012 onwards, set to UPIN from the PIMS that corresponds to the UK Provider Reference Number .
L01_Orig	The UPIN of the programme aim before the college merger process was applied to a provider's data		Derived	See paragraphs 16 to 18 for information on setting this field.
L03	Learner reference number		ILR standard files	Set to Learner Reference Number (L03).
L03_Orig	The learner reference number of the programme aim before the college merger process was applied to a provider's data		Derived	See paragraphs 16 to 18 for information on setting this field.
L11	The apprentice's date of birth		ILR standard files	Set to Date of Birth (L11).

Data item	Description	Data values	Source (ILR)	Derivation
L12	The apprentice's ethnic background		ILR standard files	Set to Ethnicity (L12).
L13	The apprentice's sex		ILR standard files	Set to Sex (L13).
L14	Indicates whether the apprentice considers that they have a learning difficulty, disability or health problem		ILR standard files	Set to LLDD and Health Problem (L14).
L15	The apprentice's disability		ILR standard files	For ILR files for 2008/2009 to 2010/2011, set to Disability (L15). For ILR files for 2011/2012 onwards, set to LLDD and Health Problem Code where the LLDD and Health Problem Type is 'DS'.
L16	The apprentice's learning difficulty		ILR standard files	For ILR files for 2008/2009 to 2010/2011, set to Learning Difficulty (L16). For ILR files for 2011/2012 onwards, set to LLDD and Health Problem Code where the LLDD and Health Problem Type is 'LD'.
L17	The apprentice's home postcode		ILR standard files	For ILR files for 2008/2009 to 2010/2011, set to Home Postcode (L17). For ILR files for 2011/2012 onwards, set to Postcode where Locator Type equals 2 and Contact Type is 1.
L46	UK provider reference number (UKPRN)		ILR standard files	Set to UK Provider Reference Number (L46).
P_Actendyr	The actual end year of the programme aim (20_ _)		Derived	Set to the first calendar year of the academic period the Learning Actual End Date (A31) falls in. (For example, if the Learning Actual End Date falls in the 2010/2011 academic year, set P_Actendyr to 2010.)
P_Count_Overall	Indicates whether the record should be counted towards the overall success rate	0 or 1	Derived	Set to 1 if: <ul style="list-style-type: none"> • Learning Actual End Date (A31) is present; • P_Trans_Overall is 0; • P_Plan_Break_Overall is 0; and • P_Hybridendyr is in the past 3 years. Otherwise set to 0.
P_Count_Timely	Indicates whether the record should be counted towards the timely success rate	0 or 1	Derived	Set to 1 if: <ul style="list-style-type: none"> • P_Trans_Timely is 0; • P_Plan_Break_Timely is 0; and • P_Expendyr is in the past 3 years.

Data item	Description	Data values	Source (ILR)	Derivation
				Otherwise set to 0.
P_Expendyr	The expected end year of the programme aim (20_ _)		Derived	Set to the first calendar year of the academic period the Learning Planned End Date (A28) falls in. (For example, if the Learning Planned End Date falls in the 2012/2013 academic year, set P_Expendyr to 2012.)
P_Frm_Ach_Overall	For the overall success-rate measure – indicates whether the programme aim has been achieved	0 or 1	Derived	Set to 1 if: <ul style="list-style-type: none"> • P_Prog_Status is 1 (achieved); and • the Learning Actual End Date (A31) is before the end of the overall period (p_period_end_overall). Otherwise set to 0.
P_Frm_Ach_Timely	For the timely success-rate measure – indicates whether the programme aim has been achieved	0 or 1	Derived	Set to 1 if: <ul style="list-style-type: none"> • P_Prog_Status is 1 (achieved); • the Learning Actual End Date (A31) is before the end of the timely period (p_period_end_timely); and • the Learning Actual End Date (A31) is on or before the Learning Planned End Date (A28), or no more than 90 days after it. Otherwise set to 0.
P_Hybridendyr	The hybrid end year of the programme aim (20_ _)		Derived	Set to: <ul style="list-style-type: none"> • the actual learning end year (P_Actendyr); or • the expected learning end year (P_Expendyr); whichever is higher.
P_In_0809	The programme aim is in the dataset for 2008/2009 dataset	0 or 1	Derived	Set to 1 if the aim is taken from the 2008/2009 ILR. Otherwise set to 0.
P_In_0910	The programme aim is in the dataset for 2009/2010	0 or 1	Derived	Set to 1 if the aim is taken from the 2009/2010 ILR. Otherwise set to 0.
P_In_1011	The programme aim is in the dataset for 2010/2011	0 or 1	Derived	Set to 1 if the aim is taken from the 2010/2011 ILR. Otherwise set to 0.
P_In_1112	The programme aim is in the dataset for 2011/2012	0 or 1	Derived	Set to 1 if the aim is taken from the 2011/2012 ILR. Otherwise set to 0.

Data item	Description	Data values	Source (ILR)	Derivation
P_In_1213	The programme aim is in the dataset for 2012/2013	0 or 1	Derived	Set to 1 if the aim is taken from the 2012/2013 ILR. Otherwise set to 0.
P_Period_End_Overall	Last day of the overall reporting period (DDMMYYYY)		Derived	Set to the last day of the overall reporting period. (For example, if the reporting period for the overall success rate for 2012/2013 is return 14, set P_Period_End_Overall to 31/07/2013.)
P_Period_End_Timely	Last day of the timely reporting period (DDMMYYYY)		Derived	Set to the last day of the timely reporting period. (For example, if the reporting period for the timely success rate for 2012/2013 is return 14, set P_Period_End_Timely to 31/07/2013.)
P_Plan_Break_Overall	For the overall success-rate measure – indicates whether the apprentice is on a planned break	0 or 1	Derived	Set to 1 if: <ul style="list-style-type: none"> • P_Prog_Status is 11 or 12; and • the Learning Actual End Date (A31) is before the end of the overall period (P_Period_End_Overall). Otherwise set to 0.
P_Plan_Break_Timely	For the timely success-rate measure – indicates whether the apprentice is on a planned break	0 or 1	Derived	Set to 1 if: <ul style="list-style-type: none"> • P_Prog_Status is 11 or 12; • the Learning Actual End Date (A31) is before the end of the timely period (p_period_end_timely); and • the Learning Actual End Date (A31) is on or before the Learning Planned End Date (A28), or no more than 90 days after it. Otherwise set to 0.
P_Prog_Status	The status of the programme aim		ILR standard files	Set to the value of the ILR-derived variable P_Prog_Status .
P_Startyr	The start year of the programme aim (20_ _)		Derived	Set to the first calendar year of the academic period the Learning Start Date (A27) falls in. (For example, if the Learning Start Date falls in the 2009/2010 academic year, set P_Startyr to 2009.)
P_Trans_Overall	For the overall success-rate measure – indicates whether an apprentice has transferred to another programme	0 or 1	Derived	Set to 1 if: <ul style="list-style-type: none"> • P_Prog_Status is 7, 8 or 10; and • the Learning Actual End Date (A31) is before the end of the overall period (P_Period_End_Overall). Otherwise set to 0.

Data item	Description	Data values	Source (ILR)	Derivation
P_Trans_Timely	For the timely success-rate measure – indicates whether an apprentice has transferred to another programme	0 or 1	Derived	Set to 1 if: <ul style="list-style-type: none"> • P_Prog_Status is 7, 8 or 10; • the Learning Actual End Date (A31) is before the end of the timely period (p_period_end_timely); and • the Learning Actual End Date (A31) is on or before the Learning Planned End Date (A28), or no more than 90 days after it. Otherwise set to 0.
Prv_Name	Provider's name		ILR 2012/2013 provider-details file	Obtain from the ILR 2012/2013 provider-details file.
Prv_Type	Type of provider		ILR 2012/2013 provider-details file	Obtain from the ILR 2012/2013 provider-details file.
Pst_LEA	The local authority for the delivery location (A23)		ILR 2012/2013 provider-details file	Obtain from the ILR 2012/2013 provider-details file.
ULN	Unique learner number		ILR standard files	Set to Unique Learner Number (L45).

Section 4 – Contents of the success-rates dataset for records created from the LEOP dataset

Source or derivation of fields in the success-rates dataset

Data item	Description	Data values	Source (LEOP)	Derivation
A_Agest	The age of the apprentice on the start date of the programme aim		LEOP standard files	Set to A_Agest .
A_Agestb	A banding of the apprentice's age on the start date of the programme aim		Derived	Set to 1 if A_Agest is 0 to 15. Set to 2 if A_Agest is 16 to 18. Set to 3 if A_Agest is 19 to 20. Set to 4 if A_Agest is 21 to 24. Set to 5 if A_Agest is 25 to 59. Set to 6 if A_Agest is 60 to 120. Set to 9 if A_Agest is any other value.
A_SSA_T1	Sector subject area – the broad (tier 1) classification of the subject of the programme aim		Derived	Set to SSA_tier1_code from the framework lookup.
A_SSA_T2	The more specialised classification (tier 2) of the subject of the programme aim		Derived	Set to SSA_tier2_code from the framework lookup.
A15	Type of programme		LEOP standard files	Set to Programme Type .
A23	Postcode of the delivery location		LEOP standard files	Set to Delivery Location Postcode .
A26	Framework code		LEOP standard files	Set to Framework Code .
A27	Learning start date (DDMMYYYY)		LEOP standard files	Set to Learning Start Date .
A28	Learning planned end date (DDMMYYYY)		LEOP standard files	Set to Learning Planned End Date .
A31	Learning actual end date (DDMMYYYY)		LEOP standard files	Set to Learning Actual End Date .
A34	The completion status of the programme aim		LEOP standard files	Set to Completion Status .
A35	The learning outcome of the programme aim		LEOP standard files	Set to Outcome Indicator .
A40	Achievement date	Not populated	–	–
A44	Employer identifier	Not populated	–	–

Data item	Description	Data values	Source (LEOP)	Derivation
A46A	National learner monitoring – A	Not populated	–	–
A46B	National learner monitoring – B	Not populated	–	–
A46C	National learner monitoring – C	Not populated	–	–
Age_Band	A banding of the apprentice's age at the start of the Apprenticeship programme	1 = 16 to 18 2 = 19 to 24 3 = 25 or more	Derived	Set to 1 if A_Agestb is 1 or 2. Set to 2 if A_Agestb is 3 or 4. Set to 3 if A_Agestb is any other value.
A_Total_Payment	The total funding a provider could potentially receive	Not populated	–	–
Datasource	The source of the record on the success-rates dataset, which is either the ILR or the LEOP	LEOP	Derived	Set to LEOP.
Funded	Identifies whether an Apprenticeship has ever received funding from us	Not populated	–	–
IA_Return	The ILR return the success-rates data is from	14	Derived	Set to 14.
L01	Provider number		ILR 2012/2013 provider-details file	Look up from PIMS using the UKPRN .
L01_Orig	The UPIN of the programme aim before the college merger process was applied to a provider's data		Derived	Set to the L01 value.
L03	Learner reference number		Derived	Look up from the Learning Records Service using the ULN .
L03_Orig	The learner reference number of the programme aim before the college merger process was applied to a provider's data		Derived	Set to the L03 value.
L11	The apprentice's date of birth		LEOP standard files	Set to Date of Birth .
L12	The apprentice's ethnic background		LEOP standard files	Set to Learner Ethnicity .
L13	The apprentice's sex		LEOP standard files	Set to Gender .
L14	Indicates whether the apprentice considers that they have a learning difficulty, disability or health problem		LEOP standard files	Set to LLD and Health Problem Indicator .
L15	The apprentice's disability	Not populated	–	–
L16	The apprentice's learning difficulty	Not populated	–	–
L17	The apprentice's home postcode		LEOP standard	Set to Learner Home Postcode .

Data item	Description	Data values	Source (LEOP)	Derivation
			files	
L46	UK provider reference number (UKPRN)		LEOP standard files	Set to UKPRN .
P_Actendyr	The actual end year of the programme aim (20__)		Derived	Set to the first calendar year of the academic period the Learning Actual End Date falls in. (For example, if the Learning Actual End Date falls in the 2010/2011 academic year, set P_Actendyr to 2010.)
P_Count_Overall	Indicates whether the record should be counted towards the overall success rate	0 or 1	Derived	Set to 1 if; <ul style="list-style-type: none"> • Learning Actual End Date is present; • P_Trans_Overall is 0; • P_Plan_Break_Overall is 0; and • P_Hybridendyr is in the past 2 years. Otherwise set to 0.
P_Count_Timely	Indicates whether the record should be counted towards the timely success rate	0 or 1	Derived	Set to 1 if; <ul style="list-style-type: none"> • P_Trans_Timely is 0; • P_Plan_Break_Timely is 0; and • P_Expendyr is in the past 2 years. Otherwise set to 0.
P_Expendyr	The expected end year of the programme aim (20__)		Derived	Set to the first calendar year of the academic period the Learning Planned End Date falls in. (For example, if the Learning Planned End Date falls in the 2012/2013 academic year, set P_Expendyr to 2012.)
P_Frm_Ach_Overall	For the overall success-rate measure – indicates whether the apprentice has achieved the framework	0 or 1	Derived	Set to 1 if: <ul style="list-style-type: none"> • P_Prog_Status is 1 (achieved); and • the Learning Actual End Date is before the end of the overall period (p_period_end_overall). Otherwise set to 0.
P_Frm_Ach_Timely	For the timely success-rate measure – indicates whether the apprentice has achieved the framework	0 or 1	Derived	Set to 1 if; <ul style="list-style-type: none"> • P_Prog_Status is 1 (achieved); • the Learning Actual End Date is before the end of the timely period (p_period_end_timely); and • the Learning Actual End Date is on or before the Learning Planned End Date, or no more than 90 days after it.

Data item	Description	Data values	Source (LEOP)	Derivation
				Otherwise set to 0.
P_Hybridendyr	The hybrid end year of the programme aim (20_ _)		Derived	Set to: <ul style="list-style-type: none"> the actual learning end year (P_Actendyr); or the expected learning end year (P_Expendyr); whichever is higher.
P_In_0809	The programme aim is in the dataset for 2008/2009	0	Derived	Set to 0.
P_In_0910	The programme aim is in the dataset for 2009/2010	0	Derived	Set to 0.
P_In_1011	The programme aim is in the dataset for 2010/2011	0	Derived	Set to 0.
P_In_1112	The programme aim is in the dataset for 2011/2012	0 or 1	Derived	Set to 1 if the programme aim is taken from the 2011/2012 LEOP dataset. Otherwise set to 0.
P_In_1213	The programme aim is in the dataset for 2012/2013	0 or 1	Derived	Set to 1 if the programme aim is taken from the 2012/2013 LEOP dataset. Otherwise set to 0.
P_Period_End_Overall	Last day of the overall reporting period (DDMMYYYY)		Derived	Set to the last day of the overall reporting period. (For example, if the reporting period for the overall success rate for 2012/2013 is return 14, set P_Period_End_Overall to 31/07/2013.)
P_Period_End_Timely	Last day of the timely reporting period (DDMMYYYY)		Derived	Set to the last day of the timely reporting period. (For example, if the reporting period for the timely success rate for 2012/2013 is return 14, set P_Period_End_Timely to 31/07/2013.)
P_Plan_Break_Overall	For the overall success-rate measure – Indicates whether the apprentice is on a planned break	0 or 1	Derived	Set to 1 if: <ul style="list-style-type: none"> P_Prog_Status is 11 or 12; and the Learning Actual End Date is before the end of the overall period (P_Period_End_Overall). Otherwise set to 0.
P_Plan_Break_Timely	For the timely success-rate measure – indicates whether the apprentice is on a planned break	0 or 1	Derived	Set to 1 if; <ul style="list-style-type: none"> P_Prog_Status is 11 or 12; the Learning Actual End Date is before the end of the

Data item	Description	Data values	Source (LEOP)	Derivation
				<p>timely period (p_period_end_timely); and</p> <ul style="list-style-type: none"> the Learning Actual End Date is on or before the Learning Planned End Date, or no more than 90 days after it. <p>Otherwise set to 0.</p>
P_Prog_Status	The status of the programme aim		Derived	<p>If the Learning Actual End Date is not present, set P_Prog_Status to 0 (continuing).</p> <p>If the Learning Actual End Date is present and the Learning Outcome is 1, set P_Prog_Status to 1 (achieved).</p> <p>If the Completion Status is 6, set P_Prog_Status to 11 (apprentice is taking a planned break from learning).</p> <p>If the Completion Status is 4 or 5, set P_Prog_Status to 8 (transfer to a new programme at the same provider).</p> <p>If none of the above apply, set P_Prog_Status to 6 (no achievement).</p> <p>(Note: as the LEOP dataset does not include a 'Reason Learning Ended' P_Prog_Status, values of 9 (transfer to new provider) and 10 (transfer to a new provider after SFA or EFA intervention) cannot be determined.</p>
P_Startyr	The start year of the programme aim (20__)		Derived	<p>Set to the value of the first calendar year of the academic period the Learning Start Date falls in. (For example, if the Learning Start Date falls in the 2009/2010 academic year, set P_Startyr to 2009.)</p>
P_Trans_Overall	For the overall success-rate measure – indicates whether an apprentice has transferred to another programme	0 or 1	Derived	<p>Set to 1 if:</p> <ul style="list-style-type: none"> P_Prog_Status is 7, 8 or 10; and the Learning Actual End Date is before the end of the overall period (P_Period_End_Overall). <p>Otherwise set to 0.</p>
P_Trans_Timely	For the timely success-rate measure – indicates whether an apprentice has transferred to another programme	0 or 1	Derived	<p>Set to 1 if:</p> <ul style="list-style-type: none"> P_Prog_Status is 7, 8 or 10; the Learning Actual End Date is before the end of the timely period (p_period_end_timely); and the Learning Actual End Date is on or before the

Data item	Description	Data values	Source (LEOP)	Derivation
				Learning Planned End Date , or no more than 90 days after it. Otherwise set to 0.
Prv_Name	Provider's name		ILR 2012/2013 provider-details file	Obtain from the ILR 2012/2013 provider-details file.
Prv_Type	Type of provider		ILR 2012/2013 provider-details file	Obtain from the ILR 2012/2013 provider-details file.
Pst_LEA	The local authority for the delivery location		ILR 2012/2013 provider-details file	Obtain from the ILR 2012/2013 provider-details file.
ULN	Unique learner number (ULN)		LEOP standard files	Set to ULN .

Data items contained in the LEOP dataset

42. This section lists the data items which are supplied by employers in the Large Employer Outcome Pilot dataset, or which are obtained from the Learning Records Service. It also lists selected derived variables calculated for the dataset which are used in the derivation of some of the fields on the success-rates dataset. These derived variables are calculated using the same method as for the ILR. Section 4 describes how success-rate dataset records are created from the data items in the LEOP dataset.

Field	Source	Notes
UKPRN	Employer's data file	
ULN	Employer's data file	Unique learner number
Family name	Employer's data file	
First name	Employer's data file	
Date of Birth	Learning Records Service	Looked up from the Learning Records Service using ULN, first name and family name.
Gender	Learning Records Service	Looked up from the Learning Records Service using ULN, first name and family name.
Learner Home Postcode	Learning Records Service	Looked up from the Learning Records Service using ULN, first name and family name.
Learner Ethnicity	Employer's data file	ILR 2012/2013 codes (codes based on the 2012 census) are used.
Learning Aim Reference	Employer's data file	A valid learning aim reference in LARA.
Aim Type	Employer's data file	ILR 2012/2013 codes used 1 – Programme aim 2 – Main learning aim within an Apprenticeship programme 3 – Component learning aim within a programme 4 – Learning aim that is not part of a programme
Programme Type	Employer's data file	ILR 2012/2013 codes are used.
Framework Code	Employer's data file	A valid framework code in LARA.
Learning Start Date	Employer's data file	
Learning Planned End Date	Employer's data file	
Learning Actual End Date	Employer's data file	
Completion Status	Employer's data file	ILR 2012/2013 codes are used.
Outcome Indicator	Employer's data file	ILR 2012/2013 codes are used.
Proportion of Funding Remaining	Employer's data file	A value between 1 and 100 to indicate the percentage of funding for apprentices who are not entitled to full funding for the framework or programme aim.
LDD and Health Problem Indicator	Employer's data file	ILR 2012/2013 codes are used.
Delivery Location Postcode	Employer's data file	The rules specified for the 2012/2013 ILR are applied.
A_AGEST	Derived variable	
A_LEAVE_ACM	Derived variable	
A_SSA_T1	Derived variable	
A_SSA_T2	Derived variable	

Further information

43. The Data Service is responsible for producing the success-rate dataset in line with the methodology approved by us and the Education Funding Agency.

44. If you need more information, you can phone the Data Service on 0870 267 0001 or email servicedesk@thedata-service.org.uk. Please provide a detailed explanation of your query.

Author	Skills Funding Agency
Date created	17 December 2013
Document ref.	Apprenticeship QSR Data Set Production and Data Definition
Version	1.2

