

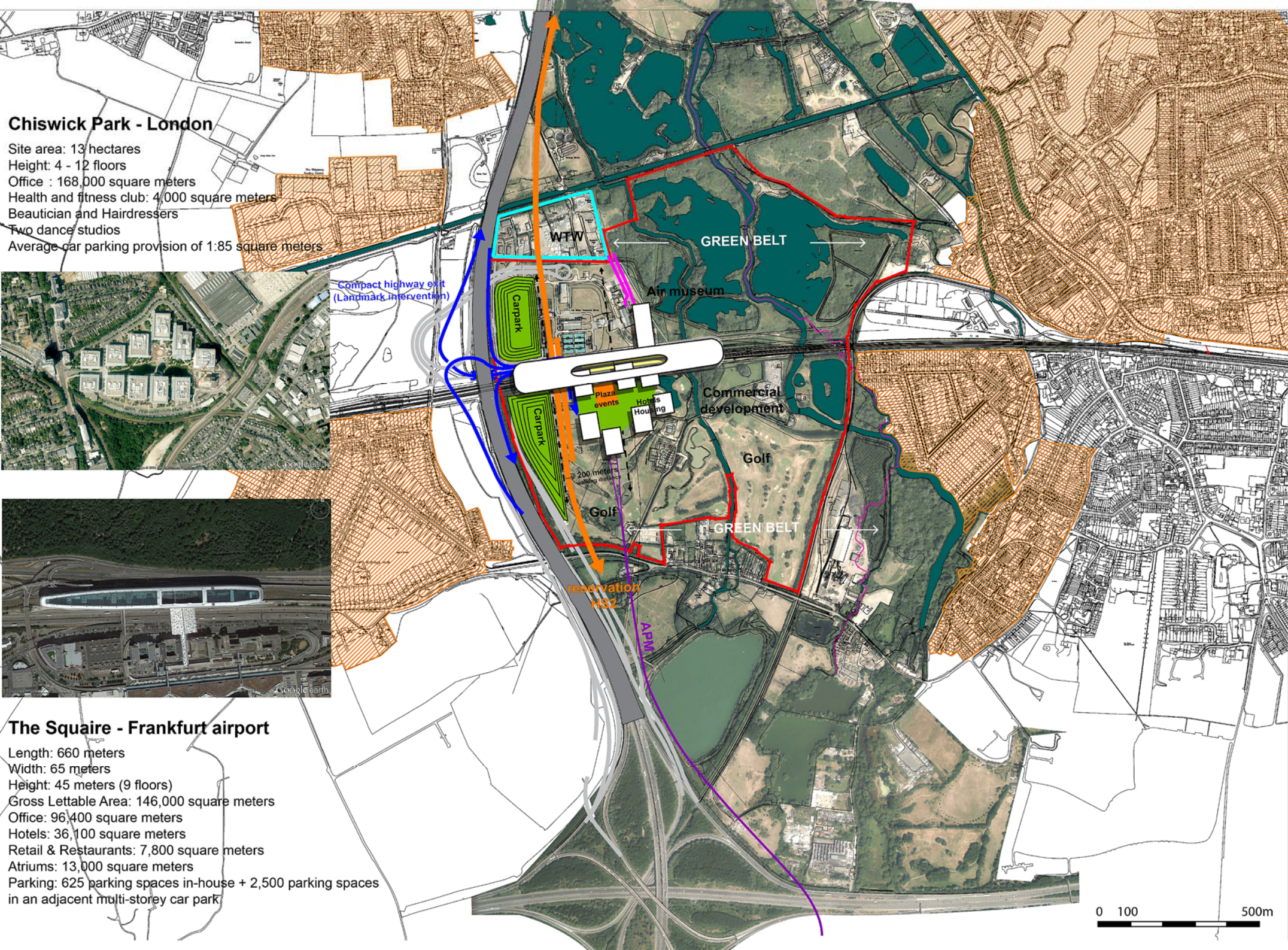
## Chiswick Park - London

Site area: 13 hectares  
 Height: 4 - 12 floors  
 Office : 168,000 square meters  
 Health and fitness club: 4,000 square meters  
 Beautician and Hairdressers  
 Two dance studios  
 Average car parking provision of 1.85 square meters



## The Squire - Frankfurt airport

Length: 660 meters  
 Width: 65 meters  
 Height: 45 meters (9 floors)  
 Gross Lettable Area: 146,000 square meters  
 Office: 96,400 square meters  
 Hotels: 36,100 square meters  
 Retail & Restaurants: 7,800 square meters  
 Atriums: 13,000 square meters  
 Parking: 625 parking spaces in-house + 2,500 parking spaces in an adjacent multi-storey car park





## MAC Center - Munich airport

Programme: 35,000 square meters (offices, a medical and conference centre and shops, restaurants, cafés, bars and service facilities)

Central open space: MAC Forum (10,000 square meters in size and 40 metres high, covered by a unique glass membrane roof, which is the largest covered open space in Europe)

Parking: Airport parking silo on the vicinity



## World Trade Center - Amsterdam airport

Hybrid building complex (hotel + offices with facilities on top of parking silo)

Programme: 96,500 square meters of offices and related services (private service point, central reception, banking, postal delivery point, copy service, office shop, several travel agencies and a Business & Conference Center with extensive meeting facilities and hotels)

Parking: 1,100 parking places directly under the building

Compact highway exit  
(Landmark intervention)

WTW

GREEN BELT

Air museum

Roof Station

Commercial development

Golf

GREEN BELT

reservation  
HS2

APM

0 100 500m



## Chassé Park - The Netherlands

Site Size: 12.9 hectares  
 Offices: 31,000 square meters  
 Retail/Hotel: 8,000 square meters  
 Residential units: 700  
 Parking: 1,500 parking spaces (underground)



## The Circle - Zurich airport

Footprint: 37,000 square meters  
 Useable area: 180,000 square meters  
 Offices: 90,000 square meters  
 Hotel and events: 45,000 square meters  
 Parking: 20,000 square meters  
 Opening Planned: 2018

Compact highway exit  
 (Landmark intervention)

WTW

GREEN BELT

Air museum

Carpark

Plaza events

Commercial development

campus

Golf

GREEN BELT

reservation HS2

AP16

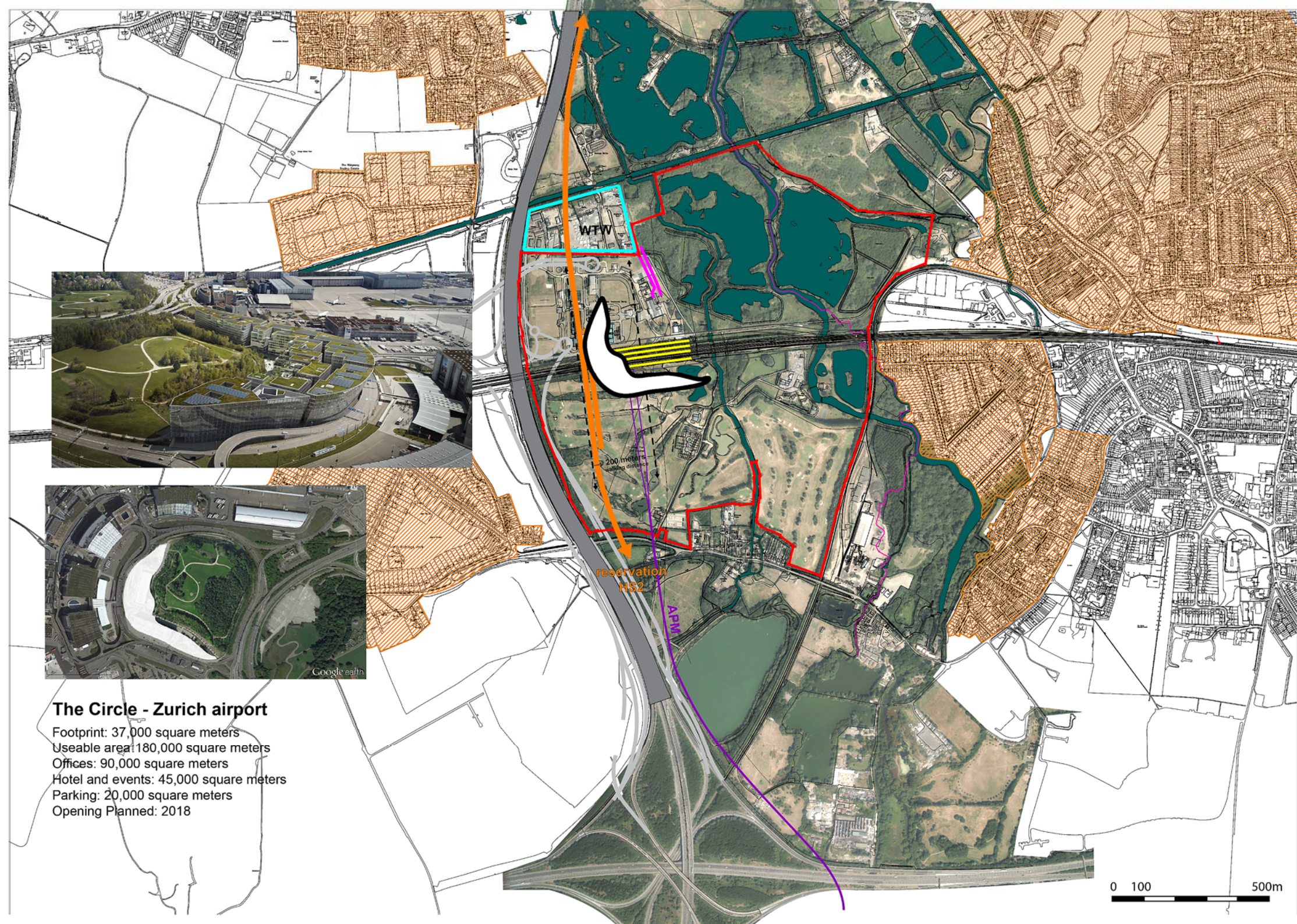
0 100 500m





## The Circle - Zurich airport

Footprint: 37,000 square meters  
 Useable area: 180,000 square meters  
 Offices: 90,000 square meters  
 Hotel and events: 45,000 square meters  
 Parking: 20,000 square meters  
 Opening Planned: 2018







## The Square - Frankfurt airport

Length: 660 meters

Width: 65 meters

Height: 45 meters (9 floors)

Gross Lettable Area: 146,000 square meters

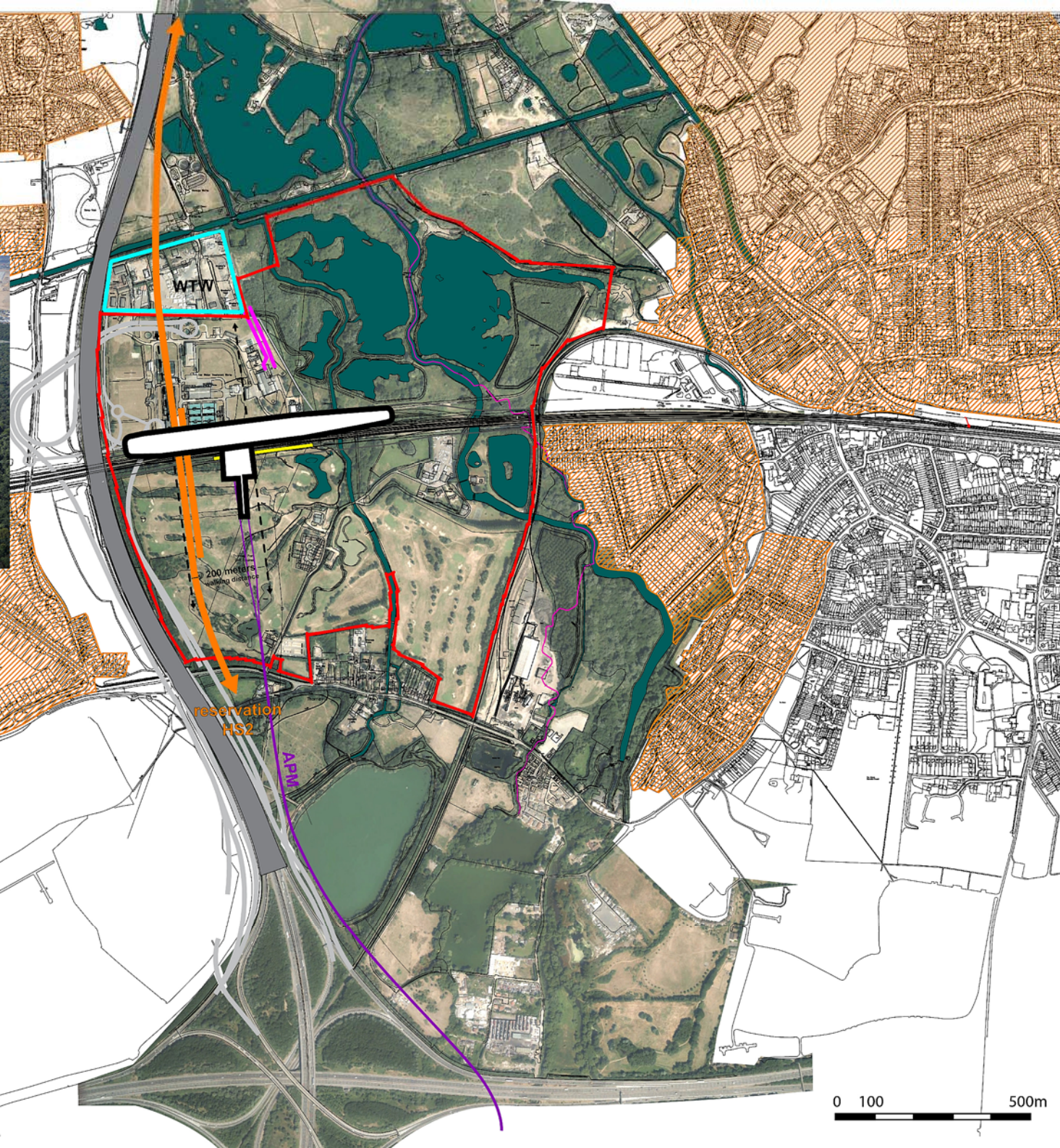
Office : 96,400 square meters

Hotels: 36,100 square meters

Retail & Restaurants: 7,800 square meters

Atriums: 13,000 square meters

Parking: 625 parking spaces in-house + 2,500 parking spaces in an adjacent multi-storey car park







Berlin Hauptbahnhof / Central Station

Compact highway exit  
(Landmark intervention)

WTW

Carpark

Carpark

reservation  
HS2

APM

0 100 500m