

# First Release

16<sup>th</sup> July 2014  
IGS160714SSJUL14

Coverage: Great Britain (unless otherwise stated)

Theme: People and Places



**Department  
for Work &  
Pensions**

**Issued by:**  
Information, Governance and  
Security Directorate  
Department for Work and  
Pensions

Telephone:  
Press Office: 0203 267 5144

Website:  
[Gov.uk/dwp](http://Gov.uk/dwp)

**Statistician:**

Katie Dodd  
Information, Governance and  
Security Directorate  
Department for Work and  
Pensions  
Room BP5201  
Benton Park Road  
Longbenton  
Newcastle upon Tyne  
NE98 1YX

Telephone: 0191 216 6263  
Email:  
[katie.dodd@dwp.gsi.gov.uk](mailto:katie.dodd@dwp.gsi.gov.uk)

**Next publication:**  
13<sup>th</sup> August 2014

## DWP STATISTICAL SUMMARY

This Statistical Summary aims to give users a structured overview of Official Statistics published by the Department for Work and Pensions (DWP). Statistics are grouped by component area of DWP and, for each statistic; links are given for users to access more detailed information.

The working age inactive benefit early estimates are official statistics;  
[See: <http://www.statisticsauthority.gov.uk/national-statistician/types-of-official-statistics>]

The early estimates for working age inactive benefit client groups are released monthly and are designed to give indicative, timely information; they are not a substitute for the National Statistics. They will be replaced by the quarterly National Statistics covering the same period when they are published. The National Statistics are the finalised figures.

These statistics were released on 16<sup>th</sup> July 2014 according to the arrangements approved by the UK Statistics Authority. Not all DWP National Statistics are covered by this release. Some statistics have their own first releases, but links to these are given throughout.

### Key Statistics:

#### Early estimates:

- At the end of May 2014, the working age Income Support lone parents (ISLP) early estimate was 475 thousand.
- The Employment and Support Allowance/ incapacity benefits (ESA/IB) early estimate for May 2014 is 2.480 million. Of these, approximately 92.1% were in receipt of benefit payments from Incapacity Benefit, Severe Disablement Allowance, Employment and Support Allowance or Income Support/ Pension Credit. The remaining 7.9% percent received National Insurance credits only.

*If you have any comments or requests regarding this publication, please contact DWP via [stats-consultation@dwp.gsi.gov.uk](mailto:stats-consultation@dwp.gsi.gov.uk), or join the "Welfare and Benefit Statistics" community at [www.statsusernet.org.uk](http://www.statsusernet.org.uk).*

**Contents**

*Page*

**1. Early Estimates for Working Age Inactive Benefit Client Group**

1.1 Employment and Support Allowance / incapacity benefits (ESA/IB) client group	3
1.2 Income Support Lone Parent (ISLP) client group	5
Notes	7

## 1. Early Estimates for Working Age Inactive Benefit Client Group

### 1.1 Employment and Support Allowance / incapacity benefits (ESA/IB) client group

Table 1.1: Working-age ESA/IB client group February 2010 to May 2014			Table 1.2: Working-age ESA/IB client group claiming NI credits only February 2010 to May 2014		
Time Series	National Statistic	Early Estimate	Time Series	National Statistics Source Data	Early Estimate
	Number of Claimants (thousands)	Number of Claimants (thousands)		National Insurance Credits only (percentage)	National Insurance Credits only (percentage)
Feb-10	2,614.76		Feb-10	5.7%	
May-10	2,613.10		May-10	5.7%	
Aug-10	2,606.61		Aug-10	5.7%	
Nov-10	2,586.42		Nov-10	5.8%	
Feb-11	2,578.66		Feb-11	5.6%	
May-11	2,570.22		May-11	5.6%	
Aug-11	2,582.18		Aug-11	5.5%	
Nov-11	2,575.60		Nov-11	5.8%	
Feb-12	2,557.68		Feb-12	5.8%	
May-12	2,528.14		May-12	7.3%	
Aug-12	2,517.07		Aug-12	7.1%	
Nov-12	2,499.96		Nov-12	7.4%	
Feb-13	2,475.67		Feb-13	7.7%	
May-13	2,456.47		May-13	7.8%	
Aug-13	2,440.80		Aug-13	7.6%	
Nov-13	2,456.36		Nov-13	7.7%	
Dec-13		2,480	Dec-13		7.7%
Jan-14		2,465	Jan-14		7.8%
Feb-14		2,465	Feb-14		7.8%
Mar-14		2,470	Mar-14		7.8%
Apr-14		2,485	Apr-14		7.8%
May-14		2,480	May-14		7.9%

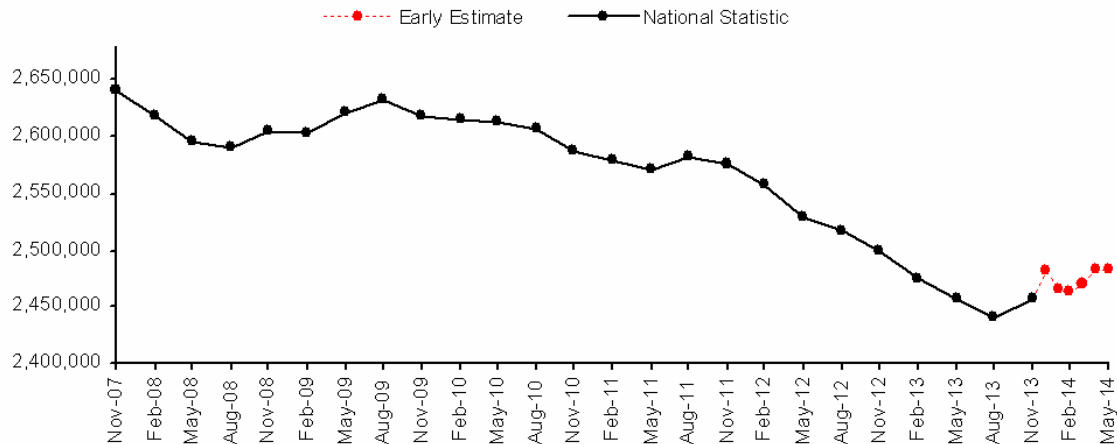
The working-age **ESA/IB** early estimate for May 2014 is **2.480 million** to the nearest 5,000. This represents an increase of 1.0 per cent since November 2013 (the latest National Statistic). As the Incapacity Benefit reassessment continues, users should be aware that there may be increased uncertainty around these early estimates.

In May 2014 approximately 92.1% were in receipt of benefit payments from Incapacity Benefit, Severe Disablement Allowance, Employment and Support Allowance, Income Support, Pension Credit. The remaining 7.9% percent received National Insurance credits only (i.e. no payment of IB, SDA, ESA, IS or PC). A noticeable rise in the proportion of claimants receiving National Insurance credits was seen in May 2012. This is due to the introduction of a 365 day limit on receipt of contribution based ESA for those in the Work Related Activity Group on 1 May 2012.

These figures are estimates of the final National Statistic, to give an indication of their accuracy, over the past year the early estimates in Table 1.1 have been revised by an average of 0.3 per cent. See notes section for more information. Further details on the accuracy of the early estimates in Table 1.2 can also be found there.

The age at which men and women reach State Pension age is gradually increasing. Under current legislation, State Pension age for women will equalise with State Pension age for men at 65 in 2018. Both men's and women's State Pension age will increase from 65 to 66 between December 2018 and October 2020. The Pensions Bill 2013-14 contains provision for a State Pension age of 67 to be reached by 2028. Please see the Welfare Reform section of the notes for further information.

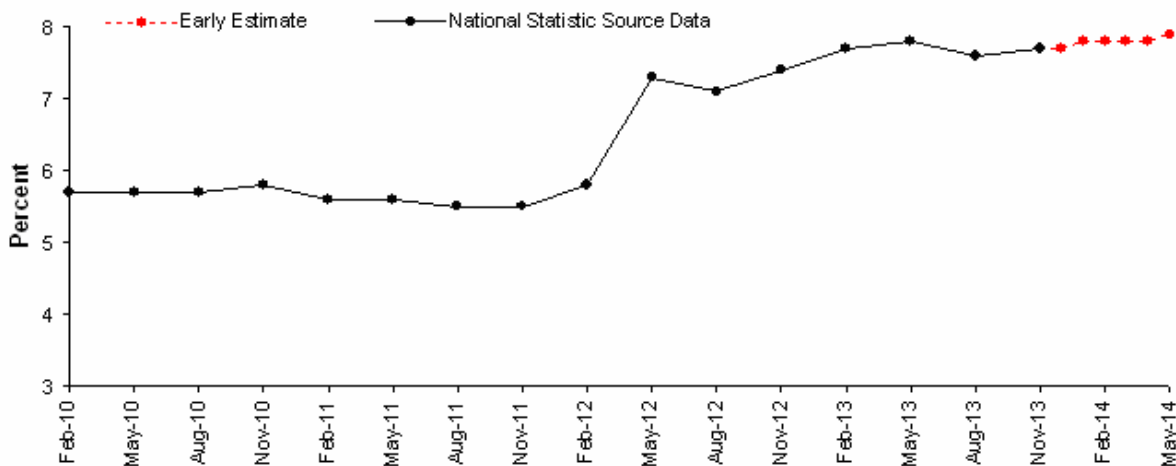
**Figure 1.1: National Statistics to November 2013 and early estimates of numbers in working age ESA/IB client group: December 2013 to May 2014**



**Notes relating to Figure 1.1 and Table 1.1**

1. ESA/IB: From November 2008 ESA replaced Incapacity Benefit (IB) and Income Support paid on the grounds of incapacity for new claims from 27 October 2008. Prior to this the "incapacity benefits group" referred to claimants of IB or Severe Disablement Allowance including people claiming Income Support on the grounds of incapacity.
2. The red dotted line in the chart above emphasises that the figures are estimates and official statistics.
3. Source data: *DWP Information, Governance and Security: Work and Pensions Longitudinal Study*

**Figure 1.2: National Statistics to November 2013 and Early estimates of the proportion of working age inactive benefit claimants in the ESA/IB client group claiming NI credits only: December 2013 to May 2014**



**Notes relating to Figure 1.2 and Table 1.2**

1. ESA/IB: From November 2008 ESA replaced Incapacity Benefit (IB) and Income Support paid on the grounds of incapacity for new claims from 27 October 2008. Prior to this the "incapacity benefits group" referred to claimants of IB or Severe Disablement Allowance including people claiming Income Support on the grounds of incapacity.
2. On 1 May 2012, a 365 day limit on the receipt of contribution based ESA for those in the Work Related Activity Group was introduced.
3. Source data: *DWP Information, Governance and Security: Work and Pensions Longitudinal Study*

## 1.2 Income Support lone parent (ISLP) client group

Table 1.3 ISLP client group February 2010 to May 2014

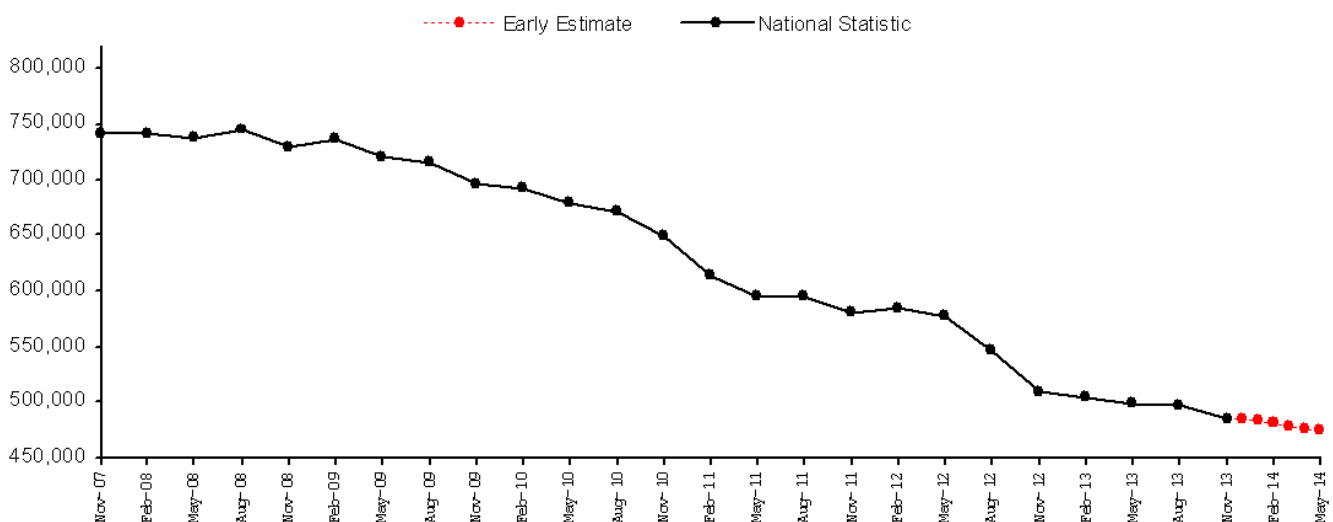
Time Series	Thousands	
	National Statistics Number of Claimants	Early Estimate Number of Claimants
Feb-10	692.02	
May-10	679.15	
Aug-10	672.35	
Nov-10	648.30	
Feb-11	613.78	
May-11	595.40	
Aug-11	595.29	
Nov-11	581.62	
Feb-12	584.17	
May-12	577.08	
Aug-12	545.24	
Nov-12	510.06	
Feb-13	504.89	
May-13	499.73	
Aug-13	497.54	
Nov-13	485.00	
Dec-13		485
Jan-14		480
Feb-14		480
Mar-14		480
Apr-14		475
May-14		475

The working-age **ISLP** early estimate for May 2014 is **475 thousand** to the nearest 5,000. This represents a fall of 2.3 per cent since November 2013 (the latest National Statistic).

The number of lone parents claiming Income Support has been affected by the Lone Parent Obligations policy changes which came into effect from 24 November 2008. For more information see the notes section. The figures are estimates of the final National Statistic, to give an indication of their accuracy, over the past year the early estimates have been revised by an average of 0.2 per cent. See the notes section for more information.

The age at which men and women reach State Pension age is gradually increasing. Under current legislation, State Pension age for women will equalise with State Pension age for men at 65 in 2018. Both men's and women's State Pension age will increase from 65 to 66 between December 2018 and October 2020. The Pensions Bill 2013-14 contains provision for a State Pension age of 67 to be reached by 2028. This will introduce a small increase to the number of working age benefit recipients and a small reduction to the number of pension age recipients. Please see the Welfare Reform section of the Notes for further information.

Figure 1.3: National Statistics to November 2013 and early estimates of numbers in working age ISLP client group: December 2013 to May 2014



**Notes relating to Figure 1.3 and Table 1.3:**

1. ISLP: claimants on IS with child under 16 and no partner.  
New and repeat customers with the following conditions will no longer be entitled to Income Support:
  - A youngest child aged 12 or over from November 2008;
  - A youngest child aged 10 or over from October 2009;
  - A youngest child aged 7 or over from October 2010.
  - The Welfare Reform Act 2012 introduced further changes and from May 2012 lone parents are only eligible to claim Income Support until their youngest child is five years old.
2. The red dotted line in the chart above emphasises that the figures are estimates and official statistics.
3. Source data: *DWP Information, Governance and Security Directorate: Work and Pensions Longitudinal Study*

<https://www.gov.uk/government/publications/early-estimates-for-working-age-inactive-benefit-client-groups>

## NOTES

### 1. The Statistical Summary

The Department for Work and Pensions (DWP) publish a Statistical Summary document each month. It is used for the release of a wide range of DWP statistics

The DWP Statistical Summary brings together key National Statistics on DWP administered benefits and JSA (Jobseeker's Allowance) and ESA (Employment and Support Allowance) sanction decisions. To provide a more complete picture of DWP responsibility, statistics on Housing Benefit and the Child Support Agency are also included.

The Summary is published monthly, containing Official Statistics giving early estimates of inactive benefit caseloads. Each quarter (in May, August, November and February), the Summary is a larger document containing the detail of DWP administered benefits, Housing Benefit, JSA and ESA Sanctions and the Child Support Agency.

Alongside the Statistical Summary, there are a large number of tables which enable the user to delve in to the detail. These are provided to the user as:

- The DWP Tabulation Tool – for DWP administered benefits and employment programmes the Tabulation Tool provides the user with an interactive tool to select one of thousands of possible tabulations. This is available for caseloads and on/off flows at: <https://www.gov.uk/government/organisations/department-for-work-pensions/series/dwp-statistics-tabulation-tool>. A similar Tabulation Tool, derived from 5% sample data, is also available. Whenever possible, 100% data should be used in preference to 5% estimates, as these are both more accurate and form DWP's headline statistics. Some statistics remain outside the scope of the Tabulation Tool but will continue to be available via the internet as pre-defined summary tables.
- Identical numbers via Nomis (<https://www.nomisweb.co.uk/Default.asp>)
- Stat-Xplore – Stat-Xplore provides a guided way to explore DWP benefit statistics. Using Stat-Xplore you can: create customised tabulations; view results in interactive charts; share outputs via social networking tools; or download into common file formats. The tool contains data on Housing Benefit claimants, JSA and ESA Sanctions, overseas nationals registering for a National Insurance Number (NINo) and Personal Independence Payment (PIP) (<https://stat-xplore.dwp.gov.uk/>). In the future Stat-Xplore will include data on a wider set of DWP benefits.
- Separate detailed tables on Claimants on out-of-work benefits (via the [Working Age Client Group Tabulation Tool](#), use first "Useful Resources and Sites" link)
- Tables broken down by [Lower Super Output Area \(LSOA\)](#) and [Census Output Area \(COA\)](#).
- Other tables and background information via links on the Tabulation Tool pages (e.g. links to long time series spreadsheets; descriptions of the benefit.)

The National Statistics paper "DWP statistics transformed: the modernisation of the DWP's data sources and statistical publications" announced major changes to the National Statistics the Department publishes in 2005. Much of this content is still relevant and is available from:

[http://webarchive.nationalarchives.gov.uk/20130107093842/http://statistics.dwp.gov.uk/asd/asd1/stats\\_consultation/modstats.pdf](http://webarchive.nationalarchives.gov.uk/20130107093842/http://statistics.dwp.gov.uk/asd/asd1/stats_consultation/modstats.pdf)

On 23 January 2013, DWP opened a consultation on "People and households claiming Universal Credit, Personal Independence Payment and other benefits: Plans for 2013-2017". The outcome of this consultation will shape the content and format of the Statistical Summary through to 2017 and beyond. The full consultation can be found at: <https://www.gov.uk/government/consultations/changes-to-statistics-showing-claims-for-universal-credit-and-pip>.

This consultation has now closed. Results will be published in due course.

### 2. National Statistics Code of Practice

DWP complies with the Code of Practice for Official Statistics and supporting Principles. Detailed policy statements and statement of compliance with the pre-release access to official statistics order 2008 are given below:

[DWP policy statements](#)

Detailed policy and methodology relating to the Statistical Summary can be found at:

- [Quality](#)
- [Methodology](#)

- [Uses and Users](#)
- [Ad hocs and pricing](#)

The UK Statistics Authority report on the compliance with the Code of Practice for Official Statistics for the Statistical Summary is report number 66 at:

<http://www.statisticsauthority.gov.uk/assessment/assessment/assessment-reports/index.html>

The United Kingdom Statistics Authority has designated these statistics as National Statistics, in accordance with the Statistics and Registration Service Act 2007 and signifying compliance with the Code of Practice for Official Statistics.

Designation can be broadly interpreted to mean that the statistics:

- meet identified user needs;
- are well explained and readily accessible;
- are produced according to sound methods, and
- are managed impartially and objectively in the public interest.

Once statistics have been designated as National Statistics it is a statutory requirement that the Code of Practice shall continue to be observed.

DWP would like to hear your views on our statistical publications. If you use any of our statistics publications, we would be interested in hearing what you use them for and how well they meet your requirements. Please email DWP at [stats-consultation@dwp.gsi.gov.uk](mailto:stats-consultation@dwp.gsi.gov.uk).

An ongoing questionnaire, enabling DWP to target future consultations at interested users; shaping the future direction of statistics development to address user needs; and helping ensure value for money, whilst giving users a structured way of expressing their views is available at:

[https://www.gov.uk/government/uploads/system/uploads/attachment\\_data/file/205190/statistical\\_summary\\_questionnaire.doc](https://www.gov.uk/government/uploads/system/uploads/attachment_data/file/205190/statistical_summary_questionnaire.doc)

Completed questionnaires can be returned by e-mail to [stats-consultation@dwp.gsi.gov.uk](mailto:stats-consultation@dwp.gsi.gov.uk) or by post to the following address:

Katie Dodd  
 Information, Governance and Security Directorate  
 Department for Work and Pensions  
 Room BP5201  
 Benton Park Road  
 Longbenton  
 NEWCASTLE UPON TYNE  
 NE98 1YX

Users can also join the “Welfare and Benefit Statistics” community at: <http://www.statsusernet.org.uk>.

### 3. Statistical groups

DWP has a typology to define Statistical Groups within the client group classifications. The aim of the Statistical Group typology is to present each person by the main reasons they are in contact with the Department. Like the client group classification, each client is classified just once, permitting the estimation of the total number of people claiming one or more benefits. The Statistical Group hierarchy is:

a] Jobseeker	e] Other income-related benefits
b] Employment and Support Allowance and incapacity benefits	f] Disabled
c] Lone parents	g] Bereaved
d] Carers	h] Housing Benefit
	i] State Pension only recipients

From November 2008 the “incapacity benefits statistical group” includes Employment and Support Allowance (ESA). ESA replaced Incapacity Benefit and Income Support paid on the grounds of incapacity for new claims from



27<sup>th</sup> October 2008. Prior to this the “incapacity benefits group” covered people on Incapacity Benefit or Severe Disablement Allowance, including people claiming Income Support on the grounds of incapacity.

#### **4. Jobseeker’s Allowance figures at ONS**

The preferred source of numbers for Jobseeker’s Allowance is the ONS claimant count figure; these are more up to date and contain clerical cases. However, the reason we use the DWP JSA figures is that they are consistent with the other benefits used to produce DWP National Statistics, and permit a wider set of breakdowns. The ONS figures are available from Nomis and <http://www.statistics.gov.uk/>.

#### **5. Flows on and off benefit**

The flows Tabulation Tools show a full back series for on-flow and off-flow. Pension Credit information is available via a one-click table: [http://83.244.183.180/100pc/pc/tabtool\\_pc.html](http://83.244.183.180/100pc/pc/tabtool_pc.html). User guidance on the flows series can be found at:- [http://83.244.183.180/flows/flows\\_on/Guidance%20for%20Users.pdf](http://83.244.183.180/flows/flows_on/Guidance%20for%20Users.pdf)

#### **6. Early Estimates**

The DWP benefit National Statistics have a gap of around five and a half months between the publication and reference dates.

The early estimates are official statistics (see: <http://www.statisticsauthority.gov.uk/national-statistician/types-of-official-statistics>) and published monthly to give indicative, timely information ahead of the publication of full National Statistics. The Office for National Statistics publishes the Jobseeker’s Allowance claimant count every month, one month in arrears. Consequently, the Early Estimates focus on the economically inactive groups of “incapacity benefits and Employment and Support Allowance” and “Income Support lone parents”.

The main reason for the lag in the National Statistics release is because we have to wait three months for a small but significant number of late claims to be processed. Waiting for these late claims makes the National Statistics figures more accurate than the early estimates where we simply predict the number of late claims based on historical levels.

The early estimates are not a substitute for the National Statistics and will be replaced when the final quarterly National Statistics covering the same period are published. However, the estimates are fairly close to the final National Statistics figures. To give an indication of their accuracy, over the past year the early estimates for ESA/IB have been revised by an average of 0.3%, with the biggest revision being 0.90% and the smallest being 0.01%. The early estimates for ISLP have been revised by an average of 0.2%, with the biggest revision being 0.51% and the smallest being 0.02%.

During the re-assessment of Incapacity Benefit claimants for Employment and Support Allowance, users should be aware that there may also be increased uncertainty around these early estimates. As level of late claims is estimated using historical data, any change in the structure of the flows on and off benefit can affect the accuracy of the methodology. DWP plan to review the methodology each month to ensure that the estimates are as good as possible.

More detailed information can be accessed via the following links:

[https://www.gov.uk/government/uploads/system/uploads/attachment\\_data/file/204838/tech-doc-early-estimates-working-age-inactive.pdf](https://www.gov.uk/government/uploads/system/uploads/attachment_data/file/204838/tech-doc-early-estimates-working-age-inactive.pdf)

[https://www.gov.uk/government/uploads/system/uploads/attachment\\_data/file/204837/QandA\\_Early\\_Estimates\\_fin al.pdf](https://www.gov.uk/government/uploads/system/uploads/attachment_data/file/204837/QandA_Early_Estimates_fin al.pdf)

#### **7. Welfare Reform**

The Lone Parent Obligation policy came into effect from 24 November 2008; Lone Parents (LPs) with a youngest child aged 12 or over were no longer able to make a new or repeat claim for Income Support (IS) solely on the basis of their parental status. Existing IS LPs with a youngest child aged 12 or over had their eligibility removed over a period of time commencing 2<sup>nd</sup> March 2009. From October 2009 this policy was extended to LPs with a youngest child aged 10 or 11 and from October 2010 the policy was extended to LPs with a youngest child aged 7

or over. The Welfare Reform Act 2012 introduced further changes and from 21 May 2012 lone parents have been eligible to claim Income Support until their youngest child is five years old.

Most affected LPs will leave IS and claim Jobseeker's Allowance (JSA). However, there are exceptions to these rules where the youngest child can legitimately be over the ages mentioned above. Similarly, some former LPs remain on IS for other reasons (e.g. they have a long term caring responsibility and claim Carer's Allowance). The IS LP series will continue to be defined as 'single IS claimants with a child under 16'.

Referrals to the new employment programme "Work Programme" began from June 2011

(<https://www.gov.uk/moving-from-benefits-to-work/job-search-programmes>). In the run up to that launch, a new package of Get Britain Working support measures was introduced. In tandem with these changes, referrals to legacy employment programmes ceased. Final statistics for these programmes have now been released. The existing Tabulation Tools will remain available for historical analysis. For statistics relating to these new programmes see:

<https://www.gov.uk/government/publications/pre-work-programme-support> and

<https://www.gov.uk/government/organisations/department-for-work-pensions/series/work-programme-statistics--2>

The age at which men and women reach State Pension age is gradually increasing. Under current legislation, State Pension age for women will equalise with State Pension age for men at 65 in 2018. Both men's and women's State Pension age will increase from 65 to 66 between December 2018 and October 2020. The Pensions Bill 2013-14 contains provision for a State Pension age of 67 to be reached by 2028. The first quarterly statistical summary to be affected was the November 2010 publication and the first early estimates to be affected were released in June 2010. These changes introduce a small increase to the number of working age benefit recipients and a small reduction to the number of pension age recipients. There are also changes to the way we report benefit recipients as a proportion of the working population. More information can be found at:

<http://webarchive.nationalarchives.gov.uk/20130513082300/http://statistics.dwp.gov.uk/asd/espa.pdf> . For general information about the change to State Pension age, please see: <https://www.gov.uk/browse/working/state-pension>.

Universal Credit (UC) is a new benefit that has started to replace six existing benefits and tax credits with a single monthly payment and will eventually replace:

- Income-based Jobseeker's Allowance
- Income-related Employment and Support Allowance
- Income Support
- Working Tax Credit
- Child Tax Credit
- Housing Benefit

Universal Credit was launched as a Pathfinder in four areas of the North West commencing in April 2013 and is now available in 10 areas across England, Scotland and Wales. Universal Credit will continue to roll out across the North West of England from June 2014 until the whole region is covered. In total 90 Jobcentres, or 1 in 8 Jobcentres in Britain, will offer the service once the North West expansion has been completed.

Statistics relating to UC can be found at: <https://www.gov.uk/government/collections/universal-credit-statistics>.

A new three tier sanctions regime was introduced and came into force in October 2012 for JSA and December 2012 for ESA which seeks to broadly align the JSA & ESA sanctions regimes with the model to be introduced under UC. In the new regime the consequences of failure will be clearer for claimants. The new system will be more robust, particularly for claimants who repeatedly fail to meet their most important responsibilities. Sanctions will also be applied more quickly – specifically by the next payment date. For more details see:

JSA: <http://www.dwp.gov.uk/adviser/updates/jsa-sanction-changes/>

ESA: <http://www.dwp.gov.uk/adviser/updates/esa-sanction-changes/>

From 8 April 2013, the government introduced a new benefit called Personal Independence Payment to replace Disability Living Allowance for eligible working age people aged 16 to 64. Further information on statistics relating to PIP can be found at: <https://www.gov.uk/government/collections/personal-independence-payment-statistics>

## 8. Known Issues, Changes and Revisions to the Statistical Summary

No known issues.

## 9. Notification of future changes to the Summary

The following changes are planned for future releases:

- We intend to change the 'Age of Youngest Child Dependant' breakdown in the tabulation tool for claimants of Income Support. Following feedback, we have revised the new breakdown: we propose to split the 'Under 3 years' breakdown to 'Under 1 year' and '1 – 2 years'. The new proposed breakdown is:
  - Unknown/No children
  - Under 1 year
  - 1 – 2 years
  - 3 years
  - 4 years
  - 5 – 6 years
  - 7 – 9 years
  - 10 – 11 years
  - 12 – 15 years
  - 16 years and over

We plan to implement the change for the November release. If you have any comments or questions about this proposed breakdown, please email [stats-consultation@dwp.gpn.gov.uk](mailto:stats-consultation@dwp.gpn.gov.uk).

- A new section summarising Maternity Allowance statistics will be included in the August Quarterly Statistical Summary.

## Current consultations

**Universal Jobmatch** launched on 19 November 2012. This is DWP's new, free online job posting and matching service. Universal Jobmatch replaces the current vacancy management services, Employer Direct and Employer Direct Online for companies, and it replaces the Jobcentre Plus jobs and skills search facility for jobseekers.

As a result, there have been fundamental changes in the associated statistical series. User comments have been received as part of a consultation, which can be found on page 4 of:

[https://www.gov.uk/government/uploads/system/uploads/attachment\\_data/file/195159/stats\\_summary\\_aug12.pdf](https://www.gov.uk/government/uploads/system/uploads/attachment_data/file/195159/stats_summary_aug12.pdf).

The consultation is now closed. Results are available at: <https://www.gov.uk/government/consultations/changes-to-jobcentre-plus-vacancies-statistics>. The Department continues to receive a regular stream of user concerns about the limitations of the new Universal Jobmatch vacancy data. These are currently under consideration by the project team.

On 23 January 2013, DWP opened a consultation on **People and households claiming Universal Credit, Personal Independence Payment and other benefits: Plans for 2013-2017**. The outcome of this consultation will shape the content and format of the Statistical Summary through to 2017 and beyond. This consultation can be found at:

[https://www.gov.uk/government/uploads/system/uploads/attachment\\_data/file/183265/dwp\\_stats2013\\_17.pdf](https://www.gov.uk/government/uploads/system/uploads/attachment_data/file/183265/dwp_stats2013_17.pdf)

This consultation is now closed. Results will be published in due course.

## 10. Northern Ireland Statistics

The statistics in this Summary cover Great Britain (England, Scotland and Wales) only. Comparable benefit statistics for Northern Ireland can be found at:

[http://www.dsdni.gov.uk/index/stats\\_and\\_research/benefit\\_publications.htm](http://www.dsdni.gov.uk/index/stats_and_research/benefit_publications.htm)

and

[http://www.dsdni.gov.uk/index/stats\\_and\\_research/geographical\\_data\\_on\\_ss\\_benefits.htm](http://www.dsdni.gov.uk/index/stats_and_research/geographical_data_on_ss_benefits.htm) for geographical breakdowns

Currently, the Northern Ireland statistics use extracts from the benefit systems very similar to those used to create the 5% sample numbers for Great Britain (although the Northern Ireland sample size is usually greater than 5%). The directly equivalent GB numbers can be found at: <http://83.244.183.180/5pc/tabtool.html>. However, Northern Ireland statistics are shortly due to move to extracts from the benefit systems very similar to those used to create

the WPLS/100% sample numbers (<http://83.244.183.180/100pc/tabtool.html>) for Great Britain. However, Northern Ireland statistics will ignore the effect of retrospection.

Comparisons between the Great Britain 5% samples and 100% samples, plus the effect of retrospection can be seen in documents entitled "Differences between WPLS and 5% sample data" in the "Useful Resources and Sites" section of each single benefit 100% sample Tabtool (e.g. [http://83.244.183.180/100pc/is/tabtool\\_is.html](http://83.244.183.180/100pc/is/tabtool_is.html))

Housing Benefit is a social security benefit paid by the Housing Executive. It helps people on a low income pay their rent and rates. In Northern Ireland, rates are paid instead of Council Tax. Limited Housing Benefit numbers are available in the summary bulletin at:

[http://www.dsdni.gov.uk/index/publications/summary\\_statistics\\_bulletin.htm](http://www.dsdni.gov.uk/index/publications/summary_statistics_bulletin.htm). For people who own their own property and need help with rates only, Land and Property Services (LPS) provide rates relief payments. Statistics on those receiving rates relief only are not available.

Employment Programmes are different in Northern Ireland. Hence, statistics are not directly comparable. However, numbers on the various schemes are available from:

<http://www.delni.gov.uk/index/statsandresearch/training-and-employment-stats.htm>.

Vacancy statistics for Northern Ireland are available at <http://www.detini.gov.uk/deti-stats-index/stats-surveys/stats-vacancy-stats.htm> and at <http://www.delni.gov.uk/index/statsandresearch/labour-market-information-stats/vacancies.htm>. Statistics on Jobcentre Plus Sanctions and Child Maintenance are not currently published for Northern Ireland.

## **11. Her Majesty's Courts and Tribunals Service**

Her Majesty's Courts and Tribunals Service was created on 1 April 2011. It brings together Her Majesty's Courts Service and the Tribunals Service into one integrated agency providing support for the administration of justice in courts and tribunals.

Responsibility for publishing statistics on the appeals now resides with Her Majesty's Courts and Tribunals Service and they publish statistical information via their website <http://www.justice.gov.uk/about/hmcts>

## **12. Fraud and Error statistics**

National Statistics are published presenting six-monthly estimates of fraud and error in claims for Income Support, Jobseeker's Allowance, Pension Credit and Housing Benefit, along with an annual estimate of the level of fraud and error in the benefit system as a whole. One-off benefit reviews have been carried out from time to time to estimate fraud and error in claims for other benefits. Reports can be found at

<https://www.gov.uk/government/organisations/department-for-work-pensions/series/fraud-and-error-in-the-benefit-system>

## **13. Take-Up of Income-Related Benefits**

Publications contain information on the take-up of the main income-related benefits in Great Britain: Income Support, Pension Credit, Housing Benefit, Council Tax Benefit, Employment and Support Allowance (income related) and Jobseeker's Allowance (income based). Take-up is measured in two ways. Expenditure take-up compares the total amount of benefit received in the course of a year with the total amount that would have been received if everyone took up their entitlement for the full period of entitlement. Caseload take-up compares the number of benefit claimants – averaged over the year – with the number who would be receiving if everyone took up their entitlement for the full period of entitlement. Data is sourced from the Family Resources Survey and administrative benefit records. Latest published figures are available at:

<https://www.gov.uk/government/organisations/department-for-work-pensions/series/income-related-benefits-estimates-of-take-up--2>

## **14. Other National and Official Statistics issued by the Department for Work and Pensions**

Details of other National and Official Statistics produced by the Department for Work and Pensions can be found on the DWP website at the following links:

- A list of DWP statistics: <https://www.gov.uk/government/organisations/department-for-work-pensions/about/statistics> ;

- A schedule of statistical releases over the next 12 months:  
<https://www.gov.uk/government/organisations/department-for-work-pensions/about/statistics> ;
- And a list of the most recent releases:  
[https://www.gov.uk/government/publications?keywords=&publication\\_filter\\_option=statistics&topics\[\]=all&departments\[\]=department-for-work-pensions&world\\_locations\[\]=all](https://www.gov.uk/government/publications?keywords=&publication_filter_option=statistics&topics[]=all&departments[]=department-for-work-pensions&world_locations[]=all).
- In accordance with the Code of Practice for Official Statistics, all DWP National Statistics are also announced via the UK Statistics Authority publication hub at: [http://www.statistics.gov.uk/hub/statistics-producers/publications/index.html?newquery=\\*&source-agency=Work+and+Pensions&pagetype=release-landing-page](http://www.statistics.gov.uk/hub/statistics-producers/publications/index.html?newquery=*&source-agency=Work+and+Pensions&pagetype=release-landing-page). In addition, users can find links to DWP additional statistical analyses that have not been included in our standard publications at <https://www.gov.uk/government/collections/ad-hoc-statistical-publications-list>.