



Layout Plan
Scale 1:5000



LEGEND

— Denotes maintained Channels

Summary Description of Proposed Works

PHASE 4
Completion of east facing quay by sheet piling and subsequent infill to Port of Poole Marina.

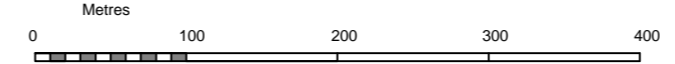
Reclamation area circa 22,000m²

Setting Out Points
C2 50 42.524N, 001 59.162W
D4 50 42.503n, 001 59.157W

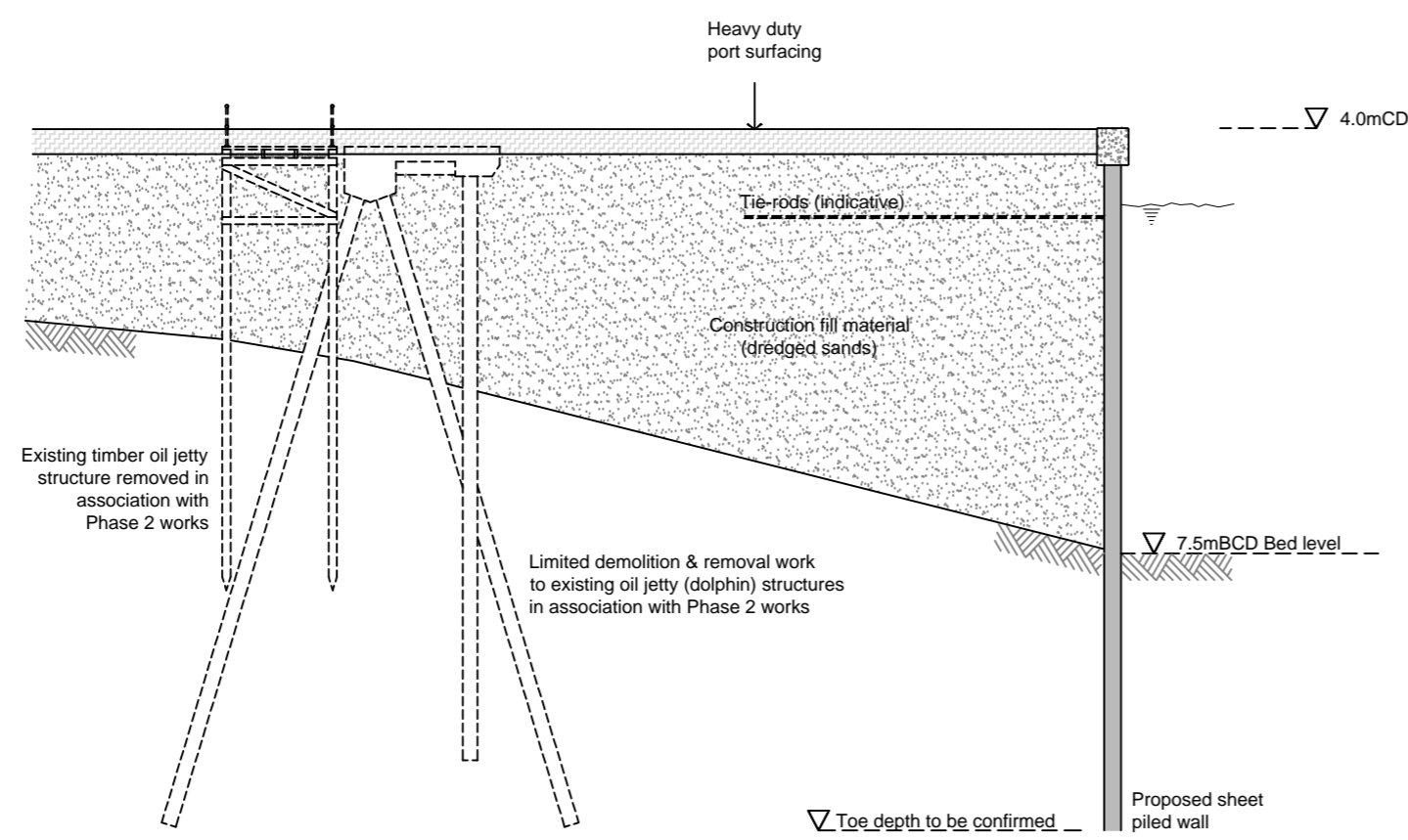
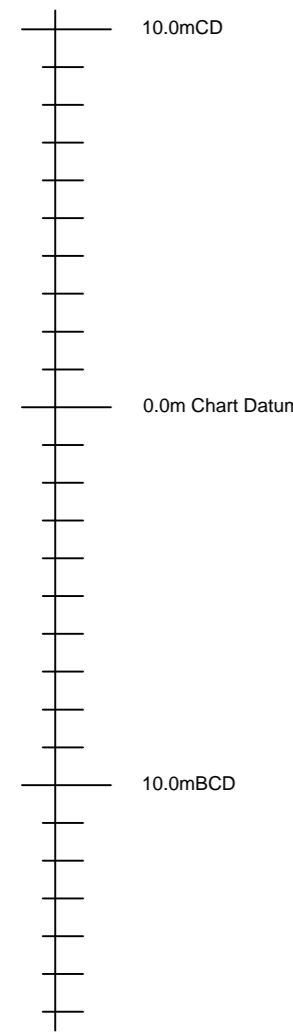
NOTES

1. Building and land uses shown are indicative only.

Based upon Ordnance Survey Map with the sanction of the Controller of H.M. Stationery Office



Section 4-4
Scale 1:200



revision	amendment	date

POOLE HARBOUR COMMISSIONERS

The Poole Harbour Revision (Works)
Order 2014

PHASE 4 WORKS

Andy Ramsbottom MSc CEng MICE
Harbour Engineer
Harbour Office, 20 New Quay Road
Hamworthy, Poole, Dorset. BH15 4AF

drawn pba
date 20.01.2014
scale as stated @ A2

drawing no. HRO4
revision