



Animal Feed Statistics for Great Britain - March 2014

Statistics on GB Animal Feed include data for the period January, February and March 2014 with percentage changes for the corresponding periods last year (tables 1 to 4 and table 6).

Statistics for the quarterly average price series show data from the period January to March 2006 up to the period October to December 2013 (table 7).

Key points:

- In March 2014 the total GB retail production of animal feed was down -4.6% compared with March 2013
- In March 2014 the total GB raw material usage in the retail production of animal feed was down -5.3% compared with March 2013, with a slightly higher cereal incorporation rate. There was proportionately more barley and maize being used
- In March 2014 the total GB integrated feed production was down -1.4% compared with March 2013
- For the period October to December 2013 quarterly average prices of animal feedingstuffs were as follows:-

Cattle and calf feed -	£238 per Tonne
Pig feed -	£260 per Tonne
Poultry feed -	£274 per Tonne
Sheep feed -	£234 per Tonne
- This is the second successive quarter where average feed prices have fallen across all categories

Revisions this month:

Please note there is a level of estimation due to Defra receiving revised backdated data for the retail animal feed survey and integrated poultry units (IPU's).

Please check future releases or datasets for up to date information.

These results are released monthly and will be next updated at 09:30 on 5 June 2014. Average prices of animal feedingstuffs will now be updated at 09:30 on 5 June 2014. Please note, these prices were due to be published in this release, however, due to revising animal feed production figures, the prices will now be published in the next release.

Enquiries to:

Tom Johnson, Department for Environment, Food and Rural Affairs, Room 201, Foss House, Kings Pool, 1-2 Peasholme Green, York YO1 7PX, Tel: 01904 455301

Email: Tom.Johnson@defra.gsi.gov.uk

Email: crops-statistics@defra.gsi.gov.uk

A National Statistics publication. National Statistics are produced to high professional standards. They undergo regular quality assurance reviews to ensure that they meet customer needs. They are produced free from any political interference. For general enquiries about National Statistics, contact the National Statistics Public Enquiry Service: tel. 0845 601 3034 email info@statistics.gov.uk. You can also find National Statistics on the internet at www.statistics.gov.uk.



Animal Feed Statistics for Great Britain - March 2014

Contents:	Page
Retail Production of Animal Feedingstuffs in Great Britain	3-4
Raw Materials Usage in Animal Feedingstuffs in Great Britain	5-6
Analysis of Retail Production by Company Type	7
Poultry Feed Production	8
Average Compound Feed Prices by Main Livestock categories	9
Published Charts	10
Methodology, Notes and Revisions Policy	11-12

Results are typically available five weeks after the monthly collection period. They are published in a statistical release 12 times per year. Historic data from January 1997 data is available in a separate time series spreadsheet that is published at:

To access the historic datasets for the GB Retail Production of Animal Feedingstuffs (tables 1 to 4), the Integrated Feed Production (table 6a) and the quarterly average prices and historic monthly average prices of animal feedingstuffs please see the following link:

<https://www.gov.uk/government/publications/animal-feed-production>

The datasets are the last 3 documents in the list.

Table 1

**Retail Production of Animal Feedingstuffs
in Great Britain**

January to March 2014

Thousand tonnes

	JANUARY	FEBRUARY	MARCH *	Crop Year JULY TO MARCH	12 Month Moving Total
CATTLE AND CALF FEED	370.5	351.3	418.7	3,240.6	4,261.3
All calf feed (3)	15.6	15.0	18.1	140.1	181.8
Compounds for dairy cows	169.6	161.4	196.0	1,567.4	2,054.9
Blends for dairy cows	73.2	73.8	82.0	621.4	822.7
All other cattle feed	62.6	59.3	69.7	527.1	698.8
All other cattle blends	40.1	33.5	43.2	317.6	422.5
Protein concentrates (1)	9.5	8.3	9.7	67.0	80.5
PIG FEED	141.8	137.1	151.1	1,291.4	1,693.0
Pig starters & creep feed	5.3	5.5	5.7	51.2	67.2
Link/early grower feeds	4.9	4.5	5.1	46.8	64.3
Pig growing feed	33.1	31.9	34.2	310.0	410.5
Pig finishing feed	63.2	60.4	67.3	567.3	732.4
Pig breeding feed	34.5	34.2	37.9	307.8	408.1
Protein Concentrates (1)	0.8	0.6	0.9	8.3	10.5
POULTRY FEED (2)	245.4	237.8	298.1	2,461.0	3,309.0
Chick rearing feed	11.8	10.8	12.7	103.9	138.1
Layer feed	78.4	77.0	89.3	737.9	985.8
Broiler chicken feed	113.0	107.0	135.4	1,068.8	1,437.3
Poultry breeding & rearing feed	22.6	22.2	29.0	204.9	273.6
Turkey feed	8.3	9.2	15.5	155.4	192.0
All other poultry feed	11.3	11.5	16.1	189.3	281.1
Protein concentrates (1)	0.0	0.1	0.1	0.8	1.0
SHEEP FEED	86.0	106.3	140.9	562.6	823.6
Compounds for breeding sheep	44.1	64.9	86.9	249.1	372.0
Blends for breeding sheep	3.2	4.3	5.7	22.7	30.3
Compounds for growing and finishing sheep	32.9	32.3	42.3	242.0	355.7
Blends for growing and finishing sheep	5.1	4.1	5.2	43.9	59.2
Protein concentrates (1)	0.7	0.7	0.7	4.8	6.4
HORSE FEED	16.3	15.7	18.0	141.2	189.5
OTHER COMPOUNDS, BLENDS AND CONCENTRATES (1)	26.0	25.5	29.0	319.0	408.5
TOTAL COMPOUNDS, BLENDS AND CONCENTRATES (1)	886.1	873.7	1,055.8	8,015.8	10,684.9
OTHER PROCESSED FEEDINGSTUFFS FOR DELIVERY IN STRAIGHT FORM	12.0	10.0	10.9	125.8	164.9
Flaked maize and other maize products	1.6	1.5	1.4	13.5	18.3
Molassed feedingstuffs	2.3	1.5	1.7	19.1	26.8
All others	8.1	7.0	7.8	93.2	119.8
TOTAL ALL FEEDINGSTUFFS	898.1	883.7	1,066.6	8,141.6	10,849.8

(1) 'Protein Concentrates' includes Balancers.

(2) All production by Integrated Poultry Units are excluded from this table. These data are contained in Table 6a.

(3) Calf feed includes calf milk substitutes.

* March, June, September and December are 5 week periods. All other months are 4 week periods. There were 53 weeks in the Statistical year 2010. In order to incorporate the change January 2010 was increased to a 5 week period compared to 4 weeks in 2009. Figures rounded to the nearest final digit may not add to the totals as shown.

Enquiries: Table 1 - Tom Johnson on ++44(0)1904 455301 Email: tom.johnson@defra.gsi.gov.uk

Table 2

**Retail Production of Animal Feedingstuffs
in Great Britain**

Percentage change over Corresponding period in 2013

	JANUARY	FEBRUARY	MARCH *	Crop Year JULY TO MARCH	12 Month Moving Total
CATTLE AND CALF FEED	1.0%	-2.5%	-4.0%	-0.2%	3.0%
All calf feed (3)	-12.2%	-10.1%	-3.2%	-5.9%	-2.9%
Compounds for dairy cows	5.0%	2.9%	4.0%	3.6%	3.5%
Blends for dairy cows	-2.9%	4.8%	-13.0%	-5.1%	0.3%
All other cattle feed	-10.9%	-14.8%	-10.7%	-6.6%	0.7%
All other cattle blends	14.2%	-17.2%	-13.4%	2.0%	10.4%
Protein concentrates (1)	39.4%	33.2%	47.6%	23.3%	19.6%
PIG FEED	2.8%	4.6%	0.6%	-0.4%	-0.7%
Pig starters & creep feed	8.7%	9.0%	-0.4%	-4.4%	-2.1%
Link/early grower feeds	-13.8%	-20.7%	-25.5%	-22.0%	-19.1%
Pig growing feed	4.7%	5.0%	-1.0%	2.2%	2.0%
Pig finishing feed	3.0%	5.7%	3.8%	1.2%	0.8%
Pig breeding feed	2.2%	6.2%	1.4%	-1.5%	-2.9%
Protein Concentrates (1)	48.9%	-6.2%	10.5%	34.4%	32.5%
POULTRY FEED (2)	-0.1%	-0.9%	0.2%	1.1%	2.5%
Chick rearing feed	-1.0%	0.7%	10.2%	-4.1%	-8.6%
Layer feed	-2.8%	0.8%	1.2%	-0.9%	-0.7%
Broiler chicken feed	3.0%	-1.6%	-2.9%	4.0%	6.5%
Poultry breeding & rearing feed	5.0%	3.1%	6.2%	2.7%	4.3%
Turkey feed	-19.7%	-15.8%	6.5%	-4.0%	-2.3%
All other poultry feed	-0.4%	0.4%	-1.5%	-0.6%	2.9%
Protein concentrates (1)	-68.1%	-44.3%	-34.1%	-15.0%	-12.4%
SHEEP FEED	-13.6%	-14.7%	-19.8%	-15.6%	-0.4%
Compounds for breeding sheep	-18.0%	-15.9%	-24.7%	-21.6%	-2.9%
Blends for breeding sheep	19.0%	-0.7%	2.4%	0.6%	11.7%
Compounds for growing and finishing sheep	-8.4%	-10.6%	-12.9%	-10.4%	3.7%
Blends for growing and finishing sheep	-20.5%	-34.3%	-2.9%	-14.7%	-11.8%
Protein concentrates (1)	-4.7%	-6.4%	1.5%	-5.1%	-0.8%
HORSE FEED	-11.3%	-8.0%	-10.4%	-2.9%	2.6%
OTHER COMPOUNDS, BLENDS AND CONCENTRATES (1)	11.8%	4.3%	9.6%	11.4%	6.8%
TOTAL COMPOUNDS, BLENDS AND CONCENTRATES (1)	-0.6%	-2.6%	-4.5%	-0.7%	2.1%
OTHER PROCESSED FEEDINGSTUFFS FOR DELIVERY IN STRAIGHT FORM	2.0%	-13.7%	-6.5%	19.4%	20.9%
Flaked maize and other maize products	-18.0%	-10.6%	-23.3%	2.6%	9.0%
Molassed feedingstuffs	81.4%	-7.3%	-6.1%	32.5%	53.1%
All others	-5.5%	-15.6%	-2.8%	19.8%	17.4%
TOTAL ALL FEEDINGSTUFFS	-0.6%	-2.8%	-4.6%	-0.5%	2.4%

(1) 'Protein Concentrates' includes Balancers.

(2) All production by Integrated Poultry Units are excluded from this table. These data are contained in Table 6a.

(3) Calf feed includes calf milk substitutes.

Enquiries: Table 2 - Tom Johnson on ++44(0)1904 455301 Email: Tom.Johnson@defra.gsi.gov.uk

**Raw materials usage in retail production of animal feedingstuffs
in Great Britain**

January to March 2014

Thousand tonnes

	JANUARY	FEBRUARY	MARCH *	Crop Year JULY MARCH	12 Month Moving Total
Wheat	217.7	210.3	251.7	2,191.4	2,962.9
Barley	94.9	92.7	107.0	787.4	998.9
Oats	12.4	13.1	15.8	90.5	110.5
Whole and flaked maize	38.4	36.0	42.8	258.5	333.1
Rice bran extractions	0.8	0.8	1.1	8.2	11.6
Maize gluten feed (1)	6.0	5.2	7.9	47.2	55.6
Cereals by-products	119.0	126.0	150.3	1,133.3	1,516.0
of which:					
Wheat Feed	73.0	77.0	90.4	712.4	968.0
Other cereals by-products	13.6	15.5	18.4	149.9	206.9
Distillery by-products	32.4	33.5	41.6	269.9	340.0
Whole oilseeds	6.3	6.3	5.6	55.4	71.5
Oilseed rape cake and meal	73.2	71.5	77.3	594.6	766.6
Soya cake and meal	82.1	82.0	93.9	767.6	1,027.9
Sunflower cake and meal	36.4	37.9	51.4	268.2	351.2
Other oilseed cake and meal (2)	39.7	39.4	45.6	344.5	477.4
Field beans	3.3	3.3	4.0	34.0	44.6
Field peas	2.1	1.9	2.2	18.1	25.3
Dried sugar beet pulp	24.7	24.8	30.0	225.2	309.8
Molasses	26.5	28.2	34.1	239.6	331.0
Citrus and other fruit pulp	0.7	0.7	0.9	12.0	19.9
All meal (Fish, Poultry and other meal) (3)	6.7	6.7	7.9	83.9	106.8
Minerals	34.7	35.0	41.0	317.4	422.4
Oil and fat	18.7	18.5	20.9	187.3	245.5
Protein concentrates (4)	1.5	1.8	2.2	11.2	14.9
Other materials (5)	33.4	20.7	39.4	326.8	446.3
Confectionery by-products	20.7	20.3	23.3	185.7	248.8
TOTAL RAW MATERIALS USED	900.0	883.2	1,056.5	8,186.9	10,897.5
Cereal Incorporation Rate	40.4%	39.9%	39.5%	40.6%	40.4%

Please Note: All raw materials usage by Integrated Poultry Units has now been excluded from this table.
The cereals usage is now included in Table 6.

- (1) Protein content 25% or below.
(2) Cake and meal derived from Copra (coconut), Palm kernels, Shea and Illipe nuts, or any other oilseed or nuts not included in the cakes and meals above.
(3) Comprises feather meal, dried blood and other animal by-products except fat. This definition may include meals used in feed intended for animals to which the EU ban on feeding processed animal protein does not apply.
(4) Ready prepared products for incorporation in animal feed includes balancers.
(5) Includes all raw materials, (including other grains) not listed elsewhere.
* March, June, September and December are 5 week periods. All other months are 4 week periods.
** 2004 is a 53 week statistical year. In order to incorporate the extra week January 2004 was increased to a five week period compared to 4 weeks in January 2005.

Enquiries: Table 3 - Tom Johnson on ++44(0)1904 455301 Email: tom.johnson@defra.gsi.gov.uk

**Raw materials usage in retail production of animal feedingstuffs
in Great Britain**

Table 4

Percentage change over corresponding period in 2013

	JANUARY	FEBRUARY	MARCH *	Crop Year JULY MARCH	12 Month Moving Total
Wheat	-11.3%	-11.2%	-14.8%	-5.3%	-4.2%
Barley	29.7%	32.6%	27.8%	17.8%	21.9%
Oats	80.2%	85.6%	93.5%	57.1%	56.7%
Whole and flaked maize	86.5%	61.1%	52.1%	57.8%	73.9%
Rice bran extractions	-39.2%	-36.9%	-30.8%	-37.6%	-30.2%
Maize gluten feed (1)	139.9%	99.5%	145.6%	95.4%	29.9%
Cereals by-products	-16.4%	-11.5%	-9.2%	-6.9%	-2.0%
of which:					
Wheat feed	-15.8%	-11.7%	-14.4%	-6.8%	-0.9%
Other cereals by-products	-18.7%	-5.7%	-21.9%	0.3%	11.5%
Distillery by-products	-16.8%	-13.4%	11.1%	-10.9%	-11.8%
Whole oilseeds	9.9%	24.4%	-6.3%	13.0%	14.9%
Oilseed rape cake and meal	5.8%	-0.8%	-10.5%	0.7%	3.4%
Soya cake and meal	-9.3%	-8.8%	-15.8%	-11.6%	-10.3%
Sunflower cake and meal	17.3%	11.7%	30.3%	-1.2%	-1.1%
Other oilseed cake and meal (2)	-18.4%	-21.8%	-27.4%	-15.1%	-7.4%
Field beans	-0.9%	-6.8%	-6.7%	-2.4%	-5.9%
Field peas	-17.8%	-20.5%	-17.2%	-16.8%	-11.5%
Dried sugar beet pulp	-15.9%	-16.6%	-20.1%	-9.4%	-1.9%
Molasses	-13.8%	-11.3%	-24.3%	-7.0%	1.8%
Citrus and other fruit pulp	-73.7%	-80.6%	-80.4%	-60.9%	-58.4%
All meal (Fish, Poultry and other meal) (3)	22.9%	19.0%	17.7%	21.1%	12.4%
Minerals	0.0%	0.8%	-4.0%	1.5%	3.7%
Oil and fat	8.4%	3.5%	-2.3%	14.1%	17.4%
Protein concentrates (4)	15.5%	32.3%	83.1%	7.0%	8.9%
Other materials (5)	90.5%	11.4%	24.2%	52.1%	52.1%
Confectionery by-products	-9.5%	-9.1%	-8.4%	-10.5%	-8.8%
TOTAL RAW MATERIALS USED	-0.6%	-2.4%	-5.3%	-0.3%	2.3%

Please Note: All raw materials usage by Integrated Poultry Units has now been excluded from this table. The cereals usage is now included in Table 6.

- (1) Protein content 25% or below.
- (2) Cake and meal derived from Copra (coconut), Palm kernels, Shea and Illipe nuts, or any other oilseed or nuts not included in the cakes and meals above.
- (3) Comprises feather meal, dried blood and other animal by-products except fat. This definition may include meals used in feed intended for animals to which the EU ban on feeding processed animal protein does not apply.
- (4) Ready prepared products for incorporation in animal feed including balancers.
- (5) Includes all raw materials, (including other grains) not listed elsewhere.

Enquiries: Table 4 - Tom Johnson on ++44(0)1904 455301 Email: tom.johnson@defra.gsi.gov.uk

Table 5

**Analysis of retail production by company type
March 2014**

	INDEPENDENTS		CO-OPERATIVES & NATIONALS		G. B. TOTAL	
	MONTH % OF TOTAL	CROP YR % OF TOTAL	MONTH % OF TOTAL	CROP YR % OF TOTAL	MONTH 000 TONNES	CROP YR 000 TONNES
CATTLE AND CALF FEED	64.1%	62.7%	35.9%	37.3%	283.8	2,234.6
Calf feed	68.8%	68.9%	31.2%	31.1%	18.1	140.1
Compounds for dairy cows	62.7%	61.5%	37.3%	38.5%	196.0	1,567.4
All other cattle feed	67.1%	64.6%	32.9%	35.4%	69.7	527.1
PIG FEED	28.8%	28.2%	71.2%	71.8%	150.2	1,283.1
Pig starters & creep feed	66.1%	65.0%	33.9%	35.0%	5.7	51.2
Link/early grower feeds	81.3%	77.0%	18.7%	23.0%	5.1	46.8
Pig growing feed	27.4%	26.8%	72.6%	73.2%	34.2	310.0
Pig finishing feed	25.2%	24.3%	74.8%	75.7%	67.3	567.3
Pig breeding feed	23.7%	23.1%	76.3%	76.9%	37.9	307.8
POULTRY FEED	22.8%	23.4%	77.2%	76.6%	298.0	2,460.2
Chick rearing feed	26.3%	25.4%	73.7%	74.6%	12.7	103.9
Layer feed	20.6%	20.8%	79.4%	79.2%	89.3	737.9
Poultry breeding & rearing feed	10.4%	12.6%	89.6%	87.4%	29.0	204.9
Broiler chicken, turkey and all other poultry feed	25.9%	26.1%	74.1%	73.9%	167.0	1,413.5
SHEEP FEED	70.4%	68.2%	29.6%	31.8%	129.2	491.1
Compounds for breeding sheep	71.9%	65.7%	28.1%	34.3%	86.9	249.1
Compounds for growing & finishing sheep	67.2%	70.9%	32.8%	29.1%	42.3	242.0
HORSE FEED	33.2%	32.2%	66.8%	67.8%	18.0	141.2
OTHER COMPOUNDS, BLENDS AND CONCENTRATES (1)	59.1%	55.3%	40.9%	44.7%	176.5	1,405.7
TOTAL COMPOUNDS, BLENDS AND CONCENTRATES (1)	46.8%	43.6%	53.2%	56.4%	1,055.8	8,015.8
OTHER PROCESSED FEEDINGSTUFFS FOR DELIVERY IN STRAIGHT FORM	97.0%	86.1%	3.0%	13.9%	10.9	125.8
TOTAL ALL FEEDINGSTUFFS	47.3%	44.3%	52.7%	55.7%	1,066.6	8,141.6

(1) 'Protein Concentrates' includes Balancers.

Figures rounded to the nearest final digit may not add to the totals as shown.

Enquiries: Table 5 - Tom Johnson on ++44(0)1904 455301

Email: tom.johnson@defra.gsi.gov.uk

© Crown Copyright, 2014

pg. 7

**Poultry feed production by integrated poultry units (IPU's)
in Great Britain**

January to March 2014

Table 6a

	JANUARY	FEBRUARY	MARCH *	Crop Year JULY TO MARCH *	12 Month Moving total
FEED PRODUCED BY IPUs					
	<i>Amount in thousand tonnes</i>				
Broiler chicken feed	152.2	147.4	180.4	1,421.2	1,894.3
Turkey feed	21.7	22.2	25.1	239.2	321.7
Layer feed	13.0	13.9	15.6	126.2	169.6
Poultry breeding & rearing feed (1)	11.5	12.1	14.8	109.8	146.5
TOTAL (2)	198.4	195.7	235.9	1,896.4	2,532.0
	<i>Percentage change on year</i>				
Broiler chicken feed	6.0%	1.6%	2.1%	-0.1%	-1.5%
Turkey feed	-10.9%	-13.2%	-24.7%	-10.3%	-10.0%
Layer feed	-6.6%	-0.4%	-0.8%	-4.4%	-4.0%
Poultry breeding & rearing feed (1)	21.3%	9.4%	9.4%	3.6%	3.5%
TOTAL (2)	3.7%	0.0%	-1.4%	-1.6%	-2.5%
CEREAL USAGE BY IPUs					
	<i>Amount in thousand tonnes</i>				
Wheat	104.8	101.1	124.3	1,044.7	1,400.2
Barley	7.5	7.6	8.8	62.5	78.5
Others	12.6	13.8	16.8	91.7	123.5
TOTAL	125.0	122.5	149.9	1,198.9	1,602.2
	<i>Percentage change on year</i>				
Wheat	-8.6%	-11.1%	-8.7%	-9.1%	-10.2%
Barley	33.6%	43.5%	37.1%	16.3%	21.0%
TOTAL	2.4%	-1.3%	-2.4%	-2.4%	-3.0%
CEREAL INCORPORATION RATE	62.5%	62.2%	63.0%	62.7%	62.8%

Total poultry feed production

Table 6b

TOTAL PRODUCTION OF POULTRY COMPOUNDS					
	<i>Amount in thousand tonnes</i>				
Broiler chicken feed	265.2	254.4	315.7	2,490.0	3,331.6
Layer feed	91.4	90.9	105.0	864.1	1,155.4
Poultry breeding & rearing feed (1)	45.9	45.2	56.5	418.5	558.2
TOTAL (2)	432.5	421.9	517.9	4,167.3	5,558.9
	<i>Percentage change on year</i>				
Broiler chicken feed	4.7%	0.3%	-0.1%	1.6%	1.8%
Turkey feed	-13.5%	-14.0%	-15.2%	-8.0%	-7.3%
Layer feed	-3.4%	0.6%	0.9%	-1.5%	-1.2%
Poultry breeding & rearing feed (1)	6.9%	4.1%	7.9%	1.2%	0.6%
TOTAL (2)	1.6%	-0.5%	-0.5%	0.0%	0.1%

Note:

(1) Includes Chick Rearing Feed

(2) Total excludes Protein Concentrates and Other Poultry Compounds

* March, June, September and December are 5 week periods. All other months are 4 week periods.

** 2010 is a 53 week statistical year. In order to incorporate the extra week January 2010 was increased to a five week period compared to 4 weeks in January 2009.

Enquiries: Table 6a & 6b - Tom Johnson on ++44(0)1904 455301 Email: tom.johnson@defra.gsi.gov.uk

Table 7

This table has not been updated. Next update on 5 June 2014

**Average compound feed prices by main livestock categories
Great Britain**

(£ per Tonne)

Period	CATTLE & CALF FEED (1)	PIG FEED	POULTRY FEED (2)	SHEEP FEED (3)
Jan to Mar 06	127	148	139	124
Jul to Sep 06	127	152	151	132
Oct to Dec 06	131	158	149	131
Jan to Mar 07	134	162	158	132
Apr to Jun 07	138	164	165	140
Jul to Sep 07	147	173	176	154
Oct to Dec 07	165	197	191	167
Jan to Mar 08	171	209	215	172
Apr to Jun 08	192	218	236	185
Jul to Sep 08	206	219	240	205
Oct to Dec 08	199	210	213	187
Jan to Mar 09	198	210	215	183
Apr to Jun 09	189	214	225	186
Jul to Sep 09	180	209	222	184
Oct to Dec 09	177	204	206	170
Jan to Mar 10	181	210	209	169
Apr to Jun 10	178	208	217	174
Jul to Sept 10	180	214	224	182
Oct to Dec 10	198	236	242	196
Jan to Mar 11	208	253	264	205
Apr to Jun 11	219	261	280	216
Jul to Sept 11	222	258	278	218
Oct to Dec 11	222	248	257	215
Jan to Mar 12	221	248	253	213
Apr to Jun 12	223	259	268	222
Jul to Sep 12	232	270	279	235
Oct to Dec 12	250	284	282	243
Jan to Mar 13	253	291	310	247
Apr to Jun 13	253	288	311	257
Jul to Sept 13	248	274	297	256
Oct to Dec 13	238	260	274	234

Notes:

(1) Excludes prices for Calf Milk Substitutes

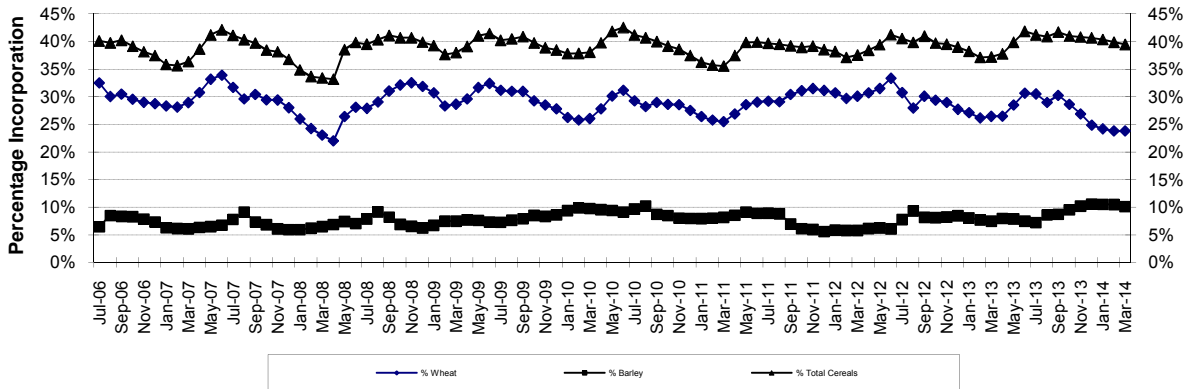
(2) The average poultry feed price is weighted by production of compounds from sales compounders only and excludes production from Integrated Poultry Units.

(3) The above trends in sheep feed prices may not reflect those of individual compounds.

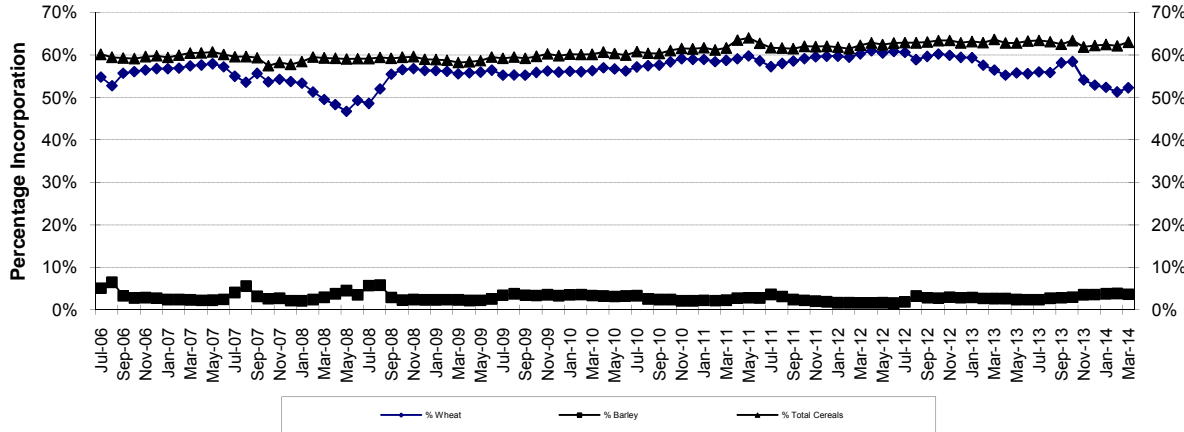
They are weighted by the very seasonal production of compounds in each month.

Summer prices are largely influenced by changes to the prices of finishing compounds, whereas winter prices are largely influenced by breeding compounds.

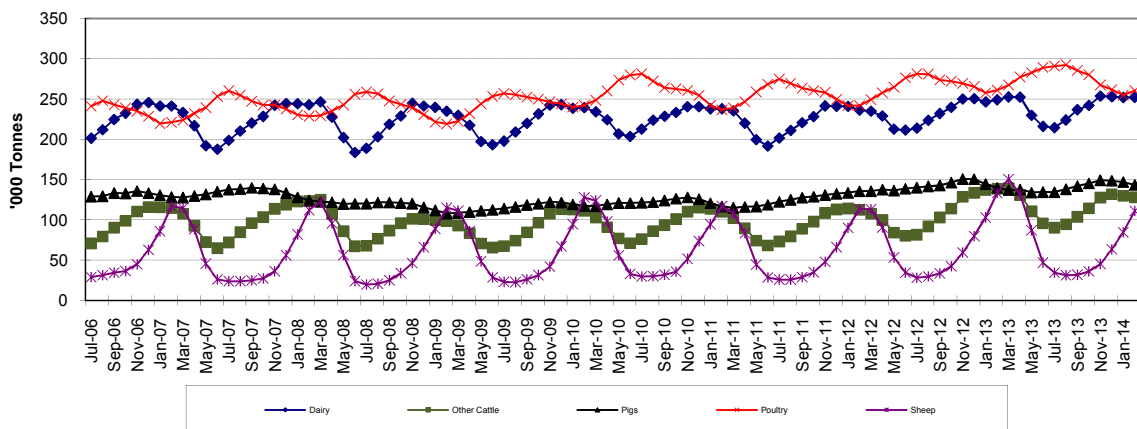
Retail Production of Animal Feedingsuffs - Cereal Incorporation Rates



Integrated Poultry Units - Cereal Incorporation Rates



Retail Production of Animal Feedingsuffs by Sector 3 monthly averages



Animal Feed Statistics for Great Britain - March 2014

Methodology, Notes and Revisions Policy

User Statement

The information in this notice is used by the UK government and the EU as evidence for assessing market conditions and evaluating agricultural policy. Other users include the food and farming industry, academia and the general public. Contact details are available on the front page of this notice, for you to send feedback or ask questions about the information provided.

Survey Methodology

The Retail Production of Animal Feedingstuffs and the Animal Compound Feedingstuffs: Sales Value and Volume are compulsory surveys which collect data under the Statistics of Trade Act 1947.

Retail Production of Animal Feedingstuffs

The data quoted in this release are from the survey returns of all of the major GB animal feed companies. Data on raw material use, stocks and production of the various categories of compound animal feed are recorded. The major producers typically cover 90% of total animal feed production surveyed each month. The remaining smaller companies are sampled annually in December for their figures in the preceding 12 months. The survey data is published each month. Weighting is used for the monthly results to include a suitable estimate for the smaller companies that have not been sampled to provide more robust and realistic monthly estimates. This reduces the chance of a large increase in the crop-year to date totals when the actual annual returns are incorporated into the data. This usually occurs in May when estimates for the previous year are replaced with the actual data; seasonality is also factored in where this is relevant ie sheep and cattle and calf feed. Totals for the current crop year to date are shown (July onwards) as well as the most recent month.

Update: 8 May 2014

2013 data collected from smaller mills has been used as a basis to produce estimates for this statistical notice and future statistical notices. In 2012 we saw an increase in data from smaller mills, compared to historic data, as we conducted a register exercise to obtain data from mills that were not previously surveyed. Due to the register exercise, Animal feed production from smaller mills increased by just over 250,000t in 2012, with an increase in cereal usage of just over 130,000t.

Average Compound Feed Prices by Main Livestock Categories

The data quoted in this release are from the survey returns of all of the major GB animal feed companies. Data on sales relating to the volume of animal feed sold and the value of sales are recorded. This data is collected on a quarterly basis and published in February, May, August and November.

Poultry Feed Production by Integrated Poultry Units

The data quoted in this release are from the voluntary survey returns of all of the major GB poultry feed manufacturers of integrated poultry units. Data on raw material use, stocks and production of the various categories of poultry feed are recorded.

Animal Feed Statistics for Great Britain - March 2014

Methodology, Notes and Revisions Policy

Accuracy and Reliability of the Results

The accuracy of the survey results is very high because a census is carried out of all companies and the typical response rate is 100% per year. Occasionally data is not published when it fails strict disclosure and dominance checks. This ensures that statistics cannot be traced back to a particular company.

Revisions policy

- a. if we have not received survey data from respondents we make an estimate based on their previous returns. These estimates will be replaced with actual survey data when it is received.
- b. survey respondents occasionally supply amended figures for previous periods.
- c. we may also revise the methodology used to raise the survey data to give UK totals.

Publications

This survey is conducted every month and results are typically available five weeks after the collection period. They are published in a statistical release 12 times per year at pre-announced dates and the separate time series spreadsheets are updated monthly too.

Defra statistical releases and details of future publication dates can be viewed on the government website at:

<https://www.gov.uk/government/organisations/department-for-environment-food-rural-affairs/about/statistics>

You may also be interested in our 'Cereal Usage' statistics which are published monthly. These can be found at:

<https://www.gov.uk/government/publications/cereal-usage>

Data from our 'Animal Feed' statistics and 'Cereal Usage' statistics are used to compile the Defra 'Cereal Balance sheet' which is published at different points between July and June each year. For the latest Cereal Balance Sheet please see:

<http://www.hqca.com/markets/supply-and-demand.aspx>

Animal Feed statistics are published in the Defra annual release called 'Agriculture in the UK'. Please see the link below to the latest publication:

<https://www.gov.uk/government/collections/agriculture-in-the-united-kingdom>