

# UKCTRL CHIEF Error Response Message

## Introduction

This document defines the CHIEF UK Customs bespoke message for reporting errors.

## Notes

CHIEF generates a UKCTRL response when:

- a. the EDIFACT handler detects one or more syntax errors in the incoming message.
- b. an invalid message type is received by CHIEF or the associated transaction is not permitted to the trader.
- c. the Import/Export application detects errors in the data.

Errors can be reported at the data element or segment level.

While the Import/Export application reports specific errors in a supplied data element on that element there are a number of situations where the application has to make a choice:

- a. The way in which cross field validation errors are reported is determined by the Import/Export application design.
  - i. Where the check is between data in an inner level segment against data in an outer segment (eg an item against header details), the report is generally on the inner level data element.
  - ii. Where the data is at the same level the report is on the data element which is being validated against the other element(s).
- b. Where a data element is missing the error is reported on an associated mandatory element (eg CPC).

In theory more errors might be identified than can be reported within the UKCTRL message definition or maximum message size supported by the path into CHIEF. In this case as many errors as possible are reported and the remainder omitted.

The message is defined in the order in which the segments occur, and in which order the elements occur within the segments. PLEASE NOTE THE STATUS OF GROUPS/SEGMENTS IN THE MESSAGE, AS THIS WILL EFFECT THE DATA REQUIREMENT. Segments in the formal message definition that are not used are not identified. Elements and component elements that are not required for the variant are identified by element number with a value of "NR" when they occur before the last element that is required but are omitted if they follow. Thus the elements are identified where element or component separators must be transmitted before the value of a subsequent element in the segment. (Note, component and element separators need not be transmitted at the end of a compound element or segment).

Summary of status:

M Mandatory as per UN/EDIFACT

C Conditional

R Required by HMCE (please refer also to group/segment status)

NR Not required by HMCE

nb Group/segment usage shows the user status. "Conditional (Optional)" means that this is required when a business condition is met.

Explanation of Level A separator representation as used in the examples (NB CHIEF uses the level B character set with IS1, 3 and 4 as separators.):

: Separator between components of a compound element.

+ Separator between elements in a segment.

' Segment terminator.

Format of the elements is specified as:

a upper case alphabetic.

an upper case alphanumeric.

n numeric.

Length of the data item is optionally preceded by ".." if the length is variable.

example 1: a1 is alphabetic 1 character.

example 2: an..7 is alphanumeric variable 7 (i.e. 1 to 7 inclusive) characters.

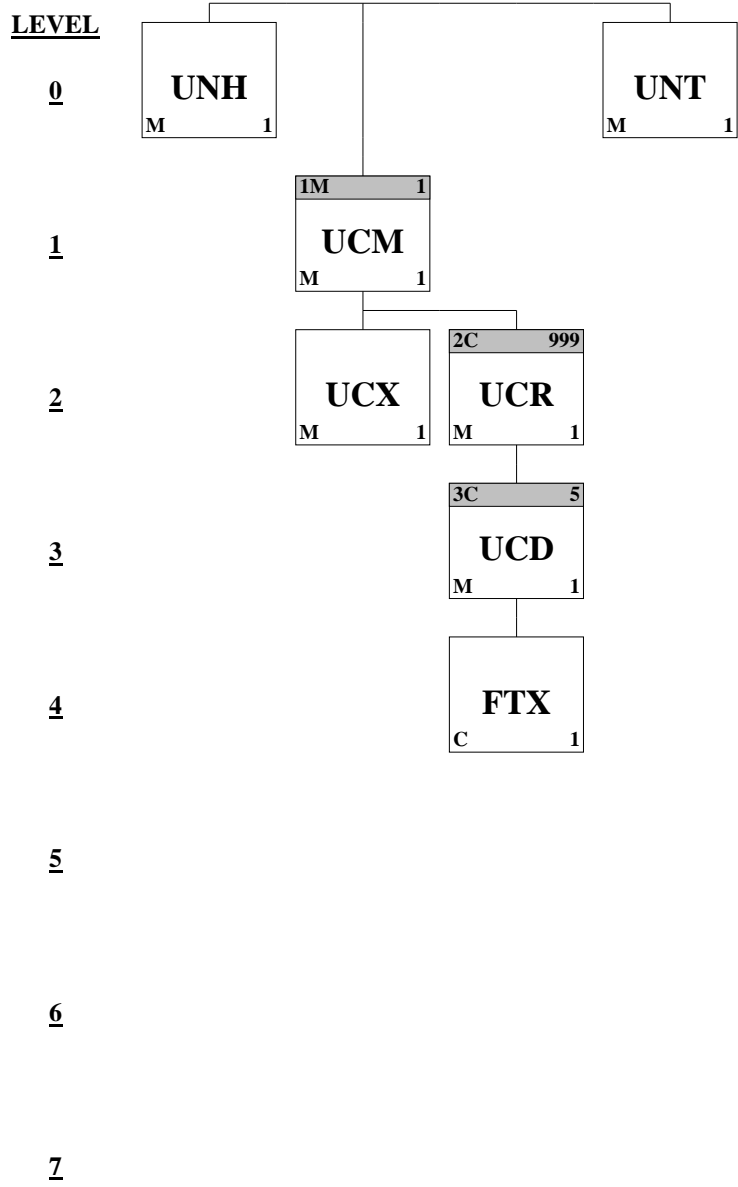
example 3: n4 is numeric 4 characters.

## Details of changes implemented in this version

Further name changes so that references are now generic for any application interfacing with CHIEF (eg CFSP and NES).

Pos No	Seg ID	Name	Base Status	User Status	Max Use	Group Repeat	Notes and Comments
--------	--------	------	-------------	-------------	---------	--------------	--------------------

005	UNH	Message Header	M	M	1
Segment Group 1: UCM-UCX-SG2			M	M	1
015	UCM	Message Response	M	M	1
020	UCX	Message Error Indication	M	M	1
Segment Group 2: UCR			C	C	999
025	UCR	Segment Error Indication	M	M	1
Segment Group 3: UCD-FTX			C	C	5
030	UCD	Data Element Error Indication	M	M	1
245	FTX	Free Text	C	C	1
070	UNT	Message Trailer	M	M	1



**Segment: UNH Message Header**

Position: 005

Group:

Level: 0

Usage: Mandatory

Max Use: 1

Purpose: To head, identify and specify a message.

Notes: eg **UNH+98061514413578+UKCTRL:1:912:UK:109100'****Data element summary**

Data Element	Component Name	Base Attributes	User Attributes
0062	MESSAGE REFERENCE NUMBER	M an..14	M
	Unique message reference assigned by the sender.		
	SYS-MRN an..14	A system generated unique Message Reference Number.	
S009	MESSAGE IDENTIFIER	M	M
	Identification of the type, version etc. of the message being interchanged.		
0065	Message type identifier	M an..6	M an6
	Code identifying a type of message and assigned by its controlling agency.		
	UKCTRL		
0052	Message type version number	M an..3	M an1
	Version number of a message type.		
	1		
0054	Message type release number	M an..3	M an3
	Release number within the current message type version number (0052).		
	912		
0051	Controlling agency	M an..2	M an2
	Code identifying the agency controlling the specification, maintenance and publication of the message type.		

UK

0057

Association assigned code

C an..6 R an6

Code, assigned by the association responsible for the design and maintenance of the message type concerned, which further identifies the message.

HMCE-ASG-CODE an..6 The Associated Assigned Code allocated to the message type/subset by HMCE - "109" followed by this data element (i.e. 109nnn).

109100

**Group: UCM Segment Group 1**

Position: 015

Group:

Level: 1

Usage: Mandatory

Max Use: 1

## Segment summary

	<b>Pos No</b>	<b>Seg ID Name</b>	<b>Req Des</b>	<b>Max Use</b>	<b>Group: Retreat</b>
M	015	UCM Message Response	M	1	
M	020	UCX Message Error Indication	M	1	
		Segment Group 2	C		999

**Segment: UCM Message Response**

Position: 015 (Trigger Segment)

Group: SG1

Level: 1

Usage: Mandatory

Max Use: 1

Purpose: To identify a message in the subject interchange, and to indicate that message's acknowledgement or rejection (action taken), and to identify any error related to the UNH and UNT segments.

Notes: eg **UCM+SDI002:SDI001+CUSDEC:2:912:UN:109210'****NB In this example the response is to a CFSP declaration (i.e. "109210").**

## Data element summary

Data Element	Component	Name	Base Attributes	User Attributes
S012			M	M
	0062	Message reference number	M an..14	M
		Unique message reference assigned by the sender.		
		MSG-MRN an..14 The message reference number from the UNH/UNT segments of the message to which the response applies.		
		NB If the reflected data element is too long or missing (and mandatory) a single "?" is returned; if it contains invalid characters "?"s are returned to the incoming data length.		
	0068	Common access reference	C an..35	C
		Reference serving as a key to relate all subsequent transfers of data to the same business case or file.		
		MSG-SYS-CAR an..35 The message Common Access Reference from the UNH segment of the message to which the response applies.		
		NB If the reflected data element is too long or missing (and mandatory) a single "?" is returned; if it contains invalid characters "?"s are returned to the incoming data length.		
S009		MESSAGE IDENTIFIER	M	M
		Identification of the type, version etc. of the message being interchanged.		
	0065	Message type identifier	M an..6	M
		Code identifying a type of message and assigned by its controlling		



agency.

**MSG-TYPE an..6** The message type from the UNH segment of the message to which the response applies.

NB If the reflected data element is too long or missing (and mandatory) a single "?" is returned; if it contains invalid characters "?"s are returned to the incoming data length.

0052 Message type version number M an..3 M

Version number of a message type.

**MSG-VSN an..3** The message type version from the UNH segment of the message to which the response applies.

NB If the reflected data element is too long or missing (and mandatory) a single "?" is returned; if it contains invalid characters "?"s are returned to the incoming data length.

0054 Message type release number M an..3 M

Release number within the current message type version number (0052).

**MSG-REL-NO an..3** The message release number from the UNH segment of the message to which the response applies.

NB If the reflected data element is too long or missing (and mandatory) a single "?" is returned; if it contains invalid characters "?"s are returned to the incoming data length.

0051 Controlling agency M an..2 M

Code identifying the agency controlling the specification, maintenance and publication of the message type.

**MSG-CNTR-AGNCY an..2** The message controlling agency from the UNH segment of the message to which the response applies.

NB If the reflected data element is too long or missing (and mandatory) a single "?" is returned; if it contains invalid characters "?"s are returned to the incoming data length.

0057 Association assigned code C an..6 R an6

Code, assigned by the association responsible for the design and maintenance of the message type concerned, which further identifies the message.

**MSG-ASG-CODE an..6** The message associated assigned code from the UNH segment of the message to which the response

applies.

NB If the reflected data element is too long or missing (and mandatory) a single "?" is returned; if it contains invalid characters "?"s are returned to the incoming data length.

**Segment: UCX Message Error Indication**

Position: 020

Group: SG1

Level: 2

Usage: Mandatory

Max Use: 1

Purpose:

Notes: **eg UCX+4'****Data element summary**

Data Element	Component Element	Name	Base Attributes	User Attributes
0083		ACTION, CODED	M an..2	M an..3
<p><b>ACTION-CODE an..3</b> Identifies the action taken with the message to which the UKCTRL applies. For error responses to Import declarations the action is always "4" - message rejected.</p> <p>4 This level and all lower levels rejected</p>				
0085		SYNTAX ERROR, CODED	C an..3	C
<p><b>MSG-ERROR-CODE an..3</b> Identifies why the message has been rejected as a whole.</p> <p>3 Message identifier (S009 in UNH) not supported or permitted to the client or end user</p> <p>4 Service Segment missing/invalid</p> <p>5 Trailer count error (0074 in UNT)</p> <p>6 Data segment missing/invalid</p> <p>52 Abort in server (failure in the application processing)</p> <p>53 Transaction derived from the BGM message code is not supported</p> <p>54 Application has reported an error that does not specifically relate to any data in the message</p> <p>55 Attempted security violation (e.g. transaction not permitted to role)</p>				

**Group: UCR Segment Group 2**  
 Position: 025  
 Group: Segment Group 1      Mandatory  
 Level: 2  
 Usage: Conditional (Optional)  
 Max Use: 999

## Segment summary

	Pos No	Seg ID Name	Req Des	Max Use	Group Repeat
M	025	UCR Segment Error Indication	M	1	
		Segment Group 3	C		5

**Segment: UCR Segment Error Indication**

Position: 025 (Trigger Segment)

Group: SG1-SG2

Level: 2

Usage: Mandatory

Max Use: 1

Purpose:

Notes: eg UCR+24'

**Data element summary**

Data Element	Component Element	Name	Base Attributes	User Attributes
0096		SEGMENT POSITION IN MESSAGE	M n..5	M
SEG-NO n..5 The number of the segment in the received order of the message to which the UKCTRL applies - the UNH segment is number one; a value of zero indicates the segment is indeterminate.				
0085		SYNTAX ERROR, CODED	C an..3	C
SEG-ERROR-CODE an..3 Identifies the error in the associated segment. The error reported on a segment may also apply to data in other related segments (i.e. for cross field validation the may only be reported on one of the segments involved).				
	8	Too many data elements		
	9	Mandatory data element missing		

**Group: UCD Segment Group 3**

Position: 030

Group: Segment Group 2      Conditional (Optional)

Level: 3

Usage: Conditional (Optional)

Max Use: 5

## Segment summary

	<b>Pos No</b>	<b>Seg ID Name</b>	<b>Req Des</b>	<b>Max Use</b>	<b>Group: Repeat</b>
M	030	UCD Data Element Error Indication	M	1	
C	245	FTX Free Text	C	1	

**Segment: UCD Data Element Error Indication**

Position: 030 (Trigger Segment)

Group: SG1-SG2-SG3

Level: 3

Usage: Mandatory

Max Use: 1

Purpose:

Notes: eg UCD=5:1+6'

## Data element summary

Data Element	Component Name	Base Attributes	User Attributes
S011	DATA ELEMENT IDENTIFICATION	M	M
	Identification of the position for an erroneous data element. This can be the position of a simple or composite data element in the definition of a segment or a composite data element in the definition of a composite data element.		
0098	Erroneous data element position in segment	M n..3	M
	ELEMENT-NO n..3 The number of the simple or composite data element in the segment identified in the UCR segment - the segment tag is element one; a value of zero indicates the element is indeterminate.		
0104	Erroneous component data element position	C n..3	C
	COMPONENT-NO n..3 The number of the component data element in the compound data element identified by ELEMENT-NO.		
0085	SYNTAX ERROR, CODED	C an..3	C
	DATA-ERROR-CODE an..3 Identifies the error in the associated data element. Only "10" should occur with live (i.e. error free) freight software. Data element attribute errors are likely to need to be reported to the trade users along with the error text for correction or confirmation that FEC challenged data is correct as input		
	10	Data element attribute error	

**Segment: FTX Free Text**

Position: 245

Group: SG1-SG2-SG3

Level: 4

Usage: Conditional (Optional)

Max Use: 1

Purpose: To provide free form or coded text information.

Notes: **eg FTX+AAO+++E565 Commodity does not exist'**

## Data element summary

Data Element	Component Name	Base Attributes	User Attributes
4451	TEXT SUBJECT QUALIFIER	M an..3	M an3
	Code specifying subject of a free text.		
	AAO Error description (free text)		
4453	TEXT FUNCTION, CODED	C an..3	NR
	Code specifying how to handle the text.		
C107	TEXT REFERENCE	C	NR
	Coded reference to a standard text and its source.		
C108	TEXT LITERAL	C	R
	Free text; one to five lines.		
4440	Free text	M an..70	M
	Free text field available to the message sender for information.		
	DATA-ERROR-TEXT an..70	A descriptive text for the associated error.	



**Segment: UNT Message Trailer**

Position: 070

Group:

Level: 0

Usage: Mandatory

Max Use: 1

Purpose: To end and check the completeness of a message.

Notes: eg **UNT+7+98061514413578'**

## Data element summary

Data Element	Component Name	Base Attributes	User Attributes
--------------	----------------	-----------------	-----------------

0074	NUMBER OF SEGMENTS IN A MESSAGE	M n..6	M
------	---------------------------------	--------	---

Control count of number of segments in a message.

SEG-CNT	n..6	The number of segments in the message including the UNH and UNT segments.
---------	------	---

0062	MESSAGE REFERENCE NUMBER	M an..14	M
------	--------------------------	----------	---

Unique message reference assigned by the sender.

SYS-MRN	an..14	A system generated unique Message Reference Number for the UKCTRL message.
---------	--------	--

### Example

CHIEF has received a CUSDEC message (in this case for CFSP, ie "109210") in which the 24th Segment has an error (DATA-ERROR-CODE "6") in the 5th Element. The UCX segment identifies that the message has been rejected (action code "4") and the UCR/UCD/FTX segments identify which Segment and Element is causing the error and a short descriptive text.

Wrapped as transmitted:

```
UNH+98061514413578+UKCTRL:1:912:UK:109100'UCM+SDI002:SDI001+CUSDEC:2:912:UN:109210'UCX+4'UCR+24'UCD+5:1+6'FTX+AAO+++E565 Commodity does not exist'UNT+7+98061514413578'
```

Expanded to individual segments:

```
UNH+98061514413578+UKCTRL:1:912:UK:109100'
```

```
UCM+SDI002:SDI001+CUSDEC:2:912:UN:109210'
```

```
UCX+4'
```

UCR+24'

UCD+5:1+6'

FTX+AAO+++E565 Commodity does not exist'

UNT+7+98061514413578'