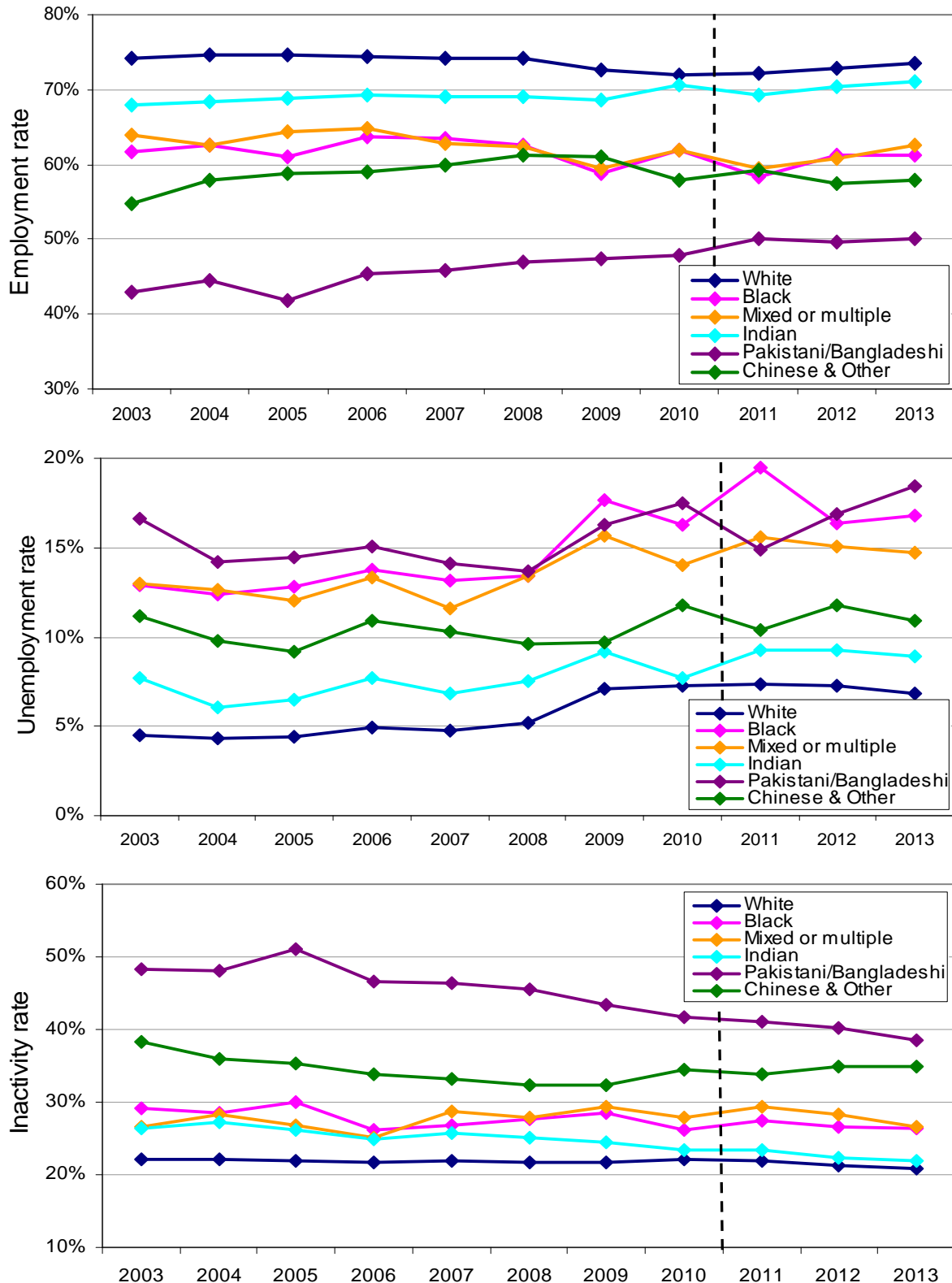


## Ethnic Minorities in the Labour Market



**Figure 1.** Employment, unemployment and inactivity rates from 2003-2013, by ethnic group. Employment and inactivity rates are calculated as a proportion of the total population. Unemployment rates are calculated as a proportion of the economically active population (those in employment or unemployment). The dashed line indicates a change of ethnicity classification in 2011<sup>1</sup>.

<sup>1</sup> In January and April 2011 the questions used to identify a person's ethnic group in the Labour Force Survey were updated in line with the Census. The impact on the individual's responses and ethnic group classification is unclear and therefore trend analysis spanning the 2011 change should be treated with caution.

## Labour Market statistics: changes from 2012-2013

Key Facts – 2013 data		Ethnic Minorities	Total Population
<b>Employment</b> (16-64)	<b>Rate</b>	60.1%	71.9%
	<i>Change on year (%pts)</i>	+0.3	+0.7
<b>Unemployment</b> (16+)	<b>Rate</b>	13.5%	7.6%
	<i>Change on year (%pts)</i>	+0.1	-0.4
<b>Inactivity</b> (16-64)	<b>Rate</b>	30.4	22.1
	<i>Change on year (%pts)</i>	-0.4	-0.4

**Table 1.** 2013 employment, unemployment and inactivity rates for the ethnic minority and overall populations as a whole. Changes relative to 2012 are also shown.

## Ethnic minority employment by sector: 2013 data

Sectors with lowest relative ethnic minority participation	Relative employment proportion compared to overall population (ppts)	Relative employment proportion compared to white population (ppts)
Construction	-3.5	-3.9
Manufacturing	-3.1	-3.5
Education	-2.3	-2.6
Public administration and defence	-1.3	-1.5
Arts, entertainment and recreation	-0.9	-1.0

**Table 2.** Relative employment proportions by sector for ethnic minorities, compared to the overall and white populations.

Sectors with highest relative ethnic minority participation	Relative employment proportion compared to overall population (ppts)	Relative employment proportion compared to white population (ppts)
Human health and social work	+4.4	+4.9
Accommodation and food service	+2.8	+3.1
Transportation and storage	+2.1	+2.3
Wholesale and retail trade	+1.6	+1.8
Information and communication	+1.2	+1.4

**Table 3.** Relative employment proportions by sector for ethnic minorities, compared to the overall and white populations.

The numbers show the difference between the proportion of the ethnic minority population and the proportion of the overall or white population who are employed in a particular sector.

Where the proportion of the ethnic minority population employed in a particular sector is lower than in the overall population, the number shown will be negative. Where a greater proportion of the ethnic minority population are employed in a particular sector, the number will be positive.

## June 2014 publication

The whole publication, containing full notes on the data can be found here: <https://www.gov.uk/government/publications/labour-market-status-by-ethnic-group-june-2014>