



Animal Feed Statistics for Great Britain - September 2013

Statistics on GB Animal Feed include data for the period July, August and September with percentage changes for the corresponding periods last year (tables 1 to 4 and table 6).

Statistics for the quarterly average price series show data from the period January to March 2006 up to the period July to Sep 2013 (table 7).

Key points:

- In September 2013 the total GB retail production of animal feed was up 4.1% compared with September 2012, with poultry feed being particularly strong.
- In September 2013 the total GB raw material usage in the retail production of animal feed was up 4.4% compared with September 2012, with a slightly higher cereal incorporation rate. There was proportionately more barley being used.
- In September 2013 the total GB integrated feed production was down -0.5% compared with September 2012
- For the period July to Sep 2013 quarterly average prices of animal feedingstuffs were as follows:-

Cattle and calf feed -	£248 per Tonne
Pig feed -	£274 per Tonne
Poultry feed -	£297 per Tonne
Sheep feed -	£258 per Tonne

- For cattle/calf and poultry feed, this was the first fall in price since January 2012.

Revisions this month:

Please note there is a level of estimation due to Defra receiving revised backdated data for the retail animal feed survey and integrated poultry units (IPU's).

Please check future releases or datasets for up to date information.

These results are released monthly and will be next updated at 09:30 on 5th December 2013. Average prices of animal feedingstuffs will be updated quarterly, the next update will be at 09:30 on 6th February 2014

Enquiries to:

Tom Johnson, Department for Environment, Food and Rural Affairs, Room 301, Foss House, Kings Pool, 1-2 Peasholme Green, York YO1 7PX, Tel: 01904 455301

Email: Tom.Johnson@defra.gsi.gov.uk

Email: crops-statistics@defra.gsi.gov.uk

A National Statistics publication. National Statistics are produced to high professional standards. They undergo regular quality assurance reviews to ensure that they meet customer needs. They are produced free from any political interference. For general enquiries about National Statistics, contact the National Statistics Public Enquiry Service: tel. 0845 601 3034 email info@statistics.gov.uk. You can also find National Statistics on the internet at www.statistics.gov.uk.



Animal Feed Statistics for Great Britain - September 2013

Contents:	Page
Retail Production of Animal Feedingstuffs in Great Britain	3-4
Raw Materials Usage in Animal Feedingstuffs in Great Britain	5-6
Analysis of Retail Production by Company Type	7
Poultry Feed Production	8
Average Compound Feed Prices by Main Livestock categories	9
Published Charts	10
Methodology, Notes and Revisions Policy	11-12

Results are typically available five weeks after the monthly collection period. They are published in a statistical release 12 times per year. Historic data from January 1997 data is available in a separate time series spreadsheet that is published at:

To access the historic datasets for the GB Retail Production of Animal Feedingstuffs (tables 1 to 4), the Integrated Feed Production (table 6a) and the quarterly average prices and historic monthly average prices of animal feedingstuffs please see the following link:

<https://www.gov.uk/government/publications/animal-feed-production>

The datasets are the last 3 documents in the list.

Table 1

**Retail Production of Animal Feedingstuffs
in Great Britain**

July to September 2013

Thousand tonnes

	JULY	AUGUST	SEPTEMBER *	Crop Year JULY TO SEPTEMBER	12 Month Moving Total
CATTLE AND CALF FEED	295.2	313.5	349.7	958.5	4,284.3
All calf feed (3)	12.1	13.3	15.9	41.3	191.0
Compounds for dairy cows	156.4	166.4	180.9	503.7	2,020.3
Blends for dairy cows	51.6	56.7	63.5	171.7	848.6
All other cattle feed	46.0	47.5	53.4	146.8	733.9
All other cattle blends	25.7	25.7	31.1	82.5	423.6
Protein concentrates (1)	3.5	4.0	5.0	12.4	66.9
PIG FEED	132.8	133.6	151.1	417.5	1,697.5
Pig starters & creep feed	6.0	6.0	5.9	18.0	71.2
Link/early grower feeds	6.0	6.0	5.7	17.7	77.5
Pig growing feed	33.1	34.3	35.8	103.2	406.7
Pig finishing feed	55.1	55.6	67.4	178.2	725.1
Pig breeding feed	31.7	30.9	34.8	97.3	407.0
Protein Concentrates (1)	0.8	0.8	1.4	3.0	10.1
POULTRY FEED (2)	284.0	274.8	318.3	877.0	3,315.6
Chick rearing feed	12.3	11.7	11.6	35.5	139.3
Layer feed	77.7	76.1	90.4	244.2	994.1
Broiler chicken feed	113.8	114.4	142.8	371.0	1,429.3
Poultry breeding & rearing feed	19.0	19.3	25.1	63.4	266.7
Turkey feed	11.5	14.8	24.2	50.5	198.3
All other poultry feed	49.7	38.4	24.1	112.1	286.7
Protein concentrates (1)	0.1	0.1	0.1	0.3	1.2
SHEEP FEED	30.2	30.0	32.4	92.6	930.3
Compounds for breeding sheep	5.0	5.1	5.3	15.5	443.6
Blends for breeding sheep	1.0	1.4	1.5	3.8	30.3
Compounds for growing and finishing sheep	20.0	18.2	19.5	57.8	388.2
Blends for growing and finishing sheep	3.8	4.8	5.3	13.9	61.0
Protein concentrates (1)	0.4	0.5	0.8	1.6	7.1
HORSE FEED	11.5	12.1	17.0	40.6	199.6
OTHER COMPOUNDS, BLENDS AND CONCENTRATES (1)	38.4	43.2	44.4	126.0	388.0
TOTAL COMPOUNDS, BLENDS AND CONCENTRATES (1)	792.2	807.2	912.8	2,512.1	10,815.4
OTHER PROCESSED FEEDINGSTUFFS FOR DELIVERY IN STRAIGHT FORM	25.3	22.8	11.7	59.8	176.3
Flaked maize and other maize products	1.0	1.0	1.2	3.2	15.3
Molassed feedingstuffs	6.3	1.1	1.9	9.3	31.3
All others	18.0	20.7	8.5	47.2	129.6
TOTAL ALL FEEDINGSTUFFS	817.5	830.0	924.4	2,571.9	10,991.7

(1) 'Protein Concentrates' includes Balancers.

(2) All production by Integrated Poultry Units are excluded from this table. These data are contained in Table 6a.

(3) Calf feed includes calf milk substitutes.

* March, June, September and December are 5 week periods. All other months are 4 week periods. There were 53 weeks in the Statistical year 2010. In order to incorporate the change January 2010 was increased to a 5 week period compared to 4 weeks in 2009. Figures rounded to the nearest final digit may not add to the totals as shown.

Enquiries: Table 1 - Tom Johnson on ++44(0)1904 455301 Email: tom.johnson@defra.gsi.gov.uk

Table 2

**Retail Production of Animal Feedingstuffs
in Great Britain**

Percentage change over Corresponding period in 2012

	JULY	AUGUST	SEPTEMBER *	Crop Year JULY TO SEPTEMBER	12 Month Moving Total
CATTLE AND CALF FEED	1.1%	2.4%	0.3%	1.2%	8.9%
Compounds for dairy cows	1.3%	4.6%	3.9%	3.3%	2.8%
Blends for dairy cows	-7.9%	-1.0%	-9.1%	-6.2%	9.5%
All other cattle feed	8.6%	1.9%	-6.8%	0.4%	19.0%
All other cattle blends	16.5%	4.0%	15.5%	11.9%	26.1%
Protein concentrates (1)	-17.1%	-10.1%	0.6%	-8.4%	5.7%
PIG FEED	-1.9%	-3.6%	0.3%	-1.7%	3.9%
Pig starters & creep feed	6.0%	-1.8%	-6.3%	-0.9%	17.3%
Link/early grower feeds	-6.3%	-7.3%	-18.0%	-10.7%	6.8%
Pig growing feed	2.8%	1.4%	-1.3%	0.9%	4.2%
Pig finishing feed	-0.7%	-4.6%	3.3%	-0.5%	6.6%
Pig breeding feed	-9.6%	-7.0%	-0.9%	-5.8%	-3.4%
Protein Concentrates (1)	57.8%	14.0%	86.8%	53.4%	26.5%
POULTRY FEED (2)	2.0%	2.4%	7.7%	4.1%	5.7%
Chick rearing feed	-9.7%	-6.7%	-9.9%	-8.8%	-10.4%
Layer feed	-2.2%	-5.4%	8.8%	0.5%	1.6%
Broiler chicken feed	8.9%	10.2%	10.5%	9.9%	10.7%
Poultry breeding & rearing feed	-7.9%	-3.6%	2.5%	-2.7%	9.1%
Turkey feed	-5.6%	-0.2%	9.5%	2.8%	6.8%
All other poultry feed	3.2%	5.0%	1.0%	3.3%	2.5%
Protein concentrates (1)	-18.0%	25.8%	35.5%	14.5%	6.3%
SHEEP FEED	13.0%	4.1%	-2.2%	4.4%	27.1%
Compounds for breeding sheep	39.3%	17.0%	-7.9%	12.4%	29.9%
Blends for breeding sheep	-12.5%	-15.8%	-12.9%	-13.9%	27.7%
Compounds for growing and finishing sheep	17.0%	5.8%	0.5%	7.5%	29.1%
Blends for growing and finishing sheep	-15.3%	-4.3%	-13.1%	-10.9%	1.8%
Protein concentrates (1)	-5.1%	-16.4%	406.3%	48.3%	12.0%
HORSE FEED	15.0%	4.9%	15.1%	11.8%	14.3%
OTHER COMPOUNDS, BLENDS AND CONCENTRATES (1)	4.0%	0.4%	31.8%	10.8%	2.8%
TOTAL COMPOUNDS, BLENDS AND CONCENTRATES (1)	1.6%	1.4%	4.1%	2.4%	8.3%
OTHER PROCESSED FEEDINGSTUFFS FOR DELIVERY IN STRAIGHT FORM	135.9%	111.2%	5.8%	83.6%	32.8%
Flaked maize and other maize products	-18.2%	-13.9%	3.6%	-9.6%	3.7%
Molassed feedingstuffs	596.4%	4.2%	5.1%	148.0%	91.7%
All others	108.3%	141.5%	6.2%	87.1%	27.5%
TOTAL ALL FEEDINGSTUFFS	3.4%	2.8%	4.1%	3.5%	8.6%

(1) 'Protein Concentrates' includes Balancers.

(2) All production by Integrated Poultry Units are excluded from this table. These data are contained in Table 6a.

(3) Calf feed includes calf milk substitutes.

Enquiries: Table 2 - Tom Johnson on ++44(0)1904 455301 Email: Tom.Johnson@defra.gsi.gov.uk

**Raw materials usage in retail production of animal feedingstuffs
in Great Britain**

July to September 2013

Thousand tonnes

	JULY	AUGUST	SEPTEMBER *	Crop Year JULY SEPTEMBER	12 Month Moving Total
Wheat	248.3	239.6	282.8	770.6	3,106.7
Barley	60.7	73.3	83.5	217.5	898.4
Oats	4.9	6.5	6.0	17.4	81.7
Whole and flaked maize	24.0	21.6	19.9	65.5	262.0
Rice bran extractions	1.0	1.1	1.0	3.2	14.6
Maize gluten feed (1)	2.5	2.3	3.7	8.4	29.8
Cereals by-products	117.3	118.8	129.2	365.3	1,628.6
of which:					
Wheat Feed	80.8	80.5	85.2	246.5	1,041.1
Other cereals by-products	16.7	16.6	19.4	52.8	218.8
Distillery by-products	19.8	21.6	24.6	66.0	368.5
Whole oilseeds	3.9	5.8	6.6	16.3	56.7
Oilseed rape cake and meal	42.3	52.8	61.3	156.5	768.7
Soya cake and meal	82.2	81.2	88.8	252.3	1,089.8
Sunflower cake and meal	22.3	18.2	20.6	61.1	330.3
Other oilseed cake and meal (2)	34.1	34.9	36.3	105.4	535.0
Field beans	3.1	3.4	4.3	10.8	45.1
Field peas	1.9	1.9	2.3	6.1	27.7
Dried sugar beet pulp	21.4	22.3	24.9	68.6	334.4
Molasses	23.5	23.3	25.3	72.1	354.7
Citrus and other fruit pulp	2.1	2.4	2.5	7.0	31.6
All meal (Fish, Poultry and other meal) (3)	10.3	10.4	12.1	32.9	97.4
Minerals	31.4	31.7	36.8	99.9	424.5
Oil and fat	21.4	21.6	23.7	66.7	241.8
Protein concentrates (4)	0.7	0.9	1.0	2.7	11.7
Other materials (5)	43.3	40.6	47.1	131.0	398.0
Confectionery by-products	17.8	18.7	18.3	54.8	258.1
TOTAL RAW MATERIALS USED	820.5	833.1	938.1	2,591.8	11,026.9
Cereal Incorporation Rate	41.2%	40.9%	41.8%	41.3%	39.4%

Please Note: All raw materials usage by Integrated Poultry Units has now been excluded from this table.
The cereals usage is now included in Table 6.

- (1) Protein content 25% or below.
(2) Cake and meal derived from Copra (coconut), Palm kernels, Shea and Illipe nuts, or any other oilseed or nuts not included in the cakes and meals above.
(3) Comprises feather meal, dried blood and other animal by-products except fat. This definition may include meals used in feed intended for animals to which the EU ban on feeding processed animal protein does not apply.
(4) Ready prepared products for incorporation in animal feed includes balancers.
(5) Includes all raw materials, (including other grains) not listed elsewhere.
* March, June, September and December are 5 week periods. All other months are 4 week periods.
** 2004 is a 53 week statistical year. In order to incorporate the extra week January 2004 was increased to a five week period compared to 4 weeks in January 2005.

Enquiries: Table 3 - Tom Johnson on ++44(0)1904 455301 Email: tom.johnson@defra.gsi.gov.uk

**Raw materials usage in retail production of animal feedingstuffs
in Great Britain**

Table 4

Percentage change over corresponding period in 2012

	JULY	AUGUST	SEPTEMBER *	Crop Year JULY SEPTEMBER	12 Month Moving Total
Wheat	1.2%	4.8%	4.6%	3.5%	-0.7%
Barley	-2.5%	-4.0%	13.3%	2.4%	34.1%
Oats	19.2%	65.9%	5.0%	26.6%	40.4%
Whole and flaked maize	102.4%	29.0%	9.3%	39.9%	100.0%
Rice bran extractions	-28.9%	-37.7%	-32.5%	-33.2%	-12.9%
Maize gluten feed (1)	-24.5%	-36.4%	2.2%	-19.4%	-65.7%
Cereals by-products	9.2%	6.3%	5.6%	7.0%	18.1%
of which:					
Wheat feed	10.8%	8.8%	6.9%	8.8%	20.7%
Other cereals by-products	42.2%	19.3%	28.5%	29.3%	40.1%
Distillery by-products	-13.1%	-9.2%	-10.8%	-11.0%	2.3%
Whole oilseeds	-4.1%	4.5%	18.6%	7.3%	13.1%
Oilseed rape cake and meal	-7.6%	4.1%	1.8%	-0.2%	7.6%
Soya cake and meal	-13.0%	-12.8%	-11.3%	-12.4%	-5.0%
Sunflower cake and meal	-19.8%	-36.1%	-26.0%	-27.4%	-8.2%
Other oilseed cake and meal (2)	-0.2%	-0.6%	-8.6%	-3.4%	11.5%
Field beans	5.5%	-6.8%	1.9%	-0.1%	-11.8%
Field peas	-24.8%	-12.7%	8.6%	-10.6%	-1.6%
Dried sugar beet pulp	1.8%	3.5%	-0.3%	1.6%	22.5%
Molasses	16.5%	6.0%	2.1%	7.7%	18.8%
Citrus and other fruit pulp	-53.2%	-46.8%	-45.9%	-48.6%	-44.2%
All meal (Fish, Poultry and other meal) (3)	9.1%	8.9%	42.1%	19.3%	-0.9%
Minerals	5.9%	4.0%	8.9%	6.3%	8.3%
Oil and fat	37.8%	31.3%	39.1%	36.1%	33.4%
Protein concentrates (4)	-32.2%	-17.5%	-13.7%	-20.9%	-11.4%
Other materials (5)	62.0%	45.4%	78.9%	61.8%	24.8%
Confectionery by-products	-20.0%	-16.4%	-16.2%	-17.6%	0.8%
TOTAL RAW MATERIALS USED	2.8%	1.9%	4.4%	3.1%	8.2%

Please Note: All raw materials usage by Integrated Poultry Units has now been excluded from this table. The cereals usage is now included in Table 6.

- (1) Protein content 25% or below.
- (2) Cake and meal derived from Copra (coconut), Palm kernels, Shea and Illipe nuts, or any other oilseed or nuts not included in the cakes and meals above.
- (3) Comprises feather meal, dried blood and other animal by-products except fat. This definition may include meals used in feed intended for animals to which the EU ban on feeding processed animal protein does not apply.
- (4) Ready prepared products for incorporation in animal feed including balancers.
- (5) Includes all raw materials, (including other grains) not listed elsewhere.

Enquiries: Table 4 - Tom Johnson on ++44(0)1904 455301 Email: tom.johnson@defra.gsi.gov.uk

Table 5

**Analysis of retail production by company type
September 2013**

	INDEPENDENTS		CO-OPERATIVES & NATIONALS		G. B. TOTAL	
	MONTH % OF TOTAL	CROP YR % OF TOTAL	MONTH % OF TOTAL	CROP YR % OF TOTAL	MONTH 000 TONNES	CROP YR 000 TONNES
CATTLE AND CALF FEED	64.2%	62.9%	35.8%	37.1%	250.2	691.9
Calf feed	70.1%	68.8%	29.9%	31.2%	15.9	41.3
Compounds for dairy cows	63.8%	62.1%	36.2%	37.9%	180.9	503.7
All other cattle feed	63.7%	63.9%	36.3%	36.1%	53.4	146.8
PIG FEED	28.6%	28.8%	71.4%	71.2%	149.6	414.4
Pig starters & creep feed	71.4%	68.2%	28.6%	31.8%	5.9	18.0
Link/early grower feeds	77.8%	74.3%	22.2%	25.7%	5.7	17.7
Pig growing feed	26.7%	27.1%	73.3%	72.9%	35.8	103.2
Pig finishing feed	23.7%	23.9%	76.3%	76.1%	67.4	178.2
Pig breeding feed	24.5%	24.2%	75.5%	75.8%	34.8	97.3
POULTRY FEED	21.9%	24.3%	78.1%	75.7%	318.1	876.7
Chick rearing feed	20.5%	21.7%	79.5%	78.3%	11.6	35.5
Layer feed	19.5%	20.7%	80.5%	79.3%	90.4	244.2
Poultry breeding & rearing feed	13.4%	14.5%	86.6%	85.5%	25.1	63.4
Broiler chicken, turkey and all other poultry feed	24.3%	27.3%	75.7%	72.7%	191.1	533.7
SHEEP FEED	68.3%	64.5%	31.7%	35.5%	24.9	73.3
Compounds for breeding sheep	53.0%	50.2%	47.0%	49.8%	5.3	15.5
Compounds for growing & finishing sheep	72.5%	68.3%	27.5%	31.7%	19.5	57.8
HORSE FEED	32.3%	32.9%	67.7%	67.1%	17.0	40.6
OTHER COMPOUNDS, BLENDS AND CONCENTRATES (1)	50.9%	50.8%	49.1%	49.2%	153.0	415.2
TOTAL COMPOUNDS, BLENDS AND CONCENTRATES (1)	40.9%	41.4%	59.1%	58.6%	912.8	2,512.1
OTHER PROCESSED FEEDINGSTUFFS FOR DELIVERY IN STRAIGHT FORM	97.3%	73.6%	2.7%	26.4%	11.7	59.8
TOTAL ALL FEEDINGSTUFFS	41.6%	42.1%	58.4%	57.9%	924.4	2,571.9

(1) 'Protein Concentrates' includes Balancers.

Figures rounded to the nearest final digit may not add to the totals as shown.

Enquiries: Table 5 - Tom Johnson on ++44(0)1904 455301

Email: tom.johnson@defra.gsi.gov.uk

© Crown Copyright, 2013

pg. 7

**Poultry feed production by integrated poultry units (IPU's)
in Great Britain**

July to September 2013

Table 6a

	JULY	AUGUST	SEPTEMBER *	Crop Year JULY TO SEPTEMBER	12 Month Moving total
FEED PRODUCED BY IPUs					
	<i>Amount in thousand tonnes</i>				
Broiler chicken feed	162.9	167.7	207.6	538.2	2,108.5
Turkey feed	25.1	26.2	29.7	80.9	339.9
Layer feed	12.8	13.6	16.7	43.1	175.1
Poultry breeding & rearing feed (1)	11.3	11.6	13.2	36.0	142.5
TOTAL (2)	212.1	219.0	267.2	698.2	2,766.0
	<i>Percentage change on year</i>				
Broiler chicken feed	-3.6%	0.7%	1.6%	-0.3%	3.4%
Turkey feed	-3.9%	-12.0%	-13.8%	-10.4%	-1.5%
Layer feed	-4.8%	-5.0%	6.6%	-0.8%	-3.7%
Poultry breeding & rearing feed (1)	1.9%	4.5%	-6.0%	-0.4%	2.2%
TOTAL (2)	-3.4%	-1.2%	-0.5%	-1.6%	2.2%
CEREAL USAGE BY IPUs					
	<i>Amount in thousand tonnes</i>				
Wheat	119.2	122.7	155.1	397.0	1,589.9
Barley	5.3	6.1	7.8	19.2	77.0
Others	10.0	9.3	4.9	24.1	77.0
TOTAL	134.5	138.1	167.8	440.4	1,743.9
	<i>Percentage change on year</i>				
Wheat	-10.1%	-5.9%	-2.9%	-6.1%	-2.5%
Barley	19.4%	-16.0%	-0.7%	-1.9%	38.3%
TOTAL	-2.5%	-0.8%	-0.7%	-1.3%	2.6%
CEREAL INCORPORATION RATE	62.8%	62.5%	62.4%	62.5%	62.5%

Total poultry feed production

Table 6b

	JULY	AUGUST	SEPTEMBER *	Crop Year JULY TO SEPTEMBER	12 Month Moving total
TOTAL PRODUCTION OF POULTRY COMPOUNDS					
	<i>Amount in thousand tonnes</i>				
Broiler chicken feed	276.7	282.1	350.4	909.2	3,537.8
Layer feed	90.5	89.6	107.1	287.3	1,169.2
Poultry breeding & rearing feed (1)	42.6	42.5	49.8	134.9	548.5
TOTAL (2)	446.4	455.2	561.2	1,462.8	5,793.7
	<i>Percentage change on year</i>				
Broiler chicken feed	1.2%	4.4%	5.1%	3.6%	6.2%
Turkey feed	-4.4%	-8.1%	-4.7%	-5.7%	1.4%
Layer feed	-2.6%	-5.3%	8.5%	0.3%	0.7%
Poultry breeding & rearing feed (1)	-6.0%	-2.5%	-2.9%	-3.8%	1.7%
TOTAL (2)	-0.8%	0.5%	3.9%	1.4%	4.2%

Note:

(1) Includes Chick Rearing Feed

(2) Total excludes Protein Concentrates and Other Poultry Compounds

* March, June, September and December are 5 week periods. All other months are 4 week periods.

** 2010 is a 53 week statistical year. In order to incorporate the extra week January 2010 was increased to a five week period compared to 4 weeks in January 2009.

Enquiries: Table 6a & 6b - Tom Johnson on ++44(0)1904 455301 Email: tom.johnson@defra.gsi.gov.uk

This table has been updated. Next update on 6th February 2014

**Average compound feed prices by main livestock categories
Great Britain**

(£ per Tonne)

Period	CATTLE & CALF FEED (1)	PIG FEED	POULTRY FEED (2)	SHEEP FEED (3)
Jan to Mar 06	127	148	139	124
Jul to Sep 06	127	152	151	132
Oct to Dec 06	131	158	149	131
Jan to Mar 07	134	162	158	132
Apr to Jun 07	138	164	165	140
Jul to Sep 07	147	173	176	154
Oct to Dec 07	165	197	191	167
Jan to Mar 08	171	209	215	172
Apr to Jun 08	192	218	236	185
Jul to Sep 08	206	219	240	205
Oct to Dec 08	199	210	213	187
Jan to Mar 09	198	210	215	183
Apr to Jun 09	189	214	225	186
Jul to Sep 09	180	209	222	184
Oct to Dec 09	177	204	206	170
Jan to Mar 10	181	210	209	169
Apr to Jun 10	178	208	217	174
Jul to Sept 10	180	214	224	182
Oct to Dec 10	198	236	242	196
Jan to Mar 11	208	253	264	205
Apr to Jun 11	219	261	280	216
Jul to Sept 11	222	258	278	218
Oct to Dec 11	222	248	257	215
Jan to Mar 12	221	248	253	213
Apr to Jun 12	223	259	268	222
Jul to Sep 12	232	270	279	235
Oct to Dec 12	250	284	282	243
Jan to Mar 13	253	291	310	247
Apr to Jun 13	253	288	311	257
Jul to Sept 13	248	274	297	258

Notes:

(1) Excludes prices for Calf Milk Substitutes

(2) The average poultry feed price is weighted by production of compounds from sales compounders only and excludes production from Integrated Poultry Units.

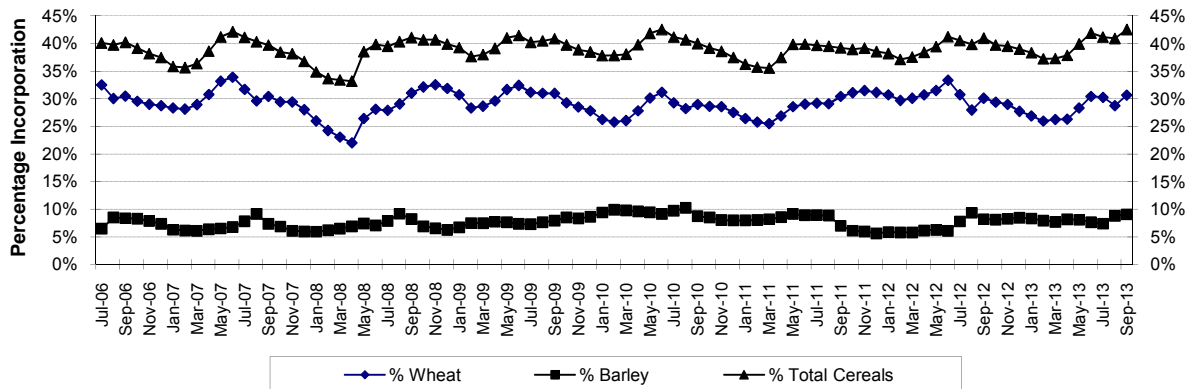
(3) The above trends in sheep feed prices may not reflect those of individual compounds.

They are weighted by the very seasonal production of compounds in each month.

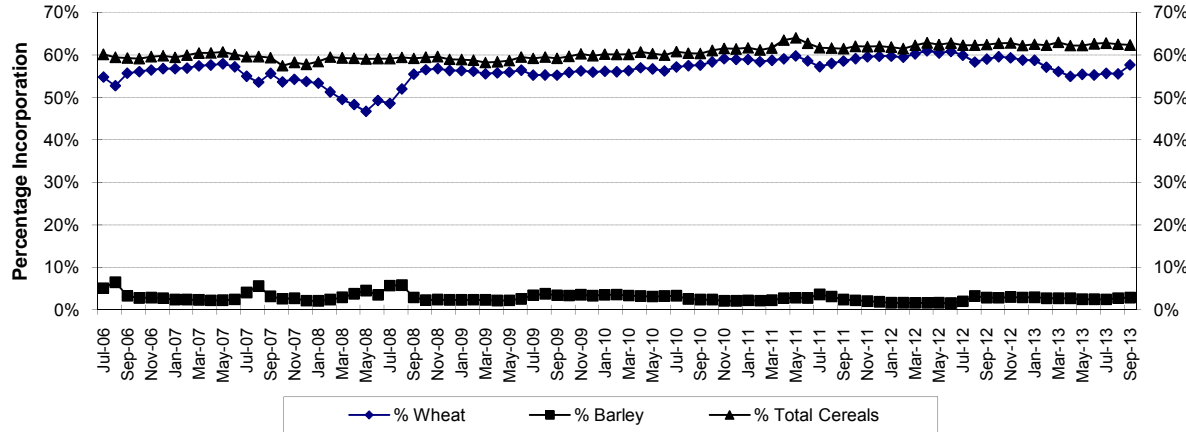
Summer prices are largely influenced by changes to the prices of finishing compounds,

whereas winter prices are largely influenced by breeding compounds.

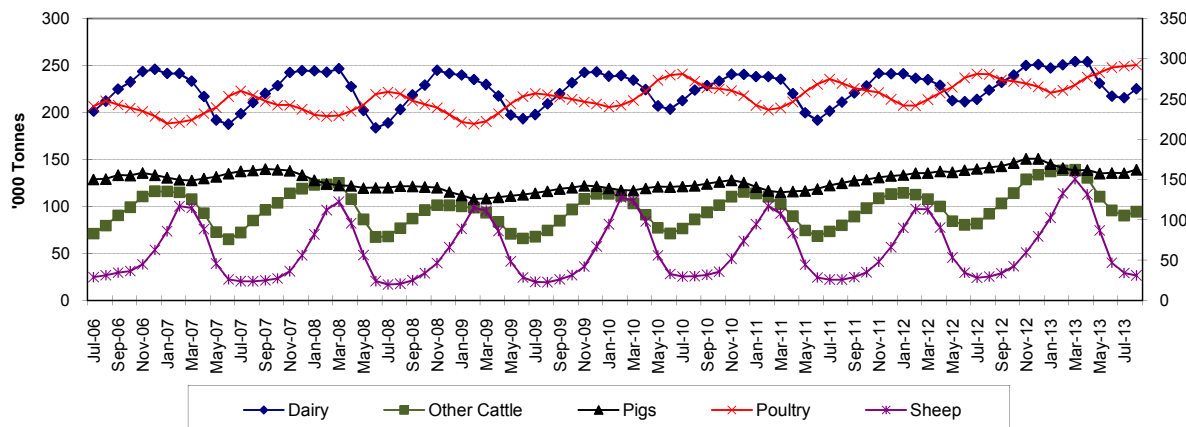
Retail Production of Animal Feedingsuffs - Cereal Incorporation Rates



Integrated Poultry Units - Cereal Incorporation Rates



Retail Production of Animal Feedingsuffs by Sector 3 monthly averages



Animal Feed Statistics for Great Britain - September 2013

Methodology, Notes and Revisions Policy

User Statement

The information in this notice is used by the UK government and the EU as evidence for assessing market conditions and evaluating agricultural policy. Other users include the food and farming industry, academia and the general public. Contact details are available on the front page of this notice, for you to send feedback or ask questions about the information provided.

Survey Methodology

The Retail Production of Animal Feedingstuffs and the Animal Compound Feedingstuffs: Sales Value and Volume are compulsory surveys which collect data under the Statistics of Trade Act 1947.

Retail Production of Animal Feedingstuffs

The data quoted in this release are from the survey returns of all of the major GB animal feed companies. Data on raw material use, stocks and production of the various categories of compound animal feed are recorded. The major producers typically cover 90% of total animal feed production surveyed each month. The remaining smaller companies are sampled annually in December for their figures in the preceeding 12 months. The survey data is published each month. Weighting is used for the monthly results to include a suitable estimate for the smaller companies that have not been sampled to provide more robust and realistic monthly estimates. This reduces the chance of a large increase in the crop-year to date totals when the actual annual returns are incorporated into the data. This usually occurs in May when estimates for the previous year are replaced with the actual data; seasonality is also factored in where this is relevant ie sheep and cattle and calf feed. Totals for the current crop year to date are shown (July onwards) as well as the most recent month.

Update: 10th May 2013

2012 data collected from smaller mills has been used as a basis to produce estimates for this statistical notice and future statistical notices. We have seen an increase in 2012 data from smaller mills as we conducted a register exercise to obtain data from mills that were not previously surveyed. Animal feed production from smaller mills has increased by just over 250,000t with an increase in cereal usage of just over 130,000t.

Average Compound Feed Prices by Main Livestock Categories

The data quoted in this release are from the survey returns of all of the major GB animal feed companies. Data on sales relating to the volume of animal feed sold and the value of sales are recorded. This data is collected on a quarterly basis and published in February, May, August and November.

Poultry Feed Production by Integrated Poultry Units

The data quoted in this release are from the voluntary survey returns of all of the major GB poultry feed manufacturers of integrated poultry units. Data on raw material use, stocks and production of the various categories of poultry feed are recorded.

Animal Feed Statistics for Great Britain - September 2013

Methodology, Notes and Revisions Policy

Accuracy and Reliability of the Results

The accuracy of the survey results is very high because a census is carried out of all companies and the typical response rate is 100% per year. Occasionally data is not published when it fails strict disclosure and dominance checks. This ensures that statistics cannot be traced back to a particular company.

Revisions policy

- a. if we have not received survey data from respondents we make an estimate based on their previous returns. These estimates will be replaced with actual survey data when it is received.
- b. survey respondents occasionally supply amended figures for previous periods.
- c. we may also revise the methodology used to raise the survey data to give UK totals.

Publications

This survey is conducted every month and results are typically available five weeks after the collection period. They are published in a statistical release 12 times per year at pre-announced dates and the separate time series spreadsheets are updated monthly too.

Defra statistical releases and details of future publication dates can be viewed on the government website at:

<https://www.gov.uk/government/organisations/department-for-environment-food-rural-affairs/about/statistics>