

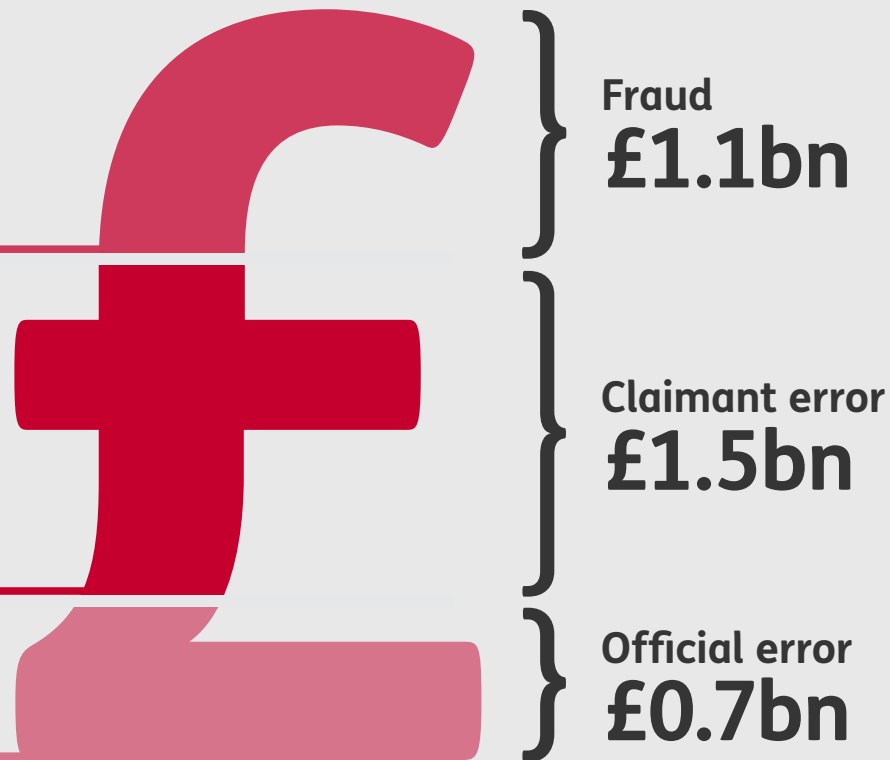
Overpayments in the Benefit System

We split total overpayments into three groups:

Fraud – The claimant knowingly claimed benefits when they were not entitled.

Claimant error – The claimant provided inaccurate or incomplete information.

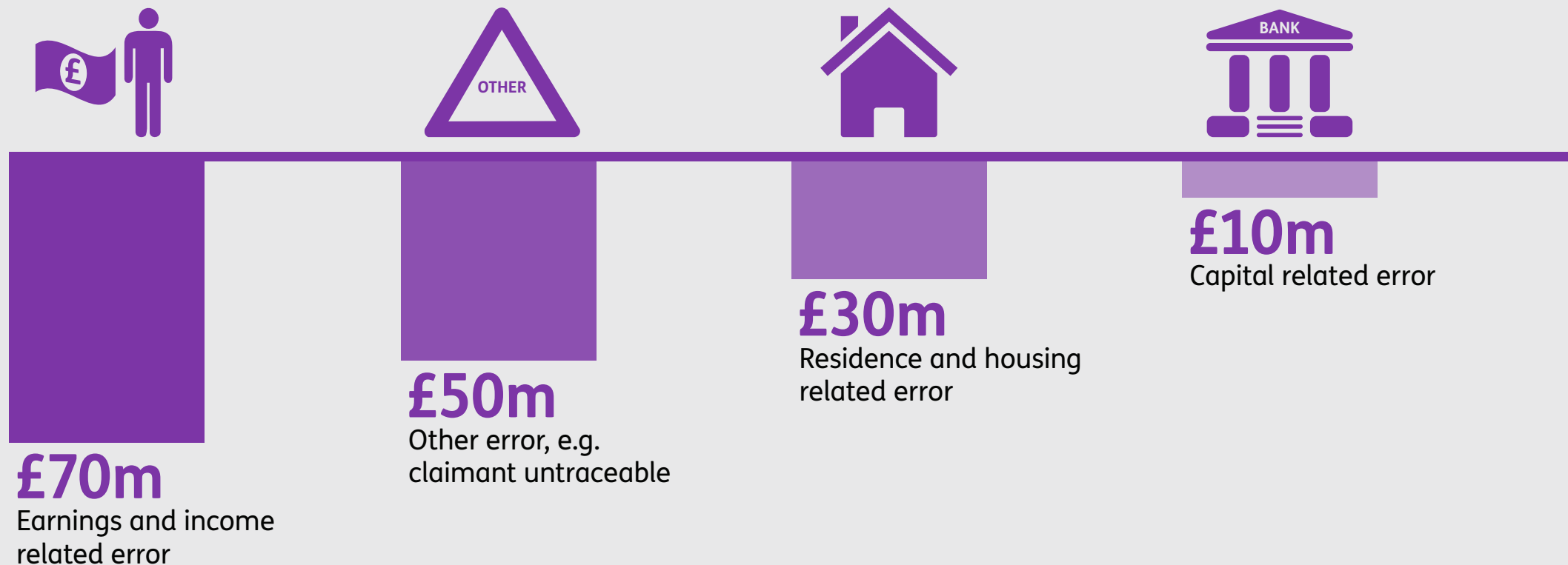
Official error – The benefit was not paid correctly



The top four reasons for fraud in 2013/14 were:



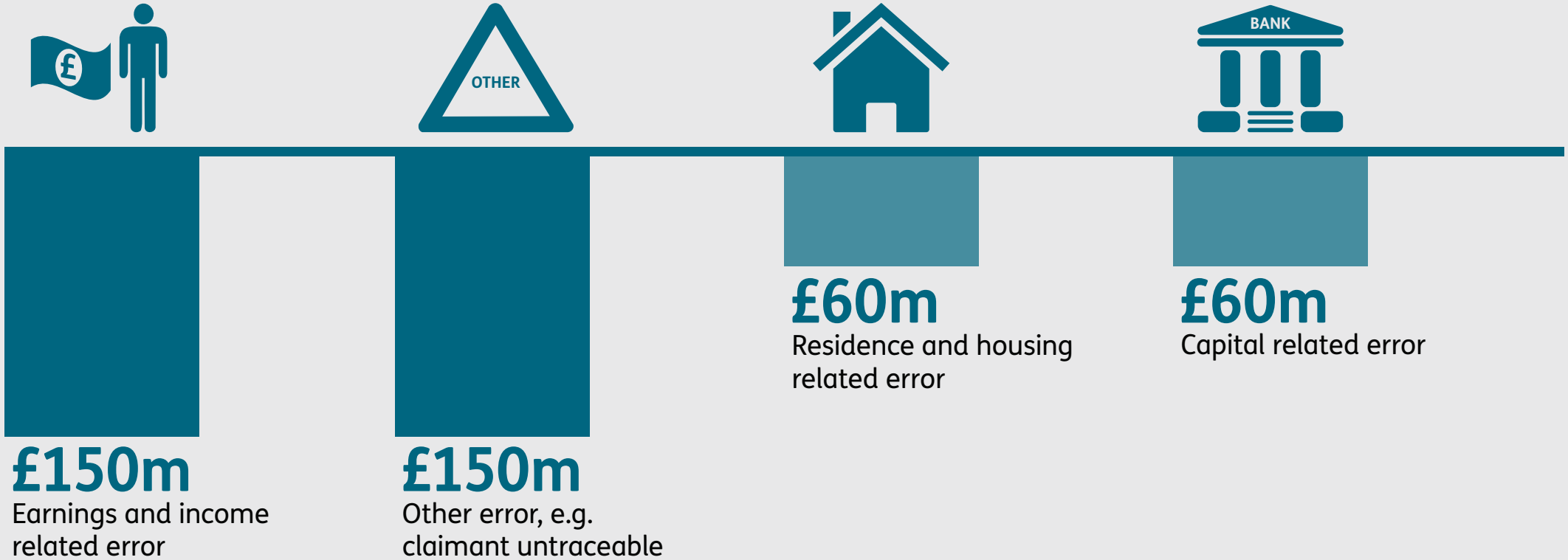
JOBSEEKER'S ALLOWANCE had £160m overpaid in 2013/14:



INCOME SUPPORT had £150m overpaid in 2013/14:



PENSION CREDIT had £410m overpaid in 2013/14:



HOUSING BENEFIT had £1.4bn overpaid in 2013/14:

