

SEMDEC Single European Market DEClaration message

Introduction:

A bespoke message designed by HM Revenue & Customs and based on CUSDEC. Used for the transmission of Intrastat & VAT ESL data.

Notes:

This is Appendix A of the Electronic Data Capture Service (EDCS) Technical Interface Specification. It contains the detailed description of the Single European Market Declaration (SEMDEC) message.

SEMDEC is a UN/EDIFACT message which allows data to be transmitted to the EDCS. It has been designed by HM Revenue & Customs using the United Nations Trade Data Interchange Directory (UNTDID), Issue 91.2. It is based on the CUSDEC Universal Standard Message (UNSM). The order of segments has been changed to allow UK traders or their agents to transmit certain statistical and/or VAT data to the EDCS.

SEMDEC has been specially designed to allow Intra-EC Trade Statistics or VAT - EC Sales Lists or both sets of data combined to be transmitted to the EDCS. The submission of trader nil returns for Intra-EC Trade Statistics would assist in the reconciliation with the VAT figures, and may stop you receiving unnecessary reminder letters, although they are not a legal requirement. Nil returns are not required for VAT EC Sales.

If you need assistance with any of the information in this appendix, please contact:

Tel: 01702 367925 / 367167

fax: 01702 366488

e-mail: ecu@hmrc.gsi.gov.uk

e-mail: wendy.brash@hmrc.gsi.gov.uk

e-mail: gillian.parker@hmrc.gsi.gov.uk

If you need help on the UN/EDIFACT Standard please contact:

Tel: 01702 367891

e-mail: edistandards@hmrc.gsi.gov.uk

Summary of Status:

M This is mandatory within UN/EDIFACT.

C The requirement for this is conditional.

R This is required by HMRC.

NR This is not required by HMRC.

O Optional

Explanation of separator representation as used in the examples:

: Separator between components of a compound element.

+ Separator between elements in a segment.

' Segment terminator.

Format of the elements is specified as:

a upper case alphabetic.

an upper case alphanumeric.

n numeric.

Length of the data item is optionally preceded by ".." if the length is variable.

example 1: a1 is alphabetic 1 character.

example 2: an..7 is alphanumeric variable 7 (i.e. 1 to 7 inclusive) characters.

example 3: n4 is numeric 4 characters.

DETAILS OF CHANGES IMPLEMENTED IN THIS VERSION

1. Notification of change to rules of submission period for VAT EC Sales Lists (w.e.f 1.1.2010).
2. Additional code introduced (Group 1 MOA segment - VIND) for the exchange of sales data for Intra Community supplies of services for VAT EC Sales (w.e.f. 1.1.2010).
3. Examples added for 2. above.
4. Specification assistance contact point change.

Heading Section:

<u>Pos. No.</u>	<u>Seg. ID</u>	<u>Name</u>	<u>Base Guide</u>	<u>User Status</u>	<u>Max.Use</u>	<u>Group Repeat</u>	<u>Notes and Comments</u>
001	UNH	Message Header	M	M	1		
002	BGM	Beginning of Message	M	M	1		
003	DTM	Date/Time/Period	M	M	1		
004	NAD	Name and Address	M	M	1		
004	NAD	Name and Address	C	C	1		

Detail Section:

<u>Pos. No.</u>	<u>Seg. ID</u>	<u>Name</u>	<u>Base Guide</u>	<u>User Status</u>	<u>Max.Use</u>	<u>Group Repeat</u>	<u>Notes and Comments</u>
Segment Group 1: DMS-LOC-NAD-MOA			C	C		9999	
005	DMS	Document/Message Summary	M	M	1		
006	LOC	Place/Location Identification	M	M	1		
007	NAD	Name and Address	M	M	1		
008	MOA	Monetary Amount	M	M	1		

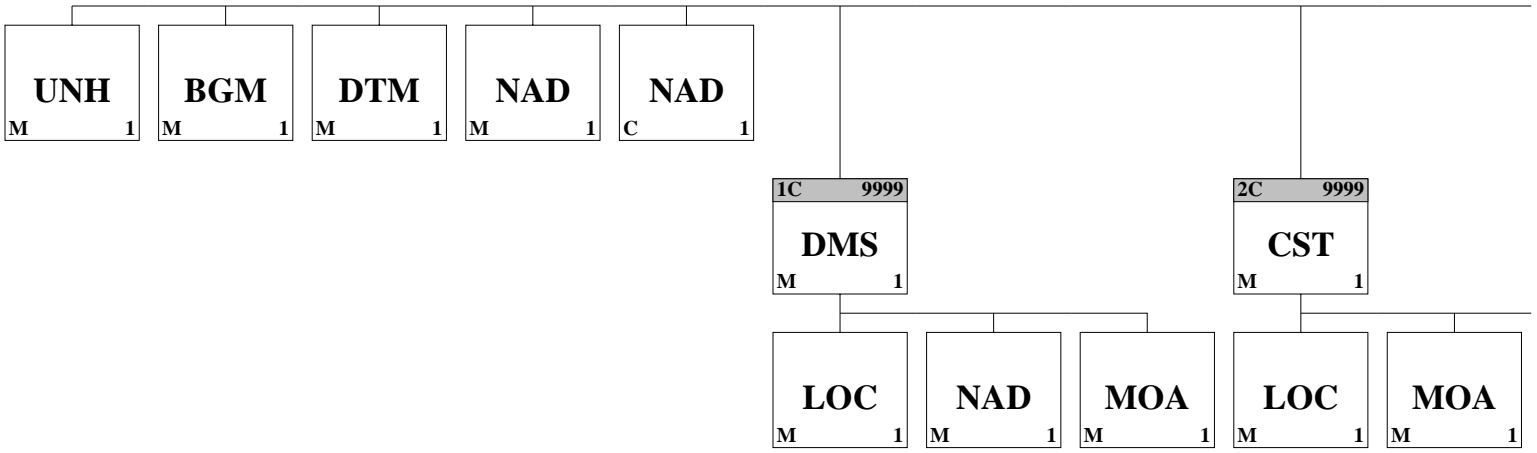
Detail Section:

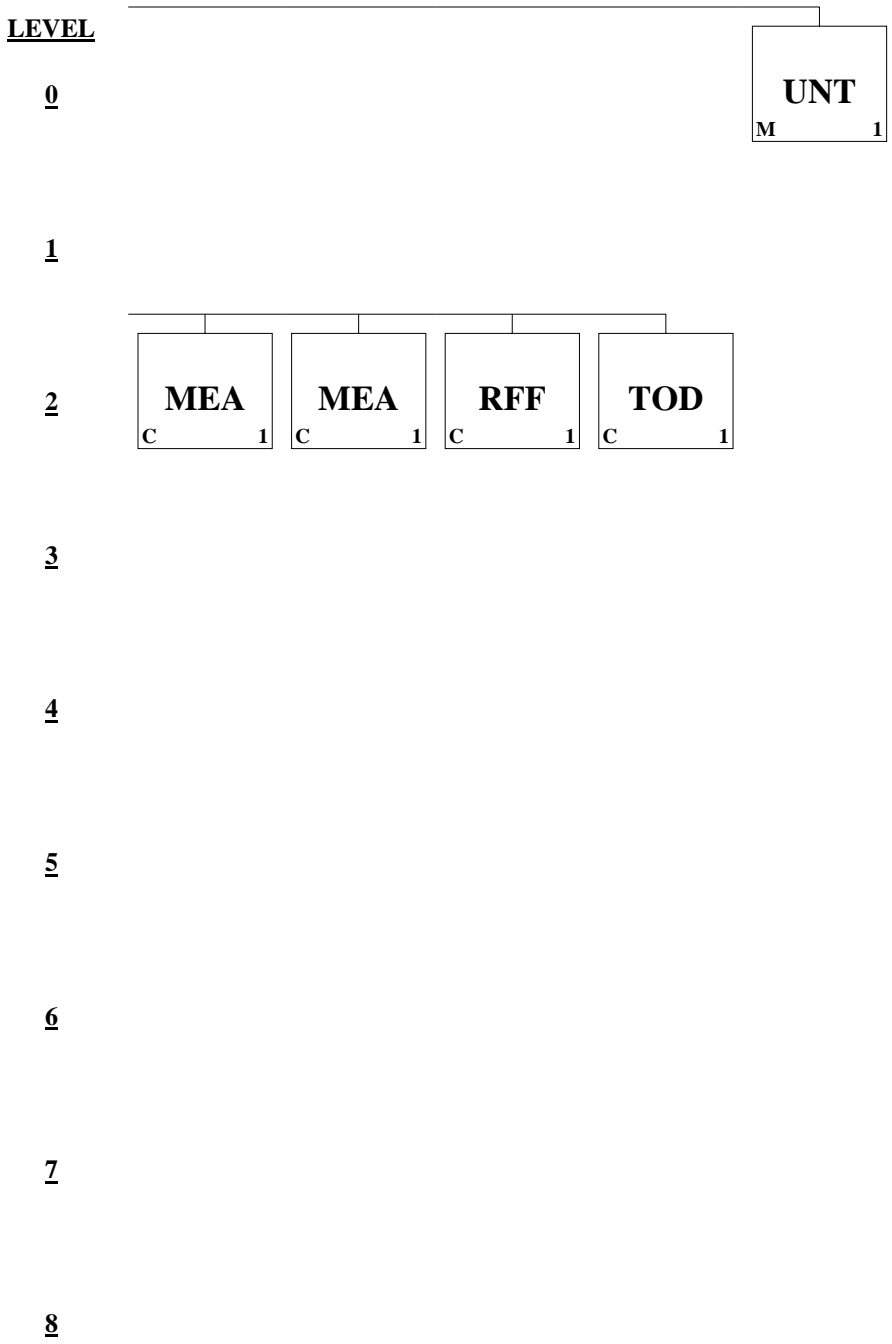
<u>Pos. No.</u>	<u>Seg. ID</u>	<u>Name</u>	<u>Base Guide</u>	<u>User Status</u>	<u>Max.Use</u>	<u>Group Repeat</u>	<u>Notes and Comments</u>
Segment Group 2: CST-LOC-MOA-MEA-RFF-TOD			C	C		9999	
009	CST	Customs Status of Goods	M	M	1		
010	LOC	Place/Location Identification	M	M	1		
011	MOA	Monetary Amount	M	M	1		
012	MEA	Measurements	C	C	1		
012	MEA	Measurements	C	C	1		
013	RFF	Reference	C	O	1		
014	TOD	Terms of Delivery	C	C	1		

Summary Section:

<u>Pos. No.</u>	<u>Seg. ID</u>	<u>Name</u>	<u>Base Guide</u>	<u>User Status</u>	<u>Max.Use</u>	<u>Group Repeat</u>	<u>Notes and Comments</u>
017	UNT	Message Trailer	M	M	1		

LEVEL
0
1
2
3
4
5
6
7
8





Segment: **UNH** Message Header
Position: 001
Group:
Level: 0
Usage: Mandatory
Max Use: 1
Purpose: To head, identify and specify a Message.

Notes: e.g. UNH+SEMDEC10+SEMDEC:1:912:UK:109401'

Data Element Summary

<u>Data Element</u>	<u>Component Element</u>	<u>Name</u>	<u>Base Attributes</u>	<u>User Attributes</u>
0062		MESSAGE REFERENCE NUMBER (MREF)	M an..14	M
A reference provided by the data supplier. It must be unique within a transmission (ie UNB - UNZ loop).				
S009		MESSAGE IDENTIFIER	M	M
	0065	Message type identifier SEMDEC Single European Market UK bespoke message	M an..6	M
	0052	Message type version number 1	M an..3	M
	0054	Message type release number 912	M an..3	M
	0051	Controlling agency UK United Kingdom	M an..2	M
	0057	Association assigned code 109401	C an..6	R

Segment: **BGM** Beginning of Message
Position: 002
Group:
Level: 0
Usage: Mandatory
Max Use: 1
Purpose: To indicate the beginning of a message and to transmit identifying number, type and date of a message.
Notes: This segment is required to report the Date of Transmission (DOTM).
 e.g. BGM+++137:100131:101'

Data Element Summary

<u>Data Element</u>	<u>Component Element</u>	<u>Name</u>	<u>Base Attributes</u>	<u>User Attributes</u>
C002		DOCUMENT/MESSAGE NAME	C	N R
Not Required by HM Revenue & Customs.				
1004		DOCUMENT/MESSAGE NUMBER	C an..35	NR
Not Required by HM Revenue & Customs.				
C507		DATE/TIME/PERIOD	C	R
	2005	Date/time/period qualifier	M an..3	M
		137 Document/message date/time		
	2380	Date/time/period (DOTM)	M an..35	M an6
Date of Transmission (DOTM, n6). Use YYMMDD format.				
	2379	Date/time/period format qualifier	M an..3	M
		101 YYMMDD		

Segment: **DTM** Date/Time/Period
Position: 003
Group:
Level: 0
Usage: Mandatory
Max Use: 1
Purpose: To specify date, and/or time, or period.
Notes: This segment is required to report the Month Covered by the Message (MDEC).

e.g. DTM+156:1001:609'

Data Element Summary

<u>Data Element</u>	<u>Component Element</u>	<u>Name</u>	<u>Base Attributes</u>	<u>User Attributes</u>
C507		DATE/TIME/PERIOD	M	M
	2005	Date/time/period qualifier 156 Accounting period end date	M an..3	M
	2380	Date/time/period (MDEC) Month Covered by the Message (MDEC, n4). Use a format of YYMM. VAT ESL: Use the month covered by the message, or if submitting quarterly, use the last month of the calendar quarter. Please note data sent by EDI is identified by the month rather than the quarter. If submitting monthly then the month should be shown e.g. January 2010 = 1001, October 2010 = 1010. If submitting quarterly, then the last month of the quarter should be used i.e. 1003, 1006, 1009, and 1012. From the 1st January 2010, businesses who make intra-EC supplies of services will be required to submit calendar quarterly ESL declarations (using code E3 {for EDI} to identify services) but may opt to submit calendar monthly if they prefer. From the same date, businesses who make intra-EC supplies of goods will be required to submit monthly ESLs, if their intra-Community goods trade exceeds the thresholds shown below. However, if a business makes supplies of goods below the specified thresholds, they can continue to report ESLs calendar quarterly. During the period 1 January 2010 to 31 December 2011 monthly ESLs will be required: - If the total quarterly value of supplies of intra-EC goods, (excluding VAT), exceeds £70,000 in the current quarter, or any of the previous four quarters. And from 1 January 2012 onwards: - If the total quarterly value of supplies of intra-EC goods, (excluding VAT), exceeds £35,000 in the current quarter, or any of the previous four quarters. If a business supplies both goods and services and they are above the quarterly reporting threshold for goods, they may either: - report only goods in month 1, report only goods in month 2 and report goods in month 3 AND services for the whole quarter, or - report both goods AND services in each month If a business supplies both goods and services and they are below the quarterly reporting threshold for goods, all the supplies may be reported on a quarterly basis. Intrastat: Use the month covered by the message.	M an..35	M an4
	2379	Date/time/period format qualifier 609 YYMM	M an..3	M

Segment:	NAD Name and Address
Position:	004
Group:	
Level:	0
Usage:	Mandatory
Max Use:	1
Purpose:	To specify the name/address and their related function, either by C082 only and/or unstructured by C058 or structured by C080 thru 3207.
Notes:	This segment must occur at least once containing the VAT Registration Number (VATN) of the Declarant (DT). The segment will occur twice if the message is sent by an agent (AE). NB they can be sent in either order. e.g. NAD+DT+123456782'

Data Element Summary

<u>Data Element</u>	<u>Component Element</u>	<u>Name</u>	<u>Base Attributes</u>	<u>User Attributes</u>
3035		PARTY QUALIFIER DT Declarant	M an..3	M
C082	3039	PARTY IDENTIFICATION DETAILS Party id identification (VATN)	C M an..17	R M an..12
The VAT REGISTRATION No. (VATN, n..12) of the declarant, plus a branch identifier (where a branch identifier is applicable). Please note that the 2-digit alpha country code "GB" must not prefix the VAT registration number. NB The VAT Registration number will always be in numeric format.				
C058		NAME AND ADDRESS	C	N R
Not Required by HM Revenue & Customs.				
C080	3036	PARTY NAME Party name	C M an..35	C M
Please provide data supplier's name where possible. This is not mandatory and is required only to assist error correction.				

Segment: **NAD** Name and Address
Position: 004
Group:
Level: 0
Usage: Conditional (Optional)
Max Use: 1
Purpose: To specify the name/address and their related function, either by C082 only and/or unstructured by C058 or structured by C080 thru 3207.
Notes: This is the second occurrence of the NAD segment, which must be used if the message is being sent by an agent (AE). NB they can be sent in either order.
 e.g. NAD+AE+123456782'

Data Element Summary

<u>Data Element</u>	<u>Component Element</u>	<u>Name</u>	<u>Base Attributes</u>	<u>User Attributes</u>
3035		PARTY QUALIFIER AE Declarant's agent/representative	C an..3	R
C082	3039	PARTY IDENTIFICATION DETAILS Party id identification (VATN)	C M an..17	R M an..12
The VAT REGISTRATION No. (VATN, n..12) of the Agent, when circumstances require, plus a branch identifier (where a branch identifier is applicable). Please note that the 2-digit alpha country code "GB" must not prefix the VAT registration number. NB The VAT Registration number will always be in numeric format.				

Group: **DMS** Segment Group 1
Position: 005
Group:
Level: 1
Usage: Conditional (Optional)
Max Use: 9999

Segment Summary

	Pos.	Seg.		Req.	Max.	Group:
	No.	ID	Name	Des.	Use	Repeat
M	005	DMS	Document/Message Summary	M	1	
M	006	LOC	Place/Location Identification	M	1	
M	007	NAD	Name and Address	M	1	
M	008	MOA	Monetary Amount	M	1	

Segment: **DMS** Document/Message Summary
Position: 005 (Trigger Segment)
Group: SG1
Level: 1
Usage: Mandatory
Max Use: 1
Purpose: To specify summary information relating to the document/message.
Notes: This segment is the start of the item detail of the VAT ESL data, and is used when reporting the Line Number of the transaction (LINE).
 e.g. DMS+1'

Data Element Summary

<u>Data Element</u>	<u>Component Element</u>	<u>Name</u>	<u>Base Attributes</u>	<u>User Attributes</u>
1004		DOCUMENT/MESSAGE NUMBER (LINE)	C an..35	R an..4
Line number of the transaction (LINE, n..4). (NB numeric representation).				

Segment: **LOC** Place/Location Identification
Position: 006
Group: SG1
Level: 2
Usage: Mandatory
Max Use: 1
Purpose: To identify a place/location/sub-location and where relevant, the function.
Notes: This segment is used when reporting the Member State of the Customer (CCCD). Only one occurrence of C517 composite should be used.
 e.g. LOC+36:AT'

Data Element Summary

<u>Data Element</u>	<u>Component Element</u>	<u>Name</u>	<u>Base Attributes</u>	<u>User Attributes</u>
C517		LOCATION IDENTIFICATION	M	M
	3227	Place/location qualifier	M an..3	M
		36 Country of ultimate destination		
	3225	Place/location identification (CCCD)	C an..25	R an2
		EC Member state of customer (CCCD, a2).		
		AT Austria		
		BE Belgium		
		BG Bulgaria		
		CY Cyprus [Southern]		
		CZ Czech Republic		
		DE Germany		
		DK Denmark		
		EE Estonia		
		EL Greece		
		ES Spain		
		FI Finland		
		FR France		
		HU Hungary		
		IE Ireland		
		IT Italy		
		LT Lithuania		
		LU Luxembourg		
		LV Latvia		
		MT Malta		
		NL Netherlands		
		PL Poland		
		PT Portugal		
		RO Romania		
		SE Sweden		
		SI Slovenia		
		SK Slovakia		

Segment: **NAD** Name and Address

Position: 007

Group: SG1

Level: 2

Usage: Mandatory

Max Use: 1

Purpose: To specify the name/address and their related function, either by C082 only and/or unstructured by C058 or structured by C080 thru 3207.

Notes: This segment is used when reporting the Customer's VAT Registration Number (CVAT).

e.g. NAD+BY+32132112566'

Data Element Summary

<u>Data Element</u>	<u>Component Element</u>	<u>Name</u>	<u>Base Attributes</u>	<u>User Attributes</u>
3035		PARTY QUALIFIER	M an..3	M
		BY Buyer		
C082		PARTY IDENTIFICATION DETAILS	C	R
	3039	Party id identification (CVAT)	M an..17	M an..15

Customer's VAT registration number (CVAT, an..15): for each customer supplied in the period. Punctuation such as spaces, dashes and full stops can be ignored for transmission purposes. Do not repeat the 2-digit country code identifier (CCCD) with the VAT registration number.

Segment: **MOA** Monetary Amount**Position:** 008**Group:** SG1**Level:** 2**Usage:** Mandatory**Max Use:** 1**Purpose:** To specify a monetary amount.**Notes:** This segment is used when reporting the Total Value of Sales and/or Services (TVOG), including an indicator (VIND) for goods/services type. Only one occurrence of C516 composite should be used.

e.g. MOA+5+E3:12500'

Data Element Summary

<u>Data Element</u>	<u>Component Element</u>	<u>Name</u>	<u>Base Attributes</u>	<u>User Attributes</u>
5007		MONETARY FUNCTION, CODED 5 Amount for Customs purposes	M an..3	M
C516		MONETARY AMOUNT	C	R
	5025	Monetary amount type qualifier (VIND) Indicator (VIND, an2).	M an..3	M an2
		E0 Other than triangular trade. (When the Total Value of Supplies (TVOG) relates to direct sales of goods)		
		E2 Triangular Trade. (When the Total value of Sales/Supplies (TVOG) relates to goods sent by the intermediary in a triangular transaction)		
		E3 Services (when the Total Value of Sales/Supplies (TVOG) relates to the supply of services)		
	5004	Monetary amount (TVOG)	C n..18	R n..14
		Total value of sales/supplies (TVOG, n..14); to that customer in the period, to the nearest pound sterling below. NB When reporting as the intermediary in intra-EC triangular transactions and/or for the supplies of services, the values should be shown on separate lines for each customer using the appropriate indicator as shown above.		
		Prefix with a '-' (minus) sign immediately before the amount for negative values.		

Group: **CST** Segment Group 2
Position: 009
Group:
Level: 1
Usage: Conditional (Optional)
Max Use: 9999

Segment Summary

	Pos.	Seg.		Req.	Max.	Group:
	No.	ID	Name	Des.	Use	Repeat
M	009	CST	Customs Status of Goods	M	1	
M	010	LOC	Place/Location Identification	M	1	
M	011	MOA	Monetary Amount	M	1	
C	012	MEA	Measurements	C	1	
C	012	MEA	Measurements	C	1	
O	013	RFF	Reference	C	1	
C	014	TOD	Terms of Delivery	C	1	

Segment:	CST Customs Status of Goods
Position:	009 (Trigger Segment)
Group:	SG2
Level:	1
Usage:	Mandatory
Max Use:	1
Purpose:	To specify goods in terms of customs identities, status and intended use.
Notes:	This segment is the start of the item detail of the Intrastat data. It is used when reporting the Commodity Code of the Goods (CMCD), the Flow (FLOW), and the Nature of Transaction (NOTR). The first 3 occurrences of C246 must be used, but the Statistical Procedure (SPRO), which is not required by HMRC, can be mapped to the fourth occurrence. (NB these can be sent in any order)
	e.g. CST++95066290:122+A:105+10:112+NNN'

Data Element Summary

<u>Data Element</u>	<u>Component Element</u>	<u>Name</u>	<u>Base Attributes</u>	<u>User Attributes</u>
1496		GOODS ITEM NUMBER	C n..5	NR
		Not Required by HM Revenue & Customs.		
C246		CUSTOMS IDENTITY CODES	C	R
	7361	Customs code identification (CMCD)	M an..18	M an8
		Commodity code of goods (CMCD, n8). See Intrastat Classification Nomenclature. (NB Numeric representation).		
	1131	Code list qualifier	C an..3	R
		122 Commodity		
C246		CUSTOMS IDENTITY CODES	C	R
	7361	Customs code identification (FLOW)	M an..18	M an1
		Flow (FLOW, a1).		
		A Arrival		
		D Dispatch		
	1131	Code list qualifier	C an..3	R
		105 Customs declaration type		
C246		CUSTOMS IDENTITY CODES	C	R
	7361	Customs code identification (NOTR)	M an..18	M an2
		Nature of transaction (NOTR, n2). (NB numeric representation)		
		1st digit: Codes are shown below. X represents the 2nd digit, and is shown for guidance only.		
		2nd digit: Codes are shown below. Y represents the 1st digit, and is shown for guidance only.		
		1X	All transactions involving actual or intended change of ownership for a consideration (except those appropriate to 2X, 7X, 8X)	
		2X	Returned goods and replacement goods	
		3X	Free of charge transactions involving permanent change of ownership	
		4X	Goods for processing (other than 7X)	
		5X	Goods returned following process (other than 7X)	
		6X	No longer used in the UK	
		7X	Joint defence projects or other joint inter-governmental production programme	
		8X	Supply of building materials and equipment as part of a general construction or engineering contract	
		9X	Other transactions	
		Y0	In all cases where 6, 7, 8 or 9 below do not apply.	
		Y6	6 = Credit notes	
		Y7	Transactions included on supplementary declarations but not shown in boxes 8 or 9 of the VAT returns for the equivalent period	
		Y8	Transactions included in boxes 8 or 9 of the VAT return but not required on supplementary declarations	
		Y9	This code is to be used only in conjunction with the first digit *9* for Nil Returns. NB This is not part of the regulation, but must be submitted for EDCS processing	

	1131	Code list qualifier	C	an..3	R
		112		Customs nature of the transaction	
C246		CUSTOMS IDENTITY CODES	C		N
					R
	7361	Customs code identification (SPRO)	M	an..18	M
		Statistical procedure (SPRO, an..18). Not required by HM Revenue & Customs.			

Segment: **LOC** Place/Location Identification
Position: 010
Group: SG2
Level: 2
Usage: Mandatory
Max Use: 1
Purpose: To identify a place/location/sub-location and where relevant, the function.
Notes: This segment is used for Arrivals to report the Member State from which the consignment arrived (CDSP), and alternatively for Dispatches to report the Member State to which the consignment was dispatched (DSTC). Composite C517 must occur once, for either an Arrival (CDSP) or a Dispatch (DSTC). Additional composite(s) C517 can also be used when sending items not required by HM Revenue & Customs (RDES or RORG, POAR or PODS, and PTNS). The composites can be sent in any order.
 e.g. LOC+35:BE'

Data Element Summary

Data Element	Component Element	Name	Base Attributes	User Attributes
C517		LOCATION IDENTIFICATION	M	M
	3227	Place/location qualifier	M an..3	M
		Use a value of "35" when reporting the Member State from which the consignment arrived (CDSP). or Use a value of "36" when reporting the Member State to which the consignment was dispatched (DSTC).		
		35	Country of exportation/despatch	
		36	Country of ultimate destination	
	3225	Place/location identification (CDSP/DSTC)	C an..25	R an2
		(CDSP, a2) - Member State from which consignment arrived. (DSTC, a2) - Member State to which consignment was dispatched.		
		AT	Austria	
		BE	Belgium	
		BG	Bulgaria	
		CY	Cyprus	
		CZ	Czech Republic	
		DE	Germany	
		DK	Denmark	
		EE	Estonia	
		ES	Spain	
		FI	Finland	
		FR	France	
		GB	United Kingdom	
		GR	Greece	
		HU	Hungary	
		IE	Ireland	
		IT	Italy	
		LT	Lithuania	
		LU	Luxembourg	
		LV	Latvia	
		MT	Malta	
		NL	Netherlands	
		PL	Poland	
		PT	Portugal	
		RO	Romania	
		SE	Sweden	
		SI	Slovenia	

SK

Slovakia

C517

LOCATION IDENTIFICATION

C

N

3227

Place/location qualifier

C an..3

R

9

Place/port of loading

11

Place/port of discharge

13

Place of transshipment

47

Region of destination

106

Region of origin

3225

Place/location identification

C an..25

R

POAR - (11) Port of arrival. Not required by HM Revenue & Customs.

PODS - (9) Port of dispatch. Not required by HM Revenue & Customs.

PTNS - (13) Port of transshipment. Not required by HM Revenue & Customs.

RDES - (47) Region of destination. Not required by HM Revenue & Customs.

RORG - (106) Region of origin. Not required by HM Revenue & Customs.

Segment: **MOA** Monetary Amount**Position:** 011**Group:** SG2**Level:** 2**Usage:** Mandatory**Max Use:** 1**Purpose:** To specify a monetary amount.**Notes:**

This segment is used to report the Value of the Goods (VALU). The first occurrence of Composite C516 is to be used.

e.g. MOA+5+123:100000'

Data Element Summary

<u>Data Element</u>	<u>Component Element</u>	<u>Name</u>	<u>Base Attributes</u>	<u>User Attributes</u>
5007		MONETARY FUNCTION, CODED 5 Amount for Customs purposes	M an..3	M
C516		MONETARY AMOUNT	C	R
	5025	Monetary amount type qualifier 123 Statistical value	M an..3	M
	5004	Monetary amount (VALU)	C n..18	R n..14
<p>Value of the goods (VALU, n..14). Negative values (ie use of the '-' [minus] sign) are not allowed for Intrastat (e.g. credit notes: see Nature of Transaction codes (NOTR)). Round to the nearest whole pound except where the value is less than 50p, when you should show one pound sterling as the declared value. (Do not show commas, full stops or decimals). The value is not to be declared in Euro.</p>				

Segment: **MEA** Measurements**Position:** 012**Group:** SG2**Level:** 2**Usage:** Conditional (Optional)**Max Use:** 1**Purpose:** To specify physical measurements, including dimension tolerances, weights and counts.**Notes:** The MEA segment is used when reporting the first Tariff Quantity (NTWT as specified here), and for the Supplementary Unit (SPQY). It can occur twice and in any order. The Tariff specifies when the net mass and second quantities are required.

e.g. MEA+AAR++G13:1200'

Data Element Summary

<u>Data Element</u>	<u>Component Element</u>	<u>Name</u>	<u>Base Attributes</u>	<u>User Attributes</u>
6311		MEASUREMENT APPLICATION QUALIFIER AAR 1st specified tariff quantity	M an..3	M
C502		MEASUREMENT DETAILS	C	N R
Not Required by HM Revenue & Customs.				
C174		VALUE/RANGE	C	R
	6411	Measure unit qualifier G13 To be used when specifying the first Tariff quantity (NTWT).	M an..3	M
	6314	Measurement value (NTWT)	C n..18	R n..11
(NTWT, n..11) - First quantity: (net mass in kilos) where a net mass is required by the Intrastat Classification Nomenclature - round to whole kilogram above.				

Segment: **MEA** Measurements
Position: 012
Group: SG2
Level: 2
Usage: Conditional (Optional)
Max Use: 1
Purpose: To specify physical measurements, including dimension tolerances, weights and counts.
Notes: This is the second occurrence of the MEA segment, which must be used if a Supplementary Unit (SPQY) is required. (NB MEA segments can be sent in any order).
 e.g. MEA+AAS++G14:642750'

Data Element Summary

<u>Data Element</u>	<u>Component Element</u>	<u>Name</u>	<u>Base Attributes</u>	<u>User Attributes</u>
6311		MEASUREMENT APPLICATION QUALIFIER AAS 2nd specified tariff quantity	M an..3	M
C502		MEASUREMENT DETAILS	C	N R
Not Required by HM Revenue & Customs.				
C174		VALUE/RANGE	C	R
	6411	Measure unit qualifier G14 To be used when specifying the second Tariff quantity (SPQY).	M an..3	M
	6314	Measurement value (SPQY)	C n..18	R n..11
(SPQY, n..11) - Supplementary units: where a second quantity is required by the Intrastat Classification Nomenclature.				

Segment: **RFF** Reference

Position: 013

Group: SG2

Level: 2

Usage: Conditional (Advised)

Max Use: 1

Purpose: To specify the identifying number associated with a party or transaction.

Notes: This segment is used when reporting the Declarant's reference number (DREF), e.g. invoice number. It's use is optional, but its inclusion will help with any query action.

e.g. RFF+ABE:CND0001'

Data Element Summary

<u>Data Element</u>	<u>Component Element</u>	<u>Name</u>	<u>Base Attributes</u>	<u>User Attributes</u>
C506		REFERENCE	M	M
	1153	Reference qualifier ABE Declarant's reference number	M an..3	M
	1154	Reference number (DREF) Declarant's reference number (DREF, an..14).	C an..35	R an..14

Segment: **TOD** Terms of Delivery**Position:** 014**Group:** SG2**Level:** 2**Usage:** Conditional (Optional)**Max Use:** 1**Purpose:** To specify terms of delivery.**Notes:** This segment must be supplied to report the Terms of Delivery (TODI) for declarants identified as being above the specified threshold(s) for arrivals and despatches.

e.g. TOD+++CIF'

Data Element Summary

<u>Data Element</u>	<u>Component Element</u>	<u>Name</u>	<u>Base Attributes</u>	<u>User Attributes</u>
4055		TERMS OF DELIVERY FUNCTION, CODED	C an..3	NR
Not Required by HM Revenue & Customs.				
4215		TRANSPORT CHARGES METHOD OF PAYMENT, CODED	C an..3	NR
Not Required by HM Revenue & Customs.				
C100		TERMS OF DELIVERY	C	R
	4053	Terms of delivery, coded (TODI)	C an..3	R an3
Terms of Delivery (TODI, a3).				
		CFR	Cost and freight (C & F).	
		CIF	Cost Insurance Freight.	
		CIP	Carriage and insurance paid to.	
		CPT	Carriage paid to.	
		DAF	Delivered at frontier.	
		DDP	Delivered Duty Paid.	
		DDU	Delivered Duty Unpaid.	
		DEQ	Delivered ex-quay.	
		DES	Delivered ex-ship.	
		EXW	Ex Works.	
		FAS	Free alongside ship.	
		FCA	Free carrier.	
		FOB	Free on Board.	
		XXX	Other delivery terms.	

Segment: **UNT** Message Trailer
Position: 017
Group:
Level: 0
Usage: Mandatory
Max Use: 1
Purpose: To end and check the completeness of a message.
Notes: e.g. UNT+27+SEMDEC10'

Data Element Summary

<u>Data Element</u>	<u>Component Element</u>	<u>Name</u>	<u>Base Attributes</u>	<u>User Attributes</u>
0074		NUMBER OF SEGMENTS IN A MESSAGE (NSEG)	M n..6	M
0062		MESSAGE REFERENCE NUMBER (MREF) As per the UNH (0062).	M an..14	M

Example No. 1 VAT ESL & Intrastat combined message - wrapped as transmitted:

```
UNB+UNOA:2+DANGERPILEYPPLC+OTHER+100131:0851+10++LIVDEC'UNH+SEMDEC10+SEMDEC:1:912:UK:109401'BGM+++137:100131:101'DTM+156:1001:609'NAD+AE+123456782'NAD+DT+123456782'DMS+1'LOC+36:AT'NAD+BY+66521123123'MOA+5+E0:12500'DMS+2'LOC+36:DE'NAD+BY+32132112566'MOA+5+E2:50'DMS+3'LOC+36:DE'NAD+BY+32132112566'MOA+5+E3:2250'CST++95066290:122+A:105+10:112+NNN'LOC+35:DK'MOA+5+123:100000'MEA+AAR++G13:1200'MEA+AAS++G14:642750'RFF+ABE:CND0001'TOD+++CIF'CST++94055100:122+D:105+10:112'LOC+36:GR'MOA+5+123:50'MEA+AAR++G13:1200'RFF+ABE:CND0099'TOD+++DDP'UNT+31+SEMDEC10'UNZ+1+10'
```

Example No. 1 VAT ESL & Intrastat combined message - expanded to individual segments:

```
UNB+UNOA:2+DANGERPILEYPPLC+OTHER+100131:0851+10++LIVDEC'
UNH+SEMDEC10+SEMDEC:1:912:UK:109401'
BGM+++137:100131:101'
DTM+156:1001:609'
NAD+AE+123456782'
NAD+DT+123456782'
DMS+1'
LOC+36:AT'
NAD+BY+66521123123'
MOA+5+E0:12500'
DMS+2'
LOC+36:DE'
NAD+BY+32132112566'
MOA+5+E2:50'
DMS+3'
LOC+36:DE'
NAD+BY+32132112566'
MOA+5+E3:2250'
CST++95066290:122+A:105+10:112+NNN'
LOC+35:DK'
MOA+5+123:100000'
MEA+AAR++G13:1200'
MEA+AAS++G14:642750'
RFF+ABE:CND0001'
TOD+++CIF'
CST++94055100:122+D:105+10:112'
LOC+36:GR'
MOA+5+123:50'
MEA+AAR++G13:1200'
RFF+ABE:CND0099'
TOD+++DDP'
UNT+31+SEMDEC10'
UNZ+1+10'
```

Example No. 2 Intrastat only message - wrapped as transmitted:

```
UNB+UNOA:2+DANGERPILEYPPLC+OTHER+050731:0918+11++LIVDEC'UNH+SEMDEC11+SEMDEC:1:912:UK:109401'BGM+++137:050731:101'DTM+156:0507:609'NAD+AE+123456782'NAD+DT+123456782'CST++33042900:122+A:105+10:112+NNN'LOC+35:FR'MOA+5+123:100000'MEA+AAR++G13:1200'RFF+ABE:CND0001'TOD+++CIF'CST++95066290:122+D:105+10:112'LOC+36:IT'MOA+5+123:50'
```

0'MEA+AAR++G13:1200'MEA+AAS++G14:642750'RFF+ABE:CND0099'TOD+++DDP'UNT+19+SEMDEC11'UNZ+1+11'

Example No. 2 Intrastat only message - expanded to individual segments:

UNB+UNOA:2+DANGERPILEYPPLC+OTHER+050731:0918+11++LIVDEC'
 UNH+SEMDEC11+SEMDEC:1:912:UK:109401'
 BGM+++137:050731:101'
 DTM+156:0507:609'
 NAD+AE+123456782'
 NAD+DT+123456782'
 CST++33042900:122+A:105+10:112+NNN'
 LOC+35:FR'
 MOA+5+123:100000'
 MEA+AAR++G13:1200'
 RFF+ABE:CND0001'
 TOD+++CIF'
 CST++95066290:122+D:105+10:112'
 LOC+36:IT'
 MOA+5+123:50'
 MEA+AAR++G13:1200'
 MEA+AAS++G14:642750'
 RFF+ABE:CND0099'
 TOD+++DDP'
 UNT+19+SEMDEC11'
 UNZ+1+11'

Example No. 3 Intrastat Nil Return - wrapped as transmitted:

NB All mandatory elements must be included to the correct size and format.

Variables (as shown in the example) format:

YYMMDD = Date of transmission.

YYMM = Month covered by the message.

VATNVATNV = Vat Reg. No. of the Declarant.

UNB+UNOA:2+DANGERPILEYPPLC+OTHER+050731:0817+12++LIVDEC'UNH+SEMDEC12+SEMDEC
 C:1:912:UK:109401'BGM+++137:YYMMDD:101'DTM+156:YYMM:609'NAD+DT+VATNVATNV'CST+++0
 0000000:122+A:105+99:112'LOC+35: 'MOA+5+123:0'TOD+++ 'UNT+9+SEMDEC12'UNZ+1+12'

Example No. 3 Intrastat Nil Return - expanded to individual segments:

UNB+UNOA:2+DANGERPILEYPPLC+OTHER+050731:0817+12++LIVDEC'
 UNH+SEMDEC12+SEMDEC:1:912:UK:109401'
 BGM+++137:YYMMDD:101'
 DTM+156:YYMM:609'
 NAD+DT+VATNVATNV'
 CST+++00000000:122+A:105+99:112' (For Arrival. Use D instead of A for Dispatch).
 LOC+35: ' (For Arrival. Use 36 instead of 35 for Dispatch).
 MOA+5+123:0'
 TOD+++ ' (only traders identified as being above the specified threshold)
 UNT+9+SEMDEC12'
 UNZ+1+12'

Example No. 4 VAT ESL only message - wrapped as transmitted:

UNB+UNOA:2+DANGERPILEYPPLC+OTHER+100131:0817+13++LIVDEC'UNH+SEMDEC13+SEMDEC
 C:1:912:UK:109401'BGM+++137:100131:101'DTM+156:1001:609'NAD+AE+987654321'NAD+DT+123
 456782'DMS+1'LOC+36:AT'NAD+BY+24315681245'MOA+5+E0:12500'DMS+2'LOC+36:DE'NAD+BY+
 32132112566'MOA+5+E2:50'DMS+3'LOC+36:DE'NAD+BY+32132112566'MOA+5+E3:2250'UNT+18+
 SEMDEC13'UNZ+1+13'

Example No. 4 VAT ESL only message - expanded to individual segments:

UNB+UNOA:2+DANGERPILEYPPLC+OTHER+100131:0817+13++LIVDEC'
 UNH+SEMDEC13+SEMDEC:1:912:UK:109401'
 BGM+++137:100131:101'
 DTM+156:1001:609'
 NAD+AE+987654321'
 NAD+DT+123456782'
 DMS+1'
 LOC+36:AT'
 NAD+BY+24315681245'
 MOA+5+E0:12500'
 DMS+2'
 LOC+36:DE'

SEMDEC Technical Interface Specification Appendix A

NAD+BY+32132112566'

MOA+5+E2:50'

DMS+3'

LOC+36:DE'

NAD+BY+32132112566'

MOA+5+E3:2250'

UNT+18+SEMDEC13'

UNZ+1+13'