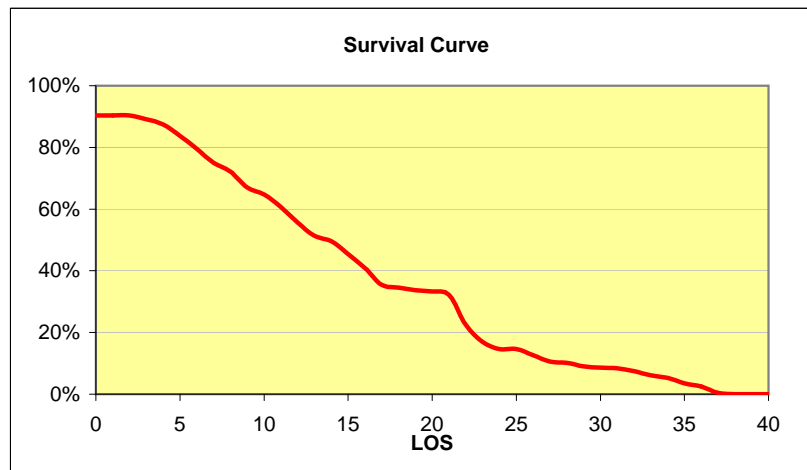


Career Projection for a New Entrant into the RAF Physical Training Instructor trade.

LoS ¹	% chance of reaching LoS
0	90%
1	90%
2	90%
3	89%
4	87%
5	84%
6	80%
7	75%
8	72%
9	67%
10	65%
11	61%
12	56%
13	51%
14	50%
15	45%
16	41%
17	35%
18	35%
19	34%
20	33%
21	32%
22	23%
23	17%
24	15%
25	15%
26	13%
27	11%
28	10%
29	9%
30	9%
31	8%
32	7%
33	6%
34	5%
35	3%
36	3%
37	0%
38	0%
39	0%
40	0%

	% chance of being promoted to subsequent ranks	% chance of promotion having already achieved the preceding rank	Average <i>total</i> length of service on promotion
SAC	90%	90%	0 years & 1 month
CPL	90%	97%	0 years & 11 months
SGT	49%	56%	9 years & 5 months
FS	22%	53%	19 years & 5 months
WO	8%	37%	25 years & 3 months

Average Return of Service² 19 years 0 months



¹ 'LOS x' means 'LOS greater than or equal to x but less than x+1'. So 'LOS21', for example, is the chance of personnel serving more than or equal to 21 years but less than 22 years.

² Average Return of Service is the average length of service on exit. It considers the trade as a whole and is not specific to rank or LoS.

Notes:

- a. These data are based on the seven year span of actual data 2006/07 – 2012/13. By considering a cohort of individuals with the similar characteristics - **New Entrants** into the **RAF PTI** trade - average career projections have been calculated.
- b. Defence Statistics' career forecasts are not based on the actual experience of any one individual, but rather are based on the historical behaviour of individuals with similar characteristics.