

Approach earthworks to be removed to adjoining ground level

New highway (under construction)

Huntingdon town centre

Existing local road lighting retained

Bampton road

Huntingdon Rig Road

Signalised junction for station forecourt access for buses, taxi's and drop-off only, with pedestrian crossings

Millfield House

Millfield Court

Pedestrian ramp

Registered Common and scheduled monument

External embankment slopes retained where possible

Signalised station car park access junction

Bus Station

Signalised junction with pedestrian crossings

Station car park

Huntingdon railway station

Maintenance lay-by for traffic signals

Station car park

Drainage attenuation tank

Mill Common

Mill Common

PATHFINDER LINK

Car park

Existing underpass retained

Detrunked A14 dual carriageway retained

Proposed new drainage outfall

Potential replacement special category land

Gas distribution station

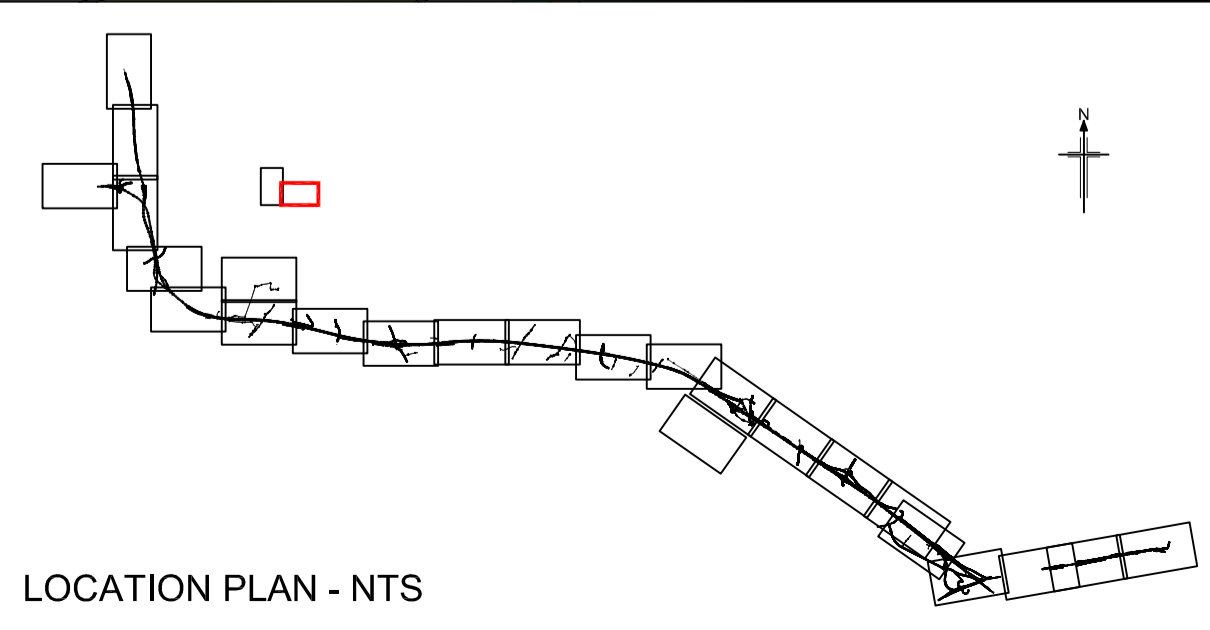
Proposed new drainage outfall location

Registered Common

Alconbury Brook

River Great Ouse

NOTES
1. All works are within the Huntingdon Conservation Area.



Project
A14 CAMBRIDGE TO HUNTINGDON IMPROVEMENT SCHEME

Drawing title
PROPOSED SCHEME GENERAL ARRANGEMENT SHEET 26 OF 26