



19 December 2013

## United Kingdom Slaughter Statistics – November 2013

### Contents

Section 1	Monthly numbers of home killed livestock slaughtered	page 2
Section 2	Average dressed carcase weights	page 2
Section 3	Monthly volumes of home killed meat production	page 3
Section 4	Average weekly numbers of livestock slaughtered	page 3 to page 4
Section 5	Monthly numbers of livestock slaughtered by country	page 5
Section 6	Methodology, notes and revisions policy	page 6

### Key points

This release shows the latest monthly information on the slaughtering of cattle, sheep and pigs. It also includes dressed carcase weight and meat production information. The key results for **November 2013** are given below:

- **Cattle:** UK prime cattle (steers, heifers and young bulls) slaughterings were 1.6 per cent lower than in November 2012 at 158 thousand head. Beef and veal production was 71 thousand tonnes, 4.8 per cent lower than in November 2012.
- **Sheep:** UK clean sheep slaughterings were 1.0 per cent higher than in November 2012 at 1083 thousand head. Mutton and lamb production was 25 thousand tonnes, 5.1 per cent higher than in November 2012.
- **Pigs:** UK clean pig slaughterings were 0.6 per cent lower than in November 2012 at 826 thousand head. Pigmeat production was 69 thousand tonnes, 0.8 per cent higher than in November 2012.

This notice will be updated at 09:30 on 16 January 2014. Additional time series which include weekly slaughter averages, production and trade data can be found at <https://www.gov.uk/government/publications/cattle-sheep-and-pig-slaughter>

---

**Enquiries on this publication to:** Sarah Thompson, Department for Environment, Food and Rural Affairs, Room 201, Foss House, Kings Pool, 1 - 2 Peasholme Green, York YO1 7PX.  
Tel: ++ 44 (0)1904 455097, email:sarah.thompson@defra.gsi.gov.uk

**A National Statistics publication.** National Statistics are produced to high professional standards. They undergo regular quality assurance reviews to ensure that they meet customer needs. They are produced free from any political interference. For general enquiries about National Statistics, contact the National Statistics Public Enquiry Service: tel. 0845 601 3034 email [info@statistics.gov.uk](mailto:info@statistics.gov.uk). You can also find National Statistics on the internet at <http://www.statistics.gov.uk/>.

## Section 1: Monthly numbers of home killed livestock slaughtered

Table 1 shows monthly estimates of the number of home killed cattle, sheep and pigs, slaughtered as meat for human consumption in UK abattoirs. The survey is run according to statistical, rather than calendar months, the number of weeks in the statistical month is specified below.

**Table 1: United Kingdom monthly numbers of livestock slaughtered** thousand head

	September 2013 4 weeks	October 2013 5 weeks	November 2013 4 weeks
Steers	72	96	74
Heifers	54	74	62
Young Bulls	24	27	23
Cows and Adult Bulls	50	68	58
Calves	9	11	8
Other Sheep and Lambs	1108	1506	1083
Ewes and Rams	166	237	168
Clean Pigs	793	1012	826
Sows and Boars	20	24	19

## Section 2: Average dressed carcass weights

Table 2 shows the monthly average dressed carcass weight of livestock slaughtered for meat for human consumption in the United Kingdom.

**Table 2: United Kingdom average dressed carcass weights** kilogramme

	September 2013	October 2013	November 2013
Steers	356.0	355.1	356.3
Heifers	313.2	314.5	316.1
Young Bulls	341.1	336.7	336.5
Cows and Adult Bulls	306.3	304.7	305.0
Calves	41.8	46.1	51.0
Other Sheep and Lambs	18.8	19.0	19.1
Ewes and Rams	25.7	25.3	25.9
Clean Pigs	79.6	80.3	80.2
Sows and Boars	142.9	153.2	144.4

### Section 3: Monthly volumes of home killed meat production

Table 3 shows the monthly volumes of meat produced in UK abattoirs. Data is shown according to statistical, rather than calendar months, number of weeks in statistical month as specified.

**Table 3: United Kingdom monthly volumes of meat production** thousand tonnes

	September 2013 4 weeks	October 2013 5 weeks	November 2013 4 weeks
Beef	67	88	71
Mutton and Lamb	25	35	25
Pigmeat	66	85	69

### Section 4: Average weekly numbers of home killed livestock slaughtered

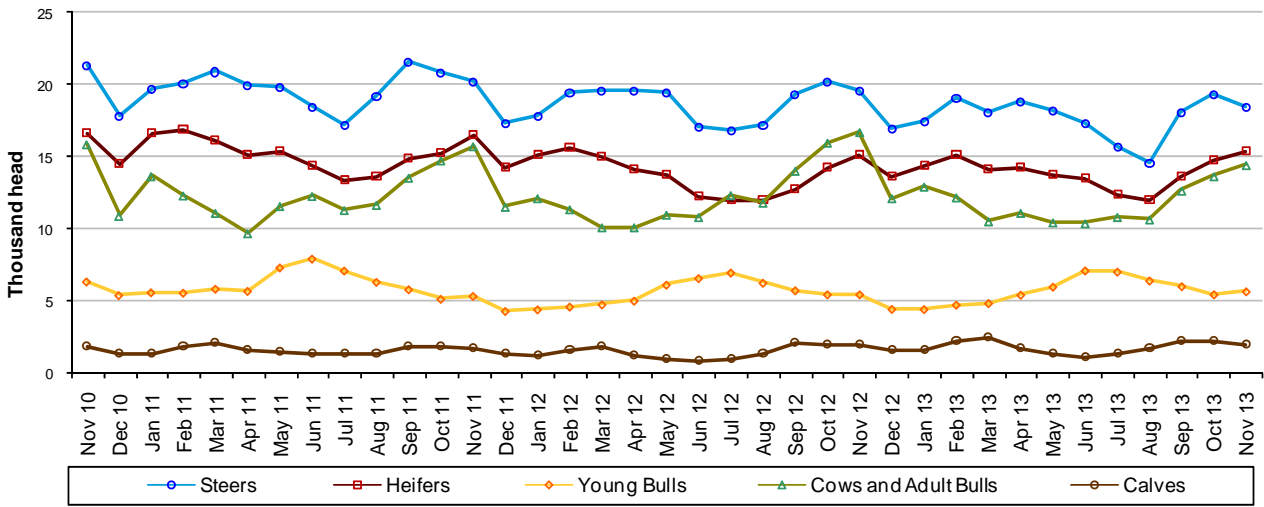
Table 4 shows the average weekly slaughter figures for the last thirteen months. The monthly slaughter figures in section one are affected by the number of weeks in the statistical month. To get a clearer measure of trends weekly averages are calculated by dividing the number of livestock slaughtered each month by the number of weeks in the statistical month.

Longer term trends can be seen in Figures 4:1, 4:2 and 4:3, following this table.

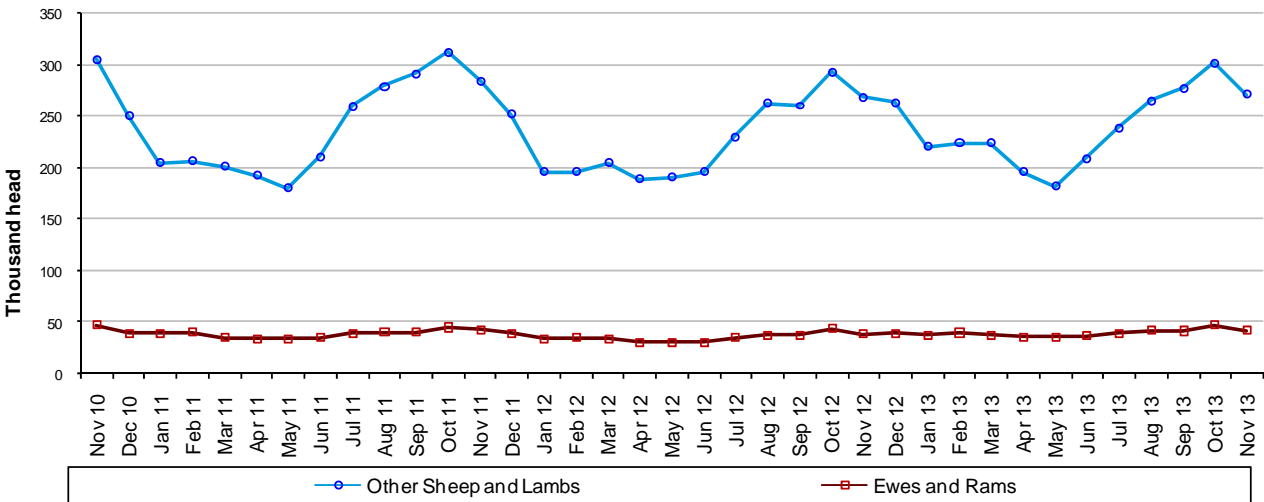
**Table 4: United Kingdom average weekly numbers of livestock slaughtered** thousand head

	2013												
	Nov	Dec	Jan	Feb	Mar	Apr	May	Jun	Jul	Aug	Sep	Oct	Nov
Steers	20	17	17	19	18	19	18	17	16	15	18	19	18
Heifers	15	14	14	15	14	14	14	13	12	12	14	15	15
Young Bulls	5	4	4	5	5	5	6	7	7	6	6	5	6
Cows and Adult Bulls	17	12	13	12	10	11	10	10	11	11	13	14	14
Calves	2	2	2	2	2	2	1	1	1	2	2	2	2
Other Sheep and Lambs	268	263	220	224	224	196	182	209	239	265	277	301	271
Ewes and Rams	38	39	38	40	37	35	36	37	39	43	42	47	42
Clean Pigs	208	192	189	197	192	189	183	186	193	192	198	202	207
Sows and Boars	5	4	5	5	5	5	5	5	5	5	5	5	5

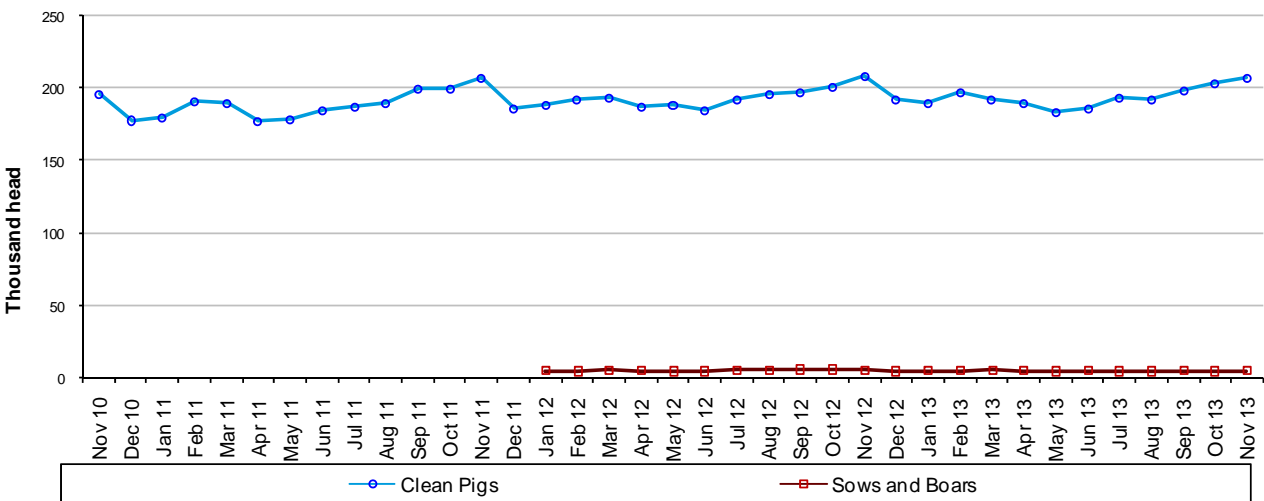
**Figure 4:1 United Kingdom average weekly numbers of cattle slaughtered**



**Figure 4:2 United Kingdom average weekly numbers of sheep slaughtered**



**Figure 4:3 United Kingdom average weekly numbers of pigs slaughtered**



Data for Oct 10 – Dec 11 is confidential

## Section 5: Monthly numbers of home killed livestock slaughtered by country

Table 5 shows monthly estimates of the number of cattle, sheep and pigs slaughtered for meat in England and Wales, Scotland, Great Britain and Northern Ireland. Data are shown in statistical months, rather than calendar months. The totals for the countries may not add up to the Great Britain totals or the United Kingdom totals in section one, due to rounding.

**Table 5: United Kingdom monthly numbers of livestock slaughtered by country**

	thousand head		
	September 2013	October 2013	November 2013
	4 weeks	5 weeks	4 weeks
<b>England &amp; Wales</b>			
Steers	45	59	47
Heifers	34	45	38
Young Bulls	16	18	15
Cows and Adult Bulls	38	49	42
Calves	8	10	7
Other Sheep and Lambs	942	1295	916
Ewes and Rams	160	228	162
Clean Pigs	644	827	675
Sows and Boars	20	24	19
<b>Scotland</b>			
Steers	15	20	15
Heifers	12	17	14
Young Bulls	3	3	2
Cows and Adult Bulls	6	7	6
Calves	0	0	0
Other Sheep and Lambs	120	154	122
Ewes and Rams	3	4	3
Clean Pigs	23	28	25
Sows and Boars	0	0	0
<b>Great Britain</b>			
Steers	61	79	62
Heifers	46	62	52
Young Bulls	19	21	17
Cows and Adult Bulls	43	56	48
Calves	8	10	7
Other Sheep and Lambs	1062	1449	1038
Ewes and Rams	163	232	165
Clean Pigs	668	855	700
Sows and Boars	20	24	19
<b>Northern Ireland</b>			
Steers	11	17	11
Heifers	8	12	10
Young Bulls	5	6	5
Cows and Adult Bulls	7	12	9
Calves	1	1	1
Other Sheep and Lambs	46	57	45
Ewes and Rams	3	4	4
Clean Pigs	125	157	126
Sows and Boars	0	0	0

## Section 6: Methodology, notes and revisions policy

1. The information in this notice is used by the UK government and the EU as evidence for assessing market conditions and evaluating agricultural policy. The slaughter statistics are also required by the EU under Regulation (EC) No 1165/2008. Other users include the food and farming industry, academia and the general public. Contact details are available on the front page of this notice, for you to send feedback or ask questions about the information provided.
2. Defra runs a monthly survey of registered England and Wales slaughterhouses. It is a statutory survey (approximately 105) that collects information on livestock slaughter numbers and weight of meat produced. All major slaughterhouses participate in the survey and the response rate is typically 100%. These data are supplemented by administrative data for smaller slaughterhouses. Similar surveys are run by RERAD in Scotland and by DARD in Northern Ireland. The England and Wales slaughter survey accounts for around 90% of the E&W slaughterhouse throughput for each livestock type.
3. Information on the weight of meat produced from a sample of animals weighed at slaughterhouses is obtained from survey respondents, around 55 slaughterhouse respondents. From the information provided average dressed carcass weights for each animal type are primarily calculated by adding up the total weight of the meat produced and dividing by the number of animals weighed. Cold dressed carcass weights are recorded.
4. The volume of meat production is estimated from the number of all livestock slaughtered and average dressed carcass weight information collected. This total 'Home killed' production includes livestock imported into the United Kingdom for slaughter.
5. The data are subject to a variety of validation checks which identify inconsistencies in the data. All data are cleaned prior to publication in discussion with the survey respondents.

### Revisions policy

6. Figures in this notice are provisional and subject to revision. We will provide information about any revisions we make to previously published information in this statistics notice and the associated datasets. Revisions could occur for various reasons, including:
  - a. if we have not received survey data from respondents we make an estimate based on their previous returns. These estimates will be replaced with actual survey data when it is received.
  - b. survey respondents occasionally supply amended figures for previous periods.
  - c. if we have not received administrative data for the smaller slaughterhouses we make an estimate based on previous data received. These estimates will be replaced with actual data when it is received.
7. **This month minor revisions have been made to the data from September 2013 onwards for the reasons given above.**