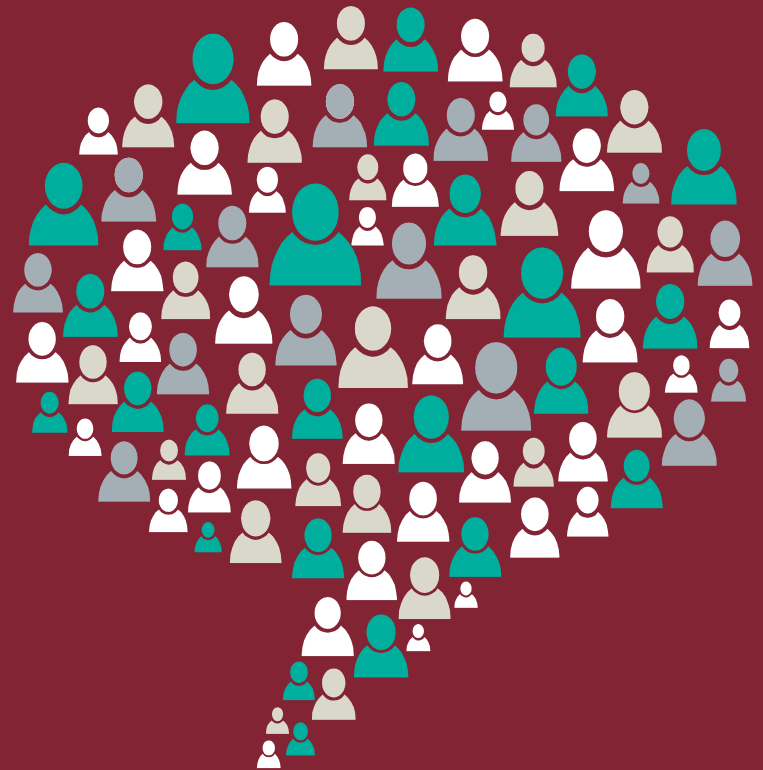




Public Health
England

Seven principles of public dialogue around health inequalities





Public Health
England

01

Ensuring transparency of purpose, objectives and intended outcomes

Ensure alignment with wider decision
making process

Provide clarity around aims and outcomes

Come to a consensus on objectives





Public Health
England

02

Using language which resonates with people

Start with lived experiences of people

Address the most visible issues

Challenge people to account for other perspectives





Public Health
England

03

Supporting safe, active, equal and informed discussion among all participants

Consider the group composition

Support learning opportunities

Enable everyone to contribute





04

Involving stakeholders



Carefully consider number and role

Gain clarity on pre-existing interests

Aim to minimise the power imbalance



Public Health
England

05

Incorporating an asset based approach in the dialogue

Link health outcomes and their
determinants

Harness stakeholders

Have a future focus





Public Health
England

06

Continuing the conversation

Provide clarity on outcomes

Keep in touch

Seek to maintain momentum





Public Health
England

07

Reviewing and improving the process

Reflect on the process

Share good practice

Adapt future dialogue and engagement

