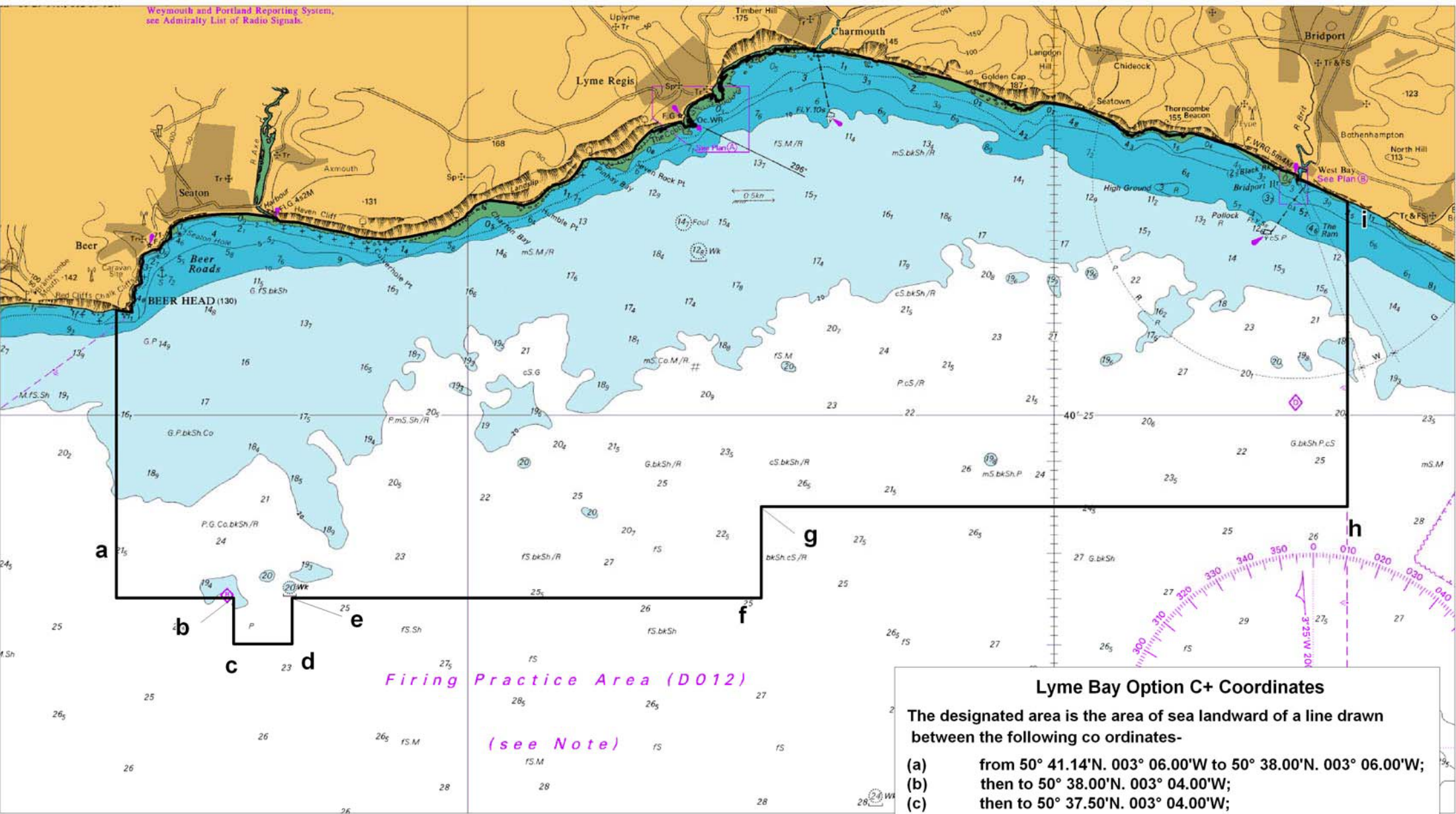


# The Lyme Bay Designated Area (Fishing Restrictions) Order 2008



**Lyme Bay Option C+ Coordinates**

The designated area is the area of sea landward of a line drawn between the following co ordinates-

- (a) from 50° 41.14'.N. 003° 06.00'.W to 50° 38.00'.N. 003° 06.00'.W;
- (b) then to 50° 38.00'.N. 003° 04.00'.W;
- (c) then to 50° 37.50'.N. 003° 04.00'.W;
- (d) then to 50° 37.50'.N. 003° 03.00'.W;
- (e) then to 50° 38.00'.N. 003° 03.00'.W;
- (f) then to 50° 38.00'.N. 002° 55.00'.W;
- (g) then to 50° 39.00'.N. 002° 55.00'.W;
- (h) then to 50° 39.00'.N. 002° 45.00'.W;
- (i) then to 50° 42.32'.N. 002° 45.00'.W.

Datum: Mercator WGS84

Scale 1:75000 Map 1 of 1  
0 1.5 3 3750yd.

Drawn by: Natural England  
Date: 10/07/2008  
Ref: rz99990005  
© Natural England 2008

Grid North

This map is based upon Ordnance Survey material with the permission of Ordnance Survey on behalf of the Controller of Her Majesty's Stationery Office. © Crown copyright. All Rights Reserved. Unauthorised reproduction infringes Crown copyright and may lead to prosecution or civil proceedings. Licence Number 100046223. 2008

British Crown and SeaZone Solutions Limited. All rights reserved. Product Licence No. PGAG02006.004. This product has been derived in part from material obtained from the UK Hydrographic Office (UKHO) with the permission of the Controller of Her Majesty's Stationery Office and the UKHO. NOT TO BE USED FOR NAVIGATION