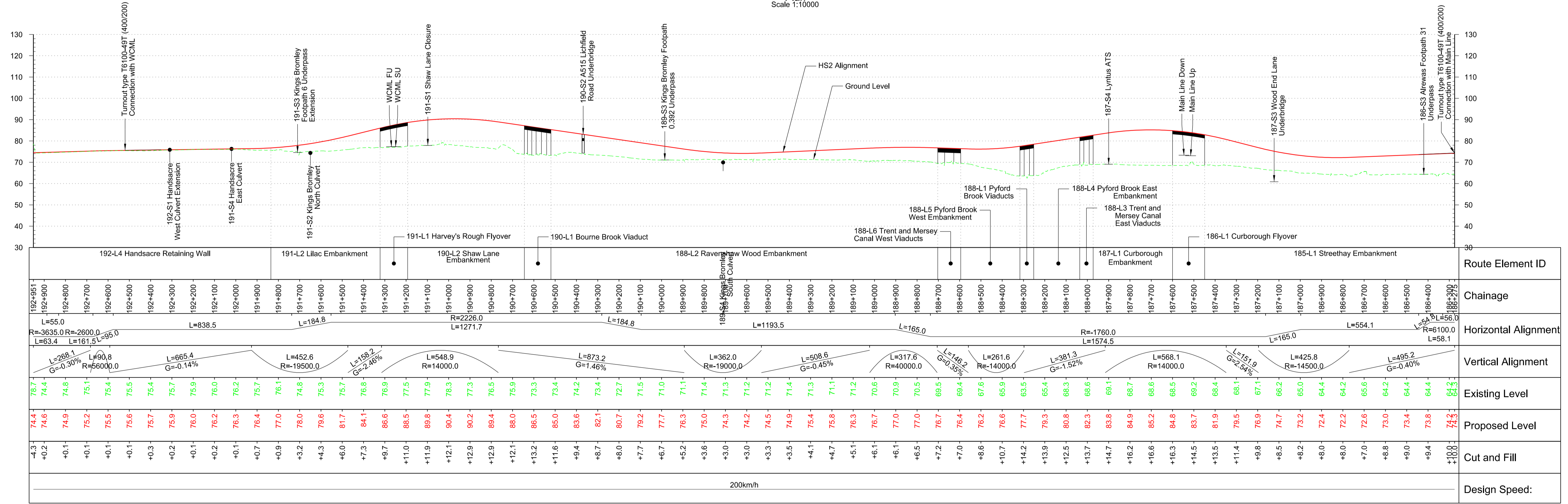


Plan
Scale 1:10000



Profile
Scale H 1:10000 V 1:1000

Rev	Description	Drawn	Checked	Con App	HS2 App
P10	Condition B. Code 1. Fit for hybrid bill submission	NOR	MC	PD	17/12/13
P09	Issued for CP3	NOR	MC	PD	29/11/13
P08	Revised Interim Condition B	NOR	MC	PD	21/10/13
P07	Revised Interim Condition B	NOR	PD	PD	29/08/13
P06	Interim Condition B	JHI	MC	PD	27/06/13

HS2 accepts no responsibility for any circumstances which arise from the reproduction of this document after alteration, amendment or abbreviation or if it is issued in part or issued incompletely in any way.

© Crown Copyright and Database right 2013. All rights reserved. Ordnance Survey Licence number 100049190

© Crown Copyright material is reproduced with the permission of Land Registry under delegated authority from the Controller of HMSO.

This material was last updated on 2013 and may not be copied, distributed, sold or published without the formal permission of Land Registry. Only an official copy of a title plan or register obtained from the Land Registry may be used for legal or other official purposes.

Scale with caution as distortion can occur.

Legends/Notes:

- Depot, station, headhouse or portal building
- Tunnel portal
- Electricity substation
- Land drainage area
- Ecological mitigation pond
- Balancing pond
- Replacement floodplain storage
- Woodland habitat creation
- Wetland habitat creation
- Grassland habitat creation
- Landscape mitigation planting (scrub / woodland)
- Grassed areas
- Sustainable placement
- Public realm
- Engineering earthworks
- Landscape earthworks
- Rail alignment formation
- Returned to suitable development use
- County boundary
- Borough / District boundary
- Community forum boundary
- Watercourse diversion
- Existing watercourse
- Ditches - new
- Hedgerow habitat creation
- Main utility works
- Existing public right of way (PRoW)
- New, diverted or realigned PRoW
- Stopped-up PRoW
- Tunnels external extent
- Rail alignment
- HS2 Access road
- Noise fence barrier
- Chainage (e.g. 10+000)

Registered in England
Registration No. 06791666
Registered office:
Eland House,
Bressenden Place,
London, SW1E 5DU

Creator/Organizer
Capita Symonds Ineco JV

HS2 Security Classification
INTERNAL

Zone
Country North

Design Stage
hybrid bill submission

Drawing Title
Main Line

Sheet 49 of 49

Chainage 186+200 to 193+000 Up Line

Project/Contract		Country North Design	
Discipline/Function	Civil		
Drawn	Checked	Approved	
NOR	PD	PD	
Date	Scale	Size	
11/03/2013	AS SHOWN	A1	
Drawing No.	Rev.		
C223-CSI-CV-DPP-030-000013	P10		