



Prioritisation of abandoned non-coal mine impacts on the environment

SC030136/R7 The Humber River Basin District

The Environment Agency is the leading public body protecting and improving the environment in England and Wales.

It's our job to make sure that air, land and water are looked after by everyone in today's society, so that tomorrow's generations inherit a cleaner, healthier world.

Our work includes tackling flooding and pollution incidents, reducing industry's impacts on the environment, cleaning up rivers, coastal waters and contaminated land, and improving wildlife habitats.

This report is the result of research commissioned and funded by the Department for Environment, Food and Rural Affairs (Defra) and the Welsh Government in collaboration with the Environment Agency.

Published by:

Environment Agency, Horizon House, Deanery Road,
Bristol, BS1 5AH

www.environment-agency.gov.uk

ISBN: 978-1-84911-256-7

© Environment Agency – March 2012

All rights reserved. This document may be reproduced with prior permission of the Environment Agency.

The views and statements expressed in this report are those of the authors alone. The views or statements expressed in this publication do not necessarily represent the views of the Environment Agency or Defra and the Environment Agency and Defra cannot accept any responsibility for such views or statements.

Further copies of this report are available from:
The Environment Agency's National Customer Contact Centre by emailing:
enquiries@environment-agency.gov.uk
or by telephoning 08708 506506.

Main Authors:

Mayes, W.M.,¹ and Jarvis, A.P.¹

Contributing Authors:

Coulon, P.,² Fox, A.,² Hill, S.,³ Johnston, D.,⁴ Potter, H.A.B.,⁴ Thorn, P.,² Watson, I.A.³

¹Newcastle University, ²Atkins Ltd, ³Coal Authority,
⁴Environment Agency

Dissemination Status:

Publicly available

Keywords:

Abandoned metal mines, mine water, pollution, river catchments, impact assessment, remediation, Water Framework Directive

Research Contractor:

Atkins Ltd., Coal Authority, Newcastle University.
Contact: Dr. Adam Jarvis, Newcastle University
Email: adam.jarvis@ncl.ac.uk

Environment Agency's Project Manager:

Dr Hugh Potter, Operations Directorate

Collaborators:

Department for Environment, Food and Rural Affairs
Welsh Government
Department for Communities and Local Government

Project Number:

SC030136/14

Product Code:

SCHO1111BUVC-E-E

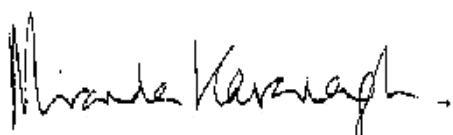
Evidence at the Environment Agency

Evidence underpins the work of the Environment Agency. It provides an up-to-date understanding of the world about us, helps us to develop tools and techniques to monitor and manage our environment as efficiently and effectively as possible. It also helps us to understand how the environment is changing and to identify what the future pressures may be.

The work of the Environment Agency's Evidence Directorate is a key ingredient in the partnership between research, guidance and operations that enables the Environment Agency to protect and restore our environment.

This report was produced by the Research, Monitoring and Innovation team within Evidence. The team focuses on four main areas of activity:

- **Setting the agenda**, by providing the evidence for decisions;
- **Maintaining scientific credibility**, by ensuring that our programmes and projects are fit for purpose and executed according to international standards;
- **Carrying out research**, either by contracting it out to research organisations and consultancies or by doing it ourselves;
- **Delivering information, advice, tools and techniques**, by making appropriate products available.



Miranda Kavanagh
Director of Evidence

Contents

1. Introduction	1
2. Water body impact categories	2
3. Water body validation and prioritisation	3
4. Mine site and discharge identification	3
5. Preparing for remediation: further investigations and monitoring (Programmes of Measures)	6
5.1 <i>Probably Impacted</i> water bodies	6
5.2 Catchment investigations – <i>Impacted</i> and <i>Probably Impacted</i> water bodies	7
6. Conclusions	8
References	8

List of tables

Table 1. Summary statistics showing final categorisation of water bodies across England and Wales (Stage 4, March 2009)	2
Table 2. Key information requested in Environment Agency questionnaire	6
Table 3. Example sites at which a phased approach to catchment monitoring is being undertaken by the Environment Agency	8
Table 4. Prioritisation of <i>Impacted</i> water bodies in the Humber RBD (all water bodies shown)	9
Table 5. Prioritisation of <i>Probably Impacted</i> water bodies in the Humber RBD (all water bodies shown)	10
Table 6. Mining discharge responses for the Humber RBD (all sites for which data provided by Environment Agency)	11

List of figures

Figure 1. Water bodies <i>Impacted</i> or <i>Probably Impacted</i> by abandoned non-coal mines in the Humber RBD	4
Figure 2. Non-coal mine impact scores for <i>Impacted</i> and <i>Probably Impacted</i> water bodies in the Humber RBD	5

1. Introduction

The *Prioritisation of abandoned non-coal mine impacts on the environment* project has generated the most definitive evaluation to date of the impacts on the water environment from abandoned non-coal mines across England and Wales. For the first time, an objective assessment has been carried out to prioritise the rivers in England and Wales where pollution from these mines has the highest impact, and where there is the greatest risk that water bodies (river stretches) will fail to meet the objectives of the Water Framework Directive (European Community, 2000) due to abandoned non-coal mines. The specific water bodies which should be the focus of immediate attention in River Basin Management Plans (RBMPs) have been identified, and the work needed to address mining pollution through both research into passive treatment technologies and catchment monitoring investigations is outlined.

This is one of 13 reports that detail the final results of the implementation of the methodology across England and Wales. This particular report presents the finalisation of the categorisation of surface water bodies for the Humber River Basin District, and also details of mine sites and mine waters, to be used as a basis for directing future remediation planning and / or further data collection.

In every report the 13 reports that comprise the outputs of the project are listed, so that the reader may cross-reference between them at need. They are:

- I. *A methodology for identification and prioritisation of abandoned non-coal mines in England and Wales*
- II. *Prioritisation of abandoned non-coal mine impacts on the environment: The national picture*
- III. *Prioritisation of abandoned non-coal mine impacts on the environment in the Dee River Basin District*
- IV. *Prioritisation of abandoned non-coal mine impacts on the environment in the Northumbria River Basin District*
- V. *Prioritisation of abandoned non-coal mine impacts on the environment in the South West River Basin District*
- VI. *Prioritisation of abandoned non-coal mine impacts on the environment in the Western Wales River Basin District*
- VII. *Prioritisation of abandoned non-coal mine impacts on the environment in the Humber River Basin District*
- VIII. *Prioritisation of abandoned non-coal mine impacts on the environment in the North West River Basin District*
- IX. *Prioritisation of abandoned non-coal mine impacts on the environment in the Severn River Basin District*
- X. *Prioritisation of abandoned non-coal mine impacts on the environment in the Anglian, Thames and South East River Basin Districts*
- XI. *Prioritisation of abandoned non-coal mine impacts on the environment in the Solway-Tweed River Basin District*
- XII. *Future management of abandoned non-coal mine water discharges*
- XIII. *Hazards and risk management at abandoned non-coal mine sites*

Much of the text in the individual River Basin District (RBD) reports (reports III-XI) are common to all 9 reports, though the information in the tables is different. A detailed description of the methodology used to produce these results is provided in Report I, while Report II provides a national overview of the findings. Implications of the results for future management of abandoned non-coal mine sites is dealt with at length in Report XII, while specific detail of the outputs of the data collated on mine hazards and risk management is provided in Report XIII. It is recommended that the individual RBD reports are read in conjunction with these other national-level reports.

2. Water body impact categories

The initial stage of the prioritisation exercise comprised use of existing data, from various sources, to categorise surface water bodies as *Impacted*, *Probably Impacted*, *Probably Not Impacted* and *Not Impacted*. This exercise was based on the spatial relationship between Environmental Quality Standard (EQS¹) failures in mining areas, or EQS failures immediately downstream of a mining area as described in detail in the Methodology report. The impact categories grade from *Impacted* where water quality failures are coincident in a water body with former mine sites, to catchments where the quality failures are either not associated with any former mining areas, or there are no reported water quality issues (*Not Impacted* water bodies). The risk categories prefixed “probably” are there to indicate uncertainty in the nature and extent of the link between mining and pollution. *Probably Impacted* describes a water body where there is a pollution problem but uncertainty persists as to whether the mining activity and downstream pollution issue are explicitly connected, either due to distance between source and receptor, or where there are no recorded mine sites in a polluted former mining area. *Probably Not Impacted* water bodies are those in mining areas where there is no water quality concern either in the host or downstream water body. The final numbers of water bodies in each of the impact categories are detailed by RBD in Table 1.

Table 1. Summary statistics showing final categorisation of water bodies across England and Wales (Stage 4, March 2009)

River Basin District (RBD)	Impacted	Probably Impacted	Probably Not Impacted	Not Impacted	Total
Anglian	0	1	181	831	1013
Dee	9	10	10	71	100
Humber	13	18	151	734	916
North West	15	27	63	427	532
Northumbria	28	39	38	262	367
Severn	31	32	89	599	751
Solway-Tweed	3	6	29	149	187
South East	0	0	88	308	396
South West	57	73	325	680	1135
Thames	0	0	154	490	644
Western Wales	70	37	143	619	869
Grand Total	226	243	1271	5170	6910

¹ The EQS values used for this project are detailed in the methodology report – see reference list. The metals / metalloids assessed were cadmium, lead, nickel, zinc, copper, iron, manganese, and arsenic.

3. Water body validation and prioritisation

After the initial categorisation of water bodies an online questionnaire was used to collate data from local experts at the Environment Agency. This process served to clarify whether the categorisations were valid (e.g. were area staff aware that the pollution in the mining area was due to something other than abandoned non-coal mines?) and to gather information on the extent of impact of non-coal mine pollution on other receptors (ecology, groundwater and water resources). Figure 1 shows the categorisation of water bodies in the Humber RBD. This information was used to allocate an individual score to each of the *Impacted* and *Probably Impacted* water bodies to describe the extent of the impacts of abandoned non-coal mine drainage, shown in Figure 2 (for details of the scoring system refer to the Methodology report).

Tables 4 and 5 (located at the end of the report) show the respective impact scores for the *Impacted* and *Probably Impacted* water bodies in the Humber RBD. By reading this report in conjunction with Report II (*The National Picture*), it is possible to see how the results fit into the national prioritisation. These tables contain only a selection of the results with the full details available as a database or a series of GIS (Geographical Information System) layers.

4. Mine site and discharge identification

The online questionnaire also collated data specific to mine sites themselves within the priority water bodies. A range of information was collected (Table 2) covering known polluting sites, the presence of point and diffuse pollution, water quality, flow rates, stakeholder concerns and risks and hazards at abandoned sites. This stage provides the crucial link between prioritising impacted water bodies (Tables 4 and 5) and identifying the polluting mine sites within them that could be the focus for future catchment scoping studies (see Section 5).

Summary details of all mining discharges identified in the Humber RBD are presented in Table 6. It is important to note that not all of the data gathered during the project is shown in the tables. This is simply because it is not possible to present all of this information in a written report such as this. The main items that have been omitted are:

- Water quality and flow-rate data for discharges where it is available
- Text comments relating to evidence of impacts and risks, and whether stakeholder issues are converging or diverging
- Detailed geographical references such as grid references.
- Stability, airborne pollution, safety issues, public / animal health concern information which is summarised nationally in the *Hazards and Risk Management* report and presented in their entirety in the database.

There were no mine sites reported in the Humber RBD with a 'Yes' or 'Suspected' response for outbreak risk.

Impacts from abandoned non-coal mines Humber River Basin District

This map illustrates the Humber River Basin District, highlighting the impacts of abandoned non-coal mines. The district's boundary is outlined in a thick blue line. A network of rivers and streams is shown in light blue, with many labeled, including the River Aire, River Don, River Ouse, River Trent, and River Humber. Mining discharges are indicated by purple arrows, often pointing into the river network. Water bodies are categorized into two groups: 'Impacted' (shown in red) and 'Probably impacted' (shown in orange). These areas are concentrated in the upper and middle reaches of several major rivers. A legend in the bottom right corner defines these symbols. Below the legend is a scale bar in kilometers (0 to 28 km) and a north arrow. Copyright information for the Environment Agency is provided at the very bottom.

Water bodies

- Impacted
- Probably impacted
- Mining discharges

0 7 14 21 28
Kilometers

© Crown copyright. All rights reserved.
Environment Agency, 100026380, 2004.

Figure 1. Water bodies *Impacted* or *Probably Impacted* by abandoned non-coal mines in the Humber RBD

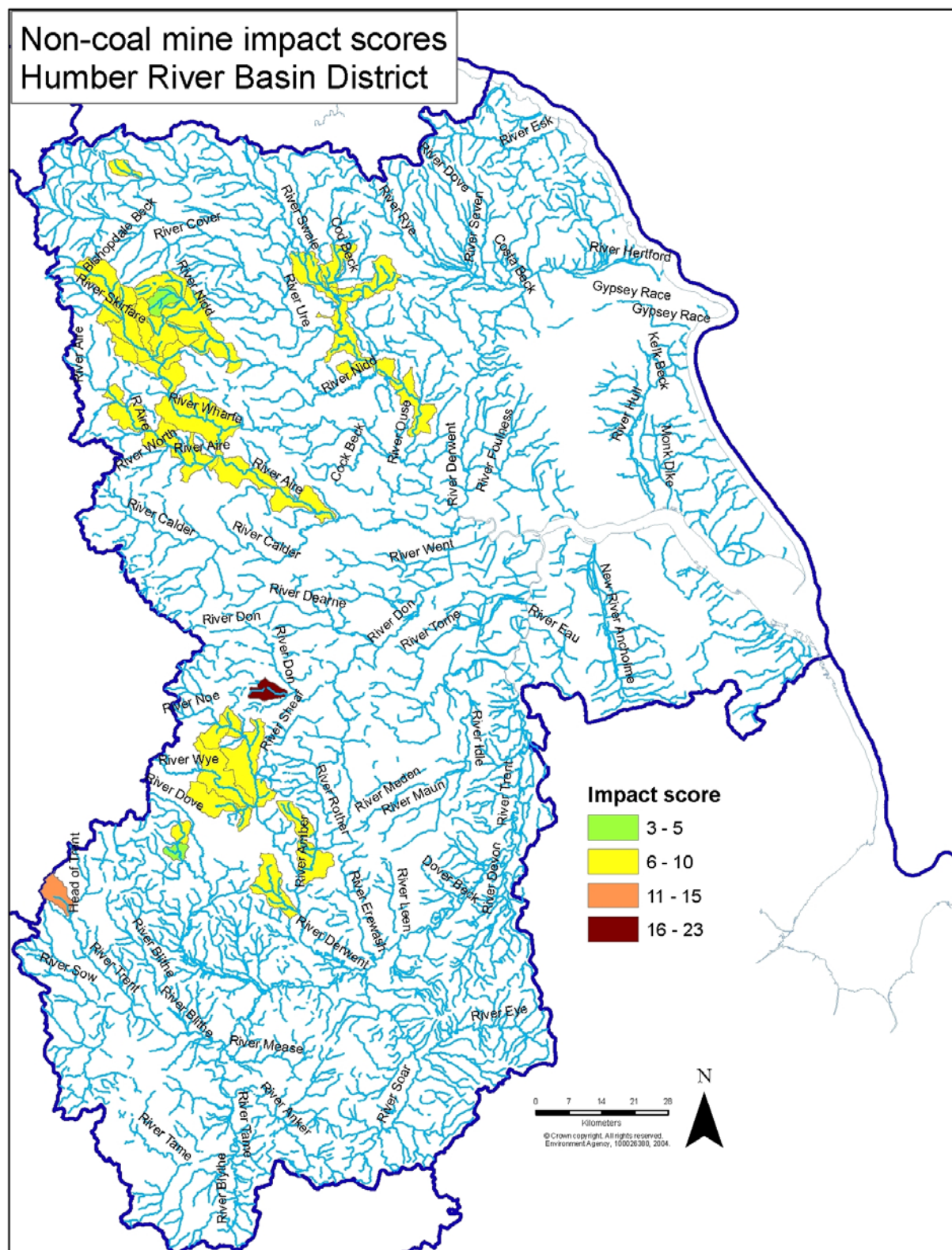


Table 2. Key information requested in Environment Agency questionnaire

Question / information requested	Comment
Water Body ID and Name	Information provided by Consortium
EQS failure co-ordinates and score	Information provided by Consortium
Categorisation (e.g. <i>Impacted</i> etc.)	Information provided by Consortium
Locations of point mine water discharges within water bodies with EQS failures, or in water bodies immediately upstream of water body with EQS failure	Required to characterise <i>Impacted</i> and <i>Probably Impacted</i> water bodies
If there is a mine water discharge (either point or diffuse) known or suspected then further information on the discharge is required	Including receiving watercourse name, groundwater, ecological and higher impacts, stakeholder information, and water quality
Knowledge of historical mines, irrespective of water pollution issues	Including mine location and name (if known), airborne pollution risk, safety concerns, stability concerns and outbreak risk

5. Preparing for remediation: further investigations and monitoring (Programmes of Measures)

This project has identified the surface water bodies which show the greatest impacts from abandoned non-coal mines, and so should be prioritised for action in the first cycle of River Basin Planning (RBP).

5.1 *Probably Impacted* water bodies

Many water bodies in mining areas are in the *Probably Impacted* category since we do not have water quality data from within the water body itself. We know that abandoned non-coal mines are present but not if they are the specific cause of the downstream pollution. Collecting new data on metal concentrations in these rivers would allow these water bodies to be moved either to *Probably Not Impacted* (if no EQS failures are identified) or to *Impacted* (if EQS are exceeded). All the data tables within the database are editable beyond the timescale of the project to allow such re-categorisation as new information comes to light.

Monitoring would need to be carried out over a 12 month period (ideally at monthly frequency) to ensure variation due to seasonal and flow effects is evaluated. It is recommended that collection of these data is prioritised in the first RBP cycle for the *Probably Impacted* water bodies with the highest impact scores (see Table 5).

5.2 Catchment investigations – *Impacted and Probably Impacted* water bodies

Unfortunately, with very few exceptions, we do not have sufficient monitoring data in any water bodies to allow remediation measures to be designed and implemented. This is the case even in the *Impacted* water bodies where we are confident that the pollution is due to abandoned mines, and have been able to identify significant point sources. This is a function of the type of monitoring data that need to be collected to characterise mine water pollution for remediation. Concentrations of metals in rivers or mine water discharges alone are not adequate, the flow must also be measured so that the loading (flux) can be calculated. Such data are rarely available from the Environment Agency's routine monitoring.

As a result, the first stage of implementing Programmes of Measures (POMs) for abandoned non-coal mine pollution is to carry out detailed synchronous monitoring of water quality and flow over at least a 12 month period in affected catchments. These further investigations will allow management and remediation schemes to be implemented in the second and third RBP cycle. If these data are not collected during the first RBP cycle, then it will not be possible to address the threat that pollution from abandoned mines poses to good ecological and chemical status.

The design and execution of such catchment monitoring programmes is described in the accompanying *Future Management of Abandoned Non-Coal Mine Discharges* report, and a comprehensive example of such a study is provided by Mayes *et al.* (2008). In general terms a phased approach is recommended:

1. Scoping study of the catchment (water body scale) to identify main sources of pollution using existing water quality data and other information sources. The data reported in Tables 4, 5 and 6 will inform these studies.
2. Design and implementation of detailed monitoring programmes to collect synchronous measurements of water quality and flow, as well as investigation of the river ecology over a period of at least 12 months.
3. Subject to the results of the monitoring programme, carry out feasibility study for the design and implementation of appropriate management and remediation measures, including pilot-scale treatment trials where appropriate. The suitability of various passive approaches to treatment is provided in the *Future Management of Abandoned Non-Coal Mine Discharges* report, and also by PIRAMID Consortium (2003).
4. Construct and operate management and remediation measures.

Examples of sites at which this phased approach is being implemented by the Environment Agency are shown in Table 3.

Table 3. Example sites at which a phased approach to catchment monitoring is being undertaken by the Environment Agency

RBD	Mine site / catchment
Western Wales	Parys Mountain, Cwm Rheidol, Dylife, Frongoch, Cwmystwyth, Conwy (Nant Gwydyr/Afon Crafnant)
Dee	Clywedog
Northumbria	Saltburn Gill, Rookhope Burn
North West	Coledale Beck

6. Conclusions

By assessing mine waters using water quality, ecological, groundwater and higher impact metrics it has proved possible to objectively prioritise *Impacted* and *Probably Impacted* water bodies into ranked lists. Furthermore, additional data stored in the database enables environmental managers to assess what the other issues are at these sites, such as safety issues, outbreak risk and stakeholder concerns. This information can be used to inform future management of pollution from abandoned non-coal mine sites.

References

- European Community (2000). Council Directive 2000/60/EC establishing a framework for Community action in the field of water policy. The Official Journal of the European Communities.
- Mayes, W.M., Gozzard, E., Potter, H.A.B. and Jarvis, A.P. (2008) Quantifying the importance of diffuse minewater pollution in a historically heavily coal mined catchment, *Environmental Pollution*, **151**, 165-175.
- PIRAMID Consortium (2003) *Engineering guidelines for the passive remediation of acidic and/or metalliferous mine drainage and similar wastewaters*. Passive In-situ Remediation of Acidic Mine / Industrial Drainage (PIRAMID) report, European Commission Fifth Framework Programme. Newcastle University.

Table 4. Prioritisation of *Impacted* water bodies in the Humber RBD (all water bodies shown)

RBD priority rank ²	Water body name	Water Body ID	EQS Score	Ranked EQS Score	Ecological Impact score	Higher Impact score	Groundwater Impact score	Overall Impact score ¹
1	River Loxley from Strines Dyke to Rivelin	GB104027057370	4	4	5	5	3	17
2	Lyme Brook Catchment (trib of Trent)	GB104028053340	6	4	2	5	0	11
3	River Amber from Source to Press Brook	GB104028052380	9	5	0	5	0	10
4	River Amber from Alfretton Brook to R Derwent	GB104028052330	8	5	0	5	0	10
5	Wharfe from Park Gill Bk to Barben Beck/River Dibb	GB104027064253	3	3	1	5	1	10
6	River Ecclesborne catchment (trib of R Derwent)	GB104028052720	6	4	0	5	0	9
7	River Wye from Monk's Dale to R Derwent	GB104028057820	5	4	0	5	0	9
8	River Derwent from R Ashop to R Wye	GB104028057880	4	4	0	5	0	9
=	Aire from Eshton Beck to Gill Beck (Baildon)	GB104027063031	4	4	0	5	0	9
=	Aire from Esholt STW to River Calder	GB104027063032	4	4	0	5	0	9
11	Barney Bk/Hard Level Gill from Source to R Swale	GB104027069080	8	5	1	1	1	8
12	River Lathkill from Source to R Bradford	GB104028058450	2	3	0	5	0	8
13	River Nidd from Howstean Beck to Birstwith	GB104027068293	1	3	0	5	0	8

Note: 1. Overall impact score = Ranked EQS + Ecological Impact + Higher Impact + Groundwater Impact. 2. EQS Score used to determine Overall priority rank where Overall impact scores are equal

Table 5. Prioritisation of *Probably Impacted* water bodies in the Humber RBD (all water bodies shown)

RBD priority rank ²	Water body name	Water Body ID	EQS Score	Ranked EQS Score	Ecological Impact score	Higher Impact score	Groundwater Impact score	Overall Impact score ¹
1	River Lathkill from R Bradford to R Wye	GB104028053460	5	1	5	0	4	10
=	Birdforth/Green's Bks Catch (trib of Swale)	GB104027068790	5	1	5	0	4	10
=	Cod Beck from Spital Beck to River Swale	GB104027068820	5	1	5	0	4	10
4	Hebden Beck Catchment (trib of Wharfe)	GB104027064190	2	2	5	0	3	10
5	River Swale/Ouse from Wiske to Naburn	GB104027069590	5	0	5	0	4	9
6	River Noe from Peakshole Water to R Derwent	GB104028057850	4	0	5	0	4	9
7	Fir Beck/Blands Beck Catchment (trib of Wharfe)	GB104027064080	2	1	5	0	3	9
=	River Skirfare from Cowside Beck to River Wharfe	GB104027064180	2	1	5	0	3	9
=	Park Gill Beck from Source to River Wharfe	GB104027069220	2	1	5	0	3	9
=	Wharfe from Oughtershaw Beck to Park Gill Beck	GB104027069290	2	1	5	0	3	9
11	River Manifold from Blake Brook to Warslow Brook	GB104028052920	1	1	5	0	3	9
=	River Nidd from Source to Howstean Beck	GB104027063890	1	1	5	0	3	9
13	Barben Beck/River Dibb Catchment (trib of Wharfe)	GB104027064120	3	0	5	0	3	8
14	Linton Beck Catchment (Trib of Wharfe)	GB104027064090	2	0	5	0	3	8
=	Wharfe Barben Beck/River Dibb to River Washburn	GB104027064252	2	0	5	0	3	8
16	River Nidd from Source to Howstean Beck	GB104027068380	1	0	5	0	3	8
17	Howstean Beck from Source to River Nidd	GB104027068300	1	1	0	0	3	4
18	River Manifold from Warslow Brook to River Hamps	GB104028052890	1	0	0	0	3	3

Note: 1. Overall impact score = Ranked EQS + Ecological Impact + Higher Impact + Groundwater Impact. 2. EQS Score used to determine Overall priority rank where Overall impact scores are equal

Table 6. Mining discharge responses for the Humber RBD (all sites for which data provided by Environment Agency)²

Water Body	Discharge name	Associated mine(s)	Receiving watercourse	Diffuse Pollution	Eco. Impact	G/W Impact	Higher Impact	Visual Impact	Stakeholder Issues	Complaints
GB104027057370	Loxley Bottom Mine Water		River Loxley	Yes	Yes	Yes	Yes	Yes	Yes	Yes
GB104027057370	Ughill Minewater	Ughill Mine	Wet Shaw Dyke	Yes	Suspected	No	No	Yes	No	No
GB104027057370	Stubbing, Myers Lane		Unnamed trib of River Loxley	Yes	Suspected	No	No	No	No	Yes
GB104027057370	Storrs Bridge Lane		Goes to Mill Pond, then River Loxley	Yes	Suspected	No	No	No	No	No
GB104027057370	Low Matlock Lane	Low Matlock Lane	Unnamed trib of River Loxley	Yes	Suspected	No	No	No	No	No
GB104027057370	Studfield Quarry	Studfield Hill	Unnamed trib of River Loxley	Yes	Suspected	No	No	No	No	No
GB104027057370	Wisewood Cemetry		Unnamed trib of River Loxley	Yes	Suspected	No	No	No	No	No
GB104027057370	Former Marshall Refractories	Storrs Bridge Works	River Loxley	Yes	Suspected	No	No	No	No	No
GB104027057440			Blackburn Brook	Yes	Yes	Yes	Yes	Yes	Yes	Yes
GB104027064253	Hebden Ghyll Mine adit- Dukes Lane raw	Hebden Moor	Hebden Beck	Unknown	Unknown	Unknown	Unknown	Unknown	Unknown	Unknown
GB104027064253			Wharfe from Park Gill Bk to Barben Beck/River Dibb	No	No	No	No	No	No	No
GB104027069080	Old Gang Mines	Old gang Mines	Flincher Gill/Hard Level Gill	Unknown	Unknown	Unknown	Unknown	Unknown	Unknown	Unknown
GB104027069080			Barney Brook/Hard Level Gill	No	No	No	No	No	No	No
GB104028052330	Fritchley Sough	Crich area mines	River Amber	No	No	No	No	No	No	No
GB104028052380	Cockwell Sough		River Amber	No	No	No	No	No	No	No
GB104028052390	see comment		River Derwent	No	No	No	No	No	No	No
GB104028052390	Yatestooop Sough		River Derwent	No	No	No	No	No	No	No
GB104028052390	Meerbrook Sough		River Derwent	No	No	No	No	No	No	No

² Note that not all information gathered is included in this table; limited data included only due to difficulties of presentation of all data in printed format. The complete dataset will be available with the GIS files associated with these reports.

**Would you like to find out more about us,
or about your environment?**

Then call us on

08708 506 506* (Mon-Fri 8-6)

email

enquiries@environment-agency.gov.uk

or visit our website

www.environment-agency.gov.uk

incident hotline 0800 80 70 60 (24hrs)

floodline 0845 988 1188

* Approximate call costs: 8p plus 6p per minute (standard landline).
Please note charges will vary across telephone providers



Environment first: This publication is printed on recycled paper.