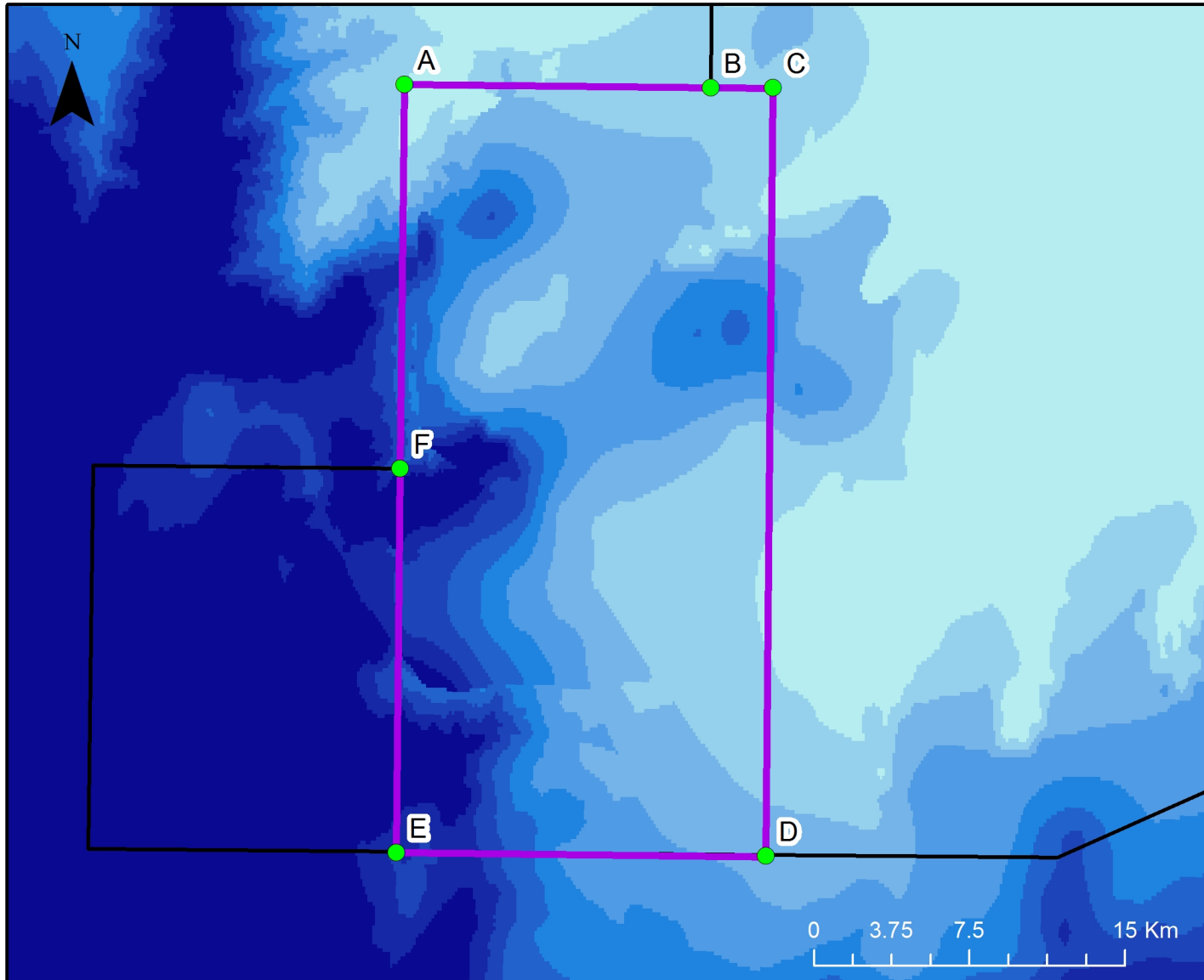


The Canyons MCZ



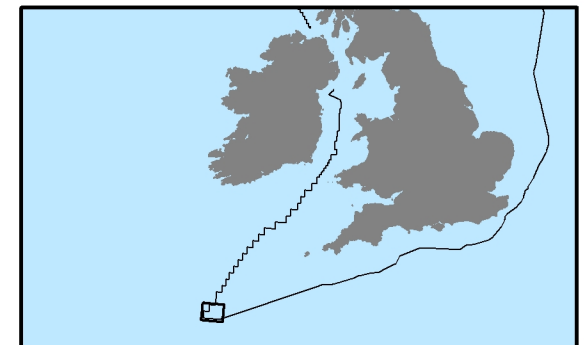
Legend

- MCZ Boundary
- UK Continental Shelf limit

Bathymetry (meters)

- >1,600
- <1,600 - 1,400
- <1,400 - 1,200
- <1,200 - 1,000
- <1,000 - 800
- <800 - 600
- <600 - 400
- <400 - 200
- <200

Site Area:
661km²



Map version number 2.1 Created by: AE

Boundary coordinates: A) 48°30'0"N, 9°48'0"W B) 48°30'0"N, 9°36'0"W C) 48°30'0"N, 9°33'33.4"W D) 48°10'0"N, 9°33'37.11"W
E) 48°10'0"N, 9°48'0.2"W F) 48°20'0"N, 9°48'0"W

Site map projected in UTM (Zone 31N, WGS84 datum). Bathymetry © British Crown Copyright 2011. This product has been derived in part from material obtained from the UK hydrographic Office with the permission of the Controller of Her Majesty's Stationery Office and UK Hydrographic Office (www.ukho.gov.uk). NOT TO BE USED FOR NAVIGATION. The exact limits of the UK Continental Shelf are set out in orders made under section 1(7) of the Continental Shelf Act 1964 (© Crown Copyright). Map copyright JNCC 2013.