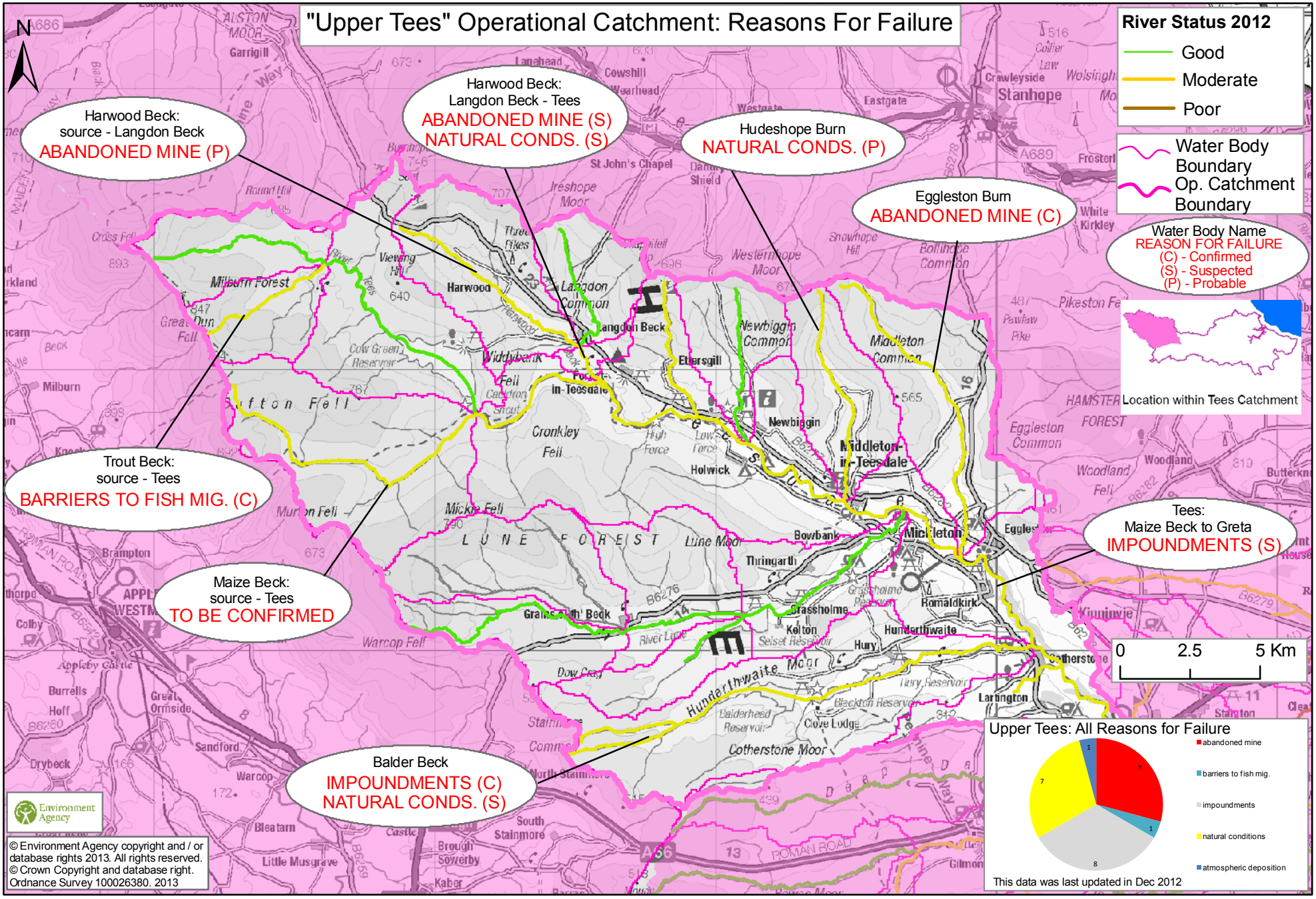


Figure 1. Op. Catchments within the Tees Catchment.

Failing Elements 2012	Fish	Invertebrates	Phytobenthos	Macrophytes	Flow	Mitigation Measures Ass.	Expert Judgement	Ph	Ammonia	Phosphate	Copper	Iron	Dichlorvos	Zinc	Dissolved Oxygen
	Op. Catchment														
Saltburn Coastal Area	4	1	2	1		1		1				2			1
Leven	3	2	3			1				2					3
Skerne	1	5	4		5	4			3	7					3
Lower Tees and Estuary	4	8	10	1	4	5	10		5	10			1		5
Middle Tees	11		3	1	1	1				2	1				
Upper Tees	4	1			1	1		2			2			2	

Table 1. Summary of WFD Failing elements within the Tees Subcatchments. 2012 Assessment. (Mitigation Measures Ass. refers to 'heavily modified' Water Bodies requiring a programme of physical works to improve their status.)

# "Upper Tees" Operational Catchment: Reasons For Failure



Harwood Beck:  
source - Langdon Beck  
**ABANDONED MINE (P)**

Harwood Beck:  
Langdon Beck - Tees  
**ABANDONED MINE (S)**  
**NATURAL CONDS. (S)**

Hudeshope Burn  
**NATURAL CONDS. (P)**

Eggleston Burn  
**ABANDONED MINE (C)**

Trout Beck:  
source - Tees  
**BARRIERS TO FISH MIG. (C)**

Maize Beck:  
source - Tees  
**TO BE CONFIRMED**

Balder Beck  
**IMPOUNDMENTS (C)**  
**NATURAL CONDS. (S)**

Tees:  
Maize Beck to Greta  
**IMPOUNDMENTS (S)**

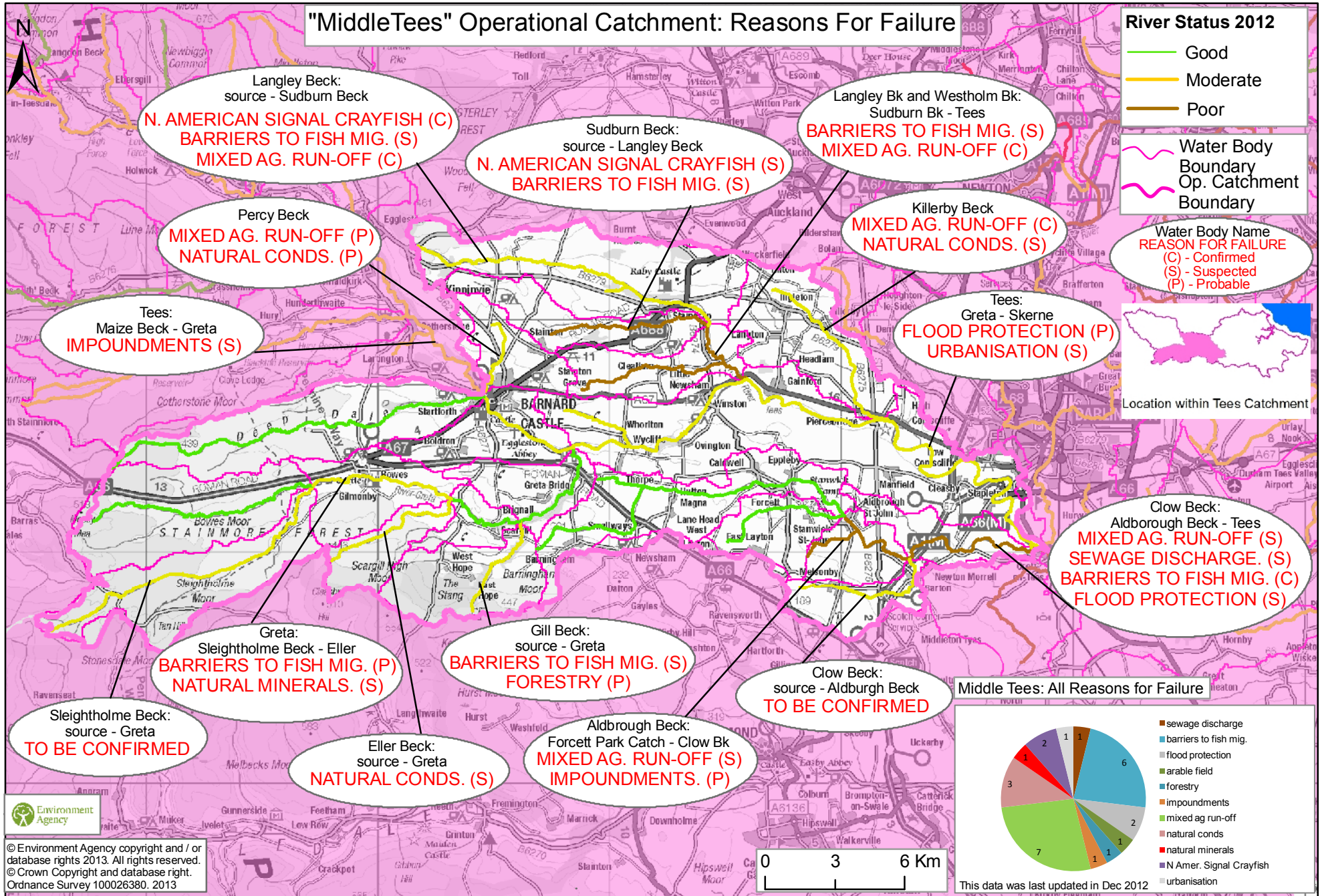
# "MiddleTees" Operational Catchment: Reasons For Failure

## River Status 2012

- Good
- Moderate
- Poor

- Water Body Boundary
- Op. Catchment Boundary

- Water Body Name
- REASON FOR FAILURE
- (C) - Confirmed
- (S) - Suspected
- (P) - Probable



Langley Beck:  
source - Sudburn Beck  
**N. AMERICAN SIGNAL CRAYFISH (C)**  
**BARRIERS TO FISH MIG. (S)**  
**MIXED AG. RUN-OFF (C)**

Sudburn Beck:  
source - Langley Beck  
**N. AMERICAN SIGNAL CRAYFISH (S)**  
**BARRIERS TO FISH MIG. (S)**

Langley Bk and Westholm Bk:  
Sudburn Bk - Tees  
**BARRIERS TO FISH MIG. (S)**  
**MIXED AG. RUN-OFF (C)**

Percy Beck  
**MIXED AG. RUN-OFF (P)**  
**NATURAL CONDS. (P)**

Killerby Beck  
**MIXED AG. RUN-OFF (C)**  
**NATURAL CONDS. (S)**

Tees:  
Maize Beck - Greta  
**IMPOUNDMENTS (S)**

Tees:  
Greta - Skerne  
**FLOOD PROTECTION (P)**  
**URBANISATION (S)**

Clow Beck:  
Aldbrough Beck - Tees  
**MIXED AG. RUN-OFF (S)**  
**SEWAGE DISCHARGE. (S)**  
**BARRIERS TO FISH MIG. (C)**  
**FLOOD PROTECTION (S)**

Greta:  
Sleightholme Beck - Eller  
**BARRIERS TO FISH MIG. (P)**  
**NATURAL MINERALS. (S)**

Gill Beck:  
source - Greta  
**BARRIERS TO FISH MIG. (S)**  
**FORESTRY (P)**

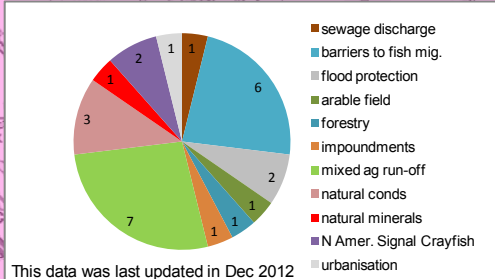
Clow Beck:  
source - Aldbrough Beck  
**TO BE CONFIRMED**

Sleightholme Beck:  
source - Greta  
**TO BE CONFIRMED**

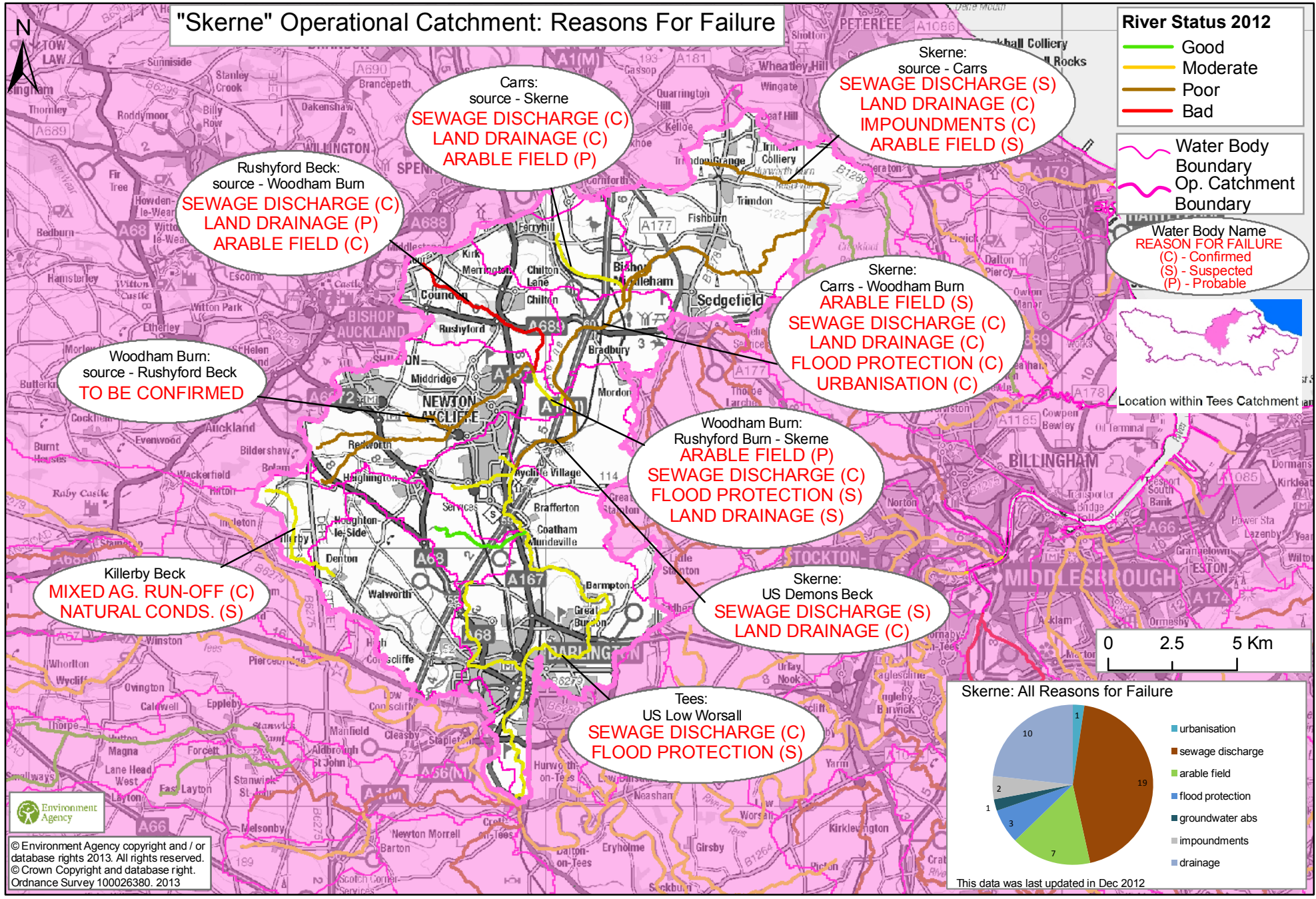
Eller Beck:  
source - Greta  
**NATURAL CONDS. (S)**

Aldbrough Beck:  
Forcett Park Catch - Clow Bk  
**MIXED AG. RUN-OFF (S)**  
**IMPOUNDMENTS. (P)**

Middle Tees: All Reasons for Failure



# "Skerne" Operational Catchment: Reasons For Failure

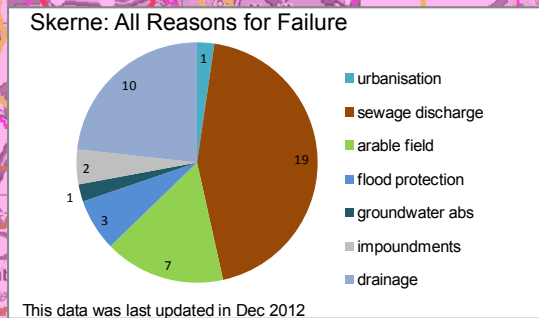
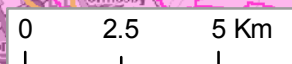


**River Status 2012**

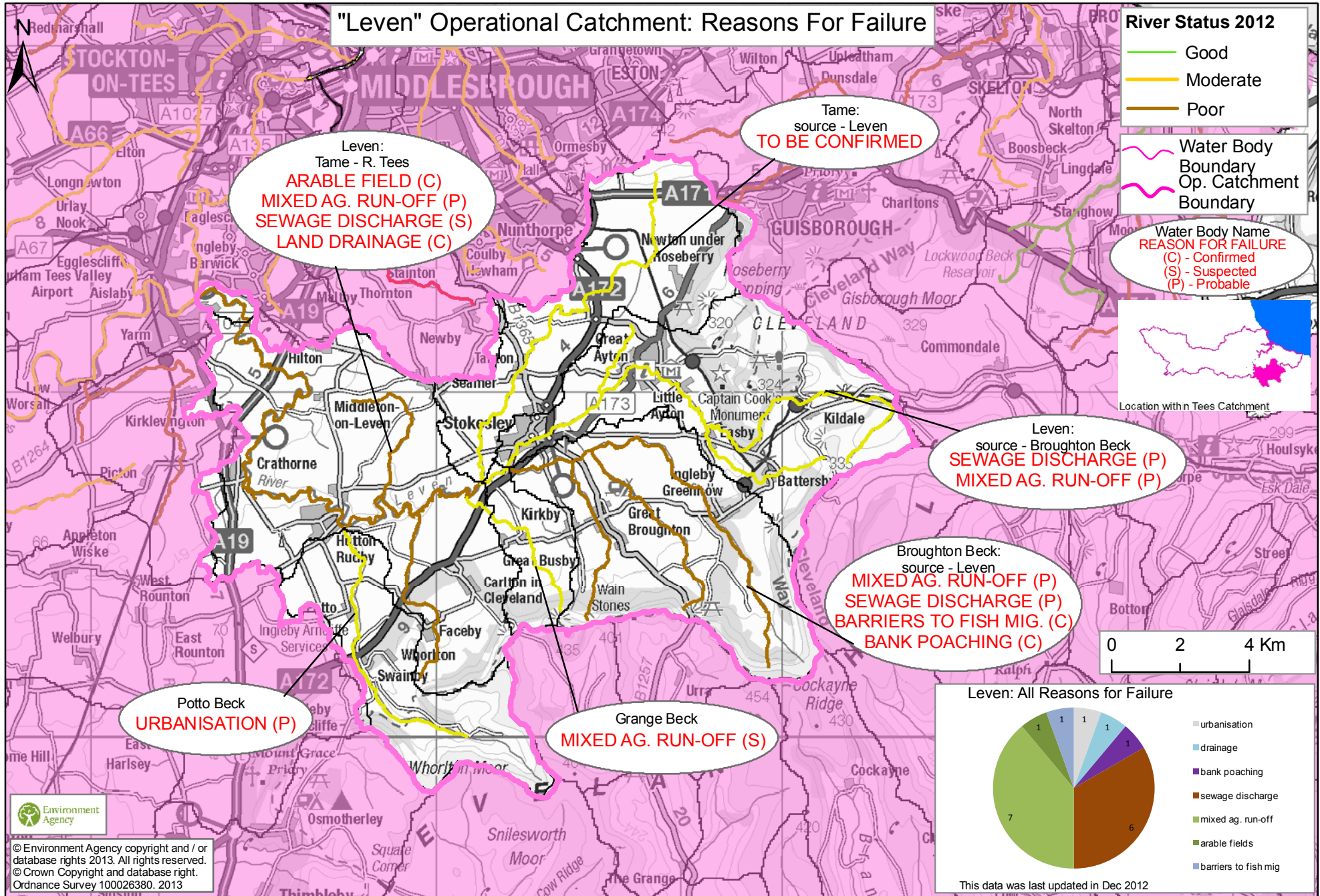
- Good
- Moderate
- Poor
- Bad

**Water Body Boundary**  
— Water Body Boundary  
— Op. Catchment Boundary

**Water Body Name**  
**REASON FOR FAILURE**  
(C) - Confirmed  
(S) - Suspected  
(P) - Probable



# "Leven" Operational Catchment: Reasons For Failure



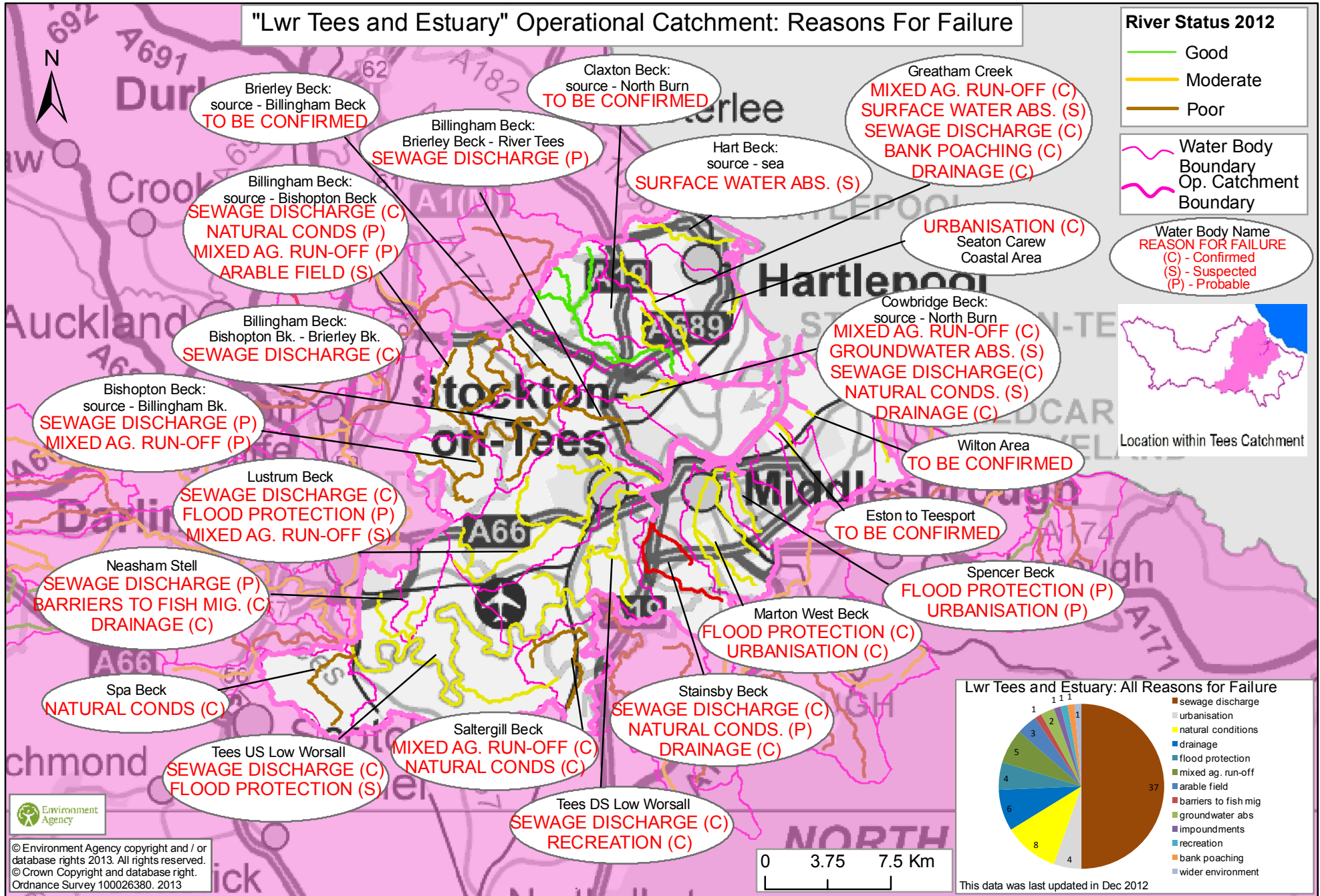
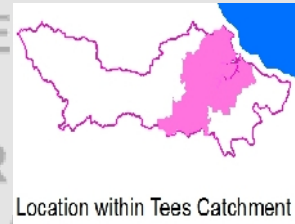
# "Lwr Tees and Estuary" Operational Catchment: Reasons For Failure

## River Status 2012

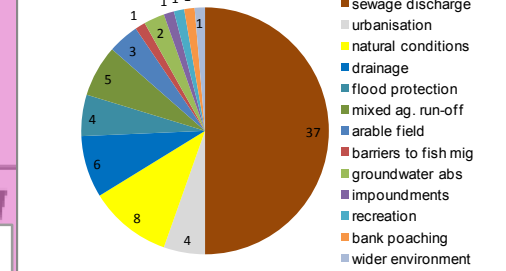
- Good
- Moderate
- Poor

- Water Body Boundary
- Op. Catchment Boundary

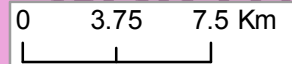
- Water Body Name  
REASON FOR FAILURE
- (C) - Confirmed
  - (S) - Suspected
  - (P) - Probable



Lwr Tees and Estuary: All Reasons for Failure



This data was last updated in Dec 2012



# "Saltburn Coastal Area: Operational Catchment: Reasons For Failure

