



Maritime and Coastguard Agency

Amendments to the entry requirements for Engineer Officer Certificates of Competency

Notice to all Owners, Engineer Officers, Trainee Engineers and those concerned with Maritime Training

This notice should be read with MGN 93.

This notice will expire on publication of the revision of MGN 93 'Certificates of Competency – engine department'.

Summary

- The engineering officer certification structure has been amended to reduce impact of the International Convention on Standards of Training, Certification and Watchkeeping 1978, as amended, (**STCW 95**) on shipping companies operating in the near coastal area.
- Marine Engineer Operators Licence (**MEOL**) examination to be incorporated with the Engineering Officer of the Watch (**EOOW**) oral examination.
- Senior Marine Engineer Operators Licence (**SMEOL**) examination to be incorporated with the Second Engineer (unlimited and restricted power) oral examination.
- New Certificate of Competency (**CoC**), Second Engineer <3000kW Near Coastal available at EOOW level providing appropriate sea service completed.
- Sea service requirement for Second Engineer <3000kW Unlimited Area amended.
- Sea service requirement for Chief Engineer <3000kW Unlimited Area from Second Engineer Unlimited amended.
- Engineering Science added to the International Association of Maritime Institutions (**IAMI**) EOOW suite of examinations leading to the issue of the EOOW CoC.

1 Introduction/ Background

- 1.1 Following the introduction of the amendments to STCW 78 in 1995 (STCW 95), the only CoC available on completion of an Engineering Cadetship, or other entry scheme, was EOOW. In contrast under the previous structure a candidate undergoing a similar examination (Class 4) would have gained Second Engineer <750kW Unlimited Area and Second Engineer <3000kW Limited European Area in addition to the Engineering Watchkeeping Certificate with unlimited power and area.
- 1.2 The following amendments to the engineering certificate structure are to reduce the impact on the near coastal shipping industry whilst maintaining both actual requirements and the spirit of STCW 95.
- 1.3 With the exception of section 7 the following amendments apply to Motorships only.

2. Marine Engine Operators Licences

- 2.1 MEOL are certificates used on UK flagged vessels below the STCW certificate structure limit of 750kW.
- 2.2 The MEOL examination will be integrated with the EOOW (Regulation III/1) oral examination.
- 2.3 The SMEOL examination will be integrated with the Second Engineer (Regulation III/3 <3000kW and Regulation III/2 Unlimited kW) oral examinations.
- 2.4 Holders of an EOOW CoC may take the MEOL as a separate examination.
- 2.5 Holders of either Second Engineer (Regulation III/3 <3000kW and Regulation III/2 Unlimited kW) may take the SMEOL as a separate examination.

3. Second Engineer <3000kW Near Coastal

- 3.1 A new CoC has been created for Second Engineers on vessels having less than 3000kW propulsion power, which operate within the UK Near Coastal Area.
- 3.2 To be eligible to sit this oral examination a candidate must have completed:
 - six months sea service above that required to be eligible to sit the EOOW oral examination; and
 - have a total of nine months watchkeeping or Unmanned Machinery Space (**UMS**) duties.

The sea service must be served in the Engine Room on a vessel having a propulsion power of 350kW or more.

- 3.3 The Second Engineer <3000kW Near Coastal oral examination may be taken at the same time as the EOOW oral examination if the sea service requirement has been met.

4. Second Engineer <3000kW Unlimited 6000kW Near Coastal

- 4.1 This is an existing qualification however, the entry requirements have been amended.
- 4.2 To qualify for this CoC a candidate must pass the following Scottish Qualification Authority (**SQA**) written examinations:
- General Engineering Science I & II (or hold exemptions); and
 - Engineering Knowledge I & II
- and pass the MCA Second Engineer <3000kW Unlimited 6000kW Near Coastal oral examination.
- 4.3 To be eligible to sit this oral examination a candidate must have completed:
- six months sea service above that required to be eligible to sit the EOW oral examination three months of which must be whilst holding an EOW CoC; and
 - have a total of nine months watchkeeping or UMS duties.

The sea service must be served in the Engine Room on vessel having a propulsion power of 350kW or more.

5. Chief Engineer <3000kW Unlimited

- 5.1 To qualify for this CoC a candidate must pass or already have passed the following SQA written examinations:
- General Engineering Science Examinations I & II (or hold exemptions); and
 - Engineering Knowledge I & II
- and pass the MCA Chief Engineer <3000kW Unlimited oral examination.
- 5.2 Candidates following the limited propulsion power route must meet the following criteria to be eligible to sit this oral examination:
- hold either Second Engineer <3000kW Near Coastal CoC or Second Engineer <3000kW (Unlimited Area) CoC; and
 - have completed an additional 12 months sea service whilst holding either of those certificates.

The sea service must:

- be served in the Engine Room on vessels having a propulsion power of 750kW or more; and
 - include nine months watchkeeping or UMS duties.
- 5.3 Candidates following the unlimited power and area route must meet following criteria to be eligible to sit this oral examination:
- hold Second Engineer Unlimited (power and area) CoC
 - have 12 months sea service in a position of responsibility (i.e. minimum of Engineer Officer in Charge of a Watch or UMS duties) since obtaining EOW on vessels having a propulsion power of 750kW or more.
- 5.4 The Chief Engineer <3000kW Unlimited oral examination may be taken at the same time as the Second Engineer Unlimited oral examination if the sea service requirement has been met.

6. Chief Engineer <6000kW Near Coastal Endorsement

- 6.1 To be eligible to hold the <6000kW Near Coastal endorsement a candidate must have completed 30 months sea service above that required for entry to the EOOW oral examination (e.g. in the case of candidates who have completed a Merchant Navy Training Board (**MNTB**) 30 month training programme, which requires a minimum 6 months sea service, progression to Chief Engineer <6000kW will be 36 months sea service from entry).

7. Engineer Officer of the Watch General Engineering Science Examinations

- 7.1 Two examination papers (covering Mathematics, Applied Mechanics, Applied Heat, Electrotechnology and Naval Architecture) are being added to the IAMI suite of examinations leading to the EOOW CoC.
- 7.2 Any candidate applying for an EOOW CoC through the IAMI examination route after 21st April 2006 must have passed the IAMI General Engineering Science A & B examinations as well as the IAMI Engineering Knowledge examinations and the MCA oral examination.
- 7.3 The IAMI General Engineering Science examinations will be available from the week commencing Monday 24th April 2006.

More Information

Seafarer Training and Certification Branch
Maritime and Coastguard Agency
Bay 1/17
Spring Place
105 Commercial Road
Southampton
SO15 1EG

Tel : +44 (0) 23 8032 9231
Fax : +44 (0) 23 8032 9252
e-mail: exams.section@mcga.gov.uk

General Inquiries: 24 Hour Infoline
infoline@mcga.gov.uk
0870 600 6505

MCA Website Address: www.mcga.gov.uk

File Ref: MC 124/001/0050

Published: May 2006

© Crown Copyright 2006

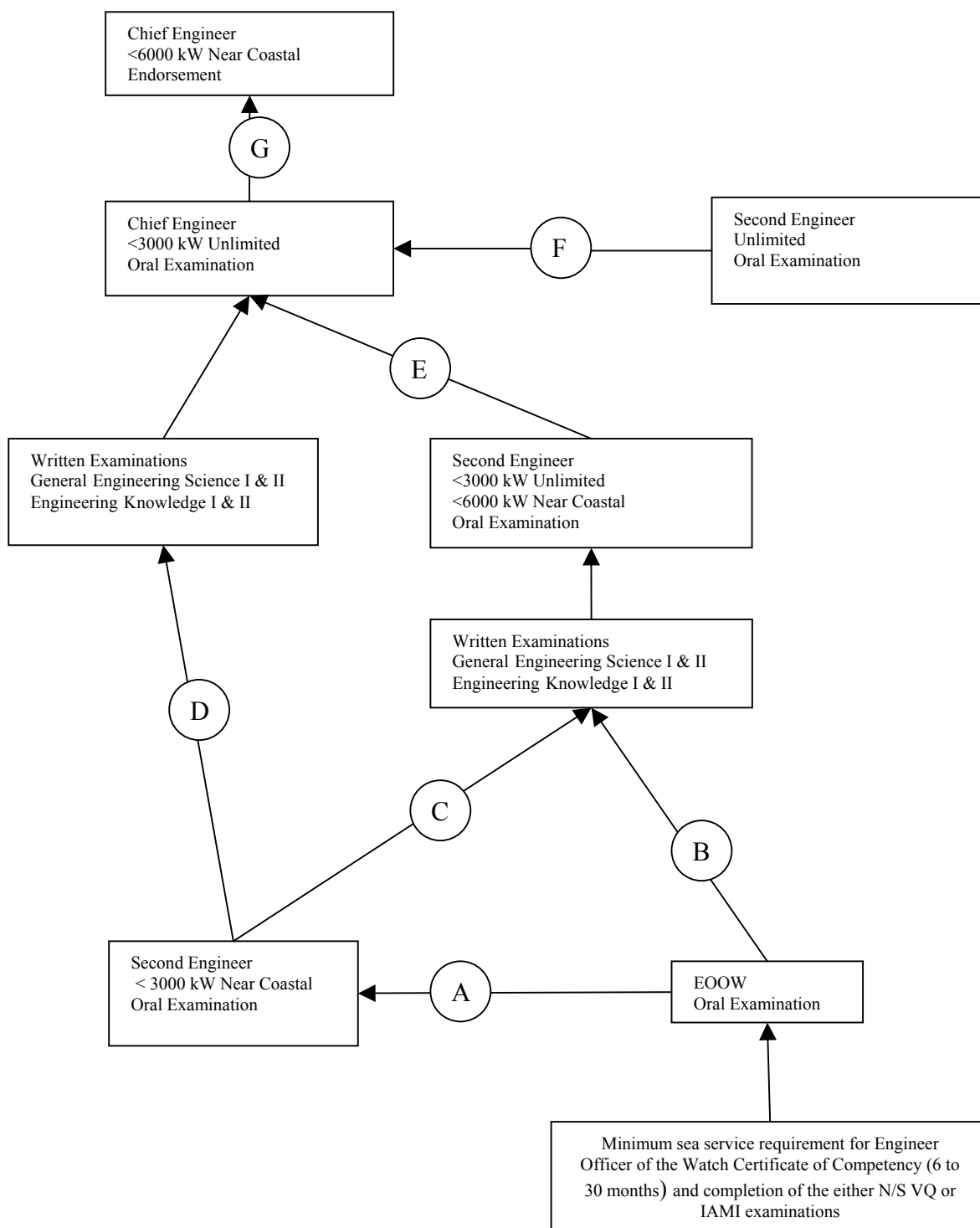
Safer Lives, Safer Ships, Cleaner Seas

Printed on material containing minimum 75% post-consumer waste paper



*An executive agency of the
Department for
Transport*

Progression Diagram for Engineer Officers – Motorships only



- A 6 months sea service above that required to be eligible to sit the EOOW oral examination. The sea service must be served in the Engine Room on vessel having a propulsion power of 350kW or more, and there must be a total of 9 months watchkeeping or UMS duties. The Second Engineer <3000kW Near Coastal oral examination may be taken at the same time as the EOOW oral examination if the sea service requirement has been met.
- B & C 6 months sea service above that required to be eligible to sit the EOOW oral examination 3 months of which must be whilst holding EOOW CoC. The sea service must be served in the Engine Room on vessel having a propulsion power of 350kW or more, and there must be a total of 9 months watchkeeping or UMS duties.
- D & E 12 months sea service whilst holding either Near Coastal or Unlimited Second Engineer <3000kW. The sea service must be served in the Engine Room on vessel having a propulsion power of 750kW or more, 9 months of which must be in a watchkeeping or UMS duties.
- F Must have 12 months sea service in a position of responsibility (i.e. minimum of Engineer Officer in Charge of a Watch or UMS duties) since obtaining EOOW on vessels having a propulsion power of 750kW or more.
- G Must have 30 months appropriate sea service above that required to be eligible for the EOOW oral examination.