



It's August – some like it hot but your vaccines don't – keep them cool at all times

Vaccines have to be kept between +2 and +8°C to retain their effectiveness - hence the need for a cold chain at all stages of their production and distribution, right up to giving the vaccine into the patient's thigh, arm, nose or mouth. This is why many practices have taken simple, practical steps to ensure their fridge simply cannot be switched off accidentally

With the August bank holiday just days away, it's vitally important that surgeries and clinics ensure that their vaccine fridges are not accidentally turned off or fridge doors left open during the long weekend.

Please make sure that:

- all your staff, including receptionists and temporary staff, know that vaccines must be put in the fridge immediately they are delivered
- all cleaners know that they must replace the fridge plug, and check it is switched on, if they have to remove the plug for any reason (it's better to have a dedicated electric supply to your fridge)
- the last person to leave your surgery or clinic knows to check that the fridge is running and its doors securely shut.

Vaccines are very expensive medical products that need proper care if they are to work effectively and protect the people to whom they are given. It's your responsibility to ensure your vaccines are not wasted. There are many low-cost gadgets available from electrical suppliers that can be used to protect sockets and prevent plugs being removed accidentally – simply Google 'Preventing the accidental removal of electric plugs'. You could also put a sign on the back of the surgery door saying 'Would the last person to leave please make sure that the vaccine fridge is switched on'. A few pounds spent on these items today will save thousands of pounds in the future and ensure that you are able to give your patients the best possible service.

For recommended practice on how to order, store and look after vaccines see [web link 1](#)



Make sure you're switched on to preventing vaccine wastage

Immunisation news

Clarification of eligibility for the shingles vaccine

All people aged 70 or 79 **on 1 September 2013** (born on 2/9/1942 to 1/9/1943 or on 2/9/1933 to 1/9/1934 respectively) are eligible for shingles vaccination this year. Those who become 70 or 79 **after** 1 September 2013 will not be eligible for the vaccine this year, and will become eligible for vaccination in future years of the programme.

Eligibility has been defined in this way because of the limited supply of vaccine available this year. Vaccinating in 2013/14 those who turn 70 or 79 after 1 September 2013 may mean that vaccine supplies fall short. The following chart shows who is eligible and who is not eligible this year.

In addition, because of the cohort definition for this year's catch-up campaign, it is likely that some of those aged 79 on 1 September will have turned 80 by the time they attend for vaccination. As these people were 79 at the start of the programme, they remain entitled to receive the vaccine under the NHS Constitution. In this circumstance only, the vaccine should be administered to those aged 80. The Green Book shingles chapter is being updated to reflect this and will be made available shortly.

| Date of birth | Age on 1 September 2013 | Eligible in 2013/14 |
|----------------------|-------------------------|---------------------|
| 2/9/1943 to 1/9/1944 | 69 | No |
| 2/9/1942 to 1/9/1943 | 70 | Yes |
| 2/9/1941 to 1/9/1942 | 71 | No |
| 2/9/1940 to 1/9/1941 | 72 | No |
| 2/9/1939 to 1/9/1940 | 73 | No |
| 2/9/1938 to 1/9/1939 | 74 | No |
| 2/9/1937 to 1/9/1938 | 75 | No |
| 2/9/1936 to 1/9/1937 | 76 | No |
| 2/9/1935 to 1/9/1936 | 77 | No |
| 2/9/1934 to 1/9/1935 | 78 | No |
| 2/9/1933 to 1/9/1934 | 79* | Yes |
| 2/9/1932 to 1/9/1933 | 80 | No |

*Patients who are 79 on 1 September 2013 may become 80 before attending for vaccination. These patients should still be given the vaccine.

Some patients may ask to be given shingles vaccine before they become eligible, either because they were aged 69 or below on 1 September 2013, or because they were aged 71 to 78 on this date. Because of the limited supply of vaccine, vaccinating patients earlier than indicated could result in eligible patients being unable to receive vaccine. Vaccine stock will, however, be carefully monitored, and if any age cohort can be vaccinated earlier this will be communicated through the usual channels.

Patients who have previously had shingles may be keen to receive the vaccine early; however, these patients should be reassured that having the natural infection will help to boost their immune response to the shingles virus, and they should be advised to wait until eligible for vaccination.

For further information on when to give the shingles vaccine, please refer to the Q&A for healthcare professionals at [web link 2](#)

Quadrivalent influenza vaccine

It has been brought to our attention that the tripartite letter on the UK influenza immunisation programme for 2013/14 (see [web link 3](#)) contained an error regarding the component viruses of the quadrivalent influenza vaccine. Where the letter indicated that the quadrivalent vaccine contains an additional component - Influenza 'B/Brisbane/3/2007 (Yamagata)', this should have read 'B/Brisbane/60/2008'.

For clarity, the flu strains that are included in the 2013/14 trivalent seasonal influenza vaccine are:

- an A/California/7/2009 (H1N1) pdm09-like virus,
- an A(H3N2) virus antigenically like the cell-propagated prototype virus A/Victoria/361/2011,
- a B/Massachusetts/2/2012-like virus

and quadrivalent influenza vaccines will in addition include:

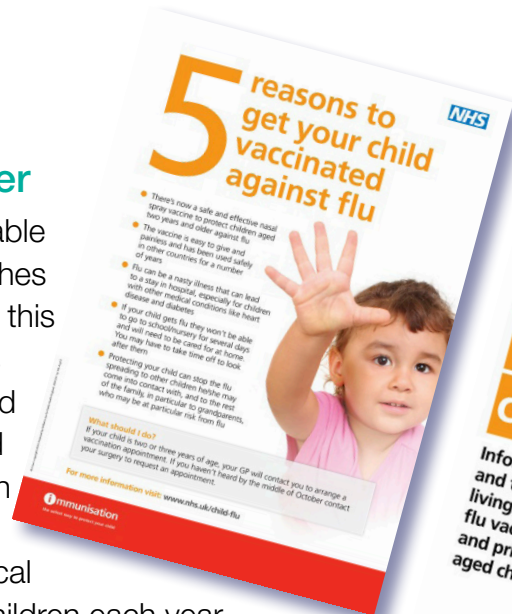
- a B/Brisbane/60/2008-like virus.

Resources

Children's flu leaflet and poster

These two publications should be available when this issue of Vaccine Update reaches you, see [web link 4](#). They both support this year's flu vaccination programme that is aimed at healthy two- and three-year-old children. They are also being distributed to the parents of primary school children in certain areas of the country to see what is the most acceptable and practical way of immunising around ten million children each year in a time period of two or three months, which is the long-term aspiration of the national flu vaccination programme.

The publications are available as usual from the Publications Orderline at [web link 5](#)

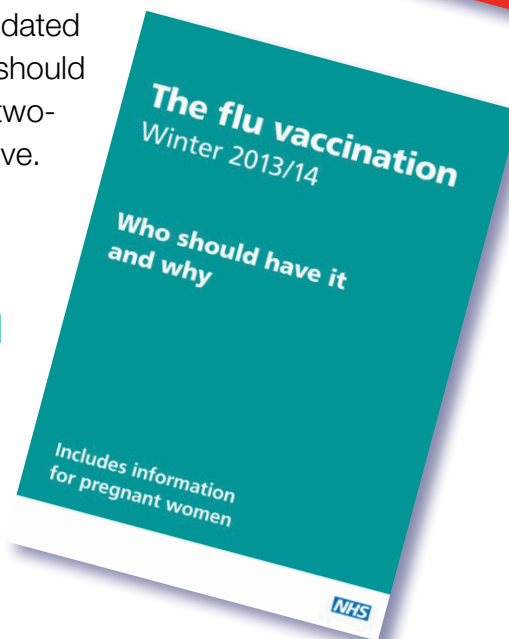


Flu vaccination leaflet winter 2013/14

This year's flu vaccination leaflet has been updated to incorporate the latest information on who should have the vaccine and why, including healthy two- and three-year-old children as described above.

Won't all these vaccines overload my baby's immune system?

How often do you get asked that question? See [web link 6](#) for a short animation that you can show to parents to answer it.



Vaccine supply

Flu vaccine for children

Fluenz[®] vaccine has been procured centrally for the extension of the flu vaccination programme to two- and three-year-old children starting in September 2013.

Fluenz[®] vaccine for these children only, will be available to order via the ImmForm website from Monday 9 September, and will be delivered on your usual scheduled delivery day where this is in place.

Please be aware that the shelf-life of Fluenz[®] is relatively short. Orders made from the first batch available will expire by mid-December.

For those two- and three-year-olds who are contraindicated to Fluenz[®], inactivated influenza vaccines that have already been ordered by GPs for two- and three-year-old children in clinical risk groups, can now be utilised for the Fluenz[®]-contraindicated children. If you experience difficulty in sourcing inactivated influenza vaccine for the contraindicated two- and three-year-olds please contact the ImmForm helpdesk on 0844 376 0040 or helpdesk@immform.org.uk for assistance.

Supplies of Fluenz[®] for vaccinating children other than those aged two and three, such as those with a clinical condition which makes them more at risk from the effects of flu, should be ordered direct from the manufacturer on 0845 139 0000.

HPV vaccine

There is still a small stock of Cervarix[®] vaccine available to order for any remaining girls partially vaccinated who require a final dose. This vaccine will no longer be available to order via ImmForm from 1 October 2013.

Gardasil[®] vaccine is available for all girls who have started their course with Gardasil[®].

Typhoid vaccine

Sanofi Pasteur MSD has limited stock of their typhoid vaccine, Typhim Vi[®]. They are unable to accept new orders at this time and will provide an update as soon as further information is available.

Vivotif is currently available under restricted supply and Janssen expect supplies to return to normal by early September.

Web links

- web link 1** https://www.gov.uk/government/uploads/system/uploads/attachment_data/file/216177/dh_130276.pdf
- web link 2** https://www.gov.uk/government/uploads/system/uploads/attachment_data/file/212231/Shingles_QA_for_healthcare_professionals.pdf
- web link 3** https://www.gov.uk/government/uploads/system/uploads/attachment_data/file/207008/130613_Flu_Letter_v_29_Gateway_GW_signed.pdf
- web link 4** <https://www.gov.uk/government/organisations/public-health-england/series/annual-flu-programme>
- web link 5** http://www.orderline.dh.gov.uk/ecom_dh/public/home.jsf
- web link 6** <http://www.nhs.uk/Conditions/vaccinations/Pages/How-vaccines-work.aspx>

Vaccine update subscriptions: <https://public.govdelivery.com/accounts/UKHPA/subscribers/new?preferences=true>