

SFR 23/2010

3rd August 2010

Coverage: England

**Theme: Children
Education and
Skills**

Issued by

Department for Education
Sanctuary Buildings
Great Smith Street
London SW1P 3BT

Telephone:

Press Office
020 7925 6789

Public Enquiries
0870 000 2288

Statistician

Adam Hatton

Email

Attainment.STATISTICS@
education.gsi.gov.uk

Internet

<http://www.dcsf.gov.uk/rsgateway/DB/SFR/s000949/index.shtml>

NATIONAL CURRICULUM TESTS AND TEACHER ASSESSMENTS AT KEY STAGE 2 & 3 IN ENGLAND, 2010 (PROVISIONAL)

Headlines

The results of tests taken by pupils in May 2010 show that the percentage of 11-year old pupils achieving the expected level has increased in English and mathematics, compared to a year earlier. Within English, the proportion of 11-year olds achieving the expected level has increased for writing but decreased for reading. Girls continue to perform better than boys in English, reading and writing. This year the percentage of girls at the expected level in mathematics is equal to that of boys for the first time since 2004.

The changes in English overall and mathematics are small and should be interpreted with caution. This is because the differences between these figures and the revised figures released alongside the Achievement and Attainment Tables later in the year are historically between ± 1 percentage point. As some schools did not administer tests this year the national results may be over-stated by one percentage point.

An additional release to be published on 10 August 2010 will provide information on the performance nationally of pupils in science tests.

There are no longer statutory tests for 14 year old pupils.

The equivalent results from teachers' own assessment of pupils have in many cases increased compared to those in 2009; attainment at the expected level for 11 year olds in science has slightly decreased. Teacher assessments are reported for 11 and 14 year old pupils.

Introduction

All children in maintained primary schools are required to sit National Curriculum tests in English and maths before they move to secondary schools. The tests are graded according to levels within the National Curriculum¹. Key Stage 2 (KS2) tests are aimed at pupils working at levels 3, 4 and 5.

Typical age of child (years)	5	6	7	8	9	10	11	12	13	14
National Curriculum Year Group	R	1	2	3	4	5	6	7	8	9
Key Stage	1		2				3			
Expected National Curriculum level at end of Key Stage	2		4				5/6			

Figure 1: Typical age of child related to year group, key stage and expected level of attainment (R denotes reception year)

¹ The following website provides information on how pupils are expected to perform at each National Curriculum level in each subject for Key Stage 1 and 2:

<http://curriculum.qcda.gov.uk/key-stages-1-and-2/assessment/assessmentofsubjects/index.aspx>

National Curriculum tests are a measurement of achievement against the precise attainment targets of the National Curriculum rather than any generalised concept of ability in any of the subject areas. Teacher Assessment is the teachers' judgement of pupils' performance in the whole subject over the whole academic year. The National Curriculum standards have been designed so that most pupils will progress by approximately one level every two years. This means that by the end of KS2 pupils are expected to achieve **Level 4**, by the end of Key Stage 3 (KS3) pupils are expected to achieve **Level 5 or 6**.

This Statistical First Release (SFR) provides provisional information on the achievements of eligible pupils in the 2010 National Curriculum tests and teacher assessments at KS2 and KS3. Pupil results were released to schools on 6th July 2010; the figures in this SFR are produced from data provided to the Department by the Qualifications and Curriculum Development Agency (QCDA) on 26th July 2010. This data has also been made available today to schools and local authorities via *Key to success*. This release provides information at national and local authority (council) level.

From 2010, KS2 science tests for the whole cohort have been discontinued. Schools are still required to provide teacher assessments, which are reported in this release. As it is important to continue to monitor national standards in science at the end of KS2, externally-marked science sampling has been introduced from 2010. These results will be reported at national level only in a separate Statistical Release on 10 August 2010.

Key Stage 2 test results for 2010

Chart 1a: The percentages of pupils achieving Level 4 or above in the 2010 Key Stage 2 tests by subject and gender.

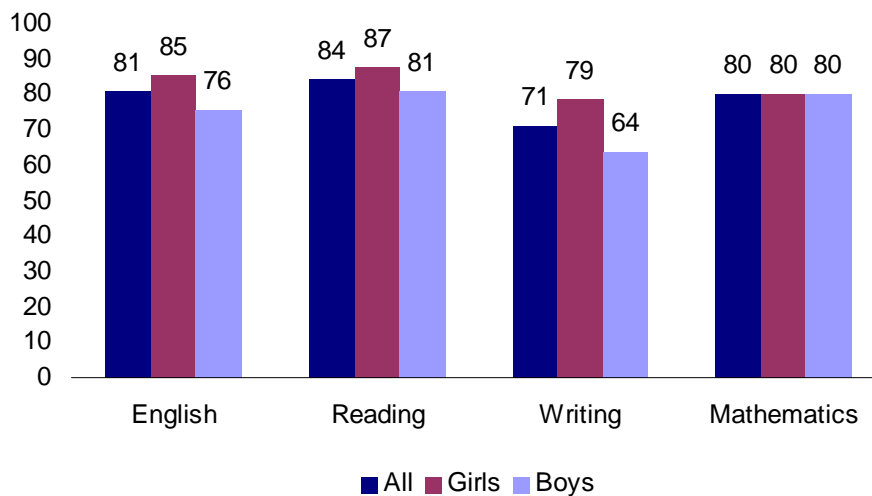
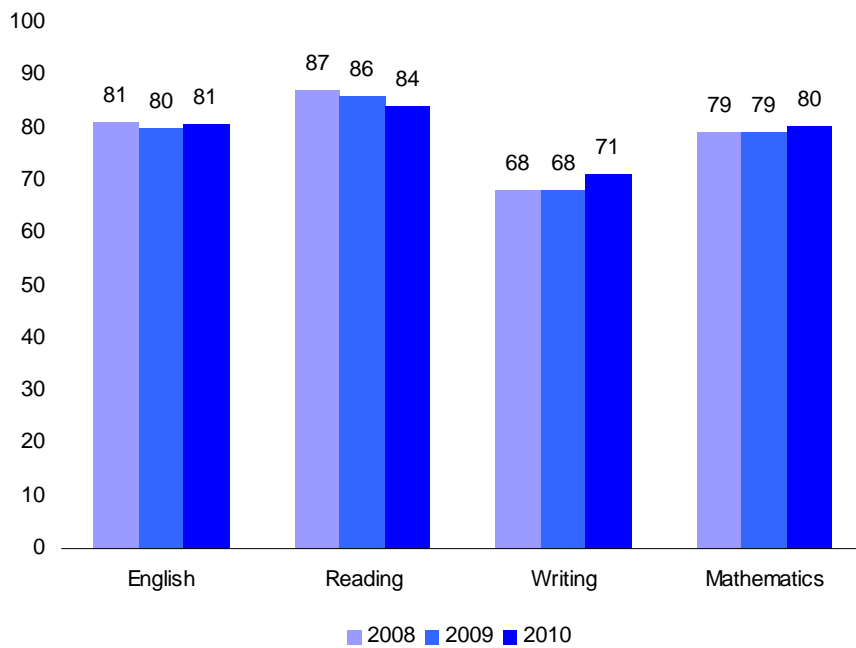


Chart 1b: 3-year trend in percentages of pupils achieving Level 4 or above in Key Stage 2 tests



Key Stage 2 teacher assessment results for 2010

Chart 2a: The percentages of pupils achieving Level 4 or above in 2010 Key Stage 2 teacher assessments by subject and gender.

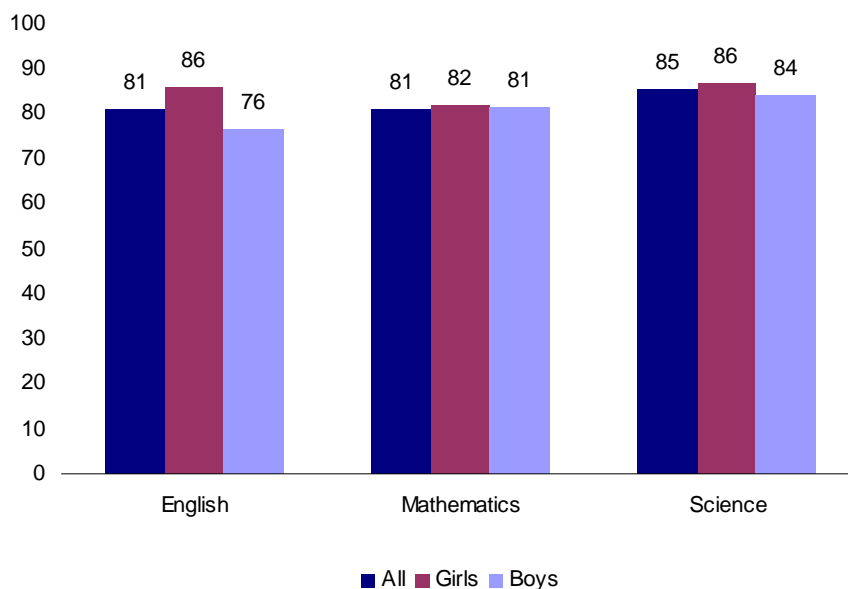
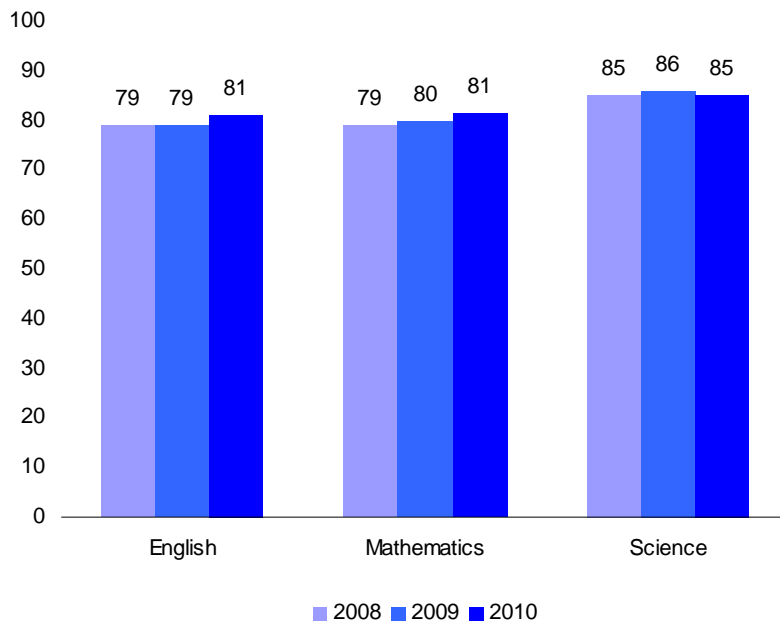


Chart 2b: 3-year trend in percentages of pupils achieving Level 4 or above in Key Stage 2 teacher assessments



Key Stage 3 teacher assessment results for 2010

Chart 3a: The percentages of pupils achieving Level 5 or above in 2010 Key Stage 3 teacher assessments by subject and gender.

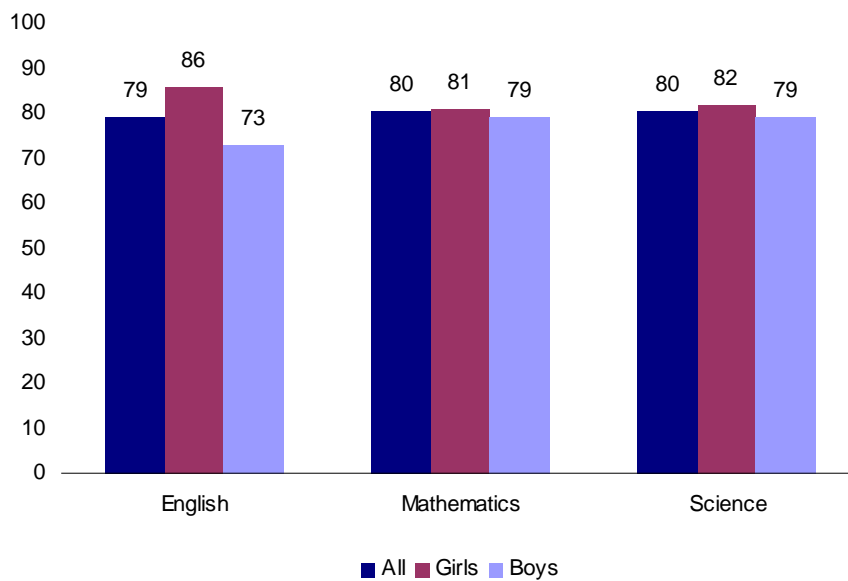
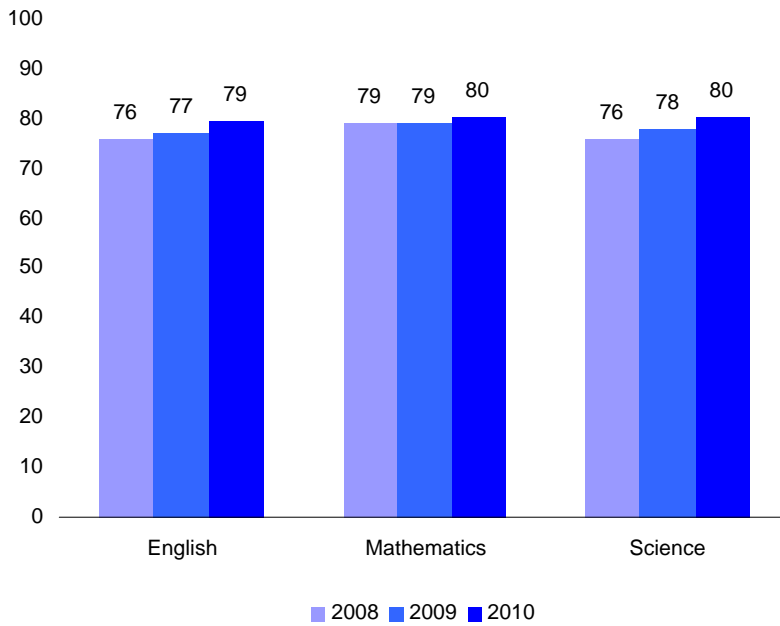


Chart 3b: 3-year trend in percentages of pupils achieving Level 5 or above in Key Stage 3 teacher assessments



Performance of 11 year olds in English and mathematics tests

A good grounding in the ‘basics’ of English and mathematics is seen by many as essential at the end of Key Stage 2. This can be measured by looking at the proportion of pupils who reached at least level 4 in both English and mathematics:

The latest figures show that, in 2010 the percentage of pupils achieving level 4 or above in both English and mathematics was 74 per cent, an increase of two percentage points compared to 2009.

Chart 4a: Percentages of pupils achieving Level 4 or above and Level 5 in both English and mathematics, 2005-2010

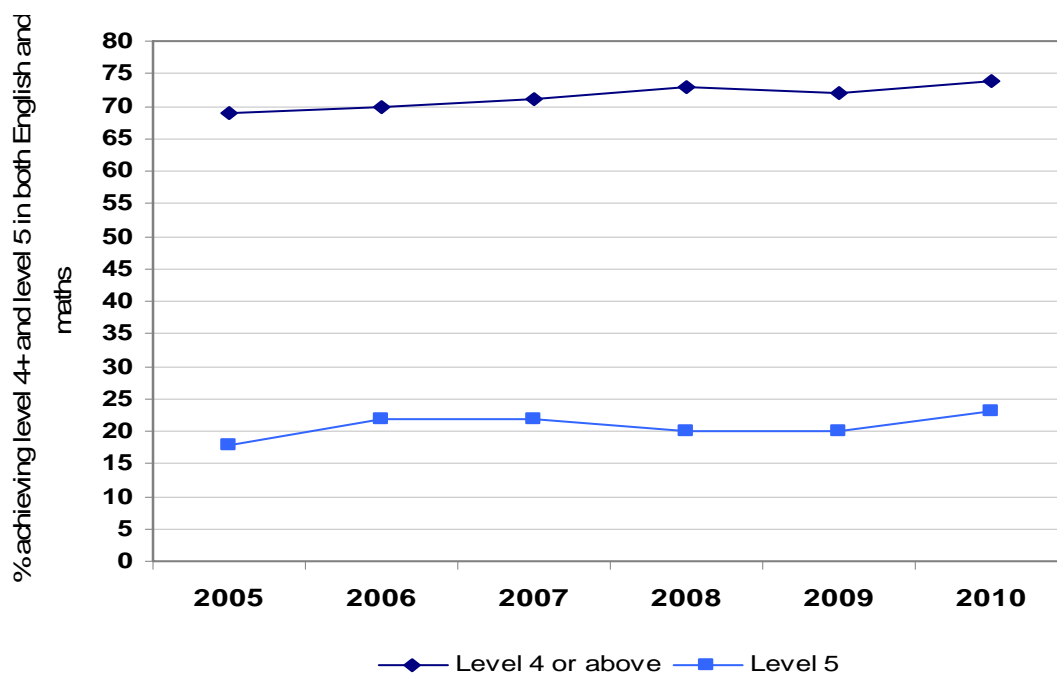
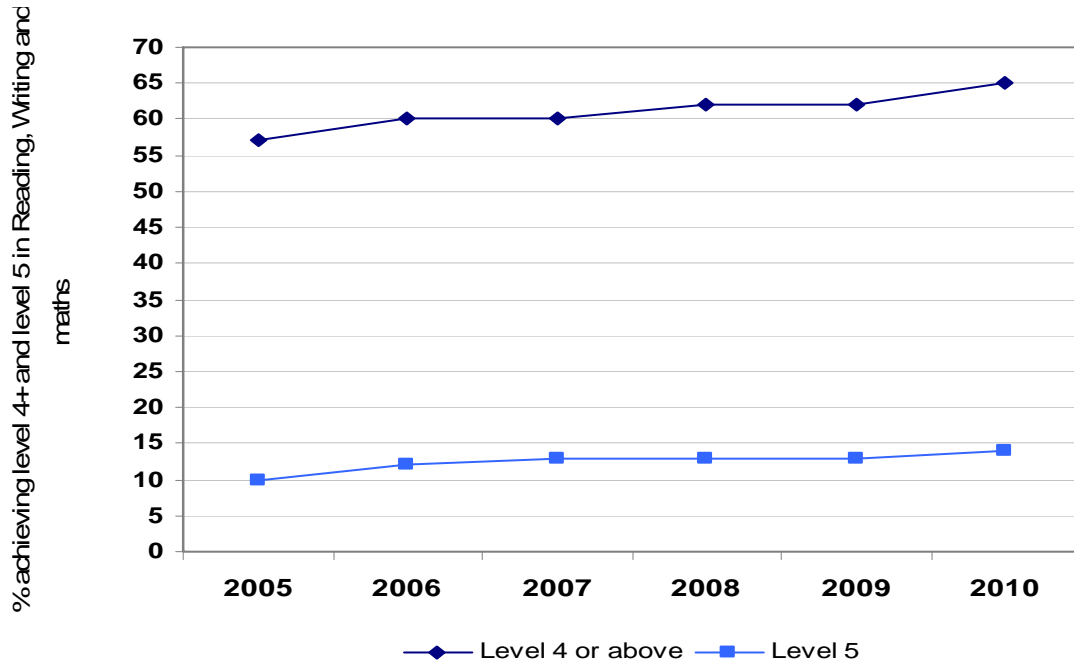


Chart 4b: Percentages of pupils achieving Level 4 or above and Level 5 in Reading, Writing and mathematics, 2005-2010



National tables

Table 1	Key Stage 2 test levels of attainment by subject, 1995-2010
Table 2	Percentage of pupils achieving Level 4 or above and Level 5 in Key Stage 2 tests and teacher assessments by gender, 2007-2010
Table 3	National Key Stage 2 test and teacher assessment levels of attainment by subject and gender, 2010
Table 4a	Percentage of pupils achieving Level 4 or above and Level 5 in combinations of subjects in Key Stage 2 tests, by gender
Table 4b	Percentage of pupils achieving Level 4 or above and Level 5 or above in combinations of subjects in Key Stage 2 tests
Table 5	National Key Stage 3 teacher assessment levels of attainment by subject and gender, 2010

Local Authority (LA) and Government Office Region (GOR) tables

These tables have been included to show the local authority level figures that underpin the national information; and to show LAs the aggregate picture for their authority as at 26th July 2010.

Table 6	Percentage of pupils achieving Level 4 or above in Key Stage 2 tests by Local Authority (LA), Government Office Region (GOR) and gender, 2010
Table 7	Percentage of pupils achieving Level 5 in Key Stage 2 tests by Local Authority (LA), Government Office Region (GOR) and gender, 2010
Table 8	Percentage of pupils achieving Level 4 or above in Key Stage 2 teacher assessment by Local Authority (LA), Government Office Region (GOR) and gender, 2010
Table 9	Percentage of pupils achieving Level 5 in Key Stage 2 teacher assessments by Local Authority (LA), Government Office Region (GOR) and gender, 2010
Table 10	Key Stage 2 Average Point Score by Local Authority (LA) and Government Office Region (GOR) and gender, 2010
Table 11	Percentage of pupils achieving Level 4 or above in both English and mathematics in Key Stage 2 tests by Local Authority (LA), Government Office Region (GOR) and gender, 2006-2010
Table 12	Percentage of pupils achieving Level 5 or above in the Key Stage 3 teacher assessments by Local Authority and Government Office Region and gender, 2010, England.
Table 13	Percentage of pupils achieving Level 6 or above in the Key Stage 3 teacher assessments by Local Authority and Government Office Region and gender, 2010, England.

All tables are available on the Department for Education statistics website:

<http://www.dcsf.gov.uk/rsgateway/DB/SFR/s000949/index.shtml>

NOTES TO EDITORS

The statistics in this release are based on the outcome of the National Curriculum tests carried out in May 2010 (for KS2 English and mathematics only) and Teacher Assessments (for KS2 & 3) for the 2009/2010 academic year. Tests and teacher assessments provide complementary information about pupils' attainment. The tests are designed to show what pupils have achieved in selected parts of a subject at the end of each Key Stage. Teacher assessment (TA) is the teachers' judgement of pupils' performance in the whole subject over the whole academic year.

How the assessments are made

Pupils' attainment is assessed in relation to the National Curriculum programmes of study, and pupils are awarded levels on the National Curriculum scale to reflect their attainment.

When the tests are marked, there are no quotas set for each of the National Curriculum levels, or underlying assumptions about the proportion of pupils who should be at any particular level. Proportions are decided entirely by how pupils' attainments measure up to the standards of the National Curriculum. The Key Stage 2 tests are marked externally by an agency contracted by the Qualifications and Curriculum Development Agency (QCDA). A review procedure is available for schools which have concerns over the marking of scripts.

At present, all pupils who are moving on to the next Key Stage programme of study in the next school year are regarded as being in the final year of their current Key Stage. All pupils in their final year of a Key Stage must be assessed. Pupils may complete the programme of study for a Key Stage before year group 6 or year group 9 in these cases the trigger for reporting is that point and not the end of year 6 or year 9. Most of the pupils will be in the year group with similarly aged pupils, for example, most 11 year olds will be in year group 6 and at the end of Key Stage 2. Some pupils, however, may be older or younger because they are not being taught with their chronological year group.

The Qualifications and Curriculum Development Agency (QCDA) have responsibility for ensuring that standards in the tests remain consistent from year to year. Two forms of evidence are used in the process: statistical evidence is drawn from the pre-test; and judgemental evidence is provided by the most senior markers on how pupils performed in the test compared to pupil performance on previous tests. National data is available at the level setting meeting to demonstrate the impact of the decisions made but is not used as the basis for decision making. The level setting process is observed by representatives from the teacher associations and unions and has not been subject to any political interference.

Changes to the National Curriculum Assessment Administrative Arrangements

National Curriculum tests in Science for all pupils were discontinued after the 2009 academic year. From 2010, Key Stage 2 science at school level has been assessed by teacher assessment only, which takes account of pupils' practical grasp of the subject and is based on their attainment throughout the academic year across the full programme of study. In order to monitor national standards in science, a new externally marked, sample test has been introduced. The Qualifications and Curriculum Development Agency (QCDA) administered the test on 14 May 2010 in selected schools. The proportion of students attaining level 4 or above and level 5 in this sample test will be reported in a Statistical Release to be published on 10 August 2010. More information on science sampling is available on the QCDA website: <http://www.qcda.gov.uk/sciencesampling> .

From 2009 schools were no longer required to submit teacher assessment data for Key Stage 3 non-core subjects to the Qualifications and Curriculum Development Agency; therefore these results are no longer reported. The duty on schools to make teacher assessments in the non-core subjects and report them to parents, carers or guardians remains.

Pupil performance – the number and proportion of pupils achieving at least the expected level - can be affected by a number of factors which mean that small year on year changes should not necessarily be considered to be significant, particularly at Local Authority level. Since National Curriculum tests were introduced over a decade ago, there have been a number of changes to the process by which the tests are run and marked.

Comparisons with years up to and including 2007 are likely to be affected by various administrative changes to the 2008 National Curriculum tests, which include the removal of borderlining, as announced in May 2008. The removal of borderlining is the change which is likely to have the biggest impact on the national results profile. A document listing the changes over the last decade to the testing process and an assessment of the impact of those changes can be found on the Departmental website: <http://www.dcsf.gov.uk/rsgateway/AssessmentAndMarkingProcessChanges1.0.pdf>

TECHNICAL INFORMATION

Source of data

The figures published in this Statistical First Release (SFR) are produced from data provided to the Department by the QCDA's data collection agency on 26th July 2010. The KS2 test and teacher assessment figures in this SFR are based on provisional 2010 data. The test figures will be subsequently updated with: the outcome of the appeals process where schools ask for reviews for one or more of their pupils in the belief that the mark scheme has not been correctly applied; changes that result from the checking exercise for the 2010 Primary Achievement and Attainment Tables. The effect of these amendments on the national results has previously been of the order of plus or minus one percentage point. Schools may also make revisions to their teacher assessments prior to publication. The figures published in this provisional SFR cover the results of all Key Stage 2 tests taken or teacher assessments made in 2010 and are not calculated on a cumulative basis (i.e. including test or TA results from previous years), as is the method used in the revised SFR and published within the Achievement and Attainment tables.

Coverage information

The figures reported in this release for National Curriculum tests are based upon those papers that were returned by schools for marking to the QCDA's contracted external marking agency. These results cover 73% of the papers expected to be externally marked for pupils in maintained schools, reflecting 4,005 maintained schools that were expected to participate in the Key Stage 2 tests but did not. This represents approximately 26% of the 15,518 maintained schools who were expected to administer the tests. Tables 6 and 7 provide the distribution of schools that did not participate in the tests at Local Authority and Government Office Region (these tables do not include Pupil Referral Units or Hospital Schools 107 of which are included in the figure of 15,518 above). The Department's Head of Profession for Statistics has determined that a sufficient volume of results is available to give a representative estimate of achievement nationally, but has advised that caution needs to be exercised in over-interpreting small changes of 1 per cent or less in changes between years and between groups. Local figures are accompanied by a coverage indicator and where results are not representative figures have been suppressed.

This year 203 schools in ten LAs took part in a pilot of Single Level Tests in mathematics (taken in mid-June). These schools did not take National Curriculum Tests in mathematics. The results of Single Level Tests will not be available until later in August and so are not included in this release. It is intended that they will be included in the SFR released alongside the Primary School Achievement and Attainment Tables for 2010.

National teacher assessment figures cover all schools in England with pupils eligible for assessment at Key Stage 2 and 3 in 2010 but, as participation by independent schools is voluntary, the national analyses only include results from those independent schools which chose to make a return and which met the statutory standards for assessment and moderation. The Key Stage 2 teacher assessment data is available for approximately 99.0% of eligible pupils, with Key Stage 3 data covering approximately 97.2% of eligible pupils.

National test figures cover all schools in England with pupils eligible for assessment at Key Stage 2 in 2010, but, as participation by independent schools is voluntary, the national analyses only include results from those independent schools which chose to make a return.

For the calculations showing the percentage of pupils achieving a particular level, the denominator for national results is the number of pupils who are eligible for KS2 tests or teacher assessments. This denominator includes pupils who were working below the level of the test (B – test only), unable to access the test (T – test only), took the test but failed to register a level (N – test only), were disapplied from the National Curriculum (D – TA only), or were absent (A). Pupils with missing results, or results coded as maladministration, are not included.

Local Authority (LA) figures cover maintained mainstream and maintained special schools only, including Academies and City Technology Colleges (CTCs) and excluding maintained hospital schools and pupil referral units. Two different calculations of the national results are presented in the

supplementary tables: one which is consistent with the national results in the main body of the SFR based on all schools (i.e. all maintained and independent schools for which assessment results are available); and the second for maintained schools only (excluding maintained hospital schools and pupil referral units), consistent with the results for each LA.

In the Primary School Achievement and Attainment Tables (expected to be published in December 2010), LA denominators will include pupils whose results are missing or coded as maladministration. The SFR released with the Tables (based on revised data) will therefore include missing and maladministration pupils in the LA denominators. However, in this provisional SFR, the denominators used to calculate percentages at LA level include the same results as at national level. Therefore pupils with missing results, or results coded as maladministration, are not included in the calculations. This is done so that LAs – where data is missing that could be corrected either through the review process or via the Tables checking exercise – are not disadvantaged.

In determining whether to publish both national and local authority level figures our decisions have considered both the volume of results that are available and whether they are representative based on the following characteristics:

- School type;
- Gender;
- Proportion of pupils within a school eligible for Free School Meals.

The same considerations have been applied to local authority mathematics figures where results of Single Level Tests are pending. This applies to ten local authorities; Westminster, Bexley, Solihull, Liverpool, Calderdale, South Tyneside, East Sussex, Leicestershire, Essex and Gloucestershire.

Allocation of points for each test level at Key Stage 2

The following table sets out how points have been allocated to each KS2 test level to calculate the KS2 Average Point Score (Table 10). The Average Points Score relates aggregate number of points to the number of eligible pupils.

National Curriculum test level	Point score equivalent
Missing (M or blank)	Disregarded
Lost scripts (X)	Disregarded
Not eligible for the tests (Y or Z)	Disregarded
Unable to access the tests (T)	Disregarded
Absent (A)	Disregarded
Maladministration (Q)	Disregarded
Pupil will take the test in the future (F)	Disregarded
Pupil took the test in the past (P)	Disregarded
B – Working below the level of the test	15
N – Not awarded a test level	15
2	15
3	21
4	27
5	33

Rounding

Any percentages given in this SFR are given to the nearest whole number. The rounding convention is as follows: any fractions of 0.5 and above will be rounded up, anything less than 0.5 will be rounded down, e.g. 85.586 will be rounded to 86; 85.4283 will be rounded to 85.

Key to tables

The following symbol notation is used in the tables published in this release:

- . not applicable
- .. not available
- # not available due to lack of sufficiently representative data

A National Statistics publication

National Statistics are produced to high professional standards set out in the Code of Practice for Official Statistics. They undergo regular quality assurance reviews to ensure they meet customer needs. They are produced free from any political interference.

Compliance with statistical policies

The Department has a set of statistical policies in line with the Code of Practice for Official Statistics, these are published here: <http://www.dcsf.gov.uk/rsgateway/nat-stats.shtml> . The Key Stage 2 data in this release will be updated as a part of the normal annual cycle with revised figures expected to be published in December 2010 and final in summer 2011. Key Stage 3 teacher assessment figures are intended to be updated to final in summer 2011.

Related publications

SFR24/2010: Key Stage 2 Attainment of Pupils in Science in England, 2009/10

<http://www.dcsf.gov.uk/rsgateway/DB/SFR/s000948/index.shtml>

This publication is scheduled to be released at 9.30 am on Tuesday 10 August 2010

SFR26/2010: National Curriculum Assessments at Key Stage 1 in England, 2010

<http://www.dcsf.gov.uk/rsgateway/DB/SFR/s000947/index.shtml>

This publication is scheduled to be released at 9.30 am on Thursday 26 August 2010

SFR32/2009: National Curriculum Assessments at Key Stage 2 in England 2008/09 (Revised)

<http://www.dcsf.gov.uk/rsgateway/DB/SFR/s000893/index.shtml>

This publication was released at 9.30 am on Tuesday 1 December 2009

SFR27/2009: National Curriculum Assessments: Teacher Assessments at Key Stage 2 and 3 in England, 2009

<http://www.dcsf.gov.uk/rsgateway/DB/SFR/s000883/index.shtml>

This publication was released at 9.30 am on Tuesday 27 October 2009

SFR21/2009: National Curriculum Assessments at Key Stage 1 in England, 2009

<http://www.dcsf.gov.uk/rsgateway/DB/SFR/s000867/index.shtml>

This publication was released at 9.30 am on Tuesday 25 August 2009

ENQUIRIES

Enquiries about the figures contained in this release should be addressed to:

Adam Hatton
3rd Floor - DSG
Department for Education,
Sanctuary Buildings,
Great Smith Street,
London
SW1P 3BT
Telephone: 0870 000 2288
Email: Attainment.STATISTICS@education.gsi.gov.uk

Press enquiries should be made to the Department's Press Office at:

Press Office
Department for Education,
Sanctuary Buildings,
Great Smith Street,
London,
SW1P 3BT
Telephone: 020 7925 6789

Table 1: Key Stage 2 test levels of attainment by subject
Years: 1995-2010¹
Coverage: England, All schools²

Percentage of pupils at each Level													
	A	T	B	N	2	3	4	5	6 ³	Total ⁴	% at Level 4 or above	% at Level 5	Total number of eligible pupils (Thousands)
English													
1995 ⁵	4	0	.	0	7	39	41	7	0	100	49	7	500.6
1996	3	0	.	2	6	30	45	12	0	100	57	12	584.2
1997	3	0	4	2	1	26	48	16	0	100	63	16	589.1
1998	2	0	4	2	1	26	48	17	0	100	65	17	608.1
1999	2	0	3	2	1	20	48	22	0	100	71	22	628.8
2000	2	0	3	2	1	17	46	29	0	100	75	29	623.4
2001	1	1	3	2	1	17	46	29	0	100	75	29	633.5
2002	1	1	3	2	1	17	46	29	0	100	75	29	641.3
2003	1	1	3	2	1	16	48	27	.	100	75	27	637.1
2004	1	0	4	2	1	14	50	27	.	100	78	27	612.3
2005	1	0	4	2	1	14	52	27	.	100	79	27	609.6
2006	1	0	4	1	1	14	47	32	.	100	79	32	594.1
2007	1	0	4	1	1	13	47	34	.	100	80	34	586.8
2008	1	0	4	1	1	13	51	30	.	100	81	30	596.0
2009	1	0	4	1	1	14	51	29	.	100	80	29	579.5
2010 ⁶	1	0	4	1	1	13	48	33	.	100	81	33	417.5
Mathematics													
1995 ⁵	4	0	.	5	7	37	31	12	0	100	45	13	465.3
1996	3	0	.	2	5	34	40	14	0	100	54	14	584.4
1997	3	0	3	2	2	28	44	18	0	100	62	18	589.4
1998	2	0	3	3	1	31	42	17	0	100	59	17	608.3
1999	2	0	3	2	1	23	45	24	0	100	69	24	629.0
2000	2	0	3	2	1	21	47	24	0	100	72	25	623.7
2001	1	0	2	2	1	22	45	25	0	100	71	25	633.5
2002	1	1	2	2	1	20	46	27	0	100	73	28	640.8
2003	1	1	3	2	1	19	44	29	.	100	73	29	637.2
2004	1	0	3	2	1	19	43	31	.	100	74	31	612.7
2005	1	0	3	2	1	18	44	31	.	100	75	31	609.9
2006	1	0	3	2	1	17	43	33	.	100	76	33	594.2
2007	1	0	3	2	1	16	45	32	.	100	77	32	587.2
2008	1	0	3	1	1	15	47	31	.	100	79	31	596.5
2009	1	0	3	1	1	15	44	35	.	100	79	35	579.6
2010 ⁶	1	0	3	1	1	14	46	35	0	100	80	35	411.6

A represents pupils who were absent.

T represents pupils working at the level of the assessment but unable to access the test.

B represents pupils who were working below the level of the test

N represents pupils who took the tests but failed to register a Level.

- Figures for 2010 are based on provisional data. Figures for all other years are based on final data.
- The England all schools figures includes those independent schools who chose to take part in the tests.
- Level 6 was a possible outcome from 1995 - 2002 only, some pupils may attain level 6 in mathematics Single Level Tests in 2010. These results not yet available.
- Figures may not sum due to rounding. Levels W and 1 are no longer reported for tests.
- Maintained school participation rate in 1995 was 91%
- Approximately 574.6 thousand pupils (of which approximately 564.8 thousand in maintained schools) could have been eligible for the 2010 tests. The maintained school participation rate in 2010 is 74%

Table 2: Percentages of pupils achieving Level 4 or above and Level 5 in Key Stage 2 tests and teacher assessments by gender

Years: 2007-2010¹

Coverage: England, All schools²

Percentage of pupils at Level 4 or above (Tests)					Percentage of pupils at Level 4 or above (Teacher assessment)		
	English	Reading	Writing	Mathematics	English	Mathematics	Science
Boys							
2007	76	81	60	78	73	78	84
2008	77	83	61	79	74	79	84
2009	75	82	61	79	75	80	85
2010	76	81	64	80	76	81	84
Girls							
2007	85	87	75	76	83	78	85
2008	86	90	75	78	84	79	86
2009	85	89	75	78	84	80	87
2010	85	87	79	80	86	82	86
All pupils							
2007	80	84	67	77	78	78	85
2008	81	87	68	79	79	79	85
2009	80	86	68	79	79	80	86
2010	81	84	71	80	81	81	85
Percentage of pupils at Level 5 (Test)					Percentage of pupils at Level 5 or above (Teacher assessment)		
	English	Reading	Writing	Mathematics	English	Mathematics	Science
Boys							
2007	28	44	15	35	24	35	38
2008	23	43	15	35	24	35	38
2009	23	41	15	37	25	36	38
2010	26	46	15	37	26	37	37
Girls							
2007	39	52	24	30	35	30	38
2008	36	55	25	28	35	30	38
2009	36	54	24	32	36	31	38
2010	40	56	26	32	39	33	36
All pupils							
2007	34	48	19	32	29	33	38
2008	30	49	20	31	30	33	38
2009	29	47	20	35	30	34	38
2010	33	51	21	35	32	35	37

1. Figures for 2010 are based on provisional data. Figures for all other years are based on final data.

2. The England all schools figures includes those independent schools who chose to take part in the tests and return teacher assessment data.

Table 3: National Key Stage 2 test and teacher assessment levels of attainment by subject and gender
Year: 2010 (Provisional)
Coverage: England, All schools¹

Percentage at each Level														% at Level 2 or below	% at Level 4 or above	% at Level 5 or above
	A	T	B	N	D	W	1	2 ²	3	4	5	6	Total			
Boys																
English Test	1	0	5	1	.	.	.	1	16	50	26	.	100	7	76	26
Reading Test	1	0	5	4	9	35	46	.	100	10	81	46
Writing Test	1	0	5	2	29	49	15	.	100	7	64	15
Mathematics Test	1	0	4	1	.	.	.	1	13	44	37	0	100	6	80	37
English TA	0	.	.	.	0	1	1	5	17	50	26	0	100	6	76	26
Mathematics TA	0	.	.	.	0	1	1	3	14	44	37	0	100	5	81	37
Science TA	0	.	.	.	0	1	1	2	12	47	37	0	100	3	84	37
Girls																
English Test	1	0	3	1	.	.	.	1	10	46	40	.	100	4	85	40
Reading Test	1	0	3	3	6	31	56	.	100	6	87	56
Writing Test	1	0	3	1	18	52	26	.	100	3	79	26
Mathematics Test	1	0	3	1	.	.	.	1	15	48	32	0	100	4	80	32
English TA	0	.	.	.	0	0	1	2	11	47	39	0	100	3	86	39
Mathematics TA	0	.	.	.	0	0	1	3	14	49	33	0	100	4	82	33
Science TA	0	.	.	.	0	0	0	2	11	50	36	0	100	2	86	36
All pupils																
English Test	1	0	4	1	.	.	.	1	13	48	33	.	100	6	81	33
Reading Test	1	0	4	4	8	33	51	.	100	8	84	51
Writing Test	1	0	4	1	23	50	21	.	100	5	71	21
Mathematics Test	1	0	3	1	.	.	.	1	14	46	35	0	100	5	80	35
English TA	0	.	.	.	0	1	1	3	14	49	32	0	100	5	81	32
Mathematics TA	0	.	.	.	0	0	1	3	14	46	35	0	100	4	81	35
Science TA	0	.	.	.	0	1	0	2	12	49	36	0	100	3	85	37

Number at each level (thousands)

Number at each level (thousands)														% at Level 2 or below	% at Level 4 or above	% at Level 5 or above
	A	T	B	N	D	W	1	2 ²	3	4	5	6	Total			
Boys																
English Test	1.8	0.1	10.9	3.0	.	.	.	2.0	33.3	106.3	55.2	.	212.7	15.9	161.6	55.2
Reading Test	1.4	0.1	10.9	9.5	18.4	75.3	97.1	.	212.7	20.4	172.3	97.1
Writing Test	1.3	0.1	10.9	3.6	61.4	103.6	31.7	.	212.7	14.6	135.3	31.7
Mathematics Test	1.4	0.1	8.6	2.2	.	.	.	1.2	27.5	91.6	77.0	0.0	209.6	12.1	168.5	77.0
English TA	0.1	.	.	.	0.2	1.9	3.0	13.1	50.1	145.0	76.4	0.1	290.0	18.0	221.5	76.5
Mathematics TA	0.1	.	.	.	0.2	1.6	2.3	10.1	40.0	127.6	106.8	1.4	290.1	14.1	235.7	108.1
Science TA	0.2	.	.	.	0.2	2.0	1.6	6.4	35.8	137.4	106.0	0.1	289.8	10.1	243.5	106.1
Girls																
English Test	1.4	0.1	5.3	1.4	.	.	.	1.0	20.9	93.3	81.3	.	204.6	7.7	174.5	81.3
Reading Test	1.1	0.1	5.3	6.4	13.2	64.0	114.6	.	204.6	11.6	178.6	114.6
Writing Test	1.1	0.1	5.3	1.2	35.9	107.1	54.1	.	204.6	6.4	161.2	54.1
Mathematics Test	1.1	0.1	5.3	2.4	.	.	.	1.3	29.9	96.4	65.4	0.0	201.8	8.9	161.7	65.4
English TA	0.1	.	.	.	0.1	1.1	1.4	6.4	30.7	130.5	107.5	0.2	277.9	8.8	238.2	107.7
Mathematics TA	0.1	.	.	.	0.1	1.0	1.4	7.9	40.3	135.8	90.7	0.7	278.0	10.3	227.2	91.4
Science TA	0.1	.	.	.	0.1	1.2	1.0	4.5	30.7	138.6	101.0	0.1	277.3	6.7	239.7	101.1
All pupils																
English Test	3.2	0.2	16.2	4.4	.	.	.	3.0	54.2	199.7	136.6	.	417.5	23.6	336.2	136.6
Reading Test	2.4	0.2	16.2	15.9	31.7	139.4	211.7	.	417.5	32.1	351.1	211.7
Writing Test	2.4	0.2	16.2	4.8	97.3	210.7	85.8	.	417.5	21.0	296.6	85.8
Mathematics Test	2.6	0.2	13.9	4.6	.	.	.	2.5	57.4	188.0	142.4	0.0	411.6	21.0	330.4	142.4
English TA	0.2	.	.	.	0.3	3.0	4.4	19.5	80.8	275.5	183.9	0.4	568.0	26.9	459.8	184.3
Mathematics TA	0.2	.	.	.	0.3	2.6	3.7	18.0	80.4	263.5	197.5	2.1	568.3	24.3	463.0	199.6
Science TA	0.3	.	.	.	0.3	3.2	2.7	10.9	66.6	276.1	207.0	0.2	567.3	16.7	483.3	207.2

A represents pupils who were absent.

T represents pupils working at the level of the assessment but unable to access the test.

B represents pupils who were working below the level of the test.

N represents pupils who took the tests but failed to register a Level.

W represents pupils who were working towards a teacher assessment Level but have not yet achieved the standards needed for Level 1.

D, W, 1 not applicable outcomes for tests

T, B, N not applicable outcomes for teacher assessments

1. The figures in this table include those independent schools who chose to take part in tests/TA.

Table 4a: Percentage of pupils achieving Level 4 or above and Level 5 in combinations of subjects in Key Stage 2 tests, by gender

Year: 2010 (Provisional)

Coverage: England, All schools ¹

	Percentage achieving Level 4 or above			Percentage achieving Level 5		
	Boys	Girls	All	Boys	Girls	All
English and mathematics	71	77	74	20	25	23
At least one of English or mathematics	85	89	87	42	47	44
Reading and writing	62	76	69	14	24	19
Reading, writing and mathematics	59	70	65	11	17	14

Table 4b: Percentage of pupils achieving Level 4 or above and Level 5 or above in combinations of subjects in Key Stage 2 tests
Years: 2005 - 2010¹
Coverage: England, All schools²

Percentage of pupils achieving Level 4 or above in:

	2005	2006	2007	2008	2009	2010
English and mathematics	69	70	71	73	72	74
At least one of English or mathematics	87	87
Reading and writing	..	65	66	67	67	69
Reading, writing and mathematics	57	60	60	62	62	65

Percentage of pupils achieving Level 5 in:

	2005	2006	2007	2008	2009	2010
English and mathematics	18	22	22	20	20	23
At least one of English or mathematics	44	44
Reading and writing	..	17	18	18	18	19
Reading, writing and mathematics	10	12	13	13	13	14

1. Figures for 2010 are based on provisional data. Figures for all other years are based on final data.

2. The England all schools figures includes those independent schools who chose to participate in the tests.

3. As whole cohort science tests are no longer statutory the previous combination of at least one of English or mathematics or science can no longer be calculated. This has been replaced by a similar measure, but including at least one of English or mathematics only. For comparison purposes we have also calculated this measure based on 2009 final data.

Table 5: National Key Stage 3 teacher assessment levels of attainment by subject and gender
Year: 2010 (Provisional)
Coverage: England, All schools¹

Percentage at each Level																	
	A	D	W	1	2	3	4	5	6	7	8	E	Total	% at Level 3 or below	% at Level 5 or above	% at Level 6 or above	% at Level 7 or above
Boys																	
English TA	1	0	0	1	1	5	18	38	27	7	0	0	100	8	73	35	8
Mathematics TA	1	0	0	0	1	5	12	21	27	22	9	0	100	7	79	58	31
Science TA	1	0	0	0	1	4	15	31	30	16	1	0	100	6	79	47	17
Girls																	
English TA	1	0	0	0	1	2	10	34	37	14	1	0	100	3	86	52	15
Mathematics TA	1	0	0	0	1	5	12	23	29	22	7	0	100	6	81	58	29
Science TA	1	0	0	0	0	3	14	33	32	16	1	0	100	4	82	49	17
All Pupils																	
English TA	1	0	0	0	1	4	15	36	32	11	1	0	100	6	79	43	11
Mathematics TA	1	0	0	0	1	5	12	22	28	22	8	0	100	7	80	58	30
Science TA	1	0	0	0	1	4	14	32	31	16	1	0	100	5	80	48	17
Number at each Level (Thousands)																	
	A	D	W	1	2	3	4	5	6	7	8	E	Total	Number at Level 3 or below	Number at Level 5 or above	Number at Level 6 or above	Number at Level 7 or above
Boys																	
English TA	2.3	0.2	1.3	1.7	4.2	15.3	54.1	111.6	79.5	21.8	1.4	0.1	293.5	22.5	214.3	102.7	23.2
Mathematics TA	2.0	0.2	1.2	1.2	3.8	15.8	36.4	62.0	79.5	65.3	26.3	0.3	294.1	21.9	233.5	171.5	91.9
Science TA	2.3	0.2	1.3	0.8	2.5	12.0	43.8	92.8	89.8	47.0	2.6	0.2	295.3	16.6	232.4	139.6	49.8
Girls																	
English TA	1.7	0.1	0.8	0.8	1.7	6.0	29.0	94.7	102.1	38.8	2.4	0.1	278.3	9.3	238.1	143.4	41.3
Mathematics TA	1.6	0.1	0.8	0.7	2.6	13.3	34.3	63.8	80.8	61.0	19.9	0.2	279.0	17.3	225.7	161.9	81.1
Science TA	1.8	0.1	0.8	0.4	1.4	8.4	38.1	91.2	90.7	44.9	2.0	0.1	280.1	11.1	229.0	137.8	47.1
All Pupils																	
English TA	4.0	0.4	2.2	2.5	5.8	21.3	83.1	206.3	181.6	60.6	3.8	0.2	571.8	31.9	452.5	246.2	64.5
Mathematics TA	3.6	0.3	2.0	1.9	6.3	29.1	70.7	125.9	160.3	126.3	46.2	0.5	573.1	39.3	459.2	333.3	173.0
Science TA	4.0	0.3	2.2	1.2	3.9	20.4	81.9	184.0	180.5	91.9	4.6	0.4	575.3	27.6	461.4	277.4	96.9

A represents pupils who were absent.

D represents pupils disapplied from teacher assessment.

W represents pupils who are "working towards" Level 1 but have not yet achieved the standards needed for Level 1.

E represents exceptional performance.

1. The figures in this table include those independent schools who chose to return teacher assessment data.

Norfolk	4.3	4.1	8.4	72	82	77	79	78	78	81	83	82
Peterborough	1.2	1.0	2.2	72	77	74	80	75	77	78	76	77
Southend-on-Sea	1.0	0.9	1.9	74	84	79	77	80	79	83	87	85
Suffolk	3.8	3.7	7.5	71	84	78	78	78	78	82	86	84
Thurrock	1.0	0.9	1.9	67	81	74	75	75	75	74	80	77
LONDON	40.7	39.1	79.8	76	85	80	81	82	81	82	85	84
Inner London	14.2	13.6	27.8	74	84	79	80	81	80	81	85	83
Camden	0.7	0.7	1.4	76	85	80	80	81	81	85	88	86
Hackney	1.1	1.1	2.1	71	81	76	76	77	77	75	77	76
Hammersmith and Fulham	0.6	0.6	1.2	72	83	77	78	80	79	78	84	81
Haringey	1.4	1.3	2.6	71	80	75	77	77	77	77	79	78
Islington	0.9	0.8	1.7	73	83	78	79	79	79	82	85	84
Kensington and Chelsea	0.4	0.4	0.9	77	87	82	86	84	85	88	90	89
Lambeth	1.2	1.2	2.5	76	85	81	81	82	81	81	85	83
Lewisham	1.4	1.3	2.7	76	83	80	81	81	81	84	87	85
London, City of	0.0	0.0	0.0	x	x	x	100	100	100	100	x	x
Newham	1.9	1.9	3.8	73	83	78	80	81	81	79	84	82
Southwark	1.4	1.3	2.7	72	84	78	78	81	79	82	86	84
Tower Hamlets	1.4	1.3	2.7	79	86	82	82	82	82	85	87	86
Wandsworth	1.1	1.1	2.2	77	85	81	83	83	83	84	87	86
Westminster	0.7	0.7	1.4	72	83	78	76	80	78	77	82	79
Outer London	26.5	25.5	52.0	77	85	81	82	82	82	83	86	84
Barking and Dagenham	1.2	1.2	2.3	72	83	77	77	80	79	78	84	81
Barnet	1.7	1.7	3.4	79	85	82	84	82	83	85	86	86
Bexley	1.5	1.4	2.9	82	89	85	83	84	83	87	90	89
Brent	1.5	1.4	3.0	73	82	77	79	80	80	81	83	82
Bromley	1.7	1.6	3.3	79	89	84	82	85	83	85	90	88
Croydon	1.9	1.9	3.8	76	86	81	81	82	82	82	86	84
Ealing	1.8	1.6	3.4	74	80	77	79	78	78	78	79	78
Enfield	1.8	1.8	3.6	74	81	77	81	81	81	82	84	83
Greenwich	1.3	1.3	2.6	79	86	82	84	84	84	86	88	87
Harrow	1.2	1.2	2.4	77	84	80	81	80	81	80	84	82
Havering	1.4	1.3	2.8	81	89	85	84	85	84	85	88	86
Hillingdon	1.6	1.6	3.2	77	85	81	82	81	81	83	86	84
Hounslow	1.3	1.2	2.4	78	83	81	83	81	82	85	86	86
Kingston upon Thames	0.7	0.8	1.5	81	91	86	86	89	87	88	92	90
Merton	0.9	0.9	1.8	78	84	81	83	80	82	84	84	84
Redbridge	1.6	1.6	3.2	77	86	81	82	83	82	81	86	83
Richmond upon Thames	0.9	0.9	1.8	87	92	89	90	86	88	91	92	91
Sutton	1.0	0.9	1.9	79	87	83	87	84	85	87	88	87
Waltham Forest	1.4	1.3	2.7	74	82	78	81	81	81	77	81	79
SOUTH EAST	45.6	43.2	88.8	77	86	81	81	81	81	85	86	85
Bracknell Forest	0.6	0.5	1.1	73	86	79	82	80	81	86	88	87
Brighton and Hove	1.2	1.2	2.3	80	87	84	84	84	84	87	88	87
Buckinghamshire	2.9	2.6	5.5	81	90	85	85	87	86	88	91	89
East Sussex	2.7	2.6	5.3	76	84	80	80	78	79	84	83	83
Hampshire	7.3	6.8	14.1	79	88	83	83	84	84	87	88	87
Isle of Wight	0.7	0.7	1.4	66	80	73	76	74	75	84	85	84
Kent	8.0	7.6	15.6	75	85	80	80	79	79	83	84	84
Medway	1.6	1.6	3.2	71	81	76	76	77	77	79	82	81
Milton Keynes	1.5	1.5	3.0	76	85	80	81	81	81	84	86	85
Oxfordshire	3.3	3.1	6.4	74	86	80	79	80	80	83	86	84
Portsmouth	0.9	0.9	1.9	67	82	74	80	78	79	80	80	80
Reading	0.7	0.7	1.4	73	82	77	80	80	80	80	84	82
Slough	0.8	0.7	1.5	70	80	75	78	80	79	78	80	79
Southampton	1.1	1.1	2.2	72	79	75	77	75	76	80	82	81
Surrey	5.6	5.4	11.0	79	88	83	83	82	82	87	88	88
West Berkshire	0.9	0.8	1.7	79	86	82	82	81	82	85	87	86
West Sussex	4.1	3.9	8.0	78	87	82	83	82	82	86	86	86
Windsor and Maidenhead	0.7	0.7	1.4	86	89	87	85	81	83	93	92	93
Wokingham	1.0	0.9	1.8	83	91	87	86	86	86	89	90	90
SOUTH WEST	27.4	26.3	53.7	77	87	82	82	82	82	85	87	86
Bath and North East Somerset	0.9	0.8	1.7	82	90	85	86	86	86	88	90	89
Bournemouth	0.8	0.7	1.5	76	85	80	80	79	79	84	86	85
Bristol, City of	1.9	1.9	3.7	74	83	78	79	79	79	80	82	81
Cornwall	2.9	2.7	5.6	76	87	81	80	81	80	85	87	86
Devon	3.9	3.7	7.6	79	88	83	84	82	83	88	89	88
Dorset	2.1	2.0	4.1	78	87	83	81	82	82	88	91	90
Gloucestershire	3.2	3.1	6.2	80	88	84	83	83	83	87	89	88
Isles of Scilly	0.0	0.0	0.0	100	x	x	100	79	86	100	100	100
North Somerset	1.1	1.1	2.2	77	87	82	80	81	81	85	87	86
Plymouth	1.3	1.3	2.6	70	83	76	78	78	78	79	83	81
Poole	0.6	0.7	1.3	74	88	81	80	82	81	83	88	85
Somerset	2.8	2.7	5.5	76	87	81	82	81	82	86	87	86
South Gloucestershire	1.6	1.5	3.1	79	89	84	83	84	83	87	90	88
Swindon	1.2	1.2	2.4	77	86	82	82	82	82	85	87	86
Torbay	0.7	0.7	1.4	75	84	79	80	79	80	80	80	80
Wiltshire	2.5	2.4	4.9	79	88	84	81	84	82	86	89	88
ENGLAND (Maintained schools only, including Academies and CTCs)	286.6	273.4	560.2	76	86	81	81	82	81	84	86	85
ENGLAND (All schools) ³	-	-	-	76	86	81	81	82	81	84	86	85

1. Figures for academies are included in the individual LA figures and also in the total for England Maintained schools, but figures exclude hospital schools and pupil referral units.

2. Number of eligible pupils with a valid result in at least one subject.

3. The figures in this table include those independent schools who chose to take part in Teacher assessments

4. In 2009 the local authorities of Cheshire and Bedfordshire were replaced by the four new unitary authorities of Bedford, Central Bedfordshire, Cheshire East, Cheshire West and Chester.

Norfolk	4.3	4.1	8.4	25	35	30	36	29	32	33	31	32
Peterborough	1.2	1.0	2.2	24	32	28	34	24	29	30	24	27
Southend-on-Sea	1.0	0.9	1.9	26	39	32	36	33	34	36	36	36
Suffolk	3.8	3.7	7.5	21	33	27	32	27	30	32	32	32
Thurrock	1.0	0.9	1.9	17	29	22	26	23	25	24	23	23
LONDON	40.7	39.1	79.8	26	37	32	38	34	36	36	36	36
Inner London	14.2	13.6	27.8	24	36	30	35	31	33	33	34	34
Camden	0.7	0.7	1.4	27	37	31	41	34	37	39	36	37
Hackney	1.1	1.1	2.1	21	30	26	29	24	27	24	22	23
Hammersmith and Fulham	0.6	0.6	1.2	25	33	29	33	23	28	29	26	27
Haringey	1.4	1.3	2.6	27	34	30	37	32	34	34	31	33
Islington	0.9	0.8	1.7	22	36	29	33	29	31	33	34	33
Kensington and Chelsea	0.4	0.4	0.9	35	49	42	45	44	44	40	48	44
Lambeth	1.2	1.2	2.5	25	36	30	35	32	34	32	36	34
Lewisham	1.4	1.3	2.7	27	39	32	36	32	34	38	38	38
London, City of	0.0	0.0	0.0	29	54	41	64	54	59	21	31	26
Newham	1.9	1.9	3.8	22	33	27	35	30	33	34	34	34
Southwark	1.4	1.3	2.7	21	36	29	30	32	31	31	37	34
Tower Hamlets	1.4	1.3	2.7	23	33	28	36	30	33	35	35	35
Wandsworth	1.1	1.1	2.2	29	41	35	37	32	35	37	37	37
Westminster	0.7	0.7	1.4	22	36	29	33	31	32	30	33	32
Outer London	26.5	25.5	52.0	27	38	32	40	36	38	37	37	37
Barking and Dagenham	1.2	1.2	2.3	20	31	26	31	30	30	30	31	31
Barnet	1.7	1.7	3.4	30	40	35	42	38	40	41	37	39
Bexley	1.5	1.4	2.9	26	42	34	42	38	40	38	41	39
Brent	1.5	1.4	3.0	23	31	27	38	32	35	35	34	34
Bromley	1.7	1.6	3.3	30	42	36	44	38	41	40	41	41
Croydon	1.9	1.9	3.8	26	41	33	37	35	36	33	35	34
Ealing	1.8	1.6	3.4	25	34	29	37	33	35	32	30	31
Enfield	1.8	1.8	3.6	27	35	31	39	34	37	35	36	35
Greenwich	1.3	1.3	2.6	24	37	30	37	35	36	36	38	37
Harrow	1.2	1.2	2.4	29	37	33	42	38	40	38	38	38
Havering	1.4	1.3	2.8	29	41	35	40	34	37	38	35	36
Hillingdon	1.6	1.6	3.2	24	35	30	40	32	36	36	32	34
Hounslow	1.3	1.2	2.4	25	38	31	37	32	35	37	38	37
Kingston upon Thames	0.7	0.8	1.5	33	47	40	46	45	46	43	48	48
Merton	0.9	0.9	1.8	30	36	33	42	33	37	39	32	36
Redbridge	1.6	1.6	3.2	26	41	33	41	38	40	37	39	38
Richmond upon Thames	0.9	0.9	1.8	45	55	50	56	49	52	53	54	53
Sutton	1.0	0.9	1.9	28	42	35	44	41	43	43	42	42
Waltham Forest	1.4	1.3	2.7	22	31	26	36	30	33	30	31	30
SOUTH EAST	45.6	43.2	88.8	27	40	33	38	33	36	37	37	37
Bracknell Forest	0.6	0.5	1.1	24	36	29	33	30	32	36	36	36
Brighton and Hove	1.2	1.2	2.3	34	46	40	42	38	40	41	42	42
Buckinghamshire	2.9	2.6	5.5	34	47	40	46	39	43	47	48	47
East Sussex	2.7	2.6	5.3	25	38	31	33	29	31	33	32	32
Hampshire	7.3	6.8	14.1	29	42	35	40	35	38	40	38	39
Isle of Wight	0.7	0.7	1.4	20	31	25	30	22	26	32	32	32
Kent	8.0	7.6	15.6	26	39	32	35	33	34	34	35	34
Medway	1.6	1.6	3.2	21	34	27	29	29	29	27	31	29
Milton Keynes	1.5	1.5	3.0	25	39	32	37	33	35	34	36	35
Oxfordshire	3.3	3.1	6.4	24	39	32	35	31	33	33	36	34
Portsmouth	0.9	0.9	1.9	19	32	26	34	29	31	29	30	29
Reading	0.7	0.7	1.4	24	34	29	38	31	35	32	32	32
Slough	0.8	0.7	1.5	24	37	30	37	34	35	32	31	32
Southampton	1.1	1.1	2.2	20	30	25	32	25	29	33	30	32
Surrey	5.6	5.4	11.0	30	42	36	41	36	39	41	41	41
West Berkshire	0.9	0.8	1.7	29	40	35	40	33	37	38	36	37
West Sussex	4.1	3.9	8.0	28	42	34	39	32	36	38	37	37
Windsor and Maidenhead	0.7	0.7	1.4	35	43	39	42	33	38	47	40	44
Wokingham	1.0	0.9	1.8	33	45	39	45	38	42	45	43	44
SOUTH WEST	27.4	26.3	53.7	27	40	34	37	33	35	38	37	37
Bath and North East Somerset	0.9	0.8	1.7	30	46	38	42	39	41	39	40	40
Bournemouth	0.8	0.7	1.5	25	38	31	39	33	36	39	38	38
Bristol, City of	1.9	1.9	3.7	28	37	33	38	30	34	35	33	34
Cornwall	2.9	2.7	5.6	26	42	34	33	33	33	34	37	36
Devon	3.9	3.7	7.6	28	42	35	39	34	36	40	37	39
Dorset	2.1	2.0	4.1	26	44	35	36	34	35	44	44	44
Gloucestershire	3.2	3.1	6.2	30	42	36	40	34	37	42	40	41
Isles of Scilly	0.0	0.0	0.0	43	29	33	x	21	38	x	57	67
North Somerset	1.1	1.1	2.2	29	41	35	36	31	34	38	35	37
Plymouth	1.3	1.3	2.6	18	29	23	29	27	28	26	25	26
Poole	0.6	0.7	1.3	24	40	32	39	40	39	40	43	42
Somerset	2.8	2.7	5.5	28	39	34	39	31	35	39	36	38
South Gloucestershire	1.6	1.5	3.1	28	40	34	39	33	36	40	37	38
Swindon	1.2	1.2	2.4	27	38	33	36	32	34	37	36	37
Torbay	0.7	0.7	1.4	21	31	25	34	29	31	25	24	24
Wiltshire	2.5	2.4	4.9	30	43	36	38	34	36	39	38	38
ENGLAND (Maintained schools only, including Academies and CTCs)	286.6	273.4	560.2	26	38	32	37	32	35	36	36	36
ENGLAND (All schools) ³	-	-	-	26	39	32	37	33	35	37	36	37

1. Figures for academies are included in the individual LA figures and also in the total for England Maintained schools, but figures exclude hospital schools and pupil referral units.

2. Number of eligible pupils with a valid result in at least one subject.

3. The figures in this table include those independent schools who chose to take part in Teacher Assessments

4. In 2009 the local authorities of Cheshire and Bedfordshire were replaced by the four new unitary authorities of Bedford, Central Bedfordshire, Cheshire East, Cheshire West and Chester.

Essex	8.2	7.8	16.0	76	89	82	80	84	82	80	84	82
Hertfordshire	7.0	6.8	13.8	81	91	86	85	87	86	83	86	84
Luton	1.3	1.2	2.4	72	81	76	75	77	76	73	75	74
Norfolk	4.5	4.3	8.8	69	83	76	80	81	81	78	81	80
Peterborough	1.1	1.1	2.3	63	76	70	73	71	72	71	71	71
Southend-on-Sea	1.1	1.1	2.2	76	87	81	79	81	80	78	82	80
Suffolk	4.3	4.0	8.3	73	86	80	82	81	81	83	85	84
Thurrock	1.0	0.9	2.0	68	82	75	75	78	76	74	78	76
LONDON	39.3	37.7	77.0	73	85	79	78	79	79	75	79	77
Inner London	12.6	12.1	24.7	69	82	75	73	75	74	71	75	73
Camden	0.6	0.9	1.5	73	86	81	74	79	77	69	78	74
Hackney	0.6	0.9	1.4	70	81	77	74	75	74	72	76	75
Hammersmith and Fulham	0.5	0.4	0.8	75	84	79	81	79	80	75	78	77
Haringey	1.1	1.1	2.2	60	76	68	69	71	70	66	72	69
Islington	0.9	0.7	1.6	69	73	71	73	73	73	66	71	68
Kensington and Chelsea	0.3	0.3	0.6	91	92	91	84	81	83	92	95	93
Lambeth	0.9	0.9	1.8	76	86	81	78	79	79	76	75	76
Lewisham	1.3	1.1	2.4	62	82	72	68	71	70	70	76	73
Newham	1.8	1.8	3.6	69	80	74	72	73	72	72	74	73
Southwark	1.1	1.2	2.3	67	81	74	74	75	74	64	70	67
Tower Hamlets	1.3	1.3	2.6	65	81	73	71	77	74	69	75	72
Wandsworth	1.2	0.9	2.1	74	84	78	77	75	76	74	73	73
Westminster	0.9	0.7	1.6	73	89	80	75	85	80	71	85	77
Outer London	26.7	25.5	52.3	75	86	80	80	81	81	77	81	79
Barking and Dagenham	1.2	1.1	2.2	71	82	76	77	76	76	74	72	73
Barnet	2.0	1.6	3.6	78	86	82	85	82	84	83	85	84
Bexley	1.7	1.8	3.6	79	89	84	82	82	82	78	83	81
Brent	1.3	1.2	2.6	68	82	75	79	78	79	71	75	73
Bromley	1.8	1.7	3.5	85	91	88	86	85	85	83	85	84
Croydon	1.8	2.0	3.8	75	85	80	79	80	80	74	76	75
Ealing	1.6	1.4	3.0	68	83	75	76	80	78	71	76	74
Enfield	2.0	1.7	3.8	72	82	77	77	77	77	74	78	76
Greenwich	1.1	1.2	2.3	65	82	73	71	73	72	68	76	72
Harrow	1.2	1.1	2.3	68	82	75	80	81	80	74	77	75
Havering	1.6	1.5	3.1	81	91	86	83	83	83	81	83	82
Hillingdon	1.6	1.4	3.0	72	84	78	83	81	82	80	81	80
Hounslow	1.3	1.3	2.6	72	86	79	80	83	81	80	83	82
Kingston upon Thames	0.7	0.8	1.5	83	93	88	85	87	86	79	88	84
Merton	0.8	0.8	1.6	75	88	81	74	81	77	75	78	76
Redbridge	1.8	1.7	3.5	81	90	85	85	84	84	83	86	85
Richmond upon Thames	0.6	0.7	1.3	77	87	82	84	85	84	84	86	85
Sutton	1.2	1.3	2.5	84	93	89	85	92	88	91	90	90
Waltham Forest	1.3	1.1	2.5	66	80	72	72	75	74	64	72	68
SOUTH EAST	46.5	43.8	90.3	75	87	81	81	82	82	81	83	82
Bracknell Forest	0.6	0.6	1.1	77	87	82	85	85	85	82	82	82
Brighton and Hove	1.2	1.1	2.2	76	88	81	75	78	77	78	83	81
Buckinghamshire	2.9	2.8	5.7	80	91	85	85	87	86	83	86	84
East Sussex	2.6	2.5	5.1	72	85	79	81	82	81	80	84	82
Hampshire	7.5	6.9	14.3	76	88	82	82	83	83	82	85	83
Isle of Wight	0.8	0.7	1.5	71	86	78	79	79	79	79	81	80
Kent	8.5	7.9	16.4	72	84	78	78	80	79	77	80	79
Medway	1.6	1.7	3.3	70	84	77	74	77	76	73	75	74
Milton Keynes	1.6	1.5	3.1	74	85	80	81	81	81	79	82	80
Oxfordshire	3.2	2.9	6.1	74	87	80	80	82	81	81	83	82
Portsmouth	0.9	0.9	1.9	70	84	77	77	78	77	74	74	74
Reading	0.6	0.5	1.1	66	80	73	76	81	78	74	76	75
Slough	0.8	0.8	1.7	71	83	77	81	79	80	75	81	78
Southampton	1.0	1.1	2.1	61	81	71	70	77	74	71	81	77
Surrey	5.5	5.1	10.7	80	90	85	84	85	84	84	87	86
West Berkshire	1.0	0.9	1.9	78	89	83	85	86	85	85	88	86
West Sussex	4.5	4.3	8.8	79	88	83	84	84	84	83	84	84
Windsor and Maidenhead	0.8	0.7	1.6	78	90	84	85	86	85	86	84	85
Wokingham	0.9	0.8	1.6	85	94	89	88	88	88	88	92	90
SOUTH WEST	28.5	27.1	55.6	74	87	80	81	82	82	81	84	83
Bath and North East Somerset	1.0	1.1	2.1	79	89	84	82	83	82	85	85	85
Bournemouth	0.9	0.8	1.7	75	88	81	81	82	82	78	83	80
Bristol, City of	1.6	1.5	3.0	65	80	72	71	73	72	69	74	71
Cornwall	3.0	2.7	5.7	74	88	81	79	81	80	83	86	84
Devon	4.1	3.8	7.9	74	88	81	82	83	82	82	85	84
Dorset	2.1	2.0	4.1	75	88	81	83	84	84	83	84	84
Gloucestershire	3.7	3.4	7.1	78	90	84	84	85	85	84	86	85
Isles of Scilly	0.0	0.0	0.0	60	100	83	x	100	x	100	x	x
North Somerset	1.2	1.1	2.3	69	84	76	83	82	82	83	85	84
Plymouth	1.2	1.5	2.6	62	81	73	71	75	73	77	82	80
Poole	0.8	0.8	1.6	75	88	82	81	85	83	82	85	84
Somerset	2.9	2.7	5.6	72	86	78	80	83	82	81	84	82
South Gloucestershire	1.6	1.5	3.1	76	89	82	85	85	85	82	85	84
Swindon	1.2	1.1	2.3	76	88	82	80	83	81	78	82	80
Torbay	0.8	0.7	1.5	71	87	78	81	85	83	77	86	81
Wiltshire	2.6	2.4	5.0	78	88	82	84	83	84	84	86	85
ENGLAND (Maintained schools only, including Academies and CTCs) ¹	294.6	280.9	575.5	73	86	79	80	81	80	79	82	80
ENGLAND (All schools) ³	-	-	-	73	86	79	79	81	80	79	82	80

1. Figures for academies are included in the individual LA figures and also in the total for England Maintained schools, but figures exclude hospital schools and pupil referral units.

2. Number of eligible pupils with a valid result in at least one subject.

3. The figures in this table include those independent schools who chose to take part in Teacher Assessments

4. In 2009 the local authorities of Cheshire and Bedfordshire were replaced by the four new unitary authorities of Bedford, Central Bedfordshire, Cheshire East, Cheshire West and Chester.

Table 13: Percentage of pupils achieving Level 6 or above in the Key Stage 3 teacher assessments by Local Authority (LA), Government Office Region and gender.

Year: 2010

Coverage: England

	Number of eligible pupils ²			English			Mathematics			Science		
	Boys	Girls	All	Boys	Girls	All	Boys	Girls	All	Boys	Girls	All
NORTH EAST	14.8	14.1	28.9	32	49	40	57	57	57	45	48	46
Darlington	0.6	0.6	1.2	45	64	55	61	64	63	53	60	57
Durham	2.8	2.7	5.5	35	53	44	58	60	59	49	52	51
Gateshead	1.1	1.0	2.1	34	49	41	56	58	57	44	44	44
Hartlepool	0.6	0.6	1.2	28	48	38	55	59	57	41	47	44
Middlesbrough	0.8	0.7	1.6	26	41	33	50	50	50	35	37	36
Newcastle upon Tyne	1.3	1.2	2.5	26	40	33	55	52	54	37	39	38
North Tyneside	1.1	1.1	2.2	36	48	42	68	62	65	55	52	53
Northumberland	1.9	1.7	3.5	35	53	43	59	61	60	44	49	46
Redcar and Cleveland	0.9	0.9	1.8	33	49	41	62	58	60	54	52	53
South Tyneside	1.0	1.0	2.0	25	43	34	50	49	50	38	38	38
Stockton-on-Tees	1.2	1.1	2.2	33	53	42	58	56	57	47	49	48
Sunderland	1.6	1.5	3.1	27	50	38	52	54	53	42	47	44
NORTH WEST	40.7	39.4	80.0	35	51	43	58	57	58	47	48	48
Blackburn with Darwen	1.1	0.9	2.0	33	47	39	51	46	49	46	44	45
Blackpool	0.8	0.8	1.5	28	45	37	52	48	50	44	44	44
Bolton	1.8	1.7	3.5	34	49	41	57	55	56	46	47	47
Bury	1.1	1.1	2.2	43	59	51	61	61	61	53	52	53
Cheshire East	1.8	2.0	3.8	39	57	49	66	67	67	57	57	57
Cheshire West and Chester	1.9	1.8	3.7	34	50	42	59	59	59	49	49	49
Cumbria	3.1	2.9	6.0	39	58	48	61	61	61	53	54	53
Halton	0.7	0.7	1.4	31	48	39	52	49	51	49	55	52
Knowsley	0.7	0.7	1.4	18	31	24	38	40	39	25	27	26
Lancashire	6.7	6.4	13.2	38	54	46	61	60	61	51	52	52
Liverpool	2.7	2.8	5.5	37	43	40	49	51	50	43	42	43
Manchester	2.2	2.2	4.4	27	42	34	42	44	43	29	33	31
Oldham	1.5	1.5	3.0	29	48	38	55	57	56	41	45	43
Rochdale	1.2	1.2	2.4	30	47	38	54	56	55	36	40	38
Salford	0.8	0.9	1.7	26	41	34	46	47	47	34	34	34
Sefton	1.7	1.6	3.3	39	55	46	64	62	63	51	53	52
St. Helens	1.0	1.0	2.0	27	43	35	56	58	57	43	46	44
Stockport	1.5	1.4	2.9	36	55	45	61	58	60	52	53	52
Tameside	1.5	1.4	2.9	33	46	39	57	53	55	41	41	41
Trafford	1.7	1.5	3.2	53	63	58	70	68	69	63	61	62
Warrington	1.3	1.2	2.4	34	56	44	66	68	67	54	59	57
Wigan	2.0	1.8	3.7	31	54	42	59	61	60	44	47	45
Wirral	2.0	1.9	3.8	37	57	47	62	59	60	53	53	53
YORKSHIRE & HUMBER	31.3	30.2	61.4	32	49	40	56	55	56	45	47	46
Barnsley	1.4	1.2	2.6	25	45	35	48	49	48	39	43	41
Bradford	2.8	3.0	5.8	28	45	37	51	50	51	36	38	37
Calderdale	1.3	1.3	2.7	35	55	45	60	61	61	49	53	51
Doncaster	2.1	2.1	4.2	30	46	38	50	48	49	44	46	45
East Riding of Yorkshire	1.9	1.9	3.9	35	54	44	65	62	64	53	55	54
Kingston upon Hull, City of	1.4	1.3	2.7	22	36	28	45	44	44	38	38	38
Kirklees	2.6	2.4	4.9	35	54	44	57	56	57	43	44	43
Leeds	4.1	3.9	8.0	32	48	40	56	54	55	46	46	46
North East Lincolnshire	1.0	1.0	2.0	32	44	38	47	50	48	39	44	41
North Lincolnshire	1.0	1.0	2.0	29	48	38	58	53	56	50	49	50
North Yorkshire	3.6	3.3	6.9	43	61	52	67	67	67	60	61	60
Rotherham	1.7	1.8	3.5	25	44	35	53	56	55	38	44	41
Sheffield	3.0	2.8	5.8	28	45	36	53	54	53	41	44	42
Wakefield	2.3	2.2	4.5	27	44	35	53	55	54	41	47	44
York	1.0	0.9	1.9	47	63	55	70	69	69	57	56	56
EAST MIDLANDS	25.7	24.4	50.1	35	53	44	60	60	60	49	51	50
Derby	1.4	1.3	2.8	38	52	45	56	50	53	46	46	46
Derbyshire	4.4	4.1	8.5	32	53	42	60	62	61	48	52	50
Leicester	1.8	1.7	3.5	23	41	32	51	50	51	38	45	42
Leicestershire	3.7	3.5	7.2	43	61	52	69	69	69	61	61	61
Lincolnshire	4.3	4.2	8.4	39	57	48	62	62	62	50	53	52
Northamptonshire	4.2	3.9	8.2	34	53	43	59	61	60	48	49	48
Nottingham	1.3	1.2	2.5	19	32	25	46	46	46	33	35	34
Nottinghamshire	4.3	4.2	8.5	34	53	43	58	59	58	48	49	48
Rutland	0.2	0.2	0.5	48	66	57	73	65	69	59	58	59
WEST MIDLANDS	33.7	31.9	65.6	33	49	41	55	55	55	45	47	46
Birmingham	6.8	6.4	13.2	30	45	38	49	50	50	41	44	42
Coventry	1.8	1.8	3.6	30	43	37	51	52	51	36	40	38
Dudley	2.1	1.9	4.0	34	53	43	55	55	55	46	45	46
Herefordshire	1.0	0.9	1.9	32	51	41	64	62	63	53	53	53
Sandwell	1.9	1.8	3.7	22	36	28	45	43	44	30	30	30
Shropshire	1.6	1.5	3.1	39	55	47	59	60	60	52	54	53
Solihull	1.6	1.6	3.2	46	59	53	62	56	59	52	51	52
Staffordshire	5.3	5.0	10.2	33	52	42	61	60	60	48	49	49
Stoke-on-Trent	1.2	1.2	2.5	30	46	38	49	48	48	39	42	40
Telford and Wrekin	1.1	1.0	2.1	37	49	42	58	54	56	51	50	50
Walsall	1.8	1.7	3.5	32	44	38	56	49	53	40	41	41
Warwickshire	3.0	2.8	5.8	42	59	50	65	65	65	55	56	56
Wolverhampton	1.3	1.3	2.7	26	45	36	47	49	48	37	46	41
Worcestershire	3.1	3.0	6.1	32	49	40	58	57	58	50	52	51
EAST OF ENGLAND	34.2	32.5	66.7	36	53	44	61	60	61	49	50	50
Bedford	0.9	0.8	1.7	29	43	36	57	54	56	42	37	40
Bedfordshire, Central	1.7	1.5	3.2	35	51	42	64	64	64	55	55	55
Cambridgeshire	3.1	3.0	6.1	39	57	48	63	63	63	55	56	55

Essex	8.2	7.8	16.0	35	53	43	60	61	61	47	49	48
Hertfordshire	7.0	6.8	13.8	45	63	54	67	67	67	54	56	55
Luton	1.3	1.2	2.4	33	46	39	52	53	53	35	39	37
Norfolk	4.5	4.3	8.8	30	47	38	59	57	58	46	48	47
Peterborough	1.1	1.1	2.3	26	38	31	52	48	50	40	40	40
Southend-on-Sea	1.1	1.1	2.2	50	55	53	64	62	63	52	55	53
Suffolk	4.3	4.0	8.3	35	50	42	60	57	58	50	49	50
Thurrock	1.0	0.9	2.0	23	42	32	50	51	50	37	42	39
LONDON	39.3	37.7	77.0	36	51	43	57	57	57	44	48	46
Inner London	12.6	12.1	24.7	31	45	38	50	51	50	39	43	41
Camden	0.6	0.9	1.5	32	54	45	53	50	51	37	43	41
Hackney	0.6	0.9	1.4	38	42	40	53	51	52	36	43	40
Hammersmith and Fulham	0.5	0.4	0.8	49	48	48	58	57	58	51	44	48
Haringey	1.1	1.1	2.2	25	41	33	42	42	42	37	44	40
Islington	0.9	0.7	1.6	25	32	28	47	50	48	31	34	32
Kensington and Chelsea	0.3	0.3	0.6	74	68	71	72	60	67	65	63	64
Lambeth	0.9	0.9	1.8	35	47	41	54	50	52	46	43	45
Lewisham	1.3	1.1	2.4	26	41	33	43	46	44	35	38	37
Newham	1.8	1.8	3.6	30	45	38	50	51	50	39	42	40
Southwark	1.1	1.2	2.3	28	43	35	47	48	48	30	35	33
Tower Hamlets	1.3	1.3	2.6	23	41	32	44	48	46	33	40	37
Wandsworth	1.2	0.9	2.1	35	45	39	57	55	56	46	40	43
Westminster	0.9	0.7	1.6	30	59	43	53	64	58	46	69	56
Outer London	26.7	25.5	52.3	38	54	45	60	60	60	46	50	48
Barking and Dagenham	1.2	1.1	2.2	29	42	35	51	45	48	35	36	36
Barnet	2.0	1.6	3.6	47	58	52	67	61	64	55	57	56
Bexley	1.7	1.8	3.6	44	61	53	60	61	60	49	50	49
Brent	1.3	1.2	2.6	35	49	42	61	56	59	42	44	43
Bromley	1.8	1.7	3.5	48	59	54	67	63	65	54	58	56
Croydon	1.8	2.0	3.8	32	47	40	57	59	58	42	41	41
Ealing	1.6	1.4	3.0	33	49	41	55	56	56	42	46	44
Enfield	2.0	1.7	3.8	31	48	39	57	54	56	41	46	43
Greenwich	1.1	1.2	2.3	27	46	36	47	47	47	34	40	37
Harrow	1.2	1.1	2.3	30	47	38	57	62	59	41	47	44
Havering	1.6	1.5	3.1	39	59	49	63	64	64	52	54	53
Hillingdon	1.6	1.4	3.0	33	46	39	61	57	59	44	45	45
Hounslow	1.3	1.3	2.6	32	55	43	55	60	57	48	52	50
Kingston upon Thames	0.7	0.8	1.5	55	67	61	73	71	72	56	62	59
Merton	0.8	0.8	1.6	37	53	45	51	59	55	41	50	45
Redbridge	1.8	1.7	3.5	44	57	50	68	66	67	54	56	55
Richmond upon Thames	0.6	0.7	1.3	44	62	53	66	69	68	59	63	61
Sutton	1.2	1.3	2.5	57	68	63	72	76	74	61	68	64
Waltham Forest	1.3	1.1	2.5	24	43	33	47	48	47	31	39	35
SOUTH EAST	46.5	43.8	90.3	39	55	47	62	61	61	51	52	52
Bracknell Forest	0.6	0.6	1.1	39	52	45	67	62	64	50	49	49
Brighton and Hove	1.2	1.1	2.2	41	57	48	57	57	57	53	55	54
Buckinghamshire	2.9	2.8	5.7	50	65	58	69	71	70	59	62	60
East Sussex	2.6	2.5	5.1	34	53	43	58	58	58	46	48	47
Hampshire	7.5	6.9	14.3	36	54	44	61	60	60	52	54	53
Isle of Wight	0.8	0.7	1.5	33	49	41	59	55	57	52	54	53
Kent	8.5	7.9	16.4	41	51	46	60	58	59	48	48	48
Medway	1.6	1.7	3.3	34	51	43	54	55	55	40	43	42
Milton Keynes	1.6	1.5	3.1	33	48	40	60	59	59	46	49	47
Oxfordshire	3.2	2.9	6.1	36	52	43	61	59	60	53	53	53
Portsmouth	0.9	0.9	1.9	35	48	42	52	49	50	40	36	38
Reading	0.6	0.5	1.1	36	57	46	59	58	59	45	48	47
Slough	0.8	0.8	1.7	38	50	44	63	61	62	49	46	48
Southampton	1.0	1.1	2.1	25	45	36	45	52	48	34	48	42
Surrey	5.5	5.1	10.7	43	62	52	67	66	66	58	58	58
West Berkshire	1.0	0.9	1.9	41	59	50	65	63	64	55	56	55
West Sussex	4.5	4.3	8.8	40	55	47	64	61	63	51	51	51
Windsor and Maidenhead	0.8	0.7	1.6	37	60	48	65	66	66	55	54	55
Wokingham	0.9	0.8	1.6	50	68	59	67	68	67	62	73	67
SOUTH WEST	28.5	27.1	55.6	36	53	44	60	60	60	50	52	51
Bath and North East Somerset	1.0	1.1	2.1	41	58	50	66	63	64	61	61	61
Bournemouth	0.9	0.8	1.7	38	59	48	59	62	60	51	57	53
Bristol, City of	1.6	1.5	3.0	30	46	38	48	49	48	39	42	40
Cornwall	3.0	2.7	5.7	38	54	45	59	57	58	50	51	51
Devon	4.1	3.8	7.9	32	50	41	60	58	59	50	51	50
Dorset	2.1	2.0	4.1	34	50	42	63	62	63	50	50	50
Gloucestershire	3.7	3.4	7.1	44	60	51	66	66	66	57	57	57
Isles of Scilly	0.0	0.0	0.0	50	77	65	70	100	87	x	x	83
North Somerset	1.2	1.1	2.3	30	44	37	58	55	57	50	50	50
Plymouth	1.2	1.5	2.6	21	45	35	48	52	50	39	48	44
Poole	0.8	0.8	1.6	38	53	45	66	64	65	59	59	59
Somerset	2.9	2.7	5.6	34	55	44	58	63	60	47	51	49
South Gloucestershire	1.6	1.5	3.1	30	48	38	65	62	63	50	49	50
Swindon	1.2	1.1	2.3	33	51	42	55	56	55	40	42	41
Torbay	0.8	0.7	1.5	42	57	49	62	64	63	47	49	48
Wiltshire	2.6	2.4	5.0	43	57	49	64	65	64	56	58	57
ENGLAND (Maintained schools only, including Academies and CTCs) ¹	294.6	280.9	575.5	35	52	43	59	58	58	47	49	48
ENGLAND (All schools) ³	-	-	-	35	52	43	58	58	58	47	49	48

1. Figures for academies are included in the individual LA figures and also in the total for England Maintained schools, but figures exclude hospital schools and pupil referral units.

2. Number of eligible pupils with a valid result in at least one subject.

3. The figures in this table include those independent schools who chose to take part in Teacher Assessments

4. In 2009 the local authorities of Cheshire and Bedfordshire were replaced by the four new unitary authorities of Bedford, Central Bedfordshire, Cheshire East, Cheshire West and Chester.