

EC Type Examination Certificate Number: **UK/ 0120/ SGS0022**

Remote Energy Monitoring Ltd

The Counting House
High Street
Tring
Hertfordshire
HP23 5TE

Instrument Identification:

MMM

Single Phase, Credit/ Pre-payment, Import, Multi-rate, Electricity Meter

Instrument Traceable Number

UK/ 0120/ SGS0022

has been assessed and certified as meeting the requirements of

EC Directive 2004/22/EC on Measuring Instruments Annex B

It is certified that the manufacturer's technical design and specimen for the above instrument has been examined and, based on the evidence submitted, it is considered that the instrument conforms to the requirements of MI-003 of EC Directive 2004/22/EC.

This certificate is issued in conjunction with a certificate covering the product verification as required in Annex D or Annex F.

This certificate is valid for 10 years from 6th February 2009 until 5th February 2019
Issue 2

Certification is based on report number(s) EMA120283 dated 6th February 2009

Notified Body Number 0120

Authorised Signature
Mr J Weaver



CE
0120

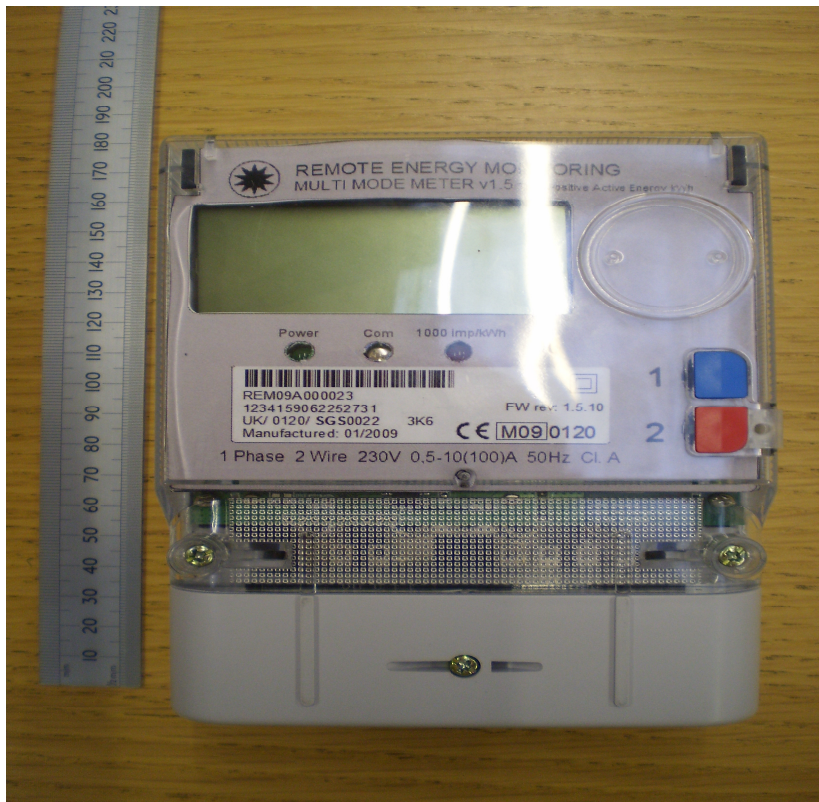
Notified Body
SGS United Kingdom Ltd, 202B Worle Parkway, Weston-super-Mare, BS22 6WA UK
t +44 (0)1934 522917 f +44 (0)1934 522137 www.sgs.com
Contact Address
SGS United Kingdom Ltd, Unit 10, South Industrial Estate, Bowburn, Durham, DH6 5AD UK
t +44 (0)191 377 2000 f +44 (0)191 377 2020 www.sgs.com

EC Type Examination Cert.

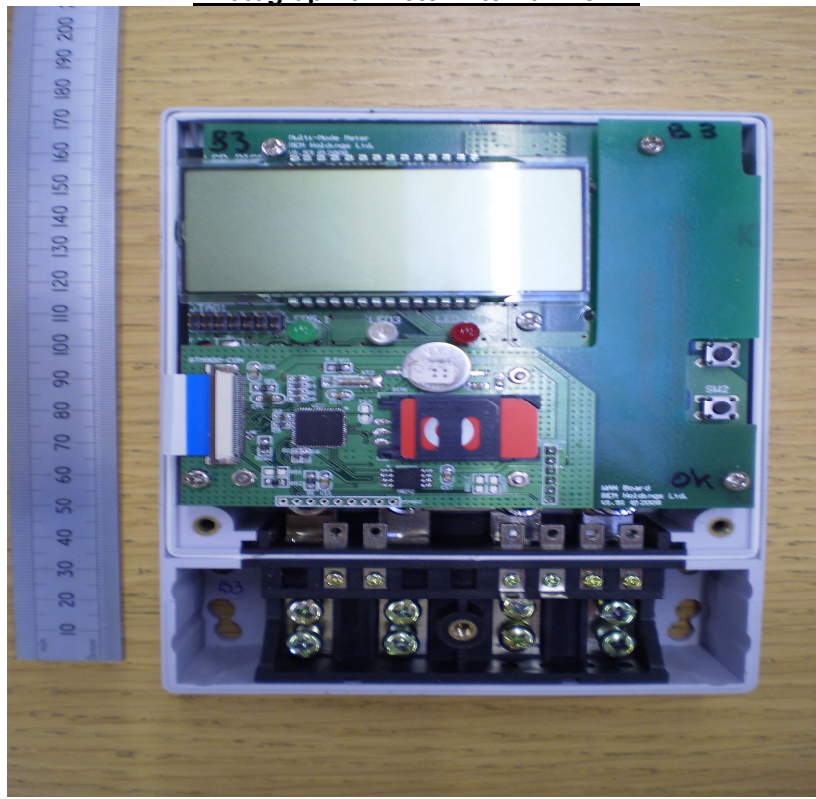
Approval Annex for EC Type Examination Cert. No. SGS0022

Manufacturer	: Remote Energy Monitoring Ltd		
Type of Meter(s)	: MMM		
Description of Meter	: Single Phase, Credit/ Pre-payment, Import, Multi-rate, Electricity Meter		
Accuracy Class (es)	: A (kWh)	Software Version No	: 1.5.10
		Location	: Nameplate
Firmware Version No	: 1.5.10	Bill Of Materials No	: REM_BOM_v1.53
Location	: Nameplate		
Meter Location	: Indoor	Sealing Type	: Wire & Crimp
		Location	: 2 x Front of meter
Integrity of Meter	: Inaccessible without breaking seals	Temperature Range	: -40°C to 70°C
Type of Circuit	: 1p2w	Frequency	: 50Hz
Current Range (A)	: 0,5-10(100)A	Voltage Range (V)	: 230V

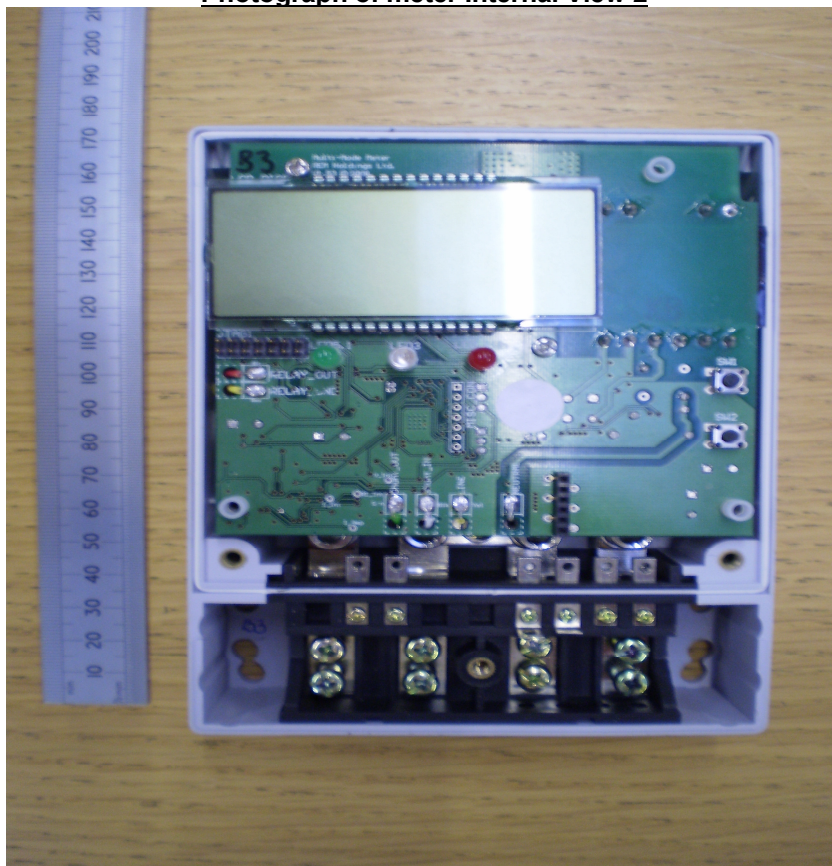
Photograph of meter External View 1

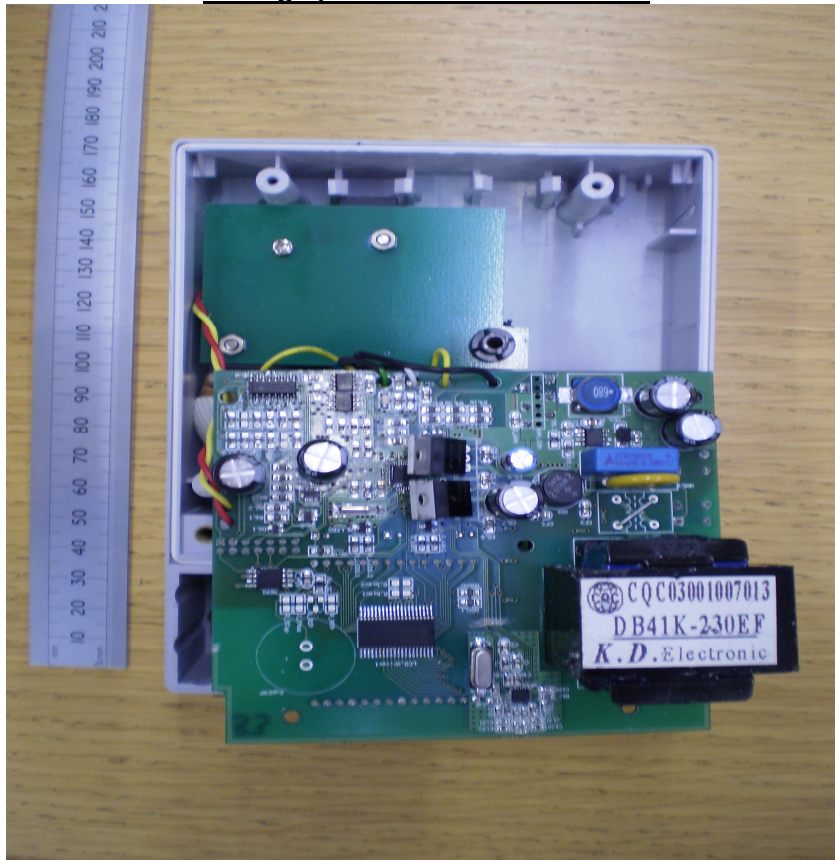


Photograph of meter Internal View 1



Photograph of meter Internal View 2



Photograph of meter Internal View 3

Modifications to the meter(s) described according to approval No. **SGS0022** must be notified to the issuing body to confirm the meter(s) continuing compliance to the relevant pattern approval standard(s).