



# Monthly Statistics of Building Materials and Components

Commentary

September 2013

Coverage: UK and Great Britain  
Geographical area: Country, region and  
county  
Date of publication: 2 October 2013

## Contents

Headline results .....	1
Introduction .....	2
Summary of results .....	3
Economic background .....	9
Background notes .....	10
Uses of the data .....	11
Related Statistics .....	11
Revisions .....	12
Further information .....	12

## Headline results:

- The 'All Work' Construction Material Price Index rose by 0.9% in the year to August, down from 1.1% in July.
- The construction materials experiencing the largest price increases in the year to August were Rigid Pipes and Fittings (up 6.5%), Sand and Gravel including levy (up 5.8%) and Sand and Gravel excluding levy (up 5.7%).
- In the year to August, deliveries of bricks rose by 7.3% and deliveries of blocks fell by 8.0%.
- Exports of construction materials rose by 8.2% on the quarter in 2013Q2 (to £1,474 million). Imports rose by 6.1% (to £3,150 million). As a result, the trade deficit widened by £68 million, to £1,676 million, in 2013Q2.

## Introduction

This commentary accompanies the latest Monthly Statistics of Building Materials and Components bulletin, published on the BIS building materials [web page](#) on 2 October 2013. It aims to provide a brief overview of recent trends in the data presented in the bulletin.

The bulletin presents the latest detailed information on selected building materials and components. It covers the following building materials statistics (in parentheses, the data collection frequency and the geographical area covered):

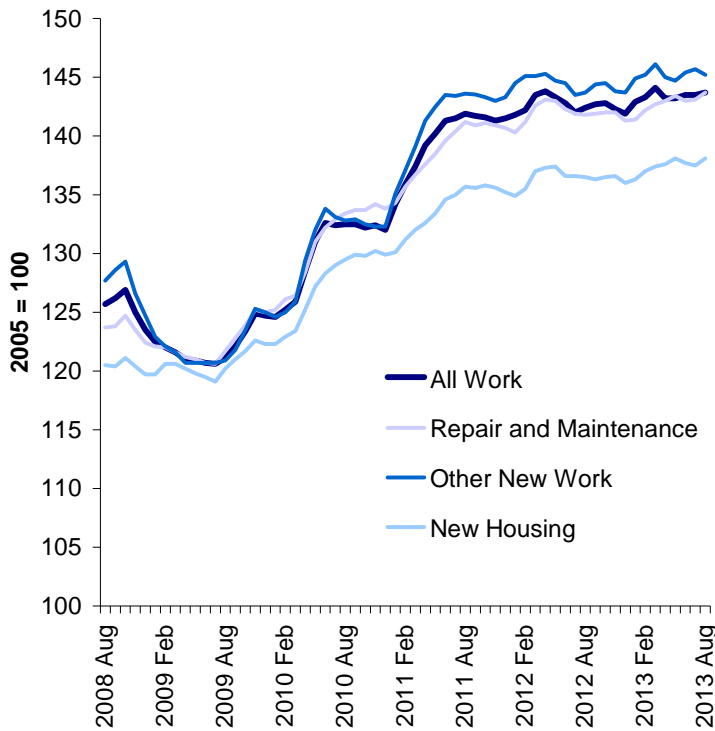
- Construction Material Price Indices (monthly, UK)
- Sand and Gravel sales (quarterly, GB\*)
- Slate production, deliveries and stocks (quarterly, GB)
- Cement and Clinker production, deliveries and stocks (monthly, GB)
- Bricks production, deliveries and stocks (monthly, GB\*)
- Concrete building blocks production, deliveries and stocks (monthly, GB\*)
- Concrete roofing tiles production, deliveries and stocks (quarterly, GB)
- Ready Mixed Concrete deliveries (quarterly, UK)
- Values of overseas imports and exports trades for selected materials and components for use in construction (quarterly, UK)
- Value of EU and Non-EU Trade for selected materials and components for use in construction (annual, UK)

Note: \* Regional figures available

The statistics support analysis of the construction materials market and business planning. They are regularly reported in the construction press and are used for a variety of purposes, including policy development and evaluation concerning the construction products industry, as well as monitoring market trends. Further detail is available in this document under [Uses of the data](#).

## Summary of results

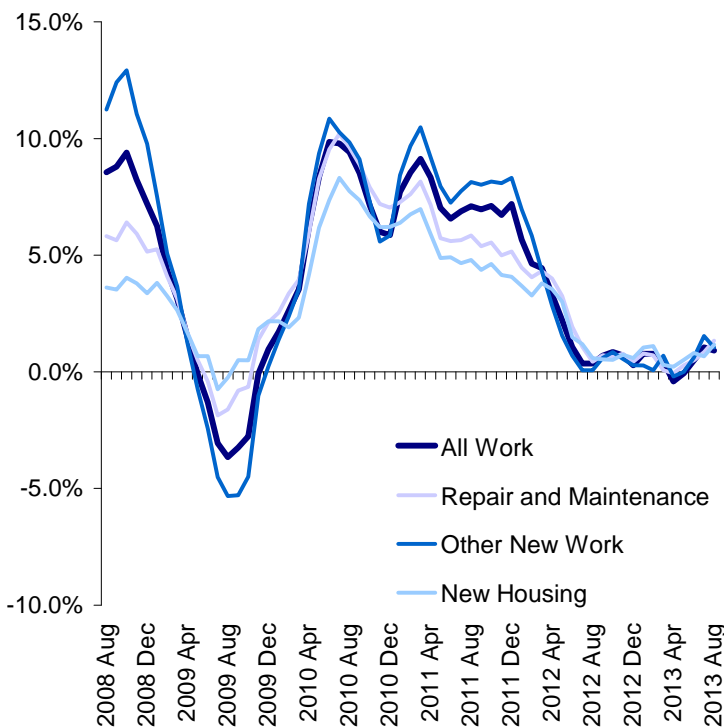
**Chart 1: Construction Material Price Indices, UK**



The headline 'All Work' Construction Material Price index rose 0.1% on the month in August, following no change on the month in July.

**Chart 2: Growth in Construction Material Price Indices, UK**

Percentage change over a year earlier (%)



Annual construction material price inflation fell to 0.9% in August, from 1.1% in July. Annual inflation in July was the highest since June 2012 (which was also 1.1%). Since June 2012, annual inflation has not been lower than -0.4% (in April 2013).

In August, the 'Repair and Maintenance' sector saw annual inflation rise to 1.3%, from 0.8% in July, in the 'New Housing' sector it rose to 1.2% from 0.7% and in the 'Other New Work' sector it fell to 1.0% from 1.5%.

**Table 1: Construction materials experiencing the largest price increases and decreases in the year to August 2013, UK**

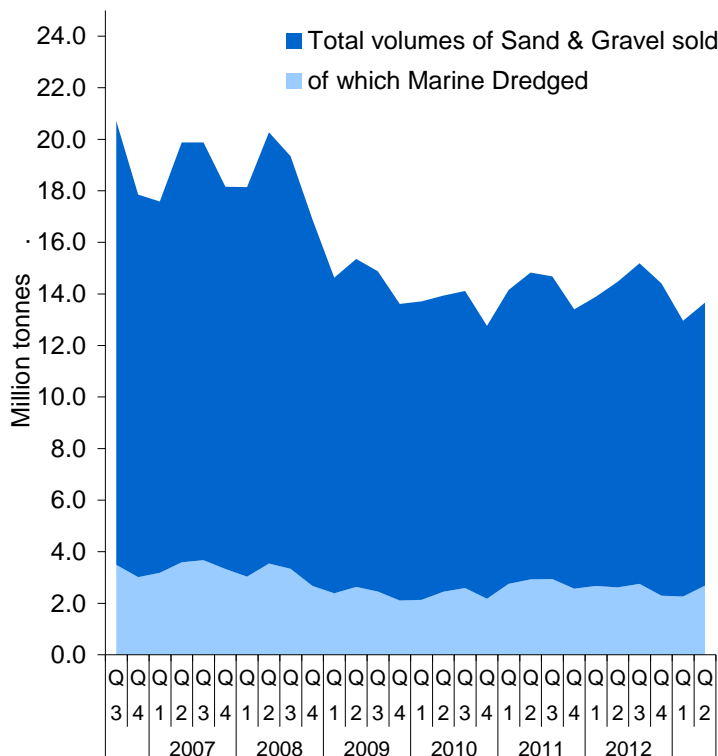
Construction Materials	% change on a year earlier
<b>Largest price increases</b>	
Pipes and Fittings (rigid)	6.5
Sand & Gravel (including levy)	5.8
Sand & Gravel (excluding levy)	5.7
<b>Largest price decreases</b>	
Fabricated Structural Steel	-5.8
Doors & Windows (builders woodwork)	-2.0
Crushed Rock (including levy)	-0.3

Rigid Pipes and Fittings (up 6.5%), Sand and Gravel including levy (up 5.8%) and Sand and Gravel excluding levy (up 5.7%) experienced the largest price increases in the year to August. Over the same period, Fabricated Structural Steel (down 5.8%), Doors and Windows from builders woodworking (down 2.0%) and Crushed Rock including levy (down 0.3%) experienced the largest price falls.

The aggregates levy (e.g. the levy in ‘Sand & Gravel including levy’) is a tax on the commercial exploitation of aggregates which applies under certain circumstances. Further information is available from [HM Revenue & Customs](http://www.hmrc.gov.uk/levies/agg.htm).

Source: Table 2 Monthly Statistics of Building Materials and Components

**Chart 3: Volumes of Total and Marine Dredged Sand and Gravel sold, GB**



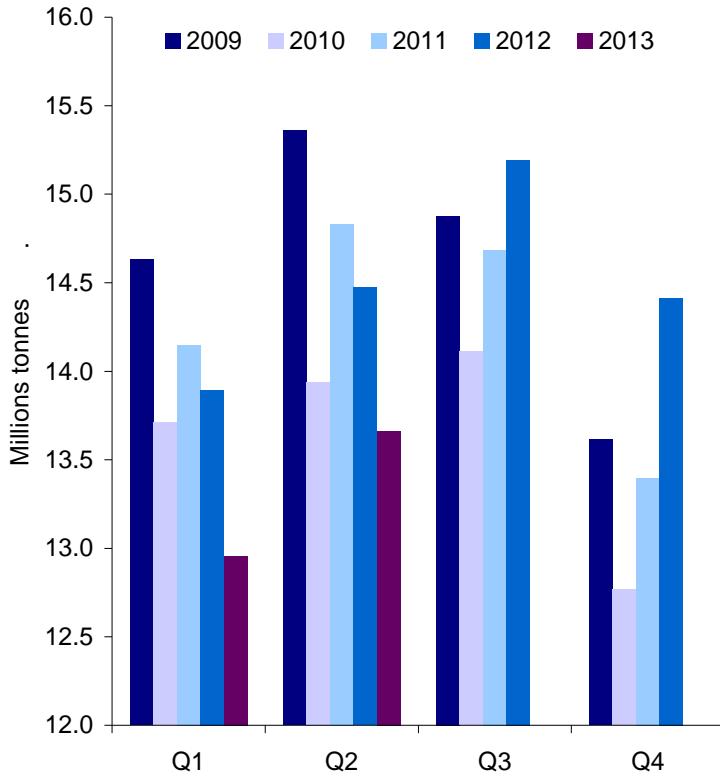
Source: Table 4 Monthly Statistics of Building Materials and Components

Volumes of Sand and Gravel sold in Great Britain increased by 5.4% on the quarter in 2013Q2, to 13.7 million tonnes. This follows a quarterly decrease of 10.1% in 2013Q1.

Chart 3 shows a sharp drop in the total sales trend around the end of 2008. Before the UK economy entered recession in 2008Q2, quarterly sales averaged 19.1 million tonnes. During this recession, sales averaged 17.3 million tonnes. Following this recession (from 2009Q3), sales averaged 14.0 million tonnes.

The proportion of Sand and Gravel sold that was Marine Dredged has been fairly constant each quarter, ranging between 15.5% and 21.0% of total sales.

**Chart 4: Volumes of Sand and Gravel sold, GB**



Source: Table 4, Monthly Statistics of Building Materials and Components

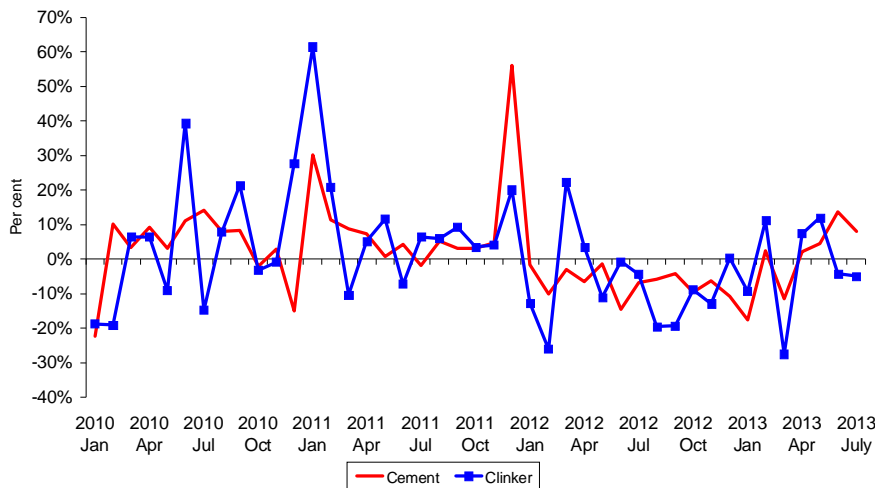
A closer look at the differences in total Sand and Gravel sales (Chart 4) shows that the volume sold in quarter 4 of 2012 was the largest compared to the same quarter in each year from 2009 to 2011. Compared to 2011Q4, sales rose by 7.6% in 2012Q4.

Continuing to compare sales in the same quarter across each year, quarter 3 sales in 2012 were also the largest since 2009. Compared to 2011Q3, sales rose by 3.5% in 2012Q3.

However, sales figures suggest that quarter 1 sales volumes in 2013 were the lowest seen in the first quarter of any year since 2009, falling 6.7% from 2012Q1.

Seasonal effects may help to explain these differences. The number of working days in a quarter varies each year, which may affect comparisons over periods.

**Chart 5: Production of Cement and Clinker, GB**  
Percentage change over a year earlier (%)

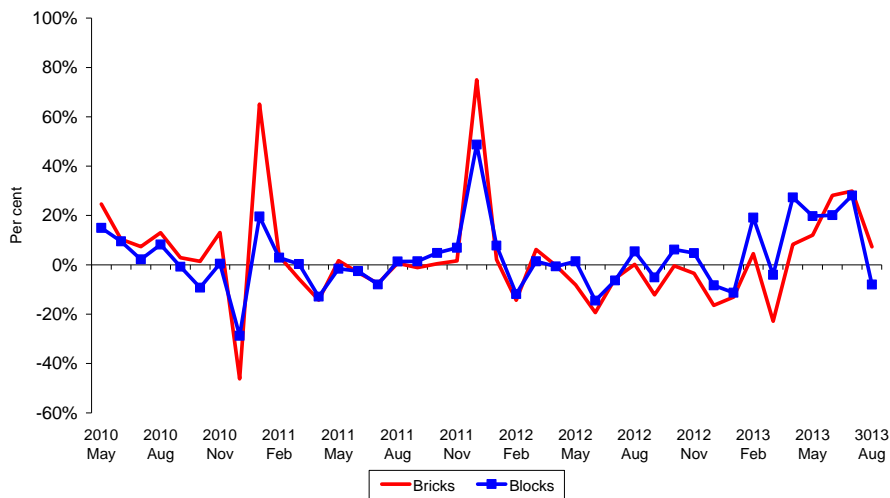


Source: Table 8 Monthly Statistics of Building Materials and Components

Cement production rose by 7.9% to 795 thousand tonnes in the year to July 2013. This was the fourth consecutive year-on-year rise. Each month in 2012 saw a year-on-year decline. Each month in 2011 except July saw positive year-on-year growth.

Production of Clinker fell in the year to July, by 5.0%, following a decrease of 4.2% in the year to June. This is the eighth decrease on this basis in the twelve months to July.

**Chart 6: Deliveries of Bricks and Blocks, GB**  
Percentage change over a year earlier (%)

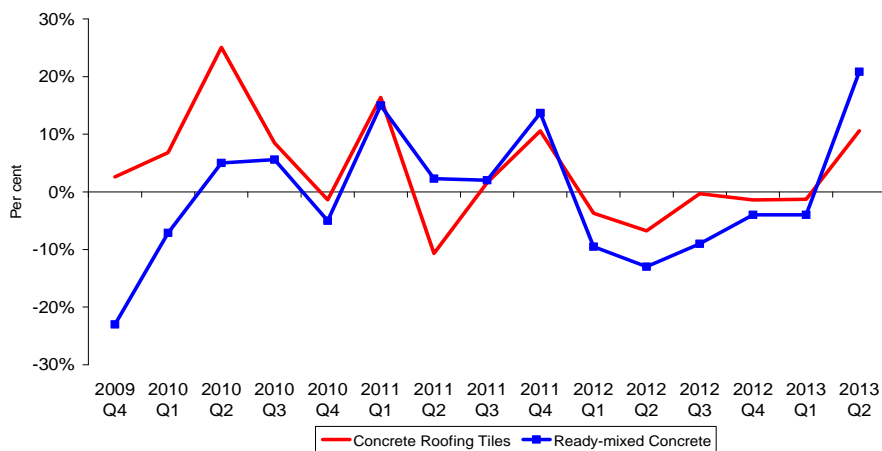


Source: Tables 9 and 11 Monthly Statistics of Building Materials and Components

In the year to August 2013, deliveries of Bricks rose by 7.3%, following a rise of 29.9% in the year to July. This increase in brick deliveries coincides with a reported surge in recent house building activity (see the [Economic Background](#) for further detail)

Production of Blocks fell in the year to August, by 8.0%, following four successive months of increases on this basis; increases of 27.3%, 19.7%, 20.1% and 28.1% in the year to April, May, June and July respectively.

**Chart 7: Deliveries of Concrete Roofing Tiles (GB) and Ready-mixed Concrete (UK)**  
Percentage change over a year earlier (%)



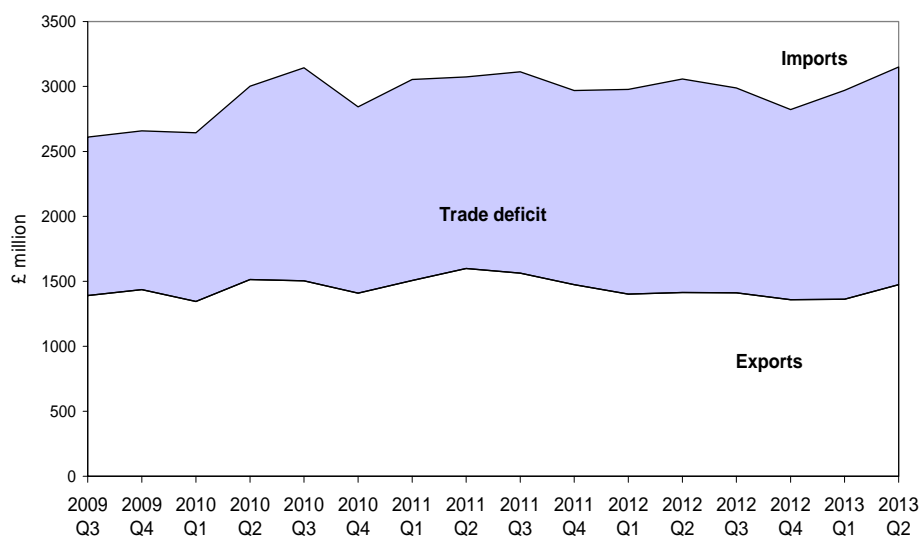
Source: Table 13 Monthly Statistics of Building Materials and Components

Deliveries of Concrete Roofing Tiles in 2013Q2 increased (up 10.6%) on a year-on-year basis for the first time since 2011Q4, with deliveries in Q2 sufficient to cover roughly 4.5 million square metres of roof area.

Deliveries of Ready-mixed Concrete also rose, by 20.9%, in the year to 2013Q2. This was also the first year-on-year increase since 2011Q4. Comparing deliveries in 2012 with 2011, delivery volumes fell by 9.0%.

**Chart 8: Exports and Imports of Construction Materials, UK**

£million



Source: Table 14 Monthly Statistics of Building Materials and Components

Exports of construction materials rose by £112 million, on the quarter in 2013Q2 (to £1,474 million), a rise of 8.2%. Imports also rose, by £180 million (to £3,150 million), a 6.1% increase. As a result, the trade deficit widened by £68 million, to £1,676 million, in 2013Q2.

The increase in the trade deficit in 2013Q2 was largely due to a widening in the trade deficit in 'semi-manufactures' by £46 million. The trade deficit in 'products and components' also widened, by £21 million, as did 'raw materials', by £1 million.

**Table 2: Top-5 UK Exported and Imported Construction Materials in 2012**

£ million

Top-5 Exported Materials	Value (£ million)	Top-5 Imported Materials	Value (£ million)
Paints & Varnishes	630	Electrical Wires	1,381
Electrical Wires	512	Sawn Wood > 6mm thick	626
Lamps & Fittings	287	Lamps & Fittings	599
Air Conditioning Equip.	255	Central Heating Boilers	524
Plugs & Sockets	217	Air Conditioning Equip.	522

Source: Table 14 Monthly Statistics of Building Materials and Components

The top five exported materials in 2012 were Paints and Varnishes, Electrical Wires, Lamps & Fittings, Air Conditioning Equipment and Plugs & Sockets.

The top five imported construction materials in 2012 were Electrical Wires, Sawn Wood (thicker than 6mm), Lamps & Fittings, Central Heating Boilers and Air Conditioning Equipment.

**Table 3: UK Trade of Construction Materials with EU and Non-EU Countries, 2012**

£million (% of total trade in italics)

All Building Materials & Components	EU	Non-EU
Exports	3,349 <i>60%</i>	2,236 <i>40%</i>
Imports	7,465 <i>63%</i>	4,380 <i>37%</i>

In 2012, around 60% of all building material exports were from EU countries, while 63% of imports were to EU countries.

Source: Table 15 Monthly Statistics of Building Materials and Components

**Table 4: Top 5 UK Export and Import Markets for Construction Materials in 2012**

*£ million*

Top-5 Export Markets		Top-5 Import Markets	
Ireland	675	Germany	1,855
Germany	564	China	1,670
France	492	Italy	823
Netherlands	433	Spain	612
USA	364	Netherlands	575

The UK's largest export market for building materials was Ireland, followed by Germany, France, the Netherlands and the USA.

The largest import market was Germany, followed by China, Italy, Spain and the Netherlands.

The '[Rotterdam Effect](#)' (also known as the 'Antwerp Effect') may affect trade figures. This is explained in detail by [HM Revenue & Customs](#).

Source: HMRC Overseas Trade Statistics



## Economic background

The third estimate of GDP by the ONS on 26 September saw GDP rise by 0.7% on the quarter in 2013Q2, unrevised from the second estimate published in August. GDP increased by 1.3% when comparing 2013Q2 to the same quarter in the previous year. GDP has gradually increased since its lowest post-recession levels (seen in Q2 and Q3 of 2009) however it remains 3.3% below its pre-recession peak (in 2008Q1).

Although total GDP was unrevised, there was an upward revision to construction output between 2013Q1 and 2013Q2, where output is now estimated to have risen by 1.9% compared with the previous quarter and by 0.5% compared with a year earlier (revised from +1.4% and -0.5% respectively). Growth in services was unrevised at 0.6% between 2012Q1 and 2013Q2, the main driver of growth in the quarter. Industrial production was revised, showing growth of 0.8% over the same period (revised up from 0.6%).

The latest reports from the Bank of England regional agents suggested that private house building activity continued to increase between late July and late August. Activity in utilities and transport infrastructure was reportedly “relatively robust”. Public sector activity was said to be steady but private sector commercial development remained at low levels outside of London. The Markit/CIPS UK Construction PMI survey results presented similar messages. For August they reported a fourth consecutive monthly increase in construction output which was reportedly led by a surge in housing activity. Growth in civil engineering and commercial construction activity continued, according to their survey results.

Going forwards, Consensus Economics (which uses an average of private sector forecasts) upgraded GDP expectations for 2013 to 1.3% this month, the sixth upgrade in running months. Expectations for GDP in 2014 also rose, from 1.9% to 2.1%.

In August, the Construction Products Association (CPA) forecast a fall in construction output of 1.5% in 2013 (previously -2.1%) before output rebounds to positive growth of 2.2% in 2014 (previously +1.9%); each representing upgrades to their previous forecasts made in April. This growth is “expected to be driven primarily by private sector activity, coupled with a general improvement across the wider economy.” Construction output is also expected to grow in 2015 (+4.5%) and 2016 (+5.0%), with CPA expecting the recovery to be led by private housing and infrastructure. In July, Experian forecast a fall in construction output of 2.3% in 2013 (previously -2.6%) and growth of 1.0% in 2014 (previously +0.8%), citing the slightly better prospects for the UK economy as their reason for the upward revisions. However, Experian cut their forecast for 2015 from 3.0% to 2.5% growth, due to the uncertainty they see “around the timing of the start of main works on new nuclear build projects, or in fact whether they will begin in this forecast period at all.”

## Background notes

### Quality information for the Building Materials bulletin

1. The United Kingdom Statistics Authority has designated these statistics as National Statistics, in accordance with the Statistics and Registration Service Act 2007 and signifying compliance with the Code of Practice for Official Statistics.

Designation can be broadly interpreted to mean that the statistics:

- meet identified user needs;
- are well explained and readily accessible;
- are produced according to sound methods, and
- are managed impartially and objectively in the public interest.

Once statistics have been designated as National Statistics it is a statutory requirement that the Code of Practice shall continue to be observed. The full assessment [report](#), published on 22nd December 2011, can be found on the UK Statistics Authority website.

2. Quality issues related to the *Building Materials and Components* outputs are discussed in the review of the Building Material statistics that was carried out in 2010 by BIS's construction team. The review aimed to: ascertain user needs; examine whether existing data collection methodologies are fit for purpose; estimate compliance costs; assess compliance with the Code of Practice; and identify options for change.

The full [report](#) can be found on the BIS *Building Materials and Components* webpage.

Detailed information on data suppliers, coverage and data collection methodology can be found in sections 2.1-2.10. Quality issues (coverage and accuracy of sample panels, response rates, survey results processing, disclosure etc.) and potential measures that could be employed to improve the quality of the statistics are discussed in section 2.11 of the review. Users' views on the quality of the *Building Materials and Components* statistics are given in section 3.3.4. These are derived from a user survey carried out in early 2010, as part of the review (see section 3 for details).

3. Following the review, BIS acted on the recommendations including commissioning the Office for National Statistics Methodology Advisory Service (ONS/MAS) to address some of the recommendations from the 2010 review. In July 2011, MAS published their [interim report](#). In July 2012, MAS published their [final report](#). This will inform a full summary Quality Report that will be published by BIS shortly.
4. HM Revenue and Customs use administrative sources to produce Overseas Trade Statistics. A [Statement of Administrative Sources](#) used to compile construction material trade statistics is available on the BIS *Building Materials and Components* webpage:

Separately, HM Revenue and Customs also have a [Statement of Administrative Sources](#) which covers Overseas Trade Statistics.

5. [The pre-announcement of any major changes to samples or methodology](#) also details some methodological changes to the collection of data.

6. The following table gives a summary of response rates related to some of the latest survey results. Where the response rate is less than 100%, estimates are made for missing values.

Latest data used in September 2013 edition	Bulletin table number	Response rate
Quarterly Sand and Gravel	4, 5 & 6	85%
Quarterly Sand and Gravel – Land Won	4, 5 & 6	69%
Quarterly Sand and Gravel – Marine Dredged	4, 5 & 6	100%
Quarterly Slate	7	80%
Monthly Bricks Provisional data	9	96%
Monthly Bricks Final data	9 & 10	100%
Monthly Concrete Blocks Provisional data	11	100%
Monthly Concrete Blocks Final data	11	93%
Quarterly Concrete Blocks Final data	11 & 12	93%
Quarterly Roofing Tiles	13	100%

## Uses of the data

7. The *Building Materials and Components* statistics are used for a variety of purposes, including policy development and evaluation concerning the construction products industry, as well as monitoring market trends. In a wider context, the figures are regularly reported in the construction press to facilitate market analysis and business planning for its wide range of readers. The statistics are also increasingly used by financial institutions for assessing market information and industry trends. For more information on the uses of the Building Materials statistics, their usefulness to users and users' views on the quality of these statistics, see Section 3 of the *Building Materials and Components* [review](#).

## Related Statistics

8. [Construction Statistics: Sources and Outputs](#) lists the known sources of information available on the construction industry and their outputs. These include information on employees, employment, enterprises, output and new orders in the construction industry as well as the contribution of the industry to the economy. Related information, for example housing, is also included.
9. The [Construction Statistics Annual](#) brings together a wide range of statistics currently available on the construction industry from a variety of sources and provides a broad perspective on statistical trends in the construction industry, with some international comparisons.
10. In its monthly **Index of Production (IoP)** publication, the ONS publishes Gross Value Added (seasonally adjusted, UK) data for the following two industries:
- SIC 23.1-4/7-9 which includes the manufacture of bricks, tiles and other construction products.
  - SIC 23.5-6 industry which includes the manufacture of concrete, cement and other products for construction purposes.

These data are not directly comparable with the data in this bulletin, due to differences in coverage and methodology. They are nevertheless useful in illustrating the latest output trends of related construction materials as measured by the ONS.

The latest IoP data show that output in the SIC 23.1-4/7-9 industry rose by 0.2% in the year to July 2013. This was the second consecutive month in which output rose on this basis, following seventeenth successive declines on this basis, preceded by a 12-month period in which the sector recorded uninterrupted year-on-year growth. In 2012 as a whole, the industry contracted by 12.2%, down from an expansion of 7.0% in 2011. Monthly indices (2010=100) from March 2012 to July 2013 inclusively have been some of the lowest on record (since January 1997), with 18 of the 31 values below 100.0 featuring in this period (the lowest being in October 2012).

In the year to July 2013, output in the SIC 23.5-6 industry fell by 6.3%, the eleventh fall in twelve months on this basis, with 28 months in the last 36-month period seeing year-on-year declines. Monthly indices (2010=100) from January to June 2013 have seen the lowest monthly index values on record (since January 1997), with July 2013 the eighth lowest. In 2012 as a whole, the sector suffered a 14.7% decline in output, following a contraction of 6.3% in output recorded in 2011.

Turning to the **construction contracting sector**, the latest (seasonally adjusted) ONS data indicated that the volume of construction output rose 2.0% between the three months to July and the three months to April. Comparing the three months to July 2013 to the three months to July 2012, output rose 0.8%, with the rise largely driven by increases in new private housing and infrastructure output. A seasonally adjusted monthly series (introduced in July 2013) reported a 2.2% increase in output volumes between June and July, however ONS emphasise that “due to seasonal adjustment taking place on a short span of data points used to interpret the seasonal effects (43 months), there is potential for increased revisions until the seasonal pattern is established within the time series”. In 2012 as a whole, the construction sector shrank by 7.9%, more than offsetting growth of 2.3% achieved in 2011.

## Revisions

11. Our [revisions policy](#) can be found on the BIS Building Materials webpage.
12. [The pre-announcement of any major changes to samples or methodology](#) and [Summary of Revisions](#) give further information on revisions and other changes to data and can also be found on the BIS Building Materials webpage.

## Further information

The coverage of cement and cementitious statistics changed from UK to GB in 2002 due to data confidentiality issues in Northern Ireland as the number of manufacturers decreased. Where the coverage of figures for other building materials is limited to Great Britain (i.e. sales of sand and gravel, and production, deliveries and stocks of slate, clinker, bricks, concrete building blocks and concrete roofing tiles), no equivalent data are collected for Northern Ireland.

The most recently published bulletin and accompanying data tables can be found on BIS' *Building Materials and Components* [website](#)

Accompanying tables with data relating to 2011 are accessible from [this](#) link.

Accompanying tables for 2005 - 2010 are accessible from [this](#) link.

Requests for older data should be sent to [MaterialStats@bis.gsi.gov.uk](mailto:MaterialStats@bis.gsi.gov.uk)

Please send us any comments or feedback you may have about this commentary.

**Next publication:** 6 November 2013

**Statistical Contact:** James Liley  
Tel: +44 (0)207 215 6221  
Email: [MaterialStats@bis.gsi.gov.uk](mailto:MaterialStats@bis.gsi.gov.uk)

**Website:** BIS Building Materials Construction Statistics,  
<https://www.gov.uk/government/organisations/department-for-business-innovation-skills/series/building-materials-and-components-monthly-statistics-2012>

Department of Business of Business, Innovation & Skills.

[www.bis.gov.uk](http://www.bis.gov.uk)

First published October 2013.

© Crown copyright 2013

You may re-use this information (not including logos) free of charge in any format or medium, under the terms of the Open Government Licence. **To view this licence**, or write to the Information Policy Team, The National Archives, Kew, London TW9 4DU, or e-mail: [psi@nationalarchives.gsi.gov.uk](mailto:psi@nationalarchives.gsi.gov.uk).

URN BIS / 13 / P125j