

Work Programme Official Statistics to Sept 2013

Published: 19th Dec 2013

Frequency: Quarterly

Coverage: Great Britain

Theme: [People and Places](#)



Department
for Work &
Pensions

Issued by:

Information, Governance and
Security Directorate
Department for Work and
Pensions

Telephone:

Press Office: 0203 267 5129

Website:

www.dwp.gov.uk

Statistician:

Adam Pearce
Information, Governance and
Security Directorate
Department for Work and Pensions
Room BP5201
Benton Park Road
Longbenton
Newcastle-upon-Tyne
NE98 1YX

Telephone: 0191 216 8990

Email:

adam.s.pearce@dwp.gsi.gov.uk

Next publication:

20th March 2014

*If you have any comments or
suggestions regarding this
publication, please contact DWP via
stats-consultation@dwp.gsi.gov.uk.*

Introduction

Work Programme was launched throughout Great Britain in June 2011 and is part of a number of welfare to work reforms¹ aimed at getting unemployed people into sustained work. An overview of Work Programme can be found on page 2.

The Work programme uses private and public companies, called providers, to find work for claimants transferred to them from Jobcentre Plus at specified points in their claim². The providers are primarily paid for defined outcomes related to sustained employment.

Figures in this release give an overview of monthly intakes to the Programme tracked over time. They can be used to monitor the type and volume of individuals and outcomes achieved as defined in the payment model and contractual agreements.

A summary of the monthly volumes of outcomes over time, rather than by intake, is also presented with breakdowns by characteristics of the participants on the scheme and their status on the programme.

Statistics are primarily sourced from data originally collected via administrative systems. To reflect any updates, the full historical statistical series is refreshed with each release and so previous figures may be updated based on new data².

Key findings

By monthly intakes of Referrals

Overall the proportion of Job Outcome payments attained at the 12 month stage has increased steadily for monthly intakes since the start of the Programme, although for the most recent intakes this has seen a slight fall. By the 12 month stage 11.7% of the September 2012 intake had attained a Job Outcome. This was 8.4% for June 2011 intake and 13.0 % for June 2012.

Intakes since September 2012 have on average 3 times the proportion of individuals expected to require more assistance to find and stay in sustainable employment.

The earliest intakes continue to attain Job Outcome payments the longer they spend on the Programme. By the 24 month stage around 22% of each intake (June 2011 to September 2011) had achieved a Job Outcome payment.

Whilst the proportion of Job Outcome payments attained by monthly Jobseekers Allowance (JSA) intakes at the 12 month stage remain above those of the early Programme intakes, more recent intakes have seen a slight fall. Levels are currently around 3 times higher than new Employment and Support Allowance (ESA) intake which have remained stable at around 1 in 25.

By all Referrals from June 1 2011 to Sept 30 2013

1.41 million individuals have been Referred to the Work Programme. Around 1 in 6 of all Referrals who had spent sufficient time on the programme to do so, achieved a Job Outcome payment, with 208 thousand payments overall.

Two thirds of those were still in employment at the end of September 2013.

1.39 million Sustainment payments were made to providers for 188 thousand individual participants. To date almost 22 thousand claimants have stayed in sustained employment long enough to qualify for the maximum number of Sustainment payments possible on the scheme.

To date 219 thousand individuals have returned to Jobcentre Plus after completing 104 weeks on the scheme, with the proportion returning to Jobcentre Plus from each intake decreasing month on month.

¹ For more information on the full range of schemes see

<https://www.gov.uk/government/publications/employment-programme-official-statistics>

² For further information see Work Programme Official Statistics background information note accessed via: <https://www.gov.uk/government/organisations/department-for-work-pensions/series/work-programme-statistics--2>

Work Programme: overview

Referral

Jobcentre Plus **refer** Claimants to the Work Programme.

Claimants' circumstances dictate the entry point and the nature of participation.

Attachment

Providers contact the claimant and register an **attachment** to the Work Programme.

There are 18 Providers (private, public and voluntary and community sector organisations) holding 40 contracts.

Contracts are assessed in financial years against Minimum Performance Levels for three Payment Groups.

The average time for a referral to attach is currently 16 days. Approximately 2% never attach.

Jobcentre Plus **refer** JSA and ESA claimants at specified points in their claims. Incapacity Benefit and Income Support referrals are voluntary

Claimants are assigned to one of nine **Payment Groups** and randomly allocated to a Work Programme **Provider** in their area

An **Attachment Fee** is paid to the Provider at the point of engagement with different rates defined by the Payment group

Providers supply services aimed to help individuals find and stay in sustainable work.

Outcome Payments

Providers are paid for defined **outcomes**.

Outcome Payments are subject to validation procedures to ensure Providers are only paid for valid outcomes.

Job Outcome Payment

Following a defined period of continuous or cumulative spells in employment, the Provider will receive a **Job Outcome Payment**.

The time it takes to achieve a Job Outcome Payment is defined by the Payment Group.

Only one Job Outcome payment can be claimed per referral. There are no payments for job entry.

Sustainment Payments

Following a job outcome payment and after a further four continuous weeks in employment the provider will receive a **Sustainment payment**.

Subsequent sustainment outcomes can be claimed following further periods of four weeks continuous employment. The maximum number of Sustainment payments is defined by Payment Group.

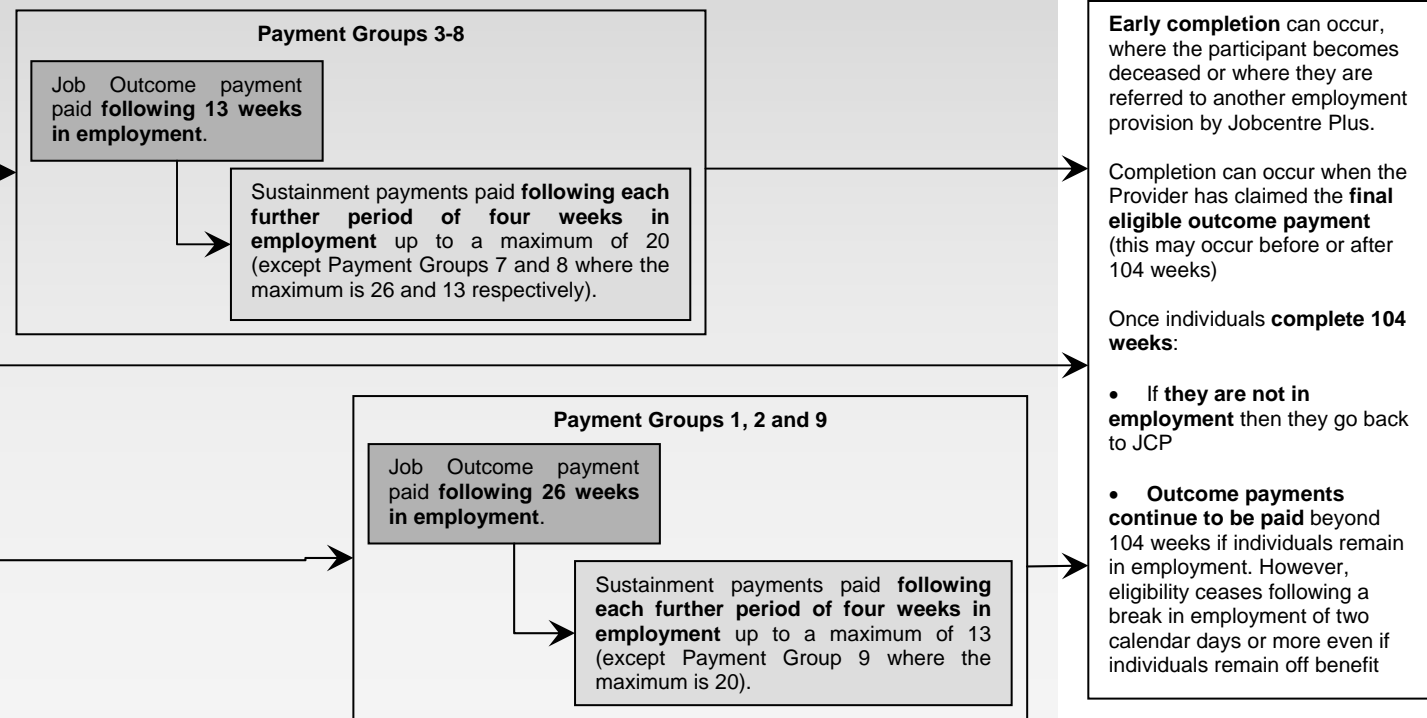
Breaks in employment of up to two calendar days will be accepted as long as the individual does not return to benefit. Gaps of any length are permitted between four week spells of employment.

Completion

Once referred, individuals remain on the Work Programme for an **allotted time of 104 weeks**, unless they complete early.

During this time participants may leave or change benefits or move into employment. Jobcentre Plus will continue to see them to check that they are meeting their conditions for claiming benefits (if applicable).

Participants cannot be re-referred to the Work Programme within their 104 week support period.



In this Summary

This Summary contains the latest Work Programme Official Statistics on Referrals, Attachments and validated Job Outcome and Sustainment payments to September 30th 2013 developed in accordance with the Code of Practice and supporting Principles.

Since Outcome Payments are paid following a defined period of employment, comparisons of total Outcome Payments with Referrals in the same period will include those who have not had long enough to achieve an Outcome payment. Hence the main focus of this summary (in section A) is comparing monthly intakes of Referrals that have had the same duration of support, an approach endorsed by the UK Statistics Authority.

To aid presentation in Payment Group (PG) charts, PGs 3, 4 and 9 are presented together as “other JSA” and PG 5, 7 and 8 presented together as “Other ESA/IB”. PG1 (JSA Claimants aged 18 to 24), PG2 (JSA Claimants aged 25 and over) and PG 6 (ESA new customers) are presented individually.

Further Work Programme Statistics

The DWP tabulation tool and data visualisation tool enable users to examine many more tables and interactive charts in greater detail than provided in this summary.

The full suite of statistics plus further detailed background information can be accessed here:
<https://www.gov.uk/government/organisations/department-for-work-pensions/series/work-programme-statistics--2>

New in this release

Published for the first time in this release are statistics on the average number of weeks off benefit Work Programme claimants have spent in the 24 months they have been on the programme.

The tabulation tool now also includes information on the current status of all Referrals, including those who have completed the Programme, allowing breakdown by month of Referral or month of Completion. An additional supplementary table is also included in this statistical summary with plans to develop this into the body of the summary in future releases

Future Releases

The next release will be on 20th March 2014 and contain data to 31st December 2013.

DWP will publish the results of the consultation, which closed on the 22nd November, in the new year. Future releases will incorporate developments resulting from the consultation, in particular around Sustainment Payments.

Table of Contents

1. Official Statistics and commentary	4
A. Analysis by monthly intakes of referrals	
A1. Referrals.....	4
A2. Job Outcome payments made to providers.....	5
A3. Job Outcome payments by Payment Group.....	6
A4. Sustainment payments made to providers.....	7
A5. i) Benefit status analysis: Break in benefit.....	8
ii) Benefit status analysis: Average No of weeks off benefit.....	9
B. Analysis of all referrals	
B1. Status of all Work Programme Referrals.....	10
B2. Outcome payments made to providers: Time Series....	11
B3. Outcome payments made to providers: Further Sustainment analysis.....	12
B4. Contracts: Referrals with 12 months support.....	13
B5. Personal Characteristics and Geography.....	14
2. Supplementary Tables.....	16
C1. Supplementary Tables on monthly intake (cohort) of Referrals analysis.....	16
C2. Supplementary Tables showing volumes of Work Programme Referrals, Attachments, Job Outcome payments and Sustainment Payments.....	21
C3. Supplementary Tables of characteristics.....	22
3. Notes.....	32

A. Analysis by monthly intakes of Referrals

A1. Referrals

Chart 1a: Referrals to the Work Programme by month: to end of September 2013

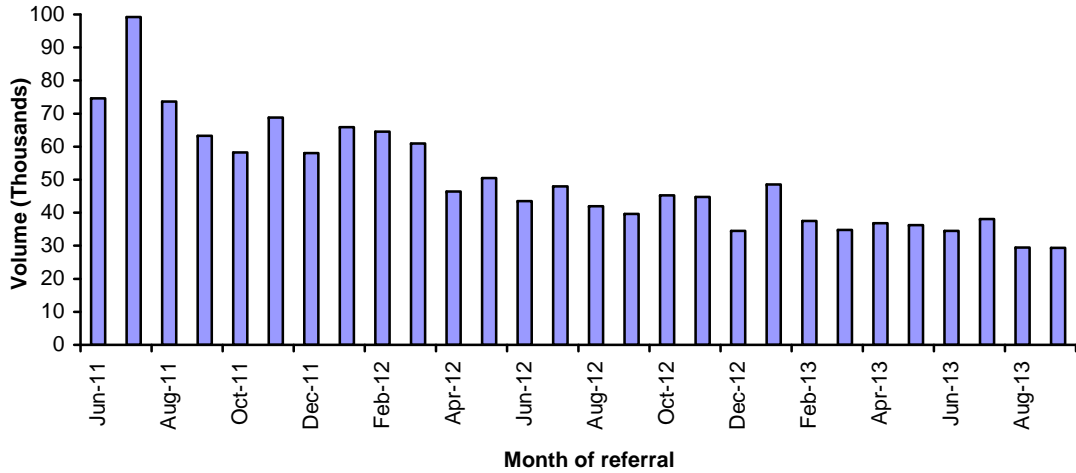
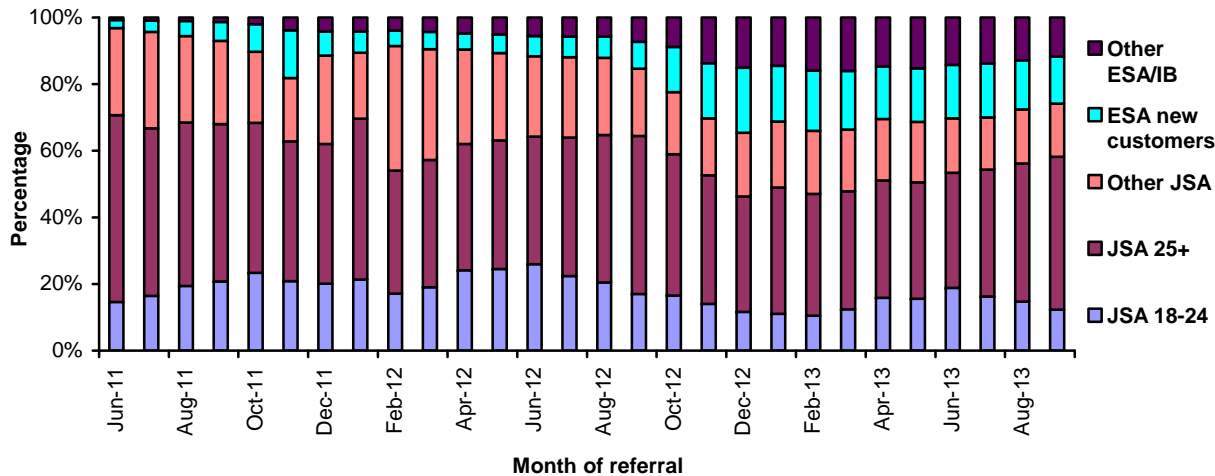


Chart 1b: Referrals to the Work Programme by Payment Group: to end of September 2013



Key messages

- Monthly volumes of Referrals show a continuing downward trend.
- Later intakes contain a higher proportion of individuals expected to require more support and assistance.

Chart 1a shows intake to the Work Programme generally decreasing each month since June/July 2011 (when Flexible New Deal participants were transferred to the Programme). This would be expected since individuals can only be referred to the scheme once. Between Oct 11 and Feb 12 there were a number of changes to access to the programme² which saw an increase in intake.

Since individuals generally remain on the Work Programme for 104 weeks, the overall number being supported will have increased month on month until late May 2013. At which point the first intake began to complete the Programme.

There were 74,630 Referrals in June 2011, compared to 39,680 in September 2012 and 29,380 in September 2013 (see **Supplementary table 2.6** in Section C2 for full data).

The series is also affected by the number of working days in each month. For example, reduced Referrals in December 2011 and 2012 are a result of the public holidays in these months.

Chart 1b shows the Payment Group composition of each monthly intake. The change over time reflects the roll out activity, changes in access to the programme and JSA seasonality.

Monthly intakes in the 12 months to September 2013 include a higher proportion of individuals expected to require more assistance to find and stay in sustainable employment.

This reflects changes in access to the Programme, especially for ESA claimants including the introduction of information sessions for potential ESA volunteers, a Jobcentre Plus exercise to identify eligible ESA Claimants who had not been referred to the Programme and the immediate referral of people expected to be fit for work within 6 months from October 2011².

For example 3% of the June 2011 monthly intake were from an ESA group compared to over a quarter of the September 2013 intake. Although more recently this proportion has slightly decreased.

A2. Job Outcome payments made to providers

Chart 2a: Percentage of cumulative Job Outcome payments achieved by monthly intakes in months following Referral

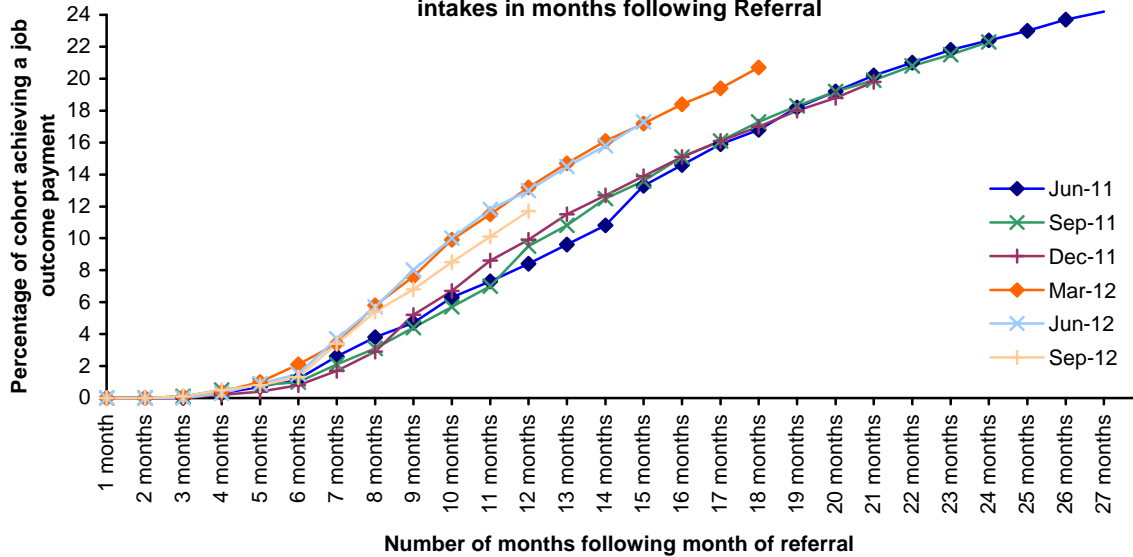
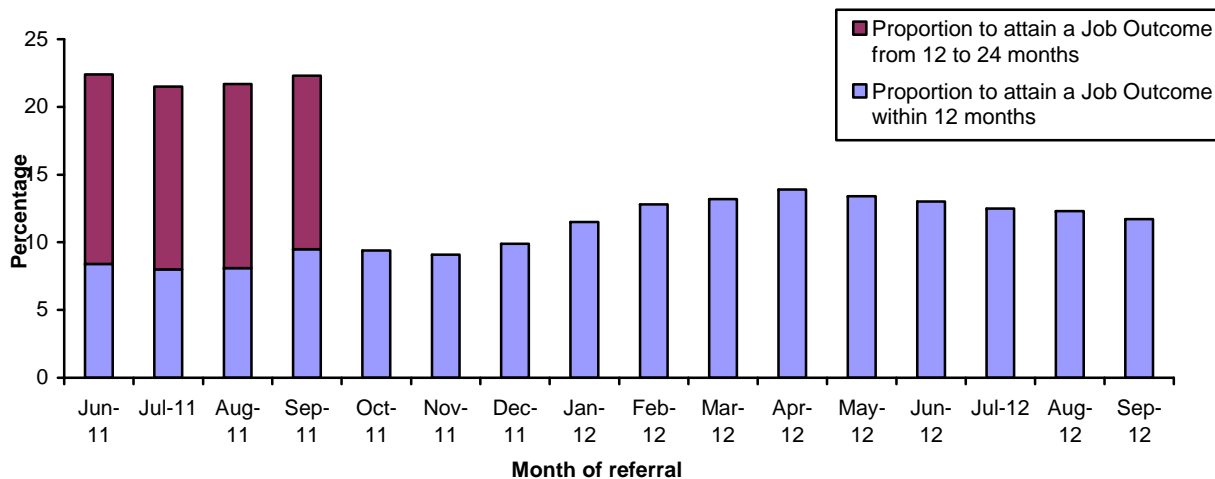


Chart 2b: Proportion of monthly intakes of referrals for whom providers were paid a Job Outcome payment within 12 and 24 months following referral



Key messages

- Monthly intakes continue to attain Job Outcome payments the longer they spend on the Programme.
- Overall the proportion attaining a Job Outcome payment by the 12 month stage has improved steadily since the start of the Programme although more recent intakes have seen a slight fall.
- For each intake to have reached 24 months on the scheme around 22% achieve Job Outcome payments within that time.

When tracking Job Outcome payments for a particular monthly intake over time, it is important to note that support to find and stay in sustainable employment will continue to be required for previous intakes as well as for subsequent intakes joining the scheme.

Chart 2a tracks the proportion of monthly intakes achieving a Job Outcome payment over time. Every fourth monthly intake is presented, see **Supplementary table 2.1** for full data.

Each monthly intake continues to show an increasing proportion of individuals attaining a Job Outcome payment the longer they are on the Programme. Approaching a quarter of the first intake in June 2011 attained a Job Outcome payment by September 2013, compared to less than one in twenty after nine months support.

Chart 2b (see also **Supplementary table 2.1**) presents the proportion of monthly Referrals for whom providers were paid a Job Outcome payment within the following 12 (and 24) months.

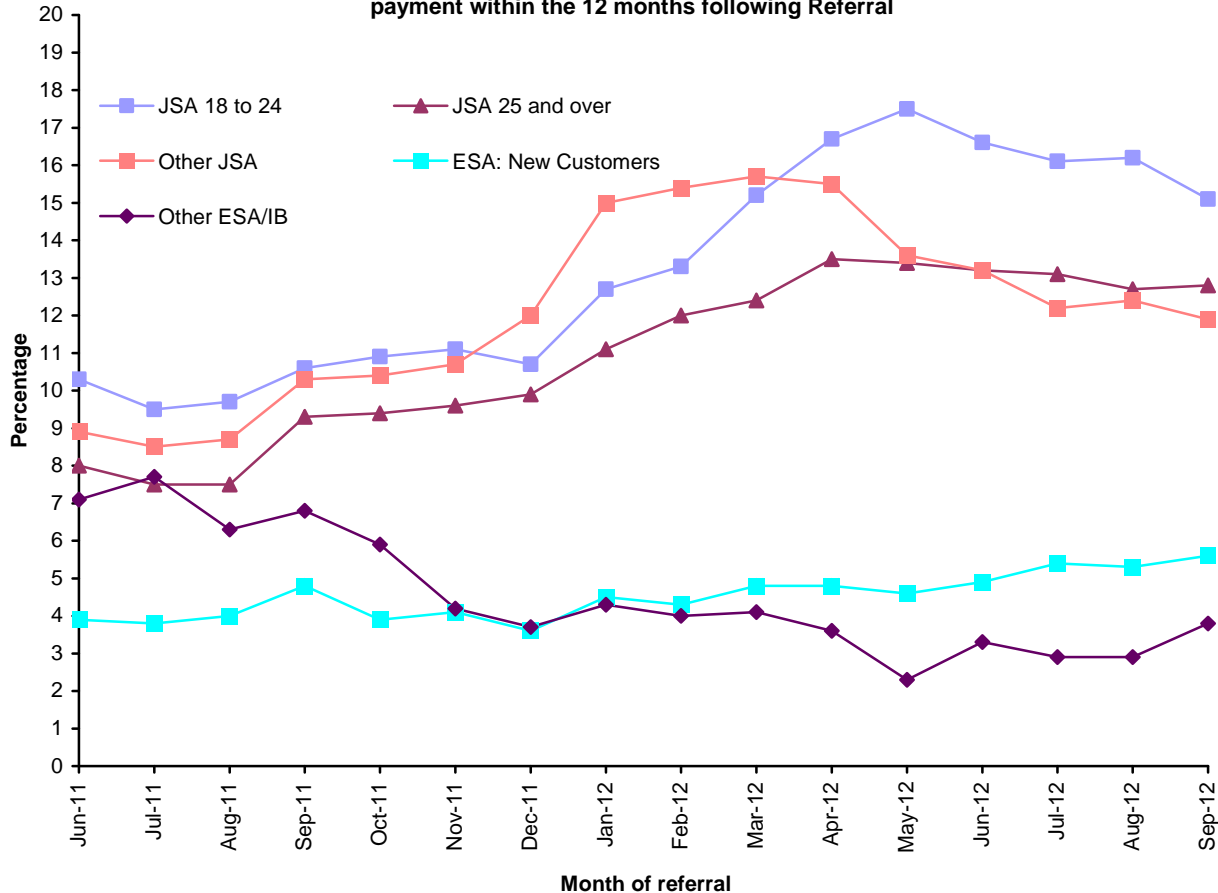
Overall the proportion has increased steadily since the start of the Programme although for more recent intakes it has fallen slightly. By the 12 month stage the proportion was 12.5%, 12.3% and 11.7% of the July, August and September 2012 intakes respectively.

The total number of individuals supported by the Work Programme peaked at the end of May 2013, nine months into the tracking period of the September 2012 intake. In addition to these high volumes, each intake during this period had on average three times the proportion of ESA referrals than the pre September 2012 intakes.

Each intake to reach 24 months on the Programme has similar proportions of claimants achieving Job Outcome payments within that time. For the September 2011 intake this was 22.3%, compared to 22.4% of claimants for the June 2011 intake.

A3. Job Outcome Payments by Payment Group

Chart 3: Percentage of Payment Group for monthly intakes achieving a Job Outcome payment within the 12 months following Referral



Key messages

- The proportion of the Employment and Support Allowance (ESA) New Customers intake group attaining a Job Outcome payment within a year has remained fairly constant at around 1 in 25.
- For Jobseekers Allowance (JSA) groups this proportion is currently around 3 times higher. More recent monthly intakes for JSA groups have attained higher proportions of Job Outcome payments than the earliest JSA intakes with 12 months support. However the last 6 months has seen each JSA group either level off or show a decrease.

Chart 3 (see also **Supplementary table 2.9** in Section C3) shows, for each monthly intake, the percentage of each Payment Group for whom providers were paid a Job Outcome payment within 12 months following referral.

Until the last two quarters, the proportion of JSA intake groups achieving a Job Outcome payment within a year has increased month to month. Whilst levels remain above those of the early Programme intake, the last two quarters show a decrease in these levels.

For the September 2012 JSA intake, the most recent intake that has spent a year on the Programme, the proportions are 15.1% of JSA 18-24 year olds, 12.8% of the JSA group aged 25 and over and 11.9% for the other JSA group. This compares with 10.3%, 8.0% and 8.9% respectively for the June 2011 intake.

For ESA, around 1 in 25 of each monthly intake of ESA new claimants attained a Job Outcome payment within a year. This level has remained stable for each intake.

Prior to November 2011, a higher proportion of the intake from other ESA/IB groups attained a Job Outcome payment within a year. More recently this the proportion has dropped to below that of the ESA new customers. The initial higher level is likely a result of the comparatively smaller early intake compared to those from November onwards. Intake from other ESA/IB was 560 in June 2011 and over four times that level in September 2012 at 2,890 (see **Supplementary table 2.10C** in Section C3). This increase coincides with the changes in access to the Programme discussed in section A1.

A4. Sustainment payments made to providers

Chart 4a: Proportion of monthly Referrals attaining Sustainment payments by number attained: to end of September 2013

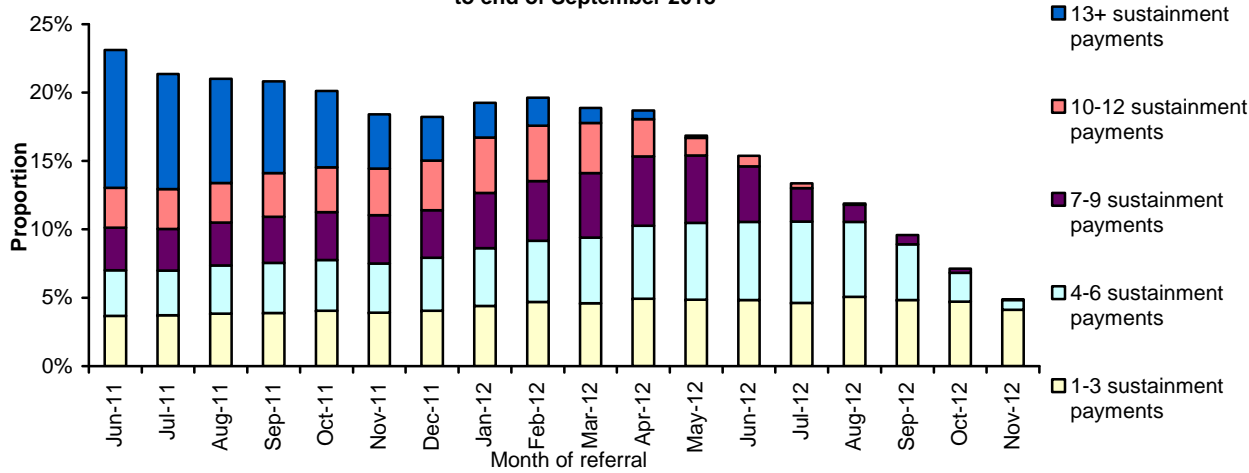
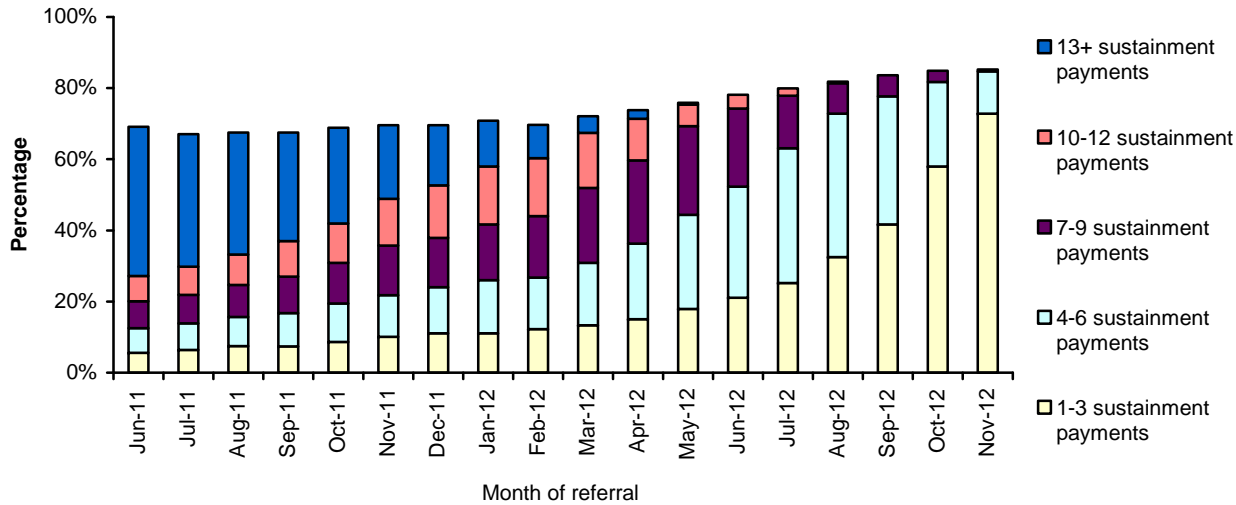


Chart 4b: Proportion of each monthly intake of referrals to achieve the maximum number of Sustainment payments possible following a Job Outcome Payment: to end of September 2013, broken down by number of Sustainment payments achieved



Key messages

- Earlier intakes generally have a higher proportion attaining Sustainment payments and higher proportions with larger numbers of payments to providers.

Comparing Sustainment payments for monthly intakes is difficult for this relatively early data series. Reasonable and standard amounts of time should be allowed both for the initial job outcome payment to be attained and for subsequent Sustainment payments to be tracked.

The DWP consultation on future plans which included proposals for Sustainment payment measures has now closed. The outcome will be announced in a public response to the consultation in the new year. Future releases will incorporate developments resulting from the consultation, in particular around Sustainment Payments measures.

Chart 4a (see also **Supplementary table 2.4** in Section C1) shows for each monthly intake, the proportion with at least one Sustainment payment up to the end of September 2013, broken down by the number of payments.

Earlier intakes have a higher proportion attaining Sustainment payments and higher proportions with larger numbers of payments than later intakes. This is intuitive as earlier intakes have had a longer period of support and more opportunity to attain Outcome payments.

Chart 4b (see also **Supplementary table 2.5** in Section C1) presents the proportion of each monthly intake that achieved all the Sustainment payments they could to the end of September 2013, broken down by the number of payments.

In each of the intakes, over 2/3rds, attained all possible Sustainment payments, following a Job Outcome, to the end of September 2013. Whilst the number of payments achieved is generally higher for earlier intakes, a lower overall proportion attained all the Sustainment payments compared to more recent intake. Again this is intuitive as earlier intakes have had more opportunity to attain Outcome payments than later intakes. They will also have had more time for a break in employment to occur.

A5. i) Benefit status analysis: Breaks in benefit after 12 months

Table 1.1: Proportion of monthly intakes to the Work Programme who spent time off benefit in the 12 months following referral

Intake month	Volume of intake (thousand)	% with a break in benefit	% who are off benefit at the end of 12 month period	% with a 13 week spell off benefit	% with a 26 week spell off benefit
Jun 11	74.63	50.2	27.4	25.8	16.3
July 11	99.21	49.7	26.2	24.6	15.0
Aug 11	73.68	51.3	27.4	25.3	15.2
Sept 11	63.28	51.9	28.4	25.5	15.1
Oct 11	58.27	52.5	29.0	25.9	15.2
Nov 11	68.77	49.5	27.5	24.1	13.9
Dec 11	58.08	50.9	28.0	25.7	14.8
Jan 12	65.89	54.2	29.6	29.2	17.1
Feb 12	64.58	55.4	30.2	30.4	17.7
Mar 12	60.94	58.3	32.5	31.9	20.0
Apr 12	46.37	61.7	35.5	34.9	22.4
May 12	50.49	61.8	36.1	34.5	22.6
Jun 12	43.54	61.3	36.2	34.3	21.7
Jul 12	47.95	61.1	36.8	34.2	21.6
Aug 12	41.97	60.8	37.6	33.8	20.8
Sep 12	39.68	60.0	37.2	32.9	20.0

Key messages

- Whilst more recent intakes to the programme spent more time off benefit, in the 12 months following Referral, than those referred in the early months of the scheme; for intake in the Programme's second 12 months this proportion has been decreasing.

Table 1.1 examines break in benefit for each monthly intake of Referrals that has received 12 months support on the Programme. The most recent monthly intakes have larger proportions with any break in benefit within those 12 months. For example for the July, August, September 2012 intake of Referrals – 61.1%, 60.8% and 60.0% had a break in benefit compared with 50.2% of those referred in June 2011. Although the proportion has slightly decreased for successive intakes during the second twelve months of the Programme.

The proportion with a continuous break in benefit of 13 and 26 weeks within the 12 months is also higher for later monthly intakes. For example for the September 2012 intake of Referrals 32.9% and 20.0% had a continuous break in benefit of 13 and 26 weeks compared with 25.8% and 16.3% for the June 2011 intake. Again, for successive intakes during the second twelve months of the Programme the proportions with 13/26 week breaks in benefit show a slight decrease.

The proportion of monthly intakes that are off benefit at the end of the 12 month period is generally increasing month on month. There is a large jump in the proportion for the monthly intakes around the April 2012 intake. For example, 27.4% of June 2011 intake was off at this point compared to 32.5% at March 2012, 35.5% at April 2012 and 37.2% at September 2012.

Whilst these figures represent evidence of movement off benefit, they do not, in isolation, provide direct evidence of movement into sustained employment or link with Job Outcome payments. This is because the breaks in benefit tables track continuous spells off benefit whereas providers can claim a Job Outcome payment based on the total time employed, irrespective of the number of spells.

A5. ii) Benefit status analysis: Average number of weeks off benefit after 24 weeks

Table 1.2: Average number of weeks spent off benefit by claimants in each monthly intake to reach 2 years *Percentage*

Intake month	Average number of weeks a claimant has spent off benefit in 2 years
Jun 11	26.2
July 11	25.3
Aug 11	25.9
Sept 11	26.1

Key messages

- On average, claimants referred up to the end of September 2011 spent a quarter of their allotted time on the programme off benefit.
- The average number of weeks off benefit has very little variation in the first 4 cohorts to reach 24 months on the programme.

Table 1.2 shows, for each monthly intake, the average number of weeks claimants spent off benefit in the 104 weeks on the programme. This shows that for the four intakes to have spent 24 months on the programme there is little variation from intake to intake. On average claimants which were referred up to the end of September 2011, spent a quarter of their time on the programme not claiming benefit.

B. Analysis of all Referrals

B1. Status of all Work Programme Referrals

Table 1.3: The status of all Work Programme Referrals as at September 2013

Thousands

	Total	Completed Early	Completed allotted time (104 weeks) ³			Completed: Maximum Outcome payments attained ⁴	Still on the scheme	Never Attached
			Returned to Jobcentre Plus at 104 weeks	Returned to Jobcentre Plus post 104 weeks	Provider still receiving Outcome payments			
Referrals	1407.12	2.13	218.56	12.54	65.52	21.78	1082.38	4.20
Of which								
Job Outcome payments	207.95	0.15	14.68	3.90	39.36	21.07	128.79	-
Of which Sustainment Payments								
1-4	62.64	0.04	6.02	0.91	8.60	-	47.06	-
5-8	50.32	0.03	3.32	0.67	9.85	-	36.45	-
9-12	36.37	0.03	1.88	0.48	10.32	-	23.67	-
13+	38.36	0.01	0.50	1.57	9.23	21.78	5.26	-

³ This will include people referred up till the 4th October 2011 as claimants are on the programme for 104 weeks, slightly less than 2 years.

⁴ Total individuals for Referrals and Sustainment payments will not equal the total number of individuals for Job Outcome payments due to differences in the validation procedure. For more information please see the background information note on the Work Programme home page.

Key messages

- To date approaching 22 thousand claimants have stayed in sustained employment long enough to qualify for the maximum number of Sustainment payments possible.
- To date 219 thousand claimants returned to Jobcentre Plus after completing 104 weeks on the scheme, with nearly 15 thousand of these being in sustained employment for 3 or 6 months within the 104 weeks.
- More recent intakes to complete 104 weeks of support have a decreased proportion returning to Jobcentre Plus.

The large majority of the referrals to the programme, over 1 million, are still on the scheme as most Participants have not completed their allotted time on the Programme.

Almost 22 thousand claimants achieved the maximum number of Sustainment payments allowable on the scheme. A proportion of these achieved this within 104 weeks of referral and left the scheme, with the others remaining in employment after the 104 week point.

2 thousand claimants left the programme early, either due to being referred to another scheme or in a minority of cases due to death.

219 thousand claimants, who completed 104 weeks of support on the programme, were on benefit at that point and returned to Jobcentre Plus. **Supplementary table 2.6** in section C shows the proportion of each monthly cohort by status at September 2013. It shows that the more recent intakes to complete 104 weeks of support have a decreased proportion returning to Jobcentre Plus.

A further 13 thousand claimants were not on benefit after completing 104 weeks of support but did return to benefit after this point, without achieving the maximum number of Sustainment payments.

Nearly 66 thousand claimants completed the 104 weeks of support and are still in employment, with their providers still receiving outcome payments. Eligibility to further payments for these individuals will cease following a break in employment.

Out of the 323 thousand people who are no longer supported by the programme and who did not complete early, 1.3% (4 thousand) never attached to a provider in the 104 weeks from Referral.

B2. Outcome Payments made to providers: Time Series

Chart 5a: Numbers of Job Outcome payments paid to providers by month: to end of September 2013

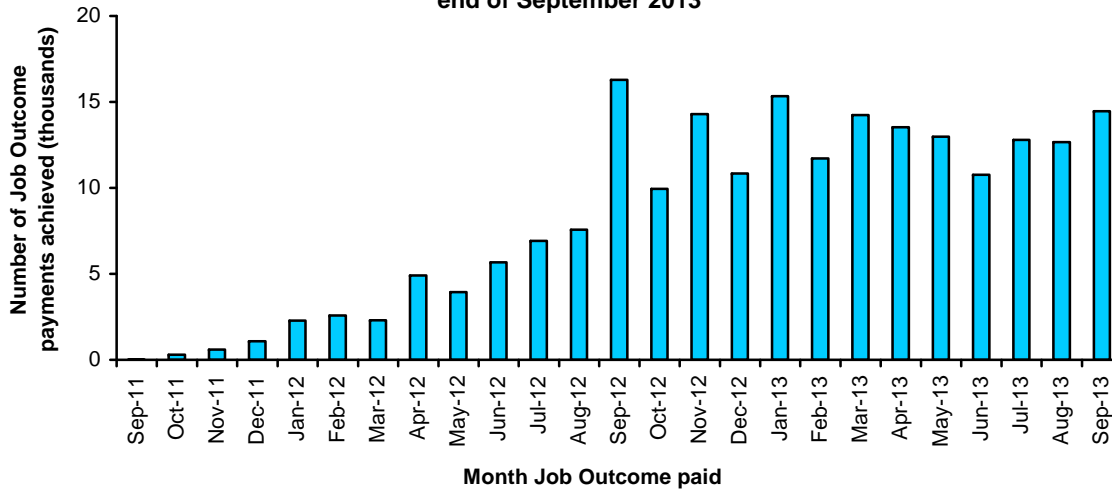
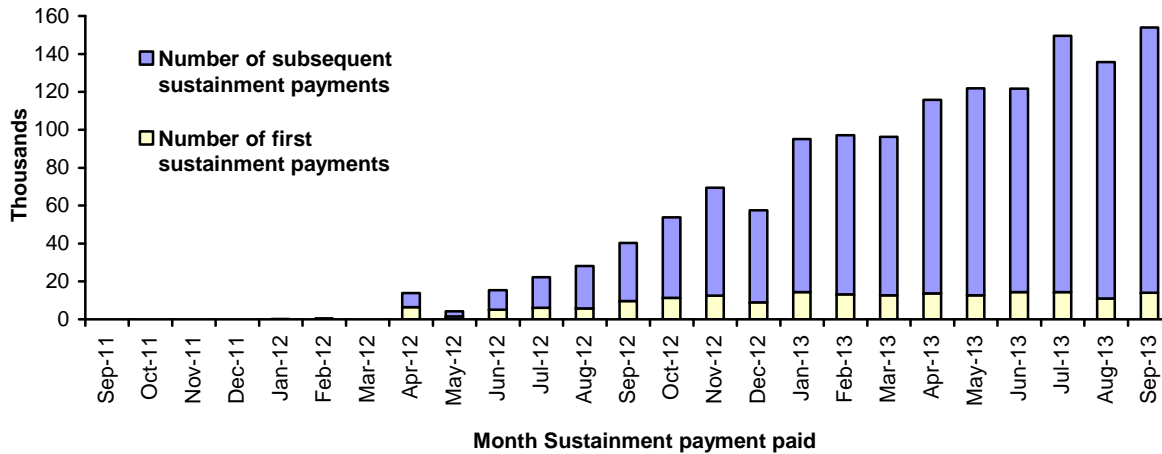


Chart 5b: Numbers of Sustainment payments paid to providers by month: to end of September 2013



Key messages

- Numbers of Job Outcome payments generally increase month on month till September 2012 and fluctuate thereafter.
- Numbers of Sustainment payments made to providers each month have generally increased since the start of the scheme.

Chart 5a (see also **Supplementary table 2.7** in Section C2) shows the number of Job Outcome payments made to Work Programme providers each month.

In total up to 30th September 2013 providers have received almost 208 thousand Job Outcome payments. In the month of September 2013 there were over 14 thousand Job Outcomes payments made to providers.

The month of payment is affected by the number of working days in each month. This is likely to explain the reduction in monthly Job Outcomes payments in December (and corresponding increase in January) as a result of the public holidays. The month of payment is also affected by Operational activity during the schemes infancy. The spike in September 2012 was due to around 8,000 Job Outcomes which were released for payment having initially failed automated checks and been subject to further validation².

Chart 5b (see also **Supplementary table 2.7** in Section C2) shows the number of Sustainment payments paid to providers each month, broken down by first and subsequent payments attained by an individual.

The number of Sustainment payments paid steadily increased from when they could first be paid in September 2011. By September 2013 there had been 1.4 million Sustainment payments made to providers, with 188 thousand individual Participants attaining at least one Sustainment payment.

Monthly fluctuations in the Sustainment payment time series can also be attributed to the same effects that affect the Job Outcome time series.

B3. Outcome payments paid to providers: Further Sustainment analysis

Table 1.4: Number of Sustainment payments achieved by Participants, following a Job Outcome payment, on the Work Programme: June 2011 to September 2013

Defined Job Outcome period	Number of Sustainment payments paid to providers	Number of Participants	Numbers of Participants with Sustainment payments by the number of Sustainment payments paid			
			1-4	5-8	9-12	13+
			All	1392.30	187.69	62.64
3 month	444.05	55.4	19.68	12.25	10.76	12.71
6 month	948.26	132.3	42.95	38.08	25.62	25.65

Thousands

Table 1.5: Number of Referrals to the Work Programme with sufficient time following a Job Outcome payment to achieve at least one Sustainment payment, by the number they achieved and whether it was the maximum possible in the period covered by the statistics (end of September 2013)

Maximum number of Sustainment payments achieved	Number of Referrals who could have achieved maximum number of Sustainment payments	Number of Referrals that did achieve the maximum number of Sustainment payments	Proportion of Referrals, who could have achieved the maximum number of sustainment payments, that did achieve the maximum number
Total	199.22	132.67	66.6%
1	11.16	9.47	84.9%
2	9.55	7.79	81.5%
3	11.52	9.55	82.9%
4	12.68	9.96	78.6%
5	12.38	9.35	75.5%
6	12.15	8.96	73.7%
7	11.92	8.36	70.1%
8	12.12	8.21	67.7%
9	12.09	7.62	63.0%
10	11.44	6.76	59.1%
11	10.36	5.88	56.8%
12	10.71	5.20	48.5%
13+	61.14	35.56	58.2%

Thousands

Key messages

- Over 60% of Referrals who achieve a Job Outcome payment go on to claim 5 or more Sustainment payments: to end of September 2013.
- Two thirds of claimants went on to achieve the maximum possible number of Sustainment payments in the period covered by this release.

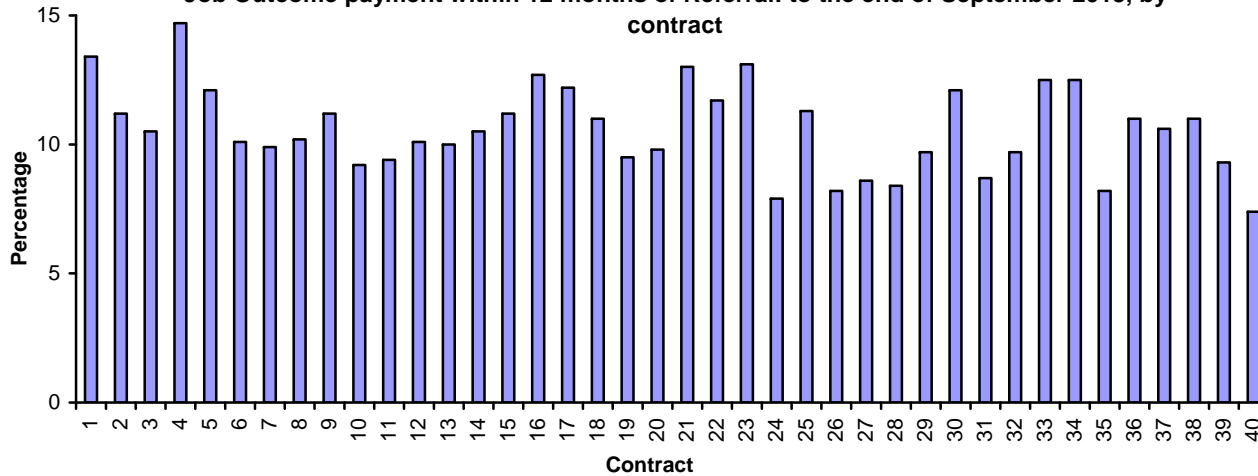
Table 1.4 (see also **Supplementary table 2.8** in Section C2) shows the breakdown by numbers of Sustainment payments achieved by individuals. 61% (125 thousand) of the individuals that achieve at least one Sustainment payment attained five or more by end of September 2013.

Table 1.5 shows the number of individual Referrals who achieve the maximum number of Sustainment payments that they could up to the end of September 2013, broken down by number of Sustainment payments.

Overall, for all Referrals with sufficient time following a Job Outcome payment, 66.6% of individuals attained the maximum possible number of Sustainment payments they could by 30th September 2013. Of those 61 thousand Referrals who had the opportunity to attain 13 or more Sustainment payments following a Job Outcome payment, over half (58.2%) did so.

B4. Contracts: Referrals with 12 months support

Chart 6a: Proportion referrals with 12 months Work Programme support that achieved a Job Outcome payment within 12 months of Referral: to the end of September 2013, by contract



Key messages

- Over 1 in 10 Referrals of all Referrals who had a least 12 months support achieved a Job Outcome payment.

Chart 6a (see also **Supplementary table 2.17** in section C3) shows the proportion of all Referrals who have received at least 12 months of support on the Work Programme and have achieved a Job Outcome payment within 12 months.

There is a distinct variation across contracts ranging from 7.4% to 14.7% across providers.

For all monthly intakes of Referrals who have received at least 12 months support on the Work Programme, 10.7% have achieved a Job Outcome payment within a year of Referral.

Legend for chart 8a

- 1: East of England: Ingeus UK LTD
- 2: East of England: Seetec
- 3: East Midlands: A4e Ltd
- 4: East Midlands: Ingeus UK Ltd
- 5: West London: Ingeus UK Ltd
- 6: West London: Maximus Emp UK Ltd
- 7: West London: Reed in Partnership Ltd
- 8: East London: A4e Ltd
- 9: East London: Careers Development Group Ltd
- 10: East London: Seetec
- 11: North East: Avanta Enterprise Ltd
- 12: North East: Ingeus UK Ltd
- 13: Merseyside, Halton, Cumbria, Lancs: A4e Ltd
- 14: Merseyside, Halton, Cumbria, Lancs: Ingeus UK LTD
- 15: Manchester, Cheshire, Warrington: Avanta Enterprise Ltd
- 16: Manchester, Cheshire, Warrington: G4S
- 17: Manchester, Cheshire, Warrington: Seetec
- 18: Scotland: Ingeus UK LTD
- 19: Scotland: Working Links (Emp) Ltd
- 20: Thames Valley, Hamps, Isle of Wight: A4e Ltd
- 21: Thames Valley, Hamps, Isle of Wight: Maximus Emp UK Ltd
- 22: Surrey, Sussex, Kent: Avanta Enterprise Ltd
- 23: Surrey, Sussex, Kent: G4S
- 24: Devon, Cornwall, Dorset, Somerset: Prospects Serv Ltd
- 25: Devon, Cornwall, Dorset, Somerset: Working Links (Emp) Ltd
- 26: Glouc, Wilts, Swindon, West of England: JHP Group Ltd
- 27: Glouc, Wilts, Swindon, West of England: Rehab jobfit LLP
- 28: Wales: Rehab jobfit LLP
- 29: Wales: Working Links (Emp) Ltd
- 30: Birmingham, Solihull, Black Country: EOS-Works Ltd
- 31: Birmingham, Solihull, Black Country: Corp. of Newc. College
- 32: Birmingham, Solihull, Black Country: Pertemps
- 33: Coventry, Warwicks, Staffs, the Marches: esg. Holdings Ltd
- 34: Coventry, Warwicks, Staffs, the Marches: Serco Ltd
- 35: West Yorkshire: Interserve Working Futures
- 36: West Yorkshire: Ingeus UK LTD
- 37: South Yorkshire: A4e Ltd
- 38: South Yorkshire: Serco Ltd
- 39: NE Yorks, The Humber: G4S
- 40: NE Yorks, The Humber: Corp. of Newc. College

B5. Personal Characteristics and Geography

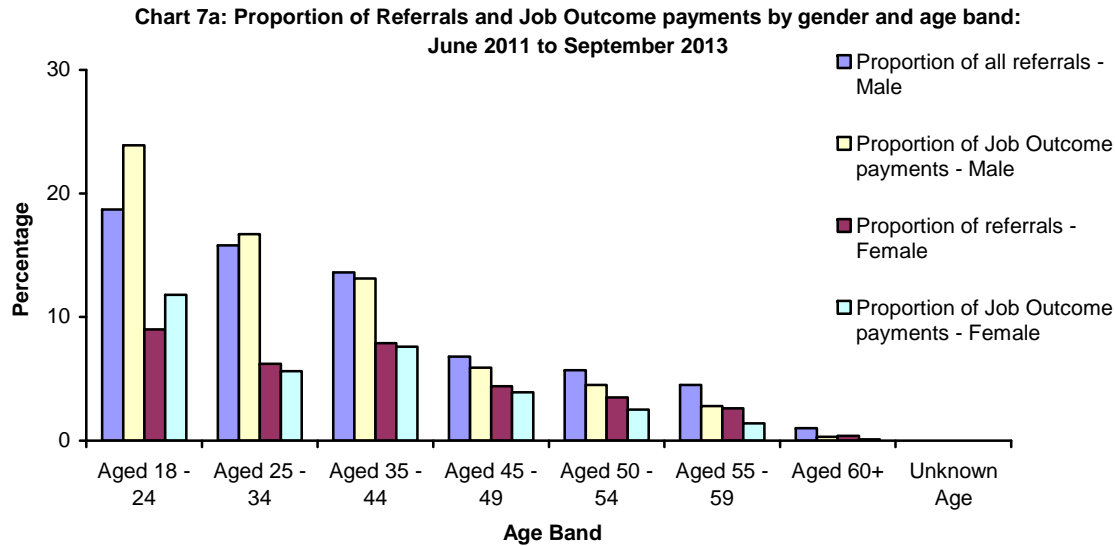


Table 1.6: Number of Referrals and Attachments to the Work Programme, the number of Participants who have qualified for a Job Outcome payment and the number of Participants who have qualified for at least one Sustainment payment - Region by Ethnicity Summary: June 2011 to September 2013

Thousands

	Referrals	Attachments	Job Outcome payments	Number of individuals who achieved at least 1 Sustainment payment
Total	1407.12	1364.17	207.95	187.69
White	1109.91	1076.00	162.41	145.87
Mixed	27.46	26.33	4.02	3.65
Asian or Asian British	76.43	74.31	11.88	10.96
Black or Black British	96.93	93.98	14.97	13.74
Chinese or Other Ethnic Group	31.66	30.65	4.47	4.11
Prefer Not to Say	64.44	62.62	10.19	9.35
Unknown	0.28	0.27	0.02	0.02

Key messages

- The gender, age, ethnicity and regional split of claimants being referred to the Work Programme are broadly in line with the benefits from which claimants are referred.
- The proportion of Work Programme claimants who achieve a Job Outcome payment split by gender, ethnicity and region are broadly in line with those referred to the scheme. However a higher proportion of younger claimants go on to achieve a Job Outcome compare to those that are referred.

Chart 7a (see also **Supplementary table 2.12** in section C3) shows the proportion of referrals and Job Outcome payments broken down by age and gender.

Just over two thirds of Work Programme Referrals and Job Outcome payments are for male claimants. This is a similar proportion to those claiming JSA. A little over half of ESA Claimants are male.

Half of Referrals are under the age of 34 which is consistent with the proportion of JSA claimants as a whole. A little over a quarter of ESA claimants are under 34. Comparatively more younger people achieve a Job Outcome than are referred. For example 28% of all Referrals are aged 18-24 but the same age range is responsible for 36% of all Job Outcome payments paid to providers.

Table 1.6 shows the ethnicity summary breakdown Work Programme Referrals and Job Outcome payments. Almost 8 in 10 of Referrals are from Participants who view their ethnicity as “white”; roughly 1 in 15 as “Black/Black British” and just over 1 in 20 as “Asian/Asian British”. These proportions are consistent with the proportion of JSA claimants as a whole.

The proportion of Job Outcome payments achieved across the ethnicity groups is consistent with the proportion of Referrals from each of these groups. For example the largest proportion of Job Outcomes payments was achieved by participants who viewed their ethnicity as ‘White’ which was comparable with the proportion of Referrals in this group.

Chart 7b: Proportion of referrals and job outcome payments by region: June 2011 to September 2013

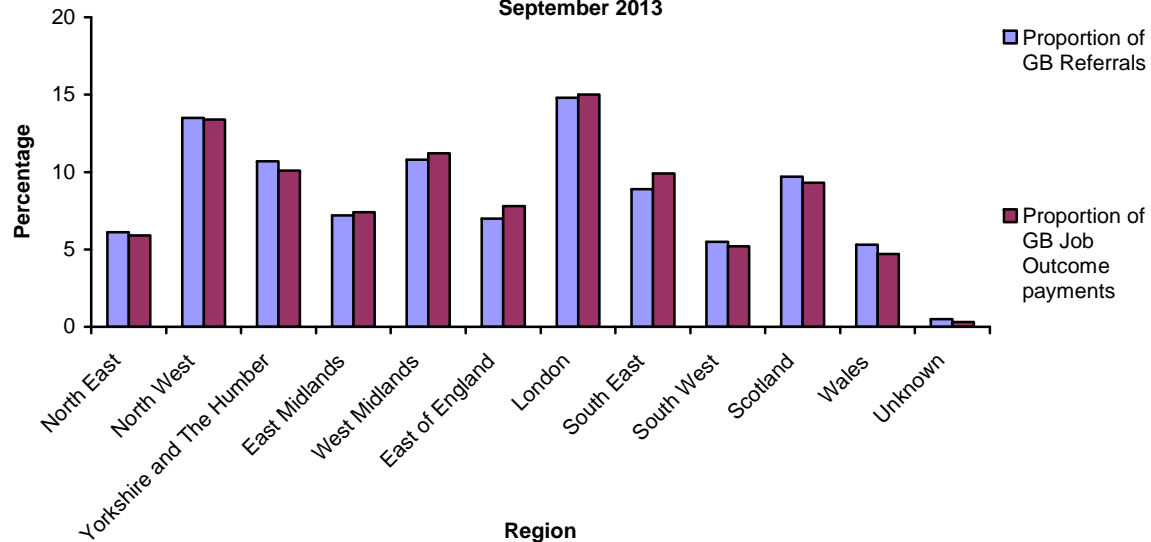


Chart 7b (see also **Supplementary table 2.13** in Section C3) shows the proportion of the total Referrals to the Work Programme and Job Outcomes payments since the start of the scheme by region.

The highest proportion of Referrals to the Work Programme (3 in 20 referrals) was in the London region followed by North West (slightly less than 3 in 20 referrals) then West Midlands and Yorkshire and the Humber (both slightly over 2 in 20 referrals). This is comparable with the proportions of all JSA and ESA claimants in these regions.

The proportion of Job Outcome payments achieved across all regions is relatively consistent with the proportion of referrals.

C. Supplementary Tables

C1. Supplementary Tables on monthly intake of Referrals analysis

The following definitions and conventions are used in the following tables

"-" Nil or Negligible; "." Not applicable; Figures are rounded to the nearest ten; some additional disclosure control has also been applied. Totals may not sum due to rounding. Figures are refreshed each time they are published and are subject to change. Months are calendar months. Volumes displayed are in thousands.

Supplementary table 2.1a: Percentage of monthly intakes of Referrals to the Work Programme that achieved a Job Outcome payment in the subsequent months following referral

Number of months after intake	Percentage											
	2011							2012				
	Jun	July	Aug	Sep	Oct	Nov	Dec	Jan	Feb	Mar	Apr	May
Volume of intake (Thousands)	74.63	99.21	73.68	63.28	58.27	68.77	58.08	65.89	64.58	60.94	46.37	50.49
1 month	-	-	-	-	-	-	-	-	-	-	-	-
2 months	-	-	-	-	-	-	-	-	-	-	-	-
3 months	-	0.1	0.1	0.1	0.1	0.1	-	-	-	0.1	0.1	0.1
4 months	0.3	0.4	0.4	0.5	0.3	0.1	0.2	0.2	0.4	0.4	0.5	0.5
5 months	0.7	0.8	0.8	0.8	0.4	0.3	0.4	0.5	1.1	1.0	1.2	0.9
6 months	1.2	1.4	1.2	1.0	0.8	0.6	0.8	1.0	1.9	2.1	1.9	1.8
7 months	2.6	2.4	1.8	2.1	1.6	1.3	1.7	2.1	3.8	3.4	4.0	3.3
8 months	3.8	3.3	3.3	3.1	2.9	2.4	2.9	4.4	5.5	5.8	6.0	5.9
9 months	4.7	4.8	4.3	4.4	4.2	3.6	5.2	6.0	7.8	7.6	8.4	7.7
10 months	6.3	5.8	5.6	5.7	5.5	6.0	6.7	8.2	9.4	9.9	10.2	9.9
11 months	7.3	6.8	6.9	7.0	8.1	7.3	8.6	9.7	11.5	11.5	12.2	11.8
12 months ⁵	8.4	8.0	8.1	9.5	9.4	9.1	9.9	11.5	12.8	13.2	13.9	13.4
13 months	9.6	9.0	10.5	10.8	11.1	10.3	11.5	12.8	14.4	14.7	15.5	14.7
14 months	10.8	11.5	11.7	12.5	12.2	11.9	12.7	14.4	15.8	16.1	16.6	16.0
15 months	13.3	12.7	13.2	13.6	13.7	13.0	13.9	15.7	17.1	17.2	18.0	17.3
16 months	14.6	14.2	14.2	15.1	14.8	14.2	15.1	16.8	18.1	18.4	19.2	18.6
17 months	15.9	15.1	15.6	16.1	16.1	15.3	16.1	17.7	19.3	19.4	20.5	.
18 months	16.8	16.4	16.6	17.3	17.1	16.3	17.0	18.8	20.4	20.7	.	.
19 months	18.2	17.4	17.7	18.3	18.1	17.1	18.0	19.8	21.5	.	.	.
20 months	19.2	18.5	18.6	19.2	18.9	18.0	18.8	20.9
21 months	20.2	19.3	19.5	19.9	19.8	18.9	19.8
22 months	21.0	20.1	20.2	20.8	20.7	19.8
23 months	21.8	20.8	21.0	21.5	21.6
24 months	22.4	21.5	21.7	22.3
25 months	23.0	22.1	22.5
26 months	23.7	22.8
27 months	24.2

⁵ For further information see the background information note available on the WP landing page: <https://www.gov.uk/government/organisations/department-for-work-pensions/series/work-programme-statistics--2>.

Supplementary table 2.1b: Percentage of monthly intakes of Referrals to the Work Programme that achieved a Job Outcome payment in the subsequent months following referral

Percentage

Number of months after intake	2012					
	Jun	July	Aug	Sep	Oct	Nov
Volume of intake (Thousands)	43.54	47.95	41.97	39.68	45.26	44.78
1 month	-	-	-	-	-	-
2 months	-	-	-	-	-	-
3 months	-	-	0.1	0.1	0.1	0.1
4 months	0.3	0.4	0.4	0.5	0.4	0.2
5 months	0.9	0.9	1.0	0.8	0.6	0.5
6 months	1.5	1.9	1.7	1.3	1.3	1.1
7 months	3.7	3.5	3.6	3.4	3	2.1
8 months	5.7	5.8	5.8	5.4	4.4	3.7
9 months	8.0	7.9	7.7	6.8	6.1	5.3
10 months	10.0	9.8	9.1	8.5	7.8	7.2
11 months	11.8	11.1	10.7	10.1	9.6	.
12 months ⁶	13.0	12.5	12.3	11.7	.	.
13 months	14.5	13.8	13.8	.	.	.
14 months	15.8	15.4
15 months	17.3

Supplementary table 2.2a: Proportion of monthly intakes of Referrals to the Work Programme who spent time off benefit by the end of September 2013

Percentage

Number of months after intake	2011							2012				
	Jun	July	Aug	Sep	Oct	Nov	Dec	Jan	Feb	Mar	Apr	May
Volume of intake (Thousands)	74.63	99.21	73.68	63.28	58.27	68.77	58.08	65.89	64.58	60.94	46.37	50.49
Percentage of people with a break in benefit	75.1	72.7	72.6	71.2	69.4	65.1	66.4	68.0	68.3	69.4	71.0	70.1
Percentage of people with a 13 week spell off benefit	46.3	43.4	43.6	43.4	43.1	40.2	40.2	42.2	42.3	43.3	44.9	43.2
Percentage of people with a 26 week spell off benefit	36.5	33.8	33.5	33.1	32.6	30.1	29.6	31.3	30.7	31.3	32.3	30.2
Percentage of people who are off benefit at the end of September 2013	43.8	41.5	41.5	41.3	39.8	37.7	38.3	40.3	40.7	42.0	43.7	43.4

⁶ For further information see the background information note available on the WP landing page: <https://www.gov.uk/government/organisations/departments-for-work-pensions/series/work-programme-statistics--2>.

Supplementary table 2.2b: Proportion of monthly intakes of Referrals to the Work Programme who spent time off benefit by the end of September 2013

Percentage

Number of months after intake	2012					
	Jun	July	Aug	Sep	Oct	Nov
Volume of intake (Thousands)	43.54	47.95	41.97	39.68	45.26	44.78
Percentage of people with a break in benefit	67.9	65.7	63.5	60.0	56.0	49.7
Percentage of people with a 13 week spell off benefit	41.2	39.0	36.5	32.9	29.4	24.5
Percentage of people with a 26 week spell off benefit	28.1	26.2	23.2	20.0	16.6	12.5
Percentage of people who are off benefit at the end of September 2013	42.4	41.0	39.8	37.2	35.5	31.5

Supplementary table 2.3: Proportion of all Participants who had spent sufficient time on the programme to do so that achieved a Job Outcome payment (up to the end of September 2013).

Thousands

	Referrals	Referrals able to attain a Job Outcome payment	Referrals achieving a Job Outcome payment	Percentage of the Referrals that could achieve a Job Outcome payment that did (%)
Great Britain	1407.12	1254.69	207.95	16.6

Supplementary table 2.4: Numbers of Sustainment payments achieved by Participants on the Work Programme up to the end of September 2013 by monthly intake of referral

Thousands

Monthly Intake	No Sustainment payments	1-3 Sustainment payments	4-6 Sustainment payments	7-9 Sustainment payments	10-12 Sustainment payments	13+ Sustainment payments
Jun-11	57.39	2.73	2.50	2.32	2.18	7.51
Jul-11	78.02	3.69	3.24	3.02	2.90	8.34
Aug-11	58.21	2.82	2.60	2.31	2.14	5.60
Sep-11	50.11	2.46	2.32	2.13	2.02	4.24
Oct-11	46.55	2.35	2.17	2.04	1.91	3.25
Nov-11	56.11	2.69	2.47	2.42	2.35	2.73
Dec-11	47.50	2.35	2.25	2.02	2.10	1.86
Jan-12	53.20	2.89	2.79	2.67	2.66	1.68
Feb-12	51.90	3.04	2.87	2.83	2.60	1.34
Mar-12	49.43	2.80	2.93	2.87	2.24	0.67
Apr-12	37.70	2.29	2.47	2.35	1.27	0.29
May-12	41.98	2.45	2.83	2.49	0.65	0.09
Jun-12	36.85	2.11	2.48	1.77	0.33	.
Jul-12	41.54	2.22	2.84	1.18	0.17	.
Aug-12	36.98	2.13	2.29	0.53	0.04	.
Sep-12	35.88	1.92	1.61	0.27	.	.
Oct-12	42.03	2.14	0.95	0.14	.	.
Nov-12	40.82	1.77	0.31	0.02	.	.

Supplementary table 2.5: Proportion of each monthly intake of Referrals to the Work Programme (who had enough time to achieve at least one Sustainment payment) that achieved the maximum number of Sustainment payments possible in the period up to the end of September 2013, broken down by number of Sustainment payments achieved.

Percentage

Monthly intake	Total proportion for each intake	1-3 Sustainment payments	4-6 Sustainment payments	7-9 Sustainment payments	10-12 Sustainment payments	13+ Sustainment payments
Jun-11	69.1	5.6	6.9	7.6	7.1	41.9
Jul-11	67.1	6.4	7.5	8.0	7.9	37.3
Aug-11	67.5	7.5	8.2	9.0	8.5	34.3
Sep-11	67.5	7.4	9.3	10.3	10.0	30.5
Oct-11	68.9	8.6	10.8	11.5	11.0	27.0
Nov-11	69.6	10.1	11.7	13.9	13.2	20.7
Dec-11	69.6	11.1	12.9	13.9	14.8	16.9
Jan-12	70.8	11.1	14.9	15.7	16.3	12.8
Feb-12	69.7	12.2	14.5	17.3	16.3	9.4
Mar-12	72.1	13.3	17.6	21.0	15.5	4.7
Apr-12	73.8	15.0	21.3	23.4	11.7	2.4
May-12	75.9	17.9	26.5	24.9	6.0	0.6
Jun-12	78.1	21.1	31.2	22.0	3.8	.
Jul-12	79.9	25.2	37.9	14.8	2.0	.
Aug-12	81.8	32.5	40.3	8.6	0.4	.
Sep-12	83.6	41.7	36.0	5.9	.	.
Oct-12	84.9	58.0	23.7	3.2	.	.
Nov-12	85.2	72.8	11.9	0.5	.	.

Supplementary table 2.6: Time series of the proportion of each monthly Referral intakes to the Work Programme, by status as at September 2013

Month of Referral	All Referrals (Thousand)	Completed Early	Completed allotted time (104 weeks) ³			Completed: Maximum Outcome payments attained	Still on the scheme	Never Attached
			Returned to Jobcentre Plus at 104 weeks	Returned to Jobcentre Plus post 104 weeks	Provider still receiving Outcome payments			
Jun-11	74.63	0.3	74.9	6.4	12.0	5.2	.	1.3
Jul-11	99.21	0.3	76.8	4.7	12.4	4.6	.	1.2
Aug-11	73.68	0.2	61.0	3.3	29.4	4.6	.	1.4
Sep-11	63.28	0.2	60.1	1.0	32.7	4.7	.	1.3
Oct-11	58.27	0.2	5.9	-	3.3	4.5	85.8	0.4
Nov-11	68.77	0.2	.	.	.	2.9	96.9	.
Dec-11	58.08	0.2	.	.	.	1.9	97.9	.
Jan-12	65.89	0.2	.	.	.	1.5	98.3	.
Feb-12	64.58	0.1	.	.	.	0.5	99.4	.
Mar-12	60.94	0.2	99.8	.
Apr-12	46.37	0.1	99.9	.
May-12	50.49	0.2	99.8	.
Jun-12	43.54	0.1	99.9	.
Jul-12	47.95	0.1	99.9	.
Aug-12	41.97	0.1	99.9	.
Sep-12	39.68	0.1	99.9	.
Oct-12	45.26	0.1	99.9	.
Nov-12	44.78	0.1	99.9	.
Dec-12	34.47	0.1	99.9	.
Jan-13	48.51	0.1	99.9	.
Feb-13	37.53	0.1	99.9	.
Mar-13	34.77	0.1	99.9	.
Apr-13	36.84	99.9	.
May-13	36.21	100.0	.
Jun-13	34.53	100.0	.
Jul-13	38.06	100.0	.
Aug-13	29.45	100.0	.
Sep-13	29.38	100.0	.

C2. Supplementary Tables showing volumes of Work Programme Referrals, Attachments, Job Outcome payments and Sustainment payments

Supplementary table 2.7: Time series showing number of Referrals, Attachments, Job Outcome payments and Sustainment payments paid to providers and achieved by individuals: June 2011 to September 2013

Thousands

Month	Referrals	Attachments	Job Outcome payments	Number of Sustainment payments paid to providers	Number of people who have achieved their first Sustainment payment
Jun-11	74.63	28.57	.	.	.
Jul-11	99.21	97.65	.	.	.
Aug-11	73.68	79.26	.	.	.
Sep-11	63.28	68.46	0.02	.	.
Oct-11	58.27	58.15	0.30	0.00	0.00
Nov-11	68.77	64.98	0.59	0.02	0.01
Dec-11	58.08	55.49	1.08	0.06	0.04
Jan-12	65.89	65.96	2.29	0.17	0.10
Feb-12	64.58	65.18	2.58	0.27	0.16
Mar-12	60.94	61.10	2.30	.	.
Year 1 total	687.33	644.79	9.15	0.51	0.31
Apr-12	46.37	47.50	4.90	13.85	6.46
May-12	50.49	51.18	3.94	4.19	1.60
Jun-12	43.54	44.43	5.66	15.26	5.10
Jul-12	47.95	48.53	6.91	22.21	6.12
Aug-12	41.97	42.88	7.57	28.16	5.71
Sep-12	39.68	40.14	16.29	40.28	9.62
Oct-12	45.26	40.76	9.94	53.82	11.37
Nov-12	44.78	46.70	14.29	69.51	12.53
Dec-12	34.47	32.75	10.84	57.53	8.87
Jan-13	48.51	46.26	15.34	95.16	14.25
Feb-13	37.53	39.07	11.71	97.12	13.17
Mar-13	34.77	35.43	14.23	96.29	12.62
Year 2 total	515.31	515.64	121.62	593.39	107.42
Apr-13	36.84	36.24	13.54	115.80	13.74
May-13	36.21	36.15	12.98	121.94	12.58
Jun-13	34.53	34.14	10.76	121.64	14.34
Jul-13	38.06	37.88	12.79	149.48	14.35
Aug-13	29.45	30.63	12.66	135.66	11.00
Sep-13	29.38	28.70	14.47	153.86	13.96
Overall Total	1407.12	1364.17	207.95	1392.30	187.69

Supplementary table 2.8: Number of Sustainment payments achieved by Participants on the Work Programme: June 2011 to September 2013

Thousands

Defined Job Outcome period	Number of Sustainment payments paid to providers	Number of Participants	Numbers of Participants with Sustainment payments by the number of Sustainment payments paid									
			1	2	3	4	5	6	7	8	9	10+
All	1392.30	187.69	17.75	14.89	14.84	15.15	14.07	13.30	11.84	11.11	10.70	64.04
3 month	444.05	55.40	5.90	5.17	4.75	3.86	3.11	2.67	3.33	3.14	3.26	20.21
6 month	948.26	132.30	11.86	9.72	10.09	11.28	10.96	10.63	8.52	7.97	7.44	43.83

C3. Supplementary Tables of characteristics

Supplementary table 2.9: The cumulative number of Referrals, Attachments, Job Outcome payments and Sustainment payments to the Work Programme, by Payment Group to end of September 2013

Thousands

	Referrals	Attachments	Job Outcome payments	Number of Sustainment payments paid to providers
Total	1407.12	1364.17	207.95	1392.30
PG 1: JSA 18 to 24	255.56	249.43	50.19	315.39
PG 2: JSA 25 and over	597.39	584.78	94.23	629.24
PG 3: JSA Early Entrants	271.64	265.44	51.49	377.67
PG 4: JSA Ex-Incapacity Benefits	21.64	20.99	1.76	8.84
PG 5: ESA Volunteers	52.62	49.79	1.98	12.60
PG 6: New ESA Customers	131.00	126.56	6.29	39.26
PG 7: ESA Ex-Incapacity Benefits	39.67	37.98	0.48	2.55
PG 8: IB/IS Volunteers	2.72	2.61	0.41	3.12
PG 9: JSA Prison Leavers	34.88	26.59	1.11	3.63

Supplementary table 2.10: Percentage of monthly intakes of Referrals to the Work Programme achieving a Job Outcome within 12 months following referral

Percentage

Monthly intake	All	PG1	PG2	PG6	PG3	PG4	PG9 ⁷	PG5	PG7	PG8
Jun-11	8.4	10.3	8.0	3.9	8.9	11.1	.	6.7	-	5.9
Jul-11	8.0	9.5	7.5	3.8	8.5	8.1	.	8.0	8.3	6.9
Aug-11	8.1	9.7	7.5	4.0	8.7	7.1	.	8.7	-	4.8
Sep-11	9.5	10.6	9.3	4.8	10.3	8.3	.	8.5	-	4.5
Oct-11	9.4	10.9	9.4	3.9	10.4	9.5	.	6.8	2.4	11.1
Nov-11	9.1	11.1	9.6	4.1	10.8	7.4	.	5.1	1.2	8.3
Dec-11	9.9	10.7	9.9	3.6	12.1	10.0	.	4.3	1.5	6.3
Jan-12	11.5	12.7	11.1	4.5	15.1	11.8	.	4.9	2.5	13.3
Feb-12	12.8	13.3	12.0	4.3	15.6	9.6	7.1	5.0	2.5	9.1
Mar-12	13.2	15.2	12.4	4.8	16.6	11.3	4.1	5.2	2.0	11.1
Apr-12	13.9	16.7	13.5	4.8	17.4	10.8	4.9	4.7	1.1	-
May-12	13.4	17.5	13.4	4.6	15.5	12.2	4.8	2.9	1.8	14.3
Jun-12	13.0	16.6	13.2	4.9	15.3	11.3	5.3	4.8	0.9	16.7
Jul-12	12.5	16.1	13.1	5.4	14.5	11.0	4.4	4.1	0.8	12.5
Aug-12	12.3	16.2	12.7	5.3	14.9	12.9	4.5	3.3	1.8	14.3
Sep-12	11.7	15.1	12.8	5.6	14.8	9.5	5.1	4.5	2.0	12.5
					Other JSA			Other ESA/IB		
Jun-11							8.9			7.1
Jul-11							8.5			7.7
Aug-11							8.7			6.3
Sep-11							10.3			6.8
Oct-11							10.4			5.9
Nov-11							10.7			4.2
Dec-11							12.0			3.7
Jan-12							15.0			4.3
Feb-12							15.4			4.0
Mar-12							15.7			4.1
Apr-12							15.5			3.6
May-12							13.6			2.3
Jun-12							13.2			3.3
Jul-12							12.2			2.9
Aug-12							12.4			2.9
Sep-12							11.9			3.8

Payment Group Legend:

- Payment Group 1: JSA 18 to 24
- Payment Group 2: JSA 25 and over
- Payment Group 3: JSA Early Entrants
- Payment Group 4: JSA Ex-Incapacity Benefits
- Payment Group 5: ESA Volunteers
- Payment Group 6: New ESA Customers
- Payment Group 7: ESA Ex-Incapacity Benefits
- Payment Group 8: IB/IS Volunteers
- Payment Group 9: JSA Prison Leavers

Supplementary table 2.11a: Time Series showing number of Referrals, Attachments, Job Outcome payments and Sustainment payments for the 18-24 and JSA 25 and over Payment Groups (with a 26 week Job Outcome qualifying period): June 2011 to September 2013

Thousands

	Payment Group									
	JSA 18 to 24					JSA 25 and over				
	Referrals	Attachments	Job Outcome payment	Number of Sustainment payments paid to providers	%	Referrals	Attachments	Job Outcome payment	Number of Sustainment payments paid to providers	%
Jun-11	10.92	4.16	.	.		41.79	16.81	.	.	
Jul-11	16.35	15.25	.	.		49.86	50.46	.	.	
Aug-11	14.30	13.85	.	.		36.17	39.52	.	.	
Sep-11	13.15	13.70	.	.		29.84	33.25	.	.	
Oct-11	13.62	12.78	.	.		26.22	27.04	.	.	
Nov-11	14.34	13.75	.	.		28.81	28.21	.	.	
Dec-11	11.65	11.19	0.01	.		24.36	23.70	0.06	.	
Jan-12	14.05	13.97	0.24	0.00		31.85	31.58	0.72	0.02	
Feb-12	11.05	11.91	0.45	0.02		23.86	26.13	1.12	0.07	
Mar-12	11.59	11.36	0.55	-		23.25	23.65	1.27	-	
Year total¹	131.01	121.93	1.25	0.02	1.0	316.00	300.35	3.18	0.09	1.0
Apr-12	11.17	10.82	1.14	1.37		17.59	18.38	2.54	3.55	
May-12	12.37	12.53	0.91	0.77		19.48	19.95	2.09	1.89	
Jun-12	11.30	11.61	1.24	2.93		16.68	17.10	2.39	6.41	
Jul-12	10.74	11.25	1.25	4.52		19.93	20.26	2.98	9.78	
Aug-12	8.58	9.06	1.57	5.42		18.58	18.68	3.31	12.64	
Sep-12	6.75	7.40	3.34	8.06		18.81	19.20	7.38	17.15	
Oct-12	7.50	6.98	2.24	10.03		19.17	17.99	4.56	24.55	
Nov-12	6.30	7.12	3.48	14.00		17.25	19.06	6.51	32.40	
Dec-12	4.02	4.08	2.60	12.09		11.93	11.81	4.59	26.11	
Jan-13	5.38	5.41	4.08	20.51		18.34	17.46	6.71	43.79	
Feb-13	3.95	4.24	3.12	20.43		13.71	14.53	5.18	45.81	
Mar-13	4.32	4.41	4.27	21.63		12.28	12.86	7.01	44.65	
Year total²	92.38	94.91	29.25	121.76	31.7	203.75	207.27	55.26	268.73	27.1
Apr-13	5.85	5.79	4.05	26.81		12.96	12.80	6.66	54.01	
May-13	5.63	5.64	3.64	29.40		12.66	12.85	6.18	55.07	
Jun-13	6.51	6.44	2.66	29.77		11.91	11.90	4.50	55.40	
Jul-13	6.20	6.28	3.00	36.87		14.47	14.24	5.62	67.11	
Aug-13	4.34	4.63	2.98	33.44		12.19	12.58	5.97	60.54	
Sep-13	3.63	3.79	3.36	37.32		13.45	12.79	6.86	68.30	
Total	255.56	249.43	50.19	315.39		597.39	584.78	94.23	629.24	

Supplementary table 2.11b Time Series showing number of Referrals, Attachments, Job Outcome payments and Sustainment payments for the other JSA Payment Group (with a 13 week Job Outcome qualifying period): June 2011 to September 2013

Thousands

Payment Group					
13-Week Job Outcome payments					
Other JSA					
	Referrals	Attachments	Job Outcome payment	Number of Sustainment payments paid to providers	%
Jun-11	19.56	6.79	.	.	
Jul-11	28.70	28.29	.	.	
Aug-11	19.13	21.92	.	.	
Sep-11	15.86	17.18	0.02	.	
Oct-11	12.43	13.32	0.29	0.00	
Nov-11	13.09	12.57	0.55	0.02	
Dec-11	15.45	14.18	0.92	0.05	
Jan-12	13.01	13.45	1.23	0.13	
Feb-12	24.13	21.29	0.90	0.16	
Mar-12	20.30	20.30	0.44	-	
Year 1 total	181.66	169.30	4.34	0.36	2.4
Apr-12	13.13	13.54	1.09	8.24	
May-12	13.22	13.09	0.82	1.39	
Jun-12	10.50	10.60	1.81	5.42	
Jul-12	11.58	11.31	2.39	7.21	
Aug-12	9.71	9.78	2.43	9.11	
Sep-12	8.00	7.89	4.90	13.53	
Oct-12	8.47	7.37	2.80	17.06	
Nov-12	7.66	8.01	3.80	20.54	
Dec-12	6.58	5.82	3.22	17.14	
Jan-13	9.64	9.12	3.95	27.31	
Feb-13	7.10	7.21	2.90	27.16	
Mar-13	6.46	6.47	2.55	26.34	
Year 2 total	112.05	110.19	32.65	180.44	29.1
Apr-13	6.78	6.61	2.42	30.39	
May-13	6.56	6.43	2.58	32.69	
Jun-13	5.66	5.59	2.90	31.51	
Jul-13	5.96	5.72	3.26	39.01	
Aug-13	4.79	4.77	2.92	35.33	
Sep-13	4.70	4.42	3.30	40.39	
Total	328.16	313.02	54.37	390.14	

Supplementary table 2.11c Time Series showing number of Referrals, Attachments, Job Outcome payments and Sustainment payments for the new ESA customer and other ESA/IB Payment Groups (with a 13 week Job Outcome qualifying period): June 2011 to September 2013

Thousands

	Payment Group									
	13-Week Job Outcome payments									
	New ESA customers					Other ESA/IB				
Referrals	Attachments	Job Outcome payment	Number of Sustainment payments paid to providers	%	Referrals	Attachments	Job Outcome payment	Number of Sustainment payments paid to providers	%	
Jun-11	1.80	0.60	.	.	0.56	0.20	.	.		
Jul-11	3.39	2.91	.	.	0.91	0.73	.	.		
Aug-11	3.29	3.11	.	.	0.80	0.86	.	.		
Sep-11	3.55	3.43	0.00	.	0.88	0.89	0.00	.		
Oct-11	4.82	4.04	0.01	0.00	1.19	0.97	0.00	0.00		
Nov-11	9.89	8.59	0.03	0.00	2.64	1.85	0.01	0.00		
Dec-11	4.16	4.65	0.05	0.00	2.46	1.76	0.03	0.00		
Jan-12	4.23	4.62	0.06	0.01	2.76	2.33	0.04	0.01		
Feb-12	3.03	3.42	0.07	0.01	2.52	2.43	0.04	0.01		
Mar-12	3.13	3.15	0.04	-	2.66	2.64	0.01	-		
Year 1 total	41.28	38.54	0.25	0.03	0.6	17.37	14.67	0.14	0.02	0.8
Apr-12	2.27	2.48	0.09	0.45	2.21	2.28	0.04	0.24		
May-12	2.85	2.80	0.09	0.09	2.56	2.82	0.03	0.05		
Jun-12	2.65	2.69	0.17	0.34	2.41	2.43	0.05	0.17		
Jul-12	2.94	3.00	0.20	0.50	2.76	2.72	0.10	0.20		
Aug-12	2.66	2.78	0.16	0.71	2.44	2.58	0.09	0.28		
Sep-12	3.23	2.93	0.47	1.05	2.89	2.72	0.20	0.50		
Oct-12	6.13	5.07	0.22	1.47	3.99	3.36	0.11	0.70		
Nov-12	7.41	7.05	0.33	1.67	6.15	5.47	0.16	0.89		
Dec-12	6.73	6.24	0.31	1.49	5.21	4.80	0.13	0.71		
Jan-13	8.11	7.85	0.42	2.44	7.03	6.42	0.19	1.11		
Feb-13	6.77	6.91	0.34	2.56	6.01	6.18	0.17	1.15		
Mar-13	6.14	6.21	0.26	2.50	5.57	5.48	0.14	1.17		
Year 2 total	57.90	56.01	3.06	15.28	5.3	49.24	47.26	1.39	7.18	2.8
Apr-13	5.83	5.80	0.29	3.08	5.41	5.24	0.12	1.50		
May-13	5.82	5.80	0.40	3.26	5.53	5.43	0.19	1.53		
Jun-13	5.53	5.36	0.48	3.39	4.92	4.85	0.21	1.57		
Jul-13	6.15	6.24	0.62	4.44	5.28	5.39	0.29	2.05		
Aug-13	4.33	4.64	0.53	4.38	3.80	4.01	0.26	1.98		
Sep-13	4.15	4.17	0.66	5.41	3.45	3.53	0.29	2.44		
Total	131.00	126.56	6.29	39.26		95.01	90.38	2.88	18.27	

Supplementary table 2.12: Number of Referrals and Attachments to the Work Programme, the number of Participants who have qualified for a Job Outcome payment and the number of Participants who have qualified for at least one Sustainment payment – Age by gender: June 2011 to September 2013

		<i>Thousands</i>			
		Referrals	Attachments	Job Outcome payments	Number of individuals who achieved at least 1 Sustainment payment
Male	Aged 18 - 24	262.89	252.80	49.77	44.41
	Aged 25 – 34	222.80	213.97	34.63	30.77
	Aged 35 – 44	191.90	186.11	27.30	24.53
	Aged 45 – 49	95.66	93.30	12.28	11.03
	Aged 50 – 54	79.69	77.98	9.34	8.42
	Aged 55 – 59	63.20	61.89	5.76	5.23
	Aged 60+	13.44	13.05	0.72	0.65
	Unknown Age	0.01	0.01	-	-
Female	Aged 18 - 24	126.06	122.79	24.44	22.33
	Aged 25 – 34	86.57	83.81	11.66	10.71
	Aged 35 – 44	111.50	108.63	15.79	14.64
	Aged 45 – 49	62.38	60.94	8.05	7.40
	Aged 50 – 54	49.23	48.07	5.26	4.84
	Aged 55 – 59	36.16	35.34	2.81	2.60
	Aged 60+	5.61	5.45	0.15	0.13
	Unknown Age	0.02	0.02	-	-

Supplementary table 2.13: Number of Referrals and Attachments to the Work Programme, the number of Participants who have qualified for a Job Outcome payment and the number of Sustainment payments paid to providers – by Region: June 2011 to September 2013

<i>Thousands</i>				
	Referrals	Attachments	Job Outcome payments	Number of Sustainment payments paid to providers
Total	1407.12	1364.17	207.95	1392.30
North East	86.22	84.03	12.34	78.47
North West	190.39	184.60	27.91	185.59
Yorkshire and the Humber	150.01	146.27	20.90	131.94
East Midlands	101.06	97.22	15.41	103.88
West Midlands	151.34	146.89	23.24	151.86
East of England	98.61	96.13	16.27	108.60
London	208.35	201.28	31.16	224.15
South East	125.22	121.82	20.53	146.00
South West	77.99	75.65	10.73	66.34
Scotland	135.95	131.58	19.25	131.11
Wales	74.44	72.34	9.69	61.13
Unknown	7.55	6.35	0.53	3.23

Supplementary table 2.14: Number of Claimants in receipt of JSA/ESA/IB in Great Britain, by region - February 2013 snapshot.

Thousands

	Number of Individuals in the Population Claiming JSA/ESA/IB (Caseload - thousands)	Claimants claiming JSA/ESA/IB in each Region (%) as a proportion of the GB total
GB	2321.19	
North East	135.33	5.8
North West	323.59	13.9
Yorkshire and The Humber	235.78	10.2
East Midlands	160.18	6.9
West Midlands	236.43	10.2
East of England	173.77	7.5
London	336.70	14.5
South East	211.46	9.1
South West	146.25	6.3
Wales	228.05	9.8
Scotland	133.65	5.8
Unknown	-	-

Source: www.nomis.co.uk

Supplementary table 2.15: Number of Referrals, Attachments, Job Outcome payments and Sustainment payments to the Work Programme – by Contract: June 2011 to September 2013

Contract	<i>Thousands</i>			
	Referrals	Attachments	Job Outcome payments	Number of Sustainment payments paid to providers
East of England: Ingeus UK LTD	50.52	48.97	8.86	60.09
East of England: Seetec	49.10	48.12	7.53	49.37
East Midlands: A4e Ltd	50.25	47.83	6.71	44.63
East Midlands: Ingeus UK Ltd	50.90	49.31	8.63	58.79
West London: Ingeus UK Ltd	29.39	28.29	4.72	35.00
West London: Maximus Emp UK Ltd	28.94	27.77	4.31	33.00
West London: Reed in Partnership Ltd	28.90	27.78	4.24	31.25
East London: A4e Ltd	40.79	39.07	5.97	40.20
East London: Careers Development Group	40.66	39.70	6.46	46.34
East London: Seetec	40.28	39.15	5.48	38.48
North East: Avanta Enterprise Ltd	43.52	42.19	6.21	39.96
North East: Ingeus UK Ltd	43.48	42.52	6.18	38.75
Merseyside, Halton, Cumbria, Lancs: A4e Ltd	47.43	44.88	6.29	42.14
Merseyside, Halton, Cumbria, Lancs: Ingeus UK LTD	47.30	46.01	6.77	43.67
Manchester, Cheshire, Warrington: Avanta Enterprise Ltd	32.39	31.39	4.79	32.43
Manchester, Cheshire, Warrington: G4S	32.25	31.83	5.17	35.11
Manchester, Cheshire, Warrington: Seetec	31.82	31.18	4.95	32.67
Scotland: Ingeus UK LTD	68.61	66.38	10.05	69.41
Scotland: Working Links (Emp) Ltd	67.82	65.60	9.24	61.95
Thames Valley, Hamps, Isle of Wight: A4e Ltd	28.60	27.35	4.02	27.21
Thames Valley, Hamps, Isle of Wight: Maximus Emp UK Ltd	28.77	28.38	4.99	36.57
Surrey, Sussex, Kent: Avanta Enterprise Ltd	34.25	33.13	5.57	41.93
Surrey, Sussex, Kent: G4S	34.74	33.97	6.08	41.16
Devon, Cornwall, Dorset, Somerset: Prospects Serv Ltd	20.31	19.58	2.61	13.80
Devon, Cornwall, Dorset, Somerset: Working Links (Emp) Ltd	20.43	20.06	3.19	20.70
Glouc, Wilts, Swindon, West of England: JHP Group Ltd	18.82	18.29	2.42	16.26
Glouc, Wilts, Swindon, West of England: Rehab jobfit LLP	18.79	18.00	2.50	15.41
Wales: Rehab jobfit LLP	37.07	35.67	4.53	28.04
Wales: Working Links (Emp) Ltd	37.61	36.83	5.15	32.99
Birmingham, Solihull, Black Country: EOS-Works Ltd	32.95	32.31	5.53	37.07
Birmingham, Solihull, Black Country: Corp of Newc. College	32.61	31.37	4.40	29.53
Birmingham, Solihull, Black Country: Pertemps	32.75	31.70	4.58	30.97
Coventry, Warwicks, Staffs, the Marches: esg. Holdings Ltd	26.96	25.75	4.39	27.74
Coventry, Warwicks, Staffs, the Marches: Serco Ltd	27.15	26.74	4.45	27.22
West Yorkshire: Interserve Working Futures	33.37	32.66	4.27	24.78
West Yorkshire: Ingeus UK LTD	33.79	32.84	5.16	34.17
South Yorkshire: A4e Ltd	21.74	20.81	3.06	19.31
South Yorkshire: Serco Ltd	21.82	21.51	3.23	19.98
NE Yorks, The Humber: G4S	20.19	19.83	2.87	18.30
NE Yorks, The Humber: Corp of Newc College	20.01	19.43	2.40	15.94

Supplementary table 2.16: In year (financial year) proportion of Referrals to the Work Programme who have achieved a Job Outcome payment, by contract- for the Payment Groups which have a Minimum Performance Level (MPL): Using data from September 2013

Percentage

Contract	June 2011 – March 2012 (Year 1)			April 2012 – March 2013 (Year 2)		
	JSA 18 to 24	JSA 25 or more	ESA new customers	JSA 18 to 24	JSA 25 or more	ESA new customers
East of England: Ingeus UK LTD	1.2	1.4	0.5	33.9	34.9	7.6
East of England: Seetec	1.1	1.0	0.7	28.7	30.1	5.7
East Midlands: A4e Ltd	1.3	1.0	0.5	30.9	17.0	4.2
East Midlands: Ingeus UK Ltd	1.8	1.3	1.3	40.6	24.0	6.1
West London: Ingeus UK Ltd	1.7	1.8	0.8	39.4	41.5	6.6
West London: Maximus Emp UK Ltd	1.1	1.2	0.3	36.4	38.6	4.4
West London: Reed in Partnership Ltd	2.0	1.8	0.6	27.7	35.6	5.0
East London: A4e Ltd	0.7	0.9	0.6	25.7	30.0	5.0
East London: Careers Development Group	0.7	1.3	0.4	29.5	34.2	3.7
East London: Seetec	0.6	0.9	0.4	26.6	29.0	4.3
North East: Avanta Enterprise Ltd	0.7	0.6	0.2	32.0	21.7	5.9
North East: Ingeus UK Ltd	1.2	0.9	0.8	29.3	22.0	5.5
Merseyside, Halton, Cumbria, Lancs: A4e Ltd	0.3	0.9	0.5	28.5	33.5	4.2
Merseyside, Halton, Cumbria, Lancs: Ingeus UK LTD	0.2	0.7	0.4	31.9	33.1	5.4
Manchester, Cheshire, Warrington: Avanta Enterprise Ltd	1.0	0.6	0.7	34.1	21.8	6.3
Manchester, Cheshire, Warrington: G4S	1.5	1.1	1.0	38.5	24.0	6.3
Manchester, Cheshire, Warrington: Seetec	1.2	0.9	1.0	36.2	23.6	6.9
Scotland: Ingeus UK LTD	1.3	1.3	0.5	36.7	32.4	5.6
Scotland: Working Links (Emp) Ltd	0.8	1.1	0.7	34.1	29.0	6.0
Thames Valley, Hamps, Isle of Wight: A4e Ltd	0.5	0.9	0.2	32.6	35.8	5.3
Thames Valley, Hamps, Isle of Wight: Maximus Emp UK Ltd	1.0	1.6	1.2	39.1	44.9	6.2
Surrey, Sussex, Kent: Avanta Enterprise Ltd	1.3	0.8	0.7	37.2	25.3	5.2
Surrey, Sussex, Kent: G4S	1.9	1.0	0.9	41.3	24.4	6.0
Devon, Cornwall, Dorset, Somerset: Prospects Serv Ltd	0.7	0.5	0.4	32.8	26.6	4.3
Devon, Cornwall, Dorset, Somerset: Working Links (Emp) Ltd	0.8	1.3	0.7	34.2	28.5	5.8
Glouc, Wilts, Swindon, West of England: JHP Group Ltd	0.6	0.8	0.6	25.0	28.3	4.8
Glouc, Wilts, Swindon, West of England: Rehab jobfit LLP	0.7	0.8	0.3	24.6	29.3	6.1
Wales: Rehab jobfit LLP	0.6	0.6	0.4	26.3	15.9	3.9
Wales: Working Links (Emp) Ltd	1.2	0.6	0.3	24.3	15.4	4.7
Birmingham, Solihull, Black Country: EOS-Works Ltd	1.3	0.8	0.9	33.7	24.8	5.4
Birmingham, Solihull, Black Country: Corp. of Newc. College	0.1	0.2	-	28.0	19.4	3.3
Birmingham, Solihull, Black Country: Pertemps	0.4	0.3	0.3	29.7	19.7	4.1
Coventry, Warwicks, Staffs, the Marches: esg. Holdings Ltd	1.1	0.8	0.4	34.7	22.7	4.2
Coventry, Warwicks, Staffs, the Marches: Serco Ltd	0.7	0.6	1.7	37.6	23.9	4.4
West Yorkshire: Interserve Working Futures	0.5	0.9	0.2	25.2	26.9	4.8
West Yorkshire: Ingeus UK LTD	0.6	1.3	0.2	29.5	35.3	8.0
South Yorkshire: A4e Ltd	1.5	1.0	0.8	25.3	15.3	5.5
South Yorkshire: Serco Ltd	1.0	0.7	0.6	29.2	17.2	5.1
NE Yorks, The Humber: G4S	1.3	0.6	1.0	28.6	18.7	5.7
NE Yorks, The Humber: Corp of Newc. College	0.2	0.4	-	24.8	15.5	2.8

Supplementary table 2.17: Proportion of Referrals to the Work Programme that have received at least 12 months of support on the Work Programme and achieved a Job Outcome payment within that period: to the end of September 2013.

Contract	Number of Referrals (Thousands)	Number of Job Outcomes (Thousands)	Proportion of Referrals Achieving a Job Outcome at 12 months (Percentage)
All	957.32	102.38	10.7%
East of England: Ingeus UK LTD	34.07	4.55	13.4%
East of England: Seetec	33.29	3.73	11.2%
East Midlands: A4e Ltd	33.04	3.48	10.5%
East Midlands: Ingeus UK Ltd	33.30	4.88	14.7%
West London: Ingeus UK Ltd	20.58	2.48	12.1%
West London: Maximus Emp UK Ltd	20.24	2.04	10.1%
West London: Reed in Partnership Ltd	20.17	1.99	9.9%
East London: A4e Ltd	28.75	2.93	10.2%
East London: Careers Development Group	28.74	3.23	11.2%
East London: Seetec	28.55	2.64	9.2%
North East: Avanta Enterprise Ltd	30.14	2.82	9.4%
North East: Ingeus UK Ltd	29.94	3.01	10.1%
Merseyside, Halton, Cumbria, Lancs: A4e Ltd	30.61	3.07	10.0%
Merseyside, Halton, Cumbria, Lancs: Ingeus UK LTD	30.75	3.22	10.5%
Manchester, Cheshire, Warrington: Avanta Enterprise Ltd	21.36	2.39	11.2%
Manchester, Cheshire, Warrington: G4S	21.28	2.71	12.7%
Manchester, Cheshire, Warrington: Seetec	21.07	2.58	12.2%
Scotland: Ingeus UK LTD	47.21	5.17	11.0%
Scotland: Working Links (Emp) Ltd	46.85	4.46	9.5%
Thames Valley, Hamps, Isle of Wight: A4e Ltd	19.13	1.88	9.8%
Thames Valley, Hamps, Isle of Wight: Maximus Emp UK Ltd	19.27	2.51	13.0%
Surrey, Sussex, Kent: Avanta Enterprise Ltd	23.25	2.72	11.7%
Surrey, Sussex, Kent: G4S	23.46	3.07	13.1%
Devon, Cornwall, Dorset, Somerset: Prospects Serv Ltd	13.09	1.04	7.9%
Devon, Cornwall, Dorset, Somerset: Working Links (Emp) Ltd	13.22	1.50	11.3%
Glouc, Wilts, Swindon, West of England: JHP Group Ltd	12.93	1.06	8.2%
Glouc, Wilts, Swindon, West of England: Rehab jobfit LLP	12.92	1.11	8.6%
Wales: Rehab jobfit LLP	24.69	2.08	8.4%
Wales: Working Links (Emp) Ltd	24.78	2.41	9.7%
Birmingham, Solihull, Black Country: EOS-Works Ltd	23.47	2.85	12.1%
Birmingham, Solihull, Black Country: Corp. of Newc. College	23.46	2.04	8.7%
Birmingham, Solihull, Black Country: Pertemps	23.36	2.26	9.7%
Coventry, Warwicks, Staffs, the Marches: esg. Holdings Ltd	17.90	2.23	12.5%
Coventry, Warwicks, Staffs, the Marches: Serco Ltd	18.08	2.26	12.5%
West Yorkshire: Interserve Working Futures	22.67	1.85	8.2%
West Yorkshire: Ingeus UK LTD	22.85	2.52	11.0%
South Yorkshire: A4e Ltd	14.88	1.57	10.6%
South Yorkshire: Serco Ltd	14.86	1.63	11.0%
NE Yorks, The Humber: G4S	14.58	1.36	9.3%
NE Yorks, The Humber: Corp. of Newc. College	14.54	1.07	7.4%

SOURCE: DWP: Information, Governance and Security Directorate (IGS)

Notes:

Referrals (Thousands) Referrals shown are 'net' Referrals which do not include rejections, cancellations or Referrals to ESA information sessions.

Attachments (Thousands) The date of the first engagement activity between the provider and the Participant as recorded on the payment administrative system.

Job Outcomes (Thousands) The Work Programme IT payment system was updated on the 26th March 2012 and validation processes introduced in April 2012. The early data series following this was subject to fluctuations as the new system and processes bedded in. For further details please see section 4.1 of the information note available on the WP landing page: <https://www.gov.uk/government/organisations/department-for-work-pensions/series/work-programme-statistics--2>

Sustainment payments (Thousands) Tables shows the number of Sustainment payments paid to providers in each calendar month. The Work Programme IT payment system update went live in April 2012. All Sustainment payments prior to this were recorded clerically and uploaded to the system during April and May 2012. The payment date for these is based on the date the information was uploaded to the system. For Sustainment payments recorded after this, payment dates are based on the date that payments were made to providers. For further details see the information note available on the WP landing page: <http://research.dwp.gov.uk/asd/index.php?page=wp>.

Payment Group Payment Groups are assigned by Jobcentre Plus, on the basis of a Claimant's circumstances, and benefit they receive. For more information on the Payment Groups, when they commenced and inconsistencies please see the information note available on the WP landing page: <https://www.gov.uk/government/organisations/department-for-work-pensions/series/work-programme-statistics--2>

Job Outcome length The length of time before a Claimant qualifies for a Job Outcome is dependent on their assigned Payment Group. For more information please see the information note available on the WP landing page:

<https://www.gov.uk/government/organisations/department-for-work-pensions/series/work-programme-statistics--2>

Primary Health Condition Primary Health Condition is for Employment and Support Allowance/Incapacity Benefit Claimants only. Causes of incapacity are based on the International Classification of Diseases, 10th Revision, published by the World Health Organisation. Medical condition is based on evidence provided and this in itself does not confer entitlement to Employment Support Allowance/Incapacity Benefit.

Age Age is fixed at the time of referral.

Ethnicity Summary Ethnic Group is self assessed and recorded on the Jobcentre Plus administrative system.

Region The Claimant's Region (formerly Government Office Region) at the time of referral.

Contract The Prime Provider and their contract area where they are responsible for delivering the Work Programme. Prime Providers can be responsible for delivering a number of contracts across Great Britain.

2.6 Notes

2.6.1. Employment Programme Statistics

The release strategy for statistics on Pre-Work Programme support and the Work Programme is represented by a table containing an overview of the schemes and a timetable of when the statistics will be released. Users can click on links within the table to view details about the scheme and the latest official statistics. Details are available here: <https://www.gov.uk/government/publications/employment-programme-official-statistics>

The Work Programme and Pre-Work Programme statistics can be accessed via the link above or alternatively Work Programme statistics can be accessed via: <https://www.gov.uk/government/organisations/department-for-work-pensions/series/work-programme-statistics--2> and Pre-Work Programme support schemes via: <https://www.gov.uk/government/publications/pre-work-programme-support>

2.6.2. Work Programme Statistics

The Department for Work and Pensions (DWP) publish a regular Statistical Release on the Work Programme official statistics on Referrals, Attachments, Job Outcome payments and Sustainment payments.

Alongside this, there are a large number of tables which enable the user to delve into the detail. These are provided to the user as:

- The DWP Tabulation Tool – this provides the user with an interactive tool to select one of thousands of possible tabulations.
- A data visualisation tool - this allows the user to view the figures as various animated charts.

Both tools can be found on the Work Programme Statistics web page:

<https://www.gov.uk/government/organisations/department-for-work-pensions/series/work-programme-statistics--2>

The following characteristic breakdowns are available on those being referred to the Work Programme, attached by a provider and on those for whom a provider has claimed a Job Outcome payment or Sustainment payments: age, gender, disability indicator, ethnicity, primary health condition (for IB and ESA Claimants) and lone parent status (for JSA and IS Claimants).

Lower level geography information is available for the Participant by local authority, parliamentary constituency and Jobcentre Plus district. Tables also contain information broken down by contract, contract package area and Payment Group.

The official statistics are released quarterly in September, December, March and June.

Achieving this improvement on the previously announced six monthly cycle; which involves aligning more frequent quarterly releases to financial year reporting with more timely publication, within three rather than four months of the reporting period.

Future release dates will be announced via the Employment Support Official Statistics homepage:

<https://www.gov.uk/government/publications/employment-programme-official-statistics> and ONS release calendar found via this link: <http://www.statistics.gov.uk/hub/release-calendar/index.html>

2.6.3. Definitions

For full definitions see background information note available via this link

<https://www.gov.uk/government/publications/work-programme-official-statistics-background-information-note>

2.6.4. Work Programme referral points and Payment Groups.

Claimants have different referral points to the Work Programme depending on their circumstances, such as age and benefit type. See table below for a summary of the different Payment Groups and referral points.

Mandatory Payment Groups

Participant	Entry/Access Point	PG	Participation
JSA Claimants aged 18 to 24.	Required from 9 months	PG 1	Mandatory
JSA Claimants aged 25 and over.	Required from 12 months	PG 2	Mandatory
JSA 18 year old NEET Participants.	Required from 3 months	PG 3	Mandatory
JSA Repeaters.	Required from 3 months	PG 3	Mandatory
JSA Ex-IB Participants.	Required from 3 months	PG 4	Mandatory
JSA Early Access Participants.	Optional from 3 months	PG 3	Mandatory
JSA Prison Leaver	Required from Day One of release from prison or the first date of claim if made within 13 weeks	PG 9	Mandatory
ESA (IR) WRAG with 3 Month Prognosis.	Required from WCA Outcome	PG 6	Mandatory
ESA (IR) WRAG with 6 Month Prognosis.	Required from WCA Outcome	PG 6	Mandatory
ESA (IR) Ex-IB WRAG with 3 Month Prognosis.	Required from WCA Outcome	PG 7	Mandatory
ESA (IR) Ex-IB WRAG with 6 Month Prognosis.	Required from WCA Outcome	PG 7	Mandatory
Existing ESA (IR) WRAG with 3 or 6 Month Prognosis.	Mandatory from 10/9/12	PG 6	Mandatory
ESA (IR) WRAG with 12 Month Prognosis.	Mandatory from 12 Nov 2012	PG 6	Mandatory
ESA (c) WRAG Participants.	Optional from WCA outcome	PG 5	Mandatory

Voluntary Payment Groups

Participant	Entry/Access Point	PG	Participation
IS Participants.	Optional from benefit entitlement	PG8	Voluntary
IB Participants.	Optional	PG 8	Voluntary
ESA (IR) WRAG (with Youngest Child Under 5 OR Full-Time Carer) with 3 or 6 Month Prognosis.	Optional from WCA outcome	PG 6	Voluntary
ESA (IR) Ex-IB WRAG (with Youngest Child Under 5 OR Full-Time Carer) with 3 or 6 Month Prognosis.	Optional from WCA outcome	PG 7	Voluntary
ESA (IR) WRAG (with Youngest Child Under 5 OR Full-Time Carer) with 12 Month +.	Optional from WCA outcome	PG 5	Voluntary
ESA (c) WRAG (with Youngest Child Under 5 OR Full-Time Carer).	Optional from WCA outcome	PG 5	Voluntary
ESA (IR) Support Group.	Optional from WCA outcome	PG 6	Voluntary
ESA (IR) Ex-IB Support Group.	Optional from WCA outcome	PG 7	Voluntary
ESA (c) Support Group.	Optional from WCA outcome	PG 6	Voluntary
ESA (c) Ex-IB Support Group.	Optional from WCA outcome	PG 7	Voluntary
ESA Credit Only.	Optional from WCA outcome	PG 5	Voluntary
Pension Credit Claimants.	Optional from 12 months (claiming benefits)	PG 2	Voluntary
Pension Credit Claimants with Health Conditions.	Optional from benefit entitlement	PG 5	Voluntary

WCA - Work Capability Assessment.

Existing ESA Claimants - Where the date of a Claimant's initial WCA decision was prior to the end date for Referrals to Pathways to Work.

Notes:

(1) An exception to mandatory participation are those Claimants in receipt of JSA Credits Only. These Claimants will be given the option of accessing the Work Programme and taking part on an entirely voluntary basis from their eligible entry point. They do not have a separate Opportunity/Claimant Group or Payment Group (PG) on PRaP.

(2) Referrals to the JSA Prison Leavers Payment Group started in February 2012. Attachments to the JSA Prison Leavers Payment Group started on the 1st March 2012.

Note: Full details can be seen in Annex A at <http://www.dwp.gov.uk/docs/wp-pg-chapter-2.pdf>

2.6.5. Code of Practice for Official Statistics

In developing The Work Programme Official Statistics, DWP has acted in accordance with the Code of Practice and supporting Principles. Detailed policy statements and statement of compliance with the pre-release access to official statistics order 2008 are given below:

The Work Programme Official Statistics will undergo the formal assessment process by the Statistic Authority to determine compliance with the Code and designation with the quality mark 'National Statistics'.

DWP policy statements

DWP would like to hear your views on our statistical publications. If you use any of our statistics publications, we would be interested in hearing what you use them for and how well they meet your requirements. Please email DWP at stats-consultation@dwp.gsi.gov.uk. If you would like to receive occasional e-mails from DWP to directly inform you of documents seeking the views of users, please email general.statistics@dwp.gsi.gov.uk giving details of the DWP publications you use.

2.6.6. Other National and Official Statistics issued by the Department for Work and Pensions

Details of other National and Official Statistics produced by the Department for Work and Pensions can be found on the DWP website at the following links:

- A list of Tabulation Tools: <https://www.gov.uk/government/organisations/department-for-work-pensions/series/dwp-statistics-tabulation-tool>;
- A schedule of statistical releases over the next 12 months and a list of the most recent releases: <https://www.gov.uk/government/organisations/department-for-work-pensions/about/statistics> ;
- In accordance with the Code of Practice for Official Statistics, all DWP National Statistics are also announced via the UK Statistics Authority publication hub at: http://www.statistics.gov.uk/hub/statistics-producers/publications/index.html?newquery=*%&source-agency=Work+and+Pensions&pagetype=release-landing-page'

In addition, users can find links to DWP additional statistical analyses that have not been included in our standard publications at <https://www.gov.uk/government/organisations/department-for-work-pensions/series/ad-hoc-statistical-publications-list>

2.6.7. Revisions

Each scheduled release of Work Programme Official Statistics is subject to a complete historical revision to previous figures as well as entirely new records relating to the latest time period i.e. they are fully retrospective

The Department's policy statement describes more generally how DWP will handle revisions <https://www.gov.uk/government/publications/policy-statement-on-the-revision-of-dwp-statistics>

2.6.8. Profiles

The Office of Budget Responsibility produces an independent aggregate Claimant count projection that is the basis of the Department's forecasting of Jobseeker's Allowance. The Department produces inflow and off-flow projections consistent with this overall projection, including splits into over and under 25 age groups, using assumptions based on trends in historical data.

Indicative Claimant volumes attaching to the Work Programme from the jobseeker's allowance (JSA) 18-24 group are profiled by applying an assumption about the rate of attachment of eligible Claimants to the Department's forecast volumes of JSA 18-24 year olds that reach the 9 month threshold stage of their claims.