



Monthly publication of National Statistics on the Incidence of Tuberculosis (TB) in Cattle to end October 2013 for Great Britain

These statistics were released today, Wednesday 15 January 2014 at 09:30, with the next notice to be updated on Wednesday 12 February 2014 at 09:30.

Suspension of statistics on herds under restriction and the incidence rate from September 2011

The AHVLA have identified a problem with data recording in their Sam IT system, from which data is sourced to produce these statistics. This in particular has resulted in the number of herds not officially TB free due to a bovine TB incident (non-OTF herds) being overstated since September 2011. A number of herds have continued to be incorrectly reported in these statistics as being not officially TB free, when in fact TB restrictions had been lifted during this period. Further investigations are underway to verify the extent and scale of the problem, however it can be expected that this data series will be revised significantly downwards for 2012 and 2013.

The AHVLA have also advised that there is a possibility this problem could have affected the incidence rate. Whilst it is unlikely that it has been affected to any significant degree, if at all, as a precautionary measure the publication of the incidence rate and its component parts (herd incidents and tests on officially TB free herds) has also been suspended pending further investigation.

As a temporary measure these statistics are shown as “na” from September 2011 onwards. Revised figures will be published as soon as the AHVLA have corrected the data in Sam, revised figures have been produced, and quality assurance checks have been completed.

The problem identified only affects the reporting of TB statistics. There has been no impact on operational activities. All field based activities have been properly undertaken and no herds have been mistakenly placed under restrictions, nor have any cattle been slaughtered unnecessarily. TB surveillance and disease control regimes have continued to operate normally and no livestock businesses should have been impacted in any way.

The key points relating to October 2013 are :-

- Short term changes in these statistics should be considered in the context of long term trends. The charts and tables in this statistical notice illustrate how the trend in bovine TB incidence has changed since 1996.
- The number of cattle compulsorily slaughtered as reactors or direct contacts was 27,474 during January to October 2013, compared to 31,143 during January to October 2012.

Enquiries to :- tbstatistics@defra.gsi.gov.uk
Media Enquiries to :- 0207 238 6007 (Press Office)

Figure 1: Number of officially TB free herd status being withdrawn incidents, as a percentage of tests on officially TB free herds :-

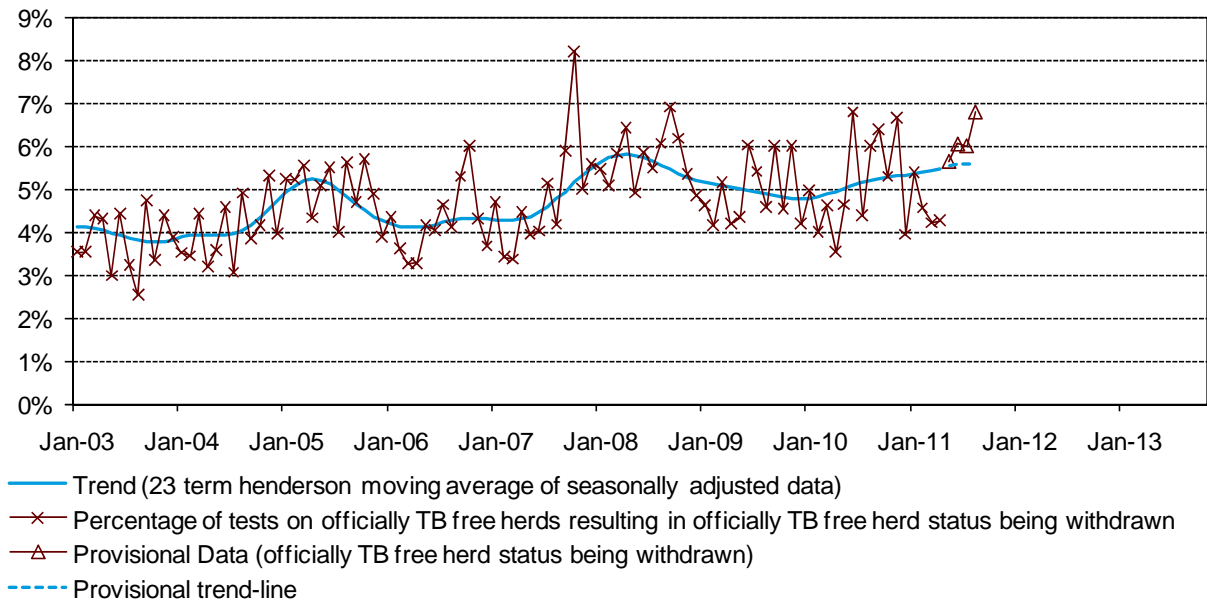
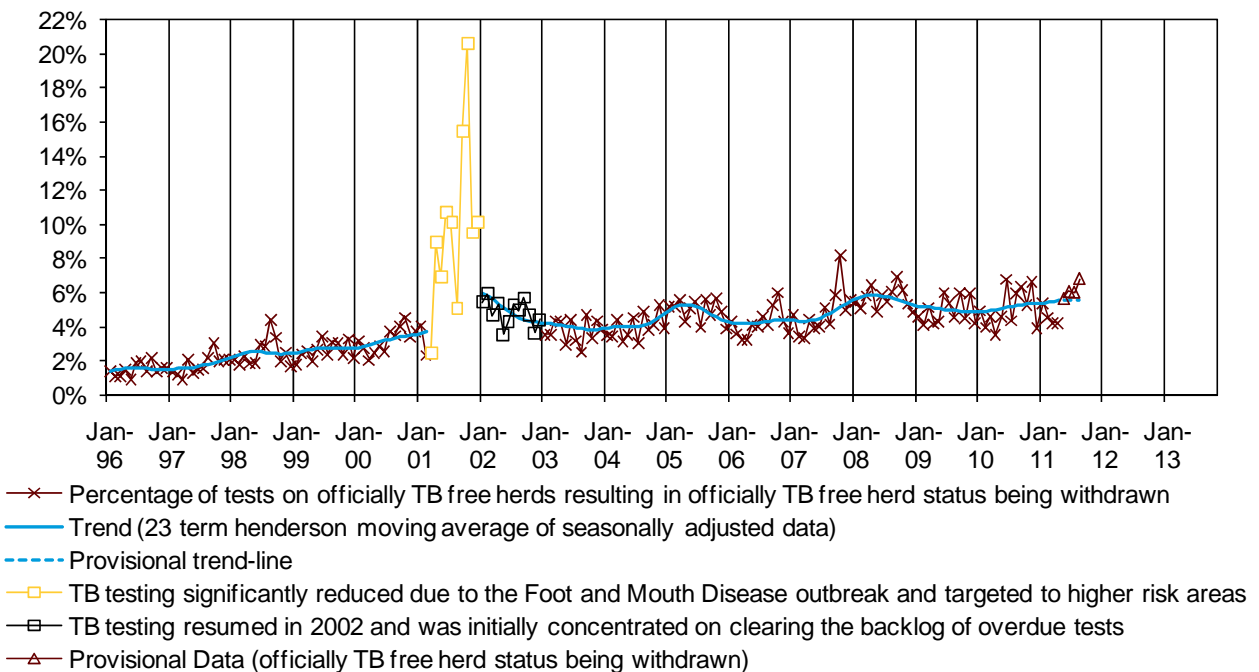


Figure 2: Number of officially TB free herd status being withdrawn incidents, as a percentage of tests on officially TB free herds :-



The charts published in this statistical notice, together with the equivalent figures from January 1996 onwards, are also available in spreadsheet format on the Defra web site at :- <https://www.gov.uk/government/publications/incidence-of-tuberculosis-tb-in-cattle-in-great-britain>. Visit the second link (MS Excel spreadsheet) entitled "Incidence of TB in cattle in Great Britain - GB dataset".

Methodology

For a description of the data sources and methodology used in the calculation of the TB statistics, together with notes on data revisions policy etc. Refer to the Annex 1 document at :- https://www.gov.uk/government/uploads/system/uploads/attachment_data/file/264371/bovinetb-annex-11dec13.pdf

Further Information

1. This statistical notice and a wide range of other statistics are available on the internet at - <https://www.gov.uk/government/organisations/department-for-environment-food-rural-affairs/about/statistics>

TABLE 1: TB INCIDENTS IN GREAT BRITAIN - HERDS

		Total tests on herds	Herds not Officially TB free due to a bovine TB incident (non-OTF Herds)	Tests on officially TB free herds (OTF)	New herd incidents (NHI)	NHI of which: officially TB free herd status withdrawn (OTFW)	Number of OTFW incidents as a percentage of tests on officially TB free herds
		(1)	(2)	(3)	(4)	(5)	(6)
1996		36,314	1,589	34,812	1,075	490	1.4%
1997		34,065	1,632	32,295	1,195	540	1.7%
1998		37,046	2,077	34,502	1,514	787	2.3%
1999		41,365	2,374	38,338	1,661	967	2.5%
2000		40,669	2,482	37,184	1,738	1,135	3.1%
2001	*	13,187	1,697	11,118	802	571	5.2%
2002	**	49,709	4,167	43,641	3,323	2,042	4.7%
2003		56,208	5,460	47,568	3,214	1,789	3.8%
2004		56,836	5,220	49,027	3,341	1,934	4.0%
2005		55,887	5,669	46,725	3,665	2,308	4.9%
2006		64,457	5,859	56,051	3,530	2,303	4.1%
2007		64,145	6,582	54,856	4,188	2,546	4.7%
2008		66,432	7,935	54,854	5,011	3,093	5.6%
2009	(prov)	72,205	8,386	58,894	4,599	2,847	4.9%
2010	(prov)	74,474	7,964	61,587	4,723	3,013	4.9%
2011	(prov)	76,659	n/a	n/a	n/a	n/a	n/a
2012	(prov)	88,574	n/a	n/a	n/a	n/a	n/a
2013	(prov)	71,371	n/a	n/a	n/a	n/a	n/a
2011	Jan	(prov) 7,830	3,881	6,531	538	350	5.4%
	Feb	(prov) 7,910	4,025	6,653	464	302	4.6%
	Mar	(prov) 8,615	4,166	7,486	510	312	4.2%
	Apr	(prov) 7,035	4,145	5,694	397	241	4.3%
	May	(prov) 6,142	4,201	4,898	467	270 - 285	5.5% - 5.8%
	Jun	(prov) 4,675	4,123	3,415	347	202 - 212	5.9% - 6.2%
	Jul	(prov) 4,656	4,011	3,388	300	183 - 225	5.4% - 6.6%
	Aug	(prov) 4,231	3,866	3,209	292	188 - 248	5.9% - 7.7%
	Sep	(prov) 5,899	n/a	n/a	n/a	n/a	n/a
	Oct	(prov) 6,009	n/a	n/a	n/a	n/a	n/a
	Nov	(prov) 6,564	n/a	n/a	n/a	n/a	n/a
	Dec	(prov) 7,093	n/a	n/a	n/a	n/a	n/a
2012	Jan	(prov) 8,194	n/a	n/a	n/a	n/a	n/a
	Feb	(prov) 9,061	n/a	n/a	n/a	n/a	n/a
	Mar	(prov) 11,718	n/a	n/a	n/a	n/a	n/a
	Apr	(prov) 7,891	n/a	n/a	n/a	n/a	n/a
	May	(prov) 7,306	n/a	n/a	n/a	n/a	n/a
	Jun	(prov) 5,425	n/a	n/a	n/a	n/a	n/a
	Jul	(prov) 5,064	n/a	n/a	n/a	n/a	n/a
	Aug	(prov) 5,421	n/a	n/a	n/a	n/a	n/a
	Sep	(prov) 5,881	n/a	n/a	n/a	n/a	n/a
	Oct	(prov) 6,816	n/a	n/a	n/a	n/a	n/a
	Nov	(prov) 9,061	n/a	n/a	n/a	n/a	n/a
	Dec	(prov) 6,736	n/a	n/a	n/a	n/a	n/a
2013	Jan	(prov) 8,747	n/a	n/a	n/a	n/a	n/a
	Feb	(prov) 9,000	n/a	n/a	n/a	n/a	n/a
	Mar	(prov) 9,251	n/a	n/a	n/a	n/a	n/a
	Apr	(prov) 8,081	n/a	n/a	n/a	n/a	n/a
	May	(prov) 7,354	n/a	n/a	n/a	n/a	n/a
	Jun	(prov) 5,083	n/a	n/a	n/a	n/a	n/a
	Jul	(prov) 5,079	n/a	n/a	n/a	n/a	n/a
	Aug	(prov) 5,543	n/a	n/a	n/a	n/a	n/a
	Sep	(prov) 5,977	n/a	n/a	n/a	n/a	n/a
	Oct	(prov) 7,256	n/a	n/a	n/a	n/a	n/a

Notes:- The data are a snapshot extracted from Sam. Data for 2009 onwards will remain provisional and subject to revision until all culture results are available and final data validation has been carried out. The herd incidence rates for the latest months are given as a range because a number of incidents are still unclassified, so data for these months should be treated as provisional results.

- (1) Herds for which tuberculin skin testing is carried out on at least one animal during the period shown. Does not include gamma tests.
- (2) Herds that had lost their OTF status at some time during the period shown due to a TB incident.
- (3) Any test carried out in an OTF herd during the period shown. Does not include gamma tests.
- (4) Herds which were previously OTF but either had cattle that reacted to a tuberculin test or had a tuberculous animal disclosed by routine meat inspection at slaughter, during the period shown.
- (5) New herd incidents (column 4) where OTF status was withdrawn from the herd.
- (6) Column 5 as a percentage of column 3.
- * Data for 2001 are not comparable with other years. During the outbreak of Foot and Mouth Disease, TB testing was significantly reduced and necessarily targeted to areas of higher risk.
- ** Data for 2002 are not comparable with other years. Testing resources were concentrated on herds overdue their tests (because of the backlog caused by the Foot and Mouth Disease outbreak).

TABLE 2: TB INCIDENTS IN GREAT BRITAIN - ANIMALS

		Total tests on herds	Total cattle tests	Cattle compulsorily slaughtered as reactors or contacts:		
				Total	Reactors	Direct contacts
		(1)	(2)	(3)	(4)	(5)
1996		36,314	2,249,891	3,776	3,151	625
1997		34,065	2,170,630	3,384	3,017	367
1998		37,046	2,447,848	5,685	4,782	903
1999		41,365	2,825,177	6,754	5,794	960
2000		40,669	2,931,658	8,123	6,877	1,246
2001	*	13,187	1,181,861	6,156	5,200	956
2002	**	49,709	3,961,145	22,072	19,191	2,881
2003		56,208	4,474,526	23,972	20,798	3,174
2004		56,836	4,604,721	22,214	19,636	2,578
2005		55,887	4,811,699	29,231	25,627	3,604
2006		64,457	5,417,573	22,062	20,090	1,972
2007		64,145	5,753,244	26,882	25,330	1,552
2008		66,432	6,178,789	39,007	36,968	2,039
2009	(prov)	72,205	6,840,568	37,979	36,739	1,240
2010	(prov)	74,474	7,447,653	31,949	31,277	672
2011	(prov)	76,659	7,587,837	34,238	33,453	785
2012	(prov)	88,574	8,025,495	37,734	37,049	685
2013	(prov)	71,371	6,749,527	27,474	26,657	817
2011	Jan	(prov) 7,830	789,054	2,656	2,591	65
	Feb	(prov) 7,910	783,669	3,582	3,535	47
	Mar	(prov) 8,615	847,824	3,154	3,116	38
	Apr	(prov) 7,035	752,330	2,604	2,562	42
	May	(prov) 6,142	559,750	2,881	2,836	45
	Jun	(prov) 4,675	458,101	3,180	2,939	241
	Jul	(prov) 4,656	489,866	2,454	2,417	37
	Aug	(prov) 4,231	402,353	2,619	2,573	46
	Sep	(prov) 5,899	581,614	2,520	2,467	53
	Oct	(prov) 6,009	559,254	2,129	2,050	79
	Nov	(prov) 6,564	680,094	3,164	3,108	56
	Dec	(prov) 7,093	683,928	3,295	3,259	36
2012	Jan	(prov) 8,194	720,196	2,580	2,537	43
	Feb	(prov) 9,061	782,134	3,769	3,714	55
	Mar	(prov) 11,718	990,541	3,124	3,090	34
	Apr	(prov) 7,891	721,749	2,805	2,774	31
	May	(prov) 7,306	579,835	3,467	3,414	53
	Jun	(prov) 5,425	489,401	2,526	2,460	66
	Jul	(prov) 5,064	477,335	3,311	3,244	67
	Aug	(prov) 5,421	486,976	2,989	2,864	125
	Sep	(prov) 5,881	547,193	2,637	2,619	18
	Oct	(prov) 6,816	655,610	3,935	3,874	61
	Nov	(prov) 9,061	931,600	3,753	3,681	72
	Dec	(prov) 6,736	642,925	2,838	2,778	60
2013	Jan	(prov) 8,747	770,747	3,200	3,141	59
	Feb	(prov) 9,000	813,824	3,104	2,997	107
	Mar	(prov) 9,251	851,276	2,973	2,860	113
	Apr	(prov) 8,081	825,215	2,726	2,690	36
	May	(prov) 7,354	664,231	3,244	2,963	281
	Jun	(prov) 5,083	480,764	2,035	2,004	31
	Jul	(prov) 5,079	511,301	2,706	2,651	55
	Aug	(prov) 5,543	535,526	2,523	2,470	53
	Sep	(prov) 5,977	575,613	2,105	2,067	38
	Oct	(prov) 7,256	721,030	2,858	2,814	44

Notes: The data are a snapshot extracted from Sam. Data for 2009 onwards will remain provisional and subject to revision each month until all culture results are available and final data validation has been carried out.

- (1) Herds in which tuberculin skin testing was carried out in at least one animal during the period shown. Does not include gamma tests. (same as column 1 in Table 1).
- (2) Count of the number of tests on cattle. An individual animal could be tested more than once in each time period.
- (3) Animals compulsorily slaughtered because they reacted to the tuberculin skin test or because they were considered to be direct contacts (see below). Not all of these animals showed evidence of *Mycobacterium bovis* infection at post-mortem examination.
- (4) An animal which was compulsorily slaughtered because it responded to the tuberculin skin test in a way that was consistent with it being infected with *Mycobacterium bovis*.
- (5) An animal in an OTFW incident that, although not a test reactor, was considered to have been exposed to *Mycobacterium bovis* and compulsorily slaughtered.
- * Data for 2001 are not comparable with other years. During the outbreak of Foot and Mouth Disease, TB testing was significantly reduced and necessarily targeted to areas of higher risk.
- ** Data for 2002 are not comparable with other years. Testing resources were concentrated on herds overdue their tests (because of the backlog caused by the Foot and Mouth Disease outbreak).