



Ministry of
JUSTICE

**Population in custody
monthly tables
April 2009
England and Wales**

Ministry of Justice
Statistics bulletin

Published 29 May 2009

Population in custody April 2009 – key points

Population in custody

- The population in custody on 30 April 2009 was 83,246, a rise of 449 from a year earlier. The population in prisons was 82,794 (a rise of 475 from a year earlier), in Secure Training Centres (STCs) it was 257 and in Secure Children's Homes (SCHs) it was 195.

Population in prison

- The male prison population increased by 1 per cent (up 666) to 78,511 and the female prison population decreased 4 per cent (down 191) to 4,283 in April 2009 compared to April 2008.
- The remand population in prison fell slightly from 13,110 in April 2008 to 13,076 in April 2009 (down 34). Within this total, the untried population increased 3 per cent (up 249) to 8,549 and the convicted unsentenced population went down 6 per cent (down 283), to 4,527.
- Amongst the remand population the changes since April 2008 by offence group were all less than 100 apart from drug offences which dropped by 10 per cent (down 196) and robbery and violence against the person which rose 10 per cent (up 128) and 6 per cent (up 188) respectively.
- There were 68,078 sentenced⁽¹⁾ prisoners at 30 April 2009, an increase of 1 per cent (up 464) from a year earlier. There were increases for those serving indeterminate sentences (Life sentences and Indeterminate sentences for Public Protection) which increased by 11 per cent (up 1,265) and for those serving sentences of 1 year to less than 4 years which increased by 1 per cent (up 302). There were falls for those serving a sentence of less than or equal to 6 months (down 648, 11 per cent), and greater than 6 and less than 12 months (down 339, 12 per cent). The falls for sentences of less than 12 months were against a relatively high short-sentenced population a year ago.
- Amongst the sentenced⁽¹⁾ prison population the largest increases were for violence against the person (up 1,223, 7 per cent) and sexual offences (up 349, 5 per cent) from April 2008. The largest decreases since April 2008 were in those serving sentences for motoring offences (down 273, 19 per cent), theft and handling (down 342, 9 per cent) and other offences (down 411, 6 per cent).
- The adult population in prison was 71,171 at 30 April 2009, an increase of 1 per cent (up 856) from a year earlier. Over the same time period the number of 15 to 17 year olds fell 12 per cent (down 297) to 2,126 and the young adult prison population fell 1 per cent (down 84) to 9,497 at 30 April 2009.
- The prison population was 111 per cent of the 'In Use CNA' (74,648) at 30 April 2009.

(1) Includes recalls and excludes fine defaulters

Figure A: Remand population by offence group

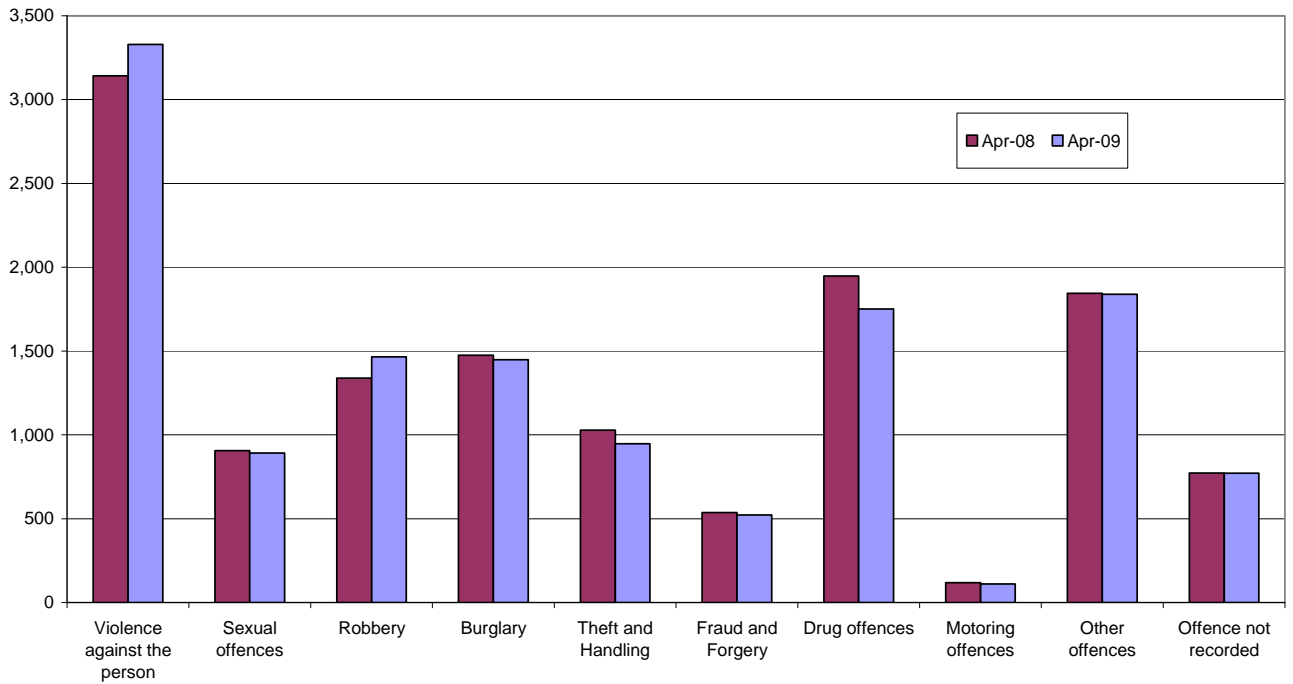
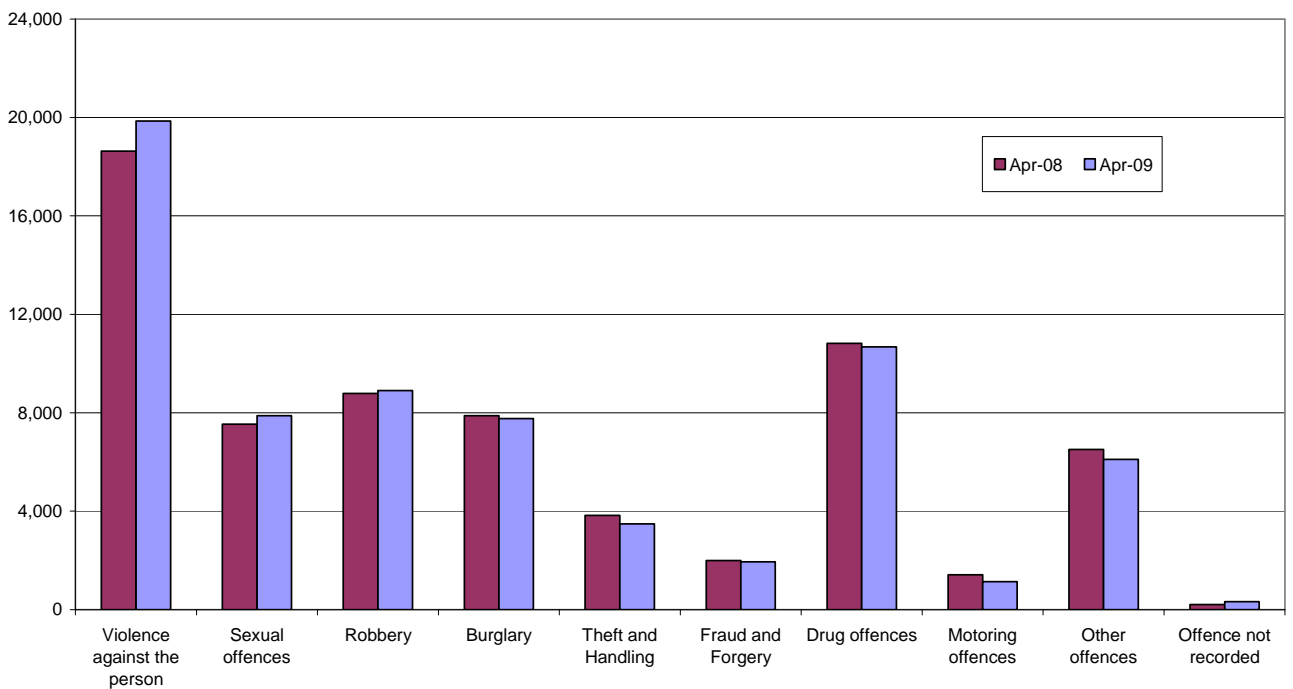


Figure B: Immediate custodial sentenced population by offence group



Notes

Data sources and quality

The data presented in this brief are drawn from the prison administrative IT systems. Although care is taken when processing and analysing the returns, the detail collected is subject to the inaccuracies inherent in any large-scale recording system. While the figures shown have been checked as far as practicable, they should be regarded as approximate and not necessarily accurate to the last whole number shown in the tables. They are fit to be used for purposes of looking at trends and for comparing the relative magnitude of components.

The prison population information has been drawn from two prison sources. The first source is the routine provision by prison establishments of records of the numbers of persons held in custody at the end of each month, broadly subdivided according to age, sex, custody type and sentence length. The records are collated and processed centrally, to produce the main estimates of the end of month population presented. The second source is the electronically held details for individual inmates such as date of birth, sex, religion, ethnic origin, custody type, offence, and reception and discharge dates and, for sentenced prisoners, sentence length. These data are collected on a central computer database and are used to produce the analyses by offence group and individual year of age. They form the basis of detailed population breakdowns, supplementing the aggregates derived from the first source, to which they are scaled for consistency. A new more detailed method of scaling this information was developed in 2004.

Because the detailed population breakdowns have been scaled and also rounded to the nearest whole number, individual components may not sum to the totals.

Information on the population in STCs and SCHs has been supplied by the Youth Justice Board.

All figures are provisional pending publication of the annual Offender Management Caseload Statistics.

Definitions

Population in custody – this includes those held in prison establishments, police cells under Operation Safeguard, secure training centres (STCs) and secure children's homes (SCHs). This is a change to previous outputs (notably Prison Population Monthly Brief and Prison Statistics England and Wales) where the reference to 'population in custody' just covered those held in prison establishments and police cells. All coverage is for England and Wales.

Population in prison – this includes those held in prisons in England and Wales, including the three removal centres of Dover, Haslar and Lindholme.

Sentenced population – this includes those sentenced to an immediate custodial sentence and fine defaulters.

Immediate custodial sentence – this does not include fine defaulters.

Adult prisoners – these are prisoners aged 21 years and over.

Young adults – these are prisoners aged 18 to 20, but including 21 year old prisoners who were aged 20 or under at conviction who have not been reclassified as part of the adult population

Indeterminate sentences – these cover life sentences and indeterminate sentences for public protection (IPP).

Contact points for further information

Current and previous editions of this publication are available for download at www.justice.gov.uk/publications/populationincustody.htm

Future reports will be published on a monthly basis. Spreadsheet files of the tables contained in this document are also available for download from this address.

Press enquiries should be directed to the Ministry of Justice press office:

Tel: 020 3334 3536

Other enquiries about these statistics should be directed to:

Ministry of Justice
Offender Management and Sentencing – Analytical Services
2nd Floor Fry Building
2 Marsham Street
London
SW1P 4DF
Tel: 020 7035 3470

General enquiries about the statistical work of the Ministry of Justice can be emailed to: statistics.enquiries@justice.gsi.gov.uk

General information about the official statistics system of the UK is available from www.statistics.gov.uk

Table 1: Population in custody: by type of custody and sex

	Apr-08			Apr-09			Percentage change 2008 to 2009		
	Males	Females	Total	Males	Females	Total	Males	Females	Total
All population in custody, of which	78,160	4,637	82,797	78,845	4,401	83,246	1	-5	1
Prisons	77,845	4,474	82,319	78,511	4,283	82,794	1	-4	1
Police cells	6	0	6	0	0	0	*	*	*
SCHs	169	59	228	159	36	195	-6	*	-14
STCs	140	104	244	175	82	257	25	-21	5
All population in prison, of which	77,845	4,474	82,319	78,511	4,283	82,794	1	-4	1
Remand	12,248	862	13,110	12,314	762	13,076	1	-12	0
Untried	7,750	550	8,300	8,044	505	8,549	4	-8	3
Convicted unsentenced	4,498	312	4,810	4,270	257	4,527	-5	-18	-6
Under sentence	64,201	3,517	67,718	64,720	3,466	68,186	1	-1	1
Fine defaulter	96	8	104	98	10	108	2	*	4
Less than or equal to 6 months	5,254	519	5,773	4,664	461	5,125	-11	-11	-11
Greater than 6 months to less than 12 months	2,585	262	2,847	2,279	229	2,508	-12	-13	-12
12 months to less than 4 years	22,131	1,298	23,429	22,379	1,352	23,731	1	4	1
4 years or more (excluding Indeterminate sentences)	23,420	1,085	24,505	23,346	1,043	24,389	0	-4	0
Indeterminate sentences	10,715	345	11,060	11,954	371	12,325	12	8	11
Non-criminal prisoners	1,396	95	1,491	1,477	55	1,532	6	-42	3
All adult population in prison, of which	66,357	3,958	70,315	67,323	3,848	71,171	1	-3	1
Remand	9,796	745	10,541	9,862	650	10,512	1	-13	0
Untried	6,246	475	6,721	6,477	442	6,919	4	-7	3
Convicted unsentenced	3,550	270	3,820	3,385	208	3,593	-5	-23	-6
Under sentence	55,286	3,125	58,411	56,078	3,148	59,226	1	1	1
Fine defaulter	94	7	101	97	10	107	3	*	6
Less than or equal to 6 months	4,013	430	4,443	3,587	394	3,981	-11	-8	-10
Greater than 6 months to less than 12 months	1,874	230	2,103	1,709	203	1,912	-9	-12	-9
12 months to less than 4 years	17,595	1,120	18,715	17,903	1,202	19,105	2	7	2
4 years or more (excluding Indeterminate sentences)	21,806	1,016	22,822	21,539	987	22,526	-1	-3	-1
Indeterminate sentences	9,905	322	10,227	11,243	352	11,595	14	9	13
Non-criminal prisoners	1,275	88	1,363	1,383	50	1,433	8	-43	5
All 15-17 year olds in prison, of which	2,356	67	2,423	2,078	47	2,126	-12	*	-12
Remand	551	17	567	525	10	536	-5	*	-6
Untried	364	11	375	345	8	353	-5	*	-6
Convicted unsentenced	187	5	192	181	2	183	-3	*	-5
Under sentence	1,804	50	1,855	1,552	37	1,589	-14	*	-14
Fine defaulter	0	0	0	0	0	0	*	*	*
Less than or equal to 6 months	433	15	449	352	11	363	-19	*	-19
Greater than 6 months to less than 12 months	289	6	295	194	3	196	-33	*	-34
12 months to less than 4 years	869	21	890	783	13	796	-10	*	-11
4 years or more (excluding Indeterminate sentences)	133	8	140	153	6	159	15	*	14
Indeterminate sentences	80	0	80	70	4	75	-12	*	-7
Non-criminal prisoners	1	0	1	1	0	1	*	*	*
All young adults¹ in prison, of which	9,132	449	9,581	9,110	388	9,497	0	-14	-1
Remand	1,901	100	2,002	1,927	102	2,028	1	2	1
Untried	1,140	64	1,204	1,222	55	1,277	7	-14	6
Convicted unsentenced	761	37	798	704	47	751	-7	*	-6
Under sentence	7,111	342	7,452	7,090	281	7,371	0	-18	-1
Fine defaulter	2	1	3	1	0	1	*	*	*
Less than or equal to 6 months	808	73	881	725	56	781	-10	-24	-11
Greater than 6 months to less than 12 months	422	26	449	377	24	400	-11	*	-11
12 months to less than 4 years	3,667	157	3,824	3,693	137	3,830	1	-13	0
4 years or more (excluding Indeterminate sentences)	1,481	61	1,543	1,654	50	1,704	12	-18	10
Indeterminate sentences	730	23	753	641	15	655	-12	*	-13
Non-criminal prisoners	120	7	127	93	5	98	-23	*	-23

¹ Young adults are those aged 18 - 20 and those 21 year olds who were aged 20 or under at conviction who have not been reclassified as part of the adult population

* Indicates that one or both of the comparative numbers are less than 50 which could give rise to misleading percentage changes

Data Sources and Quality

These figures have been drawn from administrative IT systems which, as with any large scale recording system, are subject to possible errors with data entry and processing. See Data Sources and Quality section of report for more information.

Table 2: Population in prison by offence - remand and immediate custodial sentence

	Apr-08		Apr-09		Percentage change 2008 to 2009	
	Remand	Immediate custodial sentence	Remand	Immediate custodial sentence	Remand	Immediate custodial sentence
All prisoners	13,110	67,614	13,076	68,078	0	1
Violence against the person	3,142	18,638	3,330	19,861	6	7
Sexual offences	906	7,535	892	7,884	-2	5
Robbery	1,338	8,784	1,466	8,898	10	1
Burglary	1,475	7,887	1,448	7,766	-2	-2
Theft and Handling	1,029	3,828	946	3,486	-8	-9
Fraud and Forgery	537	1,994	522	1,943	-3	-3
Drug offences	1,947	10,817	1,751	10,679	-10	-1
Motoring offences	118	1,412	111	1,139	-6	-19
Other offences	1,844	6,515	1,839	6,104	0	-6
Offence not recorded	773	205	771	319	0	55
All male prisoners	12,248	64,105	12,314	64,622	1	1
Violence against the person	2,959	17,863	3,162	19,002	7	6
Sexual offences	895	7,485	879	7,831	-2	5
Robbery	1,281	8,489	1,410	8,563	10	1
Burglary	1,425	7,690	1,413	7,554	-1	-2
Theft and Handling	919	3,395	841	3,061	-8	-10
Fraud and Forgery	453	1,712	445	1,664	-2	-3
Drug offences	1,807	9,792	1,644	9,789	-9	0
Motoring offences	115	1,395	109	1,117	-5	-20
Other offences	1,703	6,092	1,714	5,746	1	-6
Offence not recorded	691	192	699	295	1	54
All female prisoners	862	3,509	762	3,456	-12	-2
Violence against the person	183	775	168	859	-8	11
Sexual offences	11	50	13	52	*	5
Robbery	57	295	56	335	-2	14
Burglary	50	197	36	212	*	7
Theft and Handling	110	433	105	425	-4	-2
Fraud and Forgery	84	282	78	279	-8	-1
Drug offences	141	1,024	108	891	-24	-13
Motoring offences	3	17	2	22	*	*
Other offences	142	423	126	358	-12	-15
Offence not recorded	82	13	72	23	-13	*

Table 2: Population in prison by offence - remand and immediate custodial sentence

	Apr-08		Apr-09		Percentage change 2008 to 2009	
	Remand	Immediate custodial sentence	Remand	Immediate custodial sentence	Remand	Immediate custodial sentence
All adult prisoners	10,541	58,310	10,512	59,119	0	1
Violence against the person	2,498	16,000	2,623	17,184	5	7
Sexual offences	790	7,117	773	7,464	-2	5
Robbery	814	6,555	901	6,712	11	2
Burglary	1,149	6,672	1,090	6,535	-5	-2
Theft and Handling	832	3,272	788	3,034	-5	-7
Fraud and Forgery	516	1,951	494	1,886	-4	-3
Drug offences	1,672	9,929	1,511	9,885	-10	0
Motoring offences	89	1,219	94	1,004	6	-18
Other offences	1,510	5,430	1,546	5,146	2	-5
Offence not recorded	672	165	692	270	3	64
All adult male prisoners	9,796	55,192	9,862	55,981	1	1
Violence against the person	2,346	15,362	2,491	16,453	6	7
Sexual offences	782	7,067	763	7,413	-2	5
Robbery	775	6,320	857	6,440	11	2
Burglary	1,106	6,496	1,058	6,344	-4	-2
Theft and Handling	730	2,870	696	2,637	-5	-8
Fraud and Forgery	434	1,679	420	1,610	-3	-4
Drug offences	1,551	8,973	1,417	9,033	-9	1
Motoring offences	86	1,204	93	983	8	-18
Other offences	1,390	5,066	1,443	4,818	4	-5
Offence not recorded	596	154	624	249	5	62
All adult female prisoners	745	3,118	650	3,138	-13	1
Violence against the person	152	638	132	731	-13	15
Sexual offences	8	50	10	51	*	3
Robbery	39	235	43	272	*	16
Burglary	43	176	32	190	*	8
Theft and Handling	101	402	93	396	-8	-1
Fraud and Forgery	82	272	74	276	-9	1
Drug offences	121	956	94	851	-22	-11
Motoring offences	3	15	2	21	*	*
Other offences	120	364	103	328	-14	-10
Offence not recorded	75	12	68	21	-10	*

Table 2: Population in prison by offence - remand and immediate custodial sentence

	Apr-08		Apr-09		Percentage change 2008 to 2009	
	Remand	Immediate custodial sentence	Remand	Immediate custodial sentence	Remand	Immediate custodial sentence
All aged 15-17	567	1,855	536	1,589	-6	-14
Violence against the person	141	474	140	422	-1	-11
Sexual offences	36	73	25	73	*	0
Robbery	141	506	154	432	9	-15
Burglary	76	289	87	267	15	-7
Theft and Handling	34	148	24	123	*	-17
Fraud and Forgery	2	5	3	2	*	*
Drug offences	51	96	46	78	*	-19
Motoring offences	2	26	1	20	*	*
Other offences	72	232	52	168	-28	-28
Offence not recorded	11	6	3	6	*	*
All males aged 15-17	551	1,804	525	1,552	-5	-14
Violence against the person	138	456	136	409	-1	-10
Sexual offences	36	73	25	72	*	-2
Robbery	139	495	152	422	9	-15
Burglary	74	287	86	266	17	-7
Theft and Handling	32	145	24	119	*	-18
Fraud and Forgery	2	5	3	2	*	*
Drug offences	50	91	46	76	*	-16
Motoring offences	2	26	1	20	*	*
Other offences	68	221	49	163	*	-26
Offence not recorded	10	6	3	5	*	*
All females aged 15-17	17	50	10	37	*	*
Violence against the person	3	18	4	13	*	*
Sexual offences	0	0	0	1	*	*
Robbery	2	11	2	10	*	*
Burglary	2	2	1	2	*	*
Theft and Handling	2	4	0	4	*	*
Fraud and Forgery	0	0	0	0	*	*
Drug offences	1	5	0	2	*	*
Motoring offences	0	0	0	0	*	*
Other offences	4	10	3	4	*	*
Offence not recorded	1	0	0	1	*	*

Table 3: Young population in prison: by type of custody and sex

30 April 2009

	15	16	17	Total Under 18	18	19	20	21	Total Young Adults ¹
All young population in prisons, of which									
<i>Prisoners on remand</i>	57	147	332	536	650	667	634	78	2,028
Untried	40	95	217	353	419	415	384	60	1,277
Convicted unsentenced	17	51	115	183	230	252	251	18	751
<i>Prisoners under sentence</i>	157	426	1,006	1,589	1,507	2,370	2,824	669	7,371
Fine defaulter	0	0	0	0	0	1	0	0	1
Immediate custodial sentence	157	426	1,006	1,589	1,507	2,369	2,824	669	7,370
<i>Non-criminal prisoners</i>	1	0	0	1	22	27	28	21	98
All young male population in prisons, of which									
<i>Prisoners on remand</i>	57	147	322	525	623	639	589	77	1,927
Untried	40	95	209	345	405	400	359	59	1,222
Convicted unsentenced	17	51	112	181	217	239	230	18	704
<i>Prisoners under sentence</i>	157	426	969	1,552	1,446	2,265	2,722	657	7,090
Fine defaulter	0	0	0	0	0	1	0	0	1
Immediate custodial sentence	157	426	969	1,552	1,446	2,264	2,722	657	7,089
<i>Non-criminal prisoners</i>	1	0	0	1	20	26	27	21	93
All young female population in prisons, of which									
<i>Prisoners on remand</i>	0	0	10	10	27	28	46	1	102
Untried	0	0	8	8	14	15	25	1	55
Convicted unsentenced	0	0	2	2	13	13	21	0	47
<i>Prisoners under sentence</i>	0	0	37	37	61	105	102	12	281
Fine defaulter	0	0	0	0	0	0	0	0	0
Immediate custodial sentence	0	0	37	37	61	105	102	12	281
<i>Non-criminal prisoners</i>	0	0	0	0	3	1	1	0	5

¹ Young adults are those aged 18 - 20 and those 21 year olds who were aged 20 or under at conviction who have not been reclassified as part of the adult population

Data Sources and Quality

These figures have been drawn from administrative IT systems, which, as with any large scale recording system, are subject to possible errors with data entry and processing. See Data Sources and Quality section of report for more information.

Table 4: CNA and population by sex and establishment

30 April 2009

Establishment	In use CNA¹	Total Population
Males		
Acklington	946	934
Albany	567	557
Altcourse	794	1,271
Ashfield	400	360
Ashwell	184	184
Aylesbury	437	436
Bedford	321	460
Belmarsh	800	871
Birmingham	1,109	1,437
Blantyre House	122	115
Blundeston	481	516
Brinsford	545	531
Bristol	424	610
Brixton	606	752
Buckley Hall	346	379
Bullingdon	879	1,076
Bullwood Hall	180	227
Camp Hill	520	560
Canterbury	195	310
Cardiff	548	812
Castington	400	369
Channings Wood	696	724
Chelmsford	554	682
Coldingley	494	505
Cookham Wood	114	78
Dartmoor	613	626
Deerbolt	513	443
Doncaster	771	1,129
Dorchester	137	236
Dovegate	800	848
Dover	316	292
Durham	593	925
Edmunds Hill	361	367
Elmley	735	945
Erlestoke	470	467
Everthorpe	603	657
Exeter	313	528
Featherstone	663	684
Feltham	762	622
Ford	557	554
Forest Bank	800	1,144
Frankland	733	728
Full Sutton	592	582
Garth	812	821
Gartree	689	683
Glen Parva	668	781
Gloucester	225	302
Grendon/Spring Hill	527	502
Guys Marsh	520	567
Haslar	160	143
Haverigg	622	613
Hewell ²	1,173	1,402
High Down	999	1,014
Highpoint	906	921
Hindley	515	211
Hollesley Bay	345	337
Holme House	857	969
Hull	723	1,016
Huntercombe	360	291
Kennet	175	344
Kingston (Portsmouth)	175	173
Kirkham	590	586
Kirklevington Grange	283	266
Lancaster Castle	159	227
Lancaster Farms	480	506
Latchmere House	207	198

Table 4: CNA and population by sex and establishment

30 April 2009

Establishment	In use CNA¹	Total Population
Leeds	829	1,125
Leicester	210	335
Lewes	623	639
Leyhill	512	496
Lincoln	436	680
Lindholme	1,054	1,109
Littlehey	663	713
Liverpool	1,166	1,303
Long Lartin	458	431
Lowdham Grange	640	693
Maidstone	565	525
Manchester	952	1,218
Moorland Open	260	245
Moorland Closed	740	769
North Sea Camp	318	308
Northallerton	147	179
Norwich	447	521
Nottingham	379	550
Onley	710	649
Parc	838	1,199
Parkhurst	449	494
Pentonville	813	1,083
Peterborough	480	607
Portland	579	598
Preston	453	741
Ranby	945	1,064
Reading	190	247
Risley	1,048	1,074
Rochester	620	590
Rye Hill	600	655
Shepton Mallet	165	188
Shrewsbury	177	300
Stafford	741	734
Standford Hill	462	441
Stocken	779	804
Stoke Heath	562	563
Sudbury	581	577
Swaleside	808	826
Swansea	230	420
Swinfen Hall	604	619
The Mount	747	763
The Verne	572	582
The Wolds	320	381
Thorn Cross	322	288
Usk/Prescoed	320	419
Wakefield	752	731
Wandsworth	1,086	1,637
Warren Hill	222	203
Wayland	955	1,000
Wealstun	505	518
Wellingborough	638	638
Werrington	160	128
Wetherby	408	381
Whatton	776	833
Whitemoor	464	446
Winchester	499	686
Woodhill	641	838
Wormwood Scrubs	1,176	1,190
Wymott	1,081	1,131
TOTAL	70,041	78,511

Table 4: CNA and population by sex and establishment

30 April 2009

Establishment	In use CNA¹	Total Population
Females		
Askham Grange	126	109
Bronzefield	450	423
Downview	358	345
Drake Hall	315	260
East Sutton Park	95	92
Eastwood Park	326	333
Foston Hall	264	241
Holloway	500	435
Low Newton	298	284
Morton Hall	392	347
New Hall	393	373
Peterborough	360	337
Send	282	268
Styal	448	436
TOTAL	4,607	4,283
Male and female establishment total	74,648	82,794
Police cells total	*	0
Establishment and police cell total	74,648	82,794

¹ In Use CNA - Certified Normal Accommodation that is available for immediate use, excludes damaged cells, cells affected by building works and cells taken out of use due to staff shortages

² HMP Hewell was created by an amalgamation of the three former prisons, Blakenhurst, Brockhill and Hewell Grange on 25 June 2008

* On 30th April 2009 up to 400 police cells available under operation safeguard which are not included in the CNA figure

Data Sources and Quality

These figures have been drawn from administrative IT systems which, as with any large scale recording system, are subject to possible errors with data entry and processing. See Data Sources and Quality section of report for more information.

© Crown copyright
Produced by the Ministry of Justice

Alternative formats are available on request from statistics.enquiries@justice.gsi.gov.uk