

24th February 2011

Coverage: England

Theme: Children,
Education and Skills

Issued by

Department for Education
Sanctuary Buildings
Great Smith Street
London SW1P 3BT

Telephone:

Press Office

020 7925 6789

Public Enquiries

0870 000 2288

Statistician

Michael Greer

0114 274 2462

Email

info@education.gsi.gov.uk

Internet

<http://www.education.gov.uk/rsgateway/DB/STR/d000987/index.shtml>

NEET Statistics - Quarterly Brief February 2011

Introduction

This note sets out the available statistics on young people Not in Education, Employment or Training (NEET) and young people Not in Education or Training (NET) from various sources.

The authoritative national estimates of NEET and NET rates are published annually in the Statistical First Release (SFR) 'Participation in Education, Training and Employment by 16-18 Year Olds in England'. However, these data are only available annually, and cannot be disaggregated to sub-national levels.

We can use information from the Labour Force survey (LFS) and Client Caseload Information system (CCIS) maintained by Local Authorities to monitor NEET at a more detailed level.

Analysis of the Labour Force Survey (LFS) allows in-year estimates to be made of NEET levels and trends as well as estimates of NEET levels for other age groups, including 16-24, 18-24 and 19-24. The LFS estimates cannot be directly compared with the headline SFR series, which is based on more detailed but less timely data.

The CCIS data allows measurement at local level and more detailed breakdowns of the NEET group to be made. However CCIS uses different definitions and relates only to those young people whose status is known so is not directly comparable with LFS or SFR measures.

The data presented covers England and is based on academic age for the LFS and SFR data series and on actual age for the CCIS regional data series.

The 5 data series presented are:

- | | |
|--------------------------------|---------------------------------------|
| a. NEET SFR series | (latest data end 2009) ¹ |
| b. NEET quarterly LFS series | (latest data Quarter 4 2010) |
| c. CCIS data at regional level | (latest data Nov 09 – Jan 10 average) |
| d. NET SFR series | (latest data end 2009) ¹ |
| e. NET quarterly LFS series | (latest data Quarter 4 2010) |

Section 1- Trends. Focuses on the key trends in the NEET and NET data series for 16-18 year olds.

Section 2 - Segmentation. Splits down the 16-18 year old NEET group into identifiable groups.

Section 3- Methodology and Notes. Explains the methodology used to derive the different series, and gives guidance on their usage.

Section 4- Tables. Contains four tables showing numbers and percentages for the key data series on NET and NEET.

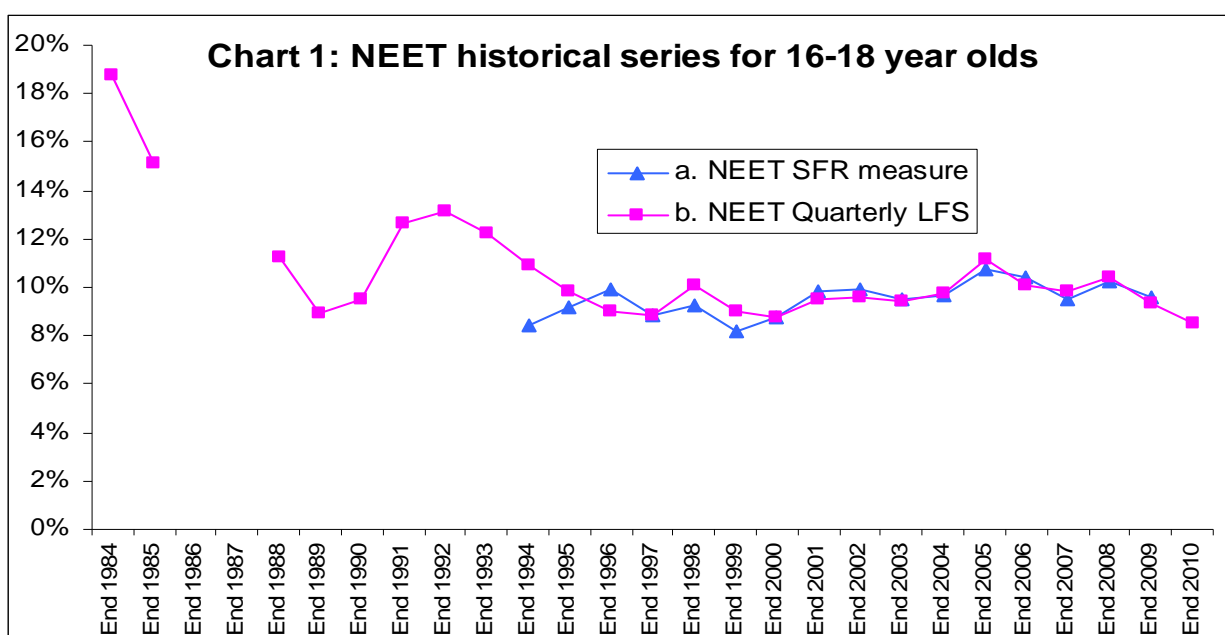
¹ The figures relating to the SFR series for NEET and NET are calculated using revised figures for 17 year olds at end 2009 as announced on the DfE Research and Statistics Gateway here: <http://www.education.gov.uk/rsgateway/index.shtml>

1. Trends

Historical Context

Understanding the historical trends in NEET rates is an important part of placing current performance in perspective. In order to do so, we have to use historical LFS data that is not directly comparable with any other series in this note, and so should be used as context only. Unfortunately, due to data issues, estimates for 1986 and 1987 are unavailable. The chart below also shows the NEET SFR measure for comparison.

NEET rates amongst 16-18 year olds were much higher than their current levels in the 1980s. The peak in 2005 was relatively high by the standards of the last 10 years, but the current level is not far off the long run average.



Source: Statistical First Release (SFR) 'Participation in Education, Training and Employment by 16-18 Year Olds in England' and analysis of Labour Force Survey.

Note on LFS estimates: Annual data sets are used for 1984 to 1991.

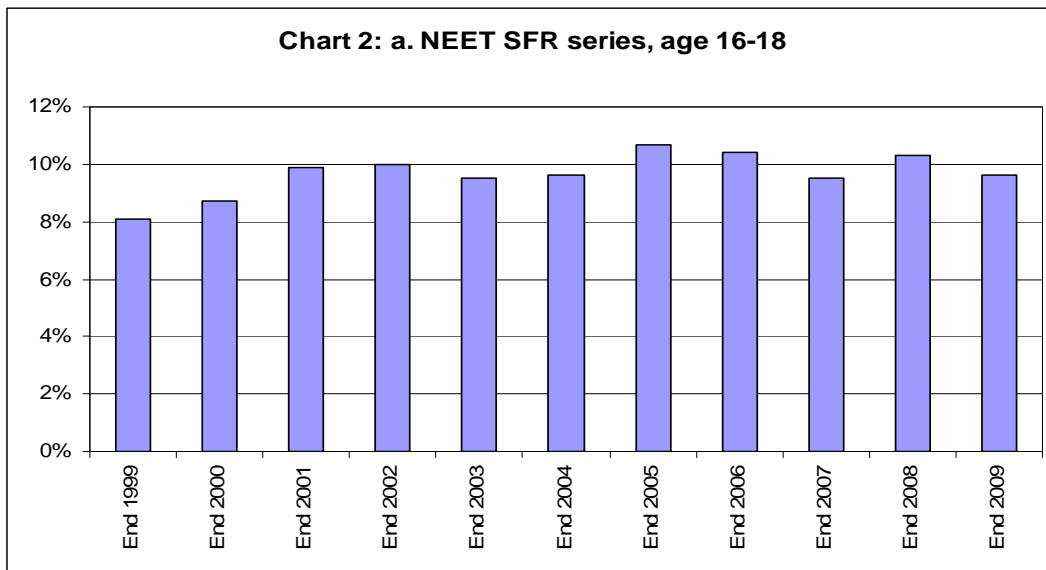
Quarter 4 data is used from 1992 onwards.

Between 1992 and 1994 the data does not exclude individuals answering yes to the qulnow variable, and between 1995 and 1999 individuals sampled in December were not asked the qulnow variable. This may mean that between 1992 and 1999 the proportion NEET is very slightly over-estimated.

a. NEET SFR series (last updated – June 2010)

The Department's Statistical First Release (SFR) 'Participation in Education, Training and Employment by 16-18 Year Olds in England' is the primary source of national data on 16-18 year olds NEET.

Despite participation in education and training amongst 16-18 year olds rising consistently since 2003, causing the size of the NET group to fall, the proportion of the cohort who are NEET has remained broadly stable since 2003 (at around 10% ± 1%). This is because the increase in the proportion of 16-18 year olds in education and training (+ 6.8 percentage points since 2003) has been counter-balanced by a fall in the proportion of 16-18 year olds in employment (-15.6 percentage points since 2003). The overall effect is for the NEET rate to remain stable because around half of the drop in employment reflects a shift from young people being both in employment and education to being in education full-time.

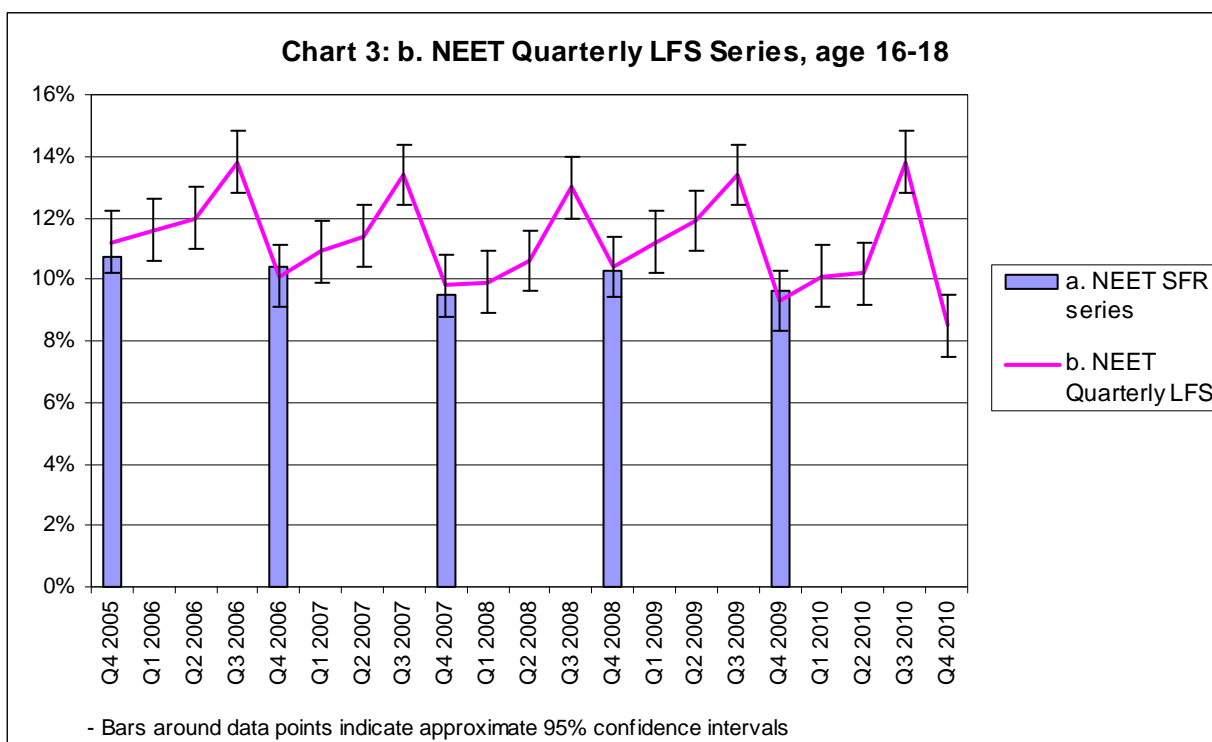


Source Statistical First Release (SFR) 'Participation in Education, Training and Employment by 16-18 Year Olds in England'

b. NEET quarterly LFS series (last updated February 2011)

We can monitor trends in NEET rates between the publications of the SFR series using quarterly LFS data.

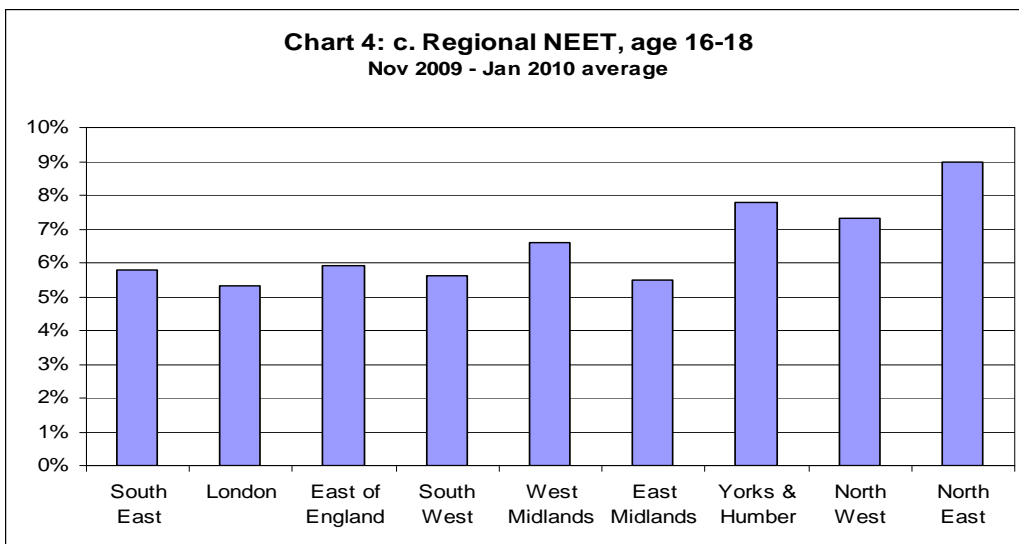
The trend data for 16-18 year olds shows seasonal patterns of lower rates in autumn (Quarter 4, October to December) followed by a gradual rise in spring and early summer (Quarters 1 & 2, January to June) with a peak in late summer (Quarter 3, July to September), reflecting the academic year. The latest data shows that the proportion of 16-18 year olds NEET has decreased by 0.7 percentage points to 8.5% in the fourth quarter of 2010, compared to the fourth quarter of 2009.



Source: Quarterly Labour Force Survey

c. Regional NEET (last updated May 2010)

The regional picture on 16-18 NEET is taken from Local Authorities' Client Caseload Information System (CCIS), so is not directly comparable with other series presented here. CCIS data shows a lower percentage NEET than either the SFR or LFS, as there are a number of differences in the definitions used. For example, it is based on calendar age and young people taking a formal gap year or in custody are not counted as NEET in this regional data.

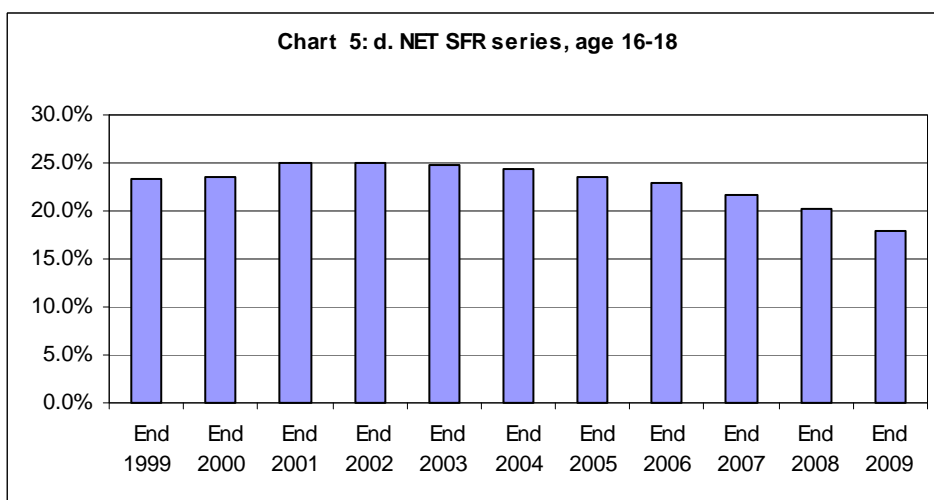


Source: CCIS data

Note: Local Authority CCIS data are published annually on the DfE website: [Link Here](#); regional NEET estimates for 16-24 year olds based on the LFS are now published as supplementary tables alongside this Quarterly Brief: [Link Here](#).

d. NET SFR series (last updated June 2010)

When looking at NEET data, it is also important to contextualise it with data on the proportion of young people Not in Education or Training (NET). This data is also taken from the Statistical First Release (SFR) 'Participation in Education, Training and Employment by 16-18 Year Olds in England'.



Source: Statistical First Release (SFR) 'Participation in Education, Training and Employment by 16-18 Year Olds in England'

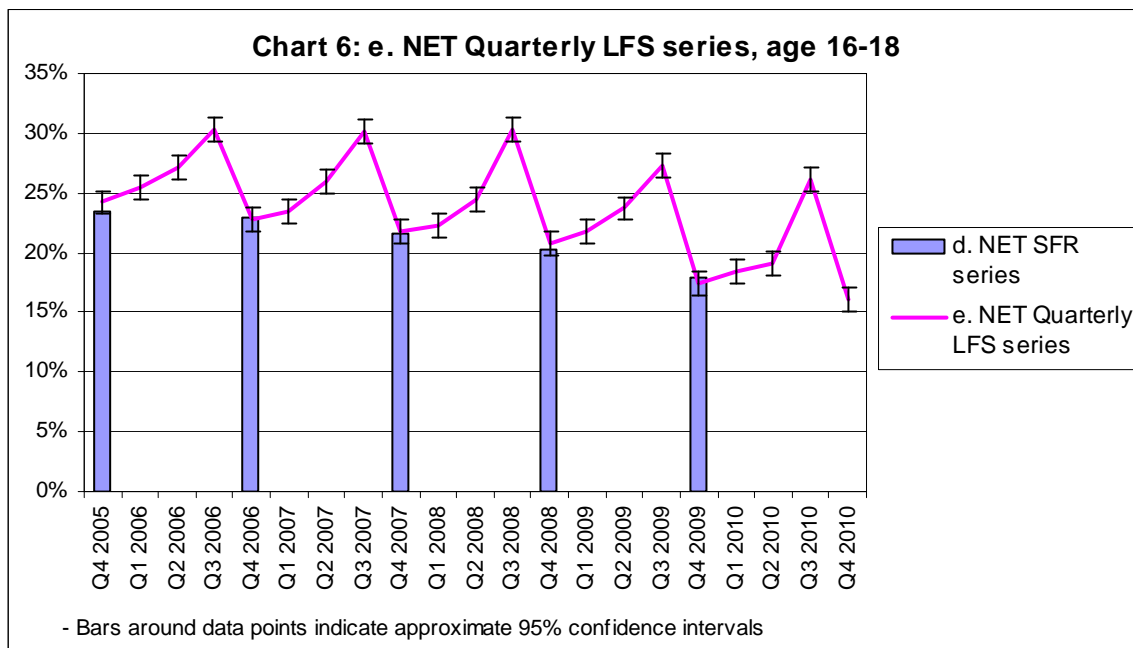
The latest data, for end 2009, shows the largest fall in the 16-18 year old NET rate since 1991, and the seventh successive annual fall since 2002. Despite the increased participation in education and

training, the NEET rate has remained broadly stable at 10% ±1. This is due to reduced employment amongst the NET group, down from 61.6% at end 2003 to 46.4% at end 2009.

e. NET quarterly LFS series (last updated February 2011)

As with the NEET data, we can look at the in-year NET trend data using the quarterly LFS.

The same seasonal pattern to the NET figures exists as in the NEET series. The latest LFS NET rate for 16 to 18 year olds, Quarter 4 2010, is 16.0%. The Quarter 4 NET rate for 16-18 year olds has fallen for the 5th successive year, and in the latest quarter (Q4 2010) the rate was 1.4 percentage points lower than the same quarter last year.



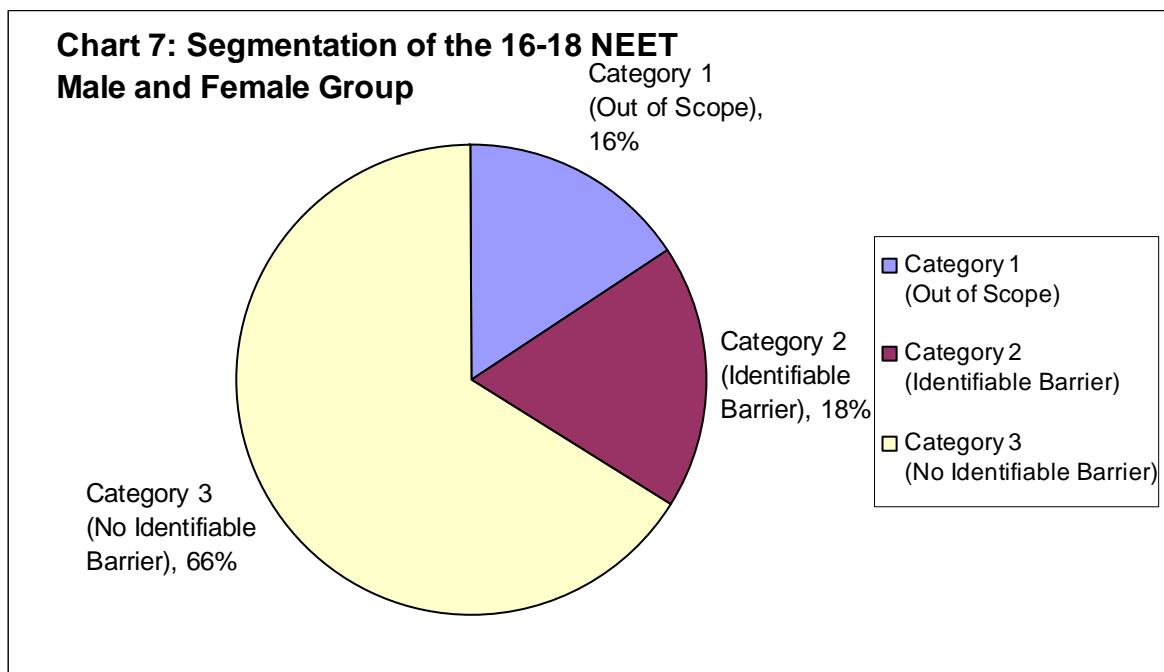
Source: Quarterly Labour Force Survey

2. Segmentation (last updated August 2010)

Using the Client Caseload Information System (CCIS) data, we can classify the NEET group into one of 3 categories.

- **Category 1 (Out of Scope):** Young people who are doing some activity which is not formally counted as education, employment or training. This will include gap year students and those undertaking voluntary work. It will also include those in custody.
- **Category 2 (Identifiable Barrier):** Young people who have an identifiable barrier to participation, as they have a child or are experiencing serious illness or disability. Some of these individuals may be perfectly able to participate now, but others may require specific help to do so.
- **Category 3 (No Identifiable Barrier):** Young people who are NEET but are not in either of the specific categories outlined above.

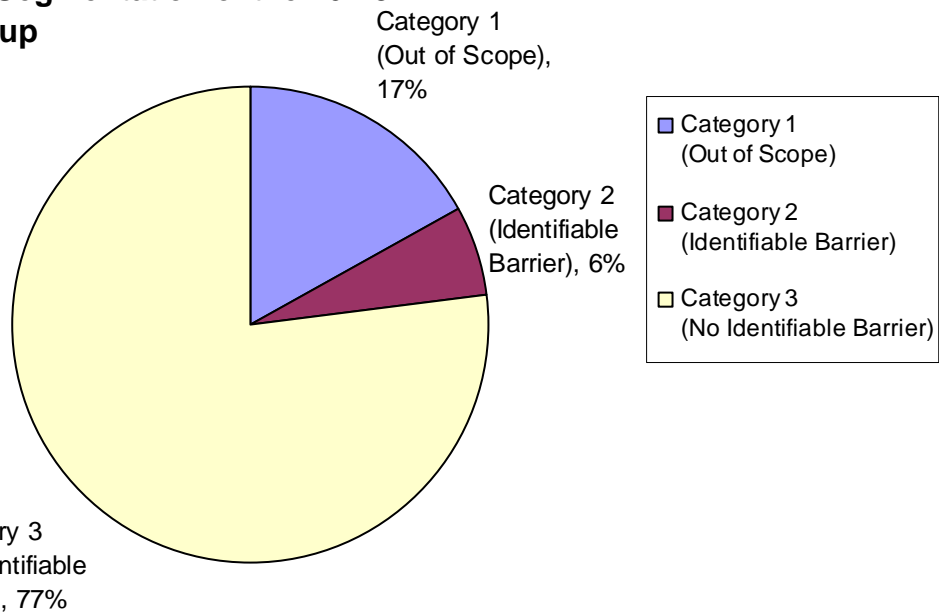
By segmenting the NEET group into these categories using the rich CCIS data² we can build up a picture of what the NEET group looks like. The proportions are shown in Charts 7 to 9. The proportions vary widely depending on gender. Chart 7 shows that overall, 66% of the 16-18 NEET group are in the No Identifiable Barrier category. However, 77% of 16-18 year old males NEET have no identified barrier to participation (Chart 8), while only 51% of females NEET fall in this category (Chart 9). Young men who are NEET are much less likely to have an identified barrier to participation (6%) than young women (35%).



Source: Internal analysis based on CCIS, UCAS data and SFR18/2010 Participation in Education, Training and Employment by 16-18 Year Olds in England.

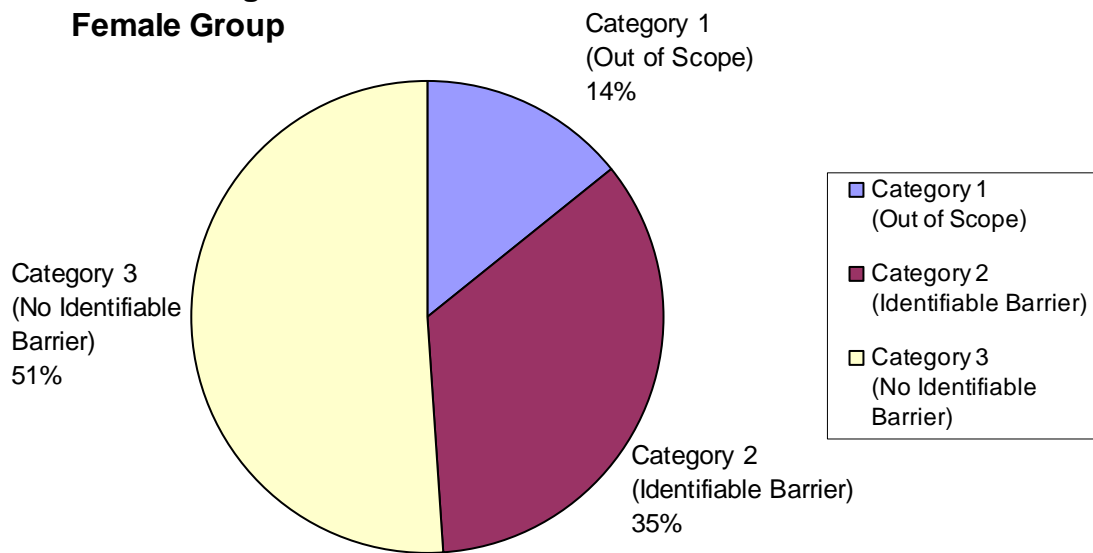
² CCIS data was used to proportionally split each age group/gender into the three segmentation categories. These proportions were then applied to the SFR NEET figures, which were then totalled to make the 16-18 group. This ensured under-reporting of certain groups in CCIS would not affect the totals.

Chart 8: Segmentation of the 16-18 NEET Male Group



Source: Internal analysis based on CCIS, UCAS data and SFR18/2010 Participation in Education, Training and Employment by 16-18 Year Olds in England.

Chart 9: Segmentation of the 16-18 NEET Female Group



Source: Internal analysis based on CCIS, UCAS data and SFR18/2010 Participation in Education, Training and Employment by 16-18 Year Olds in England.

If these percentages were applied to the total number of 16-18 year olds NEET from the SFR data, the following table would result.

Estimated number of people in each category of NEET

16-18	Female	Male	Total
Category 1 (Out of Scope)	11,000	18,000	30,000
Category 2 (Identifiable Barrier)	28,000	7,000	35,000
Category 3 (No Identifiable Barrier)	41,000	85,000	126,000
Total	80,000	110,000	191,000

Source: Internal analysis based on CCIS, UCAS data and SFR18/2010 Participation in Education, Training and Employment by 16-18 Year Olds in England

Categories may not sum to the total due to independent rounding

3. Methodology and notes

a. NEET SFR series

Description	This data is the definitive measure for 16-18 NEET rates in England.
Uses	This series should be used as the national time series for 16-18 year olds NEET in England.
Geographical Coverage	England
Age coverage	Academic age 16 to 18
Published source	Statistical First Release (SFR) 'Participation in Education, Training and Employment by 16-18 Year Olds in England'
Primary sources	The Schools' Census Pupil Level Annual Schools' Census The Individualised Learner Record (ILR) Higher Education Statistics Agency (HESA). Higher Education Students Early Statistics (HESES) Labour Force Survey Mid-year estimates and projections of population from the Office for National Statistics (ONS) and the Government Actuary's Department (GAD).
Last period covered	End 2009
Last published	June 2010
Next published	June 2011 (note provisional end 2009 figures will be finalised March 2011)

b. NEET quarterly LFS series

Description	This series is a quarterly estimate of NEET amongst young people from the LFS. It is not directly comparable with the SFR measure.
Uses	This series provides more timely data on the recent trends in NEET since the last SFR. Trends should be assessed by comparing the current quarter with the same quarter in the previous year to account for seasonal effects. Quarter on quarter changes should not be quoted.
Geographical coverage	England
Age coverage	Academic age 16 to 24
Published source	Quarterly Labour Force Survey
Primary sources	Quarterly Labour Force Survey
Last Period Covered	Q4 2010
Last published	February 2011
Next published	May 2011

c. Regional NEET

Description	This series is a 3 month average snapshot estimate of the regional NEET rate taken from the Local Authority CCIS information system. It is not directly comparable with the LFS or SFR series. Because of the discrepancy in numbers between this and other measures, only percentages are reported. Unlike in the other series, young people taking a formal gap year or in custody are not counted as NEET.
Uses	This series allow us to look at the regional data used by Local Authorities to set local activity and targets on NEET. It helps us understand the data that Local Authorities base their decisions on.
Geographical Coverage	England
Age coverage	Calendar age 16 to 18
Published source	Unpublished CCIS data
Primary sources	CCIS
Last Period Covered	November 2009 – January 2010 average.
Last published	N/A
Next published	N/A

d. NET SFR series

Description	This data is the definitive measure for NET rates in England.
Uses	This series should be used as a national time series for 16-18 year olds NET in England. It should also be used as context for any NEET data.
Geographical Coverage	England
Age coverage	Academic age 16 to 18
Published source	Statistical First Release (SFR) 'Participation in Education, Training and Employment by 16-18 Year Olds in England'
Primary sources	The Schools' Census Pupil Level Annual Schools' Census The Individualised Learner Record (ILR) HE Higher Education Statistics Agency (HESA). Higher Education Students Early Statistics (HESES) Labour Force Survey Mid-year estimates and projections of population from the Office for National Statistics (ONS) and the Government Actuary's Department (GAD).
Last Period Covered	End 2009
Last published	June 2010
Next published	June 2011 (note provisional end 2009 figures will be finalised March 2011)

e. NET quarterly LFS series

Description	This series is a quarterly estimate of NET amongst young people from the LFS.
Uses	This series provides more timely data on the recent trends in NET since the last SFR. It should also be used as context for any NEET data. Trends should be assessed by comparing the current quarter with the same quarter in the previous year to account for seasonal effects. Quarter on quarter changes should not be quoted.
Geographical Coverage	England
Age coverage	Academic age 16 to 24
Published source	Quarterly Labour Force Survey
Primary sources	Quarterly Labour Force Survey
Last Period Covered	Q4 2010
Last published	February 2011
Next published	May 2011

3. Tables

Table 1(a to c): Not in Employment, Education, or Training (NEET)³								
						<i>Numbers</i>		
a. NEET SFR series	16 year olds	17 year olds	18 year olds	16-17 year olds	16-18 year olds	16-24 year olds	18-24 year olds	19-24 year olds
End 1999	40,600	42,500	62,400	83,100	145,500			
End 2000	40,700	44,200	71,300	84,800	156,100			
End 2001	48,500	58,900	75,000	107,400	182,400			
End 2002	49,100	57,800	81,500	106,900	188,400			
End 2003	49,600	49,200	84,800	98,800	183,500			
End 2004	48,800	60,500	80,500	109,300	189,800			
End 2005	50,600	70,200	92,900	120,800	213,700			
End 2006	44,600	65,000	100,100	109,600	209,700			
End 2007	35,700	61,700	94,600	97,400	191,900			
End 2008	30,800	59,700	116,400	90,500	206,900			
End 2009	25,200	49,100	116,300	74,300	190,600			
<i>Source: LFS and Admin Data Period: End 1999 to End 2009</i>								
b. NEET Quarterly LFS series	16 year olds	17 year olds	18 year olds	16-17 year olds	16-18 year olds	16-24 year olds	18-24 year olds	19-24 year olds
Q4 2005	63,000	62,000	91,000	126,000	217,000	837,000	712,000	620,000
Q1 2006	54,000	74,000	98,000	128,000	225,000	801,000	674,000	576,000
Q2 2006	56,000	73,000	105,000	128,000	233,000	851,000	723,000	618,000
Q3 2006	71,000	95,000	103,000	166,000	268,000	969,000	804,000	701,000
Q4 2006	56,000	53,000	88,000	109,000	197,000	807,000	698,000	610,000
Q1 2007	55,000	62,000	95,000	117,000	212,000	827,000	710,000	615,000
Q2 2007	56,000	67,000	99,000	123,000	222,000	833,000	710,000	611,000
Q3 2007	60,000	99,000	103,000	158,000	262,000	909,000	750,000	647,000
Q4 2007	45,000	59,000	88,000	104,000	192,000	781,000	677,000	589,000
Q1 2008	41,000	62,000	89,000	104,000	193,000	809,000	705,000	616,000
Q2 2008	45,000	65,000	99,000	110,000	209,000	837,000	727,000	628,000
Q3 2008	53,000	100,000	102,000	153,000	255,000	969,000	816,000	714,000
Q4 2008	47,000	55,000	103,000	103,000	206,000	854,000	751,000	648,000
Q1 2009	42,000	66,000	112,000	108,000	220,000	933,000	825,000	714,000
Q2 2009	52,000	74,000	109,000	125,000	234,000	956,000	831,000	722,000
Q3 2009	56,000	93,000	113,000	149,000	261,000	1,074,000	925,000	812,000
Q4 2009	34,000	49,000	94,000	83,000	177,000	895,000	812,000	718,000
Q1 2010	31,000	59,000	104,000	90,000	195,000	927,000	837,000	733,000
Q2 2010	30,000	68,000	99,000	99,000	198,000	874,000	776,000	677,000
Q3 2010	42,000	100,000	124,000	142,000	266,000	1,026,000	885,000	761,000
Q4 2010	32,000	40,000	90,000	72,000	162,000	938,000	866,000	777,000
<i>Source: Labour Force Survey Period: Q4 2005 to Q4 2010 time series</i>								
c. Regional NEET	16 year olds	17 year olds	18 year olds	16-17 year olds	16-18 year olds	16-24 year olds	18-24 year olds	19-24 year olds
South East								
London								
East of England								
South West								
West Midlands								
East Midlands								
Yorks & Humber								
North West								
North East								
<i>Source: CCIS Period: Nov 2009 - Jan 2010 average</i>								

³ The figures relating to the SFR series for NEET and NET are calculated using revised figures for 17 year olds at end 2009 as announced on the DfE Research and Statistics Gateway here: <http://www.education.gov.uk/rsgateway/index.shtml>

Table 2 (d to e): Not in Education and Training (NET)						Numbers		
d. NET SFR series	16 year olds	17 year olds	18 year olds	16-17 year olds	16-18 year olds	16-24 year olds	18-24 year olds	19-24 year olds
End 1999	77,500	111,600	226,200	189,200	415,400			
End 2000	82,700	116,300	222,400	198,900	421,300			
End 2001	90,500	132,600	236,100	223,100	459,200			
End 2002	85,300	139,900	247,700	225,200	472,900			
End 2003	85,000	132,700	260,400	217,700	478,100			
End 2004	84,400	136,400	258,400	220,800	479,200			
End 2005	76,200	134,700	258,300	210,900	469,200			
End 2006	71,200	126,700	263,700	197,900	461,600			
End 2007	61,500	119,800	255,300	181,200	436,600			
End 2008	43,600	108,500	258,200	152,100	410,300			
End 2009	31,900	81,500	242,200	113,500	355,700			
Source: LFS and Admin Data		Period: End 1999 to End 2009						
e. NET Quarterly LFS series	16 year olds	17 year olds	18 year olds	16-17 year olds	16-18 year olds	16-24 year olds	18-24 year olds	19-24 year olds
Q4 2005	85,000	123,000	262,000	208,000	470,000	2,698,000	2,490,000	2,228,000
Q1 2006	82,000	142,000	272,000	223,000	495,000	2,707,000	2,484,000	2,212,000
Q2 2006	93,000	155,000	279,000	248,000	527,000	2,870,000	2,622,000	2,343,000
Q3 2006	104,000	214,000	271,000	318,000	588,000	3,137,000	2,820,000	2,549,000
Q4 2006	78,000	112,000	256,000	191,000	447,000	2,754,000	2,563,000	2,307,000
Q1 2007	87,000	121,000	250,000	208,000	458,000	2,783,000	2,575,000	2,325,000
Q2 2007	100,000	135,000	270,000	235,000	506,000	2,890,000	2,655,000	2,384,000
Q3 2007	96,000	214,000	279,000	310,000	589,000	3,113,000	2,803,000	2,524,000
Q4 2007	70,000	117,000	237,000	187,000	424,000	2,797,000	2,610,000	2,373,000
Q1 2008	71,000	121,000	241,000	192,000	432,000	2,795,000	2,604,000	2,363,000
Q2 2008	77,000	141,000	262,000	218,000	480,000	2,918,000	2,700,000	2,438,000
Q3 2008	87,000	216,000	291,000	303,000	594,000	3,234,000	2,931,000	2,639,000
Q4 2008	62,000	102,000	245,000	164,000	410,000	2,822,000	2,658,000	2,412,000
Q1 2009	59,000	120,000	247,000	179,000	427,000	2,848,000	2,669,000	2,422,000
Q2 2009	72,000	135,000	258,000	206,000	465,000	2,916,000	2,710,000	2,451,000
Q3 2009	78,000	173,000	281,000	251,000	533,000	3,151,000	2,899,000	2,618,000
Q4 2009	42,000	82,000	209,000	124,000	333,000	2,751,000	2,627,000	2,419,000
Q1 2010	39,000	99,000	218,000	138,000	356,000	2,772,000	2,634,000	2,416,000
Q2 2010	41,000	109,000	220,000	150,000	370,000	2,782,000	2,632,000	2,412,000
Q3 2010	57,000	180,000	264,000	237,000	501,000	3,141,000	2,904,000	2,640,000
Q4 2010	40,000	62,000	203,000	101,000	304,000	2,798,000	2,696,000	2,494,000
Source: Labour Force Survey		Period: Q4 2005 to Q4 2010 time series						

Table 3 (a to c): Not in Employment, Education, or Training (NEET)⁴						Percentage		
a. NEET SFR series	16 year olds	17 year olds	18 year olds	16-17 year olds	16-18 year olds	16-24 year olds	18-24 year olds	19-24 year olds
End 1999	6.8%	7.2%	10.4%	7.0%	8.1%			
End 2000	6.7%	7.4%	12.2%	7.0%	8.7%			
End 2001	7.7%	9.6%	12.5%	8.6%	9.9%			
End 2002	7.8%	9.0%	13.1%	8.4%	10.0%			
End 2003	7.7%	7.7%	13.0%	7.7%	9.5%			
End 2004	7.3%	9.2%	12.4%	8.3%	9.6%			
End 2005	7.7%	10.4%	14.0%	9.1%	10.7%			
End 2006	6.7%	9.8%	14.7%	8.2%	10.4%			
End 2007	5.3%	9.2%	14.0%	7.3%	9.5%			
End 2008	4.7%	8.8%	17.0%	6.8%	10.3%			
End 2009	4.0%	7.4%	16.9%	5.7%	9.6%			
Source: LFS and Admin Data		Period: End 1999 to End 2009						
b. NEET Quarterly LFS series	16 year olds	17 year olds	18 year olds	16-17 year olds	16-18 year olds	16-24 year olds	18-24 year olds	19-24 year olds
Q4 2005	10.1%	9.6%	13.8%	9.8%	11.2%	14.6%	16.0%	16.4%
Q1 2006	8.8%	10.9%	15.0%	9.9%	11.6%	14.0%	15.2%	15.2%
Q2 2006	9.0%	10.8%	16.0%	9.9%	12.0%	14.8%	16.1%	16.2%
Q3 2006	10.8%	14.4%	16.3%	12.6%	13.8%	16.6%	17.8%	18.0%
Q4 2006	8.5%	8.3%	13.3%	8.4%	10.1%	13.8%	15.3%	15.7%
Q1 2007	8.2%	9.8%	14.6%	9.0%	10.9%	14.1%	15.6%	15.7%
Q2 2007	8.7%	10.5%	14.9%	9.6%	11.4%	14.2%	15.5%	15.6%
Q3 2007	9.2%	14.6%	16.3%	12.0%	13.4%	15.4%	16.4%	16.4%
Q4 2007	6.9%	9.0%	13.7%	7.9%	9.8%	13.1%	14.6%	14.7%
Q1 2008	6.3%	9.6%	13.9%	7.9%	9.9%	13.6%	15.2%	15.4%
Q2 2008	7.0%	9.7%	15.1%	8.3%	10.6%	13.9%	15.5%	15.6%
Q3 2008	8.5%	14.8%	15.5%	11.7%	13.0%	16.1%	17.4%	17.7%
Q4 2008	7.4%	8.3%	15.4%	7.9%	10.4%	14.2%	15.9%	16.0%
Q1 2009	6.5%	10.0%	17.1%	8.3%	11.2%	15.5%	17.5%	17.6%
Q2 2009	8.1%	11.2%	16.5%	9.6%	11.9%	15.8%	17.6%	17.7%
Q3 2009	8.8%	14.6%	16.7%	11.7%	13.4%	17.9%	19.6%	20.0%
Q4 2009	5.5%	7.4%	14.9%	6.5%	9.3%	14.8%	17.1%	17.4%
Q1 2010	5.0%	8.8%	16.6%	7.0%	10.1%	15.3%	17.6%	17.7%
Q2 2010	5.0%	10.2%	15.0%	7.7%	10.2%	14.5%	16.3%	16.5%
Q3 2010	6.7%	14.9%	19.5%	11.0%	13.8%	17.1%	18.7%	18.6%
Q4 2010	5.0%	6.6%	13.8%	5.8%	8.5%	15.6%	18.1%	18.8%
Source: Labour Force Survey		Period: Q4 2005 to Q4 2010 time series						
c. Regional NEET	16 year olds	17 year olds	18 year olds	16-17 year olds	16-18 year olds	16-24 year olds	18-24 year olds	19-24 year olds
South East	4.2%	5.6%	7.1%	5.0%	5.8%			
London	3.8%	5.2%	6.4%	4.6%	5.3%			
East of England	3.9%	5.4%	7.7%	4.8%	5.9%			
South West	3.7%	5.3%	7.1%	4.6%	5.6%			
West Midlands	4.3%	6.2%	8.6%	5.5%	6.6%			
East Midlands	3.5%	5.1%	7.3%	4.5%	5.5%			
Yorks & Humber	5.7%	7.5%	9.5%	6.8%	7.8%			
North West	5.0%	6.8%	9.1%	6.1%	7.3%			
North East	5.4%	8.0%	12.3%	7.0%	9.0%			
Source: CCIS		Period: Nov 2009 - Jan 2010 average						

⁴ The figures relating to the SFR series for NEET and NET are calculated using revised figures for 17 year olds at end 2009 as announced on the DfE Research and Statistics Gateway here: <http://www.education.gov.uk/rsgateway/index.shtml>

Table 4 (d to e): Not in Education and Training (NET)

Percentage

d. NET SFR series	16 year olds	17 year olds	18 year olds	16-17 year olds	16-18 year olds	16-24 year olds	18-24 year olds	19-24 year olds
End 1999	12.9%	18.9%	37.9%	15.9%	23.3%			
End 2000	13.6%	19.4%	38.0%	16.5%	23.5%			
End 2001	14.3%	21.6%	39.2%	17.9%	24.9%			
End 2002	13.5%	21.9%	39.8%	17.7%	25.0%			
End 2003	13.1%	20.8%	40.0%	16.9%	24.7%			
End 2004	12.7%	20.8%	39.8%	16.7%	24.3%			
End 2005	11.6%	20.0%	38.9%	15.9%	23.5%			
End 2006	10.7%	19.1%	38.7%	14.9%	22.9%			
End 2007	9.2%	17.8%	37.9%	13.5%	21.6%			
End 2008	6.6%	16.1%	37.7%	11.4%	20.3%			
End 2009	5.0%	12.2%	35.3%	8.7%	17.9%			
Source:		LFS and Admin Data		Period: End 1999 to End 2009				
e. NET Quarterly LFS series	16 year olds	17 year olds	18 year olds	16-17 year olds	16-18 year olds	16-24 year olds	18-24 year olds	19-24 year olds
Q4 2005	13.6%	18.9%	39.5%	16.3%	24.2%	47.0%	55.9%	58.7%
Q1 2006	13.3%	20.9%	41.7%	17.3%	25.5%	47.2%	55.9%	58.4%
Q2 2006	15.0%	23.1%	42.6%	19.2%	27.1%	49.7%	58.5%	61.2%
Q3 2006	15.9%	32.4%	43.0%	24.2%	30.3%	53.8%	62.4%	65.6%
Q4 2006	11.9%	17.6%	38.7%	14.7%	22.8%	47.1%	56.3%	59.3%
Q1 2007	13.1%	19.1%	38.6%	16.0%	23.5%	47.5%	56.4%	59.4%
Q2 2007	15.5%	21.3%	40.8%	18.4%	26.0%	49.3%	58.0%	60.9%
Q3 2007	14.8%	31.7%	43.9%	23.5%	30.1%	52.7%	61.1%	63.9%
Q4 2007	10.8%	17.9%	36.7%	14.3%	21.7%	47.0%	56.2%	59.3%
Q1 2008	10.7%	18.6%	37.6%	14.7%	22.2%	47.0%	56.1%	59.1%
Q2 2008	12.0%	21.0%	40.1%	16.6%	24.4%	48.6%	57.6%	60.4%
Q3 2008	13.9%	31.9%	44.1%	23.2%	30.3%	53.8%	62.3%	65.3%
Q4 2008	9.7%	15.4%	36.6%	12.6%	20.8%	46.9%	56.3%	59.6%
Q1 2009	9.2%	18.2%	37.9%	13.8%	21.8%	47.4%	56.8%	59.8%
Q2 2009	11.2%	20.4%	39.2%	15.9%	23.7%	48.3%	57.2%	60.2%
Q3 2009	12.2%	27.1%	41.8%	19.7%	27.3%	52.5%	61.3%	64.5%
Q4 2009	6.7%	12.4%	33.0%	9.7%	17.4%	45.5%	55.2%	58.6%
Q1 2010	6.4%	14.6%	34.7%	10.7%	18.5%	45.7%	55.2%	58.4%
Q2 2010	6.8%	16.3%	33.5%	11.7%	19.1%	46.0%	55.2%	58.7%
Q3 2010	9.2%	26.9%	41.5%	18.4%	26.1%	52.2%	61.4%	64.5%
Q4 2010	6.2%	10.1%	31.3%	8.1%	16.0%	46.4%	56.4%	60.4%
Source:		Labour Force Survey		Period: Q4 2005 to Q4 2010 time series				