

**Population in custody  
monthly tables  
March 2010  
England and Wales**

Ministry of Justice  
Statistics bulletin

Published 30 April 2010

## Population in custody March 2010: Key points

### **Resumption of Publication/Use of new data source/new subcategories of data**

- The monthly population in custody bulletin was last released on 31 July 2009 after which it was withdrawn due to technical problems relating to the supply of data for statistical purposes. This bulletin marks the resumption of the series as announced on the Ministry of Justice website [www.justice.gov.uk/publications/populationincustody.htm](http://www.justice.gov.uk/publications/populationincustody.htm)
- Following the resolution of these technical problems, figures in this bulletin are now based on a new data source and are consistent with the published weekly prison figures. In order to provide a consistent comparison, data for 2009 has also been taken from the new data source, which means that these figures will not match the monthly 2009 data published previously. The total prison population given for March 2009 is 56 higher than the figure previously published.
- There are two changes to the presentation of the data. Firstly, the numbers in each sentence length band now exclude recalls which are shown as a separate subgroup within the total sentenced population (previously recalls were included in the relevant sentence length bands). Secondly, the sentenced population groups “less than or equal to 6 months” and “Greater than 6 months to less than 12 months” have been slightly revised to “less than 6 months” and “Greater than or equal to 6 months to less than 12 months” respectively as a result of using the new data source.

### **Population in custody**

- The population in custody on 31 March 2010 was 85,600, a rise of 2,200 from a year earlier. The population in prisons was 85,200 (a rise of 2,200 from a year earlier), in Secure Training Centres (STCs) it was 270 and in Secure Children’s Homes (SCHs) it was 160.

### **Population in prison**

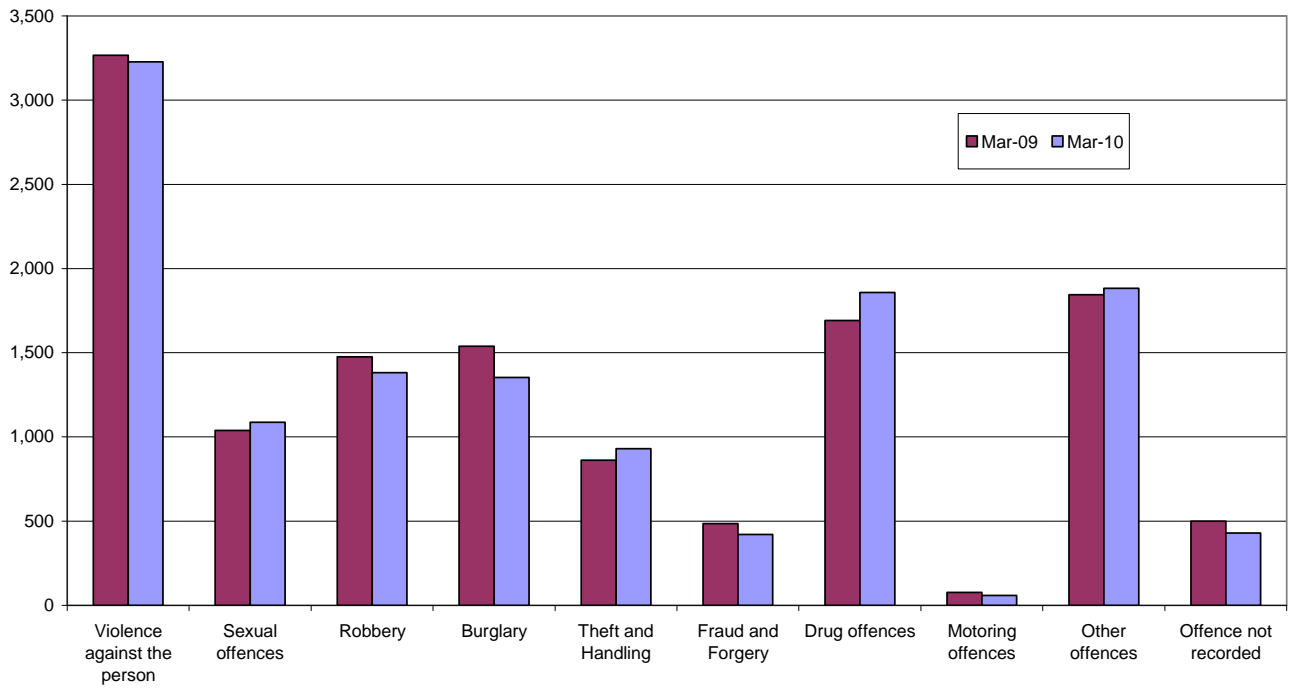
- The male prison population increased by 3 per cent (up 2,200) to 80,900 and the female prison population fell slightly (down 6) to 4,300 in March 2010 compared to March 2009.
- It was expected that the ending of the early release scheme would add between 1,000 and 1,200 to the daily prison population.
- The remand population in prison fell slightly from 12,800 in March 2009 to 12,600 in March 2010 (down 150). Within this total, the untried population fell 5 per cent (down 450) to 7,800 and the convicted unsentenced population rose 7 per cent (up 300), to 4,800.
- Amongst the remand population the largest changes since March 2009 by offence group were for drug offences (up 170, 10 per cent), theft and handling (up 70, 8 per cent) and sexual offences (up 50, 5 per cent). The largest proportionate falls since March 2009 were seen in those serving sentences for motoring offences (down 20, 23 per cent), fraud and forgery (down 70, 13 per cent) and burglary offences (down 190, 12 per cent).

- There were 71,200 sentenced<sup>1</sup> prisoners at 31 March 2010, up 2,800 from a year earlier. Those serving indeterminate sentences (Life sentences and IPPs) increased by 8 per cent (up 900) and those serving sentences of 4 years or more increased by 6 per cent (up 1,300). There was a fall for those serving a sentence equal to and greater than 6 months and less than 12 (down 110, 3 per cent). However, the number of prisoners serving a sentence of less than 6 months rose 12 per cent between March 2009 and March 2010 (up 520).
- There were 5,500 recall prisoners at 31 March 2010, down 140 from a year earlier.
- Amongst the sentenced prison population the largest increases were for other offences (up 1,000, 16 per cent), sexual offences (up 1,200, 15 per cent) and theft and handling (up 480 15 per cent) from March 2009. The largest proportionate decreases since March 2009 were for those serving sentences for motoring offences (down 180, 16 per cent), fraud and forgery (down 330, 16 per cent) and where offence was not recorded (down 400, 26 per cent).
- The adult population in prison was 73,600 at 31 March 2010, an increase of 3 per cent (up 2,300) from a year earlier. Over the same time period the number of 15 to 17 year olds fell 20 per cent (down 440) to 1,720 and the young adult prison population (see definitions) increased 5 per cent (up 420) to 9,800 at 31 March 2010.
- The prison population was 111 per cent of the 'In Use CNA' (76,540) at 31 March 2010.
- On 31 March 2010, the foreign national prison population was 11,400. This includes those held under the Immigration Act 1971 (including those in the immigration removal centres Dover, Haslar and Lindholme) as well as those held on remand or serving custodial sentences.
- The largest foreign national population at 31 March 2010 were Jamaican nationals, with a population of 960 followed by Nigeria (730), Republic of Ireland (680), Vietnam (590), Poland (670), Somalia (450), and China (430).

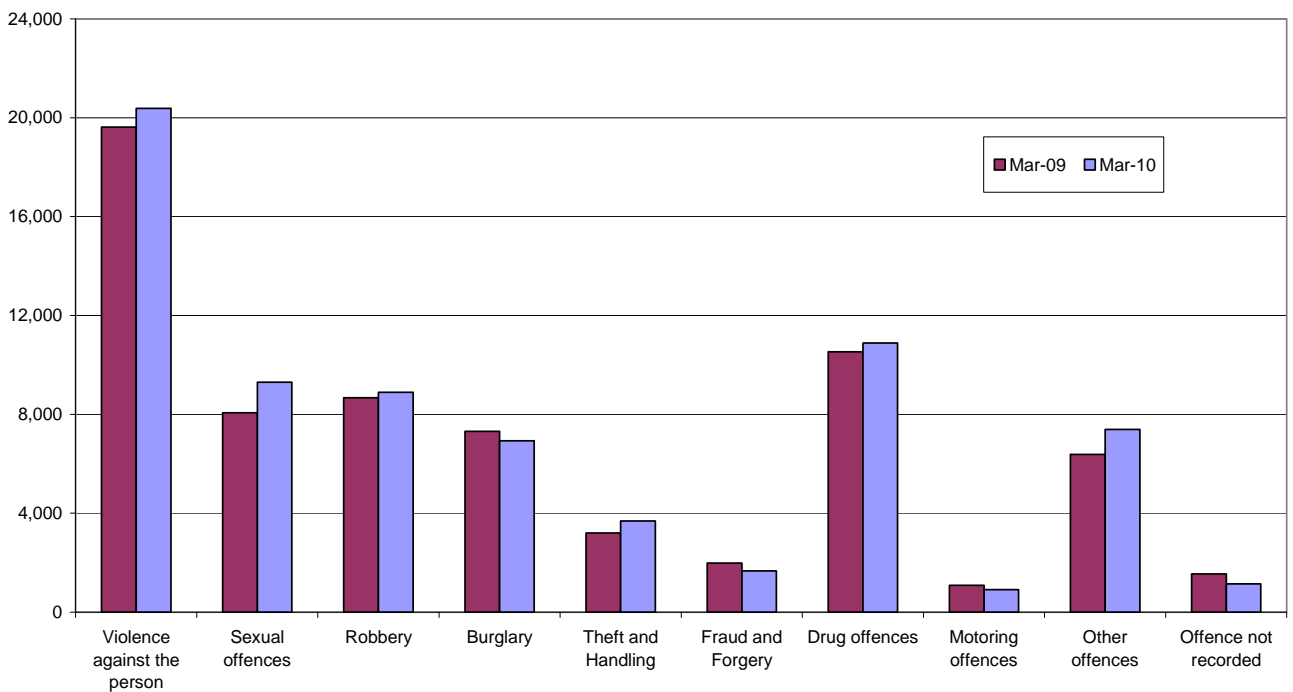
---

<sup>1</sup> Includes recalls and excludes fine defaulters (see Table 2)

**Figure A: Remand population by offence group**



**Figure B: Immediate custodial sentenced population by offence group**



## Notes

### Data sources and quality

The data presented in this brief are drawn from the prison administrative IT systems. Although care is taken when processing and analysing the returns, the detail collected is subject to the inaccuracies inherent in any large-scale recording system. While the figures shown have been checked as far as practicable, they should be regarded as approximate and not necessarily accurate to the last whole number shown in the tables. They are fit to be used for purposes of looking at trends and for comparing the relative magnitude of components.

The prison population information is now drawn from a single prison source. Although different from the source used up to June 2009, it contains the same details for individual inmates such as date of birth, sex, religion, ethnic origin, custody type, offence, and reception and discharge dates and, for sentenced prisoners, sentence length. These data are collected on a central computer database and are used to produce all the analyses in this publication.

As a different data source is now being used for this publication comparisons with data a year ago will not match with data previously published for March 2009.

Unless otherwise stated, numbers in the text have been rounded for ease of reading using the following rules:

Numbers of 100,000 and over are rounded to the nearest 1,000

Numbers from 1,000 – 99,999 are rounded to the nearest 100

Numbers from 10 – 999 are rounded to the nearest 10

Numbers under 10 are unrounded.

Information on the population in STCs and SCHs has been supplied by the Youth Justice Board.

All figures are provisional pending publication of the annual Offender Management Caseload Statistics.

### Definitions

**Population in custody** – this includes those held in prison establishments, police cells under Operation Safeguard, secure training centres (STCs) and secure children's homes (SCHs). All coverage is for England and Wales.

**Population in prison** – this includes those held in prisons in England and Wales, including the three removal centres (where people are held under immigration powers prior to removal from the UK) of Dover, Haslar and Lindholme.

**Sentenced population** – this includes those sentenced to an immediate custodial sentence and fine defaulters.

**Immediate custodial sentence** – this does not include fine defaulters.

**Adult prisoners** – these are prisoners aged 21 years and over.

**Young adults** – these are prisoners aged 18 to 20, but including 21 year old prisoners who were aged 20 or under at conviction who have not been reclassified as part of the adult population

**Indeterminate sentences** – these cover life sentences and indeterminate sentences for public protection (IPP).

**Recalls** – these are prisoners who are returned to custody having broken the terms of their licence.

### **Contact points for further information**

Current and previous editions of this publication are available for download at [www.justice.gov.uk/publications/populationincustody.htm](http://www.justice.gov.uk/publications/populationincustody.htm). Future reports will be published on a monthly basis. Spreadsheet files of the tables contained in this document are also available for download from this address.

Press enquiries should be directed to the Ministry of Justice press office:

Tel: 020 3334 3536

Email: [newsdesk@justice.gsi.gov.uk](mailto:newsdesk@justice.gsi.gov.uk)

Other enquiries about these statistics should be directed to:

Ministry of Justice  
Justice Statistics Analytical Services  
7<sup>th</sup> Floor  
102 Petty France  
London  
SW1H 9AJ  
Tel: 020 3334 5064

General enquiries about the statistical work of the Ministry of Justice can be e-mailed to: [statistics.enquiries@justice.gsi.gov.uk](mailto:statistics.enquiries@justice.gsi.gov.uk)

General information about the official statistics system of the UK is available from [www.statistics.gov.uk](http://www.statistics.gov.uk)

© Crown copyright  
Produced by the Ministry of Justice

Alternative formats are available on request from [statistics.enquiries@justice.gsi.gov.uk](mailto:statistics.enquiries@justice.gsi.gov.uk)

**Table 1: Population in custody: by type of custody and sex**

	Mar-09			Mar-10			Percentage change 2009 to 2010		
	Males	Females	Total	Males	Females	Total	Males	Females	Total
<b>All population in custody, of which</b>	<b>78,984</b>	<b>4,418</b>	<b>83,402</b>	<b>81,241</b>	<b>4,367</b>	<b>85,608</b>	<b>3</b>	<b>-1</b>	<b>3</b>
Prisons	78,653	4,296	82,949	80,894	4,290	85,184	3	0	3
Police cells	0	0	0	0	0	0	*	*	*
SCHs	163	35	198	140	19	159	-14	*	-20
STCs	168	87	255	207	58	265	23	-33	4
<b>All population in prison, of which</b>	<b>78,653</b>	<b>4,296</b>	<b>82,949</b>	<b>80,894</b>	<b>4,290</b>	<b>85,184</b>	<b>3</b>	<b>0</b>	<b>3</b>
<b>Remand</b>	<b>11,994</b>	<b>783</b>	<b>12,777</b>	<b>11,881</b>	<b>748</b>	<b>12,629</b>	<b>-1</b>	<b>-4</b>	<b>-1</b>
Untried	7,750	528	8,278	7,357	468	7,825	-5	-11	-5
Convicted unsentenced	4,244	255	4,499	4,524	280	4,804	7	10	7
<b>Sentenced</b>	<b>65,087</b>	<b>3,446</b>	<b>68,533</b>	<b>67,865</b>	<b>3,487</b>	<b>71,352</b>	<b>4</b>	<b>1</b>	<b>4</b>
Fine defaulter	98	9	107	132	22	154	35	*	44
Less than 6 months	3,870	383	4,253	4,345	428	4,773	12	12	12
Greater than & equal to 6 months to less than 12 months	3,131	289	3,420	3,004	304	3,308	-4	5	-3
12 months to less than 4 years	19,673	1,194	20,867	19,971	1,183	21,154	2	-1	1
4 years or more (excluding Indeterminate sentences)	21,315	995	22,310	22,639	982	23,621	6	-1	6
Indeterminate sentences	11,556	364	11,920	12,444	378	12,822	8	4	8
Recalls	5,444	212	5,656	5,330	190	5,520	-2	-10	-2
<b>Non-criminal prisoners</b>	<b>1,572</b>	<b>67</b>	<b>1,639</b>	<b>1,148</b>	<b>55</b>	<b>1,203</b>	<b>-27</b>	<b>-18</b>	<b>-27</b>
<b>All adult population in prison, of which</b>	<b>67,577</b>	<b>3,808</b>	<b>71,385</b>	<b>69,806</b>	<b>3,831</b>	<b>73,637</b>	<b>3</b>	<b>1</b>	<b>3</b>
<b>Remand</b>	<b>9,655</b>	<b>668</b>	<b>10,323</b>	<b>9,630</b>	<b>667</b>	<b>10,297</b>	<b>0</b>	<b>0</b>	<b>0</b>
Untried	6,266	455	6,721	6,002	423	6,425	-4	-7	-4
Convicted unsentenced	3,389	213	3,602	3,628	244	3,872	7	15	7
<b>Sentenced</b>	<b>56,456</b>	<b>3,077</b>	<b>59,533</b>	<b>59,095</b>	<b>3,115</b>	<b>62,210</b>	<b>5</b>	<b>1</b>	<b>4</b>
Fine defaulter	94	9	103	124	22	146	32	*	42
Less than 6 months	3,107	319	3,426	3,528	378	3,906	14	18	14
Greater than & equal to 6 months to less than 12 months	2,297	238	2,535	2,299	261	2,560	0	10	1
12 months to less than 4 years	15,590	1,049	16,639	15,859	1,024	16,883	2	-2	1
4 years or more (excluding Indeterminate sentences)	19,674	931	20,605	20,693	911	21,604	5	-2	5
Indeterminate sentences	10,876	349	11,225	11,784	356	12,140	8	2	8
Recalls	4,818	182	5,000	4,808	163	4,971	0	-10	-1
<b>Non-criminal prisoners</b>	<b>1,466</b>	<b>63</b>	<b>1,529</b>	<b>1,081</b>	<b>49</b>	<b>1,130</b>	<b>-26</b>	<b>*</b>	<b>-26</b>
<b>All 15 -17 year olds in prison, of which</b>	<b>2,116</b>	<b>49</b>	<b>2,165</b>	<b>1,680</b>	<b>44</b>	<b>1,724</b>	<b>-21</b>	<b>*</b>	<b>-20</b>
<b>Remand</b>	<b>500</b>	<b>10</b>	<b>510</b>	<b>465</b>	<b>9</b>	<b>474</b>	<b>-7</b>	<b>*</b>	<b>-7</b>
Untried	341	8	349	352	5	357	3	*	2
Convicted unsentenced	159	2	161	113	4	117	-29	*	-27
<b>Sentenced</b>	<b>1,614</b>	<b>39</b>	<b>1,653</b>	<b>1,214</b>	<b>35</b>	<b>1,249</b>	<b>-25</b>	<b>*</b>	<b>-24</b>
Fine defaulter	0	0	0	0	0	0	*	*	*
Less than 6 months	173	10	183	135	9	144	-22	*	-21
Greater than & equal to 6 months to less than 12 months	349	6	355	244	5	249	-30	*	-30
12 months to less than 4 years	805	15	820	600	14	614	-25	*	-25
4 years or more (excluding Indeterminate sentences)	144	6	150	152	1	153	6	*	2
Indeterminate sentences	62	1	63	54	4	58	-13	*	-8
Recalls	81	1	82	29	2	31	*	*	*
<b>Non-criminal prisoners</b>	<b>2</b>	<b>0</b>	<b>2</b>	<b>1</b>	<b>0</b>	<b>1</b>	<b>*</b>	<b>*</b>	<b>*</b>
<b>All young adults in prison, of which</b>	<b>8,960</b>	<b>439</b>	<b>9,399</b>	<b>9,408</b>	<b>415</b>	<b>9,823</b>	<b>5</b>	<b>-5</b>	<b>5</b>
<b>Remand</b>	<b>1,839</b>	<b>105</b>	<b>1,944</b>	<b>1,786</b>	<b>72</b>	<b>1,858</b>	<b>-3</b>	<b>-31</b>	<b>-4</b>
Untried	1,143	65	1,208	1,003	40	1,043	-12	*	-14
Convicted unsentenced	696	40	736	783	32	815	13	*	11
<b>Sentenced</b>	<b>7,017</b>	<b>330</b>	<b>7,347</b>	<b>7,556</b>	<b>337</b>	<b>7,893</b>	<b>8</b>	<b>2</b>	<b>7</b>
Fine defaulter	4	0	4	8	0	8	*	*	*
Less than 6 months	590	54	644	682	41	723	16	*	12
Greater than & equal to 6 months to less than 12 months	485	45	530	461	38	499	-5	*	-6
12 months to less than 4 years	3,278	130	3,408	3,512	145	3,657	7	12	7
4 years or more (excluding Indeterminate sentences)	1,497	58	1,555	1,794	70	1,864	20	21	20
Indeterminate sentences	618	14	632	606	18	624	-2	*	-1
Recalls	545	29	574	493	25	518	-10	*	-10
<b>Non-criminal prisoners</b>	<b>104</b>	<b>4</b>	<b>108</b>	<b>66</b>	<b>6</b>	<b>72</b>	<b>-37</b>	<b>*</b>	<b>-33</b>

Young adults are those aged 18 - 20 and those 21 year olds who were aged 20 or under at conviction who have not been reclassified as part of the adult population

\* indicates that one or both of the comparative numbers are less than 50 which could give rise to misleading percentage changes

**Table 2: Population in prison by offence - remand and immediate custodial sentence**

	Mar-09		Mar-10		Percentage change 2009 to 2010	
	Remand (includes recalls)	Immediate custodial sentence (includes recalls)	Remand (includes recalls)	Immediate custodial sentence (includes recalls)	Remand	Immediate custodial sentence (includes recalls)
<b>All prisoners</b>	<b>12,777</b>	<b>68,426</b>	<b>12,629</b>	<b>71,198</b>	<b>-1</b>	<b>4</b>
Violence against the person	3,267	19,625	3,227	20,383	-1	4
Sexual offences	1,039	8,065	1,087	9,302	5	15
Robbery	1,476	8,671	1,382	8,893	-6	3
Burglary	1,538	7,315	1,353	6,930	-12	-5
Theft and Handling	861	3,207	930	3,690	8	15
Fraud and Forgery	485	1,989	420	1,664	-13	-16
Drug offences	1,691	10,532	1,858	10,890	10	3
Motoring offences	77	1,088	59	913	-23	-16
Other offences	1,844	6,386	1,883	7,391	2	16
Offence not recorded	499	1,548	430	1,142	-14	-26
<b>All male prisoners</b>	<b>11,994</b>	<b>64,989</b>	<b>11,881</b>	<b>67,733</b>	<b>-1</b>	<b>4</b>
Violence against the person	3,100	18,768	3,055	19,475	-1	4
Sexual offences	1,016	8,006	1,061	9,222	4	15
Robbery	1,403	8,338	1,319	8,601	-6	3
Burglary	1,496	7,113	1,319	6,785	-12	-5
Theft and Handling	764	2,833	852	3,270	12	15
Fraud and Forgery	417	1,739	357	1,451	-14	-17
Drug offences	1,562	9,644	1,727	10,046	11	4
Motoring offences	77	1,073	57	900	-26	-16
Other offences	1,700	6,007	1,745	6,913	3	15
Offence not recorded	459	1,468	389	1,070	-15	-27
<b>All female prisoners</b>	<b>783</b>	<b>3,437</b>	<b>748</b>	<b>3,465</b>	<b>-4</b>	<b>1</b>
Violence against the person	167	857	172	908	3	6
Sexual offences	23	59	26	80	*	36
Robbery	73	333	63	292	-14	-12
Burglary	42	202	34	145	*	-28
Theft and Handling	97	374	78	420	-20	12
Fraud and Forgery	68	250	63	213	-7	-15
Drug offences	129	888	131	844	2	-5
Motoring offences	0	15	2	13	*	*
Other offences	144	379	138	478	-4	26
Offence not recorded	40	80	41	72	*	-10



**Table 2: Population in prison by offence - remand and immediate custodial sentence**

	Mar-09		Mar-10		Percentage change 2009 to 2010	
	Remand	Immediate custodial sentence (includes recalls)	Remand	Immediate custodial sentence (includes recalls)	Remand	Immediate custodial sentence (includes recalls)
<b>All adult prisoners</b>	<b>10,323</b>	<b>59,430</b>	<b>10,297</b>	<b>62,064</b>	<b>0</b>	<b>4</b>
Violence against the person	2,588	17,064	2,561	17,747	-1	4
Sexual offences	930	7,672	970	8,740	4	14
Robbery	964	6,567	888	6,805	-8	4
Burglary	1,194	6,199	1,039	5,769	-13	-7
Theft and Handling	719	2,777	773	3,251	8	17
Fraud and Forgery	455	1,923	402	1,619	-12	-16
Drug offences	1,483	9,754	1,636	10,100	10	4
Motoring offences	64	957	53	825	-17	-14
Other offences	1,507	5,326	1,617	6,263	7	18
Offence not recorded	419	1,191	358	945	-15	-21
<b>All adult male prisoners</b>	<b>9,655</b>	<b>56,362</b>	<b>9,630</b>	<b>58,971</b>	<b>0</b>	<b>5</b>
Violence against the person	2,448	16,338	2422	16983	-1	4
Sexual offences	911	7,615	946	8666	4	14
Robbery	911	6,300	834	6573	-8	4
Burglary	1,159	6,016	1006	5636	-13	-6
Theft and handling	634	2,430	705	2855	11	17
Fraud and Forgery	389	1,680	340	1413	-13	-16
Drug offences	1,369	8,918	1515	9314	11	4
Motoring offences	64	946	51	813	-20	-14
Other offences	1,388	4,998	1488	5836	7	17
Offence not recorded	382	1,121	323	882	-15	-21
<b>All adult female prisoners</b>	<b>668</b>	<b>3,068</b>	<b>667</b>	<b>3,093</b>	<b>0</b>	<b>1</b>
Violence against the person	140	726	139	764	-1	5
Sexual offences	19	57	24	74	*	30
Robbery	53	267	54	232	2	-13
Burglary	35	183	33	133	*	-27
Theft and handling	85	347	68	396	-20	14
Fraud and Forgery	66	243	62	206	-6	-15
Drug offences	114	836	121	786	6	-6
Motoring offences	0	11	2	12	*	*
Other offences	119	328	129	427	8	30
Offence not recorded	37	70	35	63	*	-10

**Table 2: Population in prison by offence - remand and immediate custodial sentence**

	Mar-09		Mar-10		Percentage change 2009 to 2010	
	Remand	Immediate custodial sentence (includes recalls)	Remand	Immediate custodial sentence (includes recalls)	Remand	Immediate custodial sentence (includes recalls)
<b>All aged 15-17</b>	<b>510</b>	<b>1,653</b>	<b>474</b>	<b>1,249</b>	<b>-7</b>	<b>-24</b>
Violence against the person	138	433	149	324	8	-25
Sexual offences	27	71	21	71	*	0
Robbery	140	441	120	333	-14	-24
Burglary	79	259	56	194	-29	-25
Theft and Handling	19	122	22	78	*	-36
Fraud and Forgery	3	3	0	4	*	*
Drug offences	33	80	41	65	*	-19
Motoring offences	3	17	0	7	*	*
Other offences	49	203	48	158	*	-22
Offence not recorded	19	24	17	15	*	*
<b>All males aged 15-17</b>	<b>500</b>	<b>1,614</b>	<b>465</b>	<b>1,214</b>	<b>-7</b>	<b>-25</b>
Violence against the person	136	420	146	310	7	-26
Sexual offences	27	70	21	70	*	0
Robbery	137	432	120	327	-12	-24
Burglary	78	256	55	193	-29	-25
Theft and handling	17	119	22	74	*	-38
Fraud and Forgery	3	3	0	4	*	*
Drug offences	33	79	40	64	*	-19
Motoring offences	3	17	0	7	*	*
Other offences	47	196	46	154	*	-21
Offence not recorded	19	22	15	11	*	*
<b>All females aged 15-17</b>	<b>10</b>	<b>39</b>	<b>9</b>	<b>35</b>	<b>*</b>	<b>*</b>
Violence against the person	2	13	3	14	*	*
Sexual offences	0	1	0	1	*	*
Robbery	3	9	0	6	*	*
Burglary	1	3	1	1	*	*
Theft and handling	2	3	0	4	*	*
Fraud and Forgery	0	0	0	0	*	*
Drug offences	0	1	1	1	*	*
Motoring offences	0	0	0	0	*	*
Other offences	2	7	2	4	*	*
Offence not recorded	0	2	2	4	*	*

**Table 2: Population in prison by offence - remand and immediate custodial sentence**

	Mar-09		Mar-10		Percentage change 2009 to 2010	
	Remand	Immediate custodial sentence (includes recalls)	Remand	Immediate custodial sentence (includes recalls)	Remand	Immediate custodial sentence (includes recalls)
<b>All young adults</b>	<b>1,944</b>	<b>7,343</b>	<b>1,858</b>	<b>7,885</b>	<b>-4</b>	<b>7</b>
Violence against the person	541	2,128	517	2,312	-4	9
Sexual offences	82	322	96	491	17	52
Robbery	372	1,663	374	1,755	1	6
Burglary	265	857	258	967	-3	13
Theft and Handling	123	308	135	361	10	17
Fraud and Forgery	27	63	18	41	*	*
Drug offences	175	698	181	725	3	4
Motoring offences	10	114	6	81	*	-29
Other offences	288	857	218	970	-24	13
Offence not recorded	61	333	55	182	-10	-45
<b>All male young adults</b>	<b>1,839</b>	<b>7,013</b>	<b>1,786</b>	<b>7,548</b>	<b>-3</b>	<b>8</b>
Violence against the person	516	2,010	487	2182	-6	9
Sexual offences	78	321	94	486	21	51
Robbery	355	1,606	365	1701	3	6
Burglary	259	841	258	956	0	14
Theft and handling	113	284	125	341	11	20
Fraud and Forgery	25	56	17	34	*	*
Drug offences	160	647	172	668	8	3
Motoring offences	10	110	6	80	*	-27
Other offences	265	813	211	923	-20	14
Offence not recorded	58	325	51	177	-12	-46
<b>All female young adults</b>	<b>105</b>	<b>330</b>	<b>72</b>	<b>337</b>	<b>-31</b>	<b>2</b>
Violence against the person	25	118	30	130	*	10
Sexual offences	4	1	2	5	*	*
Robbery	17	57	9	54	*	-5
Burglary	6	16	0	11	*	*
Theft and handling	10	24	10	20	*	*
Fraud and Forgery	2	7	1	7	*	*
Drug offences	15	51	9	57	*	12
Motoring offences	0	4	0	1	*	*
Other offences	23	44	7	47	*	*
Offence not recorded	3	8	4	5	*	*

Figures for immediate custodial population includes recallers, but excludes fine defaulters

\* indicates that one or both of the comparative numbers are less than 50 which could give rise to misleading percentage changes

**Table 3: Young population in prison: by type of custody and sex**

31 March 2010

	15	16	17	Total - under 18	18	19	20	21	Total Young Adults
<b>All young population in prisons, of which</b>									
<b><i>Prisoners on remand</i></b>	<b>41</b>	<b>145</b>	<b>288</b>	<b>474</b>	<b>556</b>	<b>621</b>	<b>589</b>	<b>92</b>	<b>1,858</b>
Untried	28	121	208	<b>357</b>	313	348	332	50	<b>1,043</b>
Convicted unsentenced	13	24	80	<b>117</b>	243	273	257	42	<b>815</b>
<b><i>Prisoners sentenced</i></b>	<b>104</b>	<b>352</b>	<b>793</b>	<b>1,249</b>	<b>1,431</b>	<b>2,531</b>	<b>2,789</b>	<b>1,142</b>	<b>7,893</b>
Fine defaulter	0	0	0	<b>0</b>	2	2	4	0	<b>8</b>
Sentences (excluding recalls)	102	345	771	<b>1,218</b>	1,382	2,386	2,555	1,044	<b>7,367</b>
Recalls	2	7	22	<b>31</b>	47	143	230	98	<b>518</b>
<b><i>Non-criminal prisoners</i></b>	<b>1</b>	<b>0</b>	<b>0</b>	<b>1</b>	<b>11</b>	<b>18</b>	<b>29</b>	<b>14</b>	<b>72</b>
<b>All young male population in prisons, of which</b>									
<b><i>Prisoners on remand</i></b>	<b>41</b>	<b>145</b>	<b>279</b>	<b>465</b>	<b>534</b>	<b>593</b>	<b>572</b>	<b>87</b>	<b>1,786</b>
Untried	28	121	203	<b>352</b>	304	331	321	47	<b>1,003</b>
Convicted unsentenced	13	24	76	<b>113</b>	230	262	251	40	<b>783</b>
<b><i>Prisoners sentenced</i></b>	<b>104</b>	<b>352</b>	<b>758</b>	<b>1,214</b>	<b>1,362</b>	<b>2,423</b>	<b>2,675</b>	<b>1,096</b>	<b>7,556</b>
Fine defaulter	0	0	0	<b>0</b>	2	2	4	0	<b>8</b>
Sentences (excluding recalls)	102	345	738	<b>1,185</b>	1,315	2,288	2,450	1,002	<b>7,055</b>
Recalls	2	7	20	<b>29</b>	45	133	221	94	<b>493</b>
<b><i>Non-criminal prisoners</i></b>	<b>1</b>	<b>0</b>	<b>0</b>	<b>1</b>	<b>9</b>	<b>17</b>	<b>29</b>	<b>11</b>	<b>66</b>
<b>All young female population in prisons, of which</b>									
<b><i>Prisoners on remand</i></b>	<b>0</b>	<b>0</b>	<b>9</b>	<b>9</b>	<b>22</b>	<b>28</b>	<b>17</b>	<b>5</b>	<b>72</b>
Untried	0	0	5	<b>5</b>	9	17	11	3	<b>40</b>
Convicted unsentenced	0	0	4	<b>4</b>	13	11	6	2	<b>32</b>
<b><i>Prisoners sentenced</i></b>	<b>0</b>	<b>0</b>	<b>35</b>	<b>35</b>	<b>69</b>	<b>108</b>	<b>114</b>	<b>46</b>	<b>337</b>
Fine defaulter	0	0	0	<b>0</b>	0	0	0	0	<b>0</b>
Sentences (excluding recalls)	0	0	33	<b>33</b>	67	98	105	42	<b>312</b>
Recalls	0	0	2	<b>2</b>	2	10	9	4	<b>25</b>
<b><i>Non-criminal prisoners</i></b>	<b>0</b>	<b>0</b>	<b>0</b>	<b>0</b>	<b>2</b>	<b>1</b>	<b>0</b>	<b>3</b>	<b>6</b>

Young adults are those aged 18 - 20 and those 21 year olds who were aged 20 or under at conviction who have not been reclassified as part of the adult population

Prisoners sentenced include fine defaulters and recallees

**Table 4: CNA and population by sex and establishment**

31 March 2010

Establishment	In use CNA <sup>1</sup>	Total Population	Of which:		
			Foreign nationals	UK nationals	Nationality not recorded
<b>Males</b>					
Altcourse	794	1,303	98	1,183	22
Acklington	946	931	21	885	25
Ashfield	400	235	22	211	2
Ashwell	184	213	7	206	0
Aylesbury	441	438	74	364	0
Belmarsh	800	862	166	685	11
Buckley Hall	350	383	10	372	1
Blundeston	481	520	80	437	3
Bedford	315	487	100	283	104
Blantyre House	122	121	1	120	0
Bristol	424	611	65	533	13
Birmingham	1,090	1,461	244	1,110	107
Bullingdon	879	1,121	139	963	19
Bure	251	249	35	212	2
Brinsford	545	451	47	381	23
Bullwood Hall	220	223	218	4	1
Brixton	606	774	260	499	15
Chelmsford	554	688	97	549	42
Cardiff	548	823	68	749	6
Cookham Wood	120	92	15	66	11
Coldingley	494	509	20	489	0
Castington	400	283	2	199	82
Channings Wood	698	724	12	703	9
Canterbury	195	303	285	17	1
Dartmoor	572	590	68	522	0
Dovegate	1,060	1,137	102	1,011	24
Durham	606	974	95	739	140
Doncaster	771	1,120	100	990	30
Dorchester	137	232	19	206	7
Deerbolt	513	504	17	485	2
Dover	316	311	273	0	38
Erlestoke	470	468	16	452	0
Sheppey Cluster (Standford Hill)	464	448	26	420	2
Everthorpe	603	670	7	652	11
Exeter	322	548	28	479	41
Sheppey Cluster (Elmley)	735	967	101	745	121
Forest Bank	1,064	1,422	113	1,286	23
Ford	557	549	67	478	4
Frankland	859	816	59	754	3
Feltham	762	657	179	464	14
Full Sutton	596	590	52	537	1
Featherstone	642	649	72	573	4
Garth	812	843	57	782	4
Gloucester	225	309	29	262	18
Guys Marsh	497	555	71	484	0
Grendon/Spring Hill	573	541	21	520	0
Glen Parva	652	809	79	691	39
Gartree	689	677	76	598	3
Hollesley Bay	345	340	11	328	1
Huntercombe	360	162	21	125	16
Moorland Open	260	245	1	244	0
Hewell *	1,173	1,418	182	1,138	98
Holme House	947	1,084	39	1,000	45
Hindley	440	349	9	338	2
Hull	723	1,025	87	936	2
HighDown	999	1,104	234	836	34
Highpoint	920	944	171	761	12
Haslar	138	118	115	0	3
Haverigg	622	563	25	537	1
Isle of Wight**	1,562	1,667	244	1,400	23
Kirkham	590	582	9	557	16
Kennet	175	338	4	319	15
Kirklevington	283	266	0	266	0
Lancaster	159	238	4	199	35
Leicester	210	347	54	276	17
Leeds	829	1,158	96	1,015	47
Lancaster Farms	480	524	17	477	30
Lowdham Grange	760	741	106	630	5
Lindholme	1,054	1,091	285	785	21
Lincoln	436	665	69	586	10
Long Lartin	622	623	90	532	1
Latchmere House	207	203	4	199	0

**Table 4: CNA and population by sex and establishment**

31 March 2010

Establishment	In use CNA <sup>1</sup>	Total Population	Of which:		
			Foreign nationals	UK nationals	Nationality not recorded
Liverpool	1,176	1,344	123	1,119	102
Littlehey	823	876	111	758	7
Lewes	495	479	63	370	46
Leyhill	532	499	26	473	0
Moorland	727	764	34	724	6
Manchester	949	1,262	178	995	89
Maidstone	565	595	242	351	2
Mount	747	759	186	571	2
Edmunds Hill	379	380	75	296	9
Nottingham	429	616	73	469	74
Northallerton	147	234	2	232	0
North Sea Camp	318	303	5	294	4
Norwich	625	757	104	627	26
Onley	710	617	34	563	20
Peterborough	480	617	122	480	15
Portland	463	473	64	407	2
Preston	453	780	29	404	347
Parc	838	1,190	53	1,123	14
Kingston (Portsmouth)	199	195	15	180	0
Pentonville	909	1,216	357	817	42
Rochester	724	716	113	597	6
Reading	190	263	24	229	10
Rye Hill	600	643	122	520	1
Ranby	969	1,087	134	945	8
Risley	1,050	1,084	142	925	17
Stafford	741	737	80	650	7
Stoke Heath	576	568	24	510	34
Stocken	779	815	33	771	11
Swaleside	986	990	166	819	5
Shepton Mallet	165	189	8	181	0
Swinfen Hall	604	628	55	570	3
Sudbury	581	573	12	558	3
Swansea	230	396	17	378	1
Shrewsbury	184	306	16	289	1
Thorn Cross	322	283	2	269	12
Usk/Prescoed	320	427	15	408	4
Verne	572	583	315	267	1
Wellingborough	638	640	100	530	10
Winchester	499	685	67	598	20
Wakefield	748	736	61	673	2
Wealstun	505	509	25	478	6
Woodhill	656	804	124	642	38
Warren Hill	222	149	12	116	21
Wayland	957	997	45	950	2
Wymott	1,113	1,140	79	1,055	6
Werrington	160	127	4	93	30
Wolds	320	379	8	371	0
Whitmoor	448	449	92	357	0
Wormwood Scrubs	1,153	1,298	447	797	54
Whatton	734	813	46	761	6
Wandsworth	1,107	1,631	572	967	92
Wetherby	408	307	10	294	3
<b>TOTAL</b>	<b>71,873</b>	<b>80,894</b>	<b>10,556</b>	<b>67,655</b>	<b>2,683</b>

**Table 4: CNA and population by sex and establishment**

31 March 2010

Establishment	In use CNA <sup>1</sup>	Total Population	Of which:		
			Foreign nationals	UK nationals	Nationality not recorded
Females					
Askham Grange	126	112	0	110	2
Bronzefield	527	484	142	330	12
Drake Hall	315	285	39	243	3
Downview	358	338	80	253	5
East Sutton Park	98	81	6	75	0
Eastwood Park	326	310	26	269	15
Foston Hall	283	236	20	211	5
Holloway	496	457	135	306	16
Low Newton	267	255	12	240	3
Morton Hall	392	304	181	123	0
New Hall	386	358	28	302	28
Peterborough	360	357	69	282	6
Send	282	277	28	249	0
Styal	447	436	45	364	27
<b>TOTAL</b>	<b>4,663</b>	<b>4,290</b>	<b>811</b>	<b>3,357</b>	<b>122</b>
<b>Male and female establishment TOTAL</b>	<b>76,536</b>	<b>85,184</b>	<b>11,367</b>	<b>71,012</b>	<b>2,805</b>
<b>Police cells</b>	<b>***</b>				
<b>Establishment and Police cell TOTAL</b>	<b>76,536</b>	<b>85,184</b>	<b>11,367</b>	<b>71,012</b>	<b>2,805</b>

<sup>1</sup> In Use CNA - Certified Normal Accommodation that is available for immediate use, excludes damaged cells, cells affected by building works and cells taken out of use due to staff shortages

\* HMP Hewell was created by an amalgamation of the three former prisons, Blakenhurst, Brockhill and Hewell Grange on 25 June 2006

\*\* HMP Isle of Wight was created by an amalgamation of the three former prisons, Albany, Camp Hill and Parkurst on 1st April 2001

\*\*\* On 31st March 2010 up to 400 police cells available under operation safeguard which are not included in the CNA figure

#### Data Sources and Quality

These figures have been drawn from administrative IT systems which, as with any large scale recording system, are subject to possible errors with data entry and processing. See Data Sources and Quality section of report for more information.

**Table 5: Population in prison by nationality and sex**

31st March 2010

Nationality	Male	Female	Total	Nationality	Male	Female	Total
<b>All nationalities</b>	<b>80,894</b>	<b>4,290</b>	<b>85,184</b>				
<b>British nationals</b>	<b>67,655</b>	<b>3,357</b>	<b>71,012</b>				
<b>Foreign nationals</b>	<b>10,556</b>	<b>811</b>	<b>11,367</b>				
<b>Nationality not recorded</b>	<b>2,683</b>	<b>122</b>	<b>2,805</b>				
<b>Total Africa</b>	<b>2,576</b>	<b>222</b>	<b>2,798</b>	<b>Total Europe</b>	<b>3,746</b>	<b>252</b>	<b>3,998</b>
Algeria	172	0	172	Albania	163	4	167
Angola	74	5	79	Armenia	9	0	9
Benin	1	0	1	Austria	12	2	14
Botswana	3	1	4	Azerbaijan	3	0	3
Burundi	9	0	9	Belgium	30	3	33
Cameroon	32	2	34	Bosnia and Herzegovina	10	4	14
Central African Republic	22	1	23	Bulgaria	28	24	52
Congo	124	8	132	Croatia	9	0	9
Congo, Democratic Republic of the	4	0	4	Cyprus	30	0	30
Egypt	13	0	13	Czech Republic	80	12	92
Equatorial Guinea	1	0	1	Denmark	16	1	17
Ethiopia	63	5	68	Estonia	26	0	26
Gabon	1	0	1	Finland	4	0	4
Gambia	65	3	68	France	142	12	154
Ghana	138	14	152	Georgia	8	0	8
Guinea	12	0	12	Germany	84	11	95
Guinea-Bissau	1	0	1	Gibraltar	4	0	4
Ivory Coast	36	0	36	Greece	13	0	13
Kenya	56	7	63	Hungary	26	6	32
Liberia	20	4	24	Iceland	0	3	3
Libyan Arab Jamahiriya	20	0	20	Irish Republic	657	25	682
Malawi	14	1	15	Italy	80	2	82
Mali	1	0	1	Kazakhstan	2	0	2
Mauritania	2	1	3	Kyrgyzstan	1	1	2
Mauritius	10	0	10	Latvia	140	9	149
Morocco	48	0	48	Liechtenstein	1	0	1
Mozambique	3	0	3	Lithuania	338	10	348
Namibia	3	0	3	Macedonia	4	0	4
Niger	11	2	13	Malta	3	0	3
Nigeria	645	89	734	Moldova	15	1	16
Rwanda	16	0	16	Netherlands	99	15	114
Senegal	9	0	9	Norway	7	0	7
Sierra Leone	63	5	68	Poland	657	13	670
Somalia	442	10	452	Portugal	212	13	225
South Africa	109	23	132	Romania	358	47	405
Sudan	43	2	45	Russian Federation	112	12	124
Tanzania	23	2	25	San Marino	1	0	1
Togo	5	0	5	Serbia and Montenegro	38	0	38
Tunisia	18	0	18	Slovakia	54	6	60
Uganda	63	10	73	Slovenia	3	0	3
Zambia	14	3	17	Spain	65	10	75
Zimbabwe	167	24	191	Sweden	17	4	21
				Switzerland	6	1	7
				Turkey	170	1	171
				Turkmenistan	1	0	1
				Uzbekistan	8	0	8
<b>Total Asia</b>	<b>2,204</b>	<b>147</b>	<b>2,351</b>	<b>Total Middle East</b>	<b>562</b>	<b>12</b>	<b>574</b>
Afghanistan	123	1	124	Iran	205	8	213
Bangladesh	188	7	195	Iraq	240	1	241
Cambodia	1	0	1	Israel	35	2	37
China	385	42	427	Jordan	7	0	7
India	328	11	339	Kuwait	12	1	13
Indonesia	1	0	1	Lebanon	16	0	16
Japan	3	0	3	Oman	2	0	2
Korea, DPR (North Korea)	1	2	3	Qatar	1	0	1
Korea, Republic of	5	0	5	Saudi Arabia	16	0	16
Malaysia	37	5	42	Syrian Arab Republic	12	0	12
Mongolia	3	1	4	United Arab Emirates	4	0	4
Myanmar	3	0	3	Yemen, Republic of	12	0	12
Nepal	10	1	11				
Pakistan	413	8	421	<b>Total Oceania</b>	<b>39</b>	<b>3</b>	<b>42</b>
Philippines	18	8	26	Australia	24	3	27
Singapore	2	2	4	Fiji	7	0	7
Sri Lanka	147	0	147	Kiribati	1	0	1
Taiwan (Nationalist Chinese)	2	1	3	New Zealand	5	0	5
Thailand	2	5	7	Papua New Guinea	1	0	1
Vietnam	532	53	585	Samoa	1	0	1
<b>Total Central and South America</b>	<b>252</b>	<b>45</b>	<b>297</b>	<b>Total West Indies</b>	<b>1,069</b>	<b>108</b>	<b>1,177</b>
Argentina	5	3	8	Anguilla	1	0	1
Belize	0	1	1	Aruba	1	0	1
Bolivia	7	1	8	Bahamas	2	0	2
Brazil	66	14	80	Barbados	31	8	39
Chile	8	0	8	Bermuda	2	1	3
Colombia	71	5	76	Cuba	3	0	3
Costa Rica	2	0	2	Dominica	14	1	15
Ecuador	9	0	9	Dominican Republic	1	0	1
French Guiana	2	2	4	Grenada	18	1	19
Guatemala	4	1	5	Jamaica	895	65	960
Guyana	29	4	33	Montserrat	13	0	13
Mexico	20	11	31	Netherlands Antilles	6	3	9
Nicaragua	3	0	3	St Kitts and Nevis	5	0	5
Panama	1	0	1	St Lucia	20	11	31
Paraguay	2	0	2	St Vincent and the Grenadines	15	2	17
Peru	3	1	4	Trinidad and Tobago	41	16	57
Suriname	3	0	3	Virgin Islands	1	0	1
Uruguay	1	0	1				
Venezuela	16	2	18	<b>Total Other</b>	<b>2</b>	<b>0</b>	<b>2</b>
<b>Total North America</b>	<b>106</b>	<b>22</b>	<b>128</b>				
Canada	26	6	32				
United States	80	16	96				

**Data Sources and Quality**

These figures have been drawn from administrative IT systems. Care is taken when processing and analysing the returns, but the detail collected is subject to the inaccuracies inherent in any large scale recording system, and so although shown to the last individual, the figure may not be accurate to that level.