

EC Type Examination Certificate Number: **UK/ 0120/ SGS0057**

## **Kohler Elektrik Sayaclari San ve Tic. A.S**

Bankalar Cad. Tenha Sok. No:8 Uçartlar Han Karaköy  
Beyoğlu  
İSTANBUL  
TURKEY

Instrument Identification:

**AEL.MF.06**

**Single Phase, Multi-rate, Active Import / Export, Outdoor, Electricity Meter**

Instrument Traceable Number

**UK/ 0120/ SGS0057**

has been assessed and certified as meeting the requirements of

## **EC Directive 2004/22/EC** **on Measuring Instruments Annex B**

It is certified that the manufacturer's technical design and specimen for the above instrument has been examined and, based on the evidence submitted, it is considered that the instrument conforms to the requirements of MI-003 of EC Directive 2004/22/EC.

This certificate is issued in conjunction with a certificate covering the product verification as required in Annex D or Annex F.

This certificate is valid for 10 years from 15<sup>th</sup> February 2010 until 14<sup>th</sup> February 2020  
Issue 2

Certification is based on report number(s)  
EMA132806 dated 15<sup>th</sup> February 2010

Notified Body Number 0120

Authorised Signature  
Mr J Weaver



**CE**  
**0120**

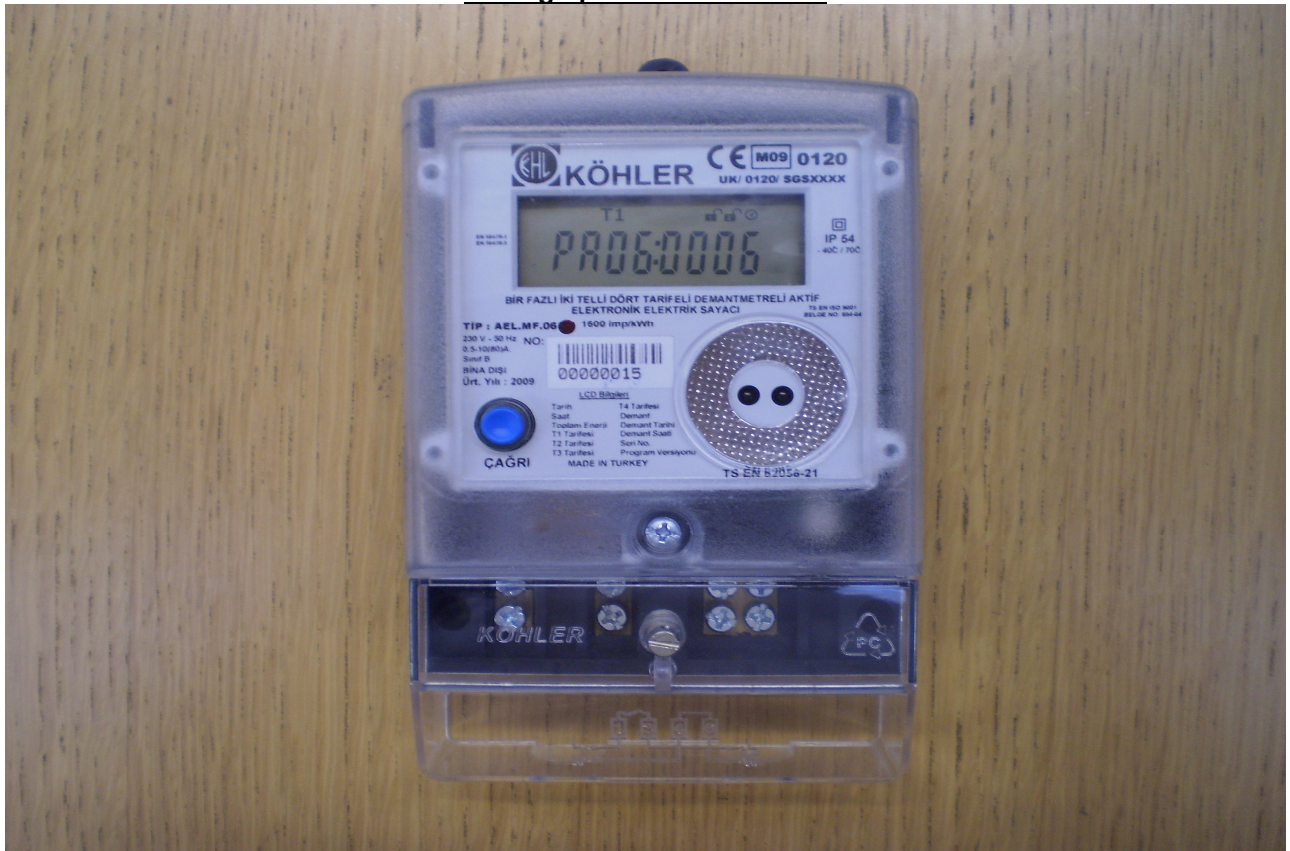
Notified Body  
SGS United Kingdom Ltd, 202B Worle Parkway, Weston-super-Mare, BS22 6WA UK  
t +44 (0)1934 522917 f +44 (0)1934 522137 [www.sgs.com](http://www.sgs.com)  
Contact Address  
SGS United Kingdom Ltd, Unit 10, South Industrial Estate, Bowburn, Durham, DH6 5AD UK  
t +44 (0)191 377 2000 f +44 (0)191 377 2020 [www.sgs.com](http://www.sgs.com)

EC Type Examination Cert.

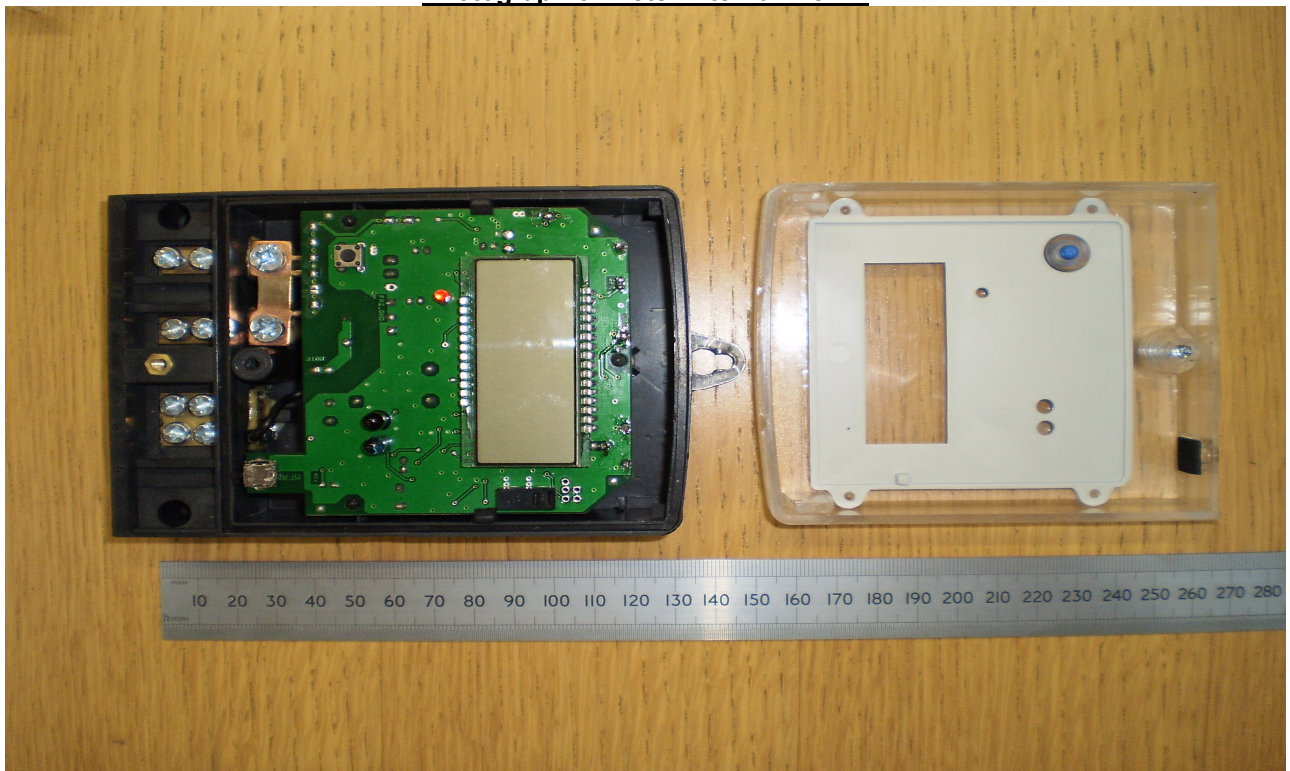
## Approval Annex for EC Type Examination Cert. No. UK/ 0120/ SGS0057

<b>Manufacturer</b>	:	Kohler Elektrik Sayaclari San ve Tic. A.S	
<b>Type of Meter(s)</b>	:	AEL.MF.06	
<b>Description of Meter</b>	:	Single Phase, Multi-rate, Active Import/ Export, Outdoor, Electricity Meter	
<b>Accuracy Class (es)</b>	:	A or B (kWh)	<b>Software Version No</b> : PROG:0006 <b>Location</b> : LCD
<b>Firmware Version No</b>	:	PROG:0006	<b>Bill Of Materials No:</b> AEL MF 06 Model Electronic Electric Meter Component List
<b>Location</b>	:	LCD	
<b>Meter Location</b>	:	Outdoor	<b>Sealing Type:</b> Main Meter Cover – Lead Inserts Terminal Cover - Plastic Crimp
<b>Integrity of Meter</b>	:	Inaccessible without breaking seals	<b>Temperature Range</b> : -40°C to 70°C
<b>Type of Circuit</b>	:	1p2w	<b>Frequency</b> : 50Hz
<b>Current Range (A)</b>	:	0,5-10(80)A	<b>Voltage Range (V)</b> : 230V

**Photograph of Front of meter**



**Photograph of meter Internal View 1**



**Photograph of meter Internal View 2**



Modifications to the meter(s) described according to approval No. **UK/ 0120/ SGS0057** must be notified to the issuing body to confirm the meter(s) continuing compliance to the relevant pattern approval standard(s).