



Ministry of
JUSTICE

**Population in custody
monthly tables
April 2010
England and Wales**

Ministry of Justice
Statistics bulletin

Published 28 May 2010

Population in custody April 2010 - Key points

Resumption of Publication/Use of new data source/new subcategories of data

- Publication of the monthly population in custody bulletin was suspended from August 2009 to March 2010 due to technical problems relating to the supply of data for statistical purposes. Publication of the bulletin was resumed in April 2010 as announced on the MoJ website www.justice.gov.uk/publications/populationincustody.htm
- Figures in the resumed bulletin are based on a new data source, consistent with the published weekly prison figures. In order to provide a consistent comparison with the previous year, data for 2009 has also been taken from the new data source, which means that these figures will not match the monthly 2009 data published previously. The total prison population given for April 2009 is 40 higher than the figure previously published.

Population in custody (prisons, secure training centres and secure children's homes)

- The population in custody on 30 April 2010 was 85,500, a rise of 2,200 from a year earlier. The population in prisons was 85,100 (a rise of 2,300 from a year earlier), in Secure Training Centres (STCs) it was 250 and in Secure Children's Homes (SCHs) it was 160.

Population in prison

- The male prison population increased by 3 per cent (up 2,200) to 80,800 and the female prison population increased slightly by 1 per cent (up 30) to 4,300 in April 2010 compared to April 2009.
- It was expected that the withdrawal of the end of custody early release scheme would add between 1,000 and 1,200 to the daily prison population by the end of April 2010.
- The remand population in prison fell 1 per cent from 13,000 in April 2009 to 12,800 in April 2010 (down 140). Within this total, the untried population fell 6 per cent (down 500) to 8,000 and the convicted unsentenced population rose 8 per cent (up 360), to 4,800.
- There were 71,100 sentenced⁽¹⁾ prisoners at 30 April 2010, an increase of 4 per cent from a year earlier (up 2,800). There were increases in those serving sentences of all sentence lengths except 6 months to less than 12 months. The number of prisoners serving a sentence of less than 6 months rose 12 per cent between April 2009 and April 2010 (up 490) and those serving sentences of 4 years or more increased by 6 per cent (up 1,300). However, for those serving a sentence of 6 months to less than 12 months there was a fall (down 120, 4 per cent). The number of prisoners serving indeterminate sentences (Life sentences and indeterminate sentences for public protection - IPPs) increased by 7 per cent (up 900).
- There were 5,400 recall prisoners at 30 April 2010, down 360 from a year earlier.

- In terms of offence groups, amongst the remand population the largest proportionate increases since April 2009 were for theft and handling (up 70, 8 per cent), sexual offences (up 80, 8 per cent) and other offences (up 130, 7 per cent). The largest proportionate falls since April 2009 were seen in those serving sentences for motoring offences (down 20, 24 per cent) and fraud and forgery (down 70, 14 per cent).
- Amongst the sentenced⁽¹⁾ prison population the largest proportionate increases were for other offences (up 1,200, 19 per cent), theft and handling (up 570, 18 per cent) and sexual offences (up 1,200, 15 per cent) from April 2009. The largest proportionate decreases since April 2009 were for those serving sentences for fraud and forgery (down 370, 19 per cent) and motoring offences (down 160, 15 per cent).
- The adult population in prison was 73,400 at 30 April 2010, an increase of 3 per cent (up 2,000) from a year earlier. Over the same time period the number of 15 to 17 year olds fell 21 per cent (down 450) to 1,700 and the young adult prison population (see definitions) increased 7 per cent (up 660) to 10,000 at 30 April 2010.
- The prison population was 110 per cent of the 'In Use CNA' (77,200) at 30 April 2010.

(1) Includes recalls and excludes fine defaulters (see Table 2)

Figure A: Remand population by offence group

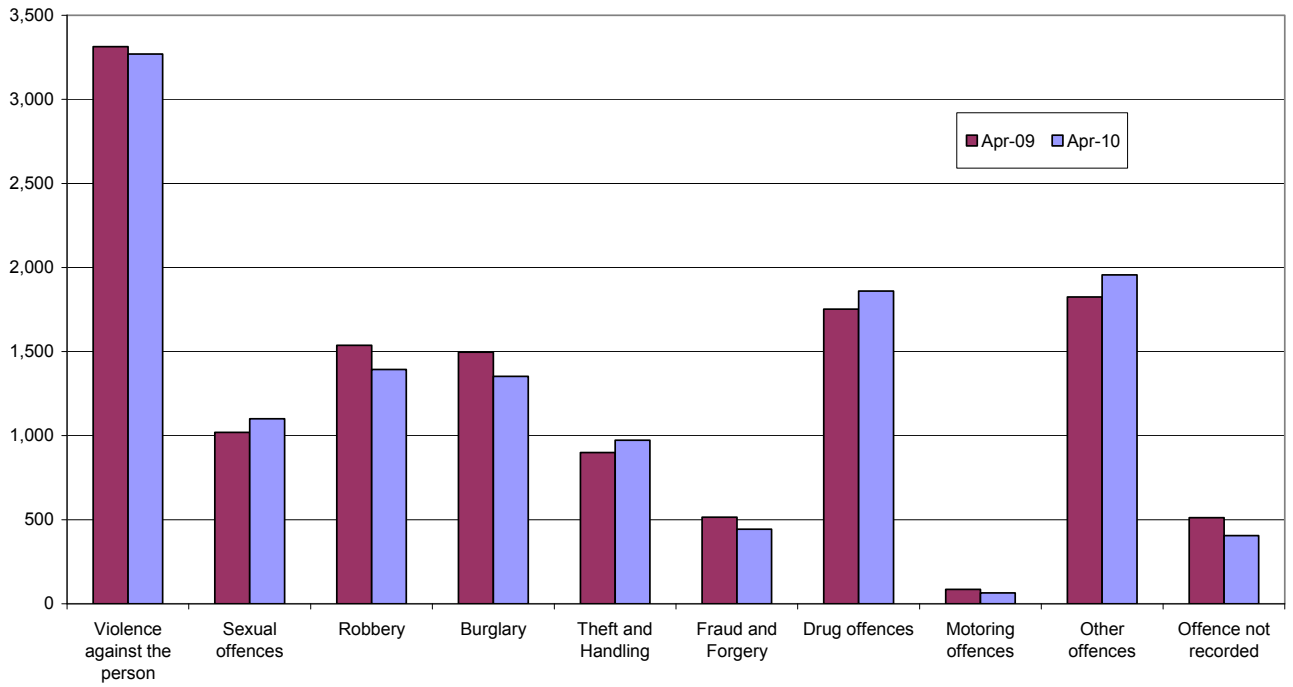
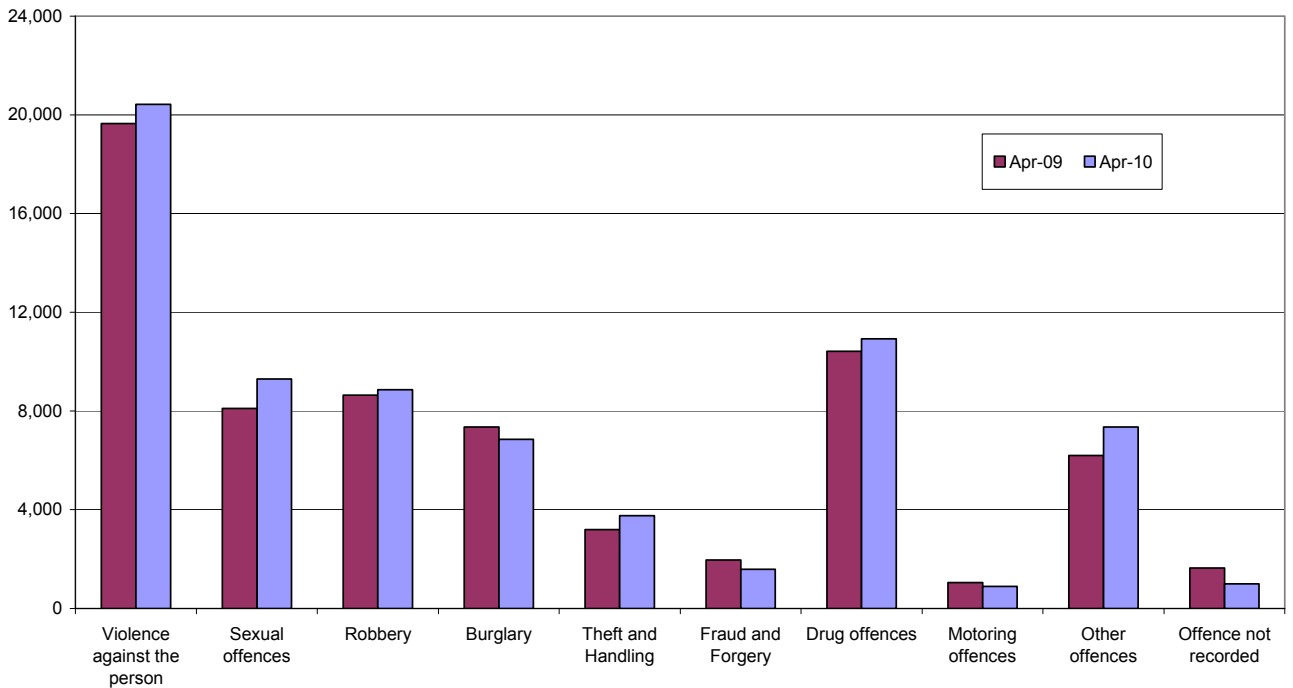


Figure B: Immediate custodial sentenced population by offence group



NOTES

Data sources and quality

The data presented in this brief are drawn from the prison administrative IT systems. Although care is taken when processing and analysing the returns, the detail collected is subject to the inaccuracies inherent in any large-scale recording system. While the figures shown have been checked as far as practicable, they should be regarded as approximate and not necessarily accurate to the last whole number shown in the tables. They are fit to be used for purposes of looking at trends and for comparing the relative magnitude of components.

The prison population information is now drawn from a single prison source. Although different from the source used up to June 2009, it contains the same details for individual inmates such as date of birth, sex, religion, ethnic origin, custody type, offence, reception and discharge dates and, for sentenced prisoners, sentence length. These data are collected on a central database and are used to produce all the analyses in this publication. The overall reliability of the sentence length data has increased, but in a small number of cases sentence length data is missing and has been imputed. Sentence lengths have been imputed for around 1,300 cases in the April 2010 dataset.

As a different data source is now being used for this publication comparisons with data a year ago will not match with data previously published for April 2009.

There are also two changes to the presentation of the data:

- The numbers in each sentence length band now exclude recalls which are shown as a separate subgroup within the total sentenced population (previously recalls were included in the relevant sentence length bands).
- The sentenced population groups “less than or equal to 6 months” and “greater than 6 months to less than 12 months” have been slightly revised to “less than 6 months” and “6 months to less than 12 months” respectively as a result of using the new data source.

Unless otherwise stated, numbers in the text have been rounded for ease of reading using the following rules:

Numbers of 100,000 and over are rounded to the nearest 1,000

Numbers from 1,000 – 99,999 are rounded to the nearest 100

Numbers from 10 – 999 are rounded to the nearest 10

Numbers under 10 are unrounded.

Information on the population in STCs and SCHs has been supplied by the Youth Justice Board.

All figures are provisional pending publication of the annual Offender Management Caseload Statistics.

Definitions

Population in custody - this includes those held in prison establishments, police cells under Operation Safeguard, secure training centres (STCs) and secure children's homes (SCHs). All coverage is for England and Wales.

Population in prison – this includes those held in prisons in England and Wales, including the three removal centres (where people are held under immigration powers prior to removal from the UK) of Dover, Haslar and Lindholme.

Sentenced population – this includes those sentenced to an immediate custodial sentence and fine defaulters.

Immediate custodial sentence – this does not include fine defaulters but does include recalls.

Adult prisoners – these are prisoners aged 21 years and over.

Young adults – these are prisoners aged 18 to 20, but including 21 year old prisoners who were aged 20 or under at conviction who have not been reclassified as part of the adult population

Indeterminate sentences – these cover life sentences and indeterminate sentences for public protection (IPP).

Recalls – these are prisoners who are returned to custody having broken the terms of their licence.

Contact points for further information

Current and previous editions of this publication are available for download at www.justice.gov.uk/publications/populationincustody.htm . Future reports will be published on a monthly basis. Spreadsheet files of the tables contained in this document are also available for download from this address.

Press enquiries should be directed to the Ministry of Justice press office:

Tel: 020 3334 3536

Other enquiries about these statistics should be directed to:

Ministry of Justice
Justice Statistics Analytical Services
7th Floor
102 Petty France
London
SW1H 9AJ
Tel: 020 3334 5064

General enquiries about the statistical work of the Ministry of Justice can be e-mailed to:
statistics.enquiries@justice.gsi.gov.uk

General information about the official statistics system of the UK is available from
www.statistics.gov.uk

© Crown copyright
Produced by the Ministry of Justice

Alternative formats are available on request from statistics.enquiries@justice.gsi.gov.uk

Table 1: Population in custody: by type of custody and sex

	Apr-09			Apr-10			Percentage change 2009 to 2010		
	Males	Females	Total	Males	Females	Total	Males	Females	Total
All population in custody, of which	78,868	4,417	83,286	81,098	4,397	85,495	3	0	3
Prisons	78,534	4,299	82,833	80,758	4,328	85,086	3	1	3
Police cells	0	0	0	0	0	0	*	*	*
SCHs	159	36	198	140	20	160	-12	*	-19
STCs	175	82	255	200	49	249	14	*	-2
All population in prison, of which	78,534	4,299	82,833	80,758	4,328	85,086	3	1	3
Remand	12,195	762	12,957	12,015	799	12,814	-1	5	-1
Untried	7,971	508	8,479	7,493	487	7,980	-6	-4	-6
Convicted unsentenced	4,224	254	4,478	4,522	312	4,834	7	23	8
Sentenced	64,832	3,483	68,315	67,607	3,484	71,091	4	0	4
Fine defaulter	86	11	97	124	13	137	44	*	41
Less than 6 months	3,729	391	4,120	4,173	437	4,610	12	12	12
6 months to less than 12 months	3,107	300	3,407	2,990	295	3,285	-4	-2	-4
12 months to less than 4 years	19,379	1,193	20,572	19,909	1,192	21,101	3	0	3
4 years or more (excluding Indeterminate sentences)	21,375	982	22,357	22,666	988	23,654	6	1	6
Indeterminate sentences	11,650	370	12,020	12,537	381	12,918	8	3	7
Recalls	5,506	236	5,742	5,208	178	5,386	-5	-25	-6
Non-criminal prisoners	1,507	54	1,561	1,136	45	1,181	-25	*	-24
All adult population in prison, of which	67,505	3,830	71,335	69,537	3,838	73,375	3	0	3
Remand	9,766	654	10,420	9,689	678	10,367	-1	4	-1
Untried	6,423	446	6,869	6,043	417	6,460	-6	-7	-6
Convicted unsentenced	3,343	208	3,551	3,646	261	3,907	9	25	10
Sentenced	56,330	3,127	59,457	58,784	3,119	61,903	4	0	4
Fine defaulter	84	11	95	120	13	133	43	*	40
Less than 6 months	3,003	333	3,336	3,393	380	3,773	13	14	13
6 months to less than 12 months	2,264	262	2,526	2,261	260	2,521	0	-1	0
12 months to less than 4 years	15,399	1,050	16,449	15,800	1,033	16,833	3	-2	2
4 years or more (excluding Indeterminate sentences)	19,714	917	20,631	20,695	919	21,614	5	0	5
Indeterminate sentences	10,990	353	11,343	11,861	359	12,220	8	2	8
Recalls	4,876	201	5,077	4,654	155	4,809	-5	-23	-5
Non-criminal prisoners	1,409	49	1,458	1,064	41	1,105	-24	*	-24
All 15 -17 year olds in prison, of which	2,105	51	2,156	1,668	39	1,707	-21	*	-21
Remand	502	10	512	486	9	495	-3	*	-3
Untried	339	8	347	379	6	385	12	*	11
Convicted unsentenced	163	2	165	107	3	110	-34	*	-33
Sentenced	1,602	41	1,643	1,181	30	1,211	-26	*	-26
Fine defaulter	0	0	0	0	0	0	*	*	*
Less than 6 months	174	9	183	120	8	128	-31	*	-30
6 months to less than 12 months	367	5	372	257	8	265	-30	*	-29
12 months to less than 4 years	756	15	771	578	9	587	-24	*	-24
4 years or more (excluding Indeterminate sentences)	151	6	157	142	0	142	-6	*	-10
Indeterminate sentences	61	2	63	56	4	60	-8	*	-5
Recalls	93	4	97	28	1	29	*	*	*
Non-criminal prisoners	1	0	1	1	0	1	*	*	*
All young adults in prison, of which	8,924	418	9,342	9,553	451	10,004	7	8	7
Remand	1,927	98	2,025	1,840	112	1,952	-5	14	-4
Untried	1,209	54	1,263	1,071	64	1,135	-11	19	-10
Convicted unsentenced	718	44	762	769	48	817	7	*	7
Sentenced	6,900	315	7,215	7,642	335	7,977	11	6	11
Fine defaulter	2	0	2	4	0	4	*	*	*
Less than 6 months	552	49	601	660	49	709	20	*	18
6 months to less than 12 months	476	33	509	472	27	499	-1	*	-2
12 months to less than 4 years	3,224	128	3,352	3,531	150	3,681	10	17	10
4 years or more (excluding Indeterminate sentences)	1,510	59	1,569	1,829	69	1,898	21	17	21
Indeterminate sentences	599	15	614	620	18	638	4	*	4
Recalls	537	31	568	526	22	548	-2	*	-4
Non-criminal prisoners	97	5	102	71	4	75	-27	*	-26

Young adults are those aged 18 - 20 and those 21 year olds who were aged 20 or under at conviction who have not been reclassified as part of the adult population

* indicates that one or both of the comparative numbers are less than 50 which could give rise to misleading percentage changes

Table 2: Population in prison by offence and sex - remand and immediate custodial sentence

	Apr-09		Apr-10		Percentage change 2009 to 2010	
	Remand	Immediate custodial sentence (includes recalls)	Remand	Immediate custodial sentence (includes recalls)	Remand	Immediate custodial sentence (includes recalls)
All prisoners	12,957	68,218	12,814	70,954	-1	4
Violence against the person	3,314	19,653	3,269	20,424	-1	4
Sexual offences	1,020	8,105	1,100	9,300	8	15
Robbery	1,537	8,636	1,393	8,865	-9	3
Burglary	1,496	7,358	1,352	6,851	-10	-7
Theft and Handling	900	3,192	972	3,758	8	18
Fraud and Forgery	515	1,962	443	1,588	-14	-19
Drug offences	1,752	10,424	1,859	10,925	6	5
Motoring offences	86	1,050	65	892	-24	-15
Other offences	1,825	6,197	1,956	7,351	7	19
Offence not recorded	512	1,641	405	1,000	-21	-39
All male prisoners	12,195	64,746	12,015	67,483	-1	4
Violence against the person	3,139	18,789	3,103	19,509	-1	4
Sexual offences	998	8,049	1,072	9,225	7	15
Robbery	1,473	8,302	1,330	8,577	-10	3
Burglary	1,459	7,154	1,320	6,706	-10	-6
Theft and Handling	791	2,795	864	3,317	9	19
Fraud and Forgery	438	1,689	378	1,386	-14	-18
Drug offences	1,638	9,551	1,726	10,094	5	6
Motoring offences	85	1,035	63	880	-26	-15
Other offences	1,696	5,828	1,801	6,879	6	18
Offence not recorded	478	1,554	358	910	-25	-41
All female prisoners	762	3,472	799	3,471	5	0
Violence against the person	175	864	166	915	-5	6
Sexual offences	22	56	28	75	*	34
Robbery	64	334	63	288	-2	-14
Burglary	37	204	32	145	*	-29
Theft and Handling	109	397	108	441	-1	11
Fraud and Forgery	77	273	65	202	-16	-26
Drug offences	114	873	133	831	17	-5
Motoring offences	1	15	2	12	*	*
Other offences	129	369	155	472	20	28
Offence not recorded	34	87	47	90	*	3

Table 2: Population in prison by offence and sex - remand and immediate custodial sentence

	Apr-09		Apr-10		Percentage change 2009 to 2010	
	Remand	Immediate custodial sentence (includes recalls)	Remand	Immediate custodial sentence (includes recalls)	Remand	Immediate custodial sentence (includes recalls)
All adult prisoners	10,420	59,362	10,367	61,770	-1	4
Violence against the person	2,642	17,096	2,592	17,742	-2	4
Sexual offences	899	7,716	961	8,737	7	13
Robbery	969	6,573	899	6,759	-7	3
Burglary	1,138	6,241	1,007	5,683	-12	-9
Theft and Handling	760	2,768	816	3,334	7	20
Fraud and Forgery	487	1,905	415	1,551	-15	-19
Drug offences	1,535	9,671	1,640	10,122	7	5
Motoring offences	72	929	53	802	-26	-14
Other offences	1,500	5,195	1,657	6,201	10	19
Offence not recorded	418	1,268	327	839	-22	-34
All adult male prisoners	9,766	56,246	9,689	58,664	-1	4
Violence against the person	2,501	16,369	2,460	16,963	-2	4
Sexual offences	880	7,662	936	8,669	6	13
Robbery	918	6,305	848	6,529	-8	4
Burglary	1,106	6,059	979	5,551	-11	-8
Theft and handling	662	2,402	725	2,925	10	22
Fraud and Forgery	413	1,636	355	1,354	-14	-17
Drug offences	1,434	8,846	1,519	9,344	6	6
Motoring offences	71	915	51	791	-28	-14
Other offences	1,392	4,860	1,522	5,779	9	19
Offence not recorded	389	1,192	294	759	-24	-36
All adult female prisoners	654	3,116	678	3,106	4	0
Violence against the person	141	727	132	779	-6	7
Sexual offences	19	54	25	68	*	26
Robbery	51	268	51	230	0	-14
Burglary	32	182	28	132	*	-27
Theft and handling	98	366	91	409	-7	12
Fraud and Forgery	74	269	60	197	-19	-27
Drug offences	101	825	121	778	20	-6
Motoring offences	1	14	2	11	*	*
Other offences	108	335	135	422	25	26
Offence not recorded	29	76	33	80	*	5

Table 2: Population in prison by offence and sex - remand and immediate custodial sentence

	Apr-09		Apr-10		Percentage change 2009 to 2010	
	Remand	Immediate custodial sentence (includes recalls)	Remand	Immediate custodial sentence (includes recalls)	Remand	Immediate custodial sentence (includes recalls)
All aged 15-17	512	1,643	495	1,211	-3	-26
Violence against the person	132	424	160	303	21	-29
Sexual offences	22	71	22	68	*	-4
Robbery	148	427	112	323	-24	-24
Burglary	79	260	63	204	-20	-22
Theft and Handling	16	130	18	71	*	-45
Fraud and Forgery	3	2	0	4	*	*
Drug offences	38	78	44	54	*	-31
Motoring offences	1	19	0	7	*	*
Other offences	51	212	50	168	-2	-21
Offence not recorded	22	20	26	9	*	*
All males aged 15-17	502	1,602	486	1,181	-3	-26
Violence against the person	128	411	157	294	23	-28
Sexual offences	22	70	22	67	*	-4
Robbery	146	417	112	317	-23	-24
Burglary	78	258	63	201	-19	-22
Theft and handling	16	124	17	66	*	-47
Fraud and Forgery	3	2	0	4	*	*
Drug offences	38	76	43	54	*	-29
Motoring offences	1	19	0	7	*	*
Other offences	49	207	48	162	*	-22
Offence not recorded	21	18	24	9	*	*
All females aged 15-17	10	41	9	30	*	*
Violence against the person	4	13	3	9	*	*
Sexual offences	0	1	0	1	*	*
Robbery	2	10	0	6	*	*
Burglary	1	2	0	3	*	*
Theft and handling	0	6	1	5	*	*
Fraud and Forgery	0	0	0	0	*	*
Drug offences	0	2	1	0	*	*
Motoring offences	0	0	0	0	*	*
Other offences	2	5	2	6	*	*
Offence not recorded	1	2	2	0	*	*

Table 2: Population in prison by offence and sex - remand and immediate custodial sentence

	Apr-09		Apr-10		Percentage change 2009 to 2010	
	Remand	Immediate custodial sentence (includes recalls)	Remand	Immediate custodial sentence (includes recalls)	Remand	Immediate custodial sentence (includes recalls)
All young adults	2,025	7,213	1,952	7,973	-4	11
Violence against the person	540	2,133	517	2,379	-4	12
Sexual offences	99	318	117	495	18	56
Robbery	420	1,636	382	1,783	-9	9
Burglary	279	857	282	964	1	12
Theft and Handling	124	294	138	353	11	20
Fraud and Forgery	25	55	28	33	*	*
Drug offences	179	675	175	749	-2	11
Motoring offences	13	102	12	83	*	-19
Other offences	274	790	249	982	-9	24
Offence not recorded	72	353	52	152	-28	-57
All male young adults	1,927	6,898	1,840	7,638	-5	11
Violence against the person	510	2,009	486	2,252	-5	12
Sexual offences	96	317	114	489	19	54
Robbery	409	1,580	370	1,731	-10	10
Burglary	275	837	278	954	1	14
Theft and handling	113	269	122	326	8	21
Fraud and Forgery	22	51	23	28	*	*
Drug offences	166	629	164	696	-1	11
Motoring offences	13	101	12	82	*	-19
Other offences	255	761	231	938	-9	23
Offence not recorded	68	344	40	142	*	-59
All female young adults	98	315	112	335	14	6
Violence against the person	30	124	31	127	*	2
Sexual offences	3	1	3	6	*	*
Robbery	11	56	12	52	*	-7
Burglary	4	20	4	10	*	*
Theft and handling	11	25	16	27	*	*
Fraud and Forgery	3	4	5	5	*	*
Drug offences	13	46	11	53	*	*
Motoring offences	0	1	0	1	*	*
Other offences	19	29	18	44	*	*
Offence not recorded	4	9	12	10	*	*

Figures for immediate custodial population includes recallers, but excludes fine defaulters

* indicates that one or both of the comparative numbers are less than 50 which could give rise to misleading percentage changes

Table 3: Young population in prison: by type of custody and sex
30 April 2010

	15	16	17	Total - under 18	18	19	20	21	Total Young Adults
All young population in prisons, of which									
<i>Prisoners on remand</i>	34	152	309	495	608	647	579	118	1,952
Untried	26	122	237	385	370	342	352	71	1,135
Convicted unsentenced	8	30	72	110	238	305	227	47	817
<i>Prisoners sentenced</i>	108	336	767	1,211	1,413	2,536	2,740	1,288	7,977
Fine defaulter	0	0	0	0	2	0	2	0	4
Immediate custodial sentence (includes recalls)	108	336	767	1,211	1,411	2,536	2,738	1,288	7,973
<i>Non-criminal prisoners</i>	1	0	0	1	12	19	27	17	75
All young male population in prisons, of which									
<i>Prisoners on remand</i>	34	152	300	486	576	603	551	110	1,840
Untried	26	122	231	379	351	322	334	64	1,071
Convicted unsentenced	8	30	69	107	225	281	217	46	769
<i>Prisoners sentenced</i>	108	336	737	1,181	1,348	2,431	2,634	1,229	7,642
Fine defaulter	0	0	0	0	2	0	2	0	4
Immediate custodial sentence (includes recalls)	108	336	737	1,181	1,346	2,431	2,632	1,229	7,638
<i>Non-criminal prisoners</i>	1	0	0	1	12	18	26	15	71
All young female population in prisons, of which									
<i>Prisoners on remand</i>	0	0	9	9	32	44	28	8	112
Untried	0	0	6	6	19	20	18	7	64
Convicted unsentenced	0	0	3	3	13	24	10	1	48
<i>Prisoners sentenced</i>	0	0	30	30	65	105	106	59	335
Fine defaulter	0	0	0	0	0	0	0	0	0
Immediate custodial sentence (includes recalls)	0	0	30	30	65	105	106	59	335
<i>Non-criminal prisoners</i>	0	0	0	0	0	1	1	2	4

Young adults are those aged 18 - 20 and those 21 year olds who were aged 20 or under at conviction who have not been reclassified as part of the adult population

Table 4: CNA and population by sex and establishment

30 April 2010

Establishment	In use CNA¹	Total Population
Males		
Altcourse	794	1,265
Acklington	946	942
Ashfield	400	229
Ashwell	184	213
Aylesbury	441	440
Belmarsh	800	873
Buckley Hall	350	377
Blundeston	481	519
Bedford	315	477
Blantyre House	122	119
Bristol	424	614
Birmingham	1,083	1,437
Bullingdon	879	1,091
Bure	371	375
Brinsford	545	500
Bullwood Hall	220	223
Brixton	606	767
Chelmsford	554	656
Cardiff	548	815
Cookham Wood	143	118
Coldingley	494	510
Castington	400	252
Channings Wood	698	725
Canterbury	195	302
Dartmoor	572	584
Dovegate	1,060	1,098
Durham	606	972
Doncaster	771	1,105
Dorchester	146	227
Deerbolt	513	505
Dover	316	307
Erlestoke	470	466
Standford Hill (Sheppey Cluster)	464	429
Everthorpe	603	678
Exeter	322	529
Elmley (Sheppey Cluster)	735	968
Forest Bank	1,064	1,370
Ford	557	512
Frankland	859	815
Feltham	762	671
Full Sutton	596	583
Featherstone	642	650
Garth	812	828
Gloucester	225	316
Guys Marsh	497	548
Grendon/ Spring Hill	573	547
Glen Parva	652	757
Gartree	689	673
Hollesley Bay	345	338
Huntercombe	360	149
Hewell*	1,173	1,380
Holme House	1,033	1,131
Hindley	440	330
Hull	723	1,022
HighDown	999	1,073
Highpoint	920	934
Haslar	124	116
Haverigg	622	610
Isle of Wight**	1,562	1,656
Kirkham	590	587
Kennet	175	338
Kirklevington	283	271
Lancaster	159	239
Leicester	210	358
Leeds	829	1,156
Lancaster Farms	480	499
Lowdham Grange	900	825
Lindholme	1,054	1,104
Lincoln	436	650
Long Lartin	622	618
Latchmere House	207	206
Liverpool	1,176	1,295

Table 4: CNA and population by sex and establishment

30 April 2010

Establishment	In use CNA¹	Total Population
Littlehey	933	940
Lewes	495	479
Leyhill	532	516
Moorland/Moorland Open ²	987	1,016
Manchester	949	1,215
Maidstone	565	589
Mount	747	758
Edmunds Hill	379	366
Nottingham	554	701
Northallerton	147	237
North Sea Camp	318	301
Norwich	625	741
Onley	710	702
Peterborough ³	480	604
Portland	463	467
Preston	453	792
Parc	838	1,187
Kingston (Portsmouth)	199	198
Pentonville	909	1,177
Rochester	724	712
Reading	190	266
Rye Hill	600	644
Ranby	969	1,058
Risley	1,050	1,076
Stafford	741	728
Stoke Heath	576	623
Stocken	779	833
Swaleside (Sheppey Cluster)	998	999
Shepton Mallet	165	188
Swinfen Hall	604	610
Sudbury	581	578
Swansea	230	380
Shrewsbury	184	310
Thorn Cross	322	280
Usk/ Prescoed	320	426
Verne	572	583
Wellingborough	638	601
Winchester	499	691
Wakefield	748	737
Wealstun	505	520
Woodhill	656	810
Warren Hill	222	148
Wayland	957	1,005
Wymott	1,113	1,165
Werrington	160	123
Wolds	320	383
Whitemoor	448	442
Wormwood Scrubs	1,176	1,225
Whatton	734	816
Wandsworth	1,107	1,628
Wetherby	408	322
TOTAL	72,500	80,758

Table 4: CNA and population by sex and establishment

30 April 2010

Establishment		In use CNA ¹	Total Population
Females	Askham Grange	126	108
	Bronzefield	527	504
	Drake Hall	315	292
	Downview	358	334
	East Sutton Park	98	86
	Eastwood Park	326	311
	Foston Hall	283	245
	Holloway	496	439
	Low Newton	267	277
	Morton Hall	392	306
	New Hall	386	369
	Peterborough ³	360	335
	Send	282	273
	Styal	447	449
TOTAL	4,663	4,328	
Male and female establishment TOTAL	77,163	85,086	
Police cells	***		
Establishment and Police cell TOTAL	77,163	85,086	

¹ In Use CNA - Certified Normal Accommodation that is available for immediate use, excludes damaged cells, cells affected by building works and cells taken out of use due to staff shortages

² Data for Moorland/Moorland Open has been combined

³ Peterborough is a dual purpose prison for men and women

* HMP Hewell was created by an amalgamation of the three former prisons, Blakenhurst, Brockhill and Hewell Grange on 25 June 2008

** HMP Isle of Wight was created by an amalgamation of the three former prisons, Albany, Camp Hill and Parkurst on 1st April 2009

*** On 30th April 2010 up to 400 police cells available under operation safeguard which are not included in the CNA figure