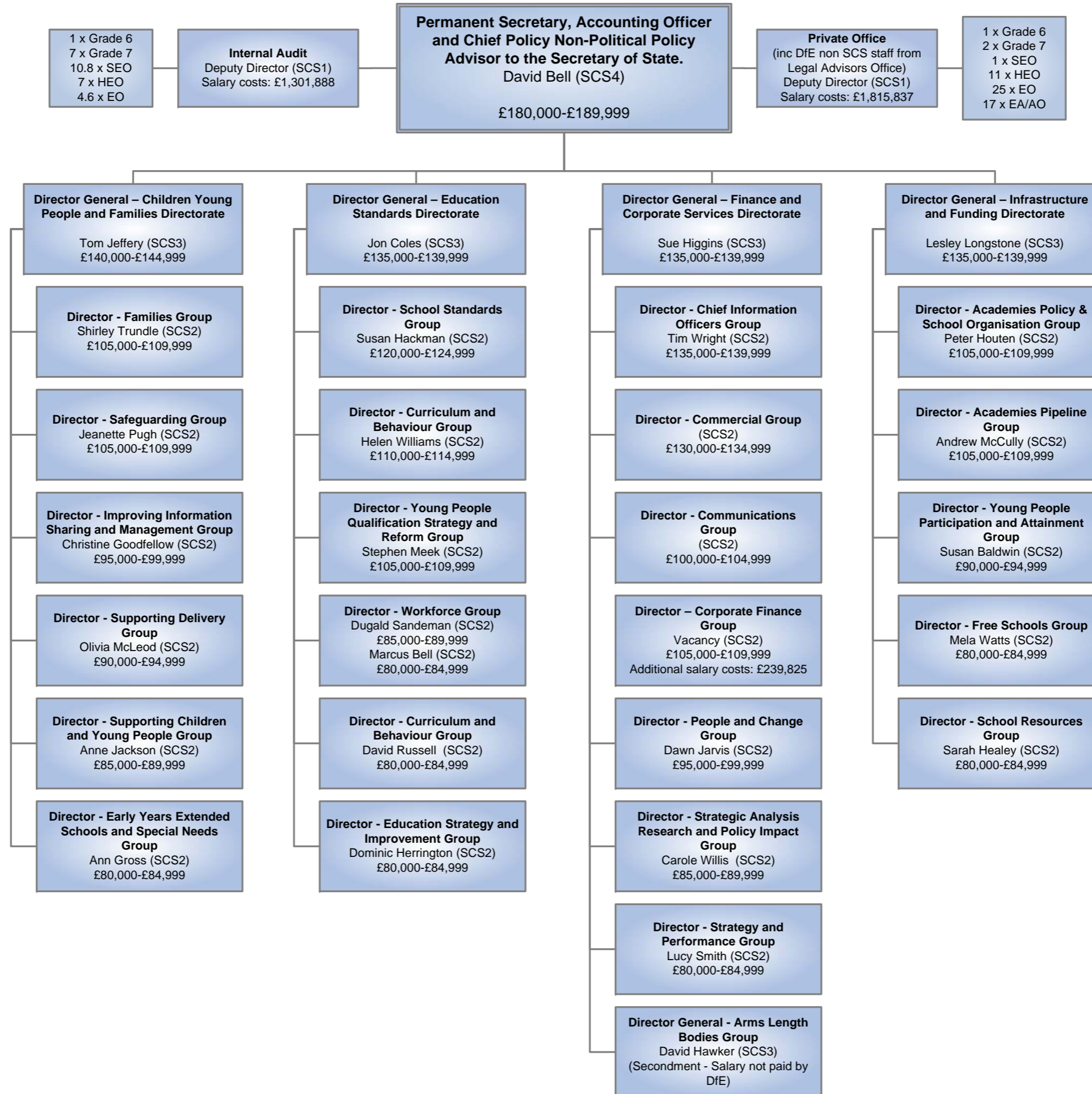


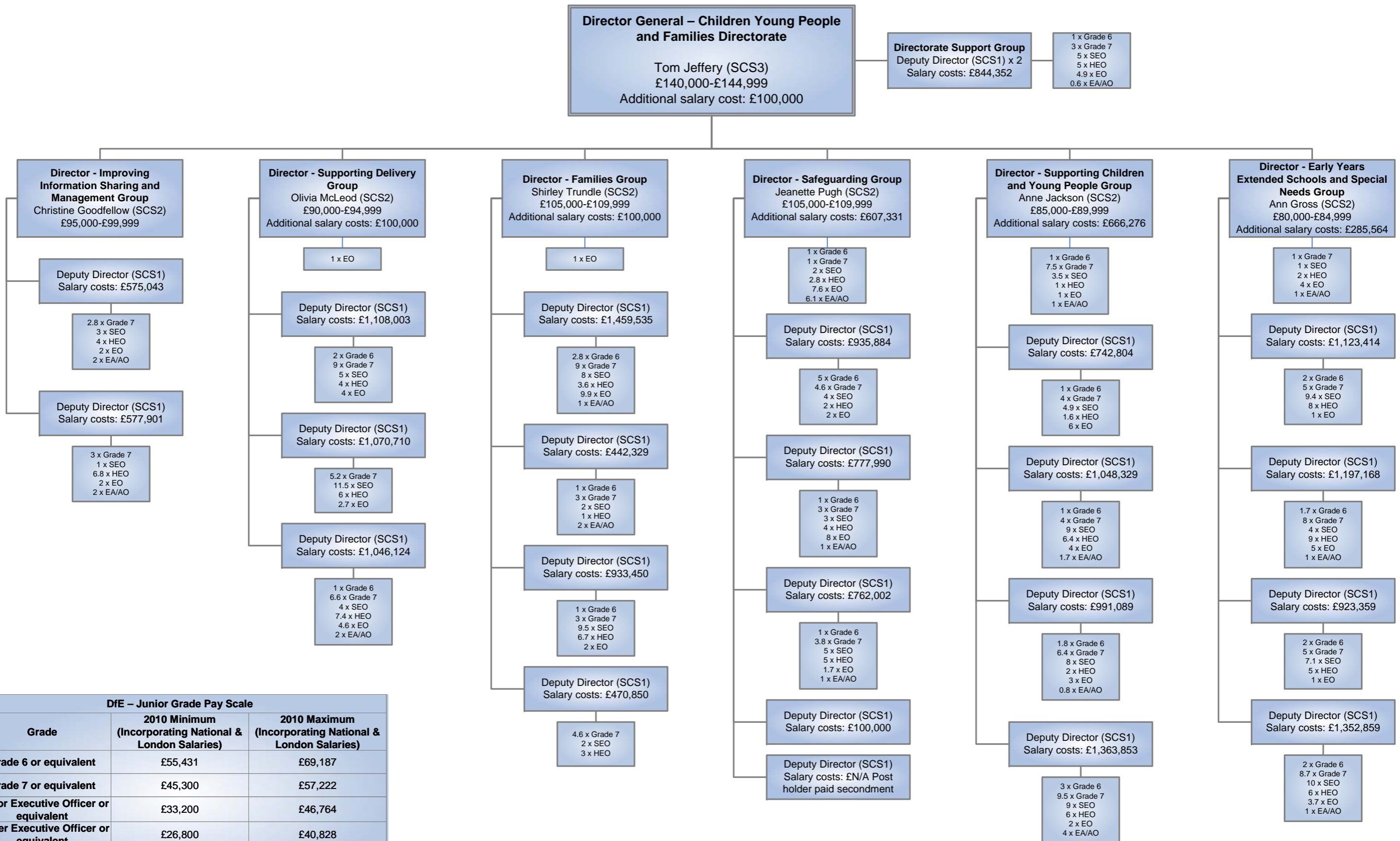
Department for Education

Tuesday, October 19, 2010



Children, Young People and Families Directorate

Friday, October 15, 2010

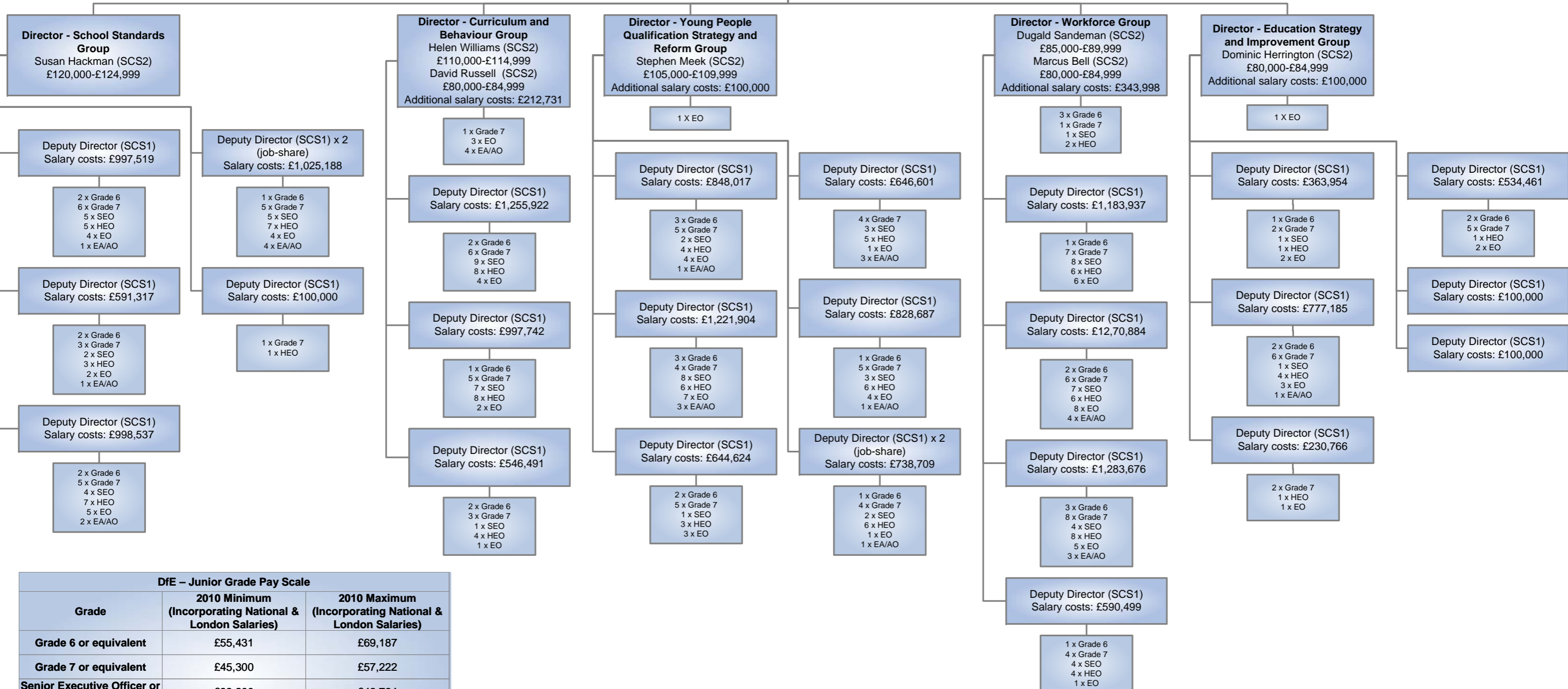


DFE – Junior Grade Pay Scale

Grade	2010 Minimum (Incorporating National & London Salaries)	2010 Maximum (Incorporating National & London Salaries)
Grade 6 or equivalent	£55,431	£69,187
Grade 7 or equivalent	£45,300	£57,222
Senior Executive Officer or equivalent	£33,200	£46,764
Higher Executive Officer or equivalent	£26,800	£40,828
Executive Officer or equivalent	£21,916	£32,232
Executive Administrator or equivalent	£15,266	£21,529

Education Standards Directorate

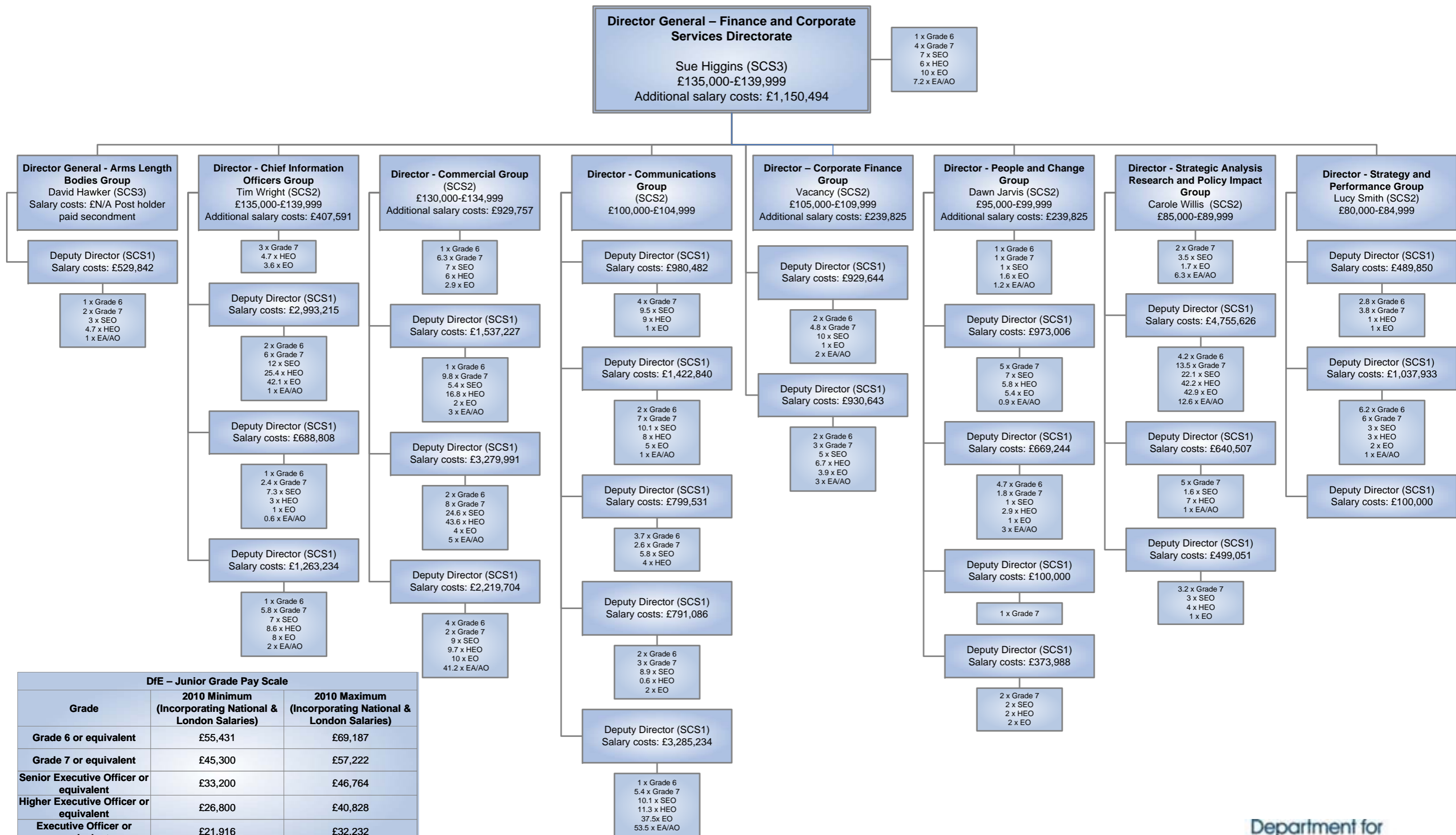
Tuesday, October 19, 2010



DfE – Junior Grade Pay Scale		
Grade	2010 Minimum (Incorporating National & London Salaries)	2010 Maximum (Incorporating National & London Salaries)
Grade 6 or equivalent	£55,431	£69,187
Grade 7 or equivalent	£45,300	£57,222
Senior Executive Officer or equivalent	£33,200	£46,764
Higher Executive Officer or equivalent	£26,800	£40,828
Executive Officer or equivalent	£21,916	£32,232
Executive Administrator or equivalent	£15,266	£21,529

Finance and Corporate Services Directorate

Friday, October 15, 2010

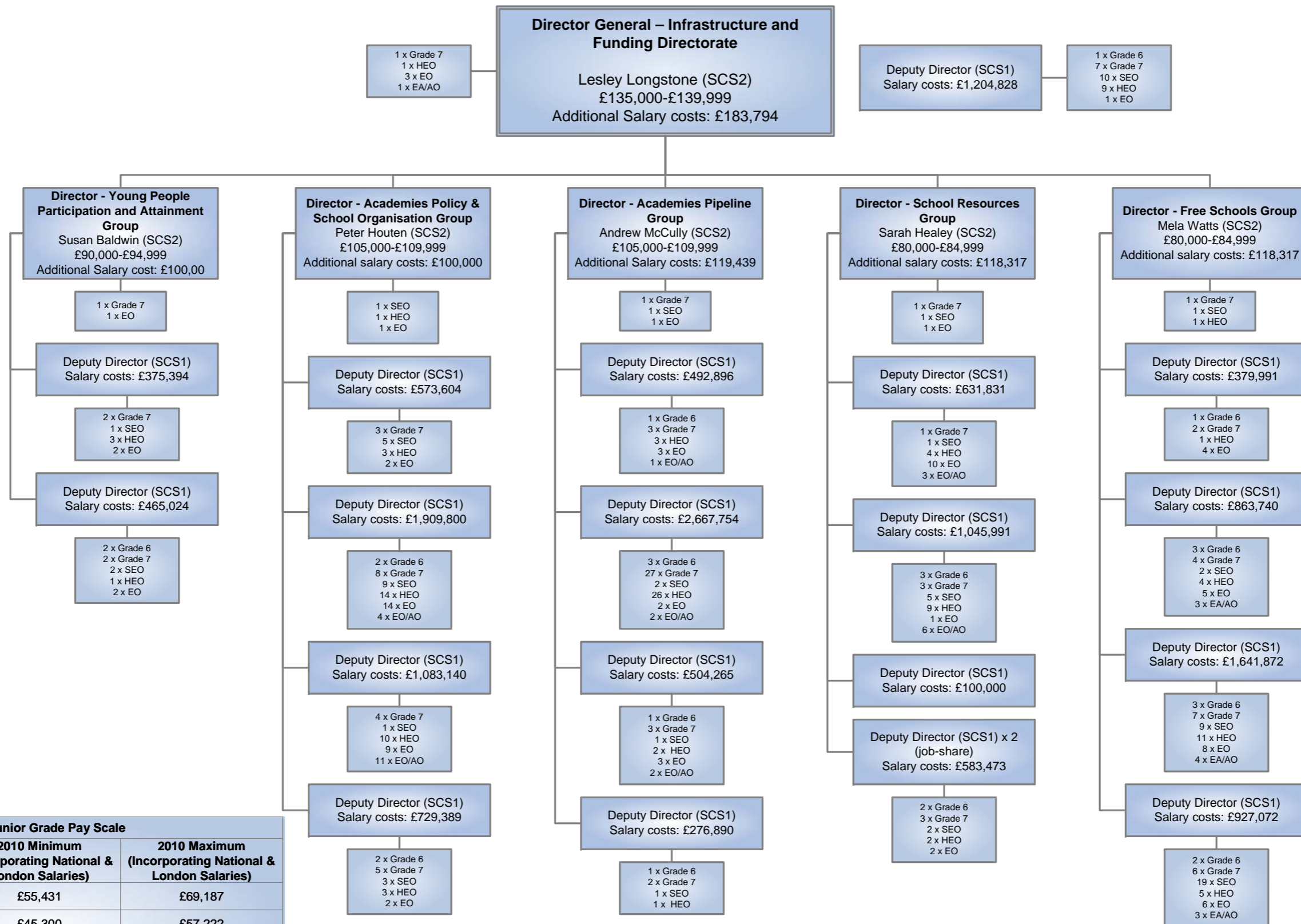


DfE – Junior Grade Pay Scale

Grade	2010 Minimum (Incorporating National & London Salaries)	2010 Maximum (Incorporating National & London Salaries)
Grade 6 or equivalent	£55,431	£69,187
Grade 7 or equivalent	£45,300	£57,222
Senior Executive Officer or equivalent	£33,200	£46,764
Higher Executive Officer or equivalent	£26,800	£40,828
Executive Officer or equivalent	£21,916	£32,232
Executive Administrator or equivalent	£15,266	£21,529

Infrastructure and Funding Directorate

Monday, October 18, 2010



DfE – Junior Grade Pay Scale

Grade	2010 Minimum (Incorporating National & London Salaries)	2010 Maximum (Incorporating National & London Salaries)
Grade 6 or equivalent	£55,431	£69,187
Grade 7 or equivalent	£45,300	£57,222
Senior Executive Officer or equivalent	£33,200	£46,764
Higher Executive Officer or equivalent	£26,800	£40,828
Executive Officer or equivalent	£21,916	£32,232
Executive Administrator or equivalent	£15,266	£21,529