

**SFR 30/2011**

**14 December 2011**

**Coverage: England**

**Theme: Children,  
Education and Skills**

**Issued by**

Department for Education  
Sanctuary Buildings  
Great Smith Street  
London SW1P 3BT

**Telephone:**

**Press Office**

020 7925 6789

**Public Enquiries**

0870 000 2288

**Statistician**

Jessica Miller

0114 274 2194

[jessica.miller@](mailto:jessica.miller@education.gsi.gov.uk)

[education.gsi.gov.uk](mailto:education.gsi.gov.uk)

**Email**

[info@education.gsi.gov.uk](mailto:info@education.gsi.gov.uk)

**Internet**

<http://www.education.gov.uk/researchandstatistics/statistics>

## **Outcomes for Children Looked After by Local Authorities in England, as at 31 March 2011**

This is the second year that this annual Statistical Release has been published. It contains information on the outcomes for looked after children as at 31 March 2011. Outcomes reported include education, health, offending and substance misuse.

For the first time this year we shall be including information to show performance against the new Impact Indicator for attainment gaps for looked after children. This indicator includes a change to the definition previously used to monitor the attainment of looked after children and covers children who have been continuously looked after for at least 6 months. These are the children who would be eligible for the pupil premium payment. In line with terminology used in the Department's Business Plan, children not looked after according to this criteria are referred to as 'the rest' throughout this publication.

The publication also includes comparisons between the new definitions used this year and those previously used which cover children continuously looked after for 12 months. However, figures for earlier years have been calculated based on the new definition to ensure that comparisons are made on a consistent basis. Figures on other outcomes such as health and offending, which are collected directly from Local Authorities continue to be presented for children who are looked after continuously for 12 months at 31 March.

The information is taken from the matched administrative data taken from the Children Looked After Database and the National Pupil Database (CLA-NPD). Educational attainment, absence and exclusions data comes from the National Pupil Database and information on health and offending comes from the Children Looked After Database. For further details of the data collection, matching process and methodology please refer to the Technical Notes.

### **Key Points**

Of the children looked after continuously for 6 months during the year ending 31 March 2011:

- At Key Stage 1, 65 per cent achieved the expected level in reading and 71 per cent achieved the expected level in mathematics compared with 63 per cent and 68 per cent in 2010 for each subject respectively.
- At Key Stage 2, 53 per cent achieved the expected level in English and 52 per cent achieved the expected level in mathematics compared with 51 per cent and 50 per cent in 2010 for each subject respectively.
- At Key Stage 4, 13.2 per cent achieved the 5+ A\*-C at GCSE or equivalent including English and mathematics compared with 12.0 per cent in 2010.

## Impact Indicators

- 43 per cent achieved the expected level in both English and mathematics in Key Stage 2 tests. The attainment gap Impact Indicator between looked after children and 'the rest' is 31 percentage points, a narrowing of 2 percentage points compared with the gap in 2010.
- 13.9 per cent achieved 'The Basics' at Key Stage 4 (English and mathematics at GCSE or equivalent at grades A\* to C). The attainment gap Impact Indicator between looked after children and 'the rest' is 44.7 percentage points, a widening of 3.9 percentage points compared with the attainment gap in 2010.

## Attainment of Looked After Children in Key Stage 1 Teacher Assessments

There were 2,230 children looked after continuously for 6 months during the year ending 31 March 2011 who were eligible for Key Stage 1 teacher assessments. Of these:

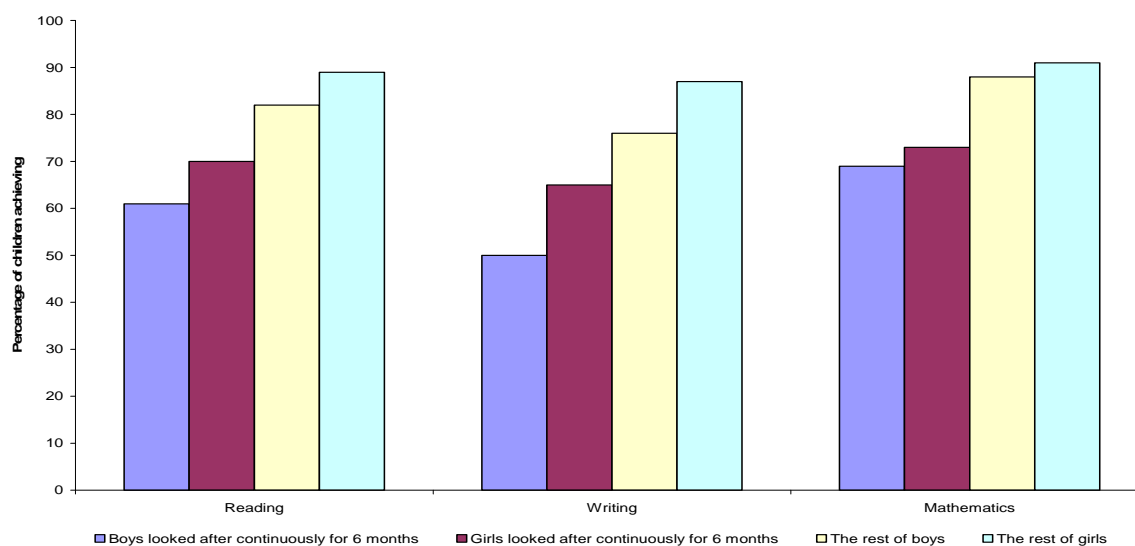
- 65 per cent achieved the expected level in reading, compared with 63 per cent in 2010.
- 57 per cent achieved the expected level in writing, compared with 56 per cent in 2010.
- 71 per cent achieved the expected level in mathematics, compared with 68 per cent in 2010.

For each subject, the percentage of looked after children achieving the expected level is lower than that achieved by 'the rest'. The percentage of non-looked after children achieving the expected level was 85 per cent in reading, 81 per cent in writing and 90 per cent in mathematics.

Both groups of children have experienced an increase in the percentage achieving the expected level in each subject between 2007 and 2011; therefore the attainment gaps have remained similar.

For children looked after continuously for 6 months during the year ending 31 March 2011 a higher proportion of girls achieved the expected level in all subjects compared with boys. This gender difference was greatest in writing where 65 per cent of girls achieved the expected level compared with 50 per cent of boys, a difference of 15 percentage points. Chart A shows the gender differences in the percentage of looked after boys and girls who achieved the expected level compared to the figures for the rest of boys and the rest of girls for 2011.

**Chart A: Percentage of children achieving the expected level at Key Stage 1 teacher assessments, by gender**



## **Attainment of Looked After Children in Key Stage 2 Tests**

There were 2,640 children looked after continuously for 6 months during the year ending 31 March 2011 who were eligible to sit Key Stage 2 tests. Of these:

- 53 per cent achieved the expected level in English, an increase of 2 percentage points from 2010.
- 52 per cent achieved the expected level in mathematics, up 2 percentage points from 2010.
- 43 per cent achieved the expected level in both English and mathematics, again up 2 percentage points compared to 2010.

For each subject the percentage of children looked after continuously for 6 months who achieved the expected level is lower than that achieved by 'the rest' i.e. non-looked after children. The percentage of 'the rest' achieving the expected level was 81 per cent in English, 80 per cent in mathematics and 74 per cent in both English and mathematics.

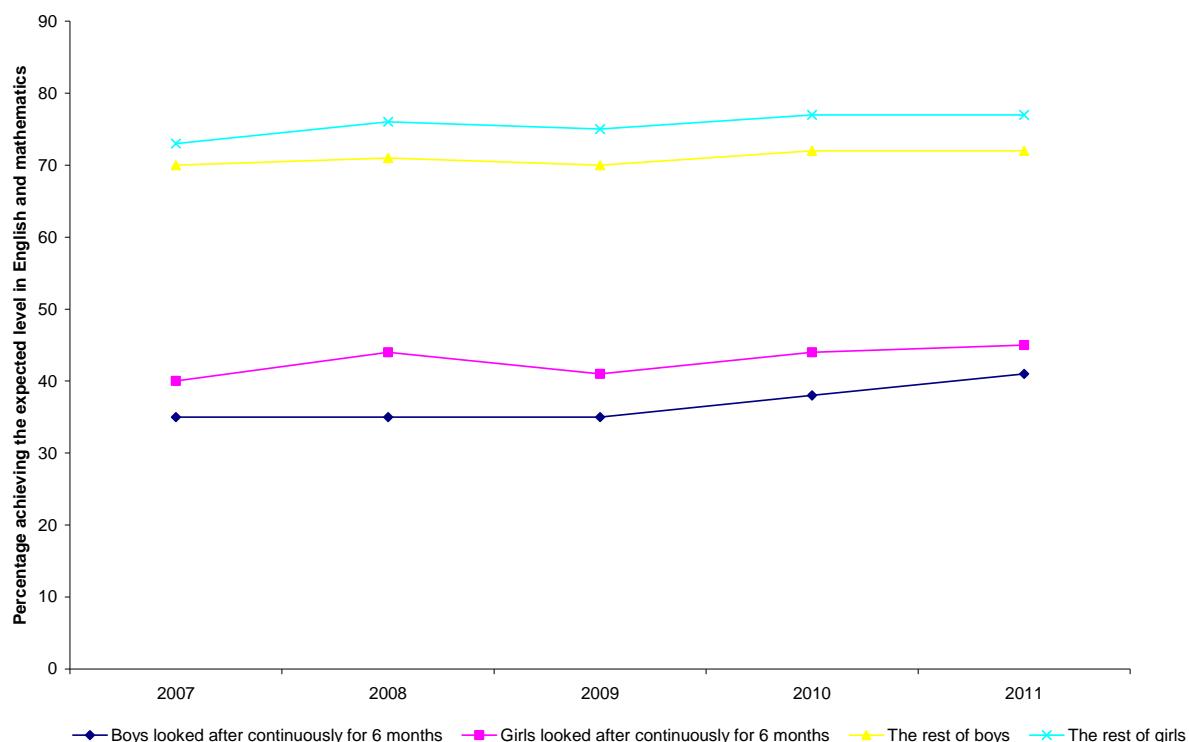
The percentage of looked after children achieving the expected level in English, mathematics and English and mathematics has increased over the period 2007 to 2011. Over the same time period, the percentage of non-looked after children achieving the expected level in English has remained static and has only slightly increased for mathematics and English and mathematics. This has meant that the attainment gap has decreased by 4 percentage points for all subjects. The attainment gap for English and mathematics, the new Impact Indicator for looked after children at Key Stage 2 had decreased from 35 percentage points difference to 31 percentage points difference between 2007 and 2011.

74 percent of looked after children achieve 2 levels of progress in English between Key Stage 1 and Key Stage 2, and 66 per cent achieve 2 levels of progress in mathematics. This compares with 83 per cent and 82 percent for non-looked after children, respectively.

The gender differences seen in Key Stage 1 do not appear across all subjects at Key Stage 2, 49 per cent of looked after boys achieved the expected level in English compared with 59 per cent of looked after girls. However in mathematics, 53 per cent of boys achieved the expected level compared with 51 per cent of girls.

However, the attainment gap for boys is decreasing in all subjects. This is due to a similar percentage of non-looked after boys achieving the expected level each year, but the proportion of looked after boys achieving the expected level increasing between 2007 and 2011. With girls, for both those looked after continuously for 6 months and non-looked after girls, the proportion achieving the expected level in both English and mathematics is increasing, meaning the attainment gap is staying around the same over the time period.

**Chart B: Percentages of children achieving the expected level in both English and mathematics in Key Stage 2 from 2007 to 2011**



#### Attainment of Looked After Children at Key Stage 4

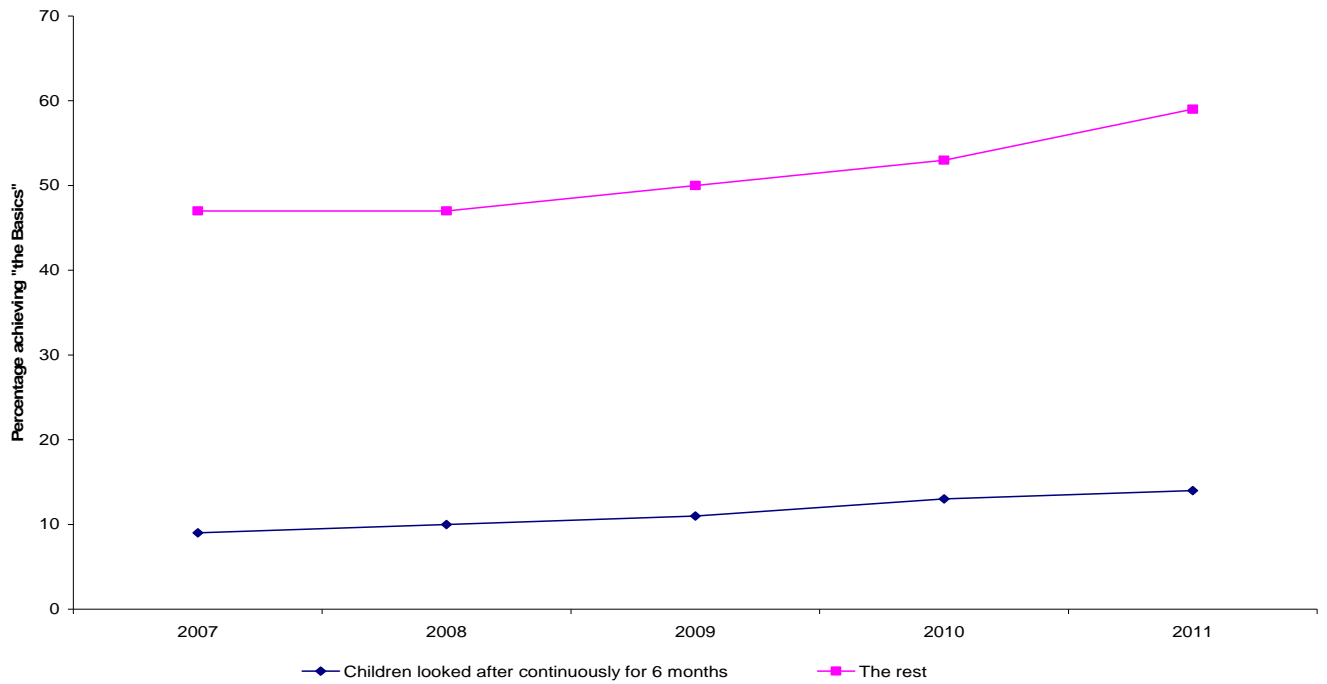
There were 5,680 children looked after continuously for 6 months during the year ending 31 March 2011 who were eligible to sit Key Stage 4 tests. Of these:

- 13.9 per cent achieved English & mathematics GCSE or equivalent at grade A\* to C compared with 12.7 per cent in 2010.
- 13.2 per cent achieved 5 or more GCSEs including English and mathematics at grade A\* to C, an increase of 1.2 percentage points compared with 2010.
- 31.5 per cent achieved 5 or more GCSEs or equivalent at grades A\* to C, compared with 26.7 per cent in 2010.
- 31.5 per cent achieved the expected level of progress since Key Stage 2 in English, and 24.4 per cent achieved the expected level of progress since Key Stage 2 in mathematics.

The percentage of children looked after continuously for 6 months who achieved each of the GCSE outcomes is lower than the percentage achieved by 'the rest' i.e. non-looked after children. Although the percentage of children looked after continuously for 6 months achieving 'the Basics', (achieving English and mathematics GCSE or equivalent at grade A\* to C) has increased between 2007 and 2011, the improvement in the attainment of non-looked after children has increased faster. This means that the attainment gap which exists has continued to broaden.

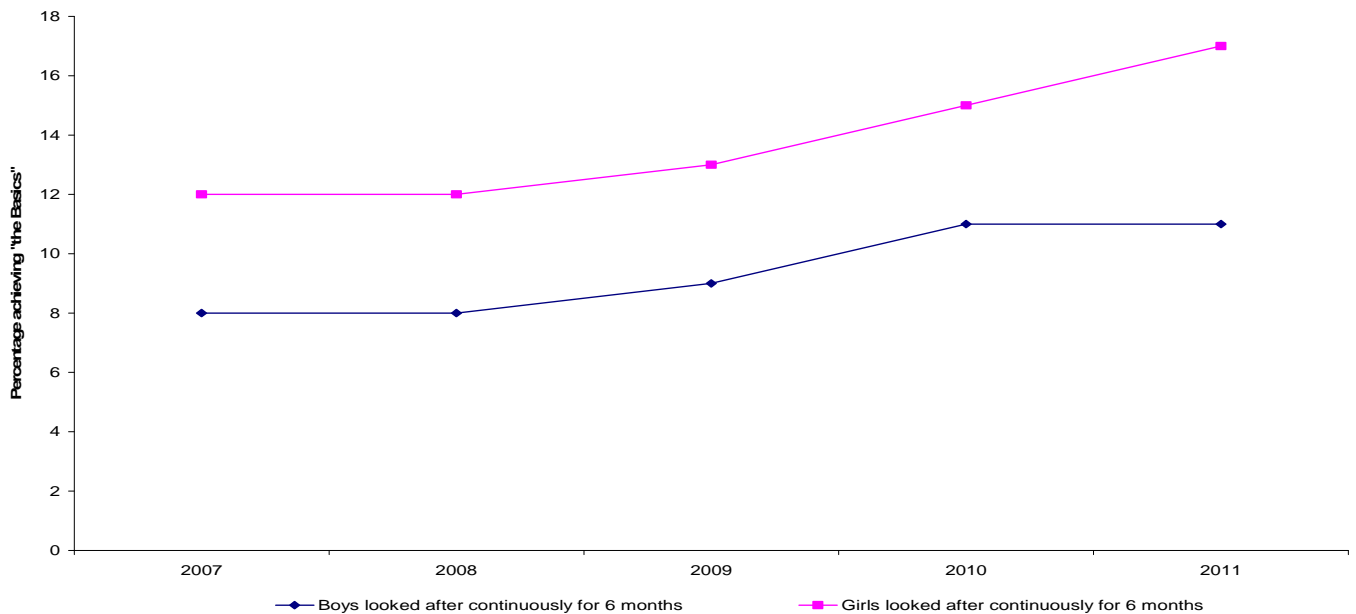
For the new Impact Indicator for looked after children at Key Stage 4, the attainment gap in 2011 for 'the Basics' was 44.7 per cent. This increased from 37.2 per cent in 2007. The proportion of looked after children achieving 'the Basics' has increased by 4.4 percentage points, but the proportion of 'the rest' achieving the same has increased more, by 11.9 percentage points.

**Chart C: Percentage of children looked after continuously for 6 months and ‘the rest’ achieving ‘the Basics’ GCSE or equivalent English and mathematics at grades A\* to C from 2007 to 2011**



In 2011, 17.1 per cent of looked after girls achieved ‘the Basics’, this compared with 11.3 per cent for looked after boys – a gender gap of 5.8 percentage points. This gender gap has widened since 2007 when it was 4.0 percentage points (11.6 per cent of girls, and 7.6 per cent of boys, achieving GCSE English and mathematics at grades A\* to C).

**Chart D: Percentage of boys and girls looked after continuously for 6 months achieving ‘the Basics’ GCSE or equivalent English and mathematics at grades A\* to C from 2007 to 2011**



## Impact Indicators

As announced in the Department's Business Plan, a range of impact indicators have been introduced to improve the transparency of Government. There are two impact indicators which are presented for the first time in this publication which cover the attainment gaps for looked after children at 11 and 16.

At Key Stage 2, comparisons are made for the percentage of pupils at the end of Key Stage 2 achieving the expected level (level 4 or above) in both English and mathematics. At Key Stage 4, comparisons are made for the percentage of pupils at the end of Key Stage 4 achieving the 'Basics', the current Basics indicator shows the proportion of pupils achieving good GCSE grades (A\*-C) in both English and mathematics.

### Summary of Attainment Gaps Impact Indicators for Looked After Children

	Key Stage 2		Key Stage 4	
	2007	2011	2007	2011
Number of LAC	2,880	2,640	4,910	5,680
% of LAC achieving the 'Basics'	37%	43%	9.5%	13.9%
Number of 'The Rest'	582,710	552,430	668,670	633,260
% of 'The Rest' achieving the 'Basics'	72%	74%	46.7%	58.6%
Attainment Gap	35 ppts	31 ppts	37.2 ppts	44.7 ppts

Further information about the Department's Business Plan and the Quarterly Data Summary, where these figures will be presented, can be found on the Department's website via the link below:  
<http://www.education.gov.uk/aboutdfe/departmentalinformation/business%20plan/a00192402/departme nt-business-plan-quarterly-data-summary-qds>

### **Comparison between the cohorts used to show attainment for looked after children**

In 2011 new criteria have been used within this publication to monitor the attainment of looked after children. The children included in the looked after children group are those children who are looked after during the year who have been looked after continuously for 6 months. These are the pupils who would be eligible for the new pupil premium payment. This measure compares the attainment of these looked after children with the attainment of 'the rest'. 'The rest' is defined as all children who do not meet these specific criteria.

In the previous publication in 2010, the definition of looked after children was those children looked after continuously for at least 12 months at 31 March, and were the right age to be sitting the relevant Key Stage. These looked after children were compared with the results for all children, rather than 'the rest'. Under the previous definition all children identified via the SSDA903 return from local authorities as meeting this 12 month definition would be included in the denominator for any calculations irrespective of whether we had matched attainment information. This methodology has been changed for the new definition and we ensure that only children for whom matched attainment information has been obtained are included in calculations.

The numbers of looked after children are always higher using the new definition. In 2011, there were 5,680 looked after children eligible for Key Stage 4 using the new definition and 5,040 using the old definition.

The percentages of looked after children achieving the expected level of attainment is often slightly higher, but not always, using the new definition. In 2011,

- The proportion of children eligible for the Key Stage 1 assessments achieving the expected level in reading is 65 per cent with the new definition, and 59 per cent using the old definition of children looked after continuously for 12 months at 31 March.
- For those children eligible for Key Stage 2 tests, using the new definition 43 per cent achieve the expected level in English and mathematics, compared with 40 per cent using the old definition.
- The differences are much smaller at Key Stage 4. There are 13.9 per cent of children achieving 'the Basics' using the new definition compared with 13.4 per cent using the old definition, a difference of 0.5 percentage points. Looking at the percentage achieving 5+ A\*-C at GCSE or equivalent including English and mathematics, 13.2 per cent achieved this using the new definition and 12.8 using the old definition.

## **OTHER OUTCOMES FOR LOOKED AFTER CHILDREN**

The information in this section covers the information on other outcomes such as offending, health and substance misuse which is collected directly from Local Authorities via the SSDA903 return. As in previous years, in 2011, this information continued to be collected for the cohort of children who had been looked after continuously for 12 months at 31 March.

### **Offending by children who had been looked after continuously for at least 12 months**

Of the 30,230 children looked after continuously for 12 months at 31 March 2011 who were aged between 10 and 17 years, 2,210 (7.3 per cent) had been convicted or subject to a final warning or reprimand during the year. This compares with 7.9 per cent in 2010.

Offending was higher in older children and more frequent in boys:

- For children aged 13 to 15 who had been looked after continuously for 12 months, 8.7 per cent of boys and 5.4 per cent of girls had been convicted or subject to a final warning or reprimand during the year.
- For children aged 16 to 17 who had been looked after continuously for 12 months, 13.9 per cent of boys and 8.2 per cent of girls had been convicted or subject to a final warning or reprimand during the year.

### **Substance Misuse by children who had been looked after continuously for at least 12 months**

Of the children looked after continuously for 12 months at 31 March, 1,960 children (4.3 per cent) were identified as having a substance misuse problem during the year. Of these, 56.6 per cent received an intervention for the problem with a further 34.9 per cent refused the intervention which was offered.

Substance misuse was more common among older children, 1,340 children identified as having a substance misuse problem were in the 16 to 17 year old age group. This represents 11.9 per cent of all children looked after continuously for 12 months who are in this age group. Of these 1,340 children, 61.6 per cent were boys and 38.4 per cent were girls.

## **Health Care of children who had been looked after continuously for at least 12 months**

Of the children looked after continuously for 12 months at 31 March:

- 79.0 per cent were up to date in their immunisations
- 82.4 per cent had their teeth checked by a dentist within the last 12 months
- 84.3 per cent had their annual health assessment

A lower percentage of children looked after continuously for 12 months aged 16 and over were up to date in these health checks compared with younger children:

- 85.5 per cent of children aged 10 to 15 were up to date with dental checks compared with 73.5 per cent of children aged 16 and over.
- 84.2 per cent of children aged 5 to 9 were up to date with immunisations compared with 70.1 per cent of children aged 16 and over.

There were 9,000 children looked after continuously for 12 months at 31 March who were aged 5 or under, of these 76.5 per cent were up to date in their development assessments (health surveillance/promotion checks).

## **Education and employment status at 30 September 2010 of children who had been looked after continuously for at least 12 months**

There were 5,750 children looked after continuously for 12 months at 31 March 2011 who completed National Curriculum year 11 during the 2009/10 school year. Of these 5,750 children:

- 70.5 per cent were in full time education at 30 September 2010
- 4.6 per cent were in full time training at 30 September 2010
- 7.4 per cent were in either full time or part time employment at 30 September 2010
- 17.5 per cent were unemployed at 30 September 2010



## LIST OF TABLES

<b>Table 1</b>	Key Stage 1 eligibility and performance of children who have been looked after continuously for at least six months, by gender, 2007 to 2011
<b>Table 2</b>	Key Stage 2 eligibility and performance of children who have been looked after continuously for at least six months, by gender, 2007 to 2011
<b>Table 3</b>	Key Stage 4 eligibility and performance of children who have been looked after continuously for at least six months, by gender, 2007 to 2011
<b>Table 4</b>	Comparison between cohorts used to show attainment for looked after children
<b>Table 5</b>	Offending by children who had been looked after continuously for at least twelve months, by age and gender
<b>Table 6</b>	Substance misuse by children who had been looked after continuously for at least twelve months, by age and gender
<b>Table 7</b>	Health care of children who had been looked after continuously for at least twelve months
<b>Table 8</b>	Development assessments of children aged 5 or under who had been looked after continuously for at least twelve months
<b>Table 9</b>	Education and employment status at 30 September 2010 of children who had been looked after continuously for at least twelve months, following completion of National Curriculum Year 11 during the 2009/10 school year
<b>Table 10</b>	Emotional and behavioural health of looked after children - Average score for children looked after at 31 March for whom a Strengths and Difficulties Questionnaire (SDQ) Health care of children who had been looked after continuously for at least twelve months

### Local Authority Tables

<b>Table LA1</b>	Eligibility and performance of children who have been looked after continuously for at least twelve months at Key Stage 1, 2011
<b>Table LA2</b>	Eligibility and performance of children who have been looked after continuously for at least twelve months at Key Stage 2, 2011
<b>Table LA3</b>	Eligibility and performance of children who have been looked after continuously for at least twelve months at Key Stage 4, 2011
<b>Table LA4</b>	Offending by children who had been looked after continuously for at least twelve months
<b>Table LA5</b>	Substance misuse by children who had been looked after continuously for at least twelve months
<b>Table LA6</b>	Health care of children who have been looked after continuously for at least twelve months
<b>Table LA7</b>	Development assessments of children aged 5 or under who had been looked after continuously for at least twelve months
<b>Table LA8</b>	Education and employment status at 30 September 2010 of children who had been looked after continuously for at least twelve months, following completion of National Curriculum Year 11 during the 2009/10 school year
<b>Table LA9</b>	Emotional and behavioural health of looked after children - Average score for children looked after at 31 March for whom a Strengths and Difficulties Questionnaire (SDQ)

### Additional Information

Further information on outcomes for children looked after continuously for 12 months at 31 March will be released in early 2012 as additional tables to this publication.

## TECHNICAL NOTES

### 1. Data source

The data source for the attainment of looked after children is produced by matching information from the Children Looked After (CLA) database, which is collected annually from Local Authorities via the SSDA903 return, with information within the National Pupil database (NPD). Information in the CLA database is collected at individual level and since 2005-06 includes the Unique Pupil Number (UPN) field. This data is collected annually between April and June for the previous financial year. Once the data has been collected and checked, an extract is produced which is sent to our matching contractors for linking to the NPD. The UPN is the main field used for matching purposes but other information about the child is also used such as date of birth, gender, ethnicity and responsible Local Authority. Once the data has been matched into the NPD, extracts can be produced according to individual specification – the NPD contains attainment information for all Key Stages as well as information from the School Census and extracts can be produced based on all of the information within the NPD.

### 2. UPN return rates

A valid UPN should be returned for all pupils aged 6 or over at the start of the school year. There are several reasons why a child may have no UPN. These are:

- Child looked after is aged under 6 years old and is not yet assigned a UPN.
- Child looked after has never attended a maintained school in England (e.g. some Unaccompanied Asylum Seeking Children).
- Child looked after is educated outside England.
- Child is newly looked after (from one week before end of collection period) and the UPN was not yet known at the time of the SSDA903 annual statistical return.
- Sources collating UPNs reflect discrepancy/ies for the child's name and/or surname and/or date of birth therefore preventing reliable matching (e.g., duplicated UPN).

For children of school age, 98.3 per cent of children looked after continuously for 12 months in the last 12 months at 31 March 2011 had a valid UPN. The percentage of children looked after continuously for 12 months with a valid UPN for each Key Stage is:

	Children of compulsory school age at 31 August	Children eligible for Key Stage 1 teacher assessment	Children eligible for Key Stage 2 tests	Children eligible for Key Stage 4 tests
2011	98.3%	97.3%	99.7%	97.6%
2010	98.2%	98.6%	99.8%	97.8%
2009	98.6%	99.6%	99.7%	98.4%
2008	98.1%	99.1%	99.6%	97.8%
2007	97.3%	98.9%	99.6%	95.7%

The overall number of UPNs received for the current year (2011) is higher than that submitted in 2010. In the 2010 SSDA903 return, 96.9 per cent of children eligible for Key Stage 4 who were looked after continuously for 12 months at 31 March submitted a valid UPN. In 2011, the percentage of these children with a valid UPN in 2010 has increased to 97.8. The CLA database is a longitudinal dataset and local authorities can amend UPNs for earlier years. The matching process is re-run for historical data each year to ensure that as many records as possible are updated and matched.

There is variation between local authorities in the number of UPNs provided in 2011, at Key Stage 4 there has been a decrease in the number of authorities providing less than 90 per cent of UPNs:

Number of local authorities with less than 90 per cent of children looked after continuously for 12 months with a valid UPN			
Children of compulsory school age as at 31 August	Children eligible for Key Stage 1 teacher assessment	Children eligible for Key Stage 2 tests	Children eligible for Key Stage 4 tests
2	9	1	8

The main reason given for a missing UPN for these children since 2008 is the child never having attended a maintained school.

Figures have been presented here for the 12 month cohort to enable a comparison with those presented in previous publications. Figures for 2011 have also been calculated based on the 6 month cohort and these show that the volumes of UPNs received are the same for KS1 and very slightly lower for the other key stages based on new cohort, as follows:

	UPN volume based on 12 month cohort	UPN volume based on 6 month cohort
KS1	97.3%	97.3%
KS2	99.7%	99.5%
KS4	97.6%	96.7%

### 3. Data Quality

The number of children looked after continuously for 12 months, for whom a UPN is supplied; who are successfully matched to attainment data through the NPD has improved in 2011 for Key Stage 4 pupils. In 2011, 93.5 per cent of these children were successfully matched to their attainment data via the NPD compared to 92.5 per cent in 2010. The matching rates for all Key Stages since 2007 are:

	Percentage of UPNs successfully matched to Key Stage 1 attainment	Percentage of UPNs successfully matched to Key Stage 2 attainment	Percentage of UPNs successfully matched to Key Stage 4 attainment
2011	94.3%	93.2%	93.5%
2010	93.9%	94.6%	93.0%
2009	94.0%	93.3%	86.4%
2008	93.7%	92.1%	86.7%
2007	91.0%	93.0%	83.3%

The improvement in matching for children eligible for Key Stage 4 has also been seen for other key stages and indicates that the accuracy of UPNs supplied by local authorities is improving for these pupils. (Note that the methodology for calculating these matching rates has been amended in 2011- previously all children within the relevant NPD extract were include as a successful match, we have now only included those of the correct age which ensures the numerator and denominator of these matching rates now have a consistent definition).

The NPD also matches children to School Census data as returned in the spring Census. The spring Census is a snapshot of the situation in schools as at the third Thursday in January. Pupil level information has been returned via the Census for nursery, primary, secondary and special schools for all years since 2006. The Alternative Provision Census was introduced in January 2008. This is intended to collect information for all children of school age attending a school not maintained by an authority for whom the LA is paying full tuition fees, and learners educated otherwise than in schools and pupil referral units (PRUs), under arrangements made by the LA. The Pupil Referral Unit Census was introduced in 2010. Both of these censuses also returns a snapshot of the situation in PRUs as at the third Thursday in January.

If a child is not on the roll of a school on the date of the Census they will not appear in the Census and hence their details are not returned to the Department. For those children who do not match to the Census, it is possible that they do not appear on the roll of a school at the key date in January.

#### 4. Attainment data

The attainment data contained within the NPD is collected directly from awarding bodies. As this is the same source of information used for other Departmental publications, including the Performance Tables, this data source ensures we have consistent definitions with figures published for all children. For example, at Key Stage 4 we can ensure that all GCSE equivalent qualifications are included. The previous OC2 collection included only GCSEs and GNVQs.

#### 5. Special Educational Needs

The information on special education needs contained with the NPD is sourced from the School Census. These returns are made to the Department in January of each year. Arrangements for identifying and providing for children with SEN are set out in Part IV of the 1996 Act (and, prior to this, the 1981 and 1993 Education Acts). New rights and duties were introduced by the SEN and Disability Act 2001 (SENDA). A Code of Practice, issued in 1994, supported the rights and duties in the 1996 Act. A new SEN Code of Practice was introduced in January 2002. All LAs, maintained schools and early years settings in receipt of government funding must have regard to it. The Code of Practice specified three stages of provision: School/Early Years Action, School/Early Years Action Plus and Statements of SEN.

#### 6. Absence information

In 2006 the School Census started to collect pupil level absence data on a termly basis (spring, summer and autumn collections) from maintained secondary schools, city technology colleges and academies relating to absence during the 2005/06 school year. For the 2006/07 school year the scope of collection was extended to also include maintained primary schools and special schools. This is the first year for which we can provide full information on the absence of children looked after continuously for 12 months. Absence data is returned in arrears, therefore the latest available information for primary, secondary and special schools covers the 2009/10 school year and includes UPNs submitted in 2010 only. Information for the 2010/11 school year will be published in the 2012 publication.

#### 7. Exclusions information

Information on exclusions is also derived from School Census returns. Information on exclusions is collected two terms in arrears; for example, information on exclusions which occurred during the summer term 2010 was collected during the spring term 2011. Information on exclusions is therefore available at a later date than attainment information. This publication includes information for children looked after continuously for 6 months in the last 12 months at 2010, taken from the 2010 CLA database matched to exclusions information held on the NPD. Information for the 2010/11 school year will be published in the 2012 publication.

## 8. Definitions used for production of figures

In producing the figures presented in this publication, a range of sources, variables and definitions are used. In particular there are two different definitions used to identify different cohorts of looked after children.

**12 month cohort** This cohort has been used previously to monitor the attainment of looked after children and is defined by those who have been looked after continuously for 12 months at 31 March each year, excluding those children looked after under respite care. The 'Total number of looked after children' figures for this cohort are derived from the CLA database formed from the SSDA903 data submitted by Local Authorities and ensures the denominator reflects the full population of looked after children. The figures for the 'attainment achieved' are derived from extracts of the National Pupil Database for the relevant Key Stage and year.

**6 month cohort** This cohort has been introduced to this publication this year as it is used to measure the attainment gaps impact indicator within the Department's Business Plan. This cohort is defined as those children who have been looked after continuously for 6 months during the year, excluding those looked after under respite care. The 'Total number of looked after children' figures and the 'attainment achieved' figures for this cohort are both based on the matched Children Looked After-National Pupil Database dataset where we have matched the looked after children information to the attainment information for the relevant Key Stage and year. This means that the denominator here differs as it only includes those children from the SSDA903 return submitted by Local Authorities whom we have managed to match to the attainment data, this change was necessary in order to calculate a consistent comparison with 'The Rest'.

The definition used for this cohort is based on the children who would be eligible for the pupil premium payment which was introduced in the 2011-12 financial year. Further information including the conditions of grant and the allocations for each Local Authority can be found on the Department's website via the link below:

<http://www.education.gov.uk/schools/adminandfinance/financialmanagement/schoolsrevenuefunding/segment2012pupilpremium/a0075963/pupil-premium-2011-12>

## 9. Key stage 2 coverage in 2010

In 2010 not all schools participated in Key Stage 2 tests. The figures reported in this release for National Curriculum tests are based upon those papers that were returned by schools for marking to the QCDA's contracted external marking agency. These results cover 73 per cent of the papers expected to be externally marked for pupils in maintained schools, reflecting 4,005 maintained schools that were expected to participate in the Key Stage 2 tests but did not. This represents approximately 26 per cent of the 15,518 maintained schools who were expected to administer the tests. Please note that caution needs to be exercised in over-interpreting small changes of 1 per cent or less in changes between years and between groups.

## 10. Rounding Conventions

Figures have been rounded to the nearest 10, apart from the numbers of children relating to each Local Authority which have been rounded to the nearest 5. Numbers from one to five inclusive for confidentiality purposes have been replaced in the published tables by a cross (x). Where any number is shown as zero (0), the original figure submitted was zero (0). The following convention has been used:

'.' means not applicable

'-' means negligible – used to represent a percentage below 0.5%

Percentages have been rounded to whole numbers for Key Stage 1 and Key Stage 2 national tables and rounded to one decimal place for Key Stage 4 Local Authority tables, but where the numerator was five or less or the denominator was 10 or less, they have been suppressed and replaced by a cross (x). Note that percentages may not sum to 100 due to rounding.

It has been necessary to suppress other figures whenever it would be possible to calculate the value of a suppressed number by means of simple arithmetic. The rule applied in these circumstances has been to suppress the next smallest data item provided its value is strictly less than 20.

#### 11. Local Authority Reorganisation

Bedford Borough, Central Bedfordshire, Cheshire East and Cheshire West and Chester were formed in the reorganisation of Bedfordshire and Cheshire on 1 April 2009. These local authorities supplied the Department with information indicating which local authority had taken over responsibility regarding children looked after at 31 March 2009 and children now aged 19 years who were looked after on 1 April 2008 then aged 16 years.

#### 12. Impact Indicators and Attainment Gaps

The Impact Indicator for Key Stage 2 is the attainment gap between those children who have been looked after for 6 months continuously in the last 12 months and the rest of the children who have not been looked after according to this definition. The attainment being measured is those achieving level 2 in both English and mathematics.

The Impact Indicator for Key Stage 4 is the attainment gap between those children who have been looked after for 6 months continuously in the last 12 months and the rest of the children who have not been looked after according to this definition. The attainment being measured is those achieving grade A\* to C in GCSE or equivalent English and mathematics.

All attainment gaps are calculated by taking the difference between the percentages rounded to whole numbers for both looked after children and the rest.

#### 13. Progress measures

Information on measures of progress has been included in this year's publication for the first time. Figures are included for the percentage of children making 2 levels of progress in English and mathematics at Key Stage 2 and Key Stage 4. Definitions used to calculate this information follow those used in the main Key Stage attainment Statistical First Releases and in the Performance Tables.

A full explanation of how expected progress is calculated for Key Stage 2 is included in the SFR: "Interim Percentage of Pupils Making Expected Progress in English and in Mathematics between Key Stage 1 and Key Stage 2 in England, 2010/11"

<http://www.education.gov.uk/rsgateway/DB/SFR/s001023/index.shtml>

and for Key Stage 4 in the following SFR:

"Percentage of Pupils Making Expected Progress in English and Mathematics between Key Stage 2 and Key Stage 4 in England: 2007/08 – 2009/10"

<http://www.education.gov.uk/researchandstatistics/statistics/allstatistics/a00196799/key-stage-2-to-4-progression-measures>

## **A National Statistics publication**

The United Kingdom Statistics Authority has designated these statistics as National Statistics, in accordance with the Statistics and Registration Service Act 2007 and signifying compliance with the Code of Practice for Official Statistics. Designation can be broadly interpreted to mean that the statistics:

- meet identified user needs;
- are well explained and readily accessible;
- are produced according to sound methods, and
- are managed impartially and objectively in the public interest.

Once statistics have been designated as National Statistics it is a statutory requirement that The Code of Practice shall continue to be observed. This publication has been designated as National Statistics following assessment by the United Kingdom Statistics Authority.

## **Revisions**

This publication is produced using a final version of the 2011 dataset and we do not plan to make any revisions to this publication. If we later discover that a revision is necessary, this will be made in accordance with our revisions policy which is published at <http://www.education.gov.uk/rsgateway/nat-stats.shtml>.

## **Confidentiality**

The National Statistics Code of Practice requires that reasonable steps should be taken to ensure that all published or disseminated statistics produced by the Department for Education protect confidentiality. An 'x' indicates that a figure has been suppressed due to small numbers. Values of one to five inclusive are suppressed. Also suppressed are rates based on fewer than five pupils who achieved (or did not achieve) a particular level, or based on a denominator of 10 or less. Some additional figures have also been suppressed to prevent the possibility of a suppressed figure being revealed. This suppression is consistent with the Departmental statistical policy which can be found at <http://www.education.gov.uk/rsgateway/nat-stats.shtml>.

## **Underlying data**

As part of a Government drive for data transparency in official publications, supporting data for this SFR will also be published in an open standardised format, in early 2012 along with the additional tables for this publication.

## **Looked after children data user group:**

This is a group which aims to seek feedback on whether these statistics are meeting users' requirements and to consult on any future changes to this data collection and the timing and format of our outputs. If you would like to participate in this group then please register your interest via email.

## **Related publications**

General information on looked after children can be found in the Statistical First Release: Children Looked After by Local Authorities in England (including adoption and care leavers) - year ending 31 March 2011.

<http://www.education.gov.uk/researchandstatistics/statistics/statistics-by-topic/childrenandfamilies/lookedafterchildren/a00196857/children-looked-after-by-las-in-england>

## References

National Curriculum Assessments at Key Stage 1 in England, 2011

<http://www.education.gov.uk/researchandstatistics/statistics/statistics-by-topic/performance/a00196859/national-curriculum-assessments-ks1-england-2011>

Interim Results for Key Stage 2 and 3 National Curriculum Assessments in England, 2010/11

<http://www.education.gov.uk/researchandstatistics/statistics/statistics-by-topic/performance/ks2and3/a00196847/interimresults>

Secondary School (Key Stage 4) Performance Tables in England 2009/10 (formerly Achievement and Attainment Tables)

[http://www.education.gov.uk/researchandstatistics/statistics/statistics-by-topic/performance/KS4/a00196677/dfe-secondary-school-\(key-stage-4\)-performance-tab](http://www.education.gov.uk/researchandstatistics/statistics/statistics-by-topic/performance/KS4/a00196677/dfe-secondary-school-(key-stage-4)-performance-tab)

Schools, Pupils and their Characteristics, January 2011

<http://www.education.gov.uk/researchandstatistics/statistics/statistics-by-topic/schoolpupilcharacteristics/a00196810/schools-pupils-and-their-characteristics-january-2>

Pupil Absence in schools in England: Autumn Term 2010 and Spring Term 2011

<http://www.education.gov.uk/researchandstatistics/statistics/statistics-by-topic/schoolpupilcharacteristics/absence/a00198384/dfe-pupil-absence-in-schools-in-england-autumn-term-2010-and-spring-term-2011>

Permanent and Fixed Period Exclusions from Schools in England 2009/10

<http://www.education.gov.uk/researchandstatistics/statistics/statistics-by-topic/schoolpupilcharacteristics/exclusion/a00196834/permanent-and-fixed-period-exclusions-from-schools>

## ENQUIRIES

Enquiries about the figures contained in this press release should be addressed to:

Data Services Group  
Department for Education  
Sanctuary Buildings  
Great Smith Street  
LONDON  
SW1P 3BT

Email: [cla.stats@education.gsi.gov.uk](mailto:cla.stats@education.gsi.gov.uk)

Press enquiries should be made to the Department's Press Office at:

Press Office  
Department for Education  
Sanctuary Buildings  
Great Smith Street  
LONDON  
SW1P 3BT

Telephone Number: 020 7925 6789



**Table 1: Key Stage 1 eligibility and performance of children who have been looked after continuously for at least six months<sup>1</sup>, by gender**  
**Years: 2007- 2011**  
**Coverage: England**

	Boys					Girls					Total				
	2007	2008	2009	2010	2011	2007	2008	2009	2010	2011	2007	2008	2009	2010	2011
<b>Looked after children</b>															
Number eligible to sit Key Stage 1 tasks and tests	1,040	1,030	1,010	1,080	1,160	930	1,000	860	900	1,070	1,970	2,030	1,870	1,970	2,230
Percentage achieving level 2 <sup>2</sup> or above in:															
Reading	56	55	57	58	61	67	67	70	70	70	61	61	63	63	65
Writing	49	46	48	49	50	63	62	64	64	65	55	54	55	56	57
Mathematics	67	66	67	65	69	74	70	74	71	73	70	68	70	68	71
<b>Non-Looked After children - 'The Rest'</b>															
Number eligible to sit Key Stage 1 tasks and tests	279,140	274,180	272,820	282,930	291,090	266,400	261,550	259,220	268,830	277,380	545,550	535,720	532,040	551,760	568,470
Percentage achieving level 2 <sup>2</sup> or above in:															
Reading	80	80	81	81	82	88	88	89	89	89	84	84	84	85	85
Writing	75	75	75	76	76	86	86	87	87	87	80	80	81	81	81
Mathematics	89	88	88	88	88	91	91	91	91	91	90	90	90	89	90
<b>Attainment gaps<sup>3</sup></b>															
Reading	24	25	24	23	21	21	21	19	19	19	23	23	21	22	20
Writing	26	29	27	27	26	23	24	23	23	22	25	26	26	25	24
Mathematics	22	22	21	23	19	17	21	17	20	18	20	22	20	21	19

Source: CLA-NPD matched data

1. Children looked after continuously for at least six months during the year excluding children in respite care.
2. Expected level for age group. Figures at Key Stage 1 are based on teacher assessments.
3. Attainment gaps are calculated as the difference between the percentage for Looked After Children and the percentage for 'the rest' based on rounded percentages.

Figures have been rounded to the nearest 10.

See Technical Note 10 for more information on rounding conventions.

**Table 2: Key Stage 2 eligibility and performance of children who have been looked after continuously for at least six months<sup>1</sup>, by gender**  
**Years: 2007 - 2011**  
**Coverage: England**

	Boys					Girls					Total				
	2007	2008	2009	2010 <sup>2</sup>	2011	2007	2008	2009	2010 <sup>2</sup>	2011	2007	2008	2009	2010 <sup>2</sup>	2011
<b>Looked after children</b>															
Number eligible to sit Key Stage 2 tests	1,610	1,580	1,480	1,120	1,470	1,280	1,280	1,200	880	1,170	2,880	2,850	2,690	1,990	2,640
Percentage achieving:															
Level 4+ English <sup>3</sup>	43	43	42	44	49	57	60	56	59	59	49	51	48	51	53
Level 4+ mathematics <sup>3</sup>	46	47	48	50	53	46	49	47	51	51	46	48	48	50	52
Level 4+ English & mathematics <sup>3</sup>	35	35	35	38	41	40	44	41	44	45	37	39	38	41	43
2 levels of progress in English <sup>4</sup>	.	.	.	.	72	.	.	.	.	76	.	.	.	.	74
2 levels of progress in mathematics <sup>4</sup>	.	.	.	.	68	.	.	.	.	65	.	.	.	.	66
<b>Non-Looked After children - 'The Rest'</b>															
Number eligible to sit Key Stage 2 tests	297,720	301,630	293,460	211,170	281,970	284,990	290,490	281,610	203,280	270,450	582,710	592,120	575,070	414,450	552,430
Percentage achieving:															
Level 4+ English <sup>3</sup>	76	77	76	76	77	85	86	86	86	86	81	82	81	81	81
Level 4+ mathematics <sup>3</sup>	79	80	80	81	80	76	79	79	81	80	78	79	79	81	80
Level 4+ English & mathematics <sup>3</sup>	70	71	70	72	72	73	76	75	77	77	72	73	73	74	74
2 levels of progress in English <sup>4</sup>	.	.	.	.	81	.	.	.	.	86	.	.	.	.	83
2 levels of progress in mathematics <sup>4</sup>	.	.	.	.	83	.	.	.	.	82	.	.	.	.	82
<b>Attainment gaps<sup>5</sup></b>															
Level 4+ English <sup>3</sup>	33	34	34	32	28	28	26	30	27	27	32	31	33	30	28
Level 4+ mathematics <sup>3</sup>	33	33	32	31	27	30	30	32	30	29	32	31	31	31	28
Level 4+ English & mathematics <sup>3</sup>	35	36	35	34	31	33	32	34	33	32	35	34	35	33	31
2 levels of progress in English <sup>4</sup>	.	.	.	.	9	.	.	.	.	10	.	.	.	.	9
2 levels of progress in mathematics <sup>4</sup>	.	.	.	.	15	.	.	.	.	17	.	.	.	.	16

Source: CLA-NPD matched data

- Children looked after continuously for at least six months during the year excluding children in respite care.
- Pupils in schools which did not participate in Key Stage 2 tests in 2010 have been removed from the calculations.
- Expected level for age group. Figures at Key Stage 2 are based on test results.
- A full explanation of how expected progress is calculated is included in the SFR: <http://www.education.gov.uk/rsgateway/DB/SFR/s001023/index.shtml>
- Attainment gaps are calculated as the difference between the percentage for Looked After Children and the percentage for 'the rest' based on rounded percentages.

Figures have been rounded to the nearest 10.

See Technical Note 10 for more information on rounding conventions.

. = not applicable

**Table 3: Key Stage 4 eligibility and performance of children who have been looked after continuously<sup>1</sup>, by gender**

Years: 2007 - 2011

Coverage: England

	Boys					Girls					Total				
	2007	2008	2009	2010	2011	2007	2008	2009	2010	2011	2007	2008	2009	2010	2011
<b>Looked after children</b>															
Number eligible to sit GCSEs <sup>2</sup>	2,630	2,760	2,830	3,220	3,150	2,280	2,360	2,360	2,530	2,520	4,910	5,110	5,190	5,750	5,680
Percentage achieving:															
A*-C in English & mathematics	7.6	8.5	9.2	10.7	11.3	11.6	12.4	13.1	15.2	17.1	9.5	10.3	11.0	12.7	13.9
5+ A*-C GCSEs inc. English & mathematics	6.9	7.9	8.7	10.2	10.6	10.8	11.5	12.4	14.3	16.4	8.7	9.6	10.4	12.0	13.2
5+ A*-C	14.3	15.4	19.6	23.6	26.4	19.1	22.0	26.0	30.7	37.9	16.5	18.4	22.5	26.7	31.5
Expected progress in English <sup>3</sup>	.	.	.	.	24.7	.	.	.	.	39.3	.	.	.	.	31.5
Expected progress in mathematics <sup>3</sup>	.	.	.	.	22.7	.	.	.	.	26.3	.	.	.	.	24.4
<b>Non-Looked After children - 'The Rest'</b>															
Number eligible to sit GCSEs <sup>2</sup>	341,340	342,210	329,790	330,960	324,720	327,330	326,350	314,630	314,620	308,540	668,670	668,550	644,420	645,580	633,260
Percentage achieving:															
A*-C in English & mathematics	42.4	43.1	45.6	49.4	55.0	51.2	51.9	53.8	57.7	62.4	46.7	47.4	49.6	53.5	58.6
5+ A*-C GCSEs inc. English & mathematics	41.2	42.3	45.0	48.8	54.1	50.2	51.2	53.2	57.2	61.8	45.6	46.7	49.0	52.9	57.9
5+ A*-C	56.1	59.8	64.9	70.7	74.3	65.1	68.6	73.3	78.7	82.1	60.5	64.1	69.0	74.6	78.1
Expected progress in English <sup>3</sup>	.	.	.	.	64.6	.	.	.	.	75.7	.	.	.	.	70.0
Expected progress in mathematics <sup>3</sup>	.	.	.	.	61.2	.	.	.	.	65.5	.	.	.	.	63.3
<b>Attainment gaps<sup>4</sup></b>															
A*-C in English & mathematics	34.8	34.6	36.4	38.7	43.7	39.6	39.5	40.7	42.5	45.3	37.2	37.1	38.6	40.8	44.7
5+ A*-C GCSEs inc. English & mathematics	34.3	34.4	36.3	38.6	43.5	39.4	39.7	40.8	42.9	45.4	36.9	37.1	38.6	40.9	44.7
5+ A*-C	41.8	44.4	45.3	47.1	47.9	46.0	46.6	47.3	48.0	44.2	44.0	45.7	46.5	47.9	46.6
Expected progress in English <sup>3</sup>	.	.	.	.	39.9	.	.	.	.	36.4	.	.	.	.	38.5
Expected progress in mathematics <sup>3</sup>	.	.	.	.	38.5	.	.	.	.	39.2	.	.	.	.	38.9

Source: CLA-NPD matched data

1. Children looked after continuously for at least six months during the year excluding children in respite care.

2. Includes equivalent qualifications.

3. A full explanation of how expected progress is calculated is included in the SFR: <http://www.education.gov.uk/researchandstatistics/statistics/allstatistics/a00196799/key-stage-2-to-4-progression-measures>

4. Attainment gaps are calculated as the difference between the percentage for Looked After Children and the percentage for 'the rest' based on rounded percentages.

Figures have been rounded to the nearest 10.

See Technical Note 10 for more information on rounding conventions.

. = not applicable

**Table 4: Comparison between cohorts used to show attainment for looked after children**  
**Years: 2007 - 2011**  
**Coverage: England**

	Children looked after continuously for at least 6 months <sup>1</sup>					Children looked after continuously for at least 12 months <sup>2</sup>				
	2007	2008	2009	2010 <sup>3</sup>	2011	2007	2008	2009	2010 <sup>3</sup>	2011
<b>Key Stage 1<sup>4</sup></b>										
<b>Looked after children</b>										
Number eligible to sit Key Stage 1 tasks & tests	1,970	2,030	1,870	1,970	2,230	1,450	1,520	1,370	1,400	1,580
Percentage achieving Level 2+ in:										
Reading	61	61	63	63	65	55	57	58	59	59
Writing	55	54	55	56	57	49	49	50	52	52
Mathematics	70	68	70	68	71	62	62	64	63	63
<b>Key Stage 2<sup>5</sup></b>										
<b>Looked after children</b>										
Number eligible to sit Key Stage 2 tests	2,880	2,850	2,690	1,990	2,640	2,550	2,560	2,370	1,780	2,240
Percentage achieving Level 4+ in English & mathematics	37	39	38	41	43	34	35	35	37	40
<b>Key Stage 4<sup>6</sup></b>										
<b>Looked after children</b>										
Number eligible to sit GCSEs	4,910	5,110	5,190	5,750	5,680	4,940	4,960	4,960	5,100	5,040
Percentage achieving 5+ GCSEs inc. A*-C in English & mathematics	8.7	9.6	10.4	12.0	13.2	7.2	8.8	9.7	11.7	12.8
Percentage achieving A*-C in English & mathematics	9.5	10.3	11.0	12.7	13.9	7.8	9.5	10.1	12.3	13.4

Source: CLA-NPD matched data

1. Children looked after continuously for 6 months during the year excluding children in respite care.
2. Children looked after for 12 months at 31st March excluding children in respite care.
3. Figures for KS2 in 2010 were affected by the KS2 test boycott and are therefore lower than in other years.
4. Figures for KS1 are based on teacher assessment. Level 2 is the expected level for the age group.
5. Figures for KS2 are based on tests. Level 4 is the expected level for the age group.
6. Figures for KS4 include GCSEs and other equivalent qualifications approved for use pre 16.

Figures have been rounded to the nearest 10. Percentages for KS1 and KS2 have been rounded to the nearest whole number and for KS4 have been rounded to 1 decimal place. See Technical Note 10 for more information on rounding conventions.

**Table 5: Offending by children who had been looked after continuously for at least twelve months<sup>1</sup>, by age<sup>3</sup> and gender**

**Year: 2011**

**Coverage: England**

	Children looked after									Percentage of all children aged 10 to 17 convicted or subject to a final warning or reprimand during the year <sup>2</sup>		
	Number of children aged 10-17 at 31 March			Number convicted or subject to a final warning or reprimand during the year			Percentage convicted or subject to a final warning or reprimand during the year					
	Boys	Girls	Total	Boys	Girls	Total	Boys	Girls	Total	Boys	Girls	Total
Children looked after of age <sup>3</sup>												
10 to 12	4,290	3,250	7,540	60	20	80	1.5	0.5	1.0	.	.	.
13 to 15	6,640	4,830	11,480	580	260	840	8.7	5.4	7.3	.	.	.
16 to 17	6,580	4,630	11,220	910	380	1,290	13.9	8.2	11.5	.	.	.
Total	17,510	12,720	30,230	1,550	660	2,210	8.9	5.2	7.3	3.7	1.1	2.4

Source: SSDA903

1. Children looked after continuously for at least twelve months as at 31 March excluding those children in respite care.

2. Comparison data for all children supplied by Ministry of Justice. Data refers to children aged between 10 and 17 at mid 2010.

3. Age at 31 March 2011.

Figures have been rounded to the nearest 10.

x = number less than or equal to 5 or percentage where the numerator is less than or equal to 5 or the denominator is less than or equal to 10.

. = not applicable

See Technical Note 10 for more information on rounding conventions.

**Table 6: Substance misuse by children who had been looked after continuously for at least twelve months<sup>1</sup>, by age<sup>2</sup> and gender**

**Year: 2011**

**Coverage: England**

	Number of children looked after at 31 March who had been looked after for at least twelve months			Number identified as having a substance misuse problem during the year			Number who received an intervention for their substance misuse problem during the year			Number who were offered an intervention but who refused it during the year		
	Boys	Girls	Total	Boys	Girls	Total	Boys	Girls	Total	Boys	Girls	Total
Children looked after by age <sup>2</sup>												
9 years and under	8,610	7,240	15,850	10	x	20	10	0	10	x	x	10
10 to 12 years	4,290	3,250	7,540	20	10	30	20	x	20	x	x	x
13 to 15 years	6,640	4,830	11,480	350	240	580	200	140	340	110	70	190
16 to 17 years	6,580	4,630	11,220	820	510	1,340	450	290	750	310	180	490
18 years and over	10	x	10	0	0	0	0	0	0	0	0	0
<b>Total</b>	<b>26,130</b>	<b>19,960</b>	<b>46,090</b>	<b>1,200</b>	<b>760</b>	<b>1,960</b>	<b>670</b>	<b>440</b>	<b>1,110</b>	<b>430</b>	<b>260</b>	<b>690</b>

	Percentages			Percentage identified as having a substance misuse problem during the year			Percentage who received an intervention for their substance misuse problem during the year			Percentage who were offered an intervention but who refused it during the year		
	Boys	Girls	Total	Boys	Girls	Total	Boys	Girls	Total	Boys	Girls	Total
Children looked after of age <sup>2</sup>												
9 and under	54.3	45.7	100	0.1	x	0.1	x	x	40	x	x	40
10 to 12	56.9	43.1	100	0.5	0.2	0.4	71.4	x	60.7	x	x	x
13 to 15	57.9	42.1	100	5.2	4.9	5.1	57.8	60.9	59	32.5	31.1	31.9
16 to 17	58.7	41.3	100	12.5	11.1	11.9	54.7	57.3	55.7	38	34.3	36.6
18 and over	72.7	x	100	0	0	0	.	.	.	.	.	.
<b>Total</b>	<b>56.7</b>	<b>43.3</b>	<b>100</b>	<b>4.6</b>	<b>3.8</b>	<b>4.3</b>	<b>55.9</b>	<b>57.8</b>	<b>56.6</b>	<b>35.8</b>	<b>33.6</b>	<b>34.9</b>

Source: SSDA903

1. Children looked after continuously for at least twelve months as at 31 March 2011 excluding those children in respite care.

2. Age at 31 March 2011.

Figures have been rounded to the nearest 10.

x = number less than or equal to 5 or percentage where the numerator is less than or equal to 5 or the denominator is less than or equal to 10.

See Technical Note 10 for more information on rounding and suppression.

**Table 7: Health care of children who had been looked after continuously for at least twelve months<sup>1</sup>**

**Year: 2011**

**Coverage: England**

	Number of children looked after at 31 March who had been looked after for at least twelve months			of these:								
				number whose immunisations were up to date			number who had their teeth checked by a dentist			number who had their annual health assessment		
	Boys	Girls	Total	Boys	Girls	Total	Boys	Girls	Total	Boys	Girls	Total
Children looked after by age <sup>2</sup> :												
4 years and under	4,000	3,420	7,420	3,350	2,850	6,200	3,350	2,840	6,190	3,240	2,740	5,980
5 to 9 years	4,610	3,820	8,430	3,890	3,210	7,100	3,970	3,320	7,290	4,170	3,470	7,640
10 to 15 years	10,930	8,080	19,010	8,780	6,460	15,240	9,290	6,970	16,250	9,570	7,080	16,660
16 years and over	6,590	4,640	11,230	4,650	3,220	7,870	4,820	3,430	8,250	4,980	3,590	8,570
<b>Total</b>	<b>26,130</b>	<b>19,960</b>	<b>46,090</b>	<b>20,670</b>	<b>15,740</b>	<b>36,410</b>	<b>21,430</b>	<b>16,550</b>	<b>37,970</b>	<b>21,950</b>	<b>16,880</b>	<b>38,840</b>

	Percentages			Percentage whose immunisations were up to date			Percentage who had their teeth checked by a dentist			Percentage who had their annual health assessment		
	Boys	Girls	Total	Boys	Girls	Total	Boys	Girls	Total	Boys	Girls	Total
of age <sup>2</sup> :												
4 and under	53.9	46.1	100	83.7	83.4	83.6	83.7	82.9	83.4	80.9	80.2	80.6
5 to 9	54.7	45.3	100	84.4	84.0	84.2	86.1	86.9	86.5	90.4	90.8	90.6
10 to 15	57.5	42.5	100	80.3	79.8	80.1	84.9	86.2	85.5	87.6	87.6	87.6
16 and over	58.7	41.3	100	70.5	69.5	70.1	73.2	73.9	73.5	75.5	77.5	76.3
<b>Total</b>	<b>56.7</b>	<b>43.3</b>	<b>100</b>	<b>79.1</b>	<b>78.8</b>	<b>79.0</b>	<b>82.0</b>	<b>82.9</b>	<b>82.4</b>	<b>84.0</b>	<b>84.6</b>	<b>84.3</b>

Source: SSDA903

1. Children looked after continuously for at least twelve months as at 31 March 2011 excluding those children in respite care.

2. Age at 31 March 2011.

Figures have been rounded to the nearest 10.

See Technical Note 10 for more information on rounding conventions.

**Table 8: Development assessments of children aged 5 or under<sup>1</sup> who had been looked after continuously for at least twelve months<sup>2</sup>**

**Year: 2011**

**Coverage: England**

	Number of children looked after for at least one year, and aged 5 or younger at 31 March			of these:					
				Number whose development assessments were up to date			Percentage whose development assessments were up to date		
	Boys	Girls	Total	Boys	Girls	Total	Boys	Girls	Total
Children looked after by age <sup>2</sup> :									
1 year and under	1,250	1,120	2,370	990	900	1,890	79.4	80.2	79.8
2 years	1,010	820	1,830	780	620	1,400	77.7	75.4	76.7
3 years	890	760	1,650	680	590	1,270	75.7	77.4	76.5
4 years	850	720	1,570	650	540	1,190	75.8	75.1	75.5
5 years	880	700	1,580	640	500	1,140	72.7	71.8	72.3
<b>Total</b>	<b>4,880</b>	<b>4,120</b>	<b>9,000</b>	<b>3,740</b>	<b>3,150</b>	<b>6,880</b>	<b>76.5</b>	<b>76.4</b>	<b>76.5</b>

*Source: SSDA903*

1. Age at 31 March 2011.

2. Children looked after continuously for at least twelve months as at 31 March 2011 excluding those children in respite care.

Figures have been rounded to the nearest 10.

See Technical Note 10 for more information on rounding conventions.



**Table 9: Education and employment status at 30 September 2010 of children who had been looked after continuously for at least twelve months<sup>1</sup>, following completion of National Curriculum Year 11<sup>2</sup> during the 2009/10 school year**  
**Year: 2010**  
**Coverage: England**

	Number of looked after children <sup>1</sup>			Percentage of looked after children <sup>3</sup>			All children <sup>4</sup>	
	Boys	Girls	Total	Boys	Girls	Total	Number	Percentage
Total number of children in year 11 in 2009/10 school year <sup>2</sup>	3,380	2,370	5,750	.	.	.	604,720	.
Activity of these children at 30 September 2010:								
Full-time education	2,390	1,670	4,060	70.7	70.2	70.5	.	87.4
Full-time training	150	110	260	4.5	4.7	4.6	.	4.6
Full-time employment with planned training	50	40	80	1.3	1.5	1.4	.	1.4
Full-time employment with no planned training	30	10	30	0.8	0.3	0.6	.	0.7
Part-time employment, education, or training	200	120	310	5.8	4.9	5.4	.	.
Unemployed	570	440	1,010	16.9	18.3	17.5	.	3.7
as a result of ill health or disability	40	30	70	1.0	1.3	1.1	.	.
other reason	540	410	940	15.9	17.1	16.4	.	.

Source: SSDA903

1. Number of children looked after continuously for 12 months at 31 March 2011 who were eligible to take GCSE examinations in the school year 2009/10.

2. Year 11 is the National Curriculum year usually followed by pupils aged 15 at the start of the school year. It is the year in which GCSE examinations are usually taken.

3. The number of children for each activity expressed as a percentage of all children looked after continuously for 12 months at 31 March who were in year 11 in the 2009/10 school year.

4. Comparison information for all children is taken from 'The Connexions/Careers Service Annual Activity Survey 2009'. This covers all young people who were in year 11 during the school year ending August 2009, and is based on a survey carried out during O

Figures have been rounded to the nearest 10.

x = number less than or equal to 5 or percentage where the numerator is less than or equal to 5 or the denominator is less than or equal to 10.

See Technical Note 10 for more information on rounding convention

**Table 10: Emotional and behavioural health of looked after children - Average score for children looked after at 31 March for whom a Strengths and Difficulties Questionnaire (SDQ) was received<sup>1,2</sup>**  
**Year: 2011**  
**Coverage: England**

	Number of children looked after at 31 March aged 4 to 16 <sup>2,3</sup>			Number for whom an SDQ score was received			Percentage for whom an SDQ score was received			Average SDQ score <sup>4</sup>		
	Boys	Girls	Total	Boys	Girls	Total	Boys	Girls	Total	Boys	Girls	Total
Children looked after by age <sup>3</sup> :												
4 years	850	720	1,570	370	300	670	43.1	42.0	42.6	12.7	12.0	12.4
5 years	880	700	1,580	570	470	1,030	64.1	67.4	65.5	13.2	11.5	12.5
6 years	830	760	1,590	550	540	1,090	66.7	70.7	68.6	14.0	12.3	13.2
7 years	900	740	1,640	620	500	1,120	69.0	67.3	68.2	14.6	12.9	13.8
8 years	950	770	1,720	660	550	1,210	69.6	71.7	70.5	15.1	12.9	14.1
9 years	1,060	850	1,910	750	620	1,370	71.0	73.0	71.9	15.4	13.0	14.3
10 years	1,240	960	2,200	910	700	1,600	72.8	73.0	72.9	15.1	13.2	14.3
11 years	1,400	1,070	2,470	1,020	780	1,800	72.9	72.9	72.9	15.3	13.5	14.5
12 years	1,640	1,230	2,870	1,210	920	2,130	73.5	75.0	74.2	15.6	13.4	14.6
13 years	1,830	1,410	3,240	1,320	1,040	2,360	72.2	73.8	72.9	15.2	13.1	14.3
14 years	2,260	1,550	3,810	1,620	1,150	2,770	71.9	73.9	72.7	14.8	13.2	14.1
15 years	2,550	1,870	4,420	1,810	1,340	3,160	71.1	71.8	71.4	14.1	13.3	13.8
16 years	3,170	2,200	5,370	2,050	1,500	3,550	64.6	68.3	66.1	13.1	13.6	13.3
<b>Total</b>	<b>19,570</b>	<b>14,820</b>	<b>34,390</b>	<b>13,460</b>	<b>10,410</b>	<b>23,870</b>	<b>68.8</b>	<b>70.2</b>	<b>69.4</b>	<b>14.5</b>	<b>13.1</b>	<b>13.9</b>

Source: SSDA903

1. Children looked after continuously for at least twelve months as at 31 March 2011 excluding those children in respite care.

2. An SDQ score is required for those children aged 4 to 16 who had been looked after continuously for at least twelve months at the 31 March. Further information can be found in the SSDA903 guidance.

3. Age at 31 March 2011.

4. Average scores have been derived from unrounded numerator and denominator values.

Figures have been rounded to the nearest 10.

See Technical Note 10 for more information on rounding conventions.