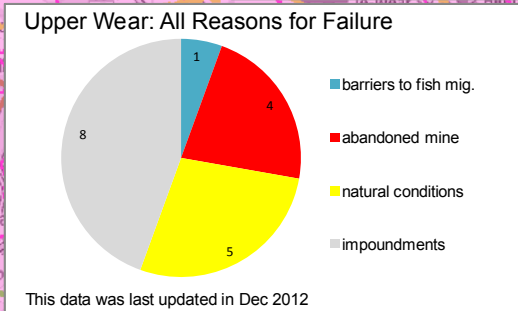
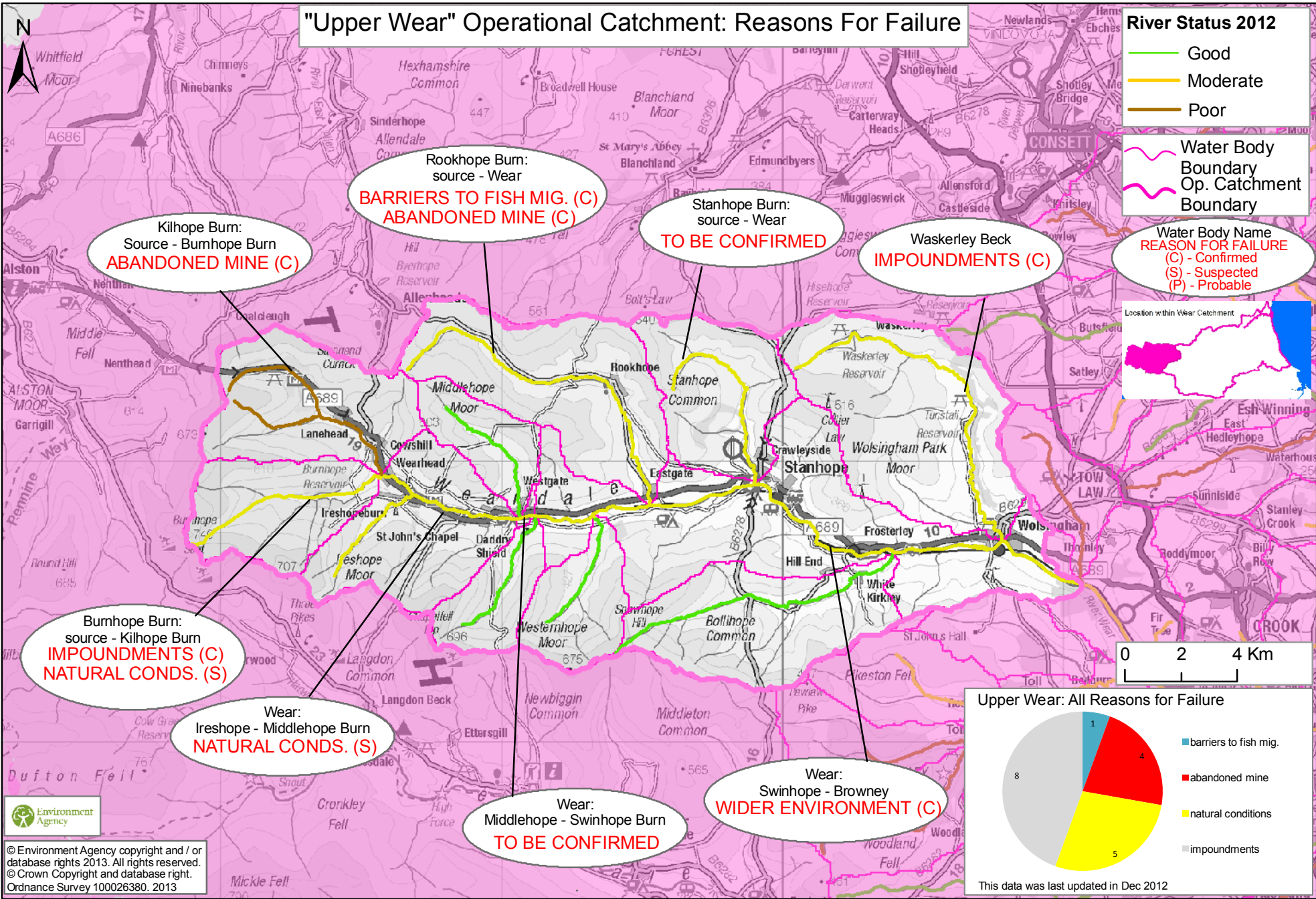


Figure 1. Operational Catchments within the Wear Catchment.

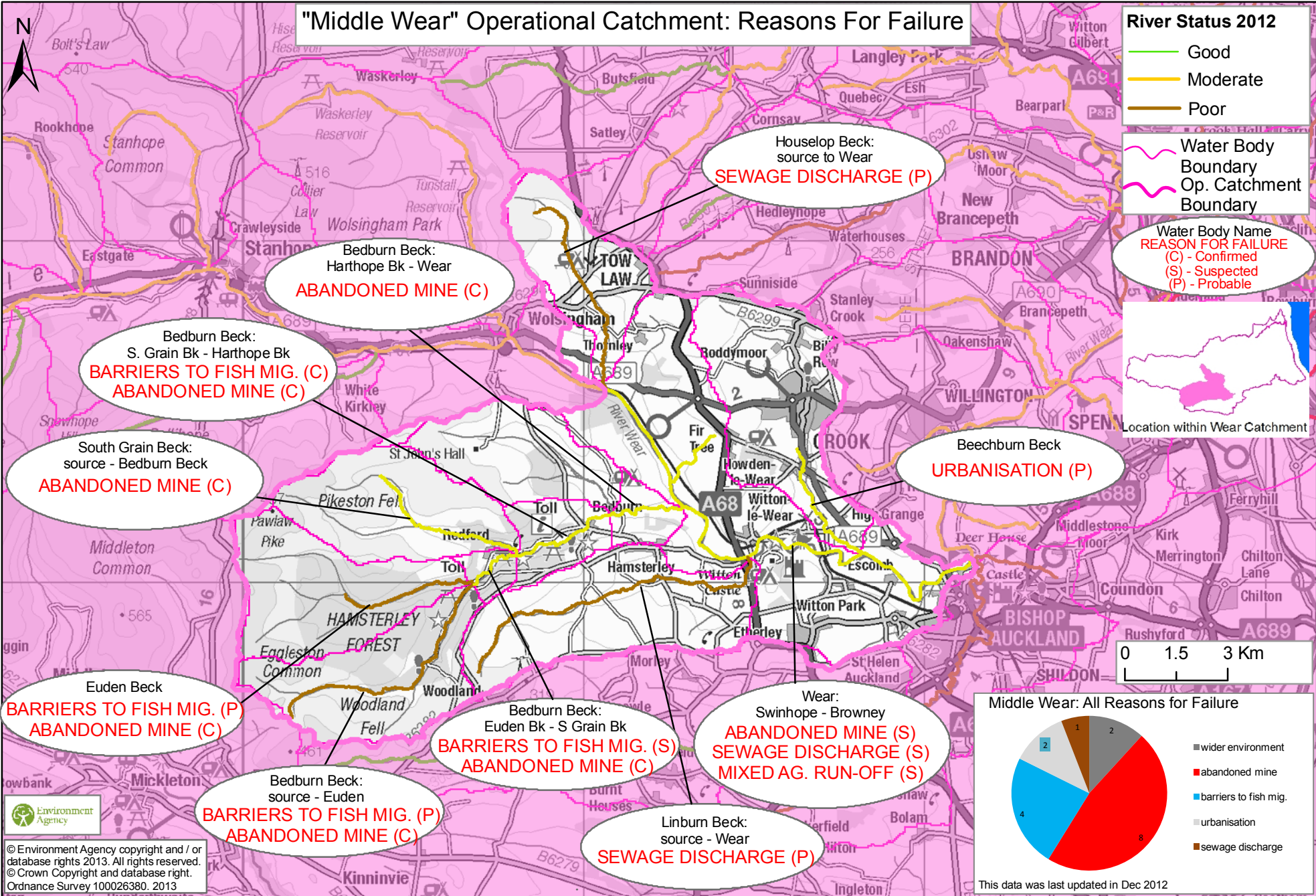
Failing Element 2012	Fish	Inverte-	Phytobenthos	Macrophytes	Flow	Mitigation Measures Ass.	Expt. Judgement	Ph	Ammonia	Phosphate	Zinc	Copper	Dissolved Oxygen	Tributyltin
Op. Catchment														
Browney	5		4			2				4				
Gaunless	2	1	2							1				
Lower Wear and Estuary	7	8	10	3	6	7	4		4	8			1	1
Middle Wear	7		2			1				1	2	2		
Seaham Peterlee Coastal Area		2			8		10	2						
Upper Wear	1	2				1					5	1		

Table 1. Summary of WFD Failing elements within the Wear Subcatchments. 2012 Assessment. (Mitigation Measures Ass. refers to 'heavily modified' Water Bodies requiring a programme of physical works to improve their status.)

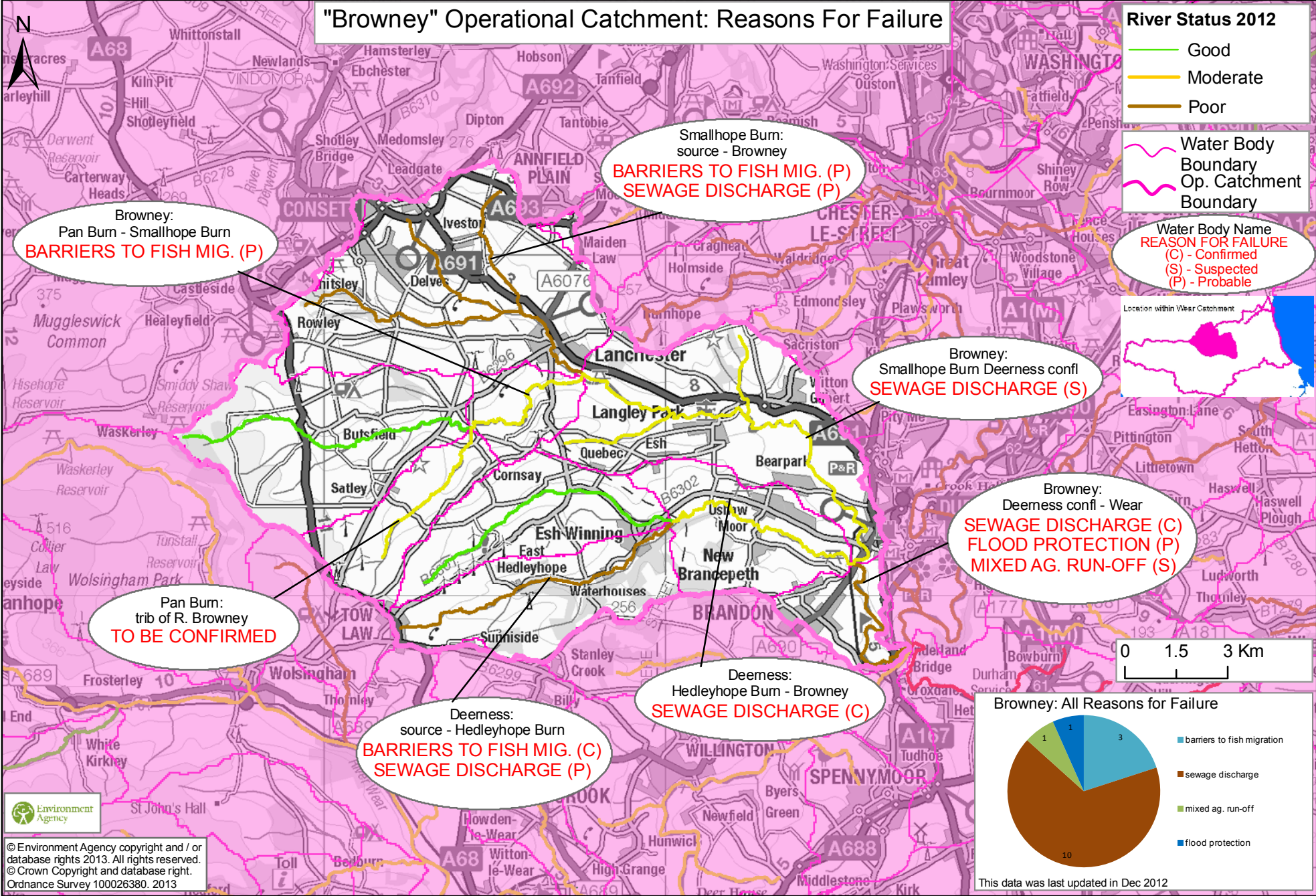
"Upper Wear" Operational Catchment: Reasons For Failure



"Middle Wear" Operational Catchment: Reasons For Failure



"Browney" Operational Catchment: Reasons For Failure

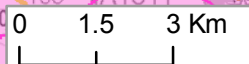
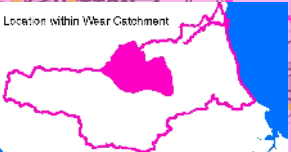


River Status 2012

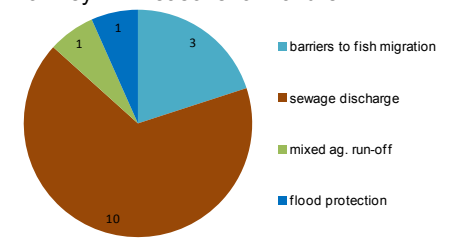
- Good
- Moderate
- Poor

- Water Body Boundary
- Op. Catchment Boundary

- Water Body Name
- REASON FOR FAILURE
- (C) - Confirmed
- (S) - Suspected
- (P) - Probable

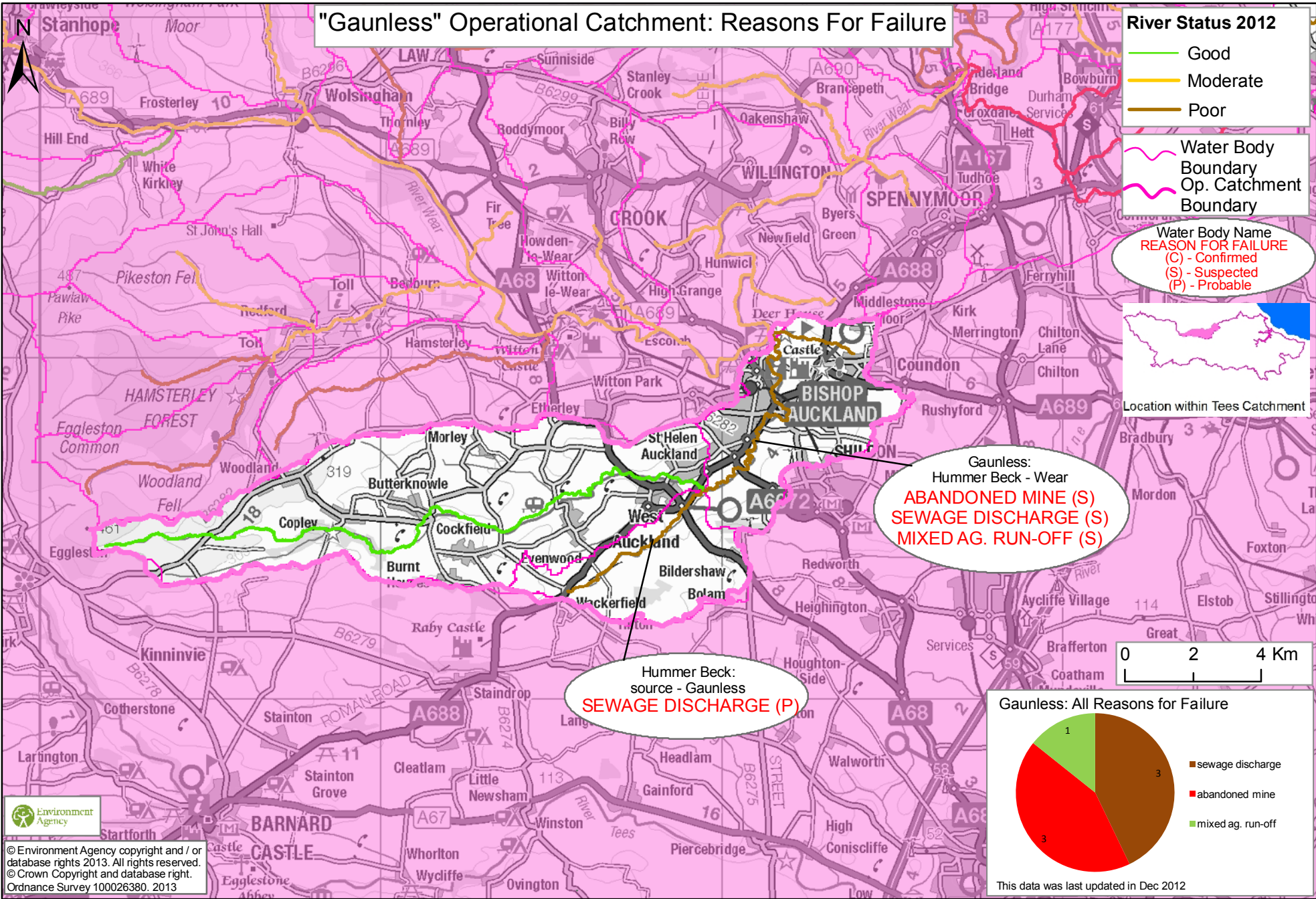


Browney: All Reasons for Failure

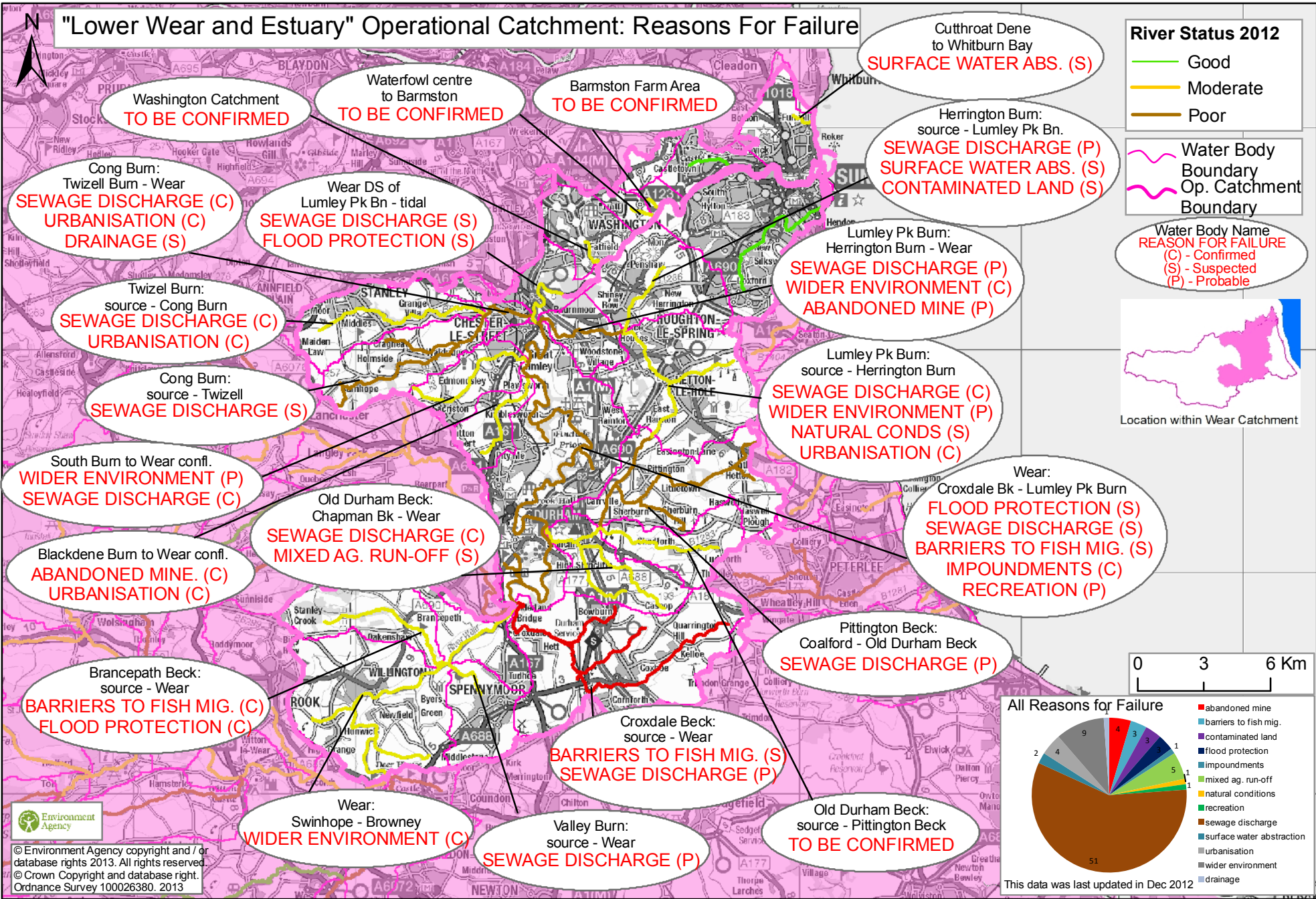


This data was last updated in Dec 2012

"Gaunless" Operational Catchment: Reasons For Failure



"Lower Wear and Estuary" Operational Catchment: Reasons For Failure

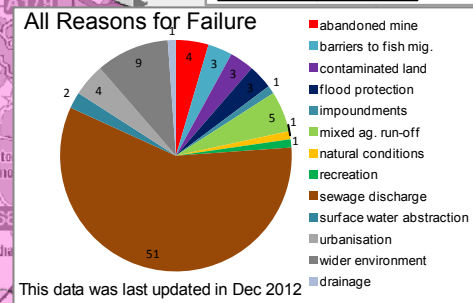
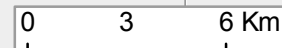


River Status 2012

- Good
- Moderate
- Poor

Water Body Boundary
Op. Catchment Boundary

Water Body Name
REASON FOR FAILURE
(C) - Confirmed
(S) - Suspected
(P) - Probable



Environment Agency
© Environment Agency copyright and / or database rights 2013. All rights reserved.
© Crown Copyright and database right. Ordnance Survey 100026380. 2013

"Seaham Peterlee Coastal Area" Operational Catchment: Reasons For Failure

