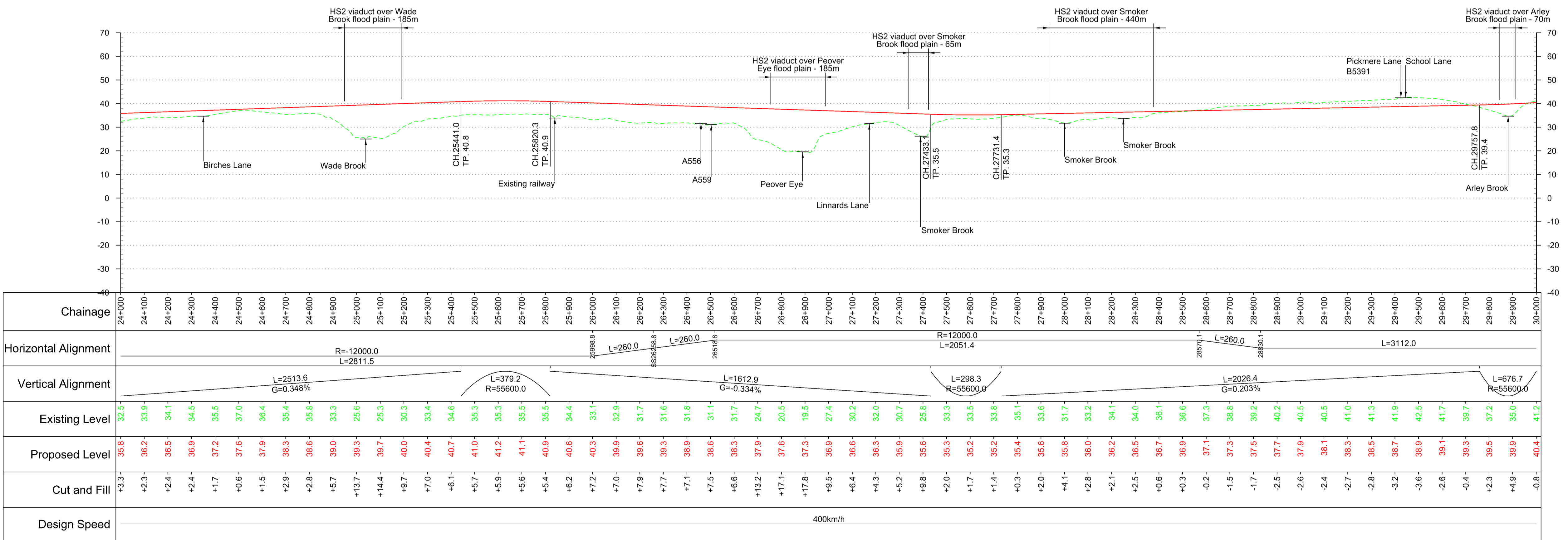
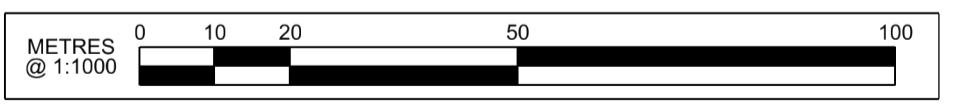
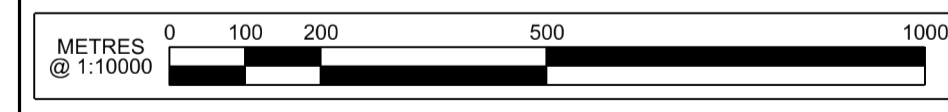


Plan
Scale 1:10,000 @ A1



Profile
Scale H:1:10,000 V:1:1000 @ A1

Fit for Condition A



Rev	Description	Drawn	Checked	Con App	HS2 App
P06	Issued for Condition A	MB	DC	JG	
P05	Issued for Condition A	08/07/13	08/07/13	08/07/13	
P04	Issued for Condition A	06/07/13	05/07/13	05/07/13	
P03	For Review	20/06/13	21/06/13	21/06/13	
P02	For Review	31/05/13	31/05/13	31/05/13	
P01	For Review	31/05/13	31/05/13	31/05/13	

HS2 accepts no responsibility for any circumstances which arise from the reproduction of this document after alteration, amendment or abbreviation or if it is issued in part or issued incompletely in any way.

© Crown Copyright and database right 2012. All rights reserved. Ordnance Survey Licence number 100049190

© Crown Copyright material is reproduced with the permission of Land Registry under delegated authority from the Controller of HMSO. This material was last updated on 2012 and may not be copied, distributed, sold or published without the formal permission of Land Registry. Only an official copy of a title plan or register obtained from the Land Registry may be used for legal or other official purposes.

Scale with caution as distortion can occur.

Key Environmental Features Legend	
	World Heritage Site
	Ramsar
	Special Areas of Conservation
	Special Protection Areas
	SSSI
	National Nature Reserves
	Area of Outstanding Natural Beauty
	National Park
	Scheduled Monuments
	Registered Parks and Gardens
	Historical Battlefields
	Active and/or Authorised Landfill
	Historical Landfill
	Flood Zones

Legend	
	Track Centrelines
	Viaduct
	Tunnel
	Fully Retained Cutting/Fill
	Major Contour
	Ground Profile
	Track Profile
	Minor Contour
	Node
	Retained structures will be used at depths of 15m or greater
	Engineering Earthworks
	Railway Cutting
	Railway Embankment
	HS2 Depot/Station Operational Boundary

Registered in England
Registration No. 06791686
Registered office:
Eland House
Bressenden Place,
London, SW1E 5DU

Creator/Originator
AECOM

HS2 Security Classification
INTERNAL

Zone	Manchester Leg North of Crewe
Design Stage	Pre-Consultation
Drawing Title	Route HSM10 Plan and Profile Sheet 5 of 6

Project/Contract			West Midlands to Manchester Route
Discipline/Function			Railway Track
Drawn	Checked	Approved	
KB	DC	JG	
Date	Scale	Size	
18/04/2013	AS SHOWN	A1	
Drawing No.			Rev.
C320-AEC-RT-DPP-220-061005			P06