



Ministry of
JUSTICE



HM Courts
& Tribunals
Service

Quarterly Tribunals Statistics, 1 April 2011 to 30 June 2011

29 September 2011

© Crown copyright
Produced by the Ministry of Justice

Alternative format versions of this report are available on request from Her Majesty's Courts and Tribunals Service by emailing tsstats@hmcts.gsi.gov.uk.

Contents

Introduction	2
Key Findings	3
Commentary	5
Annex 1 – HM Courts and Tribunals Service	13
Explanatory Notes	15
Data quality and sources	16
Definitions	17
Table conventions	20

Tables

Table 1.1 Tribunals receipts by quarter and Jurisdiction
Table 1.1a Employment Tribunals receipts by quarter and Jurisdiction
Table 1.1b Immigration and Asylum receipts by quarter and case type
Table 1.1c Social Security and Child Support receipts by quarter and benefit type
Table 1.2 Tribunals disposals by quarter and Jurisdiction
Table 1.2a Employment Tribunals disposals by quarter and Jurisdiction
Table 1.2b Immigration and Asylum disposals by quarter and case type
Table 1.2c Social Security and Child Support disposals by quarter and benefit type
Table 1.2d Social Security and Child Support outcomes by quarter and benefit type
Table 1.2e Immigration and Asylum outcomes by quarter and case type
Table 1.3 Tribunals Caseload Outstanding by quarter and Jurisdiction
Table 1.4 Tribunals Timeliness Measures by quarter and Jurisdiction

Introduction

This report presents information on Tribunals activity for the first quarter of the 2011-12 year (1 April to 30 June 2011). Information for the same quarter of earlier years is also presented.

Quarterly Official Statistics for Tribunals, for all four quarters of 2010-11 (April 2010 to March 2011) have been published and are available at www.justice.gov.uk/publications/statistics-and-data/tribunals/quarterly.htm.

Annual Official Statistics for Tribunals for 2010-11 have been published. The report is available at www.justice.gov.uk/publications/statistics-and-data/tribunals/annual-stats.htm.

Statistics for Employment Tribunals and Employment Appeal Tribunal activity for 2010-11 were published on 3 September 2011 in "Employment Tribunal and EAT statistics 2010-11". This publication is available at: <http://www.justice.gov.uk/publications/statistics-and-data/tribunals/employment-tribunal-and-eat-statistics-gb.htm>

Statistics on the work of the civil, family, magistrates' and Crown Courts in England and Wales during the period April to June 2011 are also published by the MoJ at the same time as this report. These quarterly courts statistics, along with annual statistics, can be found in separate reports on the MoJ website, at: <http://www.justice.gov.uk/publications/statistics-and-data/courts-and-sentencing/index.htm>

Key Findings

All Tribunals Combined

- Between 1 April and 30 June 2011, there were 179,300 receipts or cases. – a fall of 6% over the same quarter of the previous year, but a 13% increase on the number in the same quarter of 2009-10. There were 180,200 disposals in April to June 2011 – an increase of 10% on the same quarter in 2010-11 and 25% on that for 2009-10.
- For all tribunals combined, the caseload outstanding was 750,000 - 63% of this was for multiple ET claims. The caseload of 750,000 was a small fall on that at the end of the previous quarter), but 14% higher than on 30 June 2010. For some Tribunals, the caseload outstanding has fallen in the last year – by 9% for single Employment Tribunal cases, by 10% for Mental Health and by 22% for Criminal Injuries Compensation.

Social Security and Child Support

The Social Security and Child Support Tribunal (SSCS) arranges and carries out independent hearings for appeals on decisions made by the Department for Work and Pensions (including Jobcentre Plus, Child Support Agency and Disability and Carers Service), as well as other government departments (HM Revenue and Customs) and local authorities.

- There were 90,000 receipts to Social Security and Child Support, a decrease of 7% compared to the same quarter of last year. This was a 47% increase compared to the April to June quarter of 2009-10.
- There were 107,200 disposals made by the SSCS Tribunal - a 31% increase compared to the April to June quarter of 2010-11 (and 73% when compared with the same quarter of 2009-10).
- There were 82,500 SSCS hearing clearances (those cases disposed of at hearing) during April to June 2011, a 36% increase on the number in the same quarter of 2010-11.
- There was a 31% increase in the number of disposals associated with Employment Support Allowance (ESA) and Incapacity Benefit (IB).

Employment Tribunals

The Employment Tribunals are independent judicial bodies who determine disputes between employers and employees over employment rights.

- Between 1 April and 30 June 2011, Employment Tribunals received 47,800 cases - an 8% increase in overall claims to Employment Tribunals, compared to the same quarter of last year. The number of single claims

decreased slightly (by 1%), whilst the number of multiple claims went up by 12% and is affected by the 20,600¹ resubmitted airline cases received in June 2011.

- In April to June 2011, there were 25,800 disposals made by the Employment Tribunals – a 16% fall compared to the same quarter a year ago². The number of single disposed cases fell by 16% and multiple disposed cases fell by 17%.

First Tier Immigration and Asylum Tribunal

The First-tier Tribunal (Immigration and Asylum Chamber) is an independent Tribunal dealing with appeals against decisions made by the Home Secretary and his officials in immigration, asylum and nationality matters.

- Compared to the same quarter of 2010-11, there was a fall of 22% in overall numbers of receipts to the First Tier Immigration and Asylum Chamber to 26,700 during April to June of 2011. The overall fall in receipts was reflected in all case types, with receipts for Entry Clearance Officer³ falling by 29% and those for Managed Migration⁴ going down by the same percentage.
- For Immigration and Asylum, the number of disposals was 33,600 between April and June 2011, 10% fewer than in the same quarter of 2010-11.

¹ Of the 20,600 resubmitted multiples, 19,600 were Working Time Directive claims and 970 Unauthorised Deductions (formerly Wages Act).

² There may be a small undercount of Employment Tribunals disposals in 2010-11 due to change of computer system during the year.

³ Entry Clearance Officer cases are appeals generated by people who are not already in the UK, but have been refused permission to enter or stay in the UK for a fixed period of time, or to live here permanently.

⁴ Appeals generated by people already in the UK who have been refused permission to extend their stay here (either permanently or temporarily). This appeal type will also cover occasions where an individual has their permission to be in the UK revoked.

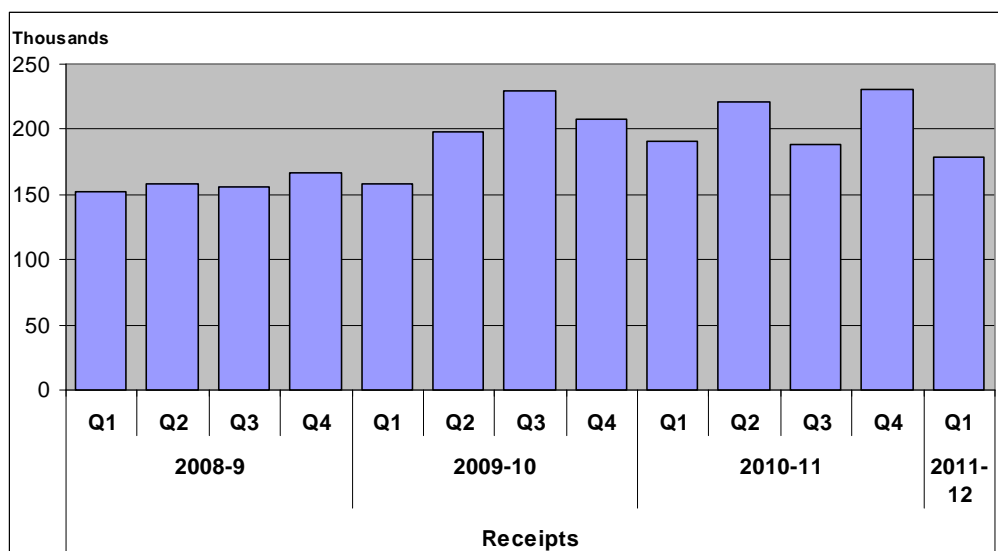
Commentary

Receipts (Table 1.1)

1. Tribunals had 179,300 receipts during April to June 2011. This is a 6% decrease on the number received in the first quarter of 2010-11, but a 13% rise on those received in the same quarter of 2009-10. The fall in the number of receipts was not seen in all Tribunals. Compared with the same period of 2010-11, the number of receipts in the period 1 April – 30 June 2011 went down in Asylum and Immigration (by 22%) and in Social Security and Child Support (SSCS) – by 7%. However, the number of cases received by Employment Tribunals (ET) went up by 8% overall (attributed to multiple cases⁵ including 20,600 resubmitted multiple airline cases) and there was a 6% rise for Mental Health receipts.

2. Excluding multiple claims to Employment Tribunals (which vary from year to year and can distort the picture on workload), there was a 9% fall in the number of receipts in April to June 2011 as compared with the same period in 2010.

Figure 1: Receipts for all Tribunals, 2008-09 to 2011-12



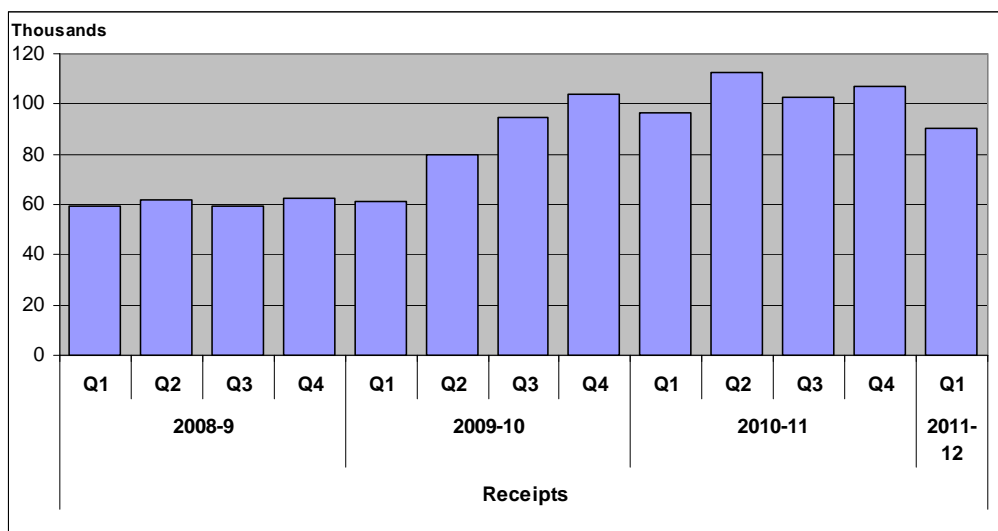
Source: Tribunals quarterly and annual reconciled returns

⁵ Multiple cases are where two or more people bring cases, involving one or more jurisdiction(s) usually against a single employer but not necessarily so, for instance in Transfer of Undertakings (Protection of Employment) Regulations (TUPE) cases, and always arising out of the same or very similar circumstances. As a multiple, the cases are processed together.

Receipts by Jurisdiction

3. For SSCS, there were 90,000 receipts between April and June 2011 – representing half of cases received by all Tribunals. When compared with the same quarter in previous years, the number of receipts was 7% fewer than in 2010-11, but 47% more than in the same period of 2009-10.

Figure 2: Social Security and Child Support Receipts, 2008-09 to 2011-12



Source: Tribunals quarterly and annual reconciled returns

4. Of the 90,000 cases received by SSCS during April to June 2011, 52% were for Employment Support Allowance (ESA)/Incapacity Benefit (IB); 21% for Disability Living Allowance (DLA)/Attendance Allowance (AA); and 14% for Job Seeker’s Allowance (JSA). After a rising trend, the number of receipts of ESA/IB cases fell by 16% to 46,500 compared to the same quarter last year. This was mainly a result of a large fall in the number of Incapacity Benefit appeals (from 9,400 in April to June 2010 to 3,600 in April to June 2011) as no new benefit claimants to Incapacity Benefit have been accepted since February 2011, with all new claims relating to ESA .

5. Comparing receipts in the first quarter, those for Pensions Credit have risen by 72%, Carer’s Allowance has gone up 63%; JSA have increased by 44%; those for the Industrial Injuries Disablement Benefit have fallen by 46%.

6. In Employment Tribunals (ET), the number of receipts (claims) between 1 April and 30 June 2011 was 47,800 – 8% more than in the same quarter of 2010-11, and 13% more than for the quarter in 2009-10. The rises were due to the increased number of multiple receipts received in the first quarter of 2011-12. There were 32,900 multiple receipts in this quarter– an increase of 12% when compared with the same quarter in 2010-11. The total number of ET claims is dependent upon multiple receipts, which are highly variable in

nature. The number of single claims fell slightly by 1% from 15,100 from 1 April to 30 June 2010, to 14,800 for the same period of 2011-12.

7. For ET, when the jurisdictional⁶ mix of claims is considered (Table 1.1a), there were 77,600 jurisdictional complaints received from 1 April – 30 June 2011 (a fall of 3% on the same quarter in 2010-11). Of the total number of jurisdictional complaints received, 34% were for Working Time Directive (includes resubmitted airline cases); 31% were for unfair dismissal, redundancy and breach of contract and 8% were for Equal Pay.

8. When comparing the April to June quarter of 2010-11 with that of 2011-12, the number of jurisdictional claims associated with Working Time Directive (mainly resubmitted airline cases) went up 43% (from 18,700 to 26,600), as a result of a large number of resubmitted airline cases (19,600) entered onto systems in June 2011. Those for the transfer of an undertaking, failure to inform and consult also rose by 91% over the time period, with rises also for Part-Time Workers Regulations (up 16%) and Disability Discrimination (up 14%). Over the same time period, there were falls in receipts for a number of jurisdictions – a 35% fall for age discrimination and 18% for unfair dismissal, breach of contract and redundancy.

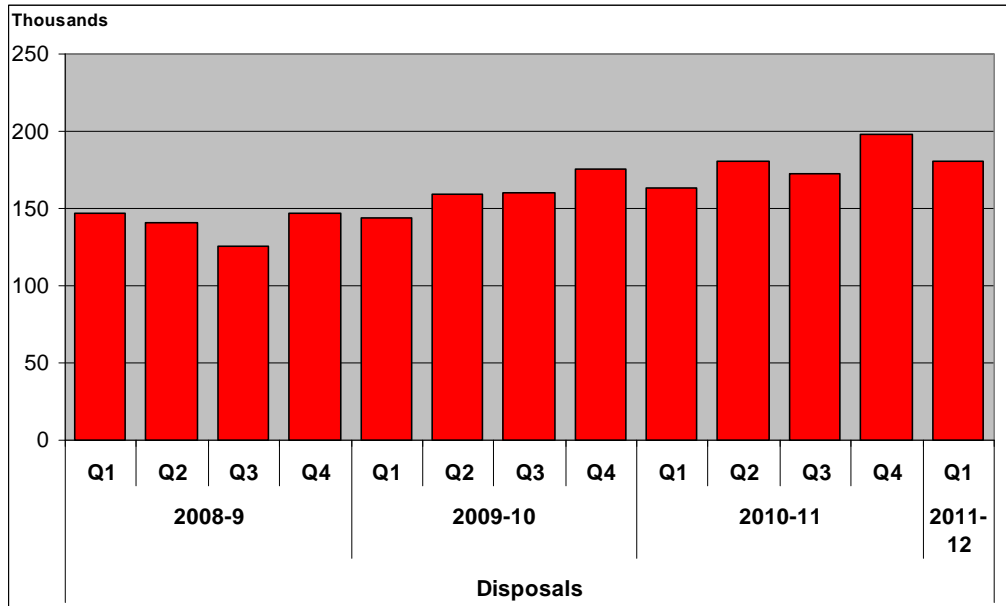
9. In the First Tier Immigration and Asylum Chamber, there were 26,700 receipts between April and June 2011 – a 22% fall when compared with the same quarter of 2010-11 and a 36% fall compared to that quarter in 2009-10. The overall fall in receipts was reflected in all case types, with receipts for Entry Clearance Officer falling by 29% and those for Managed Migration going down by the same percentage.

Disposals (Table 1.2)

10. Between 1 April and 30 June 2011, a total of 180,200 cases or claims were disposed of. This is an increase of 10% when compared with the same quarter of 2010-11 and 25% on that of 2009-10. The rise was mainly seen in Social Security and Child Support Appeals (up by 31%). There were also some rises in disposals in other tribunals such as Special Educational Needs and Disability (up by 44%) and Mental Health (up by 15%). This was a result of this year's introduction of a fast-track system in Special Educational Needs and Disability for all appeals involving secondary school transfers, and, in Mental Health, the introduction of improvements to the case progression process along with an increase in Section 2 receipts which are heard within seven days.

⁶ A claim can contain a number of grounds, known as jurisdictional complaints. In any hearing, the tribunal has to decide upon the merits of the claim made under each jurisdiction

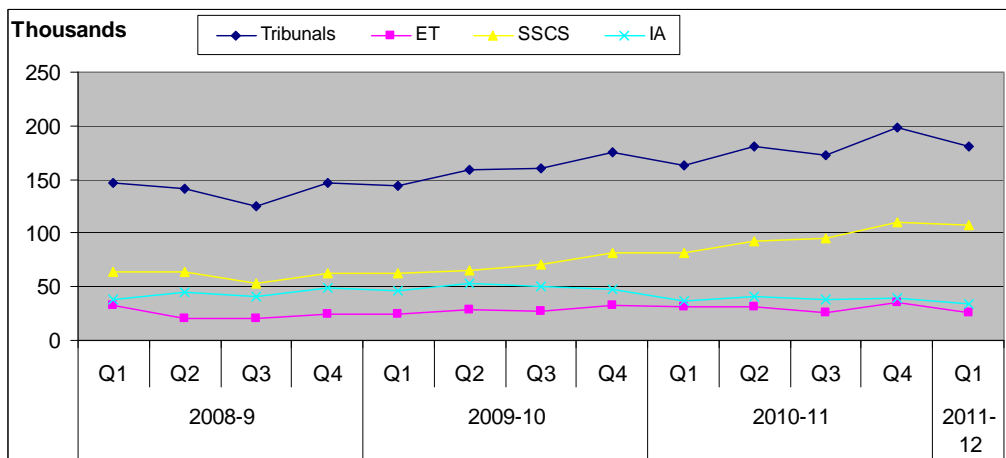
Figure 3: Disposals for all Tribunals, 2008-09 to 2011-12



Source: Tribunals quarterly and annual reconciled returns

Disposals by Jurisdiction

Figure 4: Disposals by jurisdiction, 2008-09 to 2011-12



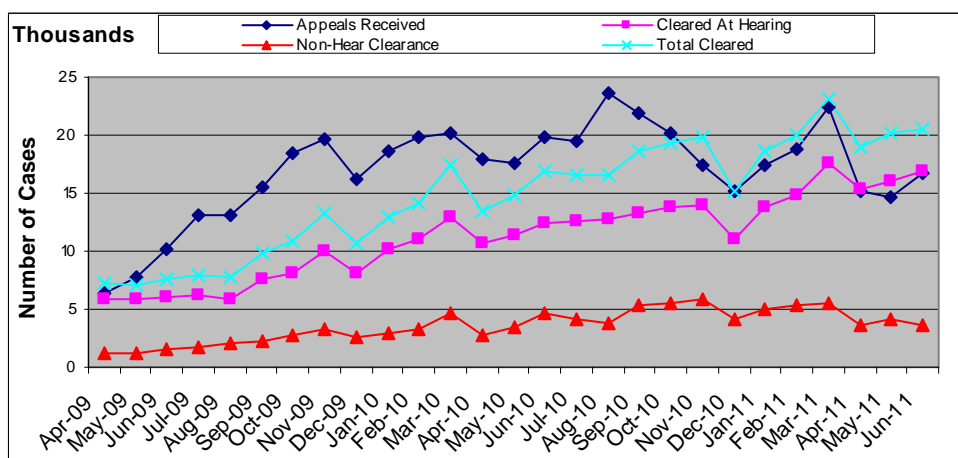
Source: Tribunals quarterly and annual reconciled returns

11. A total of 107,200 cases were disposed of by SSCS in the 1 April – 30 June period of 2011, 31% more than for the same period of the 2010-11 year and 73% more than for the same quarter of 2009-10. The number of disposals by SSCS has generally been increasing since the first quarter of 2009-10.

12. Of the 107,200 cases disposed of: 59,600 (56%) were for Employment Support Allowance (ESA)/Incapacity Benefit (IB); 20,800 (19%) were related to Disability Living Allowance (DLA)/Attendance Allowance (AA) and 13,100 (12%) were for Job Seeker's Allowance (JSA).

13. The rise in SSCS receipts over recent years has generally been in response to the introduction, in October 2008, of Employment Support Allowance to replace Incapacity Benefit (and seen in the management information from June 2009 data onwards). Figure 5 shows the change in disposals for ESA/IB benefits throughout 2009-10 to June 2011 that were cleared by having a Tribunal hearing and those that were settled or struck out (non-hearing clearances). When compared with the same period in 2010, the number of disposals for ESA/IB in April-June of 2011 has gone up by 31%.

Figure 5: Receipts and Disposals for Employment Support Allowance and Incapacity Benefit, April 2009 to June 2011



Source: Tribunals quarterly and annual reconciled returns

14. When compared with April to June of 2010, there were increases in the number of disposals for most types of benefits, with notable rises for: Job Seekers Allowance (of 71%); Social Fund (of 34%) and AA/DLA (of 27%).

15. Table 1.2d provides some information on the outcome of Social Security and Child Support cases that were cleared at hearing⁷ and whether the decision was found in favour of the appellant, or if the original decision made

⁷ These were cleared via a Tribunal (could be a panel or a member of the Judiciary sitting alone) with a decision/outcome.

by DWP was upheld. In April to June 2011, there were 82,500 hearing clearances – a 36% rise on the number in the same quarter of 2010-11. Of these, 35% were found in favour of the appellant. This proportion varied by type of benefit with 41% of Child Support, 40% of ESA/IB, 38% of DLA/AA and 8% of Social Fund hearing clearances being found in favour of the appellant.

16. During April to June 2011, Employment Tribunals disposed of 25,800 claims – a 16% decrease on the number for the same quarter of 2010-11⁸, but 4% more than the same quarter of 2009-10. Compared with April to June of 2010, the number of both single and multiple disposed cases fell (by 16% and 17% respectively).

17. Table 1.2a gives details of ET Jurisdictional claims disposed of by type of jurisdiction and outcome. Between 1 April and 30 June 2011, 53,000 jurisdictional claims were disposed of (a fall of 16% on the same period of the previous year). There were notable falls in the numbers of disposals associated with Redundancy Pay and Equal Pay, and an increase in Age Discrimination disposals. Of the 53,000:

- 40% were unfair dismissal, breach of contract or redundancy;
- 15% were associated with unauthorised deductions (Wages Act).

21. Of the total jurisdictions disposed of during April to June 2011:

- 33% were Acas Conciliated; 29% were withdrawn; and 11% were successful at hearing.

18. For Immigration and Asylum, overall there were 33,600 disposals in April to June 2011 – 10% fewer than in the same quarter of 2010-11 and 28% fewer than in the same quarter of 2009-10.

19. Comparing April to June of 2010 with that of 2011 by case type (Table 1.2b), there was an 11% increase in the number of disposals for Entry Clearance Officer; a 21% fall for Family Visit Visa, 19% fall in Asylum and a 7% fall for Managed Migration disposals.

20. Table 1.2e gives outcomes for those Immigration and Asylum cases that were disposed of. Of the 33,600 cases that were disposed of between 1 April and 30 June 2011:

- 14,800 (44%) were dismissed;
- 13,000 (39%) were allowed;
- 5,800 (17%) were withdrawn.

⁸ There may be a small undercount in ET disposals during 2010-11 because of changes to computer systems during the year.

Caseload Outstanding (Table 1.3)

21. At 30 June 2011, the caseload outstanding was 750,000, a small fall on the 751,600 at 31 March 2011, but 14% higher than on 30 June 2010. Approximately three-fifths of the outstanding caseload at the end of the quarter related to 'multiple' claims in Employment Tribunals. Collections of two or more of these cases are grouped and managed together. They are often legally and factually complex and at any point in time it is common for such cases to be 'stayed', meaning that they are not ready to have a final hearing at that time for some reason, for example due to awaiting the decision of an appellate court on case management or other interim matters.

22. For some Tribunals, the caseload outstanding has fallen in the last year – by 9% for single Employment Tribunal cases, by 10% for Mental Health and by 22% for Criminal Injuries Compensation.

Performance Measures

23. The MoJ's Corporate Strategy for 2011-2015 set out how it intended to transform itself and the justice system over the next four years. A commitment was made in the HMCTS Business Plan for 2011-2015 to publish information about the operation of courts and tribunals to assist users to assess the efficiency and effectiveness of public services. Impact indicators were suggested for the four largest tribunals – Social Security and Child Support, Employment Tribunals, Immigration and Asylum and Mental Health.

24. The new measures examine the process from receipt to the point at which the appellant is notified of the outcome of the hearing (or when they are notified of a settlement, withdrawal or strike out) and are thus on a different basis to the former Primary Performance Indicators.

25. When examining the measures, a number of points should be noted:

- The clearance times (expressed in weeks or years) are highly dependent upon the processes that take place within a Tribunal and the type and complexity of a case. In some cases, a judgement is awaited from another body (for example European Courts), stayed or is legally complex.
- The measures can not be directly compared between one Tribunal and another because of the different processes. Thus, it is better to compare a specific Tribunal over time.

26. Table 1 shows the cumulative percentage of clearances that took place in the period April to June 2011, by the age of the case at clearance. As there are differences by case type, clearances for Immigration and Asylum, Employment Tribunals and the Mental Health Tribunal have been displayed by case type. The following new measures examine the age of a case when it is cleared or disposed of and gives the point at which 25%, 50% (the median) and 75% were cleared. For example, in SSCS, 75% of cases that were cleared in the period 1 April to 30 June 2011 were aged 34 weeks or less.

Table 1: Cumulative percentage of clearances that took place in April to June 2011, by age of case at clearance

Tribunal		25% point	50% point	75% point
Immigration and Asylum (all)		8 weeks or less	14 weeks or less	24 weeks or less
	Asylum	5 weeks or less	6 weeks or less	9 weeks or less
	Managed Migration	7 weeks or less	8 weeks or less	10 weeks or less
	Entry Clearance Officer	19 weeks or less	24 weeks or less	30 weeks or less
	Family Visit Visa	12 weeks or less	21 weeks or less	25 weeks or less
Employment Tribunals (all)		16 weeks or less	34 weeks or less	1-2 years
	ET single cases	11 weeks or less	20 weeks or less	34 weeks or less
	ET multiple cases	38 weeks or less	1-2 years	3-4 years
Social Security and Child Support		9 weeks or less	21 weeks or less	34 weeks or less
Mental Health – Section 2 cases		Less than a week old	Less than 2 weeks old	Less than three weeks old
Mental Health – Non-Restricted Patients		Less than 4 weeks	Between 8 and 9 weeks	12 weeks or less
Mental Health – Restricted Patients		Between 10 and 15 weeks	Between 10 and 15 weeks	17 weeks or less

27. HMCTS previously had a set of Primary Performance Indicators for each jurisdiction, which were largely based upon waiting times from receipt to disposal. As of April 2011, these are no longer performance indicators but statistics continue to be published in Table 1.4 of this report so that users are able to compare these particular aspects of timeliness over time.

Annex 1 – HM Courts and Tribunals Service

Her Majesty's Courts and Tribunals Service (HMCTS) was created on 1 April 2011. It is an agency of the MoJ and is responsible for the administration of the criminal, civil and family courts and tribunals in England and Wales and non-devolved tribunals in Scotland and Northern Ireland.

This executive summary page provides high-level findings for the courts and tribunals which are administered by HMCTS during the quarter April to June 2011.

- There were **365,000 civil (non-family) claims issued in the county courts** during the quarter April to June of 2011, a seven per cent decrease than in the corresponding period of 2010. Civil claims issued have generally declined since the first quarter of 2008.
- In the family courts, there were **7,400 children involved in public law applications** made in the quarter April to June of 2011, a 22 per cent increase on the same period of the previous year, and **24,500 children involved in private law applications**, a 22 per cent decrease. The downward trend in the number of children involved in private law applications, which began at the end of 2009, continued into the second quarter of 2010, reaching the lowest level seen in the last three years.¹
- There were **422,700 criminal proceedings completed in magistrates' courts** during April to June of 2011, around five per cent less than in the same period of 2010. The long-term trend has been a decreasing volume of completed criminal proceedings. Some 44 per cent of trials in the magistrates' courts during the quarter were effective, continuing a flat trend over the last two years.
- A total of **35,700 cases were received in the Crown Court** in the quarter April to June of 2011, a seven per cent decrease on the number received in the corresponding quarter of 2010. Some 45 per cent of listed trials were effective, continuing a flat trend over the last two years. The 'average waiting time' – the average time between the date of sending or committal to the Crown Court and the start of the substantive Crown Court hearing – was 24.0 weeks for cases where a not guilty plea was entered, compared to 11.9 weeks for cases where a guilty plea was entered.

¹ The data compilation methodology for the public and private law application figures is under review. Therefore, the figures for 2010 and 2011 may be subject to revision. Please refer to Annex A of *Court Statistics Quarterly* for further details.

- There were around **10,000 trial listings** in the Crown Court in the second quarter of 2011, compared to 10,700 in the second quarter of 2010. Of these, 45 per cent were recorded as 'effective', with 40 per cent 'cracked' and 15 per cent 'ineffective'. The rates of effective, cracked and ineffective trials have remained consistent over the past two years.
- During April to June 2011, there were **179,300 cases received by all tribunals**, a six per cent decrease over the same quarter of the previous year. This included 90,000 cases to the Social Security and Child Support Tribunal, 47,800 cases to the Employment Tribunals and 26,700 cases to the First-Tier Immigration and Asylum Tribunal.
- There were **180,200 cases disposed of by all tribunals** during the quarter April to June 2011, an increase of ten per cent on April to June 2010. The caseload outstanding at 30 June 2011 was 750,000. Sixty three per cent of the caseload outstanding was for multiple Employment Tribunals claims.

Explanatory Notes

ET Information in Nottingham and Leicester

Historically, Employment Tribunals statistics have been extracted from the ETHOS case management system. However, a pilot replacement system was developed (Caseflow). The pilot of the Caseflow system commenced in Nottingham in November 2009, and whilst steps were taken to protect the data through to the end of the 2009-10 reporting year (i.e. to 31 March 2010), the resource required to maintain duplicated entry onto the old ETHOS system was simply not sustainable. There was every expectation that the new system would be in a position to provide the data very early in the new reporting year. The pilot of Caseflow was extended to Leicester with effect from 24 May 2010. Data for Leicester was available from ETHOS up until that point.

The Caseflow system has now ceased and a reversion has taken place to the former ETHOS system. In some cases complete data has not been available for Nottingham and Leicester. Whilst there is robust data on receipts of claims, disposals and caseload outstanding, with regard to Nottingham and Leicester, jurisdictional claims and performance data is incomplete. Thus we have removed data for these two areas when making comparisons with previous years.

Data quality and sources

Information presented in this report is management information drawn from a number of administrative sources. Although care is taken when processing and analysing the data, the details are subject to inaccuracies inherent in any large-scale recording system and it is the best data that is available at the time of publication. HMCTS is examining the quality of management information. Thus, it is possible that some revisions may be issued.

Revisions

Some statistics were correct at the time of publication but have been revised following data quality checks or reconciliation. These values have been marked as 'r'.

Change of Names of Tribunals

A number of Tribunals became part of the former Tribunals Service since it was formed, or have changed their name. Details of these changes have been published in Annex A of The Tribunals Service Annual Report and Accounts, 2009-10.

Definitions

Receipt – Volumetric term covering the acceptance of a case by a HMCTS Tribunal.

Disposal – A disposal is the closure of a case when work has ceased to be done. This can be through a claim being withdrawn, settled, dismissed or being decided at a hearing.

Hearing clearance (SSCS) – these are cleared via a Tribunal (could be a panel or member of the Judiciary sitting alone) with a decision/outcome.

Non-hearing clearance (SSCS) – these are cases withdrawn prior to a hearing, struck out or superseded. There is no Tribunal judgement.

Caseload outstanding – The number of cases outstanding at the end of the period and still waiting to be dealt with to completion.

ET Claim – A claim may be brought under more than one jurisdiction or subsequently amended or clarified in the course of proceedings, but will be counted only once.

ET single and multiple claims – Claims to the Employment Tribunal may be classified into two broad categories – singles and multiples. Multiple cases are where two or more people bring cases, involving one or more jurisdiction(s) usually against a single employer but not necessarily so, for instance in Transfer of Undertakings (Protection of Employment) Regulations (TUPE) cases, and always arising out of the same or very similar circumstances. As a multiple, the cases are processed together.

ET Jurisdiction – The Employment Tribunal powers to hear a claim are determined by legislation, with statutory provisions defining the ambit of the jurisdiction that can be covered by a claim to an Employment Tribunal.

ET Jurisdictional mix – A claim may contain a number of grounds, known as jurisdictional cases. In any hearing, the tribunal has to decide upon the merits of the claim made under each jurisdiction e.g. unfair dismissal and sex discrimination. The total number of jurisdictions covered by each case gives a truer measure of workload than the number of claims. The jurisdictions covered by ET are wide ranging, from discrimination and unfair dismissals to issues around salary and working conditions.

IA Case types:

Asylum – appeals against a refusal to grant asylum, including asylum claims which raise Human Rights grounds.

Managed Migration – appeals generated by people already in the UK who have been refused permission to extend their stay here (either permanently or temporarily). This appeal type will also cover occasions where an individual has their permission to be in the UK revoked.

Family Visit Visa (FVV) – appeals against decisions not to allow temporary visits to see family in the UK.

Entry Clearance Officer (ECO) – appeals generated by people who are not already in the UK, but have been refused permission to enter or stay in the UK for a fixed period of time, or live here permanently.

Deport Appeals – appeals against deportation orders made against people by the Home Secretary, introduced by section 32 of the UK Borders Act 2007. Other appeals with a deport element are included in the Asylum and Managed Migration case categories.

Human Rights Appeals – This appeal category is now defunct and appeals raising Human Rights grounds are recorded more accurately under different categories.

Hearing – The hearing is a meeting at which the tribunal panel considers evidence (either orally or paper based) and reaches a decision (where the decision may be to adjourn or to agree a final outcome). If the hearing is adjourned and restarted, it counts as one hearing.

Examples of hearings include:

- Paper hearings;
- Oral hearings;
- Case Management Discussions;
- Decision on Eligibility.

Oral Hearing – A hearing where the party (ies) and/or their representative(s) attend (this can also be by telephone or by video conference).

Paper Consideration or Hearing – Consideration of the case using documents, and not requiring any physical appearance by the parties.

Decision in favour (SSCS) – Decision in favour of the appellant.

Decision upheld (SSCS) – Decision made by the First Tier Agency and withheld by the Tribunal.

Withdrawal – The applicant/claimant/appellant ceases action either before or at the hearing.

Settlement – Cases settled without the need for a hearing. A third party may have been involved in the process.

Postponement – Where a case is taken out of the list, **prior to** the commencement of the hearing – can be done by the applicant, or any other party.

Adjournment – Where, on the day of the hearing, the Panel decides that, for whatever reason, the appeal/case cannot be finalised and has to put off making a final decision to another date, for example because further evidence is required.

Outcome of hearing – The outcome of the hearing is the final determination of the proceedings or of a particular issue in those proceedings; it may include an award of compensation, a declaration or recommendation and it may also include orders for costs, preparation time or wasted costs either in favour or against an appellant. **Note:** ET records outcomes for each act (or jurisdiction), not for the hearing.

Caseload outstanding – The number of cases outstanding at the end of the period and still waiting to be dealt with to completion.

Table conventions

Rounding

Figures in the tables are rounded independently and thus may not add to figures because of rounding. The following conventions have been used throughout:

- Values less than 100 remain as unit values.
- Values from 100 to 999 are rounded to the nearest 10.
- Values of 1,000 and over are rounded to the nearest hundred.

Notation

The following symbols have been used throughout the tables in this bulletin:

.	= Not applicable
..	= Not available
-	= Small Value
~	= No cases dealt with so rate could not be calculated
0	= Nil
(r)	= Revised data
(p)	= Provisional data

Contact points for further information

Spreadsheet files of the tables and graphs contained in this document are also available for download from this address.

Press enquiries should be directed to the Ministry of Justice press office:

Email: press.office@justice.gsi.gov.uk

Other enquiries about these statistics should be directed to:

HMCTS

Performance, Analysis and Reporting Team

4th Floor

Taylor House

88 Rosebery Avenue

London EC1R 4QU

Email: mtsstats@hmcts.gsi.gov.uk

General enquiries about the statistical work of the Ministry of Justice can be e-mailed to: statistics.enquiries@justice.gsi.gov.uk

General information about the official statistics system of the UK is available from www.statistics.gov.uk

Table 1.1 Tribunals Receipts by Quarter and Jurisdiction

	2009-10		2010-11				2011-12
	Q1	Q1	Q2	Q3	Q4	Annual Total	Q1
Tribunals Overall	158,600	190,300	220,900	188,800	231,000	831,000	179,300
First Tier Tribunal (Immigration and Asylum Chamber) ¹	41,600	34,100	36,300	33,100	33,400	136,800	26,700
Employment Appeal	440	520	540	490	500	2,000	540
Employment	42,100	44,400	57,600	39,900	76,200	218,100	47,800
Singles	17,800	15,100	15,400	15,100	15,100	60,600	14,800
Multiples	24,400	29,400	42,200	24,800	61,200	157,500	32,900
Social Security and Child Support	61,100	96,500	112,600	102,500	106,900	418,500	90,000
Mental Health	6,300	6,500	6,400	6,200	6,800	25,900	6,900
Adjudicator to HM Land Registry	370	360	310	250	340	1,300	360
Asylum Support	520	1,400	1,100	880	690	4,100	530
Care Standards	69	46	38	27	22	130	18
Charities	-	-	6	-	-	12	-
Claims Management Services	-	0	0	-	-	5	-
Consumer Credit Appeals	-	-	-	-	-	8	-
Criminal Injuries Compensation	1,100	880	710	550	570	2,700	570
Environmental Jurisdiction	-	0	0	0	0	0	0
Estate Agents Appeals	-	0	0	0	0	0	0
Financial Services and Markets & Pensions Regulator	-	5	17	440	240	710	490
First Tier Tribunal (Immigration Services)	-	-	5	-	-	10	-
Gambling Appeals	-	-	0	0	0	-	-
Gender Recognition Panel	75	83	86	72	62	300	84
Information Rights	26	49	44	42	85	220	49
Lands	200	230	220	150	150	750	120
Local Government Standards in England	15	15	15	9	10	49	8
Pensions Regulator²	-	-	-	-	0	8	-
Primary Health Lists	56	23	24	40	38	130	20
Reserve Forces Appeals	-	-	0	-	-	9	-
Special Commissioners (Income Tax)	-	-	-	-	-	-	-
Special Educational Needs and Disability	1,100	980	850	640	910	3,400	1,100
Tax first tier	1,700	2,300	2,300	1,900	2,500	8,900	2,300
Transport	220	140	130	140	120	520	100
Upper Tribunal (Administrative Appeals Chamber)	930	1,100	1,100	1,000	1,000	4,100	1,100
VAT & Duties	-	-	-	-	-	-	-
War Pensions and Armed Forces Compensation	640	670	550	500	500	2,200	450

Source: Tribunals Quarterly and Annual Reconciled Returns

Figures may not add to totals because of rounding

- Not applicable
- Not available
- Small Value

0 Nil

(r) Revised data

(p) Provisional data

¹ The Tribunals Service Immigration and Asylum (IA), consisting of 'First Tier Tribunal Immigration and Asylum Chamber' and 'Upper Tribunal Immigration and Asylum Chamber' (FTTIAC and UTIAC), replaced the Asylum and Immigration Tribunal (AIT) on 15 February 2010. Figures for 2010-11 relate to appeals dealt with by Immigration Judges at the FTTI Figures for 2009-10 relate to appeals dealt with by Immigration Judges at the AIT or FTTIAC.

² Pensions Regulator is combined with Financial Services & Markets from Q1 2011-12. Part of Upper Tribunal (Tax and Chancery Chamber).

Table 1.1 a Employment Tribunals Receipts by Quarter and Jurisdiction 2010-11

	2009-10		2010-11				2011-12	Number
	Q1	Q1	Q2	Q3	Q4	Annual Total	Q1	
Total Claims Accepted ¹	42,100	44,400	57,600	39,900	76,200	218,100	47,800	
Jurisdiction								
Unfair dismissal	16,000	12,800	12,100	11,600	11,400	47,900	11,100	
Unauthorised deductions (formerly Wages Act)	11,700	12,800	22,500	15,200	20,900	71,300	9,600	
Breach of contract	13,700	9,900	9,200	7,700	7,800	34,600	7,600	
Sex discrimination	4,800	2,700	8,100	5,300	2,100	18,300	2,300	
Working Time Directive	6,300	18,700	27,000	13,500	54,900	114,100	26,600	
Redundancy pay	7,100	5,100	4,100	3,300	3,500	16,000	3,500	
Disability discrimination	1,800	1,700	1,800	1,900	1,800	7,200	1,900	
Redundancy – failure to inform and consult	2,300	1,900	2,800	1,300	1,400	7,400	2,100	
Equal pay	8,400	7,100	11,100	11,100	5,300	34,600	5,800	
Race discrimination	1,300	1,300	1,300	1,300	1,100	5,000	1,200	
Written statement of terms and conditions	1,100	1,100	930	1,000	1,000	4,000	920	
Written statement of reasons for dismissal	290	250	270	200	210	930	230	
Written pay statement	310	300	360	310	370	1,300	320	
Transfer of an undertaking - failure to inform and consult	430	410	800	390	280	1,900	780	
Suffer a detriment / unfair dismissal - pregnancy	540	430	400	680	370	1,900	430	
Part Time Workers Regulations ²	180	130	1,200	130	88	1,600	150	
National minimum wage	83	120	130	150	130	520	130	
Discrimination on grounds of Religion or Belief	230	210	220	240	210	880	210	
Discrimination on grounds of Sexual Orientation	160	140	190	170	150	640	150	
Age Discrimination	1,500	1,400	1,800	2,900	770	6,800	890	
Others	2,500	1,400	1,500	1,300	1,200	5,500	1,400	
Total	80,800	79,700	107,900	79,700	115,000	382,400	77,600	

Source: ET Quarterly and Annual Reconciled Returns

Figures may not add to totals because of rounding

. Not applicable

.. Not available

- Small Value

0 Nil

(r) Revised data

(p) Provisional data

[1] A claim may be brought under more than one jurisdiction or subsequently amended or clarified in the course of proceedings but will be counted only once.

[2] The high number of receipts for Part Time Workers Regulations in Q2 2010/11 is due to a large multiple receipt in July 2010.

Table 1.1b Immigration and Asylum Receipts by Quarter and Case Type

	Number						
	2009-10	2010-11				2011-12	
	Q1	Q1	Q2	Q3	Q4	Annual Total	Q1
First Tier Tribunal (Immigration and Asylum Chamber) ¹	41,600	34,100	36,300	33,100	33,400	136,800	26,700
Asylum	3,200	4,200	3,900	3,900	3,900	15,800	3,500
Managed Migration	7,800	9,700	8,000	9,400	10,400	37,600	6,900
Entry Clearance	16,100	7,400	7,300	9,300	9,200	33,200	5,200
Family Visit Visa	14,100	12,600	16,800	10,200	9,700	49,400	11,000
Deport and others	290	190	210	280	260	940	180

Source: Immigration and Asylum Quarterly and Annual Reconciled Returns

Figures may not add to totals because of rounding

. Not applicable

.. Not available

- Small Value

0 Nil

(r) Revised data

(p) Provisional data

¹ The Tribunals Service Immigration and Asylum (IA), consisting of 'First Tier Tribunal Immigration and Asylum Chamber' and 'Upper Tribunal Immigration and Asylum Chamber' (FTTIAC and UTIAC), replaced the Asylum and Immigration Tribunal (AIT) on 15 February 2010. Figures for 2010-11 relate to appeals dealt with by Immigration Judges at the FTTIAC. Figures for 2009-10 relate to appeals dealt with by Immigration Judges at the AIT or FTTIAC.

Table 1.1c Social Security and Child Support Receipts by Quarter and Benefit Type

Benefit	Number						
	2009-10	2010-11					2011-12
	Q1	Q1	Q2	Q3	Q4	Annual Total	Q1
Attendance Allowance	790	870	1,100	1,100	1,100	4,200	950
Disability Living Allowance	15,900	17,300	21,000	21,400	19,900	79,400	17,800
Bereavement Benefit	140	120	110	140	120	500	140
Carer's Allowance	260	310	440	420	460	1,600	510
Child Benefit Lone Parent	340	340	640	480	500	1,900	330
Child Support Allowance	1,100	940	930	920	940	3,700	820
Tax Credits	390	710	720	670	930	3,000	880
Credits (Other)	0	0	-	-	-	5	-
COEG	-	-	-	-	0	-	0
Compensation Recovery Unit	83	75	87	100	100	370	96
Housing/Council Tax	3,100	3,100	3,300	3,000	3,000	12,300	2,700
Disability Working Allowance	-	0	0	-	0	-	0
Employment Support Allowance	10,100	46,000	55,700	44,800	50,800	197,400	42,900
Health in Pregnancy Grant	0	120	93	50	130	390	80
Home Responsibilities Protection	-	7	6	-	9	25	-
Incapacity Benefit	14,200	9,400	9,100	8,000	7,700	34,300	3,600
Income Support	3,900	3,900	4,000	4,000	3,100	15,100	2,600
Industrial Death Benefit	0	-	0	0	0	-	-
Industrial Injuries Disablement Benefit	1,700	2,600	2,200	2,300	2,100	9,200	1,400
Job Seekers Allowance	6,900	8,800	11,500	12,900	13,800	47,000	12,700
Lookalikes	0	-	-	-	-	8	-
Maternity Benefit/Allowances	67	57	71	57	48	230	51
Others (Extinct/rare Benefits)	16	37	58	33	16	140	18
Penalty Proceedings	0	-	0	0	-	-	0
Pensions credit	400	330	360	390	530	1,600	570
Retirement Pension	250	220	190	270	280	960	190
Severe Disablement Benefit/Allowance	33	26	23	42	39	130	28
Social Fund	1,400	1,300	1,000	1,200	1,400	4,800	1,600
Vaccine Damage Appeals	0	-	-	-	-	7	-
Total	61,100	96,500	112,600	102,500	106,900	418,500	90,000

Source: SSCS Quarterly and Annual Reconciled Returns

Figures may not add to totals because of rounding

- . Not applicable
- .. Not available
- Small Value

0 Nil

- (r) Revised data
- (p) Provisional data

Table 1.2 Tribunals Disposals by Quarter and Jurisdiction

	2009-10		2010-11				2011-12
	Q1	Q1	Q2	Q3	Q4	Annual Total	Q1
Tribunals Overall	144,200	163,600	180,300	172,300	198,300	714,500	180,200
First Tier Tribunal (Immigration and Asylum Chamber) ¹	46,300	37,100	40,900	37,800	38,800	154,700	33,600
Employment Appeal ²	160	470	470	600	450	2,000	570
Employment ³	24,900	30,700	31,700	25,700	34,800	122,800	25,800
Singles	14,100	16,400	15,600	14,600	16,300	62,900	13,800
Multiples	10,800	14,300	16,000	11,000	18,500	59,900	11,900
Social Security and Child Support	62,100	81,800	93,000	95,300	110,100	380,200	107,200
Mental Health	5,700	6,200	6,900	6,500	7,000	26,600	7,100
Adjudicator to HM Land Registry	470	460	350	410	410	1,600	350
Asylum Support	470	1,400	1,200	870	720	4,200	510
Care Standards	51	37	46	32	27	140	33
Charities	-	-	-	-	-	8	-
Claims Management Services	0	-	0	-	0	-	5
Consumer Credit Appeals	-	-	0	-	-	9	-
Criminal Injuries Compensation	640	840	960	810	960	3,600	680
Environmental Jurisdiction	.	0	0	0	0	0	0
Estate Agents Appeals	-	-	-	0	0	-	0
Financial Services and Markets & Pensions Regulator ⁴	6	13	6	-	0	23	5
First Tier Tribunal (Immigration Services)	-	-	-	-	-	7	-
Gambling Appeals	0	0	0	-	-	-	-
Gender Recognition Panel	71	61	80	85	90	320	58
Information Rights	31	41	61	41	52	200	52
Lands	170	310	400	430	610	1,800	160
Local Government Standards in England	13	14	16	18	9	57	6
Pensions Regulator ⁴	0	-	0	0	0	-	.
Primary Health Lists	16	28	24	28	29	110	33
Reserve Forces Appeals	0	-	-	-	-	11	-
Special Commissioners (Income Tax)
Special Educational Needs and Disability	710	700	760	690	800	2,900	1,000
Tax first tier	810	1,500	1,600	1,500	1,600	6,100	1,300
Transport	200	150	130	140	120	540	130
Upper Tribunal (Administrative Appeals Chamber)	920	1,200	1,200	850	1,100	4,400	1,100
VAT and Duties
War Pensions and Armed Forces Compensation	550	580	580	480	550	2,200	600

Source: Tribunals Quarterly and Annual Reconciled Returns

Figures may not add to totals because of rounding

- . Not applicable
- .. Not available
- Small Value

0 Nil

- (r) Revised data
- (p) Provisional data

¹ The Tribunals Service Immigration and Asylum (IA), consisting of 'First Tier Tribunal Immigration and Asylum Chamber' and 'Upper Tribunal Immigration and Asylum Chamber' (FTTIAC and UTIAC), replaced the Asylum and Immigration Tribunal (AIT) on 15 February 2010. Figures for 2010-11 relate to appeals dealt with by Immigration Judges at the FTIAC. Figures for 2009-10 relate to appeals dealt with by Immigration Judges at the AIT or FTIAC.

² Prior to 2010-11 EAT disposals exclude appeals rejected, struck out or withdrawn prior to registration.

From Q1 2010-11 onwards, disposals include appeals rejected, struck out or withdrawn prior to registration

³ Employment Tribunal disposals for 2010-11 may include a small undercount due to a change of computer system during the year

⁴ Pensions Regulator is combined with Financial Services & Markets from Q1 2011-12. Part of Upper Tribunal (Tax and Chancery Chamber).

Table 1.2a Employment Tribunals Disposals by Quarter and Jurisdiction

	JURISDICTIONS DISPOSED						Number
	2010-11 ¹					2011-12	
	Q1	Q2	Q3	Q4	Annual Total	Q1	
Unfair dismissal	12,900	11,800	10,600	14,300	49,600	11,100	
Unauthorised deductions (Formerly Wages Act)	9,200	9,300	8,700	11,000	38,200	8,000	
Breach of contract	8,700	7,600	7,000	8,500	31,800	7,100	
Redundancy pay	4,400	3,100	2,900	3,700	14,100	3,000	
Sex discrimination	3,700	3,000	3,700	5,100	15,600	3,800	
Race discrimination	1,200	1,200	1,200	1,300	4,900	1,100	
Disability discrimination	1,700	1,600	1,600	1,900	6,800	1,700	
Religious belief discrimination	220	200	190	240	850	200	
Sexual orientation discrimination	150	170	160	180	660	140	
Age discrimination	910	740	710	1,300	3,700	1,200	
Working time	6,700	5,700	5,200	6,500	24,100	5,300	
Equal pay	7,000	5,000	4,900	8,800	25,600	4,800	
National minimum wage	130	130	93	250	600	140	
Others	6,200	9,700	5,400	6,100	27,400	5,300	
All	63,100	59,100	52,500	69,300	244,000	53,000	

	WITHDRAWN										Number/Percentage	
	2010-11 ¹									2011-12		
	Q1	Q2	Q3	Q4	Annual Total	Q1	Q2	Q3	Q4	Annual Total	Q1	
Unfair dismissal	3,300	25	2,900	25	2,400	22	3,700	26	12,300	25	2,900	26
Unauthorised deductions (Formerly Wages Act)	2,700	29	2,900	31	3,100	36	4,000	36	12,600	33	2,300	29
Breach of contract	2,100	24	1,600	21	1,500	21	2,100	24	7,300	23	1,700	24
Redundancy pay	1,300	30	700	23	610	21	1,100	29	3,700	27	750	25
Sex discrimination	1,200	33	1,200	41	2,200	59	2,900	57	7,600	49	1,100	29
Race discrimination	340	27	340	29	330	28	350	27	1,400	28	330	30
Disability discrimination	520	31	490	31	510	31	560	29	2,100	31	520	31
Religious belief discrimination	68	31	66	33	52	27	62	26	250	29	61	31
Sexual orientation discrimination	46	30	53	32	47	30	59	32	210	31	38	27
Age discrimination	290	32	250	34	220	31	700	54	1,500	40	770	64
Working time	1,900	28	1,500	26	1,100	21	1,800	28	6,300	26	1,300	25
Equal pay	3,700	53	2,900	58	3,500	72	5,100	59	15,300	60	2,000	41
National minimum wage	20	15	34	27	20	22	43	17	120	20	28	20
Others	2,000	32	1,700	18	1,800	34	2,100	35	7,700	28	1,400	26
All	19,500	31	16,700	28	17,400	33	24,600	36	78,300	32	15,200	29

	ACAS CONCILIATED										Number/Percentage	
	2010-11 ¹									2011-12		
	Q1	Q2	Q3	Q4	Annual Total	Q1	Q2	Q3	Q4	Annual Total	Q1	
Unfair dismissal	5,500	42	4,900	42	4,800	45	5,400	38	20,500	41	4,400	40
Unauthorised deductions (Formerly Wages Act)	2,800	30	3,000	32	2,200	25	2,500	23	10,400	27	2,100	26
Breach of contract	2,600	30	2,400	32	2,500	35	2,700	32	10,300	32	2,200	31
Redundancy pay	680	16	600	19	660	23	620	17	2,600	18	540	18
Sex discrimination	1,500	40	1,100	37	660	18	1,100	21	4,300	28	1,400	36
Race discrimination	470	38	410	34	410	35	460	36	1,700	36	420	37
Disability discrimination	770	46	700	45	730	45	920	48	3,100	46	750	45
Religious belief discrimination	82	38	61	30	60	31	86	36	290	34	71	36
Sexual orientation discrimination	67	44	71	43	56	36	72	39	270	41	56	40
Age discrimination	350	38	290	40	280	39	380	29	1,300	35	270	23
Working time	1,700	26	1,600	29	1,700	33	2,000	30	7,100	29	1,700	31
Equal Pay	1,300	18	1,100	22	180	4	490	6	3,000	12	1,900	40
National minimum wage	59	45	46	36	38	41	54	22	200	33	45	33
Others	1,700	27	1,500	16	1,500	27	1,600	26	6,300	23	1,500	28
All	19,500	31	17,900	30	15,700	30	18,300	26	71,400	29	17,300	33

Figures may not add to totals because of rounding

¹ Figures for 2010-11 exclude a small proportion of cases due to a change of computer system during the year.

	STRUCK OUT (NOT AT A HEARING)										Numbers/Percentage	
	2010-11 ¹									2011-12		
	Q1	Q2	Q3	Q4	Annual Total	Q1	Q2	Q3	Q4	Annual Total	Q1	
Unfair dismissal	1,200	9	900	8	830	8	2,400	17	5,400	11	1,000	9
Unauthorised deductions (Formerly Wages Act)	930	10	680	7	920	11	910	8	3,400	9	890	11
Breach of contract	520	6	690	9	600	9	890	10	2,700	8	610	9
Redundancy pay	240	5	310	10	380	13	470	13	1,400	10	330	11
Sex discrimination	640	17	420	14	610	16	810	16	2,500	16	1,000	27
Race discrimination	110	9	120	10	130	11	150	12	500	10	90	8
Disability discrimination	120	7	120	7	110	7	160	8	510	7	120	7
Religious belief discrimination	12	6	23	12	26	14	32	14	93	11	19	10
Sexual orientation discrimination	14	9	14	8	24	15	18	10	70	11	11	8
Age discrimination	110	12	67	9	80	11	98	8	350	10	45	4
Working time	330	5	490	9	460	9	590	9	1,900	8	500	9
Equal pay	2,000	28	920	19	1,200	24	1,300	14	5,300	21	890	18
National minimum wage	11	8	4	3	8	9	14	6	37	6	14	10
Others	350	6	390	4	250	5	430	7	1,400	5	510	10
All	6,500	10	5,200	9	5,600	11	8,300	12	25,500	10	6,000	11

Table 1.2a Employment Tribunal Disposals by Quarter and Jurisdiction

Number/Percentage

	SUCCESSFUL AT TRIBUNAL							Number/Percentage				
	2010-11 ¹						2011-12					
	Q1	Q2	Q3	Q4	Annual Total	Q1						
Unfair dismissal	1,100	8	1,100	10	970	9	990	7	4,200	8	1,100	10
Unauthorised deductions (Formerly Wages Act)	1,200	14	1,200	13	1,200	14	1,800	16	5,400	14	1,000	13
Breach of contract	1,800	21	1,200	16	1,200	17	1,200	14	5,400	17	1,100	15
Redundancy pay	1,300	29	710	23	560	20	690	19	3,200	23	640	21
Sex discrimination	87	2	53	2	68	2	80	2	290	2	68	2
Race discrimination	35	3	35	3	42	4	36	3	150	3	35	3
Disability discrimination	39	2	54	3	56	3	42	2	190	3	47	3
Religious belief discrimination	7	3	8	4	3	2	9	4	27	3	14	7
Sexual orientation discrimination	7	5	2	1	4	3	9	5	22	3	12	9
Age discrimination	39	4	18	2	17	2	16	1	90	2	15	1
Working time	1,600	23	940	16	940	18	960	15	4,400	18	860	16
Equal pay	21	0	30	1	8	0	220	2	280	1	4	0
National minimum wage	19	15	24	19	13	14	19	8	75	13	18	13
Others	1,000	17	1,200	12	1,100	21	1,100	18	4,400	16	1,200	22
All	8,300	13	6,600	11	6,200	12	7,100	10	28,100	12	6,000	11

Number/Percentage

	DISMISSED AT A PRELIMINARY HEARING							Number/Percentage				
	2010-11 ¹						2011-12					
	Q1	Q2	Q3	Q4	Annual Total	Q1						
Unfair dismissal	400	3	350	3	290	3	350	2	1,400	3	310	3
Unauthorised deductions (Formerly Wages Act)	130	1	180	2	150	2	210	2	670	2	140	2
Breach of contract	200	2	200	3	170	2	210	2	770	2	190	3
Redundancy pay	48	1	50	2	37	1	67	2	200	1	67	2
Sex discrimination	59	2	52	2	40	1	47	1	200	1	52	1
Race discrimination	57	5	77	6	61	5	61	5	260	5	60	5
Disability discrimination	44	3	48	3	59	4	52	3	200	3	60	4
Religious belief discrimination	16	7	7	4	17	9	13	6	53	6	11	6
Sexual orientation discrimination	4	3	6	4	4	3	8	4	22	3	5	4
Age discrimination	33	4	27	4	31	4	29	2	120	3	26	2
Working time	150	2	140	2	100	2	140	2	530	2	110	2
Equal pay	11	0	7	0	6	0	12	0	36	0	27	1
National minimum wage	0	0	2	2	6	6	3	1	11	2	4	3
Others	180	3	83	1	140	3	110	2	520	2	120	2
All	1,300	2	1,200	2	1,100	2	1,300	2	5,000	2	1,200	2

Number/Percentage

	UNSUCCESSFUL AT HEARING							Number/Percentage				
	2010-11 ¹						2011-12					
	Q1	Q2	Q3	Q4	Annual Total	Q1						
Unfair dismissal	1,300	10	1,200	10	1,200	11	1,100	8	4,800	10	1,100	10
Unauthorised deductions (Formerly Wages Act)	510	6	490	5	520	6	610	6	2,100	6	770	10
Breach of contract	610	7	560	7	510	7	590	7	2,300	7	560	8
Redundancy pay	190	4	140	4	170	6	190	5	680	5	170	5
Sex discrimination	170	5	140	4	120	3	160	3	590	4	170	5
Race discrimination	210	17	200	16	180	16	210	16	800	16	180	16
Disability discrimination	160	9	150	10	160	10	180	9	640	9	170	10
Religious belief discrimination	29	13	35	18	29	15	30	13	120	15	21	11
Sexual orientation discrimination	12	8	19	12	17	11	14	8	62	9	18	13
Age discrimination	88	10	79	11	80	11	68	5	320	9	65	5
Working time	380	6	290	5	360	7	350	5	1,400	6	320	6
Equal pay	31	0	16	0	16	0	1,700	19	1,700	7	12	0
National minimum wage	12	9	11	9	2	2	110	43	130	22	22	16
Others	370	6	4,500	46	320	6	510	8	5,700	21	410	8
All	4,000	6	7,800	13	3,600	7	5,800	8	21,200	9	4,000	8

Figures may not add to totals because of rounding

Number/Percentage

	DEFAULT JUDGMENT							Number/Percentage				
	2010-11 ¹						2011-12					
	Q1	Q2	Q3	Q4	Annual Total	Q1						
Unfair dismissal	280	2	340	3	230	2	350	2	1,200	2	320	3
Unauthorised deductions (Formerly Wages Act)	920	10	970	10	670	8	1,000	9	3,600	9	800	10
Breach of contract	870	10	870	11	610	9	850	10	3,200	10	730	10
Redundancy pay	630	14	580	19	440	15	590	16	2,200	16	550	18
Sex discrimination	26	1	16	1	22	1	23	0	87	1	18	0
Race discrimination	11	1	7	1	11	1	19	1	48	1	9	1
Disability discrimination	13	1	4	0	10	1	21	1	48	1	8	0
Religious belief discrimination	3	1	0	0	5	3	4	2	12	1	2	1
Sexual orientation discrimination	2	1	0	0	4	3	3	2	9	1	0	0
Age discrimination	2	0	5	1	3	0	11	1	21	1	9	1
Working time	670	10	730	13	510	10	700	11	2,600	11	550	10
Equal pay	5	0	1	0	0	0	1	0	7	0	1	0
National minimum wage	9	7	7	5	6	6	8	3	30	5	7	5
Others	570	9	280	3	290	5	230	4	1,400	5	270	5
All	4,000	6	3,800	6	2,800	5	3,800	5	14,400	6	3,300	6

Source: Tribunals Quarterly and Annual Reconciled Returns

¹ Figures for 2010-11 exclude a small proportion of cases due to a change of computer system during the year.

Table 1.2b Immigration and Asylum Disposals by Quarter and Case Type

	2009-10		2010-11				2011-12	Number
	Q1	Q1	Q2	Q3	Q4	Annual Total	Q1	
First Tier Tribunal (Immigration and Asylum Chamber)	46,300	37,100	40,900	37,800	38,800	154,700	33,600	
Asylum	2,800	4,700	4,600	3,900	4,000	17,100	3,800	
Managed Migration	8,000	10,400	13,100	10,800	10,900	45,200	9,700	
Entry Clearance	21,300	7,900	8,200	8,400	8,200	32,700	8,800	
Family Visit Visa	14,000	13,900	14,900	14,600	15,300	58,600	11,000	
Deport and others	260	230	280	230	310	1,100	280	

Source: Immigration and Asylum Quarterly and Annual Reconciled Returns

Figures may not add to totals because of rounding

. Not applicable

.. Not available

- Small Value

0 Nil

(r) Revised data

(p) Provisional data

Table 1.2c Social Security and Child Support Disposals by Quarter and Benefit Type

Benefit	2009-10		2010-11				2011-12	Number
	Q1	Q1	Q2	Q3	Q4	Annual Total	Q1	
Attendance Allowance	880	850	860	850	1,000	3,600	1,100	
Disability Living Allowance	17,500	15,600	16,300	15,100	18,200	65,100	19,700	
Bereavement Benefit	120	110	100	110	150	480	120	
Carer's Allowance	320	220	340	370	400	1,300	430	
Child Benefit Lone Parent	450	350	450	480	510	1,800	460	
Child Support Allowance	1,200	860	870	860	990	3,600	920	
Tax Credits	320	510	700	730	860	2,800	840	
Credits (Other)	0	0	0	-	-	-	-	
COEG	0	0	0	0	-	-	-	
Compensation Recovery Unit	96	71	79	100	88	340	89	
Housing/Council Tax benefit	3,300	2,800	3,100	3,100	3,300	12,300	2,900	
Disability Working Allowance	0	0	0	-	-	-	0	
Employment Support Allowance	2,300	35,500	42,700	45,900	52,500	176,600	51,000	
Health in Pregnancy Grant	0	160	130	83	120	480	100	
Home Responsibilities Protection	-	7	11	-	10	30	7	
Incapacity Benefit	19,500	10,100	9,500	8,400	9,400	37,400	8,600	
Income Support	5,300	3,500	3,900	4,100	4,300	15,700	3,400	
Industrial Death Benefit	0	-	-	0	0	-	0	
Industrial Injuries Disablement Benefit	1,700	1,900	2,100	2,000	2,100	8,100	2,100	
Job Seekers Allowance	6,900	7,700	10,000	11,400	14,000	43,100	13,100	
Lookalikes	0	-	-	0	-	6	-	
Maternity Benefit/Allowances	65	58	69	60	47	230	65	
Others (Extinct/rare Benefits)	23	18	15	28	18	79	21	
Penalty Proceedings	0	0	0	-	0	-	0	
Pensions Credit	430	360	390	430	480	1,700	530	
Retirement Pension	260	190	190	210	270	870	230	
Severe Disablement Benefit/Allowance	41	27	27	36	28	120	30	
Social Fund	1,400	1,000	1,200	1,000	1,300	4,500	1,300	
Vaccine Damage Appeals	-	0	-	-	-	8	-	
Total	62,100	81,800	93,000	95,300	110,100	380,200	107,200	

Source: SSCS Quarterly and Annual Reconciled Returns

Figures may not add to totals because of rounding

. Not applicable

.. Not available

- Small Value

0 Nil

(r) Revised data

(p) Provisional data

Table 1.2e Immigration and Asylum Outcomes by Quarter and Case Type ¹

	Number/Percentage					
	2009-10					
	Q1					
	Allowed No.	%	Dismissed No.	%	Withdrawn No.	%
First Tier Tribunal (Immigration and Asylum Chamber)	17,500	38	25,400	55	3,400	7
Asylum	720	26	1,900	69	140	5
Managed Migration	4,000	50	3,400	42	590	7
Entry Clearance	7,400	35	12,300	58	1,600	8
Family Visit Visa	5,300	38	7,600	54	1,100	8
Deport and others	56	22	180	69	23	9

	Number/Percentage																																			
	2010-11						2010-11						2010-11						Annual Total			2011-12														
	Q1		Q2		Q3		Q4		Q1		Q2		Q3		Q4		Allowed No.	Dismissed No.	Withdrawn No.	Q1		Q2		Q3												
	Allowed No.	%	Dismissed No.	%	Withdrawn No.	%	Allowed No.	%	Dismissed No.	%	Withdrawn No.	%	Allowed No.	%	Dismissed No.	%	Withdrawn No.	%	Allowed No.	%	Dismissed No.	%	Withdrawn No.	%												
First Tier Tribunal (Immigration and Asylum Chamber)	15,500	42	17,900	48	3,800	10	17,000	42	17,700	43	6,200	15	14,800	39	15,700	42	7,300	19	15,500	40	16,800	43	6,400	17	62,800	41	68,100	44	23,800	15	13,000	39	14,800	44	5,800	17
Asylum	1,300	27	3,200	67	270	6	1,200	26	3,100	67	280	6	1,000	27	2,600	66	280	7	1,100	27	2,700	67	250	6	4,600	27	11,400	67	1,100	6	1,000	26	2,500	64	360	9
Managed Migration	4,400	42	5,000	48	1,000	10	7,000	54	4,700	36	1,300	10	5,800	54	4,000	37	1,000	10	5,600	51	4,200	38	1,200	11	22,800	50	17,800	39	4,600	10	4,800	50	3,900	41	920	10
Entry Clearance	3,400	44	3,300	41	1,200	15	3,300	40	3,100	38	1,700	21	3,000	36	3,000	36	2,400	28	3,000	36	2,900	36	2,400	29	12,700	39	12,300	38	7,700	23	3,300	38	3,100	36	2,400	27
Family Visit Visa	6,300	45	6,300	45	1,300	9	5,400	36	6,600	45	2,800	19	4,900	34	6,100	42	3,600	25	5,800	38	6,900	45	2,700	17	22,400	38	25,900	44	10,400	18	3,800	34	5,100	47	2,100	19
Deport and others	60	26	150	64	22	10	81	29	170	61	28	10	50	21	160	70	21	9	92	29	200	62	26	8	280	27	680	64	97	9	63	23	180	66	30	11

Figures may not add to totals because of rounding
 . Not applicable
 .. Not available
 - Small Value

0 Nil
 (r) Revised data
 (p) Provisional data

¹ Figures are based upon decisions at a hearing and on papers.

Source: Immigration and Asylum Quarterly and Annual Reconciled Returns

Table 1.3 Tribunals Caseload Outstanding¹ by Quarter and Jurisdiction

	2009-10		2010-11			Number
	Q1	Q1 ³	Q2 ³	Q3 ³	Q4	Q1
Tribunals	484,200	658,000	706,500	722,700^r	751,600^r	750,000
First Tier Tribunal (Immigration and Asylum Chamber)	84,400	52,300	50,300	45,000	42,400	34,500
Employment Appeal ²	..	360	380	400	370	310
Employment ³	306,900	416,600	442,700	453,600	484,300	503,100
Singles	33,100	31,600	30,500	31,400	28,500	28,700
Multiples	273,800	385,000	412,100	422,200	455,800	474,300
Social Security and Child Support	68,500	158,400	182,600	193,400	194,200	179,700
Mental Health	5,100	4,700	4,800	4,300	4,500	4,300
Adjudicator to HM Land Registry	1,500	1,500	1,400	1,300	1,200	1,300
Asylum Support	97	270	150	160	140	150
Care Standards	110	110	110	58	45	37
Charities	-	0	-	-	-	-
Claims Management Services	-	-	-	-	5	-
Consumer Credit Appeals	-	6	7	8	8	10
Criminal Injuries Compensation	2,600	2,800	2,500	2,300	2,200 ^r	2,200
Environmental Jurisdiction	.	0	0	0	0	0
Estate Agents Appeals	0	-	0	0	0	0
Financial Services and Markets & Pensions Regulator ⁴	17	24	35	470	710	1,200
First Tier Tribunals (Immigration Services)	-	-	-	-	-	-
Gambling Appeals	-	-	-	-	-	-
Gender Recognition Panel	86	110 ^r	120	110	78 ^r	100
Information Rights	39	120	98	95	130	120
Lands	1,400	1,600	1,400	1,100	640	590
Local Government Standards in England	16	15	14	5	6	8
Pensions Regulator ⁴	-	-	5	8	8	.
Primary Health Lists	-	37	37	43	42	32
Reserve Forces Appeals	-	-	0	-	-	0
Special Commissioners (Income Tax)
Special Educational Needs and Disability	1,300	1,300	1,400	1,400	1,000	1,300
Tax first tier	10,100	15,600	16,300	16,700	17,600	19,200
Transport	170	120	120	120	120	90
Upper Tribunal (Administrative Appeals Chamber)	930	1,200	1,100	1,200	1,100	1,100
VAT and Duties
War Pensions and Armed Forces Compensation	940	1,000	980	1,000	950	790

Source: Tribunals Quarterly and Annual Reconciled Returns

Figures may not add to totals because of rounding

. Not applicable

.. Not available

- Small Value

0 Nil

(r) Revised data

(p) Provisional data

¹ As on the last day of the period

² Registered appeals outstanding. (These figures do not include potential appeals received)

³ The Employment Tribunal caseload outstanding for the first and second quarters of 2010-11 only have a partial caseload for Nottingham and Leicester (see Explanatory Notes) and Nottingham and Leicester caseload outstanding in Q3 2010-11 may be incomplete.

⁴ Pensions Regulator is combined with Financial Services & Markets from Q1 2011-12. Part of Upper Tribunal (Tax and Chancery Chamber).

Table 1.4 Tribunals Timeliness Measures by Quarter and Jurisdiction

			Percentage						
			2009-10	2010-11				2011-12	
	Description of measure	Period	Q1	Q1	Q2	Q3	Q4	Annual	Q1
TRIBUNALS OVERALL PI	The percentage of applications dealt with in target time	Pre 04/2010	61
TRIBUNALS OVERALL PI	The percentage of applications dealt with in target time	Post 04/2010	.	52	49	52	50	51	51
First Tier Tribunal (Immigration and Asylum Chamber)	Receipt/Bundle Receipt in AIT/TSEA to promulgation ² by an Immigration Judge (all cases)	Pre 04/2010	51
First Tier Tribunal (Immigration and Asylum Chamber)	Receipt in IA to promulgation by an immigration judge (all cases)	Post 04/2010	.	55	52	60	61	57	69
Asylum	Asylum cases, percentage promulgated in 6 weeks	No Change	69	58	59	57	58	58	60
Managed Migration	Managed migration cases, percentage promulgated within 8 weeks	No Change	65	25	24	34	49	33	58
Entry Clearance	Entry clearance cases, percentage promulgated within 10 weeks from receipt of the respondent's bundle	Pre 04/2010	42
Family Visit Visa	Family visitor cases, percentage promulgated within 10 weeks from receipt of the respondent's bundle	Pre 04/2010	51
Entry Clearance	Entry clearance, percentage within 30 weeks from receipt to promulgation	Post 04/2010	.	70	68	70	71	70	75
Family Visit Visa	Family visitor, percentage within 25 weeks from receipt to promulgation	Post 04/2010	.	68	65	76	66	69	78
Employment Appeal	The percentage of appeals where the first substantive hearing takes place within 26 weeks of registration.	No Change	87	79	77	68	73	74	85
Employment¹	The percentage of single accepted cases where hearing begins within 26 weeks of receipt	No Change	71	58	59	60	60	59	62
Social Security and Child Support	The percentage of appeals where the first hearing takes place within 14 weeks of the receipt at SSCS	Pre 04/2010	66
	The percentage of appeals where the final outcome is promulgated within 16 weeks of the receipt at SSCS	Post 04/2010	.	48	46	47	45	46	42
Mental Health	Section 2 (Mental Health Act 1983) cases that are listed for hearing within 7 days of receipt (statutory target)	No Change	95	97	99.5	99.9	99.7	99	99.9
	The percentage of non-restricted cases disposed of within 9 weeks of receipt	Post 04/2010	.	53	50	47	55	51	66
	The percentage of Restricted Patient cases disposed of within 17 weeks of receipt	Post 04/2010	.	63	66	60	65	64	77
Adjudicator to HM Lands Registry	The percentage of cases disposed ³ of within 70 weeks of receipt	No Change	74	74	68	64	68	69	75
Asylum Support	The percentage of cases to be determined ⁴ within 12 working days of receipt	No Change	100	17	14	38	46	26	78
Care Standards	The percentage of cases disposed of within 40 weeks of receipt	No Change	86	89	74	81	81	81	67
Charities	The percentage of cases disposed of within 30 weeks of receipt	No Change	100	100	100	100	100	100	100
Claims Management Services	The percentage of cases to be disposed of within 50 weeks of receipt	No Change	~	100	~	0	~	33	100
Consumer Credit Appeals	The percentage of cases to be disposed of within 25 weeks of receipt	No Change	50	33	~	0	50	33	50
Criminal Injuries Compensation	The percentage of cases disposed of within 6 months of being ready to list	Pre 04/2010	88
	The percentage of cases disposed of within 6 months of receipt	Post 04/2010	.	69	63	67	55	63	.
	The percentage of cases disposed of within 32 weeks	Post 04/2011	68
Environmental Jurisdiction	The percentage of cases disposed of within 30 weeks	Post 04/2010	.	~	~	~	~	~	~
Estate Agents Appeals	The percentage of cases disposed of within 27 weeks of receipt	No Change	.	0	0	~	~	0	~
Financial Services and Markets & Pensions Regulator⁵	The percentage of cases disposed of within 50 weeks of receipt	No Change	33	54	83	50	~	61	60
First Tier Tribunal (Immigration Services)	The percentage of cases disposed of within 30 weeks of receipt	No Change	100	100	100	100	100	100	100

Table 1.4 Tribunals Timeliness Measures by Quarter and Jurisdiction (continued)

			Percentage						
			2009-10	2010-11				2011-12	
	Description of Measure	Period	Q1	Q1	Q2	Q3	Q4	Annual	Q1
Gambling Appeals	The percentage of cases disposed of within 30 weeks of receipt	No Change	~	~	~	100	0	67	100
Gender Recognition Panel	The percentage of cases disposed of within 20 weeks of receipt	No Change	82	77	71	74	79	76	76
Information Rights	The percentage of cases disposed of within 30 weeks of receipt	No Change	68	85	67	73	73	74	83
Lands	The percentage of cases disposed of within 50 weeks of registration	Pre 04/2010	75
	Cat 1 The percentage of cases disposed of in 24 weeks of registration	Post 04/2010	.	97	94	83	88	90	93
	Cat 2 The percentage of cases disposed of in 70 weeks of registration	Post 04/2010	.	77	49	32	26	41	66
Local Government Standards in England	The percentage of cases where a decision was issued within 16 weeks of receipt of the reference	Pre 04/2010	100
	The percentage of appeals to be held and determined within 16 weeks of receipt.	Post 04/2010	.	89	82	60	80	77	100
Pensions Regulator⁵	The percentage of cases disposed of within 50 weeks of receipt	No Change	~	100	~	~	~	100	.
Primary Health Lists	The percentage of cases where the decision was issued within 16 weeks of receipt of reference	No Change	.	79	67	79	72	74	39
Reserve Forces Appeals	The percentage of determinations (from hearing to judgement) issued within 4 weeks	No Change	~	100	~	100	100	100	100
	The percentage of claims served (accepted) within 5 days	Post 04/2010	.	100	100	100	100	100	0
Special Commissioners (Income Tax)	The percentage of cases disposed of within 50 weeks of receipt	Pre 04/2010
Special Educational Needs and Disability	The percentage of cases disposed of within 22 weeks of receipt	No Change	74	83	88	82	81	84	75
Tax first tier	The percentage of standard/complex cases disposed of within 70 weeks of receipt	No Change	40	56	61	60	56	58	57
	The percentage of paper cases disposed of in 20 weeks	Post 04/2010	.	67	66	84	76	73	88
	The percentage of basic cases disposed of in 20 weeks	Post 04/2010	.	62	69	77	86	74	75
Transport	The percentage of cases disposed of within 16 weeks of receipt	No Change	98	90	87	84	91	88	80
Upper Tribunal (Administrative Appeals Chamber)	The percentage of all work disposed of within 30 weeks of receipt	Pre 04/2010	91
	The percentage of appeals disposed of within 20 weeks of receipt	Post 04/2010	.	49	55	60	51	53	45
	The percentage of applications for Leave to Appeal to be disposed within 10 weeks of receipt	Post 04/2010	.	62	56	62	47	57	43
VAT and Duties	The percentage of Category 1 and 3 cases disposed of within 90 weeks of receipt	Pre 04/2010
	The percentage of Category 2 cases disposed of within 35 weeks of receipt	Pre 04/2010
War Pensions and Armed Forces Compensation	The percentage of cases disposed of within 20 weeks of receipt	No Change	77	56	58	50	48	53	57

Source: Tribunals Quarterly Reconciled Returns

Figures may not add to totals because of rounding
 . Not applicable
 .. Not available
 - Small Value
 ~ No cases dealt with so KPI could not be calculated

0 Nil
 (r) Revised data
 (p) Provisional data

¹ A small number of cases for the Employment Tribunal may be excluded from the 2010-11 figures due to a change of computer system during the year
² Promulgation is the formal publication of the decision
³ A case is considered to be disposed of when a decision has been made on the case and all work on the case has been completed
⁴ A case is considered to be determined when a decision has been made on the case
⁵ Pensions Regulator is combined with Financial Services & Markets from Q1 2011-12. Part of Upper Tribunal (Tax and Chancery Chamber).