

Naval Service Quarterly Pocket Brief

January 2013

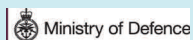
Produced by DASA (Navy)

223, MP 2.1
West Battery
Whale Island
Portsmouth
PO2 8DX



Telephone: 02392 625955

N.B. Sum of parts may not equal totals due to rounding



2. Strength Against Liability at 1 January 2013

	Total Strength	Officers		Ratings	
		RN	RM	RN	RM
Regular Trained Strength	31,680	5,440	770	19,400	6,070
Full Time Reservists (FTRS) "Regular"	140	50	10	60	20
Liability ¹	31,600	5,270	720	19,450	6,170
Surplus/Deficit ²	220	220	60	10	(70)
Untrained Strength	2,610	730	50	1,000	840
Full Time Reservists (FTRS) "Non-Regular"	240	40	~	170	30
Total Regular Trained & Untrained Strength	34,290	6,160	820	20,400	6,910

	Total Trained and Untrained Strength	Trained Strength	FTRS "Regular"	Historic Liability ¹	Surplus/Deficit ²	Untrained Strength	FTRS "Non-Regular"
01-Apr-12	35,540	33,190	100	34,800	(1,510)	2,360	260
01-Apr-11	37,660	35,250	180	35,700	(270)	2,410	250
01-Apr-10	38,730	35,170	330	35,790	(290)	3,560	-
01-Apr-09	38,340	34,400	620	35,760	(740)	3,940	-

¹The latest liability is 1_12 scaled to DP12, provided by DNPS

²Surplus/Deficit = Trained Strength + FTRS "Regular" - Liability.

5. Trained Regular Strength by Branch at 1 January 2013

RN Officers		RN Ratings		RM Officers	
Warfare	2,710	Warfare XR	4,820	GD	760
Engineer	1,710	Warfare SM	810	Band	10
Logistics	510	Logistics	2,750	Career	-
Medical	320	Medical	690	Total	770
Dental	60	Engineering GS	4,220		
Chaplain	60	Engineering SM	2,120		
No Specialisation	-	Warfare Aviation	680		
Family	-	Air Engineering	3,140		
Total	5,370	Careers	-	GD	5,730
		Not Specified	-	Band	340
		Total	19,230	Careers	-
				Total	6,070

RM Other Ranks	
GD	5,730
Band	340
Careers	-
Total	6,070

QARNNS Officers	
	70

QARNNS Ratings	
	170

Royal Navy Total	
Total Officers	6,200
Total Ratings	25,470
Total	31,680

CONTACTS

Produced by:

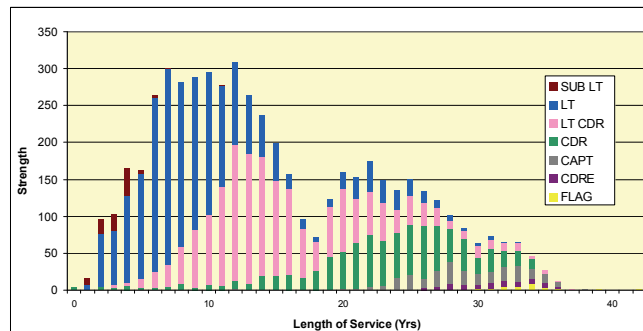
DASA (Navy)
Room 223, MP2.1
West Battery
Whale Island
Portsmouth
PO2 8DX

DASA welcome feedback on our statistical products. If you have any comments or questions about this publication or about DASA statistics in general, you can contact us as follows:

Email DASA-enquiries-mailbox@mod.uk

or visit our website at www.dasa.mod.uk

3. Trained Regular RN Officers by Paid Rank and LOS Since Entry at 1 January 2013



6. Total RN Regular Strength by Gender at 1 January 2013

Officers	Trained			Untrained		
	Male	Female	Total	Male	Female	Total
FLAG OFF	40	-	40	-	-	-
CDRE	70	-	70	-	-	-
CAPT	240	-	240	-	-	-
CDR	880	40	930	-	-	-
LT CDR	1,640	190	1,830	-	-	-
LT	1,900	340	2,240	210	30	240
SUB LT	90	10	100	370	60	430
MID	-	-	-	50	10	60
Total	4,850	590	5,440	630	100	730

Ratings	
WO	540
WO2	500
CPO	2,790
PO	3,070
LDG	4,000
AB	6,300
Total	17,200

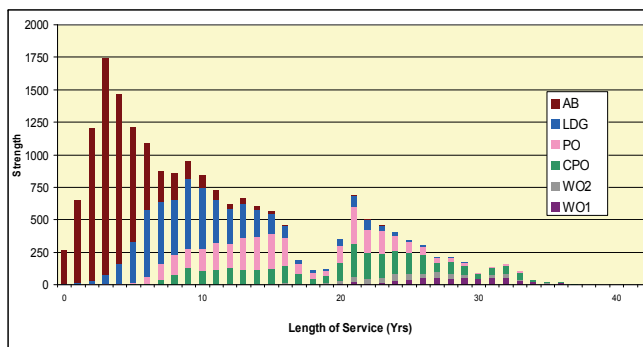
* Please note that - appears where there are 5 individuals or less due to the Data Protection Act 1998

1. Trained Manpower Accounts at 1 January 2013

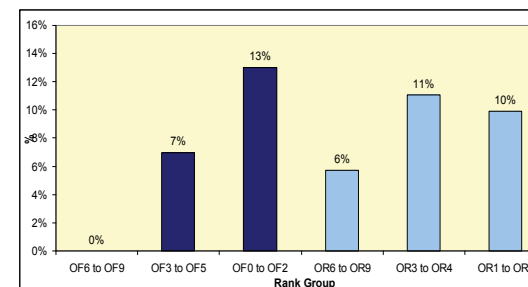
	Trained strength at 1 April 2012	GTS 2012/13	Entrants direct to trained strength 2012/13	Trained to untrained strength 2012/13	Trained wastage 2012/13	(Strength April point + inflow) - outflow	Trained strength at 1 January 2013
Officers	6,370	260	~	-	430	6,200	6,200
Ratings	26,820	1,100	40	-	2,480	25,470	25,470

GTS refers to Gains to Trained Strength and so does not include sideways entrants or trained FTRS intake. Trained FTRS intake are shown as entrants direct to the trained strength.

4. Trained Regular RN Ratings by Paid Rank and LOS Since Entry at 1 January 2013



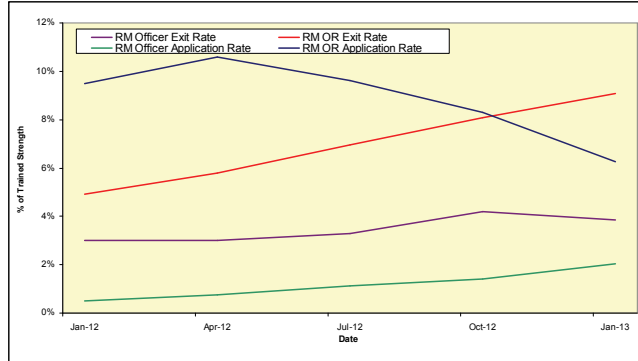
7. UK Regular Naval Service Females as a percentage of each paid rank group at 1 January 2013



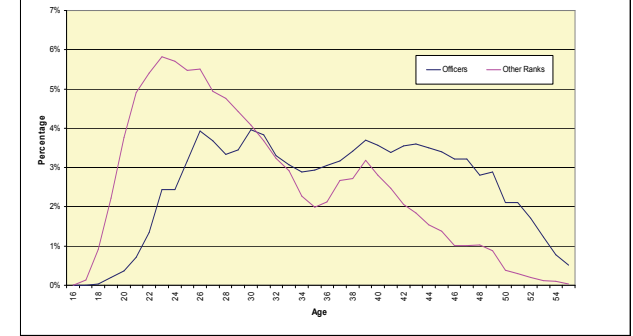
8. RN/RM Top Level Budget Trained Strength at 1 January 2013

Top Level Budget	
Navy Command	25,450
Navy Command Unallocated	~
Land Command	1,060
Air Command	520
Central	4,650
Centre	730
CJO	2,180
DE&S	1,730
Total	31,680

11. RM Voluntary Outflows and Application Rates as % of Trained Strength, 12 Months Ending 31 December 2012



14. Age Distribution - UK Regulars Naval Service 1 April 2012



9. Strength of FTRS and Activated Reservists at 1 January 2013

	Male	Female	Total
Officers			
Royal Navy	100	20	120
FTRS "Regular"	40	10	50
FTRS "Non-Regular"	30	10	40
Activated Reservists	30	10	40
Royal Marines	10	-	10
FTRS "Regular"	10	-	10
FTRS "Non-Regular"	-	-	-
Activated Reservists	-	-	-
Ratings			
Royal Navy	230	20	260
FTRS "Regular"	60	-	60
FTRS "Non-Regular"	150	20	170
Activated Reservists	30	-	30
Royal Marines	50	-	50
FTRS "Regular"	-	-	-
FTRS "Non-Regular"	30	-	30
Activated Reservists	20	-	20

12. Trained VO Applications and Exits 2012/13 to date

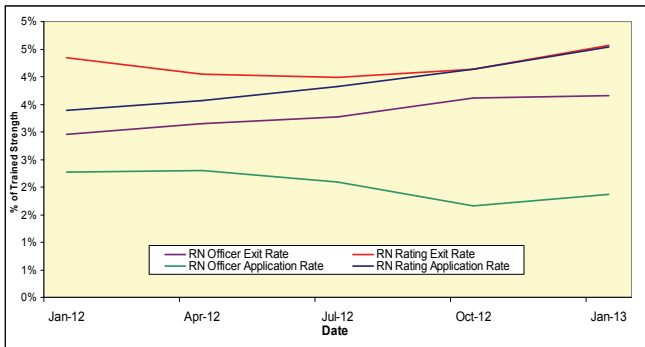
		Royal Navy		Royal Marine	
		Officers	Ratings	Officers	Ratings
VO Apps	Applications	80	700	10	230
	Withdrawals	~	30	-	110
Outflows	Voluntary Outflows	160	730	20	440
	Time Expiry	110	340	20	120
	Other	100	700	20	160
	Total Exits	360	1,770	70	710

15. Intake for 2012/13 to date

	Intake
Total Officers	270
RN	220
From Ranks SUYUY	30
New Entrant/Re-entrant/From Another Service/From Long Term Absentee	190
RM	50
From Ranks SUYUY	-
New Entrant/Re-entrant/From Another Service/From Long Term Absentee	50
Total Ratings	1,850
RN	990
New Entrant/Re-entrant/From Another Service/From Long Term Absentee	990
Re-entrant (From Officer)	-
RM	860
New Entrant/Re-entrant/From Another Service/From Long Term Absentee	860
Re-entrant (From Officer)	-

This table includes entrants to both the untrained and trained strengths

10. RN Voluntary Outflows and Application Rates as % of Trained Strength, 12 Months Ending 31 December 2012



13. Average Age of Substantive Promotions during the 12 months ending 31 December 2012

Royal Navy	Average Age on Promotion	Royal Marines	Average Age on Promotion
LDG	27	CPL	29
PO	33	SGT	34
CPO	35	CSGT	39
WO2	42	WO2	41
WO1	44	WO1	43
LT	28	CAPTAIN RM	28
LT CDR	36	MAJOR	35
CDR	42	LT COLONEL	41
CAPTAIN	47	COLONEL	43
CDRE	49	BRIG	49
REAR ADMIRAL	50	MAJ-GENERAL	~

Please note that ~ appears where there are 5 individuals or less in accordance with Data Protection Act 1998

16. Tri-Service Strength¹ by Ethnic Origin² at 1 January 2013

	Royal Navy	Army	RAF
Total	34,290	99,740	37,460
Ethnic Minorities	1,180	10,100	730
<i>Percentage Ethnic Minority</i>	<i>3.5%</i>	<i>10.2%</i>	<i>2.0%</i>
White	32,670	89,420	35,150
Unknown	440	210	1,580

1. UK Regular Forces comprises trained and untrained personnel and excludes Gurkhas, Full Time Reserve Service personnel and mobilised reservists.

2. Ethnic minority percentage figures are based on those with a known ethnic origin. Percentages are calculated from unrounded data.