

EC Type Examination Certificate Number: **UK/ 0120/ SGS0025**

Elster Metering Systems

Elster Metering Systems
Tollgate Business Park
Beaconside
Stafford
ST16 3HS

Instrument Identification:
AS252 SM1DABD-A

Single Phase, Direct Connected, Credit, Import/Export,
Active/Reactive, Multi Rate, Electricity Meter

Instrument Traceable Number
UK/ 0120/ SGS0025

has been assessed and certified as meeting the requirements of

EC Directive 2004/22/EC **on Measuring Instruments Annex B**

It is certified that the manufacturer's technical design and specimen for the above instrument has been examined and, based on the evidence submitted, it is considered that the instrument conforms to the requirements of MI-003 of EC Directive 2004/22/EC.

This certificate is to be used in conjunction with a certificate covering the product verification as required in Annex D or Annex F.

This certificate is valid for 10 years from 16th October 2008 until 15th October 2018
Issue 3

Certification is based on report number
EMA119532 dated 16th October 2008

Notified Body Number 0120

Authorised Signature
Mr J Weaver



Notified Body
SGS United Kingdom Ltd, 202B Worle Parkway, Weston-super-Mare, BS22 6WA UK
t +44 (0)1934 522917 f +44 (0)1934 522137 www.sgs.com
Contact Address
SGS United Kingdom Ltd, Unit 10, South Industrial Estate, Bowburn, Durham, DH6 5AD UK
t +44 (0)191 377 2000 f +44 (0)191 377 2020 www.sgs.com

EC Type Examination Cert.

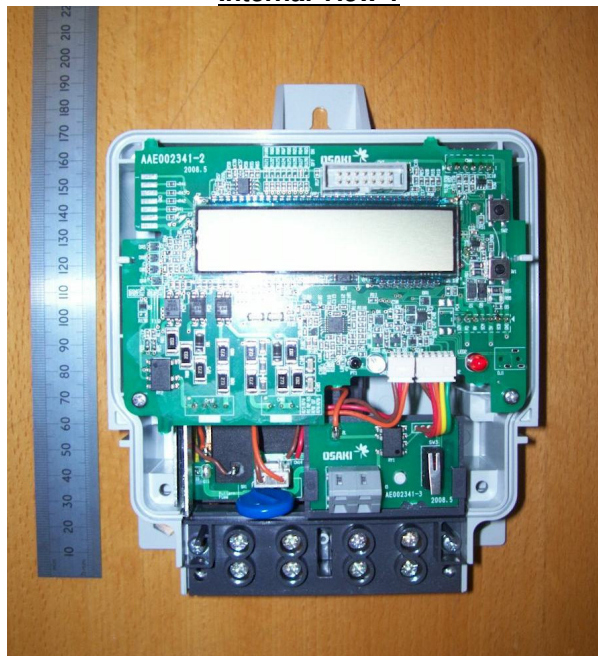
Approval Annex for EC Type Examination Cert. No. UK/ 0120/ SGS0025

Manufacturer : Elster Metering Systems	
Type of Meter(s) : AS252	
Description of Meter : Single Phase, Direct Connected, Credit, Import/Export, Active/Reactive, Multi Rate, Electricity Meter (DIN only)	
Accuracy Class (es) : A or B(kWh)	Software Version No. : BAS007 Ser. 037 Location : Display
Firmware Version No : BAS007 Ser. 036 Location : Nameplate & Display	Bill Of Materials No. : Drawing No's AAR001250 AAE002341-2,3,4 AAE002341-1 AZE003196 AZE003197 AZE003352
Meter Location : Indoor	Sealing Type : Wire & Steel Crimp Location : Under Terminal Cover
Integrity of Meter : Inaccessible Without Breaking Seals	Temperature Range : -40°C to +70°C
Type of Circuit(s) : Single Phase Two Wire	Frequency : 50Hz
Current Range(s) (A) : 10(60)A	Voltage Range(s) (V) : 220-250V

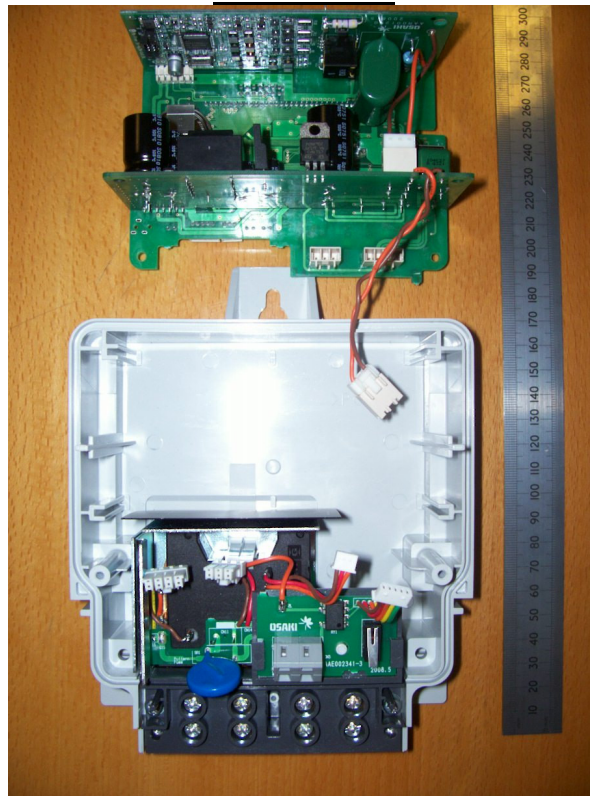
External View



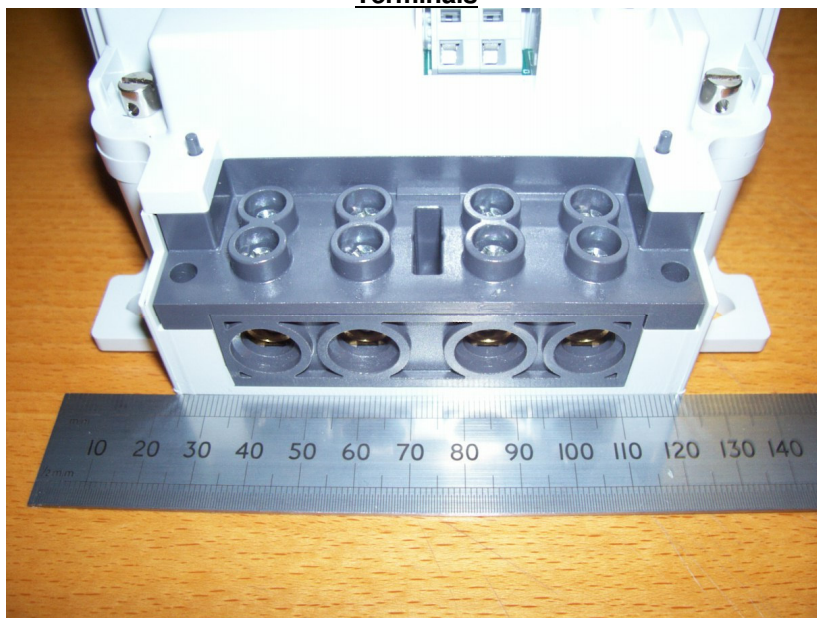
Internal View 1



Internal View 2



Terminals



Product Variant Identification Details:

U_n	I_b	I_{max}	SINGLE PHASE (AS252) MODEL CODE															
			TYPE (nameplate)															
			S	M	1	D	A	B	D	S	S	P	J	J	J	-	A	N
PRODUCT/TERMINATION			Single Phase, terminal arrangement (L-L-N-N)															
SERVICE TYPE			1-phase 2-wire															
CURRENT RANGE			10-60A (I_{max} any integral of I_b up to 60A)															
VOLTAGE			220 – 250V															
FREQUENCY, ACCURACY CLASS			50 Hz, Cl. 1 kWh / Cl. 2 kvarh (IEC62053-21, 23) – Cl. B (EN50470)															
TARIFF & HARDWARE CONFIGURATION			Multi Rate, kWh/kvarh registration, omnipolar disconnect contactor															
DISPLAY CONFIGURATION			Customer specified display configuration															
DISPLAY CYCLE, REGISTER SOURCES			Customer specified display sequence and register sources															
TEST INDICATOR(S) (see important note 3)			Non-modulated pulses, normally Active, mappable to Reactive 2,000 pulses/unit															
PULSING/ABSOLUTE OUTPUT(see important note 3 overleaf)			Alarm output neutral referenced 250mA~															
COMMUNICATIONS			IEC 62056-21 bidirectional optical port and Power Line carrier(PLC)															
OTHER OPTIONS			Extended terminal cover, no cut-out for cables.															
VERSION			Original (changed to denote hardware and firmware changes, not functionality)															
SPECIAL ADDITIONS			None available															

Modifications to the meter(s) described according to approval No. **UK/ 0120/ SGS0025** must be notified to the issuing body to confirm the meter(s) continuing compliance to the relevant pattern approval standard(s).