



NATIONAL STATISTICS NOTICE



WAR PENSION SCHEME ANNUAL STATISTICS, 1 APRIL 2008 - 31 MARCH 2013

INTRODUCTION

6 June 2013

Issued by

Defence Statistics (Health)
Ministry of Defence
MOD Abbeywood (North)
Bristol
BS34 8JH

Enquiries

Press Office:
Tel: 020 721 83253

Statistical Enquiries:
Head of Health
Tel: 030679 84423
Fax: 01179 130928
Email: DASA-Health-PQ-
FOI@mod.uk

Internet

www.dasa.mod.uk

Feedback is welcome

If you have any comments or questions about this publication or about Defence Statistics in general, you can contact us as follows:

E-mail:
DASA-enquiriesmailbox@
mod.uk

A National Statistics publication

National Statistics are produced to high professional standards. They undergo regular quality assurance reviews to ensure that they meet customer needs. They are produced free from any political interference.

For general enquiries about National Statistics, contact the National Statistics Customer Contact Centre:
Tel: 0845 601 3034
Fax: 01633 652747
Minicom: 01633 812399
E-mail: info@statistics.gov.uk
Internet: www.statistics.gov.uk
Internet: www.statistics.gov.uk

1. This annual National Statistics Notice provides summary statistics on claims, awards and recipients of pensions, allowances or other payments under the War Pension Scheme where disablement or death occurred as a result of Service prior to 6 April 2005.
2. The Armed Forces and Reserve Forces Compensation Scheme (AFCS) came into force on 6 April 2005 to pay compensation for injury, illness or death caused by Service on or after that date. Summary statistics for the AFCS can be found in a separate biannual report at www.dasa.mod.uk under 'All Other Publications' and 'Health/Medical Statistics'.
3. This report provides figures for claims registered and awards made over the latest five financial years 2008/09 to 2012/13. Some tables show a snapshot of the number of pensions in payment as at 31 March 2013. Details of the time period covered by each table are presented in the List of Tables on page 3. This report updates the previous notice for War Pensions Statistics as at 31 March 2012, released on 7 June 2012.
4. This report has been provided in response to the increasing number of requests for information about claims and awards under the scheme, and the number of individuals currently in receipt of War Pensions. A range of information is requested including further details of claims and awards (e.g. by claim type or outcome) and further information on those awarded compensation (e.g. age, sex or Service). The report is used by external organisations such as NHS trusts, local Government and Armed Forces charities. The report is also used to support other MOD departments in work planning and policy development.
5. The following areas of information are covered in the report:
 - Current recipients of War Pensions, with information presented by pension type, level of disablement, demographic information and financial information. This is provided to give a better picture of the type of people currently in receipt of compensation. Time trends are also provided to demonstrate the decreasing level of recipients under the scheme.
 - Number of claims, awards and appeals under the scheme, with information presented by scheme type, claim/appeal type, outcome and disablement percentage. This information is provided to show the volume of claims that are dealt with under the scheme, to show the success rates associated with each type of claim and appeal, and to show the key trends over time.
6. Information on WPS claims and awards that are made between 1 April 2013 and 31 March 2014 will be reported in the next publication in June 2014.
7. Defence Statistics have recently carried out internal and external customer consultations on the WPS National Statistic. A full summary of the

consultations and planned changes to the report can be found on the Defence Statistics website (www.dasa.mod.uk).

8. Further information on the WPS can be found at the following links: <https://www.gov.uk/pensions-and-compensation-for-veterans> and <http://www.veterans-uk.info/pensionscompensation.htm>.
9. Defence Statistics also publish information on Armed Forces Pension, War Pension and Armed Forces Compensation recipients by location. This is available on the Defence Statistics website (www.dasa.mod.uk) under 'other publications', 'health/medical statistics'.

KEY POINTS

10. As at 31 March 2013:
 - 127,590 War Disablement Pensioners (DPs) were receiving an ongoing pension. This represents a decrease of 5% (n=6,840) since 31 March 2012. This is expected as there are fewer people joining the scheme as injuries and illness since 6 April 2005 will now be eligible under the AFCS.
 - 24,415 War Widow(er)s (WWs) were receiving an ongoing pension. This represents a decrease of 7% (n=1,960) since 31 March 2012. (Table 1.1)
 - Approximately five out of six Disablement Pensioners (86%) received pensions at or below the 50% level of disablement (as part of the claim process, a doctor assesses a claimants level of disablement by comparing with an able-bodied healthy person of the same age and sex). The largest group of claimants were awarded at the 20% disablement level (40% of DPs). 3% of Disablement Pensioners received pensions the 100% disablement level (those with the most severe level of disablement). (Table 1.4)
 - Over half of Disablement Pensioners (51%) and around five-sixths of War Widow(er)s (85%) were aged 70 and over.(Table 1.6)
 - The average weekly amount received by Disablement Pensioners, including pension and supplementary allowances, was £82.52. The average weekly amount received by a Disablement Pensioner at the 100% disablement rate was £359.77. (Table 1.7)
 - The average weekly amount received by War Widow(er)s was £233.80. The average weekly War Widow(er)s pension was £126.32, with the remainder comprising supplementary allowances.

DATA, DEFINITIONS AND METHODS

Scheme information and definitions

11. A claimant is eligible for consideration under the WPS where disablement or death has occurred as a result of Service in HM Forces, prior to 6 April 2005. In addition, awards may also be made where disablement or death has occurred as a result of:
 - War-time Service in the Naval Auxiliary Service, or the Mercantile Marine
 - Service in the Polish Forces under British command during World War Two
12. Pensions, allowances or other payments may also be awarded where the disablement or death of a civilian or a member of a civil defence organisation is the direct result of an injury sustained as a result of enemy action in World War Two.
13. Claims for injuries/illnesses as a result of Service can not be made until an individual has left the Services.
14. Injuries and illnesses are awarded under the scheme based on an individual's percentage disablement. The degree of disablement is assessed on a percentage basis by the War Pension Agency medical advisors.

15. If an individual is assessed at a disablement percentage of 20% to 100%, they will be awarded an ongoing War Pension. This is paid at a rate which varies according to the degree of disablement. A gratuity award is a single payment where war disablement has been accepted, but the disablement has been assessed at less than 20%. A nil award (0% degree of disablement) will be given where the medical condition has been accepted as being due to Service but has not led to any degree of disablement.
16. From 8 April 2002 a change in the law governing the War Pensions Scheme means that the provisions for war widowers have been equalised to align with those available to war widows. This change in the war pension law applies from the 8 April 2002 onwards and means that war widowers are now entitled, as appropriate, to the same basic pension, supplementary pension and allowances (e.g. in respect of any dependant children) as war widows. In particular, the means-testing element previously applied to war widowers' claims and pensions has been removed.
17. For war widow(er)s the standard rate of pension may be paid if the widow(er) has a dependant child, or is over 40, or is incapable of self-support. The lower rate is paid to childless widow(er)s under the age of 40. If the spouse was receiving Constant Attendance Allowance, or at the time of his/her death was 80% or more disabled and receiving Unemployability Supplement, a War Widow(er)s Pension is awarded automatically irrespective of the cause of death.
18. The following periods of Service are covered under the WPS:
 - 1914 War - Disabled due to service between 4 August 1914 and 30 September 1921.
 - Inter War - Disabled due to service between 1 October 1921 and 2 September 1939.
 - 1939 Onwards - Disabled due to service from 3 September 1939 to 5 April 2005.
19. The following individuals receive payments under the scheme:
 - Disablement pensioner - member of former Service personnel with an injury/illness as a result of Service
 - War widow(er) - spouse of ex-Service person whose death was whilst in Service or related to a disablement due to Service prior to 6 April 2005.
 - Adult Dependant - adult relatives, i.e. sister, brother, aunt or uncle etc, for whom the service person was financially responsible.
 - War Orphan - child of deceased service person who has no surviving mother or father. Child whose mother was divorced from a service person at the time of death. Child who is not in the care of the surviving parent.
 - War Parent - parent of the deceased service person.
 - Unmarried Dependant - partner who lived with the ex-service person for at least 6 months before his enlistment, was maintained by him and who has borne his child.
 - Child Allowance Only - there is a Child Allowance Only Pension in payment, i.e. no award has been given to War Widow(er)s Pension but her child has been awarded.
20. Some individuals receive supplementary allowances in addition to their war pension. The definitions are provided in Annex A.

Medical condition information

21. Illnesses and injuries awarded under the WPS are recorded in both a free-text field and as a medical diagnosis code. To produce the figures for War pensions in payment for mental health conditions (see paragraph 51), records with a medical diagnosis code 4000 to 4008, indicating a mental disorder, were identified. The free-text field was also searched for terms such as 'PTSD', 'psych', 'phobia', 'depression', 'adjustment', 'anxiety', 'panic', 'dysthymic', 'schizophrenia', 'mood disorder', 'substance abuse' and 'mania', as well as any probable misspellings or alternate spellings. As conditions are sometimes spelt incorrectly it is possible that some records with reference to mental health have not been identified. Therefore the figures supplied should be treated as a minimum.

Data sources and quality

22. Figures presented in this Statistical Notice are based on data stored on the Service Personnel and Veterans' Agency's War Pensions Computer System (WPCS). Defence Statistics receive quarterly data extracts from the WPCS which are used to compile the figures provided.
23. The Service Personnel and Veterans' Agency are responsible for ensuring the quality of WPCS data supplied to Defence Statistics.
24. When Defence Statistics receive the WPCS data extracts basic consistency checks are carried out. For example, the numbers of records received is compared to the previous extract to ensure the total number is as expected. If any data quality issues are evident following receipt of data, Defence Statistics liaise with SPVA to determine whether any changes are required.
25. Further validation checks are carried out after the data has been processed to ensure that all processes and queries have run correctly and the final numbers are an accurate reflection of data received from SPVA. Manual checks are then carried out on the final report to ensure that figures quoted in the commentary reflect those in the tables, and that the numbers sum to the totals provided.

Presentation

26. In previous releases of these statistics, annual data was presented by financial year, however quarterly data was presented using calendar year quarters. This has now been amended so that the quarters correspond to the financial years (see **Conventions** section below for more details).
27. Defence Statistics have recently carried out internal and external customer consultations on the War Pension Scheme National Statistic. As a result, additional figures have been included in this release on the following:
 - Additional figures to show the number of people who have made claims/appeals (see Section 2). This has been included as Defence Statistics are frequently asked for the numbers of people who have made claims under the scheme, as opposed to the numbers of claims.
 - The number of disablement pensioners who are in receipt of an ongoing War Pension for a mental health condition (see page 15). This has been included as Defence Statistics receive a high volume of information requests about the number of people awarded War Pensions for mental health conditions.
28. In line with Defence Statistics Rounding Policy to maintain anonymity of claimants, all figures have been rounded to the nearest five (totals may not add due to rounding). Figures fewer than 5 have been suppressed and shown as '~'. Percentages have been rounded to the nearest 1%.

Revisions policy

29. The figures presented in this Statistical Notice are as provided to Defence Statistics in extracts from SPVA's War Pensions Computer System. These statistics are not subject to routine revision. In report updates previously published statistics with data received in the preceding four quarters. Historic data is only revised if errors are found in the classifications or statistical methods used during their publication.

Conventions

~	Negligible (greater than zero, fewer than 5)
r	Revised
	Break in series
Q1	1 April to 30 June
Q2	1 July to 30 September
Q3	1 October to 31 December
Q4	1 January to 31 March

RESULTS

List of Tables:

Section 1: Recipients of War Pensions

Table 1.1: War Pensions in payment by type of pension, principal scheme and quarter, 31 March 2012 to 31 March 2013, numbers.....	<u>6</u>
Table 1.2: War Pensions in payment by type of pension, gender and financial year end, 31 March 2009 to 31 March 2013, numbers.....	<u>7</u>
Table 1.3: War Pensions flows by type of pension and financial year, 2008-09 to 2011-12, numbers	<u>8</u>
Table 1.4: Disablement Pensions in payment by degree of disablement as at 31 March 2013, numbers.....	<u>9</u>
Table 1.5: Pensioners by type of pension, principal scheme (DPs) and Government Office Region (GOR) as at 31 March 2013, numbers	<u>11</u>
Table 1.6: War Pensions in payment by pension type, percentage disablement and age band as at 31 March 2013, numbers.....	<u>12</u>
Table 1.7: Average weekly amounts of pension entitlement by type, percentage disablement and age band as at 31 March 2013, currency (£)	<u>14</u>
Table 1.8: Supplementary allowances in payment by type of allowance and quarter, 31 March 2012 to 31 March 2013, numbers.....	<u>16</u>
Table 1.8a: Supplementary allowances in payment by type of pension, 31 March 2009 to 31 March 2013, numbers and average weekly amount (£)	<u>17</u>

Section 2: Number of claims, awards and appeals

Table 2.1: Claims registered during quarter, Q4-2011/12 to Q4-2012/13, numbers.....	<u>18</u>
Table 2.1a: Claims registered during quarter by claim type, Q4-2011/12 to Q4-2012/13, numbers.....	<u>19</u>
Table 2.2: Claim outcomes by financial year, 2008-09 to 2012-13, numbers and percentages.....	<u>21</u>
Table 2.2a: Claim outcomes by quarter, Q4-2011/12 to Q4-2012/13, numbers	<u>23</u>
Table 2.3: Successful gratuity & nil percentage awards cleared during financial year, 2008-09 to 2012-13, numbers.....	<u>24</u>
Table 2.4: First claims to supplementary allowances cleared during quarter, by allowance type and outcome, Q4-2011/12 to Q4-2012/13, numbers.....	<u>25</u>
Table 2.4a: First claims to supplementary allowances automatically awarded during quarter, by allowance type, Q4-2011/12 to Q4-2012/13, numbers.....	<u>26</u>
Table 2.5: Appeals cleared to Pensions Appeal Tribunal for consideration during quarter, by appeal type, Q4-2011/12 to Q4-2012/13, numbers.....	<u>26</u>
Table 2.6: Pensions Appeal Tribunal decisions during quarter by appeal type, Q4-2011/12 to Q4-2012/13, numbers and percentages.....	<u>27</u>

Section 1: Recipients of War Pensions

30. **Table 1.1** provides a summary for the number of War Pensions in payment by type of pension, scheme and quarter, for the last five quarters of data (31 March 2012 to 31 March 2013).
31. **Table 1.1** shows that as at 31 March 2013 a total of 152,695 individuals were in receipt of War Pensions, of which 127,590 were disablement pensioners, 24,415 were War Widow(er)s and 690 were other types of pensioner.
32. Between 31 March 2012 and 31 March 2013 the total number of War pensions in payment reduced by 5%, from 161,535 to 152,695. The number of War Disablement pensioners in receipt of an ongoing pension decreased 5% (from 134,430 to 127,590) and the number of War Widow(er)s in receipt of a pension decreased 7% (from 26,375 to 24,415).
33. This decline is primarily due to the fact that the number of individuals leaving the scheme each year is considerably higher than the number of individuals joining the scheme. The reasons for this are twofold. Firstly, the age profile of current recipients; 51% of DPs and 85% of WWs were aged 70 or over as at 31 March 2013 (see **Table 1.6** for age group breakdown). Secondly, compensation claims for injury, illness, or death caused by Service on or after the 6 April 2005 are now processed under the Armed Forces Compensation Scheme (AFCS). As such, the number of claimants joining the WPS is expected to reduce further.

Table 1.1: War Pensions in payment by type of pension, principal scheme and quarter, 31 March 2012 to 31 March 2013, numbers

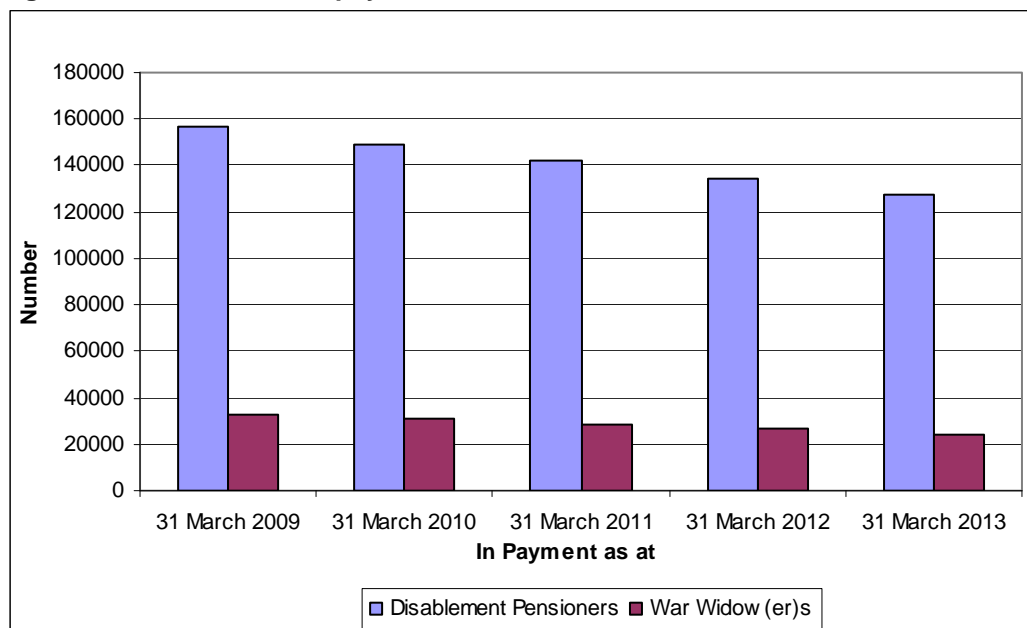
	Awards in payment at:				
	31-Mar-12	30-Jun-12	30-Sep-12	31-Dec-12	31-Mar-13
ALL IN PAYMENT	161,535	159,340	157,305	155,240	152,695
Disablement Pensioners in receipt of an ongoing war pension	134,430	132,705	131,125	129,525	127,590
1914 war	0	0	0	0	0
Inter-war	20	15	15	15	15
1939 war onwards	132,450	130,780	129,250	127,710	125,835
Civilian	1,165	1,145	1,130	1,105	1,080
Polish	360	340	325	305	290
Mercantile marine	435	415	405	385	370
Not known	~	5	0	0	~
War Widow(er)s	26,375	25,910	25,485	25,025	24,415
War widows pension	26,295	25,830	25,405	24,940	24,330
War widowers pension	80	80	80	85	85
Other Pensioners	730	725	695	695	690
Disablement pensioners (ALSO allowance only)	370	370	365	365	360
War orphans pension	25	25	20	20	20
War parents pension	15	15	15	15	10
Adult dependant pension	~	~	~	~	~
Unmarried dependant pension	~	~	~	~	~
Child allowance only	315	315	290	295	295

34. **Table 1.2** provides a summary for the number of War Pensions in payment by type of pension, gender and financial year. **Table 1.2** shows that of the 152,695 individuals in receipt of war pensions as at 31 March 2013, 80% (n=122,105) were males and 20% (n=30,590) were females. As at 31 March 2013, 95% of Disablement Pensioners were males (n=121,530), and less than one percent of individuals in receipt of War Widow(er)s pensions were males (n=85). We would expect the majority of disablement pensioners to be males, as they make up the majority of the overall Armed Forces population.
35. **Table 1.2** and **Figure 1** show that the number of Disablement Pensioners receiving a payment has fallen each year over the past five years, from 157,125 as at 31 March 2009, to 127,590 as at 31 March 2013, an overall decrease of 19%. Over the same period the number of War Widow(er)s fell 26%, from 32,790 to 24,415.

Table 1.2: War Pensions in payment by type of pension, gender and financial year end, 31 March 2009 to 31 March 2013, numbers

	Awards in payment at:				
	31-Mar-09	31-Mar-10	31-Mar-11	31-Mar-12	31-Mar-13
ALL IN PAYMENT	190,745	180,400	170,910	161,535	152,695
Men	150,655	142,770	135,740	128,720	122,105
Women	40,090	37,630	35,175	32,820	30,590
Disablement Pensioners	157,125	148,945	141,715	134,430	127,590
Men	150,005	142,135	135,120	128,130	121,530
Women	7,120	6,810	6,595	6,305	6,060
War Widow(er)s	32,790	30,655	28,425	26,375	24,415
Men	70	75	75	80	85
Women	32,715	30,580	28,350	26,295	24,330
Other Pensioners	830	795	770	730	690
Men	580	555	540	510	490
Women	255	240	230	220	200

Figure 1: War Pensions in payment, 31 March 2009 to 31 March 2013, numbers



Source Data: Table 1.2

36. **Table 1.3** provides the total intake and outflow from the War Pension Scheme in the last five financial years, by pension type. This table shows that the number of new entrants to the scheme has reduced by 41% over the last four financial years, from 3,410 in 2008-09 to 2,010 in 2012-13. During each of the last five financial years the numbers leaving the scheme have been much higher than the numbers of new entrants. Overall during 2012-13 there were 2,010 new entrants to the scheme, while 10,855 individuals left the scheme.

Table 1.3: War Pensions flows by type of pension and financial year, 2008-09 to 2012-13, numbers ¹

	Financial Year				
	2008-09	2009-10	2010-11	2011-12	2012-13
ALL IN PAYMENT	190,745	180,400	170,910	161,535	152,695
Total intake in financial year	3,410	2,795	2,640	2,145	2,010
Total outflow in financial year	13,930	13,140	12,125	11,520	10,855
Disablement Pensioners	157,125	148,945	141,715	134,430	127,590
Intake during financial year	2,590	2,070	1,975	1,525	1,435
Outflow during financial year	10,640	10,250	9,210	8,810	8,275
War Widow(er)s	32,790	30,655	28,425	26,375	24,415
Intake during financial year	795	715	650	605	575
Outflow during financial year	3,245	2,845	2,880	2,655	2,535
Other Pensioners	830	795	770	730	690
Intake during financial year	25	10	10	10	5
Outflow during financial year	45	45	35	50	45

1. Individuals leave the scheme (outflow) for a number of reasons, such as death, re-marriage (for pensions post 1973), failure to draw pension for a year, refusal to undergo medical/provide medical evidence or imprisonment.

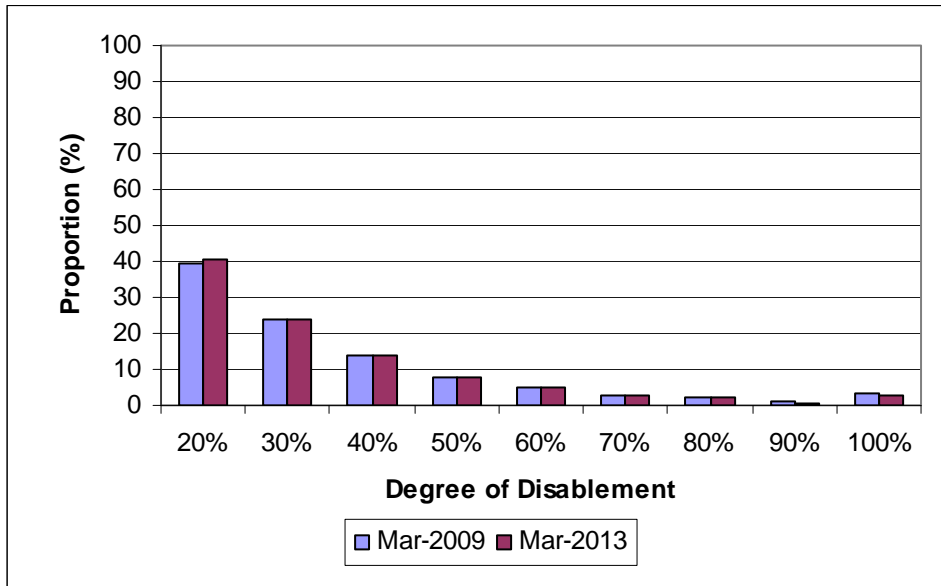
37. **Table 1.4** provides the number of disablement pensions in payment as at 31 March 2013 for each degree of disablement and scheme type.
38. **Table 1.4** shows that approximately five out of six 86% (n=109,710) disablement pensioners received a pension at the 50% degree of disablement or below. 3% (n=3,770) received a pension at 100% degree of disablement (the most severely disabled). 99% (n=125,835) of disablement pensions were in payment under the scheme type of '1939 War onwards'.
39. **Figure 2** shows that the proportion of DPs at each degree of disablement has remained constant between March 2009 and March 2013.

Table 1.4: Disablement Pensions in payment by degree of disablement as at 31 March 2013, numbers

		Degree of disablement (Percentage)							
Men and Women		TOTAL	1914 War	Inter War	1939 War onwards	Civilian	Polish	Mercantile Marine	Not Known
	ALL	127,590	0	15	125,835	1,080	290	370	~
Increasing disablement	20	51,340	0	~	50,890	245	85	115	0
	30	30,695	0	~	30,280	240	65	100	~
	40	17,960	0	~	17,645	195	45	70	0
	50	9,715	0	0	9,560	100	25	25	0
	60	6,140	0	0	6,045	60	20	15	0
	70	3,580	0	~	3,500	55	10	10	0
	80	2,910	0	~	2,850	40	15	10	0
	90	950	0	~	920	20	5	~	0
	100	3,770	0	~	3,630	115	15	15	0
		Not Known ⁽¹⁾	530	0	0	515	10	~	~
Men									
	ALL	121,530	0	15	120,455	415	275	370	~
Increasing disablement	20	49,010	0	~	48,725	90	75	115	0
	30	29,290	0	~	29,035	90	65	100	~
	40	17,095	0	~	16,890	85	45	70	0
	50	9,290	0	0	9,200	35	25	25	0
	60	5,835	0	0	5,775	25	20	15	0
	70	3,385	0	~	3,340	20	10	10	0
	80	2,755	0	~	2,710	20	15	10	0
	90	905	0	~	885	5	5	~	0
	100	3,535	0	~	3,460	50	15	15	0
		Not Known ⁽¹⁾	435	0	0	430	0	~	~
Women									
	ALL	6,060	0	0	5,380	665	15	0	0
Increasing disablement	20	2,330	0	0	2,170	155	5	0	0
	30	1,405	0	0	1,245	155	~	0	0
	40	865	0	0	755	110	~	0	0
	50	430	0	0	360	65	0	0	0
	60	305	0	0	265	40	~	0	0
	70	195	0	0	160	35	0	0	0
	80	155	0	0	135	20	0	0	0
	90	45	0	0	35	15	0	0	0
	100	235	0	0	170	65	0	0	0
		Not Known ⁽¹⁾	95	0	0	85	10	~	0

Note: (1) 'Not known' consists of those entitled to a disablement pension but with no percentage disability recorded. These include clerical overrides and suspended cases.

Figure 2: Disablement pensioners at each degree of disablement as at 31 March 2009 and 31 March 2013, percentages



Source Data: Table 1.4

40. Table 1.5 provides the number of pensions in payment as at 31 March 2013 broken down by Government Office Region, pension and scheme type. This table shows that the highest numbers of pensions were in payment to individuals with a contact address in the South West (n=20,785) and the South East (N=20,135). We would expect to see a high level of claimants in these areas, as the majority of Armed Forces personnel are stationed within these areas of the UK (see Defence Statistics personnel statistics by stationed location for more information <http://www.dasa.mod.uk/index.php?pub=TSP10>).

Table 1.5: Pensioners by type of pension, principal scheme (DPs) and Government Office Region (GOR) as at 31 March 2013, numbers

GOR	Disablement Pensioners										
	All Pensioners	All DPs	1914 War	Inter-war	1939 War onwards	Civilian	Polish	Mercantile Marine	Not known	War Widow(er)s	Other Pensioners ⁽²⁾
ALL	152,695	127,590	0	15	125,835	1,080	290	370	~	24,415	690
North East	9,855	8,855	0	0	8,775	40	~	35	0	945	55
North West	16,685	14,275	0	0	14,020	150	25	75	0	2,330	80
Yorkshire and the Humber	11,010	9,210	0	~	9,135	40	20	15	0	1,735	65
East Midlands	9,955	8,375	0	0	8,310	35	20	10	0	1,540	40
West Midlands	8,940	7,305	0	0	7,230	50	20	5	~	1,595	35
East of England	10,455	8,255	0	~	8,120	110	15	10	0	2,165	35
London	5,030	3,780	0	~	3,585	150	40	~	0	1,230	20
South East	20,135	16,055	0	5	15,785	215	15	35	0	4,000	80
South West	20,785	17,475	0	~	17,305	125	15	25	0	3,210	100
Wales	8,575	7,255	0	~	7,190	35	10	25	0	1,280	40
Scotland	14,465	12,550	0	0	12,450	45	20	40	0	1,845	70
N. Ireland	4,310	3,685	0	0	3,675	5	0	~	0	605	20
Other UK ⁽¹⁾	435	360	0	0	355	~	0	~	0	70	~
UK Unknown	460	370	0	0	360	5	~	~	0	90	0
Overseas	11,455	9,635	0	~	9,400	65	85	85	0	1,770	50
Not Known	140	140	0	0	135	~	~	0	0	~	0

Note: (1) 'Other UK' includes Isle of Man and Channel Islands.

(2) 'Other Pensioners' includes war orphans, war parents, adult dependant, unmarried dependants, juvenile dependant, child allowance only, and allowance for lowered standard of occupation only pensioners.

41. **Table 1.6** provides the number of War Pensions in payment as at 31 March 2013 by age group, pension type and disablement percentage. This table shows that 51% (n=65,650) of DPs and 85% (n=20,780) of WWs were aged 70 or over as at 31 March 2013. This number will continue to rise as those in payment get older and people with new injuries are eligible under the AFCS instead of the WPS.

Table 1.6: War Pensions in payment by pension type, percentage disablement (DPs) and age band as at 31 March 2013, numbers

AGE GROUP	All Pensioners	Disablement Pensioners										Not Known ⁽¹⁾	War Widow(er)s	Other Pensioners ⁽²⁾
		All DPs	20%	30%	40%	50%	60%	70%	80%	90%	100%			
ALL	152,695	127,590	51,340	30,695	17,960	9,715	6,140	3,580	2,910	950	3,770	530	24,415	690
Under 30	565	475	265	110	45	20	15	~	~	~	5	10	10	85
30 to 34	1,675	1,645	815	385	205	90	60	20	20	~	25	25	30	~
35 to 39	3,315	3,225	1,545	780	435	190	110	55	40	~	40	25	75	20
40 to 44	8,250	8,010	3,500	1,975	1,130	560	350	165	115	30	140	50	190	50
45 to 49	9,565	9,235	3,945	2,265	1,305	620	405	205	170	40	215	55	275	60
50 to 54	11,030	10,540	4,205	2,555	1,480	855	510	315	195	75	305	40	430	60
55 to 59	9,615	9,000	3,425	2,170	1,370	725	475	275	205	40	290	30	530	85
60 to 64	9,785	8,910	3,360	2,135	1,315	735	480	270	225	75	290	25	805	75
65 to 69	12,300	10,915	4,410	2,490	1,540	835	560	365	260	75	350	25	1,295	95
70 to 74	13,300	11,415	4,885	2,595	1,475	830	520	315	300	100	365	30	1,810	75
75 to 79	17,940	15,270	6,755	3,805	1,930	995	595	375	300	95	390	35	2,620	50
80 to 84	16,175	12,375	5,210	3,080	1,685	870	510	305	275	90	315	30	3,785	15
85 to 89	19,170	13,870	5,025	3,280	2,045	1,215	760	470	375	135	500	65	5,285	15
90 to 94	16,565	11,035	3,475	2,685	1,740	1,015	685	385	365	160	460	60	5,520	10
95 +	3,450	1,685	520	390	260	170	110	65	55	20	75	15	1,760	~

Notes: (1) 'Not known' consists of those entitles to a disablement pension but with no percentage disability recorded. These include clerical overrides and suspended cases.

(2) 'Other Pensioners' includes War Orphans, War Parents, Adult Dependant, Unmarried Dependant, Juvenile Dependant, Child Allowance only and Allowance for Lowered Standard of Occupation only Pensioners.

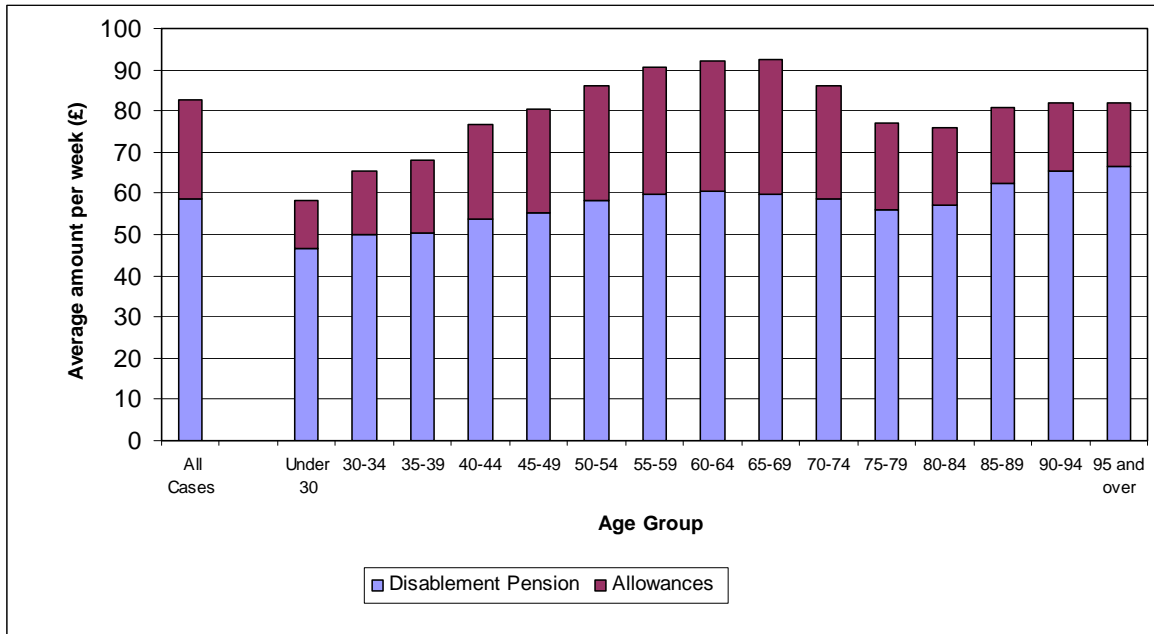
42. **Table 1.7** provides the average weekly amounts received by DPs and WWs in War Pensions and allowances, broken down by age group and degree of disablement.
43. **Table 1.7** shows that the average weekly amount received by DPs as at 31 March 2013 was £82.52. Of this, £58.64 was from their disablement pension, whilst £23.88 came from supplementary allowances. The average weekly amount received by a DP at the 100% disablement rate was £359.77. DPs aged 95 and over received the highest weekly pension of £66.61, whilst DPs aged 65-69 received the highest weekly supplementary allowance of £32.93.
44. **Figure 3** shows that disablement pensions increased with each age group and then leveled off between the age groups 55-59 and 65-69. At age group 75-79 there was a drop in weekly pensions before they began to increase again at 85-89. Similarly, supplementary allowances increased with each age group until the age group 65-69, they then began to decrease at age group 70-74 onwards.
45. **Table 1.7** shows that the average weekly amount received by WWs as at 31 March 2013 was £233.80. Of this, £126.32 was from their pension, whilst £107.48 came from supplementary allowances. WWs aged 95 and over received the highest average weekly pension amount (£127.56), and WWs aged 90-94 received the highest average weekly supplementary allowances amount (£125.94).
46. **Figure 4** shows that WWs pensions increased with each age group and leveled off at age group 50-54 to 95 and over. From the age group 35-39, WW average weekly supplementary allowances decrease up until the age group 55-59, before they increase at age group 60-64 to 95 and over.

Table 1.7: Average weekly amounts of pension entitlement by type, percentage disablement (DPs) and age band as at 31 March 2013, currency (£)

(All figures are in £s)

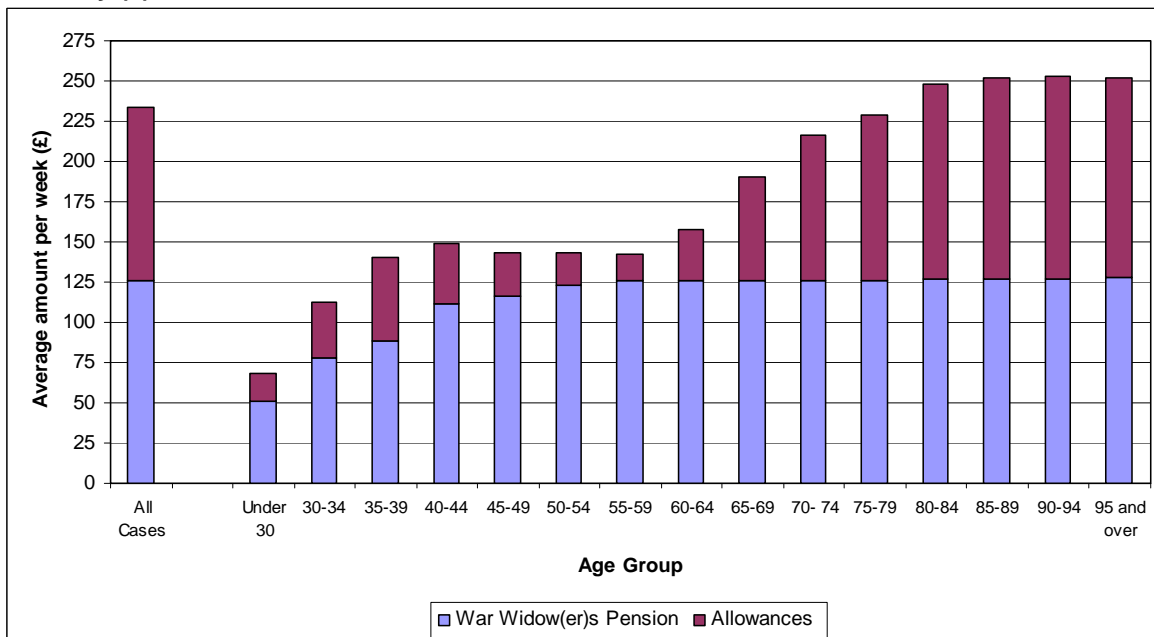
AGE GROUP	Disablement Pension										War Widow(er)s
	All DPs	20%	30%	40%	50%	60%	70%	80%	90%	100%	
PENSION & ALLOWANCES											
All Cases	82.52	34.92	54.19	95.84	124.88	168.90	198.33	250.79	274.12	359.77	233.80
Under 30	58.32	33.47	49.70	90.79	114.93	163.81	117.46	248.00	250.12	464.13	68.63
30 to 34	65.39	33.50	49.89	90.94	114.44	187.84	196.32	263.56	151.31	403.05	112.50
35 to 39	68.19	33.97	50.79	96.43	127.93	184.10	234.80	273.88	445.39	359.40	140.30
40 to 44	76.73	34.36	52.01	101.43	131.91	188.48	219.01	267.57	332.99	405.07	149.20
45 to 49	80.40	34.95	53.88	98.02	131.09	190.06	221.43	291.87	332.19	380.19	143.62
50 to 54	86.07	35.29	55.23	98.51	135.48	184.75	218.46	266.42	289.25	374.75	142.91
55 to 59	90.65	36.37	56.48	100.63	136.90	185.99	220.03	279.85	320.02	381.22	141.84
60 to 64	92.07	36.14	56.57	99.48	134.81	187.58	220.45	279.81	292.03	382.75	157.27
65 to 69	92.60	35.43	56.78	105.71	139.82	191.54	227.45	285.22	325.94	405.12	190.01
70 to 74	86.22	35.27	55.57	99.81	128.34	179.02	210.92	275.82	307.62	378.67	216.28
75 to 79	77.10	34.81	54.74	96.08	124.03	166.09	199.57	260.71	284.83	371.04	228.93
80 to 84	76.09	34.41	54.09	94.39	119.26	154.37	179.11	231.48	257.23	348.70	248.55
85 to 89	80.68	34.15	52.06	86.37	109.21	139.58	163.89	214.10	247.09	329.99	252.35
90 to 94	81.80	34.30	51.73	84.27	105.79	132.21	152.54	190.20	210.31	288.64	253.32
95 +	81.93	34.05	51.40	83.71	104.18	126.62	145.39	180.86	198.69	282.92	251.78
PENSION ONLY											
All Cases	58.64	33.48	50.18	66.61	83.16	99.87	116.78	133.44	150.27	165.69	126.32
Under 30	46.61	33.45	49.66	59.06	76.68	100.55	117.46	134.24	151.02	150.06	50.86
30 to 34	49.98	33.19	49.86	63.91	80.45	95.92	106.75	124.89	117.62	156.77	77.42
35 to 39	50.52	33.24	49.62	64.78	79.58	95.86	113.00	129.96	151.02	145.72	88.84
40 to 44	53.74	33.23	49.85	65.21	80.90	96.85	113.91	129.27	144.16	160.04	111.84
45 to 49	55.34	33.40	49.90	65.62	81.55	98.40	115.09	131.24	149.73	159.89	116.01
50 to 54	58.21	33.50	50.05	66.27	82.32	99.03	116.68	132.38	146.45	161.20	123.32
55 to 59	59.66	33.47	50.20	66.55	82.93	99.62	116.92	132.98	150.73	165.30	126.31
60 to 64	60.60	33.48	50.23	66.84	83.40	100.39	117.18	134.01	150.97	165.50	125.77
65 to 69	59.67	33.54	50.28	66.94	83.70	100.39	116.92	133.95	150.93	166.73	125.99
70 to 74	58.72	33.54	50.29	67.07	83.82	100.46	117.03	134.18	150.99	167.68	125.82
75 to 79	56.05	33.54	50.31	67.07	83.83	100.58	117.35	134.07	151.00	167.58	125.99
80 to 84	57.22	33.53	50.31	67.08	83.86	100.65	117.32	134.21	151.02	167.74	126.65
85 to 89	62.23	33.54	50.31	67.10	83.86	100.65	117.43	134.24	151.02	167.79	127.10
90 to 94	65.46	33.54	50.30	67.10	83.88	100.65	117.43	134.19	151.00	167.79	127.38
95 +	66.61	33.55	50.33	67.12	83.90	100.65	117.40	134.24	151.02	167.80	127.56
ALLOWANCES ONLY (including Widows special allowance)											
All Cases	23.88	1.44	4.01	29.22	41.72	69.03	81.50	117.35	123.85	194.07	107.48
Under 30	11.71	0.02	0.04	31.74	38.25	63.26	0.00	113.76	99.10	314.07	17.77
30 to 34	15.41	0.31	0.03	27.03	33.98	91.92	89.57	138.67	33.69	246.28	35.08
35 to 39	17.66	0.73	1.18	31.65	48.35	88.24	121.81	143.91	294.37	213.69	51.47
40 to 44	22.98	1.13	2.17	36.22	51.02	91.62	105.10	138.30	188.83	245.03	37.35
45 to 49	25.03	1.55	3.98	32.41	49.54	91.66	105.38	160.63	182.46	220.29	27.61
50 to 54	27.86	1.79	5.18	32.24	53.16	85.73	101.78	134.04	142.80	213.54	19.59
55 to 59	30.99	2.90	6.28	34.08	53.97	86.37	103.12	146.87	169.29	215.92	15.53
60 to 64	31.47	2.66	6.34	32.65	51.41	87.19	103.27	145.80	141.06	217.25	31.50
65 to 69	32.93	1.89	6.50	38.77	56.12	91.15	110.53	151.27	175.01	238.39	64.02
70 to 74	27.50	1.73	5.28	32.74	44.53	78.56	93.90	141.64	156.63	210.99	90.46
75 to 79	21.05	1.27	4.43	29.01	40.20	65.51	82.22	126.64	133.83	203.46	102.94
80 to 84	18.86	0.88	3.78	27.31	35.40	53.72	61.79	97.27	106.21	180.96	121.90
85 to 89	18.45	0.61	1.74	19.27	25.35	38.93	46.47	79.86	96.07	162.20	125.26
90 to 94	16.34	0.76	1.43	17.17	21.91	31.56	35.11	56.01	59.31	120.84	125.94
95 +	15.32	0.49	1.07	16.59	20.28	25.97	27.99	46.62	47.67	115.12	124.22

Figure 3: Disablement pensioners' average weekly pension and allowances as at 31 March 2013, by age group, currency (£)



Source Data: Table 1.7

Figure 4: War Widow(er)s' average weekly pension and allowances as at 31 March 2013 by age group, currency (£)



Source Data: Table 1.7

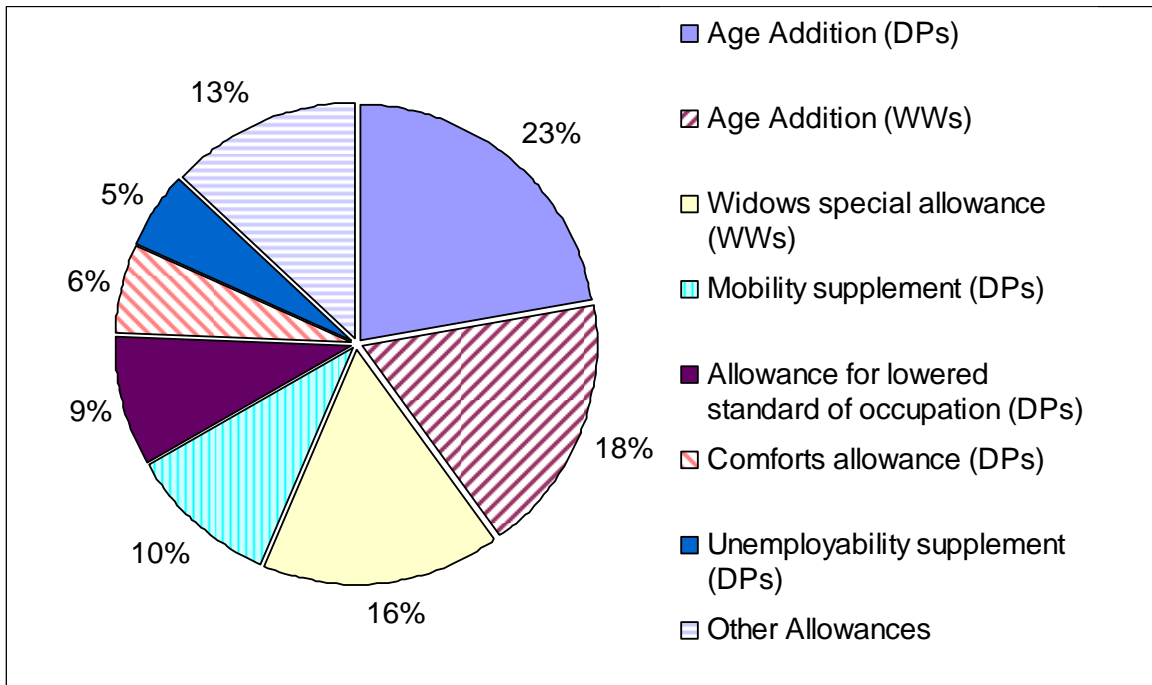
47. **Table 1.8** provides the number of supplementary allowances in payment over the last five quarters, broken down by allowance type and quarter. This table shows that as at 31 March 2013 a total of 123,420 supplementary allowances were in payment.

48. **Figure 5** shows that the most common supplementary allowances in payment as at 31 March 2013 were DPs and WWs Age Additions, accounting for 40% (n=49,200) of all allowances in payment. The next most common allowance was Widow(er)s' Special Allowance, accounting for 16% (n=20,305) of all allowances in payment. This is a supplementary pension payable to Widow(er)s of Service personnel who died or left the Services before 31 March 1973, as they would not benefit from the improvements made to the MOD's Armed Forces Pension Scheme after that date.

Table 1.8: Supplementary allowances in payment by type of allowance and quarter, 31 March 2012 to 31 March 2013, numbers

Allowance type	Awards in payment at:				
	31-Mar-12	30-Jun-12	30-Sep-12	31-Dec-12	31-Mar-13
ALL ALLOWANCES	131,870	129,850	127,660	125,790	123,420
Age 80 addition (NI) (Disablement & Widow(er))	1,000	955	935	910	865
Age addition - Disablement	29,935	29,370	28,850	28,265	27,545
Age addition – Widows	23,465	23,035	22,665	22,225	21,655
Allowance for lowered standard of occupation	11,150	11,115	11,070	11,045	10,965
Clothing allowance	3,115	3,060	3,015	2,970	2,925
Comforts allowance	7,645	7,555	7,460	7,380	7,320
Constant attendance allowance	2,480	2,430	2,380	2,345	2,320
Exceptionally severe disablement allowance	550	540	525	520	515
Severe disablement occupational allowance	~	~	~	~	~
Invalidity allowance	6,035	5,995	5,955	5,915	5,885
Mobility supplement	13,350	13,200	13,075	12,960	12,830
Unemployability supplement	6,910	6,845	6,780	6,710	6,660
Modified unemployability supplement	35	35	30	30	30
Additional allowance spouse	1,230	1,210	1,185	1,165	1,150
Modified allowance for spouse	135	130	130	130	115
Additional allowance dependant	~	~	~	~	~
Additional allowance child	1,165	1,170	985	1,050	1,120
Child allowance	665	675	525	555	585
Over age infirm child allowance	250	245	240	240	235
Modified over age infirm child allowance	10	10	10	10	10
Temporary allowance Widow(er)	135	145	135	135	130
Widow(er)s rent allowance	310	310	310	315	255
Widow(er)s special allowance	22,305	21,820	21,395	20,925	20,305

Figure 5: All supplementary allowances in payment as at 31 March 2013, percentages



Source Data: Table 1.8

49. **Table 1.8a** provides the overall number of supplementary allowances in payment at the end of each of the last five financial years. The average weekly amount paid in allowances to DPs and WWs at the end of each of these years is also provided.

Table 1.8a: Supplementary allowances in payment by type of pension, 31 March 2009 to 31 March 2013, numbers and average weekly amount (£)

	Awards in payment at:				
	31-Mar-09	31-Mar-10	31-Mar-11	31-Mar-12	31-Mar-13
ALL ALLOWANCES	158,815	149,470	140,645	131,870	123,420
Average Weekly Allowances Entitlement (in £s)					
Disablement Pensioners	19.86	20.31	21.66	22.50	23.88
War Widow(er)s	97.04	100.95	101.34	103.44	107.48

50. Defence Statistics receive a high volume of requests for the number of disablement pensioners in receipt of war pensions for specific medical conditions. Due to the free text nature of the condition information, it is not possible to provide a summary table for all conditions. However it is possible to carry out searches of medical diagnosis codes and free-text condition information for specific conditions. We have had a lot of interest in the number of disablement pensioners in receipt of war pensions for mental health conditions and therefore the number has been provided below.

51. As at 31 March 2013, there were 13,745 (9%) disablement pensioners in receipt of ongoing War Pensions for a mental health condition related to Service. Of these, 6,205 were in receipt of pensions specifically for post-traumatic stress disorder (PTSD).

Section 2: Number of claims, awards and appeals

52. **Table 2.1** provides the number of claims registered under the War Pension Scheme during the last five quarters, broken down by claim type and quarter. During Q4-2012/13, 5,670 people registered a total of 6,105 claims, of which 49% (n=3,010) were disablement claims. **Table 2.1a** provides a more detailed breakdown for each type of claim.

Table 2.1: Claims registered during quarter, Q4-2011/12 to Q4-2012/13, numbers

Claim type	Claims registered during:				
	Q4-2011/12	Q1-2012/13	Q2-2012/13	Q3-2012/13	Q4-2012/13
All Claims - number of people	6,375	5,070	5,135	5,985	5,670
All Claims - number of claims	6,980	5,475	5,485	6,395	6,105
Disablement claims	3,390	2,705	2,630	3,530	3,010
War Widow(er)s claims	320	250	280	245	320
Supplementary allowance claims	1,240	840	890	1,015	1,020
Supplementary allowance reviews	785	585	610	660	735
Medical expenses	745	695	680	585	565
Appeals	505	395	395	360	445

Table 2.1a: Claims registered during quarter by claim type, Q4-2011/12 to Q4-2012/13, numbers

Claim type	Claims registered during:				
	Q4-2011/12	Q1-2012/13	Q2-2012/13	Q3-2012/13	Q4-2012/13
Disablement claims - number of people	3,210	2,585	2,550	3,430	2,925
Disablement claims - number of claims	3,390	2,705	2,630	3,530	3,010
Current invaliding	250	150	160	195	145
First claim to pension	1,435	1,160	1,135	1,645	1,360
Further condition	710	600	620	775	680
Deterioration	870	685	615	825	735
Departmental review	10	10	10	10	15
Conditional list review	110	105	90	80	75
War Widow(er)s claims - number of people	315	245	275	245	310
War Widow(er)s claims - number of claims	320	250	280	245	320
Widow(er)s	310	245	265	235	305
Restored Widow(er)s	10	5	15	10	10
Review Widow(er)s	0	0	0	~	0
Supplementary allowance claims - number of people	1,070	760	810	880	900
Supplementary allowance claims - number of claims	1,240	840	890	1,015	1,020
Allowance for lowered standard of occupation	140	100	80	110	95
Clothing allowance	45	20	35	45	40
Constant attendance allowance	85	45	55	95	70
Mobility supplement	255	150	160	260	195
Unemployability supplement	90	55	65	80	75
Additional allowance spouse	25	20	15	20	30
Additional allowance dependant	0	0	0	0	~
Additional allowance child	25	20	15	30	20
Child allowance only	~	0	~	~	~
Widow(er)s child allowances	0	0	0	0	0
Widow(er)s rent allowance	85	35	45	25	30
Temporary allowance Widow(er)	110	75	80	75	80
Funeral expenses	380	320	340	275	370
Supplementary allowance reviews⁽¹⁾ - number of people	720	520	550	600	655
Supplementary allowance reviews⁽¹⁾ - number of claims	785	585	610	660	735
Allowance for lowered standard of occupation	390	300	340	370	380
Constant attendance allowance	15	15	15	25	15
Mobility supplement	30	25	15	30	25
Unemployability supplement	120	100	90	95	105
Additional allowance spouse	190	55	35	45	170
Additional allowance dependant	~	0	0	0	~
Child allowance ⁽²⁾	35	95	115	100	45
Appeals - number of people	440	345	340	310	380
Appeals - number of claims	505	395	395	360	445
Entitlement - Disablement	140	110	105	100	130
Entitlement - Widow(er)s	20	15	20	5	10
Assessment	280	210	225	205	250
Supplementary Allowances	55	50	40	40	40
Miscellaneous	10	10	10	5	15

Table 2.1a: Claims registered during quarter by claim type, Q4-2011/12 to Q4-2012/13, numbers (Continued)

Claim type	Claims registered during:				
	Q4-2011/12	Q1-2012/13	Q2-2012/13	Q3-2012/13	Q4-2012/13
Medical expenses⁽³⁾ - number of people	620	615	605	525	495
Medical expenses⁽³⁾ - number of claims	745	695	680	585	565
Appliance	10	5	5	~	~
Chiropody	~	~	~	~	~
Convalescence	20	10	10	5	5
Dental	20	10	15	15	5
Hearing aid	10	15	10	5	10
Home nursing equipment	5	10	~	~	5
Hospital travel expenses	65	55	55	50	45
House adaptation grant	15	15	25	20	10
Prescription	20	20	15	30	15
Priority treatment	75	75	55	30	40
Private treatment	10	5	10	10	10
Provision of treatment	305	285	275	230	255
Remedial treatment	145	135	165	140	115
Skilled nursing care	0	~	~	~	0
Spectacles	15	20	15	15	10
Treatment allowance (inc. loss of earnings)	25	15	15	20	35

Notes: (1) Reviews of allowances which involve rates of pay are traditionally held in the first quarter of the year.

(2) Contains widow(er)s' child allowance and child allowance only reviews.

(3) Excludes NI and Eire.

53. **Table 2.2** provides information on the outcomes of claims cleared during each of the last five financial years. Percentages are also provided for each claim outcome in **Figure 6**.

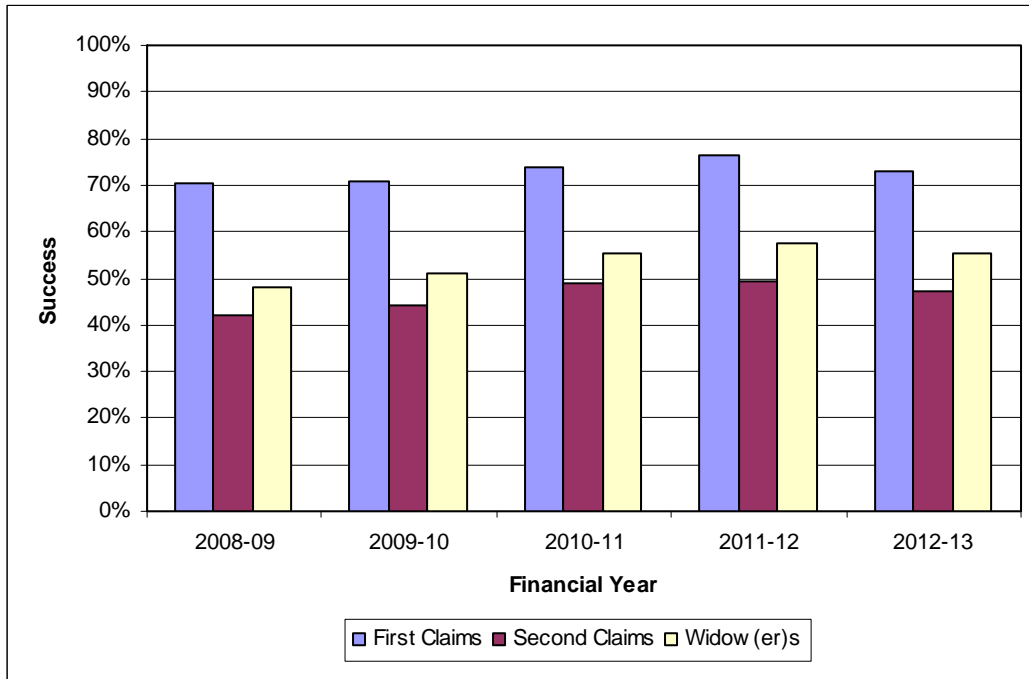
54. **Table 2.2** shows that in the financial year 2012-13, 73% (n=2,720) of first claims resulted in an ongoing war pension or gratuity, 48% (n=1,880) of second claims resulted in an increased entitlement or new award, and 55% (n=550) of war widow(er)s' claims resulted in an ongoing widow(er)s' pension. **Figure 6** shows that the success rates of first and second claims, and also war widow(er)s claims have increased between 2008/09 and 2011/12 and have decreased in the financial year 2012-13.

Table 2.2: Claim outcomes by financial year, 2008-09 to 2012-13, numbers and percentages

Claim Type	Financial Year:									
	2008-09		2009-10		2010-11		2011-12		2012-13	
	Number	%	Number	%	Number	%	Number	%	Number	%
All First Claims - number of people	7,125		5,800		4,825		4,090		3,730	
All First Claims - number of claims	7,125		5,800		4,825		4,090		3,730	
Awarded 20–100%	1,605	23%	1,200	21%	1,130	23%	905	22%	890	24%
Awarded 1-19%	3,410	48%	2,915	50%	2,425	50%	2,225	54%	1,830	49%
Awarded 0%	1,235	17%	1,010	17%	730	15%	575	14%	705	19%
Rejections	875	12%	680	12%	535	11%	380	9%	305	8%
All Second/Subsequent Claims - number of people	8,550		7,160		5,715		4,720		3,930	
All Second/Subsequent Claims - number of claims	8,560		7,165		5,720		4,730		3,930	
Awarded 20–100%	70	<1%	55	<1%	30	<1%	35	<1%	40	<1%
Awarded 1-19%	65	<1%	50	<1%	50	<1%	30	<1%	25	<1%
Awarded 0%	35	<1%	30	<1%	35	<1%	15	<1%	35	<1%
Increased assessments	3,470	41%	3,060	43%	2,715	47%	2,275	48%	1,785	45%
Maintained assessments	4,415	52%	3,570	50%	2,550	45%	2,065	44%	1,800	46%
Reduced assessments	110	1%	60	1%	40	1%	40	1%	45	1%
Rejections	395	5%	340	5%	300	5%	260	6%	205	5%
All Widow(er)s Claims⁽¹⁾ - number of people	1,595		1,285		1,120		1,015		990	
All Widow(er)s Claims⁽¹⁾ - number of claims	1,595		1,285		1,120		1,015		990	
Awards	770	48%	655	51%	620	55%	585	57%	550	55%
Rejections	830	52%	630	49%	500	45%	430	43%	440	45%

Notes : (1) Includes restored Widows; Since 2005/06 figures do not include Widow(er)s' reviews.

Figure 6: Successful first claims, second claims, and widow(er)s claims by financial year, 2008-09 to 2012-13, percentages



Source Data: Table 2.2

55. **Table 2.2a** provides the numbers of claims cleared during the last five quarters by claim type and outcome. This table shows that the largest category of claims cleared during Q4-2012/13 were first claims to pension, with a total of **915** claims cleared during this latest quarter. 70% of these claims (n=645) resulted in an ongoing war pension or gratuity.

Table 2.2a: Claim outcomes by quarter, Q4-2011/12 to Q4-2012/13, numbers

Claim type	Claims cleared during:					
	Q4-2011/12	Q1-2012/13	Q2-2012/13	Q3-2012/13	Q4-2012/13	
First claims - number of people	1,185	790	870	1,020	1,050	
First claims - number of claims	1,185	790	870	1,020	1,050	
Current Invaliding	All	155	165	120	140	135
	Awarded 20-100%	75	90	65	75	80
	Awarded 1-19%	45	50	40	40	45
	Awarded 0%	10	15	10	15	5
	Rejected	20	5	~	10	5
First Claim to Pension	All	1,030	630	750	880	915
	Awarded 20-100%	220	125	120	175	165
	Awarded 1-19%	570	315	385	485	480
	Awarded 0%	135	135	180	150	195
	Rejected	110	60	65	75	75
Second/Subsequent claims - number of people	1,290	895	975	990	1,070	
Second/Subsequent claims - number of claims	1,295	895	975	990	1,070	
Further Condition	All	590	430	435	500	475
	Awarded 20-100%	5	~	~	~	10
	Awarded 1-19%	5	~	10	5	~
	Awarded 0%	5	~	~	10	10
	Increased	315	225	205	235	230
	Maintained	190	150	155	190	180
	Reduced	10	~	5	5	5
	Rejected	60	40	50	50	40
Conditional List Review	All	115	65	75	55	80
	Awarded 20-100%	~	0	0	~	~
	Awarded 1-19%	0	0	0	0	0
	Awarded 0%	0	0	0	0	~
	Increased	20	5	10	5	10
	Maintained	95	55	60	45	60
	Reduced	~	~	~	0	~
	Rejected	0	~	~	0	~
Deterioration Claim	All	575	395	460	430	500
	Awarded 20-100%	~	~	~	~	~
	Awarded 1-19%	0	0	0	0	~
	Awarded 0%	0	0	0	~	~
	Increased	300	220	190	210	225
	Maintained	270	170	255	205	265
	Reduced	~	~	5	~	~
	Rejected	~	~	5	~	~
Departmental Review	All	15	~	5	10	15
	Awarded 20-100%	~	0	0	~	~
	Awarded 1-19%	0	0	~	0	0
	Awarded 0%	0	0	0	0	0
	Increased	~	0	0	~	~
	Maintained	5	~	~	~	10
	Reduced	~	0	~	~	~
	Rejected	0	~	~	~	~
Widow(er)s Claims⁽¹⁾ - number of people	220	215	320	220	235	
Widow(er)s Claims⁽¹⁾ - number of claims	220	215	320	220	235	
	Awards	145	125	155	130	135
	Rejections	70	90	165	90	95

Note: (1) Figures include restored Widows; Figures do not include widow(er)s' reviews.

56. **Table 2.3** provides the numbers of successful nil and gratuity awards during each of the last five financial years. A nil award (0% degree of disablement) will be given where the medical condition has been accepted as being due to Service but has not led to any degree of disablement. No payment is made for nil awards. A gratuity award is a single payment where war disablement has been accepted, but the disablement has been assessed at less than 20%. This table shows that during the last financial year 2012-13 a total of 2,600 nil and gratuity awards were made.

Table 2.3: Successful gratuity & nil percentage awards cleared during financial year, 2008-09 to 2012-13, numbers

	Financial Year:				
	2008-09	2009-10	2010-11	2011-12	2012-13
All Nil and Gratuity Awards - number of people	4,765	4,015	3,255	2,865	2,600
All Nil and Gratuity Awards - number of claims	4,765	4,015	3,260	2,865	2,600
Nil awards	1,290	1,050	780	605	740
Gratuity awards					
1 - 5%	1,205	1,120	895	790	1,120
6 - 14%	1,935	1,610	1,340	1,250	10
15 - 19%	265	335	235	245	220

57. **Table 2.4** provides the numbers of claims for supplementary allowances that were cleared during the latest five quarters by allowance type and outcome. During Q4-2012/13 most cleared claims for supplementary allowances were for funeral expenses (n=255) and mobility supplement (n=195). For each of these allowance types respectively, 51% (n=130) and 62% (n=120) of claims had a successful outcome.

Table 2.4: First claims to supplementary allowances cleared during quarter, by allowance type and outcome, Q4-2011/12 to Q4-2012/13, numbers ⁽¹⁾

Allowance type		First awards made during:				
		Q4-2011/12	Q1-2012/13	Q2-2012/13	Q3-2012/13	Q4-2012/13
Supplementary allowance claims - number of people		725	625	765	715	745
Supplementary allowance claims - number of claims		795	695	810	800	845
Allowance for lowered standard of occupation	All	80	65	65	90	100
	Awarded	45	45	35	60	55
	Rejected	35	20	30	30	40
Clothing allowance	All	30	15	30	35	40
	Awarded	15	5	15	15	20
	Rejected	15	5	15	20	20
Constant attendance allowance	All	55	40	50	60	60
	Awarded	35	20	25	35	40
	Rejected	25	20	20	25	20
Exceptionally severe disablement allowance	All	5	5	10	15	10
	Awarded	5	5	10	15	10
	Rejected	0	0	0	0	0
Severe disablement occupational allowance	All	0	0	0	~	~
	Awarded	0	0	0	~	~
	Rejected	0	0	0	0	0
Mobility supplement	All	175	110	135	155	195
	Awarded	100	60	85	95	120
	Rejected	75	50	55	60	75
Unemployability supplement	All	45	50	30	60	55
	Awarded	30	35	20	45	40
	Rejected	15	15	10	15	15
Additional allowance spouse	All	15	20	10	20	25
	Awarded	10	5	5	15	10
	Rejected	10	15	~	5	10
Additional allowance dependant	All	~	0	0	0	~
	Awarded	~	0	0	0	0
	Rejected	0	0	0	0	~
Additional allowance child	All	15	10	10	15	25
	Awarded	10	10	10	15	25
	Rejected	~	~	0	~	~
Child allowance only	All	0	~	~	~	~
	Awarded	0	~	0	0	~
	Rejected	0	0	~	~	0
Widow(er)s child allowances	All	~	~	~	~	~
	Awarded	~	~	~	~	~
	Rejected	0	0	0	0	0
Widow(er)s rent allowance	All	5	5	~	~	5
	Awarded	5	5	~	~	5
	Rejected	0	0	0	0	0
Temporary allowance Widow(er)	All	95	85	85	70	70
	Awarded	95	80	85	65	70
	Rejected	0	~	0	~	~
Funeral expenses	All	275	285	375	275	255
	Awarded	165	150	175	130	130
	Rejected	110	135	200	140	125

Note: (1) Awards processed in the quarter. Entitlement may be backdated to a previous quarter.

58. **Table 2.4a** provides the numbers of supplementary allowances that were automatically awarded under the scheme during the latest five quarters, by allowance type. Age allowances made up the majority of automatic allowances during Q4-2012/13 (n=350).

Table 2.4a: First claims to supplementary allowances automatically awarded during quarter, by allowance type⁽¹⁾, Q4-2011/12 to Q4-2012/13, numbers

Allowance type	First awards made during:				
	Q4-2011/12	Q1-2012/13	Q2-2012/13	Q3-2012/13	Q4-2012/13
Supplementary allowance claims - number of people	415	405	415	295	355
Supplementary allowance claims - number of claims	415	405	415	295	355
Age – 80 addition (NI) (Disablement & Widow(er))	~	~	~	~	0
Age – disablement	285	285	275	195	240
Age – Widow(er)s	125	110	130	95	110
Comforts allowance	~	~	~	~	~
Invalidity allowance	~	~	~	~	~

Note: (1) Awards processed in the quarter. Entitlement may be backdated to a previous quarter.

59. **Table 2.5** provides the numbers of appeals that were cleared to the Pensions Appeal Tribunal (PAT) during each of the last five quarters by type of appeal. Of the 435 appeals cleared to the PAT during Q4-2012/13 the majority (n=235) were assessment appeals.

Table 2.5: Appeals cleared to Pensions Appeal Tribunal for consideration during quarter, by appeal type, Q4-2011/12 to Q4-2012/13, numbers

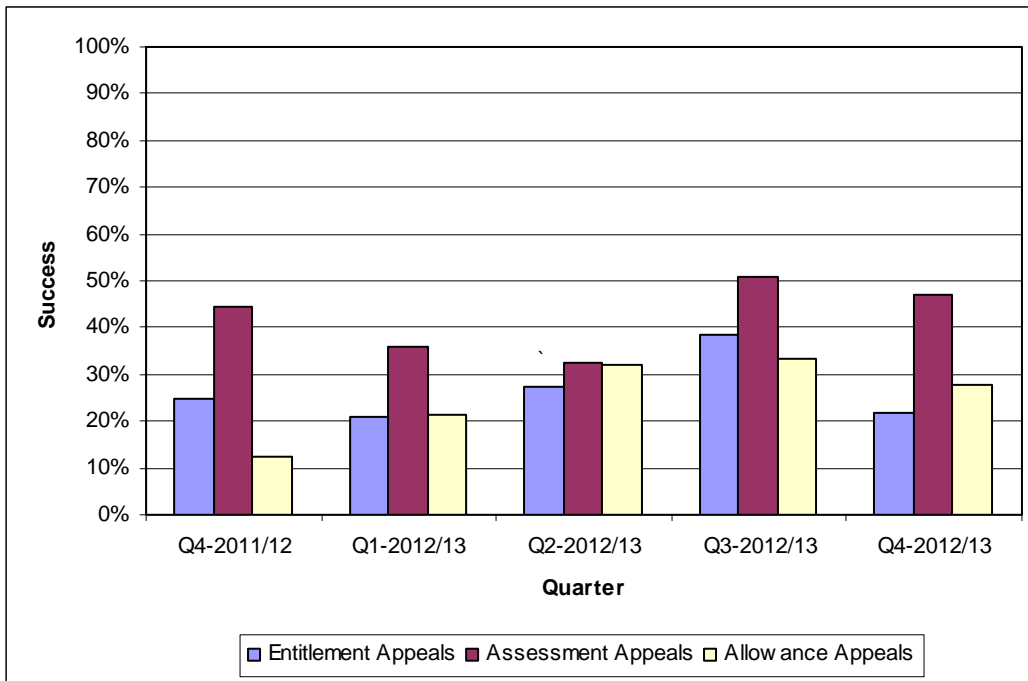
Appeals cleared	Appeals cleared during:				
	Q4-2011/12	Q1-2012/13	Q2-2012/13	Q3-2012/13	Q4-2012/13
All Appeals Cleared - number of people	405	370	310	320	375
All Appeals Cleared - number of appeals	455	430	365	355	435
Entitlement - Disablement	105	125	105	90	115
Entitlement - Widow(er)s	25	20	20	10	15
Assessment	260	230	180	210	235
Supplementary Allowances	55	45	50	35	55
Temporary Allowances	0	0	0	0	0
Miscellaneous	10	10	10	10	10

60. **Table 2.6** and **Figure 7** provide information on the decisions made by the PAT for appeals cleared during the last five quarters.
61. **Table 2.6** and **Figure 7** show that the success of appeals has varied over the last five quarters. Between Q4-2011/12 and Q4-2012/13, the percentage of successful entitlement appeals (including WWs entitlement appeals) has ranged from a high of 39% in Q3-2012/13 and a low of 21% in Q1-2012/13. During the same period, the percentage of assessment appeals resulting in an increased award ranged from a high of 51% in Q3-2012/13 and a low of 33% in Q2-2012/13. The percentage of successful allowance appeals ranged from a high of 33% in Q3-2012/13 and a low of 13% in Q4-2011/12. Please note some of these results are based on small numbers of appeals.

Table 2.6: Pensions Appeal Tribunal decisions during quarter by appeal type, Q4-2011/12 to Q4-2012/13, numbers and percentages

	Decisions made during:									
	Q4-2011/12		Q1-2012/13		Q2-2012/13		Q3-2012/13		Q4-2012/13	
		%		%		%		%		%
Entitlement Appeals - number of people	100		105		95		85		60	
Entitlement Appeals - number of appeals	100		105		95		85		60	
<u>Disablement</u>										
All	85		85		80		75		50	
Allowed	25	28%	20	25%	25	32%	30	44%	10	23%
Disallowed	60	72%	65	75%	55	68%	40	56%	35	77%
<u>Widow(er)s</u>										
All	20		20		15		10		10	
Allowed	~	11%	~	5%	0	0%	0	0%	~	17%
Disallowed	15	89%	20	95%	15	100%	10	100%	10	83%
<u>Overall</u>										
Allowed	25	25%	20	21%	25	27%	30	39%	15	22%
Disallowed	75	75%	85	79%	70	73%	50	61%	45	78%
Assessment Appeals - number of people	190		155		160		120		110	
Assessment Appeals - number of appeals	190		155		160		120		110	
Increased	85	44%	55	36%	50	33%	60	51%	50	47%
Upheld	105	54%	100	64%	105	67%	60	49%	55	53%
Reduced	~	<1%	0	<1%	~	<1%	0	<1%	0	<1%
Allowance Appeals - number of people	25		30		25		15		20	
Allowance Appeals - number of appeals	25		30		30		15		20	
Allowed	~	13%	5	21%	10	32%	5	33%	5	28%
Disallowed	20	88%	20	79%	20	68%	10	67%	15	72%

Figure 7: Successful entitlement appeals, assessment appeals and allowance appeals by quarter, Q4-2011/12 to Q4-2012/13, percentages



Source Data: Table 2.6

Annex A - definitions of supplementary allowances

Age Allowance - This may be paid to a war disablement pensioner (man or woman) who is aged 65 or over and whose disablement is assessed at 40% or more.

Allowance for Lowered Standard of Occupation (ALSO) - This may be paid if a pensioner's earning capacity is reduced because their pensioned disablement permanently prevents them following their regular occupation. To gain entitlement new claimants must be under age 65, with a service disablement of at least 40% when they make their claim. This allowance plus their basic War Disablement Pension cannot exceed the 100% disablement pension rate.

Clothing Allowance (CLOT) - This may be paid if the disablement causes exceptional wear and tear on clothing.

Comforts Allowance (COMF) - This may be paid to a severely disabled pensioner who is receiving Constant Attendance Allowance or Unemployability Supplement or both. It is intended to help with the extra expenses associated with severe disablement.

Constant Attendance Allowance (CAA) - This may be paid to a pensioner who needs regular personal attention because of their pensioned disablement and that disablement is assessed at 80% or more. It is payable at one of four rates. The rate varies according to the level of attendance they need.

Elderly Widow(er)'s Age Allowance - A war widow(er) may receive an additional allowance at age 65 which is increased at age 70 and again at age 80.

Exceptionally Severe Disablement Allowance (ESDA) - This may be paid to a pensioner who is receiving Constant Attendance Allowance at one of the two highest rates, or would be receiving it if they were not in hospital.

Funeral Expenses (FE) - Funeral expenses may be paid if the pensioner died as a result of his service disablement, or died while having treatment for that disablement in hospital, or was entitled to Constant Attendance Allowance, or was at the time of his death 80% or more disabled and receiving Unemployability Supplement.

Invalidity Allowance (IVA) - This may be paid to a pensioner receiving Unemployability Supplement. The rate varies according to the age at which unemployability began.

Modified Over Age Infirm Allowance (MOIA) - Compensation/Allowances (including that paid to children living in the Irish Republic or Overseas) due to infirmity are taken into account when calculating an award of OAIA and adjustments are made if necessary. (See OAIA below)

Modified Unemployability Supplement (MSUP) - The basic conditions of eligibility to UNSUPP for a pensioner living abroad (including the Irish Republic and the Channel Islands) are the same as for the UK, however, if they become eligible for Retirement Pension or other benefit payable out of the public funds of that country then UNSUPP may be adjusted with that benefit, or paid at a nominal rate to allow continued payment of comforts allowance.

Over Age Infirm Allowance (OAIA) - Over Age Infirm Allowance for children of deceased pensioners unable to support themselves dates back to the 1914 War. The allowance can be awarded or continued beyond the normal age limits on the grounds of infirmity if the ailment is of a nature which is likely to prevent the person from earning a living either permanently or for a prolonged period and infirmity commenced before age 16. The person is still referred to as a child even though they may be quite elderly.

Rent Allowance (RENT) - A war widow(er) with a child or children may be eligible for a rent allowance.

Severe Disablement Occupational Allowance (SDOA) - This may be paid to a pensioner who is entitled to Constant Attendance Allowance at one of the two highest rates, but who still normally has a gainful occupation.

Temporary Allowance for Widow(er)s (TAW) - This may be paid to a widow(er), irrespective of the cause of their spouse's death, if he/she were awarded Unemployability Supplement or Constant Attendance Allowance or both. The allowance is approximately equal to the disablement pension and allowances paid to their late spouse. It is paid for the first 26 weeks of widowhood.

Treatment Allowance (TA) - This is equivalent to a disablement pension paid at the 100% rate. It may be paid instead of a disablement pension to a pensioner who incurs a loss of earnings as a result of receiving treatment for their pensioned disablement.

Unemployability Supplement (UNSUPP) - This may be paid to a pensioner who is unemployable or virtually unemployable as a result of the war pensioned disablement. To gain entitlement, new claimants must be under age 65, with a pensioned disablement assessed at 60% or more when they make their claim. Additional allowances may be paid for a spouse and a child or children.

War Pensioner's Mobility Supplement (WPMS) - This is intended to help with the mobility costs of a pensioner who is unable to walk, or virtually unable to walk. New claimants must have a service disablement of at least 40%. It is paid to double amputees and to those pensioners who need help getting about because they are both deaf and blind as a result of their pensioned disablement.

War Widow(er)'s Special Allowance - This is a Supplementary Pension payable to "pre-1973 war widow(er)s" (the widow(er)s of Service personnel who died or left the services before 31st March 1973, and who did not benefit from the improvements made from that date to the MOD's Armed Forces Pension Scheme).