



Department  
for Environment  
Food & Rural Affairs



## Monthly publication of National Statistics on the Incidence of Tuberculosis (TB) in Cattle to end April 2013 for Great Britain

These statistics were released today, Wednesday 17 July 2013 at 09:30, with the next notice to be updated on Wednesday 14 August 2013 at 09:30.

These statistics are obtained from the Animal Health and Veterinary Laboratories Agency (AHVLA) work management IT support system (Sam), used for the administration of TB testing in GB. They are a snapshot of the position on the date on which the data were extracted. These statistics may be subject to regular revision until all test results are available. In particular figures from 2009 onwards will be subject to further revision as test and breakdown records are completed.

### The key points relating to April 2013 are :-

- The provisional April 2013 incidence rate is 4.1%, compared to 3.8% in April 2012. However, care needs to be taken not to read too much into short term figures, especially as this figure includes a number of unclassified incidents. As such, the incidence rates are subject to further revisions as more tests and their results for the period are input.
- The number of new herd incidents during the period January to April 2013 was 1,838 compared to 1,940 for January to April 2012. The number of tests on officially TB free herds was 29,419 during January to April 2013, compared to 31,517 during January to April 2012.
- The number of cattle compulsorily slaughtered as reactors or direct contacts was 12,006 during January to April 2013, compared to 12,279 during January to April 2012.

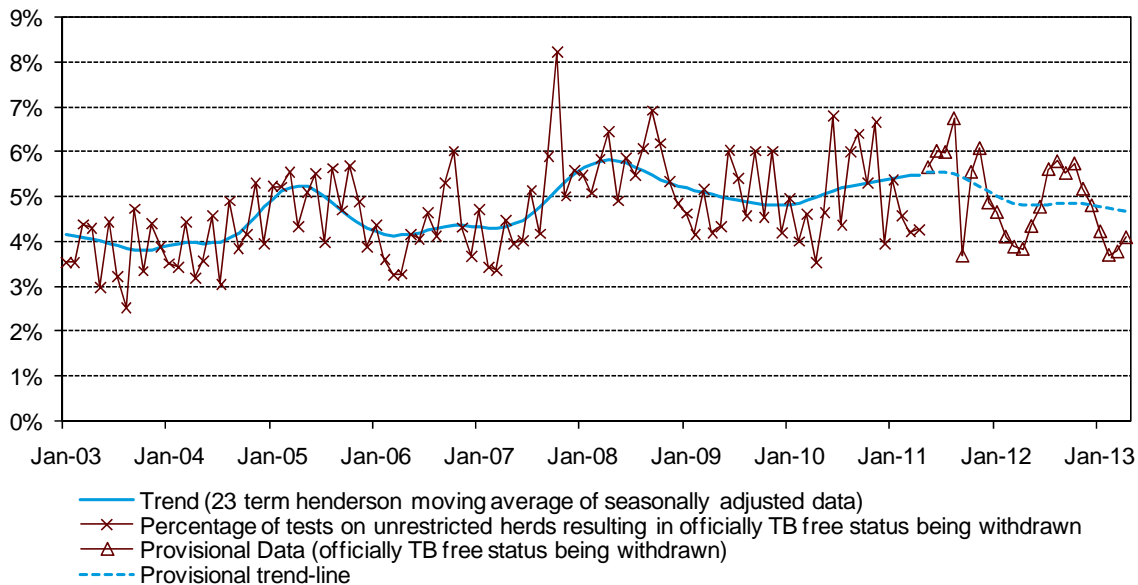
---

Enquiries to :- [tbstatistics@defra.gsi.gov.uk](mailto:tbstatistics@defra.gsi.gov.uk)  
Media Enquiries to :- 0207 238 6007 (Press Office)

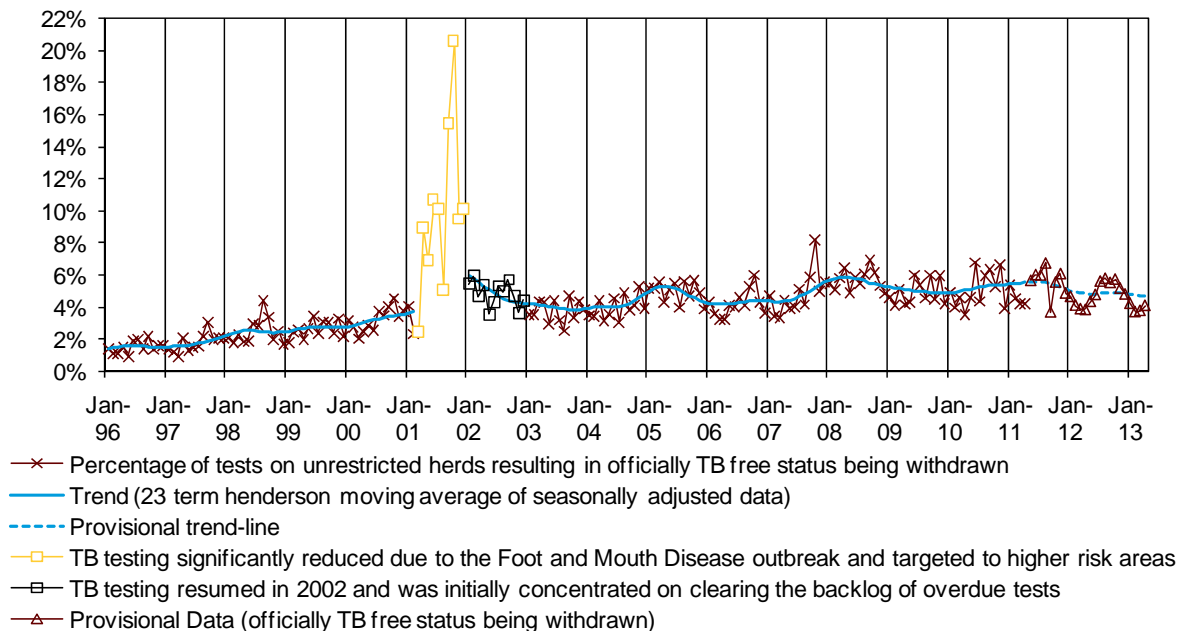
**A National Statistics publication.** National Statistics are produced to high professional standards. They undergo regular quality assurance reviews to ensure that they meet customer needs. They are produced free from any political interference. For general enquiries about National Statistics, contact the National Statistics Public Enquiry Service: tel. 0845 601 3034 email [info@statistics.gov.uk](mailto:info@statistics.gov.uk). You can find National Statistics on the internet at [www.statistics.gov.uk](http://www.statistics.gov.uk).

---

**Figure 1: Number of officially TB free status being withdrawn breakdowns, as a percentage of tests on officially TB free herds :-**



**Figure 2: Number of officially TB free status being withdrawn breakdowns, as a percentage of tests on officially TB free herds :-**



The charts published in this statistical notice, together with the equivalent figures from January 1996 onwards, are also available in spreadsheet format on the Defra web site at :- <https://www.gov.uk/government/publications/incidence-of-tuberculosis-tb-in-cattle-in-great-britain>. Visit the second link (MS Excel spreadsheet) entitled "Incidence of TB in cattle in Great Britain - GB dataset".

## Notes

### Herd terminology

1. The terminology used to describe TB breakdowns in this notice to classify herds according to their TB status has been brought in line with that used in EU regulations. This means that in Table 1 of this notice the following changes have been made :-

#### Old terminology

Herds under movement restriction

Unrestricted herds

New confirmed herd incidents

#### New terminology

Herds not officially TB free (non-OTF herds)

*(these are recorded in Table 1, column 2)*

Officially TB free (OTF) herds

*(these are recorded in Table 1, column 3)*

New herd incidents with OTF status withdrawn (OTFW)

*(these are recorded in Table 1, column 5)*

2. There is no change to the composition of the underlying data. Further information on this and TB incident classification can be found at :-  
[http://ahvla.defra.gov.uk/documents/ov/ov-newsletter/OV\\_newsletter\\_12.pdf](http://ahvla.defra.gov.uk/documents/ov/ov-newsletter/OV_newsletter_12.pdf)
3. Data for more recent months should be treated as provisional results, as a number of TB incidents are still 'unclassified'. These are TB incidents that at the end of the period covered by this notice had not been designated OTFW, but were still ongoing and could become OTFW if further testing revealed one or more animals with post mortem evidence of TB.

### Methodology

1. Certain statistics are affected by seasonal patterns and variations in the frequency of testing. TB testing is seasonal as more herds are tested in the winter when more cattle are housed. The animals tested are not a random sample of the whole GB herd. Furthermore, herds are tested more frequently in areas of higher TB incidence than in those of historically low incidence. In general, as more tests are carried out, more TB incidents (infected herds) are likely to be found.
2. The herd TB incidence figure is calculated by first estimating a point average for OTFW incidents where there are a number of unclassified results (the average of the ranges provided in the accompanying tables, for each month), this average is then divided by the number of tests in OTF herds each month, and an average is then calculated.
3. The trend in the incidence of TB in cattle in Great Britain is analysed using a 23-term Henderson moving average of the seasonally adjusted data of the incidence rate (the number of OTFW breakdowns divided by the number of tests on OTF herds).
4. From March to December 2001, the trend was not published because the reliability of the underlying data was significantly affected as a result of the disruption to TB testing during the Foot and Mouth Disease outbreak. Publication of the underlying trend resumed from January 2002 onwards, although 2002 data and trend should be treated with caution as post-FMD testing was initially targeted at higher risk herds and herds with overdue tests.

## Further Information

1. This statistical notice and a wide range of other statistics are available on the internet at - <https://www.gov.uk/government/organisations/department-for-environment-food-rural-affairs/about/statistics>
2. For further information on TB in cattle, TB testing and much more, please go to the Defra TB Website – <https://www.gov.uk/government/policies/reducing-bovine-tuberculosis>
3. For statistics on TB in Northern Ireland please visit - <http://www.dardni.gov.uk/index/dard-statistics/animal-disease-statistics.htm>
4. For statistics on TB in the Republic of Ireland please visit - <http://www.agriculture.gov.ie/animalhealthwelfare/diseasecontrol/bovinetbbrucellosiseradicationschemes/statistics/tbstats>

**TABLE 1: TB INCIDENTS IN GREAT BRITAIN - HERDS**

|      |        | Total tests on herds | Herds not officially TB free (non-OTF herds) | Tests on officially TB free herds (OTF) | Of which: New herd incidents | Of which: officially TB free withdrawn (OTFW) | Number of OTFW breakdowns as a percentage of tests on officially TB free herds |
|------|--------|----------------------|--|---|------------------------------|---|--|
|      |        | (1)                  | (2)  | (3)                                     | (4)                          | (5)   | (6)  |
| 1996 |        | 36,314               | 1,589  | 34,812                                  | 1,075                        | 490   | 1.4%   |
| 1997 |        | 34,065               | 1,632  | 32,295                                  | 1,195                        | 540   | 1.7%   |
| 1998 |        | 37,046               | 2,077  | 34,502                                  | 1,514                        | 787   | 2.3%   |
| 1999 |        | 41,365               | 2,374  | 38,338                                  | 1,661                        | 967   | 2.5%   |
| 2000 |        | 40,669               | 2,482  | 37,184                                  | 1,738                        | 1,135   | 3.1%   |
| 2001 | *      | 13,187               | 1,697  | 11,118                                  | 802                          | 571   | 5.2%   |
| 2002 | **     | 49,709               | 4,167  | 43,641                                  | 3,323                        | 2,042   | 4.7%   |
| 2003 |        | 56,208               | 5,460  | 47,568                                  | 3,214                        | 1,789   | 3.8%   |
| 2004 |        | 56,836               | 5,220  | 49,027                                  | 3,341                        | 1,934   | 4.0%   |
| 2005 |        | 55,887               | 5,669  | 46,725                                  | 3,665                        | 2,308   | 4.9%   |
| 2006 |        | 64,457               | 5,859  | 56,051                                  | 3,530                        | 2,303   | 4.1%   |
| 2007 |        | 64,145               | 6,582  | 54,856                                  | 4,188                        | 2,546   | 4.7%   |
| 2008 |        | 66,432               | 7,935  | 54,854                                  | 5,011                        | 3,093   | 5.6%   |
| 2009 | (prov) | 72,205               | 8,386  | 58,894                                  | 4,599                        | 2,847   | 4.9%   |
| 2010 | (prov) | 74,474               | 7,964  | 61,587                                  | 4,723                        | 3,013   | 4.9%   |
| 2011 | (prov) | 76,660               | 8,248  | 62,492                                  | 4,907                        | 3,086   | 5.1%   |
| 2012 | (prov) | 88,565               | 9,046  | 73,654                                  | 5,173                        | 3,443   | 4.7%   |
| 2013 | (prov) | 35,066               | 7,108  | 29,419                                  | 1,838                        | 1,141   | 3.9%   |
| 2011 | Jan    | (prov) 7,830         | 3,879  | 6,531                                   | 538                          | 350   | 5.4%   |
|      | Feb    | (prov) 7,910         | 4,023  | 6,653                                   | 464                          | 302   | 4.6%   |
|      | Mar    | (prov) 8,615         | 4,162  | 7,486                                   | 510                          | 312   | 4.2%   |
|      | Apr    | (prov) 7,035         | 4,141  | 5,694                                   | 397                          | 241   | 4.3%   |
|      | May    | (prov) 6,142         | 4,197  | 4,898                                   | 467                          | 270 - 285                                     | 5.5% - 5.8%  |
|      | Jun    | (prov) 4,675         | 4,119  | 3,415                                   | 347                          | 201 - 211                                     | 5.9% - 6.2%  |
|      | Jul    | (prov) 4,656         | 4,006  | 3,388                                   | 299                          | 183 - 224                                     | 5.4% - 6.6%  |
|      | Aug    | (prov) 4,231         | 3,861  | 3,209                                   | 292                          | 187 - 247                                     | 5.8% - 7.7%  |
|      | Sep    | (prov) 5,900         | 3,685  | 4,660                                   | 251                          | 163 - 180                                     | 3.5% - 3.9%  |
|      | Oct    | (prov) 6,010         | 3,783  | 5,026                                   | 421                          | 271 - 288                                     | 5.4% - 5.7%  |
|      | Nov    | (prov) 6,564         | 4,010  | 5,571                                   | 489                          | 327 - 352                                     | 5.9% - 6.3%  |
|      | Dec    | (prov) 7,092         | 4,133  | 5,961                                   | 432                          | 279 - 302                                     | 4.7% - 5.1%  |
| 2012 | Jan    | (prov) 8,196         | 4,356  | 6,996                                   | 483                          | 322 - 330                                     | 4.6% - 4.7%  |
|      | Feb    | (prov) 9,063         | 4,491  | 7,703                                   | 462                          | 311 - 322                                     | 4.0% - 4.2%  |
|      | Mar    | (prov) 11,716        | 4,751  | 10,281                                  | 589                          | 394 - 404                                     | 3.8% - 3.9%  |
|      | Apr    | (prov) 7,892         | 4,872  | 6,537                                   | 406                          | 248 - 253                                     | 3.8% - 3.9%  |
|      | May    | (prov) 7,306         | 4,968  | 5,994                                   | 447                          | 257 - 264                                     | 4.3% - 4.4%  |
|      | Jun    | (prov) 5,425         | 4,929  | 4,176                                   | 325                          | 198 - 201                                     | 4.7% - 4.8%  |
|      | Jul    | (prov) 5,061         | 4,911  | 3,860                                   | 315                          | 216 - 218                                     | 5.6% - 5.6%  |
|      | Aug    | (prov) 5,420         | 4,961  | 4,242                                   | 355                          | 243 - 249                                     | 5.7% - 5.9%  |
|      | Sep    | (prov) 5,881         | 5,010  | 4,742                                   | 369                          | 259 - 266                                     | 5.5% - 5.6%  |
|      | Oct    | (prov) 6,816         | 5,196  | 5,748                                   | 452                          | 328 - 333                                     | 5.7% - 5.8%  |
|      | Nov    | (prov) 9,060         | 5,432  | 7,680                                   | 571                          | 394 - 402                                     | 5.1% - 5.2%  |
|      | Dec    | (prov) 6,729         | 5,526  | 5,695                                   | 399                          | 273 - 275                                     | 4.8% - 4.8%  |
| 2013 | Jan    | (prov) 8,747         | 5,776  | 7,337                                   | 506                          | 304 - 316                                     | 4.1% - 4.3%  |
|      | Feb    | (prov) 9,001         | 5,890  | 7,559                                   | 411                          | 276 - 283                                     | 3.7% - 3.7%  |
|      | Mar    | (prov) 9,251         | 6,009  | 7,987                                   | 494                          | 297 - 306                                     | 3.7% - 3.8%  |
|      | Apr    | (prov) 8,067         | 6,080  | 6,536                                   | 427                          | 264 - 271                                     | 4.0% - 4.1%  |

**Notes:-** The data are a snapshot extracted from Sam. Data for 2009 onwards will remain provisional and subject to revision until all culture results are available and final data validation has been carried out. The herd incidence rates for the latest months are given as a range because a number of incidents are still unclassified, so data for these months should be treated as provisional results.

- (1) Herds for which tuberculin skin testing is carried out on at least one animal during the period shown.
- (2) Herds that had lost their OTF status at some time during the period shown due to a TB incident.
- (3) Any test carried out in an OTF herd during the period shown.
- (4) Herds which were previously OTF but either had cattle that reacted to a tuberculin test or had a tuberculous animal disclosed by routine meat inspection at slaughter, during the period shown.
- (5) New herd incidents (column 4) where OTF status was withdrawn from the herd.
- (6) Column 5 as a percentage of column 3.
- \* Data for 2001 are not comparable with other years. During the outbreak of Foot and Mouth Disease, TB testing was significantly reduced and necessarily targeted to areas of higher risk.
- \*\* Data for 2002 are not comparable with other years. Testing resources were concentrated on herds overdue their tests (because of the backlog caused by the Foot and Mouth Disease outbreak).

**TABLE 2: TB INCIDENTS IN GREAT BRITAIN - ANIMALS**

|      |        | Total tests on herds | Total cattle tests | Cattle compulsorily slaughtered as reactors or |          |                 |
|------|--------|----------------------|--------------------|--|----------|-----------------|
|      |        |                      |                    | Total  | Reactors | Direct contacts |
|      |        | (1)                  | (2)                | (3)  | (4)      | (5)             |
| 1996 |        | 36,314               | 2,249,891          | 3,776  | 3,151    | 625             |
| 1997 |        | 34,065               | 2,170,630          | 3,384  | 3,017    | 367             |
| 1998 |        | 37,046               | 2,447,848          | 5,685  | 4,782    | 903             |
| 1999 |        | 41,365               | 2,825,177          | 6,754  | 5,794    | 960             |
| 2000 |        | 40,669               | 2,931,658          | 8,123  | 6,877    | 1,246           |
| 2001 | *      | 13,187               | 1,181,861          | 6,156  | 5,200    | 956             |
| 2002 | **     | 49,709               | 3,961,145          | 22,072   | 19,191   | 2,881           |
| 2003 |        | 56,208               | 4,474,526          | 23,972   | 20,798   | 3,174           |
| 2004 |        | 56,836               | 4,604,721          | 22,214   | 19,636   | 2,578           |
| 2005 |        | 55,887               | 4,811,699          | 29,231   | 25,627   | 3,604           |
| 2006 |        | 64,457               | 5,417,573          | 22,062   | 20,090   | 1,972           |
| 2007 |        | 64,145               | 5,753,244          | 26,882   | 25,330   | 1,552           |
| 2008 |        | 66,432               | 6,178,789          | 39,007   | 36,968   | 2,039           |
| 2009 | (prov) | 72,205               | 6,840,568          | 37,979   | 36,739   | 1,240           |
| 2010 | (prov) | 74,474               | 7,447,653          | 31,949   | 31,277   | 672             |
| 2011 | (prov) | 76,660               | 7,585,499          | 34,243   | 33,458   | 785             |
| 2012 | (prov) | 88,565               | 8,022,880          | 37,754   | 37,068   | 686             |
| 2013 | (prov) | 35,066               | 3,255,325          | 12,006   | 11,691   | 315             |
| 2011 | Jan    | (prov) 7,830         | 789,054            | 2,657  | 2,592    | 65              |
|      | Feb    | (prov) 7,910         | 783,669            | 3,582  | 3,535    | 47              |
|      | Mar    | (prov) 8,615         | 847,824            | 3,154  | 3,116    | 38              |
|      | Apr    | (prov) 7,035         | 752,330            | 2,604  | 2,562    | 42              |
|      | May    | (prov) 6,142         | 559,750            | 2,881  | 2,836    | 45              |
|      | Jun    | (prov) 4,675         | 458,101            | 3,180  | 2,939    | 241             |
|      | Jul    | (prov) 4,656         | 489,866            | 2,454  | 2,417    | 37              |
|      | Aug    | (prov) 4,231         | 402,351            | 2,619  | 2,573    | 46              |
|      | Sep    | (prov) 5,900         | 581,203            | 2,520  | 2,467    | 53              |
|      | Oct    | (prov) 6,010         | 558,376            | 2,130  | 2,051    | 79              |
|      | Nov    | (prov) 6,564         | 679,671            | 3,167  | 3,111    | 56              |
|      | Dec    | (prov) 7,092         | 683,304            | 3,295  | 3,259    | 36              |
| 2012 | Jan    | (prov) 8,196         | 720,110            | 2,580  | 2,537    | 43              |
|      | Feb    | (prov) 9,063         | 782,383            | 3,769  | 3,714    | 55              |
|      | Mar    | (prov) 11,716        | 990,081            | 3,125  | 3,091    | 34              |
|      | Apr    | (prov) 7,892         | 722,070            | 2,805  | 2,774    | 31              |
|      | May    | (prov) 7,306         | 579,842            | 3,466  | 3,413    | 53              |
|      | Jun    | (prov) 5,425         | 489,392            | 2,525  | 2,459    | 66              |
|      | Jul    | (prov) 5,061         | 477,181            | 3,311  | 3,244    | 67              |
|      | Aug    | (prov) 5,420         | 486,819            | 2,988  | 2,863    | 125             |
|      | Sep    | (prov) 5,881         | 547,142            | 2,638  | 2,620    | 18              |
|      | Oct    | (prov) 6,816         | 655,538            | 3,955  | 3,893    | 62              |
|      | Nov    | (prov) 9,060         | 931,362            | 3,754  | 3,682    | 72              |
|      | Dec    | (prov) 6,729         | 640,960            | 2,838  | 2,778    | 60              |
| 2013 | Jan    | (prov) 8,747         | 769,926            | 3,202  | 3,143    | 59              |
|      | Feb    | (prov) 9,001         | 812,155            | 3,104  | 2,997    | 107             |
|      | Mar    | (prov) 9,251         | 850,269            | 2,972  | 2,859    | 113             |
|      | Apr    | (prov) 8,067         | 822,975            | 2,728  | 2,692    | 36              |

**Notes:** The data are a snapshot extracted from Sam. Data for 2009 onwards will remain provisional and subject to revision each month until all culture results are available and final data validation has been carried out.

- (1) Herds in which tuberculin skin testing was carried out in at least one animal during the period shown. (same as column 1 in Table 1).
- (2) Number of animals tested.
- (3) Animals compulsorily slaughtered because they reacted to the tuberculin skin test or because they were considered to be direct contacts (see below). Not all of these animals showed evidence of *Mycobacterium bovis* infection at post-mortem examination.
- (4) An animal which was compulsorily slaughtered because it responded to the tuberculin skin test in a way that was consistent with it being infected with *Mycobacterium bovis*.
- (5) An animal in an OTFW incident that, although not a test reactor, was considered to have been exposed to *Mycobacterium bovis* and compulsorily slaughtered.
- \* Data for 2001 are not comparable with other years. During the outbreak of Foot and Mouth Disease, TB testing was significantly reduced and necessarily targeted to areas of higher risk.
- \*\* Data for 2002 are not comparable with other years. Testing resources were concentrated on herds overdue their tests (because of the backlog caused by the Foot and Mouth Disease outbreak).