

EC Type Examination Certificate Number: **UK/ 0120/ SGS0019**

## **Cewe Instrument AB**

Box 1006  
SE 61129  
Nyköping  
Sweden

Instrument Identification:

**Sprint S3D**

**Poly Phase, Active Import, Multi-rate, Credit, Electricity Meter**

Instrument Traceable Number

**UK/ 0120/ SGS0019**

has been assessed and certified as meeting the requirements of

## **EC Directive 2004/22/EC** **on Measuring Instruments Annex B**

It is certified that the manufacturer's technical design and specimen for the above instrument has been examined and, based on the evidence submitted, it is considered that the instrument conforms to the requirements of MI-003 of EC Directive 2004/22/EC.

This certificate is to be used in conjunction with a certificate covering the product verification as required in Annex D or Annex F.

This certificate is valid for 10 years from 17<sup>th</sup> September 2008 until 16<sup>th</sup> September 2018  
Issue 3

Certification is based on report number(s) EMA120088 CEWE dated 17<sup>th</sup> September 2008

Notified Body Number 0120

Authorised Signature



Notified Body

SGS United Kingdom Ltd, 202B Worle Parkway, Weston-super-Mare, BS22 6WA UK  
t +44 (0)1934 522917 f +44 (0)1934 522137 [www.sgs.com](http://www.sgs.com)

Contact Address

SGS United Kingdom Ltd, Unit 10, South Industrial Estate, Bowburn, Durham, DH6 5AD UK  
t +44 (0)191 377 2000 f +44 (0)191 377 2020 [www.sgs.com](http://www.sgs.com)

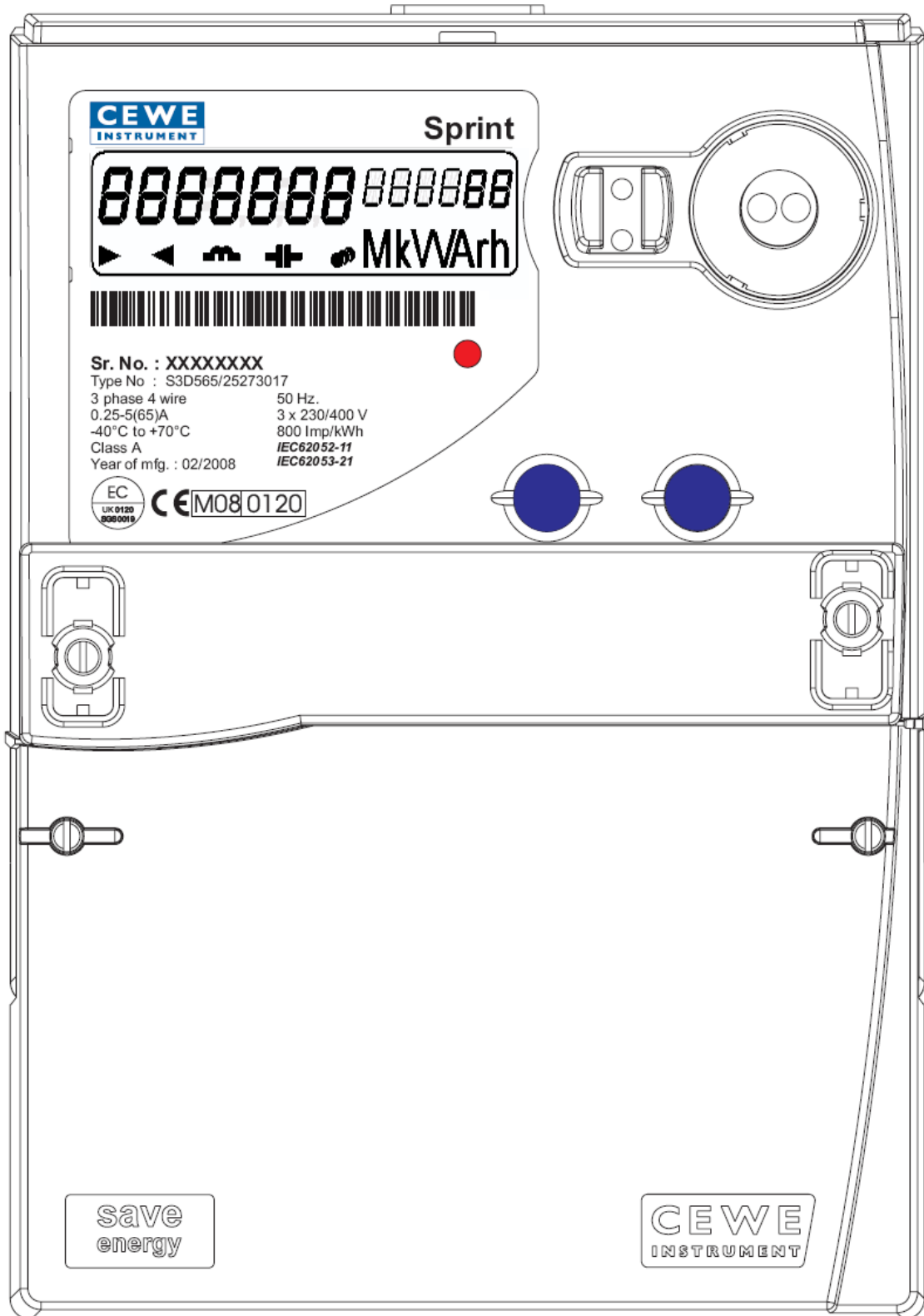
EC Type Examination Cert.

**CE**  
**0120**

## Approval Annex for EC Type Examination Cert. No. UK/ 0120/ SGS0019

<b>Manufacturer</b>	:	Cewe Instrument AB			
<b>Type of Meter(s)</b>	:	Sprint S3D			
<b>Description of Meter</b>	:	Poly Phase, Active Import, Multi-rate, Credit, Electricity Meter			
<b>Accuracy Class</b>	:	A (kWh)	<b>Software Version No</b>	:	E2 06
			<b>Location</b>	:	LCD
<b>Firmware Version No</b>	:	E2 06	<b>Bill Of Materials No</b>	:	BOM –S3D2I4-8AJ
<b>Location</b>	:	LCD			
<b>Meter Location</b>	:	Indoor	<b>Sealing Type</b>	:	Wire & Crimp
			<b>Location</b>	:	2 x Front of meter
<b>Integrity of Meter</b>	:	Inaccessible without breaking seals	<b>Temperature Range</b>	:	-40°C to 70°C
<b>Type of Circuit</b>	:	3p4w	<b>Frequency</b>	:	50Hz
<b>Current Range (A)</b>	:	0,25-5(65)A	<b>Voltage Range (V)</b>	:	3x230/400V

**Artwork View of Front of Meter**



**Photograph of meter Internal View 1**



**Photograph of meter Internal View 2**



Product Variant Identification Details:

Type Designation	Description of meter
S3D	<b>Wiring Type:</b> 230V P-N 3p4w
565	<b>Current Range (Ibasic/Imax):</b> 5/65
2	<b>Class:</b> A
5	<b>IP Link Location:</b> External Screw IP
0	<b>Clock Backup Source:</b> Lithium Battery (default)
1	<b>Clock Backup Source:</b> Supercap
2	<b>Clock Backup Source:</b> Supercap + Lithium Battery
0	<b>Interface Options:</b> 1 out, 1 in (default)
2	<b>Interface Options:</b> No I/O fitted
6	<b>Interface Options:</b> 3 Outputs (on base meter) 100mA
7	<b>Interface Options:</b> 2 Outputs (on base meters) 2A
8	<b>Interface Options:</b> 2 Outputs (on base meter) 100mA
3	<b>Terminal Arrangement:</b> Two screws
0	<b>Frequency:</b> 50 Hz (default)
0	<b>Main Terminal Cover:</b> Standard (default)
1	<b>Main Terminal Cover:</b> Extended
3	<b>Main Terminal Cover:</b> Extended clear cover (NO cut-out)
5	<b>Main Terminal Cover:</b> Extended clear cover (WITH cut-out)
4	<b>Processor &amp; Memory:</b> E34 based – 64K NVM
7	<b>Processor &amp; Memory:</b> E34 based – 96K NVM

Modifications to the meter(s) described according to approval No. **UK/ 0120/ SGS0019** must be notified to the issuing body to confirm the meter(s) continuing compliance to the relevant pattern approval standard(s).