



Ministry of
JUSTICE



Tribunals Service

Quarterly Statistics for the Tribunals Service, 3rd quarter 2010-11

1 October 2010 to 31 December
2010

31 March 2011

© Crown copyright
Produced by the Ministry of Justice

Alternative format versions of this report are available on request from The
Tribunals Service by emailing tsstats@tribunals.gsi.gov.uk.

Alternative format versions of this report are available on request from the Tribunals Service by emailing tsstats@tribunals.gsi.gov.uk.

© Crown copyright
Produced by the Ministry of Justice

Contents

Introduction	2
Key Findings	3
Commentary	5
Explanatory Notes	13
Data quality and sources	15
Definitions	16
Table conventions	19

Tables

Table 1.1 Tribunals Service receipts by quarter and by Jurisdiction
Table 1.1a Employment Tribunals receipts by quarter and Jurisdiction
Table 1.1b Immigration and Asylum receipts by quarter and case type
Table 1.1c Social Security and Child Support receipts by quarter and benefit type
Table 1.2 Tribunals Service disposals by quarter and Jurisdiction
Table 1.2a Employment Tribunals disposals by quarter and Jurisdiction
Table 1.2b Immigration and Asylum disposals by quarter and case type
Table 1.2c Social Security and Child Support disposals by quarter and type of benefit
Table 1.2d Social Security and Child Support outcomes by quarter and type of benefit
Table 1.2e Immigration and Asylum outcomes by quarter and case type
Table 1.3 Tribunals Service Caseload Outstanding by quarter and Jurisdiction
Table 1.4 Tribunals Service Performance Indicators by quarter and Jurisdiction

Introduction

This report presents information on Tribunals Service activity for the third quarter of the 2010-11 year (1 October to 31 December 2010). Information for the same quarter of earlier years is also presented. This quarterly management information is published as Official Statistics.

Annual statistics for the Tribunals Service for 2009-10 and quarterly statistics for the 4th quarter of 2009-10 are available at:
<http://www.tribunals.gov.uk/Tribunals/Publications/publications.htm>.

Quarterly statistics for the first and second quarters of 2010-11, along with statistical notices for Social Security and Child Support (1 April 2010 to 31 January 2011) are available at: <http://www.justice.gov.uk/publications/quart-stats-tribunals.htm> and <http://www.justice.gov.uk/publications/15355.htm>.

Statistics for Employment Tribunals and Employment Appeal Tribunal activity for 2009-10 were published on 3 September 2010 in "Employment Tribunal and EAT statistics 2009-10". This publication is available at:
<http://www.justice.gov.uk/publications/employment-eat-annual-stats.htm>.

Key Findings

In the third quarter of 2010-11 (1 October to 31 December 2010), the Tribunals Service had 188,600 receipts, a decrease of 18% over the same quarter of the previous year – but still higher than for the same period of 2008-09 and 2007-08. Whilst receipts to Employment Tribunals and TS Immigration and Asylum fell, the number of Social Security and Child Support receipts rose by 8%. There were 170,900 disposals in the third quarter of 2010-11. Excluding ET Nottingham and Leicester¹, disposals increased by 7% from 158,800 in the third quarter of 2009-10 to 170,600 in the same period of 2010-11.

Receipts and Disposals

Examining the third quarter, between 2009-10 and 2010-11, there was:

- An increase of 8% in the number of Social Security and Child Support (SSCS) receipts (and a 72% increase when compared with the third quarter of 2008-09).
- A 51% fall in claims to Employment Tribunals (ET) - 11% fall for single claims and 62% fall for multiple claims (there were high numbers of resubmitted airline cases in the third quarter of 2009-10).
- A fall of 17% in overall numbers of receipts to the first tier TS Immigration and Asylum Chamber, but a 15% rise in receipts for Entry Clearance Officer cases.
- A 35% increase in the number of disposals made by Social Security and Child Support (and 80% as compared with the same quarter of 2008-09).
- A 3% fall in the number of receipts associated with Employment Support Allowance/Incapacity Benefit (ESA/IB). At 52,900, the number of receipts is the lowest it has been since the second quarter of 2009-10. Disposals for this case type are at their highest ever levels - 54,300 and are 55% higher than for the corresponding quarter of 2009-10.
- Between 1 October and 31 December 2010, the number of ESA/IB disposals exceeded receipts for the first time.

¹ Disposals figures for Q1 and Q2 2010-11 exclude ET cases in Nottingham and Leicester and for Q3, disposals for ET Nottingham and Leicester are incomplete, therefore comparisons on disposals exclude ET cases in Nottingham and Leicester. Caseload outstanding data for Nottingham and Leicester is partially available. Further details are given in the explanatory notes.

- There was a 23% increase in the number of disposals for Managed Migration.

Caseload Outstanding

- At 31 December 2010, the caseload outstanding was 722,400, with 58% of the current caseload outstanding being multiple ET claims. Although the number of disposals has increased, it has not kept pace with the level of receipts meaning that the caseload outstanding increased by 22% on the amount on 31 December 2009.

Clearances and timeliness

- There were 67,800 SSCS hearing clearances in the third quarter of 2010-11 – a 31% increase on the number in the same quarter of 2009-10.
- 52% of all single cases received by the Tribunals Service were disposed of within target time (KPI 1) in the third quarter of 2010-11. The target was for 75% to be disposed of within target time.

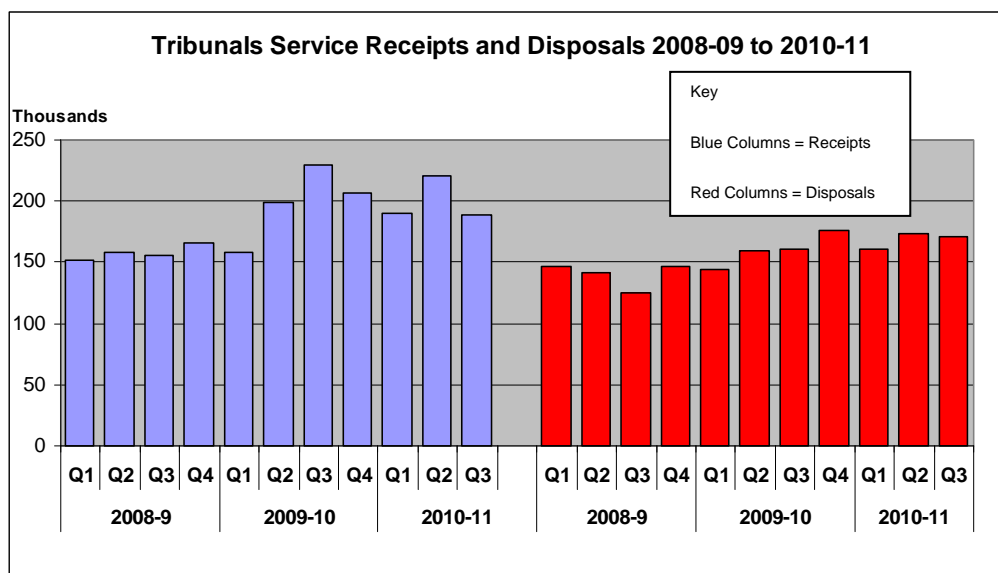
Commentary

Receipts (Table 1.1)

1. In the third quarter of 2010-11 (1 October to 31 December 2010), there were 188,600 receipts in the Tribunals Service, a 41,100 or 18% decrease on the number received in the same quarter of the previous year. There were falls in the number of receipts in Employment Tribunals (mainly multiples) of 41,400 (51%) and in TS Immigration and Asylum of 6,700 (17%), when compared with the third quarter of 2009-10. The number of receipts to Social Security and Child Support (SSCS) increased by 7,900 (8%) between the third quarter of 2009-10 and that of 2010-11.

2. There were 598,900 receipts to the Tribunals Service in the period from April to December 2010. This is a 2% increase on the number for the year to date to December 2009. The rise was predominantly within SSCS who had 311,600 receipts in the year to date to December 2010 – 32% more than in the year to date to December 2009.

Figure 1: Tribunals Service Receipts and Disposals for 2008-09 to 2010-11



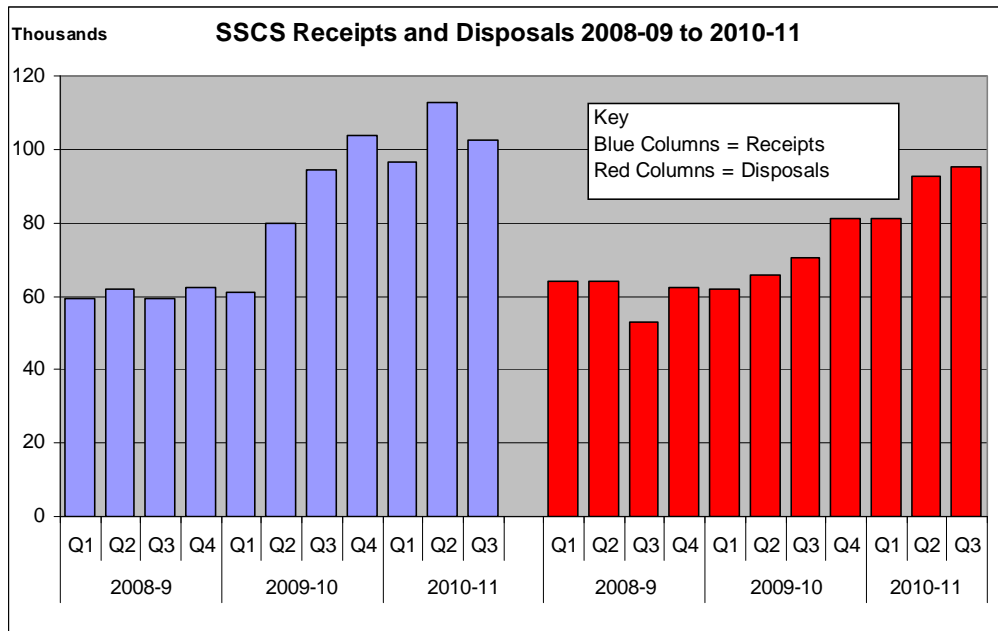
Source: TS reconciled quarterly returns

Receipts by Jurisdiction

3. For Social Security and Child Support, there were 102,500 receipts in the third quarter of 2010-11 – over half of all cases received by the Tribunals Service. Receipts to SSCS have generally been increasing over recent years. When compared with the same quarter in previous years, receipts to SSCS

were still higher – 8% up on 2009-10 and 72% up on 2008-09 numbers. Figure 2 shows the trend in SSCS receipts and disposals over the last few years.

Figure 2: Social Security and Child Support Receipts and Disposals, 2008-09 to 2010-11.



Source: TS reconciled quarterly returns

4. Of the 102,500 cases that were received by SSCS in the third quarter of 2010-11, 52% referred to Employment Support Allowance (ESA)/Incapacity Benefit (IB); 22% for Disability Living Allowance (DLA)/Attendance Allowance (AA); and 13% for Job Seeker’s Allowance (JSA). The number of receipts of ESA/IB cases was 52,900 - 3% lower than for the third quarter of 2009-10 and the lowest it has been since the second quarter of 2009-10. Comparing receipts in the third quarter, those for: JSA have gone up by 69%; DLA/AA have risen by 14% and those for Tax Credits have more than doubled from 2009-10 to 2010-11.

5. In Employment Tribunals (ET), the number of receipts (claims) between 1 October and 31 December 2010 was 39,900 – a fall of 51% compared with the same quarter of 2009-10, but 2% higher than for the third quarter of 2008-09. The majority of the recent drop in receipts was for multiple claims, which went down by 62% between the third quarters of 2009-10 and 2010-11 (although 13% higher than for 2008-09). The total number of ET claims is highly dependent upon multiple receipts which are extremely variable (they also include periodic re-submissions, for example of airline cases, which went down significantly between the third quarters of 2009-10 and 2010-11). The number of single claims fell by 11% - from 17,400 between 1 October and 31 December 2009 to 15,500 for the same period in 2010-11.

6. For ET, when the jurisdictional mix² of claims is considered (Table 1.1a), there were 79,600 jurisdictional complaints in the third quarter of 2010-11 (down by 33% on the same quarter in 2009-10 – a quarter of which contained a large number of resubmitted claims). Of the total number of jurisdictional complaints – 30% were associated with unfair dismissal, breach of contract and redundancy; 19% were for unauthorised deductions (Wages Act); 17% were for Working Time Directive (which includes resubmitted airline cases); and 14% were associated with Equal Pay.

7. Comparing the third quarter of 2009-10 with that of 2010-11, the number of jurisdictional claims received for age discrimination went up significantly (from 1,100 to 2,900) and those for suffer a detriment/unfair dismissal – pregnancy and sex discrimination also rose – by 47% and 27% respectively. There were a number of falls in jurisdictional claims for other jurisdictions, most notably Working Time Directive (down 60%); Equal Pay (down 15%) and redundancy, breach of contract and unfair dismissal (down 15%).

8. In TS Immigration and Asylum, there were 33,000 receipts in the third quarter of 2010-11. This is lower than in the same quarters of the two previous years (a fall of 17% when compared with the third quarter of 2009-10 and 27% when compared with 2008-09). The overall fall in receipts is not reflected in all case types. Receipts for Asylum, Managed Migration and Family Visit Visas all fell when comparing the third quarter of 2009-10 to that of 2010-11 (by 18%, 10% and 37% respectively). However, over the same period, there was an increase of 15% in the number of receipts for the Entry Clearance case type.

Disposals (Table 1.2)

9. Between 1 October and 31 December 2010, the Tribunals Service disposed of 170,900 cases or claims³. Excluding ET Nottingham and Leicester, this is an increase of 7% on the same quarter of 2009-10 and 38% on the same quarter of 2008-09. The rise over the last year was mainly seen in Social Security and Child Support Appeals (up 35%), with some increases in other Tribunals such as Asylum Support (up 42%) and Tax First Tier (up 39%).

10. There were 506,000 cases disposed of by the Tribunals Service in the period from April to December 2010. Excluding ET Nottingham and Leicester, this is a 10% increase on the number for the year to date to December 2009 and 23% larger than in the year to date to December 2008.

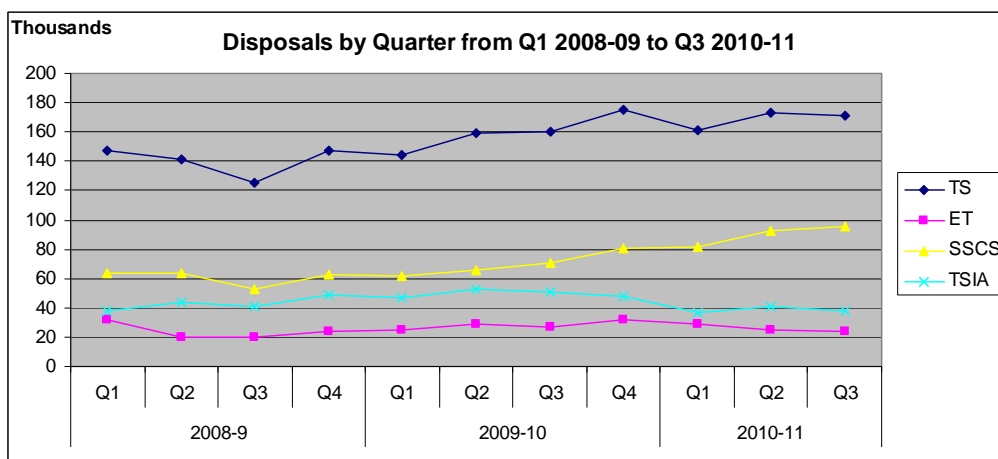
² A claim can contain a number of grounds, known as jurisdictional complaints. When determining any claim, the tribunal has to decide upon the merits of the claim under each jurisdiction. The jurisdictional complaints for 2010-11 exclude ET cases in Nottingham and Leicester. Thus, the total number of complaints is higher. Further details are given in the Explanatory Notes section of this report.

³ Disposals data for Nottingham and Leicester ET offices is incomplete (see Explanatory Notes). Therefore, comparisons of disposals exclude ET Nottingham and Leicester.

11. Despite the rise in disposals, their numbers have not kept pace with the number of receipts. In the third quarter of 2010-11, disposals were 9% less than receipts, meaning that the overall caseload outstanding continues to rise.

Disposals by Jurisdiction

Figure 3: Disposals (by jurisdiction) for 2008-09 to 2010-11



Source: TS reconciled quarterly returns

12. A total of 95,200 cases were disposed of by Social Security and Child Support between 1 October and 31 December 2011 – 35% more than in the same period of 2009-10 and 80% more than for the third quarter of 2008-09. The number of disposals has been increasing consistently since the first quarter of 2009-10.

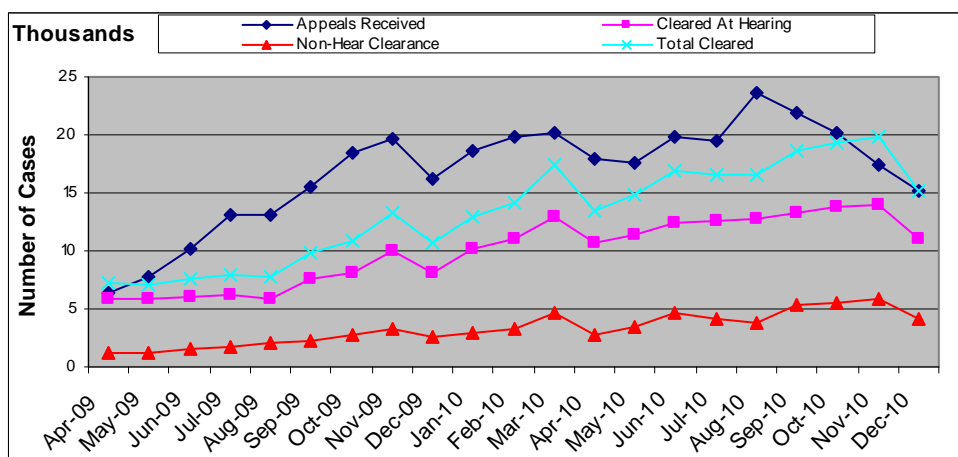
13. Of the 95,200 SSCS cases disposed of: 54,300 (57%) were for Employment Support Allowance (ESA)/Incapacity Benefit (IB); 15,900 (17%) were related to Disability Living Allowance (DLA)/Attendance Allowance (AA) and 11,400 (12%) were for Job Seeker's Allowance.

14. The rise in SSCS receipts over recent years has been in response to the introduction of Employment Support Allowance to replace Incapacity Benefit in October 2008 (and seen in the management information from June 2009 data onwards). Figure 4 shows the change in receipts and disposals of appeals for ESA/IB benefits throughout 2009-10 and up to the third quarter of 2010-11. It also gives details of those disposals that were cleared by having a Tribunal hearing and those that were settled or struck out (non-hearing clearances). There has been a 3% fall in the number of ESA/IB receipts between 2009-10 and 2010-11 (comparing the third quarters), whilst disposals have increased by 55% over the same period – reaching their highest levels in the third quarter of 2010-11. Between 1 October and 31 December 2010, the number of ESA/IB disposals exceeded receipts for the first time.

15. There were increases between the third quarters of 2009-10 and 2010-11 in the number of disposals for other benefit types: Tax Credits (more than

doubling); Job Seekers Allowance (up 66%); Industrial Injuries Disablement Benefit (up 56%).

Figure 4: Receipts and Disposals for Employment Support Allowance and Incapacity Benefit, April 2009 – December 2010



Source: TS reconciled quarterly returns

16. Table 1.2d provides some information on the outcome of Social Security and Child Support cases that were cleared at hearing⁴ and whether the decision was found in favour of the appellant, or if the original decision made by DWP was upheld. There were 67,800 hearing clearances in the third quarter of 2010-11 – a 31% increase on the number in the same quarter of 2009-10. Of these, 33% were found in favour of the appellant. This proportion varied by type of benefit with 39% of Child Support; 38% of ESA/IB; 37% of DLA/AA and 9% of Social Fund hearing clearances being found in favour of the appellant.

17. In the third quarter of 2010-11, Employment Tribunals disposed of 24,300 claims⁵ - excluding ET Nottingham and Leicester, this is 6% less than for the same period of 2009-10. 57% of the ET cases disposed of in the quarter were single cases.

18. Table 1.2a gives details of ET Jurisdictional claims disposed of by type of jurisdiction and outcome. Of the 51,000 jurisdictional claims disposed of in the third quarter of 2010-11:

- 39% were unfair dismissal, breach of contract or redundancy;
- 17% were associated with unauthorised deductions (Wages Act).

⁴ These are cleared via a Tribunal (could be a panel or a member of the Judiciary sitting alone) with a decision/outcome.

⁵ Data for Nottingham and Leicester ET offices is incomplete (see Explanatory Notes).

Of the total jurisdictions disposed of in the third quarter of 2010-11:

- 33% were withdrawn; 30% were Acas Conciliated and 11% were successful at hearing.

19. In TS Immigration and Asylum, overall, there were 37,800 disposals in the third quarter of 2010-11 – 25% lower than in the third quarter of 2009-10 and 8% lower than in the same period of 2008-09. However, disposals exceed receipts by 15% in the third quarter 2010-11 and by 12% for the period April to December 2010. Examined by case type, there was a 23% increase in the number of disposals for Managed Migration. Compared with the third quarter of 2009-10, there were falls in disposals for Asylum (of 17%); Entry Clearance Officer (of 58%) and Family Visit Visas (of 14%). A paper case exercise was carried out in the second and third quarters of 2009-10, where more disposals were made. Thus, overall (and particularly for ECO) disposals for 2010-11 look low by comparison.

20. Table 1.2e gives outcomes for those TSIA cases that were disposed of. Between October and December 2010, of the 37,800 that were disposed of:

- 15,700 (42%) were dismissed;
- 14,800 (39%) were allowed;
- 7,300 (19%) were withdrawn.

Caseload Outstanding (Table 1.3)

21. At 31 December 2010, the caseload outstanding was 722,400, an increase of 22% on the amount at 31 December 2009, and 66% higher (excluding Mental Health) than on 31 December 2008. 58% of the current caseload outstanding is multiple ET claims.

22. Generally, the size of the caseload has been increasing as disposals fail to keep pace with receipts. However, during the last year, the caseload outstanding has fallen for some jurisdictions - TS Immigration and Asylum (by 30%) and for some of the Special Tribunals, including Criminal Injuries Compensation (by 22%).

Performance (Table 1.4)

23. The Tribunals Service has a set of Primary Performance Indicators for each jurisdiction which are largely based upon waiting times from receipt to disposal. Most of these are 75% targets, but the waiting times themselves (expressed in days or weeks) vary. The indicators are consolidated to form KPI 1 which is:

“The percentage of single, first instance applications that are dealt with within target time (75% target)”

24. From April 2010, changes were made to some of the performance indicators to more fully measure the process within individual tribunals. This has meant that a number of individual indicators have changed and there has also been an effect to the calculation of the overall KPI 1 indicator. As a result, some indicators from April 2010 onwards are not directly comparable with those for earlier years.

25. In the third quarter of 2010-11, 52% of applications were dealt with in target time – a similar level to previous quarters of 2010-11. High levels of receipts may have partially affected the ability to meet the performance indicator. In addition, priority has been given to older outstanding cases (unlikely to be within target waiting times) to be dealt with, which will impact on the proportion of applications dealt with in target time.

26. When examined by jurisdiction, achievement against the 75% target, for the third quarter of 2010-11 was:

- 47% in Social Security and Child Support;
- 60% in Employment Tribunals;
- 68% in Employment Appeal Tribunal;
- 60% overall for TS Immigration and Asylum, but with some variation by type of case (e.g. Family Visit Visa was 76%)’
- 99.9% for Section 2 target for Mental Health – this is against a 100% target.

27. Many other tribunals exceeded, met or came close to meeting their targets and performance was as follows⁶:

- 100% in Charities;
- 100% in First Tier Immigration;
- 100% in Gambling Appeals;
- 100% in Reserve Forces Appeals (determinations issued within 4 weeks)
- 100% in Reserve Forces Appeals (of claims served within 5 days)
 - 84% in Transport;
 - 84% in Tax First Tier (paper cases disposed in 20 weeks);
 - 83% in Lands (Category 1);

⁶ Some of the Special Tribunals have low numbers of cases

- 82% in Special Educational Needs and Disability.
- 81% in Care Standards;
- 79% in Primary Health Lists;
- 77% in Tax First Tier (basic cases disposed in 20 weeks);
- 74% in Gender Recognition;
- 73% in Information

Explanatory Notes

ET Information in Nottingham and Leicester

Historically, Employment Tribunals statistics have been extracted from the ETHOS case management system. However, a pilot replacement system was developed (Caseflow). The pilot of the Caseflow system commenced in Nottingham in November 2009, and whilst steps were taken to protect the data through to the end of the 2009-10 reporting year (i.e. to 31 March 2010), the resource required to maintain duplicated entry onto the old ETHOS system was simply not sustainable. TS had every expectation that the new system would be in a position to provide the data very early in the new reporting year. The pilot of Caseflow was extended to Leicester with effect from 24 May 2010. Data for Leicester was available from ETHOS up until that point.

The Caseflow system has now ceased and a reversion is taking place to the former ETHOS system. For a short period, complete data has not been available for Nottingham and Leicester. Whilst there is robust data on receipts of claims, a reliable figure for disposals, jurisdictional claims or the outstanding caseload (partial data available only) in respect of Nottingham and Leicester is not available for the first three quarters of 2010-11. Thus we have removed data for comparator years when making comparisons of disposals with previous years.

Changes to Performance Indicators for 2010-11

The Tribunals Service's primary target on waiting times (KPI 1) is:

The percentage of single, first instance tribunal applications that are dealt with within target time (75% target).

It is a composite indicator made up from individual performance indicators for separate tribunals. Recommendations for performance indicators to measure the more complete process within the tribunals were agreed by the Tribunals Service Executive Team in November 2009 and January 2010.

The Performance Indicators are the same as in 2009-10 except for:

- TSIA – new indicator for Family Visit Visa, measuring the percentage of cases where the time taken from receipt in TSIA to promulgation by Immigration Judge is within 25 weeks (75% target). The former target measured the time from the receipt of the bundle to promulgation (was a 10 week target);
- TSIA – new indicator for Entry Clearance, measuring the percentage of cases where the time taken from receipt in TSIA to promulgation by Immigration Judge is within 30 weeks (75% target). The former target

measured the time from the receipt of the bundle to promulgation (was a 10 week target);

- SSCS – new indicator measuring the percentage of appeals where the final outcome is given to the appellant within 16 weeks of the receipt at SSCS (16 week target). The former target measured the time from receipt to first hearing (a 14 week target);
- MH – 3 indicators of :
 - The percentage of Section 2 cases listed for hearing within 7 days (100% target);
 - The percentage of non-restricted cases disposed of within 9 weeks of receipt (75% target);
 - The percentage of Restricted Patient cases disposed of within 17 weeks (75% target).
- First Tier Tax – existing indicator on cases disposed of within 70 weeks and two new indicators to measure the different types of cases of :
 - The percentage of paper cases disposed of in 20 weeks;
 - The percentage of basic cases disposed of in 20 weeks.
- Lands – two indicators, which better reflect the type of work done by the Tribunal:
 - The percentage of Category 1 cases⁷ to be disposed of within 24 weeks of registration (75% target);
 - The percentage of Category 2 cases⁸ to be disposed of within 70 weeks of registration (70 week target).
- Administrative Appeals Chamber – 2 new indicators have been introduced to better reflect the work of the Chamber:
 - The percentage of appeals disposed of in 20 weeks (75% target);
 - The percentage of applications for Leave to Appeal to be disposed of within 10 weeks of receipt (75% target).

⁷ Absent Owners and Rights of Light jurisdictions.

⁸ Leasehold Reform Appeals, Rating Appeals, Reference Cases, Housing Act Cases, Law of Property (restrictive covenants).

Data quality and sources

Information presented in this report is management information drawn from a number of administrative sources. Although care is taken when processing and analysing the data, the details is subject to inaccuracies inherent in any large-scale recording system and it is the best that is available at the time of publication. The Tribunals Service is examining the quality of management information. Thus, it is possible that some revisions may be issued.

Change of Names of Tribunals

A number of Tribunals have become part of the Tribunals Service since it was formed, or have changed their name. Details of these changes have been published in Annex A of The Tribunals Service Annual Report and Accounts, 2009-10.

Definitions

Receipt – Volumetric term covering the acceptance of a case within the Tribunals Service.

Disposal – A disposal is the closure of a case when work has ceased to be done. This can be through a claim being withdrawn, settled, dismissed or being decided at a hearing.

Hearing clearance (SSCS) – these are cleared via a Tribunal (could be a panel or member of the Judiciary sitting alone) with a decision/outcome.

Non-hearing clearance (SSCS) – these are cases withdrawn prior to a hearing, struck out or superseded. There are some Tribunal judgements (some go the judge who decides that they should be struck out).

Caseload outstanding – The number of cases outstanding at the end of the period and still waiting to be dealt with to completion.

ET Claim – A claim may be brought under more than one jurisdiction or subsequently amended or clarified in the course of proceedings, but will be counted only once.

ET single and multiple claims – Claims to the Employment Tribunal may be classified into two broad categories – singles and multiples. Multiple cases are where two or more people bring cases, involving one or more jurisdiction(s) usually against a single employer but not necessarily so, for instance in TUPE cases, and always arising out of the same or very similar circumstances. As a multiple, the cases are processed together.

ET Jurisdiction – The Employment Tribunal powers to hear a claim are determined by legislation, with statutory provisions defining the ambit of the jurisdiction that can be covered by a claim to an Employment Tribunal.

ET Jurisdictional mix – A claim may contain a number of grounds, known as jurisdictional cases. When determining any claim, the tribunal has to decide upon the merits of the claim made under each jurisdiction e.g. unfair dismissal and sex discrimination. The total number of jurisdictions covered by each case gives a truer measure of workload than the number of claims. The jurisdictions covered by ET are wide ranging, from discrimination and unfair dismissals to issues around salary and working conditions.

TSIA Case types:

Asylum – appeals against a refusal to grant asylum, including asylum claims which raise Human Rights grounds.

Managed Migration – appeals generated by people already in the UK who have been refused permission to extend their stay here (either permanently or temporarily). This appeal type will also cover occasions where an individual has their permission to be in the UK revoked.

Family Visit Visa (FVV) – appeals against decisions not to allow temporary visits to see family in the UK.

Entry Clearance Officer (ECO) – appeals generated by people who are not already in the UK, but have been refused permission to enter or stay in the UK for a fixed period of time, or live here permanently.

Deportation – appeals against deportation orders made against people by the Home Secretary.

Human Rights Appeals – A separate Human Rights Appeal category was introduced in the Tribunal in 2001, following the implementation of the Human Rights Act 1998 to allow the consideration of Human Rights arguments for cases where those grounds were not considered at the original human rights appeal. Since then, a range of in-country case types raising Human Rights grounds have been recorded under this category when they would have been more appropriately recorded against another case type. The Tribunal has made a recent change to its administrative processes to record such cases more suitably, which will explain any drop in numbers in the Human Rights (Other) appeal category.

Hearing – The hearing is a meeting at which the tribunal panel considers evidence (either orally or paper based) and reaches a decision (where the decision may be to adjourn or to agree a final outcome). If the hearing is adjourned and restarted, it counts as one hearing.

Examples of hearings include:

- Paper hearings;
- Oral hearings;
- Case Management Discussions;
- Decision on Eligibility.

Oral Hearing – A hearing where the party (ies) and/or their representative(s) have been requested to attend (this can be by telephone or by video conference).

Paper Hearing – Consideration of the case using documents, and not requiring any physical appearance by the parties.

Decision in favour (SSCS) – Decision in favour of the appellant.

Decision upheld (SSCS) – Decision made by the First Tier Agency and withheld by the Tribunal.

Withdrawal – The applicant/claimant/appellant ceases action either before or at the hearing.

Settlement – Cases settled without the need for a hearing. A third party may have been involved in the process.

Postponement – Where a case is taken out of the list, **prior to** the commencement of the hearing – can be done by the applicant, or any other party.

Adjournment – Where, on the day of the hearing, the Panel decides that, for whatever reason, the appeal/case cannot be finalised and has to put off making a final decision to another date, for example because further evidence is required.

Outcome of hearing – The outcome of the hearing is the final determination of the proceedings or of a particular issue in those proceedings; it may include an award of compensation, a declaration or recommendation and it may also include orders for costs, preparation time or wasted costs either in favour or against an appellant. **Note:** ET records outcomes for each act (or jurisdiction), not for the hearing.

Caseload outstanding – The number of cases outstanding at the end of the period and still waiting to be dealt with to completion.

Table conventions

Rounding

Figures in the tables are rounded independently and thus may not add to figures because of rounding. The following conventions have been used throughout:

- Values less than 100 remain as unit values.
- Values from 100 to 999 are rounded to the nearest 10.
- Values of 1,000 and over are rounded to the nearest hundred.

Notation

The following symbols have been used throughout the tables in this bulletin:

.	= Not applicable
..	= Not available
-	= Small Value
0	= Nil
(r)	= Revised data
(p)	= Provisional data

Contact points for further information

Current and previous editions of this publication are available for download at <http://www.justice.gov.uk/publications/quart-stats-tribunals.htm>

Spreadsheet files of the tables and graphs contained in this document are also available for download from this address.

Press enquiries should be directed to the Ministry of Justice press office:

Email: press.office@justice.gsi.gov.uk

Other enquiries about these statistics should be directed to:

The Tribunals Service

Performance, Analysis and Reporting Team
4th Floor

Taylor House
88 Rosebery Avenue
London EC1R 4QU
Email: tsstats@tribunals.gsi.gov.uk

General enquiries about the statistical work of the Ministry of Justice can be e-mailed to: statistics.enquiries@justice.gsi.gov.uk

General information about the official statistics system of the UK is available from www.statistics.gov.uk

Table 1.1 Tribunals Service Receipts by Jurisdiction

Number

	2007-08 ³	2008-09 ³	2009-10					2010-11 ^P		
	Q3	Q3	Q1	Q2	Q3	Q4	2009-10 Total	Q1 ^P	Q2 ^P	Q3 ^P
Tribunals Service	153,600	155,200	158,600	198,500	229,700	207,200	793,900	189,900	220,400	188,600
TSIA - Immigration Judge ¹	41,100	45,500	41,600	41,600	39,800	36,900	159,800	34,000	36,300	33,000
Employment Appeal ²	490	450	440	510	510	500	2,000	520	540	490
Employment	43,100	39,300	42,100	62,100	81,300	50,600	236,100	44,500	57,100	39,900
Singles	14,700	17,700	17,800	19,400	17,400	16,700	71,300	15,800	15,600	15,500
Multiples	28,400	21,600	24,400	42,700	63,800	33,900	164,800	28,800	41,500	24,400
Social Security and Child Support	57,900	59,400	61,100	79,800	94,600	103,800	339,200	96,500	112,600	102,500
Adjudicator to HM Land Registry	390	440	370	380	360	850	2,000	360	310	250
Asylum Support	690	670	520	570	680	1,300	3,100	1,400	1,100	880
Care Standards	71	50	69	71	63	37	240	46	38	27
Charities	.	.	.	0	.	.	5	.	6	.
Claims Management Services	0	0	5	0	0	.
Consumer Credit Appeals	5	13	.	.	.
Criminal Injuries Compensation	530	250	1,100	910	1,000	760	3,800	880	710	550
Environmental Jurisdiction	0	0	0
Estate Agents Appeals	.	0	0	.	.	.	8	0	0	0
Financial Services and Markets	8	8	.	11	5	6	25	5	17	440
First Tier Immigration	7	.	5	.
Gambling Appeals	.	0	.	0	0	0	.	.	0	0
Gender Recognition Panel	57	56	75	70	77	63	290	83	86	72
Information	30	15	26	33	39	62	160	49	44	42
Lands	310	310	200	210	230	480	1,100	230	220	150
Local Government Standards in England	.	.	15	21	22	14	72	15	15	9
Mental Health	5,100	5,300	6,300	6,400	6,200	6,300	25,200	6,000	6,400	6,000
Pensions Regulator	.	0	0	.	0	0
Primary Health Lists	.	.	56	32	29	18	140	23	24	40
Reserve Forces Appeals	5	.	11	.	0	.
Special Commissioners (Income Tax)	59	54
Special Educational Needs and Disability	760	640	1,100	740	660	860	3,400	980	850	640
Tax first tier	.	.	1,700	3,000	2,600	3,100	10,400	2,300	2,300	1,900
Transport	170	230	220	160	140	130	640	140	130	140
Upper Tribunal (Administrative Appeals Chamber)	1,300	1,100	930	1,100	780	900	3,700	1,100	1,100	1,000
VAT & Duties	890	850
War Pensions and Armed Forces Compensation	670	660	640	790	580	560	2,600	670	550	500

Source: TS Quarterly Reconciled Tables

Figures may not add to totals because of rounding

. Not applicable (data was not collected)

.. Not available

- Small Value

^P Provisional

¹ Figures for 2010/11 relate to FTIAC appeals. Figures for 2009/10 relate to appeals dealt with by Immigration Judges at the AIT or FTIAC.

Figures for 2007/08 and 2008/09 relate to appeals dealt with by Immigration Judges in AIT. Previously published figures were provisional.

² EAT Receipts include appeals rejected, struck out or withdrawn prior to registration.

³ Data for Q3 2007/08 and 2008/09 is the best information available, as quarterly reconciliations were not undertaken for these years. Particular care should be taken when looking at the breakdown of Employment Tribunal single and multiple appeals, as these figures can change after initial registration and were not subject to any subsequent reconciliation.

Table 1.1a Employment Tribunal Receipts by Jurisdiction

	2009-10					2010-11 ^P			Number
	Q1	Q2	Q3	Q4	Total	Q1 ^P	Q2 ^P	Q3 ^P	
Total Claims Accepted¹	42,100	62,100	81,300	50,600	236,100	44,500	57,100	39,900	
Jurisdiction²									
Unfair dismissal ³	16,000	15,100	13,900	12,300	57,400	12,300	11,200	11,600	
Unauthorised deductions (Formerly Wages Act)	11,700	16,800	30,700	16,300	75,500	11,800	21,800	15,100	
Breach of contract	13,700	10,500	9,000	9,300	42,400	9,600	8,400	7,700	
Sex discrimination	4,800	6,000	4,200	3,200	18,200	2,600	8,000	5,300	
Working Time Directive	6,300	32,300	34,000	22,600	95,200	18,500	26,400	13,500	
Redundancy pay	7,100	4,300	3,900	3,800	19,000	4,800	3,800	3,300	
Disability discrimination	1,800	2,100	1,800	1,800	7,500	1,600	1,700	1,900	
Redundancy – failure to inform and consult	2,300	1,800	1,300	2,000	7,500	1,800	2,500	1,300	
Equal pay	8,400	7,500	13,100	8,400	37,400	7,000	10,800	11,100	
Race discrimination	1,300	1,600	1,400	1,400	5,700	1,200	1,200	1,300	
Written statement of terms and conditions	1,100	1,300	1,100	1,300	4,700	1,000	870	1,000	
Written statement of reasons for dismissal	290	330	260	230	1,100	250	260	200	
Written pay statement	310	370	330	350	1,400	300	340	310	
Transfer of an undertaking - failure to inform and consult	430	510	350	480	1,800	410	790	380	
Suffer a detriment / unfair dismissal - pregnancy ^{4,5}	540	570	460	380	1,900 ^r	400	390	680	
Part Time Workers Regulations ⁶	180	130	120	91	530	110	1,200	130	
National minimum wage	83	120	170	130	500	120	120	150	
Discrimination on grounds of Religion or Belief	230	280	240	250	1,000	200	210	240	
Discrimination on grounds of Sexual Orientation	160	200	160	190	710	140	180	170	
Age Discrimination	1,500	1,800	1,100	800	5,200	1,100	1,700	2,900	
Others	2,500	1,400	1,700	2,500	8,100	1,400	1,400	1,300	
Total	80,800	105,100	119,300	87,600	392,800	76,700	103,500	79,600	

Source: ET Management Information Database

Figures may not add to totals because of rounding

. Not applicable (data was not collected)

.. Not available

- Small Value

^r Figures have been revised

^P Provisional

[1] A claim may be brought under more than one jurisdiction or subsequently amended or clarified in the course of proceedings but will be counted only once.

[2] The number of jurisdictional claims for the first and second quarters of 2010-11 exclude Nottingham and Leicester ET data (see Explanatory notes)

Data for Nottingham and Leicester contained within Q3 figures for 2010/11 may be incomplete.

[3] This now includes the jurisdiction for unfair dismissal as a result of a transfer of an undertaking, which was previously shown separately.

[4] This now includes 3 jurisdictions relating to pregnancy that were previously recorded under 'Other'.

[5] 2009-10 claims accepted for this jurisdiction were 2,000 in previous publications. This was a rounding error and has been corrected to 1,900.

[6] The high number of receipts for Part Time Workers Regulations in Q2 2010/11 are due to a large multiple receipt in July 2010.

Table 1.1b TSIA Receipts by Case type

	Number									
	2007-08	2008-09	2009-10				2010-11 p			
	Q3	Q3	Q1	Q2	Q3	Q4	2009-10 Total	Q1 ^P	Q2 ^P	Q3 ^P
TSIA- Immigration Judge	41,100	45,500	41,600	41,600	39,800	36,900	159,800	34,000	36,300	33,000
Asylum	2,600	3,000	3,200	5,000	4,800	4,300	17,300	4,200	3,900	3,900
Managed Migration	5,700	4,800	7,800	8,600	10,500	12,800	39,700	9,700	8,000	9,400
Entry Clearance	19,400	25,700	16,100	6,700	8,100	7,500	38,400	7,300	7,400	9,300
Family Visit Visa	13,200	11,900	14,100	21,100	16,300	12,000	63,400	12,600	16,900	10,200
Deport and others	170	70	290	200	220	240	940	190	210	280

Source: ARIA database

Figures may not add to totals because of rounding

. Not applicable (data was not collected)

.. Not available

- Small Value

^P Provisional

Table 1.1c SSCS Receipts by Benefit Type

Benefit	2009-10					2010-11 ^P		
	Q 1	Q 2	Q 3	Q 4	Total	Q1 ^P	Q2 ^P	Q3 ^P
Attendance Allowance	790	1,000	980	1,100	3,900	860	1,100	1,100
Disability Living Allowance	15,900	16,900	18,800	20,100	71,700	17,300	21,000	21,400
Bereavement Benefit	140	140	150	120	530	120	110	140
Carer's Allowance	260	380	260	210	1,100	310	440	420
Child Benefit Lone Parent	340	490	350	420	1,600	340	640	480
Child Support Allowance	1,100	1,000	940	1,100	4,200	940	930	920
Tax Credits	390	340	300	550	1,600	710	720	670
Credits (Other)	0	0	0	0	0	0	-	-
COEG	-	-	-	0	-	-	-	-
Compensation Recovery Unit	83	73	120	94	370	75	87	100
Housing/Council Tax	3,100	3,200	3,100	3,100	12,500	3,100	3,300	3,000
Disability Working Allowance	-	0	0	-	-	0	0	-
Employment Support Allowance	10,100	29,000	41,100	46,500	126,800	46,000	55,700	44,900
Health in Pregnancy Grant	0	120	270	220	610	120	93	50
Home Responsibilities Protection	-	-	12	10	25	7	6	-
Incapacity Benefit	14,200	12,600	13,100	12,200	52,200	9,400	9,100	8,000
Income Support	3,900	4,100	3,800	4,200	16,000	3,900	4,000	4,000
Industrial Death Benefit	0	0	-	-	-	-	0	0
Industrial Injuries Disablement Benefit	1,700	1,100	1,800	2,700	7,300	2,600	2,200	2,300
Job Seekers Allowance	6,900	7,300	7,600	9,300	31,100	8,800	11,500	12,900
Lookalikes	0	-	-	-	-	-	-	-
Maternity Benefit/Allowances	67	64	54	69	250	57	71	57
Others (Extinct/rare Benefits)	16	19	31	14	80	17	42	23
Penalty Proceedings	0	0	0	0	0	-	0	0
Pensions credit	400	370	460	460	1,700	330	360	390
Retirement Pension	250	160	190	220	810	220	190	270
Severe Disablement Benefit/Allowance	33	32	29	36	130	26	23	42
Social Fund	1,400	1,200	970	1,100	4,700	1,300	1,000	1,200
Vaccine Damage Appeals	0	-	-	-	6	-	-	-
Total	61,100	79,800	94,600	103,800	339,200	96,500	112,600	102,500

Number

Source: SSCS Gaps 2 database

Figures may not add to totals because of rounding

. Not applicable (data was not collected)

.. Not available

- Small Value

^P Provisional

Table 1.2 Tribunals Service Disposals by Jurisdiction

Number

	2007-08 ⁵	2008-09 ⁵	2009-10				2010-11 ⁶			
	Q3	Q3	Q1	Q2	Q3	Q4	2009-10 Total	Q1 ¹	Q2 ¹	Q3 ¹
Tribunals Service ¹	134,900	125,500	144,200	159,500	160,200	175,600	639,600	161,300¹	173,400	170,900
TSIA - Immigration Judge	42,600	41,200	46,300	52,800	50,600	47,800	197,500	37,100	40,800	37,800
Employment Appeal ²	210	150	160	130	140	150	580	470	470	600
Employment ¹	19,600	19,800	24,900	28,400	27,000	32,000	112,400	28,900	25,400	24,300
Singles ³	12,500	12,700	14,100	16,000	17,000	18,000	65,000 ⁷	15,700	14,500	13,700
Multiples	7,100	7,100	10,800	12,400	10,000	14,100	47,300	13,300	10,900	10,500
Social Security and Child Support	63,400	52,900	62,100	65,600	70,500	81,000	279,300	81,200	92,500	95,200
Adjudicator to HM Land Registry	380	370	470	620	450	530	2,100	460	350	410
Asylum Support	640	660	470	620	610	1,100	2,800	1,400	1,200	870
Care Standards	63	65	51	50	61	65	230	37	46	32
Charities	.	0	-	0	-	-	7	-	-	-
Claims Management Services	0	0	0	-	0	-	-	-	0	-
Consumer Credit Appeals	.	-	-	-	-	-	12	-	0	-
Criminal Injuries Compensation	540	840	640	920	800	910	3,300	840	960	810
Environmental Jurisdiction	0	0	0
Estate Agents Appeals	.	0	-	0	0	5	6	-	-	0
Financial Services and Markets	7	-	6	-	9	8	27	13	6	-
First Tier Immigration	-	-	-	-	-	-	8	-	-	-
Gambling Appeals	0	0	0	0	-	0	-	0	0	-
Gender Recognition Panel ⁴	81	79	71	72 ⁷	79 ⁷	51	270 ⁷	61	80 ⁷	85
Information	35	30	31	20	38	38	130	41	61	41
Lands	240	320	170	380	230	250	1,000	310	400	430
Local Government Standards in England	.	.	13	19	19	19	70	14	14	17
Mental Health	3,300	5,300	5,700	6,300	6,400	6,600	25,000	6,200	6,900	6,500
Pensions Regulator	0	-	0	0	0	0	0	-	0	0
Primary Health Lists	.	.	16	23	18	21	78	28	24	28
Reserve Forces Appeals	.	.	0	7	-	-	13	-	-	-
Special Commissioners (Income Tax)	41	53
Special Educational Needs and Disability	810	870	710	710	720	730	2,900	700	760	690
Tax first tier	.	.	810	1,100	1,000	2,600	5,600	1,500	1,600	1,500
Transport	150	260	200	160	180	130	670	150	130	140
Upper Tribunal (Administrative Appeals Chamber)	1,400	1,200	920	960	770	930	3,600	1200 ⁷	1,200	850
VAT and Duties	570	890
War Pensions and Armed Forces Compensation	750	520	550	570	520	560	2,200	580	580	480

Source: TS Quarterly Reconciled Tables

Figures may not add to totals because of rounding

. Not applicable (data was not collected)

.. Not available

- Small Value

⁷ Figures have been revised

⁶ Provisional

¹ The number of disposals for the first and second quarters of 2010-11 exclude Nottingham and Leicester Employment Tribunal data (see Explanatory notes).

Disposals for Nottingham and Leicester contained within Q3 figures for 2010/11 are incomplete.

Any comparisons with previous year's data (in the text of this report) will exclude Nottingham and Leicester data.

² Prior to Q1 2010-11 EAT disposals exclude appeals rejected, struck out or withdrawn prior to registration.

From Q1 2010-11 onwards, disposals include appeals rejected, struck out or withdrawn prior to registration

³ The Employment Tribunals single disposals for 2009/10 were shown as 65,100 in the Q1 publication. This was a rounding error and has been corrected to 65,000.

⁴ Some 2009/10 figures for Gender Recognition Panel have been revised

⁵ Data for Q3 2007/08 and 2008/09 is the best information available, as quarterly reconciliations were not undertaken for these years.

Table 1.2a Employment Tribunal Disposals by Jurisdiction

	JURISDICTIONS DISPOSED			Number
	2008-09	2009-10	2010-11 ^P	
	Q3	Q3	Q3 ^P	
Unfair dismissal	9,300	13,000	10,300	
Unauthorised deductions (Formerly Wages Act)	5,900	9,000	8,600	
Breach of contract	5,900	8,100	6,800	
Redundancy pay	1,800	3,100	2,700	
Sex discrimination	2,600	4,200	3,700	
Race discrimination	950	1,100	1,100	
Disability discrimination	1,300	1,600	1,600	
Religious belief discrimination	170	190	180	
Sexual orientation discrimination	110	160	150	
Age discrimination	570	1,200	690	
Working time	3,700	5,700	5,000	
Equal pay	2,700	3,400	4,900	
National minimum wage	250	130	92	
Others	4,300	5,300	5,100	
All	39,700	56,200	51,000	

Source: ET Management Information Database

	WITHDRAWN						Numbers/Percentage
	2008-09		2009-10		2010-11 ^P		
	Q3		Q3		Q3 ^P		
Unfair dismissal	2,400	26%	3,200	25%	2,300	22%	
Unauthorised deductions (Formerly Wages Act)	1,800	30%	3,200	35%	3,100	36%	
Breach of contract	1,400	24%	1,800	22%	1,400	21%	
Redundancy pay	480	26%	710	23%	580	21%	
Sex discrimination	1,200	46%	2,700	64%	2,200	59%	
Race discrimination	270	28%	340	31%	310	28%	
Disability discrimination	450	34%	570	36%	510	32%	
Religious belief discrimination	48	28%	58	30%	49	27%	
Sexual orientation discrimination	26	25%	57	37%	46	30%	
Age discrimination	170	30%	540	45%	210	31%	
Working time	1,000	28%	1,300	23%	1,000	21%	
Equal pay	2,000	75%	2,700	77%	3,500	72%	
National minimum wage	200	80%	36	28%	21	23%	
Others	1,100	25%	1,300	25%	1,600	32%	
All	12,500	32%	18,500	33%	16,900	33%	

Source: ET Management Information Database

	ACAS CONCILIATED						Numbers/Percentage
	2008-09		2009-10		2010-11 ^P		
	Q3		Q3		Q3 ^P		
Unfair dismissal	4,000	43%	5,800	44%	4,700	46%	
Unauthorised deductions (Formerly Wages Act)	1,800	31%	2,300	26%	2,100	25%	
Breach of contract	2,100	35%	2,700	33%	2,400	36%	
Redundancy pay	340	18%	630	20%	640	24%	
Sex discrimination	890	35%	770	18%	650	18%	
Race discrimination	350	37%	420	38%	390	35%	
Disability discrimination	570	43%	710	45%	710	44%	
Religious belief discrimination	57	33%	76	40%	54	30%	
Sexual orientation discrimination	51	48%	66	42%	55	36%	
Age discrimination	240	43%	430	36%	270	39%	
Working time	1,100	30%	2,000	35%	1,700	34%	
Equal Pay	390	14%	400	12%	180	4%	
National minimum wage	27	11%	50	39%	38	41%	
Others	1,500	34%	1,700	33%	1,400	28%	
All	13,400	34%	18,000	32%	15,400	30%	

Source: ET Management Information Database

	STRUCK OUT (NOT AT A HEARING)						Numbers/Percentage
	2008-09		2009-10		2010-11 ^P		
	Q3		Q3		Q3 ^P		
Unfair dismissal	680	7%	1,100	8%	800	8%	
Unauthorised deductions (Formerly Wages Act)	300	5%	590	7%	890	10%	
Breach of contract	330	6%	530	7%	560	8%	
Redundancy pay	120	6%	170	5%	340	13%	
Sex discrimination	230	9%	450	11%	600	16%	
Race discrimination	66	7%	68	6%	120	11%	
Disability discrimination	87	7%	90	6%	110	7%	
Religious belief discrimination	22	13%	16	8%	26	14%	
Sexual orientation discrimination	12	11%	13	8%	23	15%	
Age discrimination	33	6%	83	7%	76	11%	
Working time	180	5%	280	5%	440	9%	
Equal pay	230	9%	290	8%	1,200	24%	
National minimum wage	-	-	10	8%	7	8%	
Others	220	5%	490	9%	230	5%	
All	2,500	6%	4,100	7%	5,400	11%	

Source: ET Management Information Database

Table 1.2a Employment Tribunal Disposals by Jurisdiction

	Numbers/Percentage					
	SUCCESSFUL AT TRIBUNAL					
	2008-09		2009-10		2010-11 ^P	
	Q3	Q3	Q3	Q3 ^P		
Unfair dismissal	940	10%	1,100	8%	890	9%
Unauthorised deductions (Formerly Wages Act)	1,000	17%	1,200	14%	1,100	13%
Breach of contract	1,100	18%	1,300	16%	1,100	16%
Redundancy pay	530	29%	660	21%	500	18%
Sex discrimination	69	3%	90	2%	69	2%
Race discrimination	32	3%	41	4%	39	4%
Disability discrimination	44	3%	39	2%	56	3%
Religious belief discrimination	8	5%	9	5%	-	-
Sexual orientation discrimination	-	-	-	-	-	-
Age discrimination	19	3%	31	3%	20	3%
Working time	730	20%	890	16%	850	17%
Equal pay	11	0%	17	0%	10	0%
National minimum wage	11	4%	10	8%	12	13%
Others	1,100	25%	100	20%	1,100	21%
All	5,600	14%	6,500	12%	5,700	11%

Source: ET Management Information Database

	Numbers/Percentage					
	DISMISSED AT A PRELIMINARY HEARING					
	2008-09		2009-10		2010-11 ^P	
	Q3	Q3	Q3	Q3 ^P		
Unfair dismissal	220	2%	270	2%	280	3%
Unauthorised deductions (Formerly Wages Act)	150	2%	110	1%	150	2%
Breach of contract	110	2%	130	2%	160	2%
Redundancy pay	30	2%	40	1%	34	1%
Sex discrimination	53	2%	36	1%	40	1%
Race discrimination	63	7%	52	5%	59	5%
Disability discrimination	32	2%	47	3%	61	4%
Religious belief discrimination	14	8%	11	6%	16	9%
Sexual orientation discrimination	5	5%	-	-	5	3%
Age discrimination	29	5%	28	2%	30	4%
Working time	85	2%	74	1%	97	2%
Equal pay	19	1%	34	1%	6	0%
National minimum wage	-	-	-	-	5	5%
Others	80	2%	61	1%	140	3%
All	890	2%	900	2%	1,100	2%

Source: ET Management Information Database

	Numbers/Percentage					
	UNSUCCESSFUL AT HEARING					
	2008-09		2009-10		2010-11 ^P	
	Q3	Q3	Q3	Q3 ^P		
Unfair dismissal	920	10%	1,100	9%	1,100	11%
Unauthorised deductions (Formerly Wages Act)	380	6%	550	6%	500	6%
Breach of contract	460	8%	610	8%	500	7%
Redundancy pay	72	4%	210	7%	160	6%
Sex discrimination	150	6%	150	4%	110	3%
Race discrimination	170	17%	150	13%	170	16%
Disability discrimination	130	10%	120	8%	150	9%
Religious belief discrimination	22	13%	17	9%	28	15%
Sexual orientation discrimination	10	9%	10	6%	14	9%
Age discrimination	69	12%	84	7%	73	11%
Working time	280	7%	270	5%	350	7%
Equal pay	11	0%	35	1%	16	0%
National minimum wage	-	-	9	7%	-	-
Others	320	7%	310	6%	310	6%
All	3,000	8%	3,700	7%	3,500	7%

Source: ET Management Information Database

	Numbers/Percentage					
	DEFAULT JUDGMENT					
	2008-09		2009-10		2010-11 ^P	
	Q3	Q3	Q3	Q3 ^P		
Unfair dismissal	130	1%	410	3%	280	3%
Unauthorised deductions (Formerly Wages Act)	490	8%	1,000	11%	700	8%
Breach of contract	420	7%	1,000	13%	670	10%
Redundancy pay	260	14%	710	23%	470	17%
Sex discrimination	6	0%	35	1%	26	1%
Race discrimination	-	-	21	2%	15	1%
Disability discrimination	-	-	20	1%	18	1%
Religious belief discrimination	-	-	-	-	5	3%
Sexual orientation discrimination	0	0%	6	4%	6	4%
Age discrimination	-	-	7	1%	6	1%
Working time	310	8%	880	15%	540	11%
Equal pay	-	-	5	0%	0	0%
National minimum wage	-	-	8	6%	7	8%
Others	110	3%	340	6%	310	6%
All	1,800	4%	4,500	8%	3,000	6%

Source: ET Management Information Database

^P Provisional

Table 1.2b TSIA Disposals by case type

								Number		
	2007-08	2008-09	2009-10					2010-11 ^P		
	Q3	Q3	Q1	Q2	Q3	Q4	2009-10 ¹ Total	Q1 ^P	Q2 ^P	Q3 ^P
TSIA- Immigration Judge	42,600	41,200	46,300	52,800	50,600	47,800	197,500	37,100	40,800	37,800
Asylum	3,200	3,000	2,800	4,400	4,700	4,900	16,700	4,700	4,500	3,900
Managed Migration	5,400	4,300	8,000	7,800	8,700	10,700	35,200	10,400	13,000	10,800
Entry Clearance	16,000	19,400	21,300	26,700	19,900	11,100	79,000	7,900	8,200	8,300
Family Visit Visa ¹	17,900	14,500	14,000	13,700	17,100	20,900	65,600 ^f	13,900	14,800	14,600
Deport and others	130	72	260	270	200	200	930	230	280	230

Source: ARIA database

Figures may not add to totals because of rounding

. Not applicable (data was not collected)

.. Not available

- Small Value

^f Figures have been revised

^P Provisional

¹ The Family Visit Visa disposals for 2009/10 were shown as 65,700 in the Q1 publication. This was a rounding error and has been corrected to 65,600

Table 1.2c SSCS Disposals by Benefit Type

Rounded Number

Benefit	2009-10					2010-11 ^P		
	Q 1	Q 2	Q 3	Q 4	Total	Q1 ^P	Q2 ^P	Q3 ^P
Attendance Allowance	880	920	910	840	3,500	850	850	850
Disability Living Allowance	17,500	17,000	15,500	15,500	65,400	15,500	16,200	15,100
Bereavement Benefit	120	150	130	120	520	110	100	110
Carer's Allowance	320	340	280	260	1,200	220	340	380
Child Benefit Lone Parent	450	450	380	370	1,700	340	440	480
Child Support Allowance	1,200	1,200	1,000	880	4,300	860	870	860
Tax Credits	320	430	330	350	1,400	510	690	730
Credits (Other)	0	0	0	0	0	0	0	-
COEG	0	0	-	-	-	0	0	0
Compensation Recovery Unit	96	88	89	86	360	72	79	100
Housing/Council Tax benefit	3,300	3,300	3,100	3,200	12,900	2,800	3,000	3,100
Disability Working Allowance	0	-	0	0	-	0	0	-
Employment Support Allowance	2,300	11,200	23,400	33,600	70,500	35,300	42,500	45,900
Health in Pregnancy Grant	0	50	140	230	420	160	130	83
Home Responsibilities Protection	-	-	-	10	16	7	11	-
Incapacity Benefit	19,500	14,400	11,600	11,200	56,800	10,100	9,500	8,400
Income Support	5,300	4,700	4,000	3,800	17,700	3,400	3,800	4,100
Industrial Death Benefit	0	0	0	0	0	-	-	0
Industrial Injuries Disablement Benefit	1,700	1,700	1,300	1,400	6,000	1,900	2,100	2,000
Job Seekers Allowance	6,900	7,600	6,900	7,500	28,800	7,400	9,900	11,400
Lookalikes	0	0	-	-	-	-	-	0
Maternity Benefit/Allowances	65	68	54	54	240	58	68	60
Others (Extinct/rare Benefits)	23	21	14	20	78	17	14	30
Penalty Proceedings	0	0	0	0	0	0	0	-
Pensions Credit	430	420	370	430	1,600	360	380	430
Retirement Pension	260	220	160	200	850	190	190	210
Severe Disablement Benefit/Allowance	41	32	24	22	120	26	27	36
Social Fund	1,400	1,300	990	980	4,700	980	1,200	1,000
Vaccine Damage Appeals	-	0	-	-	-	0	-	-
Total	62,100	65,600	70,500	81,000	279,300	81,200	92,500	95,200

Source: SSCS Gaps 2 database

Figures may not add to totals because of rounding

. Not applicable (data was not collected)

.. Not available

- Small value

Table 1.2d SCS Outcomes by Benefit Type

Benefit	Rounded Number												
	2008-09 Quarter 3			2009-10 Quarter 3					2010-11 Quarter 3 ^P				
	Cleared at Hearing ¹	Decision In Favour ²	Decision Upheld ³	Cleared at Hearing ¹	Decision In Favour ² No.	%	Decision Upheld ³ No.	%	Cleared at Hearing ¹	Decision In Favour ² No.	%	Decision Upheld ³ No.	%
Attendance Allowance	630	190	30%	430	69%	550	120	22%	420	76%
Disability Living Allowance	12,200	5,100	42%	6,900	57%	11,600	4,400	38%	7,000	61%
Bereavement Benefit	89	7	8%	82	92%	72	15	21%	56	78%
Carer's Allowance	200	26	13%	170	86%	250	22	9%	220	91%
Child Benefit Lone Parent	240	27	11%	210	88%	310	18	6%	290	94%
Child Support Allowance	770	350	46%	390	51%	620	240	39%	360	58%
Tax Credits	190	32	17%	150	81%	420	57	14%	360	86%
Credits (Other)	0	0	.	0	.	0	0	.	0	.
COEG	-	0	0%	-	-	0	0	.	0	.
Compensation Recovery Unit	60	29	48%	30	50%	57	24	42%	32	56%
Housing/Council Tax benefit	2,100	570	27%	1,500	72%	2,200	490	23%	1,700	76%
Disability Working Allowance	0	0	.	0	.	-	0	0%	-	-
Employment Support Allowance	17,000	6,300	37%	10,600	62%	31,800	11,500	36%	20,000	63%
Health in Pregnancy Grant	70	-	-	67	96%	58	-	-	56	97%
Home Responsibilities Protection	-	0	0%	-	-	-	0	0%	-	-
Incapacity Benefit	9,500	4,800	51%	4,600	49%	7,000	3,300	48%	3,600	52%
Income Support	2,600	760	29%	1,800	70%	2,700	760	28%	1,900	70%
Industrial Death Benefit	0	0	.	0	.	0	0	.	0	.
Industrial Injuries Disablement Benefit	1,000	380	37%	610	61%	1,500	520	34%	940	62%
Job Seekers Allowance	4,100	720	18%	3,300	82%	7,500	1,000	14%	6,400	86%
Lookalikes	0	0	.	0	.	0	0	.	0	.
Maternity Benefit/Allowances	37	10	27%	27	73%	38	-	-	34	89%
Others (Extinct/rare Benefits)	8	-	-	-	-	25	7	28%	15	60%
Penalty Proceedings	0	0	.	0	.	-	-	-	0	0%
Pensions Credit	210	48	23%	160	75%	270	84	32%	180	68%
Retirement Pension	120	7	6%	110	93%	150	11	7%	140	92%
Severe Disablement Benefit/Allowance	19	12	63%	7	37%	22	10	45%	11	50%
Social Fund	700	64	9%	640	91%	750	68	9%	680	91%
Vaccine Damage Appeals	-	-	-	0	0%	-	0	-	-	-
Total	51,800	19,400	38%	31,900	62%	67,800	22,700	33%	44,400	66%

Source: SCS Gaps 2 database

Figures may not add to totals because of rounding

. Not applicable (data was not collected)

.. Not available

- Small Value

^P Provisional

¹ The total number of cases cleared at hearing includes some withdrawals. Thus, it is not the total of those decisions in favour and those upheld.

² Decision in favour of the appellant

³ Decision made by 1st Tier Agency upheld by the Tribunal

Table 1.2e TSIA Outcomes by case type

	2008-09						2009-10						2010-11					
	Q3						Q3						Q3 ^P					
	Allowed		Dismissed		Withdrawn		Allowed		Dismissed		Withdrawn		Allowed		Dismissed		Withdrawn	
	No.	%	No.	%	No.	%	No.	%	No.	%	No.	%	No.	%	No.	%	No.	%
TSIA- Immigration Judge	15,500	38%	22,900	55%	2,800	7%	18,900	37%	27,200	54%	4,400	9%	14,800	39%	15,700	42%	7,300	19%
Asylum	750	25%	2,000	67%	220	7%	1,400	30%	3,000	65%	250	5%	1,000	27%	2,600	66%	280	7%
Managed Migration	1,700	40%	2,200	51%	390	9%	4,100	47%	3,900	45%	670	8%	5,800	54%	4,000	37%	1,000	9%
Entry Clearance	6,600	34%	11,400	59%	1,400	7%	6,500	33%	11,700	59%	1,700	8%	3,000	36%	3,000	36%	2,300	28%
Family Visit Visa	6,400	44%	7,200	50%	840	6%	6,900	41%	8,400	49%	1,800	10%	4,900	34%	6,100	42%	3,600	25%
Deport and others	26	36%	43	60%	-	-	38	19%	140	71%	22	11%	50	21%	160	70%	21	9%

Source: ARIA database

Figures may not add to totals because of rounding

. Not applicable (data was not collected)

.. Not available

- Small Value

^P Provisional

The above figures are based upon decisions at a hearing and on papers.

Table 1.3 Tribunals Service Caseload Outstanding¹ by Jurisdiction

	2007-08		2008-09		2009-10				2010-11 ^P		
	Q3	Q3	Q1	Q2	Q3	Q4	2009-10 Total	Q1 ^{P,2}	Q2 ^{P,2}	Q3 ^{P,2}	
Tribunals Service²	336,700	433,000	484,200	524,900	592,000	628,800	628,800	657,600	706,200	722,400	
TSIA - Immigration Judge	67,400	81,600	84,400	74,700	64,500	58,000	58,000	52,300	50,300	45,000	
Employment Appeal	
Employment ²	209,300	270,400	306,900	338,300	387,500	404,800	404,800	416,600	442,700	453,600	
Singles	22,500	27,500	33,100	35,800	35,500	33,800	33,800	31,600	30,500	31,400	
Multiples	186,800	242,900	273,800	302,500	352,000	371,000	371,000	385,000	412,100	422,200	
Social Security and Child Support	42,300	64,100	68,500	85,400	112,600	138,800	138,800	158,400	182,600	193,400	
Adjudicator to HM Land Registry	2,700	1,700	1,500	1,300	1,200	1,500	1,500	1,400	1,400	1,300	
Asylum Support	98	46	97	49	120	320	320	270	230	160	
Care Standards	160	110	110	140	140	110	110	120	110	58	
Charities	.	-	-	-	-	0	0	0	-	-	
Claims Management Services	-	0	-	0	-	-	-	-	-	-	
Consumer Credit Appeals	.	6	-	-	5	0	0	6	7	8	
Criminal Injuries Compensation	2,200	1,700	2,600	2,700	2,900	2,800	2,800	2,800	2,500	2,300	
Environmental Jurisdiction	0	0	0	
Estate Agents Appeals	.	-	0	-	7	-	-	-	0	0	
Financial Services and Markets	15	20	17	24	21	19	19	24	35	470	
First Tier Immigration	-	-	-	-	-	-	-	-	-	-	
Gambling Appeals	-	0	-	-	0	0	0	-	-	-	
Gender Recognition Panel ³	59	93	85 ^f	83 ^f	81 ^f	93 ^f	93 ^f	120	120 ^f	110	
Information	84	91	39	64	70	94	94	100	98	95	
Lands	960	1,300	1,400	1,200	1,200	1,500	1,500	1,600	1,400	1,100	
Local Government Standards in England	.	.	16	17	20	14	14	15	16	8	
Mental Health	5,100	5,400	5,100	4,800	4,800	4,700	4,800	4,300	
Pensions Regulator	5	0	-	-	-	-	-	-	5	8	
Primary Health Lists	49	60	57	57	37	37	43	
Reserve Forces Appeals	.	.	-	-	-	-	-	-	0	-	
Special Commissioners (Income Tax)	390	400	
Special Educational Needs and Disability	1,300	1,400	1,300	1,300	1,300	1,300	1,400	1,400	
Tax first tier	.	.	10,100	11,600	12,600	13,500	13,500	15,600	16,300	16,700	
Transport	130	150	170	170	120	120	120	120	120	120	
Upper Tribunal (Administrative Appeals Chamber)	1,900	950	930	1,100	1,100	1,100	1,100	1,200	1,100	1,211	
VAT and Duties	6,600	8,100	
War Pensions and Armed Forces Compensation	1,100	820	940	1,200	1,200	1,200	1,200	1,000	980	1,000	

Source: TS Quarterly Reconciled Tables

Figures may not add to totals because of rounding

. Not applicable (data was not collected)

.. Not available

- Small Value

^f Figures have been revised

^P Provisional

¹ As on the last day of the period

² The Employment Tribunal caseload outstanding for the first and second quarters of 2010-11 only have a partial caseload for Nottingham and Leicester (see Explanatory notes) and Nottingham and Leicester caseload outstanding in Q3 2010-11 may be incomplete.

³ Some 2009/10 figures for Gender Recognition Panel have been revised. Figures for Q2 2010-11 have been revised as 4 applications previously being reported as pending were actually withdrawn.

Table 1.4 Tribunals Service Performance Indicators by Jurisdiction

			Percentage										
PI Description	Period	Target	2007-08 ¹	2008-09 ¹	2009-10					2010-11 ²			
			Q3	Q3	Q1	Q2	Q3	Q4	Annual	Q1 ³	Q2 ³	Q3 ³	
TS OVERALL PI	The percentage of applications dealt with in target time	Pre 04/2010	75%	71	64	61	51	47	41	50	.	.	.
TS OVERALL PI	The percentage of applications dealt with in target time	Post 04/2010	75%	51	50	52
TSIA - Immigration Judge	Receipt/Bundle Receipt in AIT/TSIA to promulgation ¹ by an immigration judge (all cases)	Pre 04/2010	75%	50	48	51	29	28	28	34	.	.	.
TSIA - Immigration Judge	Receipt in AIT/TSIA to promulgation ¹ by an immigration judge (all cases)	Post 04/2010	75%	55	52	60
Asylum	Asylum cases, percentage promulgated in 6 weeks	No Change	75%	58	67	69	71	61	58	64	58	59	57
Managed Migration	Managed migration cases, percentage promulgated within 8 weeks	No Change	75%	65	69	65	59	48	31	49	25	24	34
Entry Clearance	Entry clearance cases, percentage promulgated within 10 weeks from receipt of the respondent's bundle	Pre 04/2010	75%	42	42	42	12	17	26	23	.	.	.
Family Visit Visa	Family visitor cases, percentage promulgated within 10 weeks from receipt of the respondent's bundle	Pre 04/2010	75%	50	43	51	28	18	20	27	.	.	.
Entry Clearance	Entry clearance, percentage within 30 weeks from receipt to promulgation	Post 04/2010	75%	70	68	70
Family Visit Visa	Family visitor, percentage within 25 weeks from receipt to promulgation	Post 04/2010	75%	68	65	76
Employment Appeal	The Percentage of appeals where the first substantive hearing takes place within 26 weeks of registration.	No Change	75%	84	91	87	91	83	87	87	79	78	68
Employment	The percentage of single accepted cases where hearing begins within 26 weeks of receipt	No Change	75%	73	74	71	70	65	56	65	58	59	60
Social Security and Child Support	The percentage of appeals where the first hearing takes place within 14 weeks of the receipt at SCS	Pre 04/2010	75%	88	77	66	67	60	46	59	.	.	.
	The percentage of appeals where the final outcome is promulgated within 16 weeks of the receipt at SCS	Post 04/2010	75%	48	46	47
Adjudicator to HM Lands Registry	The percentage of cases disposed ² of within 70 weeks of receipt	No Change	75%	69	65	74	72	74	75	74	74	68	64
Asylum Support	The percentage of cases to be determined ³ within 12 working days of receipt	No Change	100%	100	100	100	100	100	44	78	17 ⁴	14 ⁴	38
Care Standards	The percentage of cases to be determined within 40 weeks of receipt	No Change	75%	81	86	86	86	87	80	85	89	74	81
Charities	The percentage of cases disposed of within 30 weeks of receipt	No Change	75%	.	~	100	~	67	100	86	100	100	100
Claims Management Services	The percentage of cases to be disposed of within 50 weeks of receipt	No Change	75%	~	~	~	100	~	100	100	100	~	0
Consumer Credit Appeals	The percentage of cases to be disposed of within 25 weeks of receipt	No Change	75%	.	100	50	33	100	75	58	33	~	0
Criminal Injuries Compensation	The percentage of cases disposed of within 6 months of being ready to list	Pre 04/2010	75%	77	75	88	92	89	94	91	.	.	.
	The percentage of cases disposed of within 6 months of receipt	Post 04/2010	75%	69	63	67
Environmental Jurisdiction	The percentage of cases disposed of within 30 weeks		75%	~	~	~
Estate Agents Appeals	The percentage of cases disposed of within 27 weeks of receipt	No Change	75%	.	~	~	~	~	100	83	0	0	~
Financial Services and Markets	The percentage of cases disposed of within 50 weeks of receipt	No Change	75%	100	100	33	75	44	63	52	54	83	50
First Tier Immigration	The percentage of cases disposed of within 30 weeks of receipt	No Change	75%	100	50	100	100	100	100	100	100	100	100
Gambling Appeals	The percentage of cases disposed of within 30 weeks of receipt	No Change	75%	~	~	~	~	100	~	100	~	~	100
Gender Recognition	The percentage of cases disposed of within 20 weeks of receipt	No Change	75%	90	63	82	81	84	75	81	77	75	74

Table 1.4 Tribunals Service Performance Indicators by Jurisdiction (continued)

		Percentage											
PI Description	Period	Target	2007-08 ¹	2008-09 ⁴	2009-10					2010-11			
			Q3	Q3	Q1	Q2	Q3	Q4	Annual	Q1	Q2	Q3	
Information	The percentage of cases disposed of within 30 weeks of receipt	No Change	75%	46	60	68	65	68	66	67	85	67	73
Lands	The percentage of cases disposed of within 50 weeks of registration	Pre 04/2010	75%	59	62	75	73	68	68	71	.	.	.
Cat 1	The percentage of cases disposed of in 24 weeks of registration	Post 04/2010	75%	97	94	83
Cat 2	The percentage of cases disposed of in 70 weeks of registration	Post 04/2010	75%	77	49	32
Local Government Standards in England	The percentage of Appeals Tribunals to be held and determined within 16 weeks of receipt of appeal	No Change	95%	.	.	100	95	68	89	87	89	90	60
Mental Health	Section 2 (Mental Health Act 1983) cases that are listed for hearing within 7 days of receipt (statutory target)	No Change	100%	..	91	95	96	98	98	97	97	99.5	99.9
	The percentage of non-restricted cases disposed of within 9 weeks of receipt	Post 04/2010	75%	53	50	47
	The percentage of Restricted Patient cases disposed of within 17 weeks of receipt	Post 04/2010	75%	63	66	60
Pensions Regulator	The percentage of cases disposed of within 50 weeks of receipt	No Change	75%	~	100	~	~	~	~	~	100	~	~
Primary Health Lists	The percentage of cases where the decision was issued within 16 weeks of receipt of reference	No Change	95%	79	67	79
Reserve Forces Appeals	The percentage of determinations (from hearing to judgement) issued within 4 weeks	No Change	85%	.	.	~	71	100	100	67	100	~	100
	The percentage of claims served (accepted) within 5 days	Post 04/2010	100%	100	100	100
Special Commissioners (Income Tax)	The percentage of cases disposed of within 50 weeks of receipt		75%	63	68
Special Educational Needs and Disability	The percentage of cases disposed of within 22 weeks of receipt	No Change	75%	84	64	74	88	85	82	82	83	88	82
Tax first tier	The percentage of standard/complex cases disposed of within 70 weeks of receipt	No Change	75%	.	.	40	52	55	33	42	56	61	60
	The percentage of paper cases disposed of in 20 weeks	Post 04/2010	75%	67	66	84
	The percentage of basic cases disposed of in 20 weeks	Post 04/2010	75%	62	69	77
Transport	The percentage of cases disposed of within 16 weeks of receipt	No Change	75%	86	90	98	97	74	87	89	90	87	84
Upper Tribunal (Administrative Appeals Chamber)	The percentage of all work disposed of within 30 weeks of receipt	Pre 04/2010	75%	88	87	91	93	91	91	92	.	.	.
	The percentage of all work disposed of within 20 weeks of receipt	Post 04/2010	75%	49	55	60
	The percentage of applications for Leave to Appeal to be disposed within 10 weeks of receipt	Post 04/2010	75%	62	56	62
VAT and Duties	The percentage of Category 1 and 3 cases disposed of within 90 weeks of receipt		75%	69	53
	The percentage of Category 2 cases disposed of within 35 weeks of receipt		75%	85	86
War Pensions and Armed Forces Compensation	The percentage of cases disposed of within 20 weeks of receipt	No Change	75%	74	75	77	72	70	68	72	56	58	50

Source: TS Quarterly Reconciled Tables

. Not applicable (data was not collected)
 .. Not available
 ~ no cases dealt with so KPI could not be calculated
 † Revised
 ‡ Provisional

¹ Promulgation is the formal publication of the decision

² A case is considered to be disposed of when a decision has been made on the case and all work on the case has been completed

³ A case is considered to be determined when a decision has been made on the case

⁴ Data for Q3 2007/08 and 2008/09 is the best information available, as quarterly reconciliations were not undertaken for these years.