

EC Type Examination Certificate Number: **UK/ 0120/ SGS0008**

GE Energy

130 Main Street
Somersworth
NH 03878
USA

Instrument Identification:
Intellix SM300 – 88*X****

Poly Phase, Credit, Active Import/Export, Electricity Meter

Instrument Traceable Number
UK/ 0120/ SGS0008

has been assessed and certified as meeting the requirements of

EC Directive 2004/22/EC on Measuring Instruments Annex B

It is certified that the manufacturer's technical design and specimen for the above instrument has been examined and, based on the evidence submitted, it is considered that the instrument conforms to the requirements of MI-003 of EC Directive 2004/22/EC.

This certificate is issued in conjunction with a certificate covering the product verification as required in Annex D or Annex F.

This certificate is valid for 10 years from 13th May 2009 until 12th May 2019
Issue 1

Certification is based on report number(s)
EMA110079 WC dated 13th May 2009
EMA110079 CT dated 13th May 2009
EMA110079 VT dated 13th May 2009
Notified Body Number 0120

Authorised Signature
Mr J Weaver



CE
0120

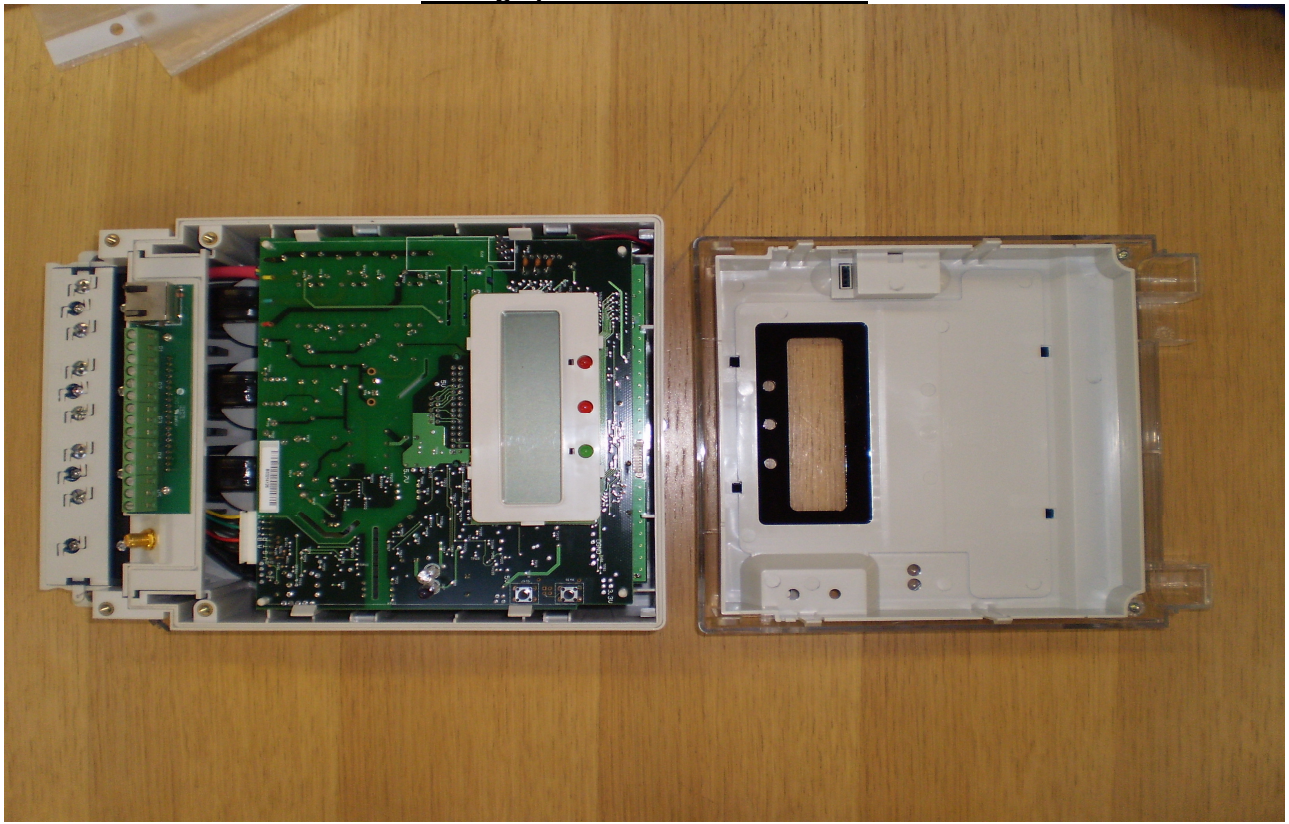
Notified Body
SGS United Kingdom Ltd, 202B Worle Parkway, Weston-super-Mare, BS22 6WA UK
t +44 (0)1934 522917 f +44 (0)1934 522137 www.sgs.com
Contact Address
SGS United Kingdom Ltd, Unit 10, South Industrial Estate, Bowburn, Durham, DH6 5AD UK
t +44 (0)191 377 2000 f +44 (0)191 377 2020 www.sgs.com

EC Type Examination Cert.

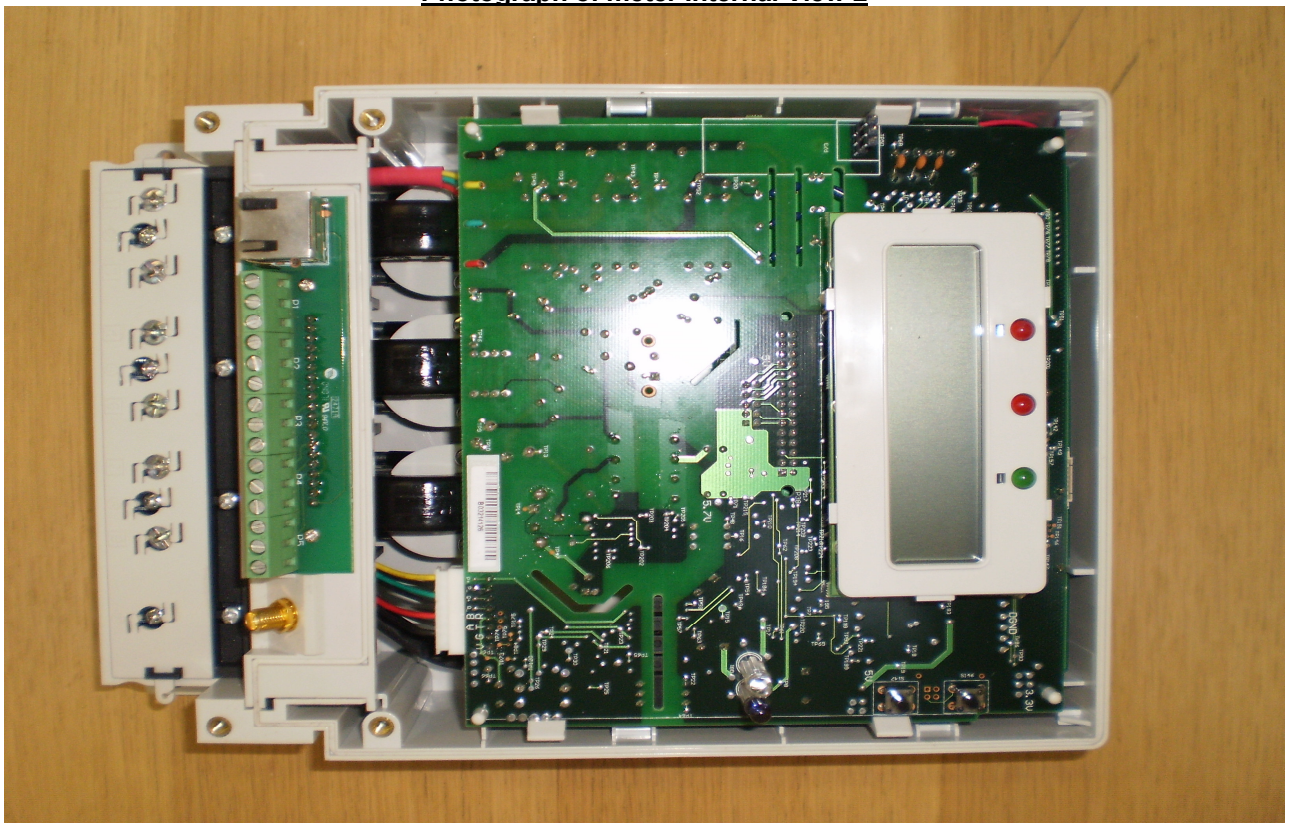
Approval Annex for EC Type Examination Cert. No. UK/ 0120/ SGS0008

Manufacturer : GE Energy	
Type of Meter(s) : Intellix SM300 – 88*X****	
Description of Meter : Poly Phase, Credit, Active Import/ Export, Multi-rate, Electricity Meter	
Accuracy Class (es) : <u>Whole Current Meter</u> A or B (kWh) <u>CT & VT Meter</u> C (kWh)	Software Version No : 1.0 Location : Nameplate
Firmware Version No : 1.0 Location : Nameplate	Bill Of Materials No : 3P BOM
Meter Location : Indoor	Sealing Type : Wire & Crimp
Integrity of Meter : Inaccessible without breaking seals	Temperature Range : -40°C to 70°C
Type of Circuit : <u>Whole Current Meter</u> 3p4w <u>CT Meter</u> 3p4w <u>VT Meter</u> 3p3w	Frequency : 50Hz
Current Range (A) : <u>Whole Current Meter</u> 1-20(40)A 1-20(60)A 1-20(80)A 1-20(100)A <u>CT Meter</u> 0,015-1.5(6)A 0,05-5(6)A <u>VT Meter</u> 0,015-1.5(6)A 0,05-5(6)A	Voltage Range (V) : <u>Whole Current Meter</u> 3 x 230/ 400V <u>CT Meter</u> 3 x 230/ 400V <u>VT Meter</u> 3 x 110V

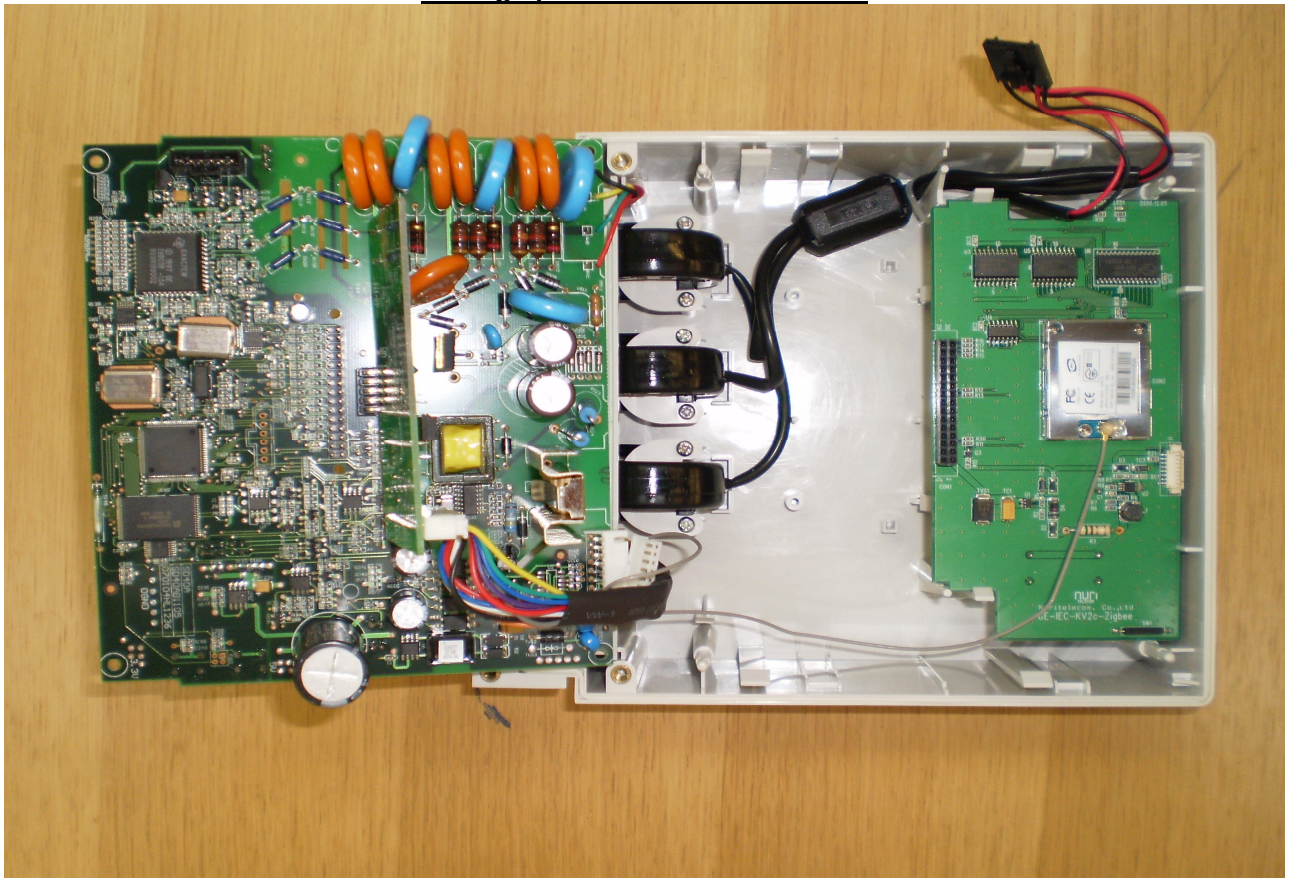
Photograph of meter Internal View 1



Photograph of meter Internal View 2



Photograph of meter Internal View 3



Product Variant Identification Details:

Type Designation	Description of meter
Meter Type	
887X	Intellix SM300 – Whole Current Version
888X	Intellix SM300 – CT or VT Meter Operated Meter
Base/ Terminal Cover/ Battery or Super cap	
5	BS Configuration, Steel Caged Clamp Terminals (Single Screw), Long Terminal Cover, Battery
6	BS Configuration, Steel Caged Clamp Terminals (Single Screw), Long Terminal Cover, Supercap
7	BS Configuration, Steel Caged Clamp Terminals (Single Screw), Short Terminal Cover, Battery
8	BS Configuration, Steel Caged Clamp Terminals (Single Screw), Short Terminal Cover, Supercap
Maximum Current	
2	6Amps <i>Note:- CT & VT Meters Only</i>
5	40Amps <i>Note:- Whole Current Meters Only</i>
6	60Amps <i>Note:- Whole Current Meters Only</i>
7	80Amps <i>Note:- Whole Current Meters Only</i>
8	100Amps <i>Note:- Whole Current Meters Only</i>
Communications	
0	None
1	RS232
2	RS485
3	Nuri Module 1
Options Board	
0	None
1	Basic I/O
2	Multi I/O

Modifications to the meter(s) described according to approval No. **UK/ 0120/ SGS0008** must be notified to the issuing body to confirm the meter(s) continuing compliance to the relevant pattern approval standard(s).